

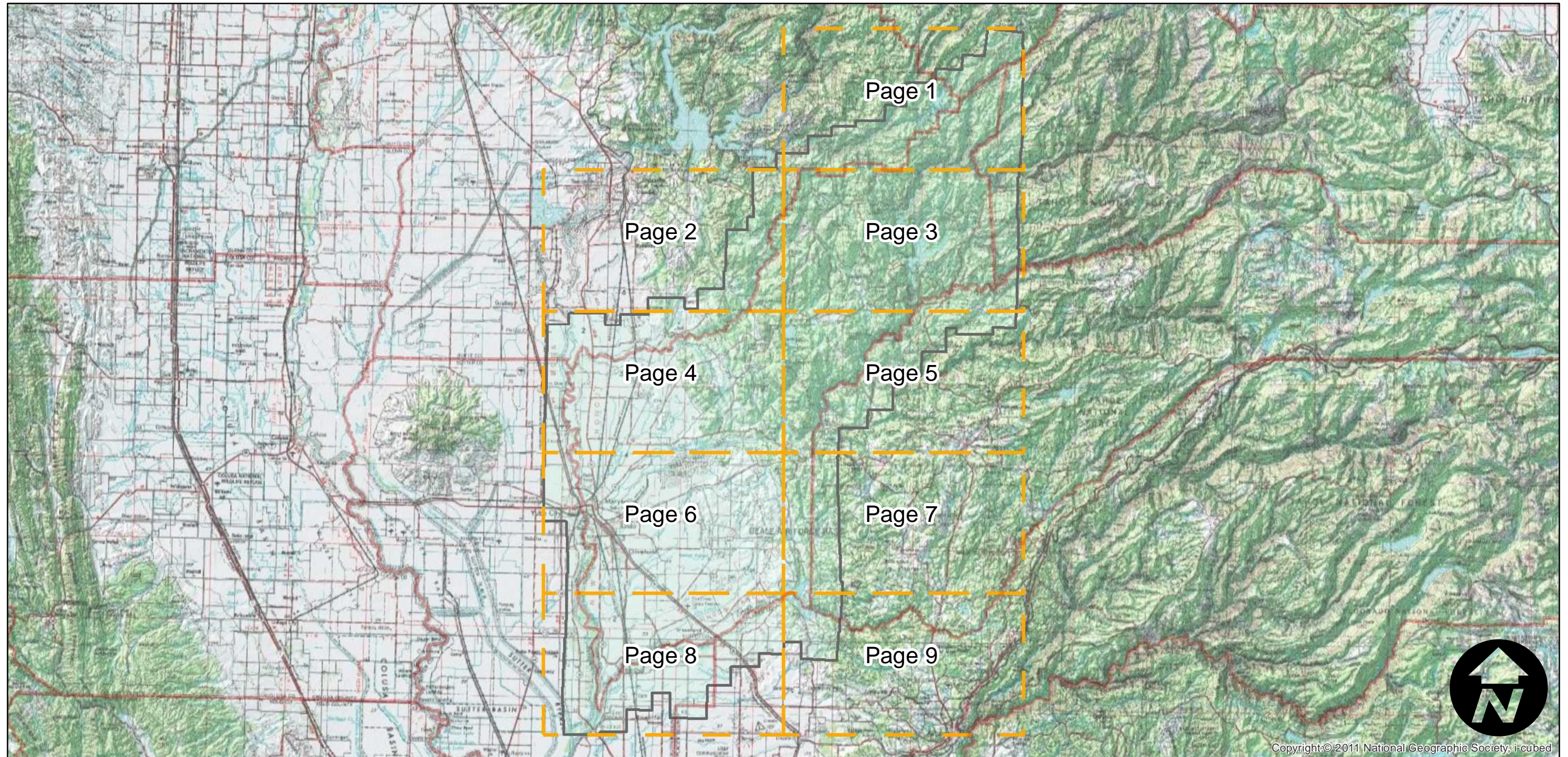
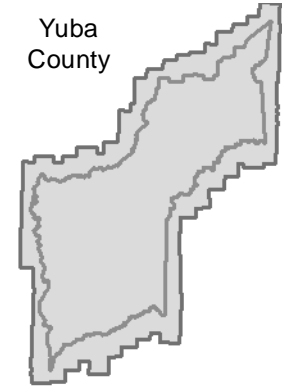
CAS-YUB

Counties: Yuba
Flight date(s): 01-01-1962 to 12-31-1962
Scale: 1: 20,000
Overlap: 60%

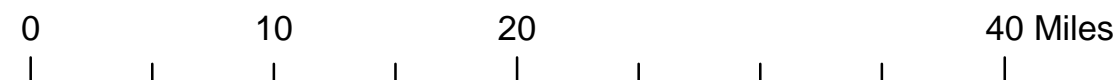
Complete Metadata:
<http://www.library.ucsb.edu/mil/aerial-photography-tools>

FLIGHT LOCATION

Yuba
County



Copyright:© 2011 National Geographic Society, i-cubed



Index to Aerial Photography
Page Key

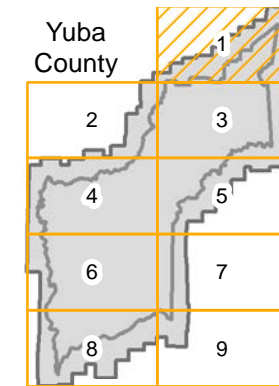
Scale of this index: 1:500,000

CAS-YUB

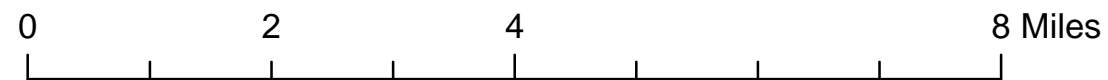
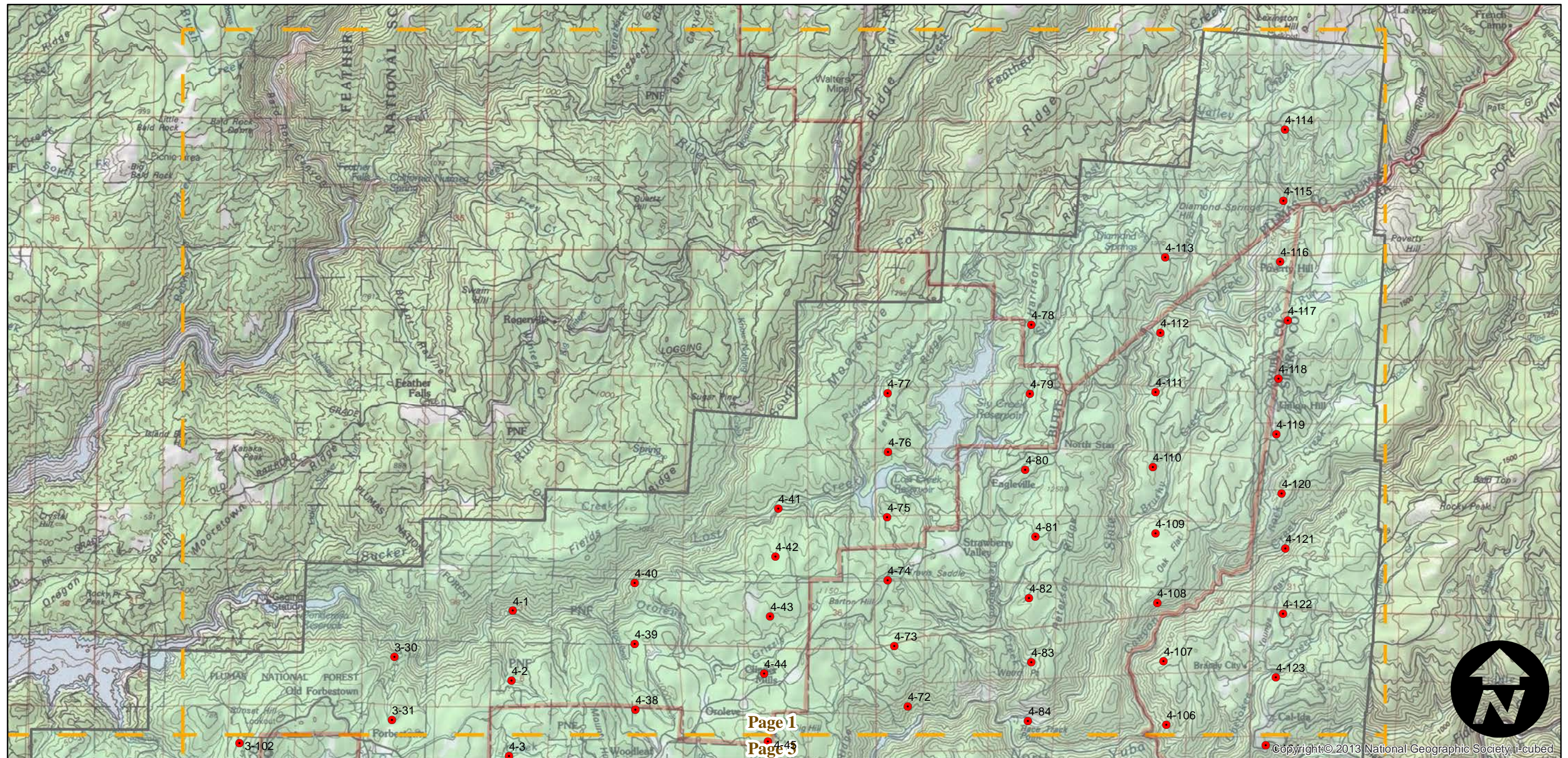
Counties: Yuba
 Flight date(s): 01-01-1962 to 12-31-1962
 Scale: 1: 20,000
 Overlap: 60%

Complete Metadata:
<http://www.library.ucsb.edu/mil/aerial-photography-tools>

FLIGHT LOCATION



- MIL owns frame
- MIL does not own frame



Index to Aerial Photography
 Page 1 of 9

Scale of this index: 1:100,000



Copyright © 2013 National Geographic Society, i-cubed

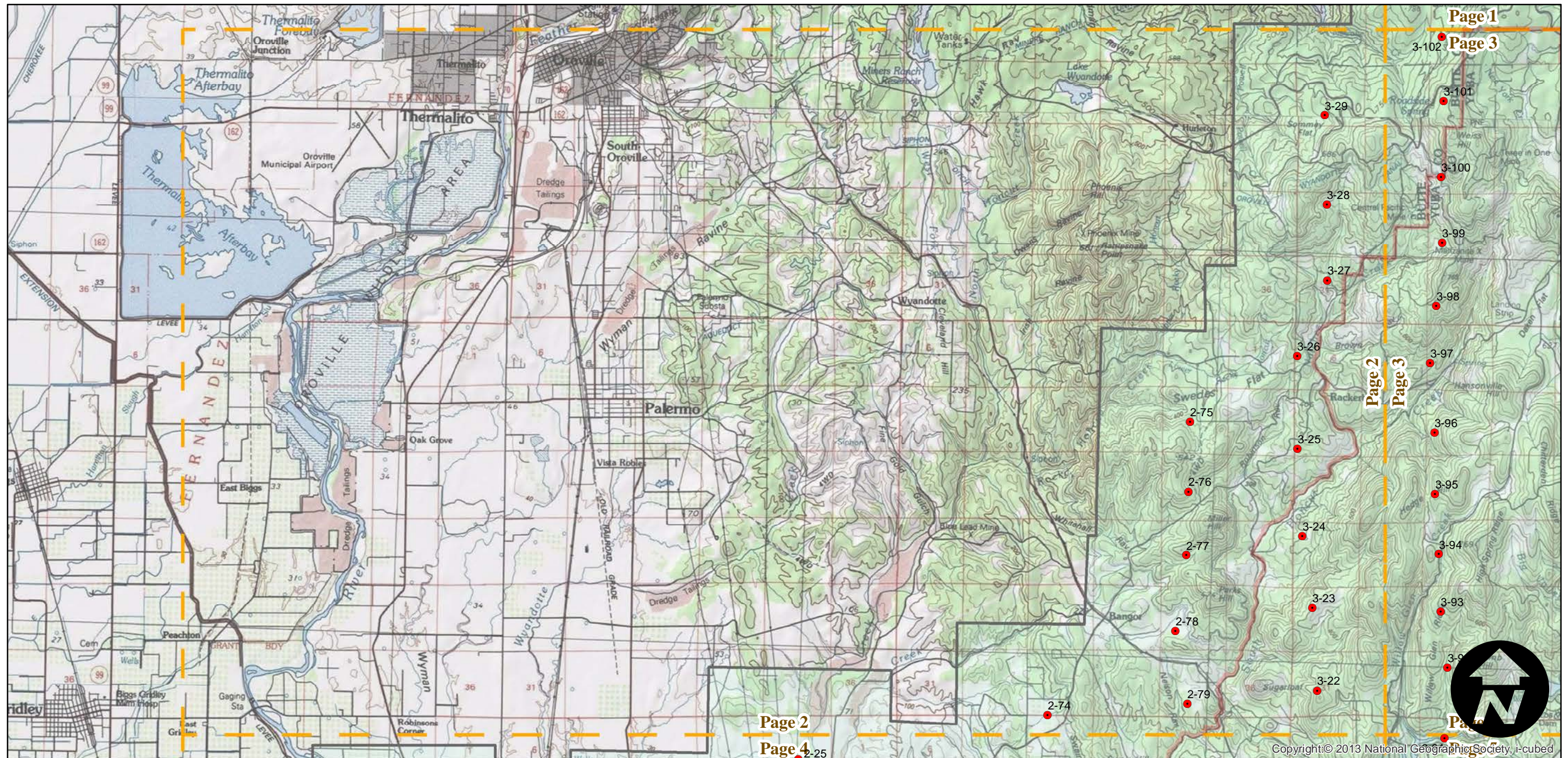
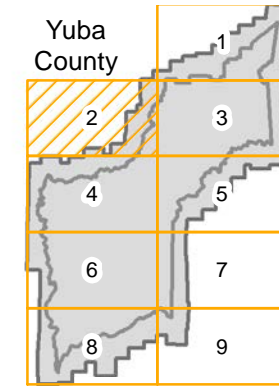
CAS-YUB

Counties: Yuba
 Flight date(s): 01-01-1962 to 12-31-1962
 Scale: 1: 20,000
 Overlap: 60%

Complete Metadata:
<http://www.library.ucsb.edu/mil/aerial-photography-tools>

- MIL owns frame
- MIL does not own frame

FLIGHT LOCATION

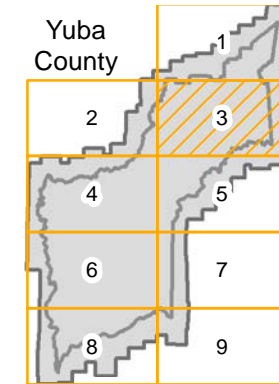


CAS-YUB

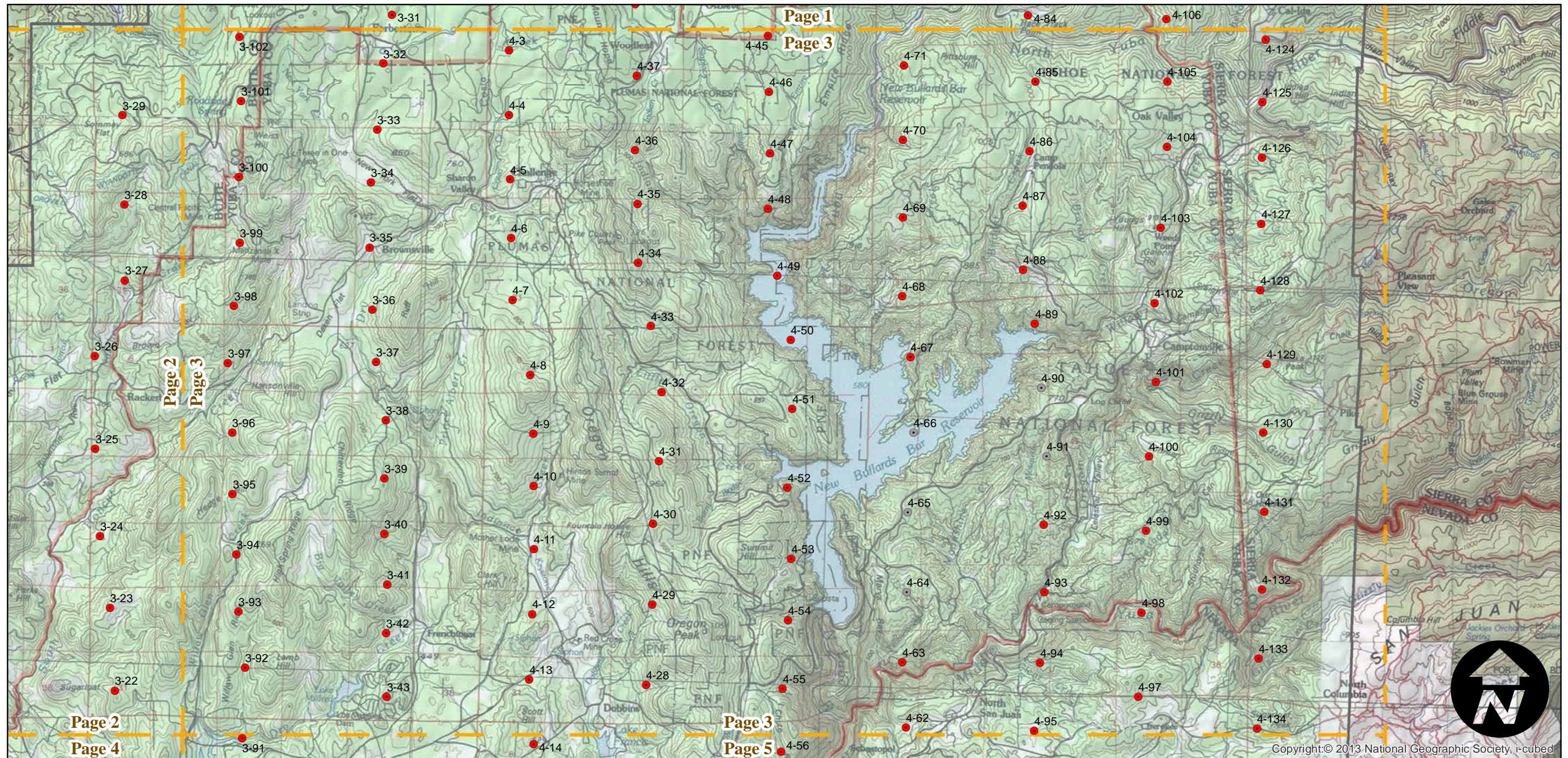
Counties: Yuba
 Flight date(s): 01-01-1962 to 12-31-1962
 Scale: 1:20,000
 Overlap: 60%

Complete Metadata:
<http://www.library.ucsb.edu/mil/aerial-photography-tools>

FLIGHT LOCATION



- MIL owns frame
- MIL does not own frame

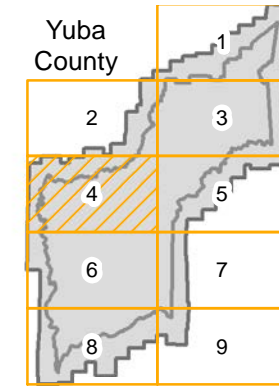


CAS-YUB

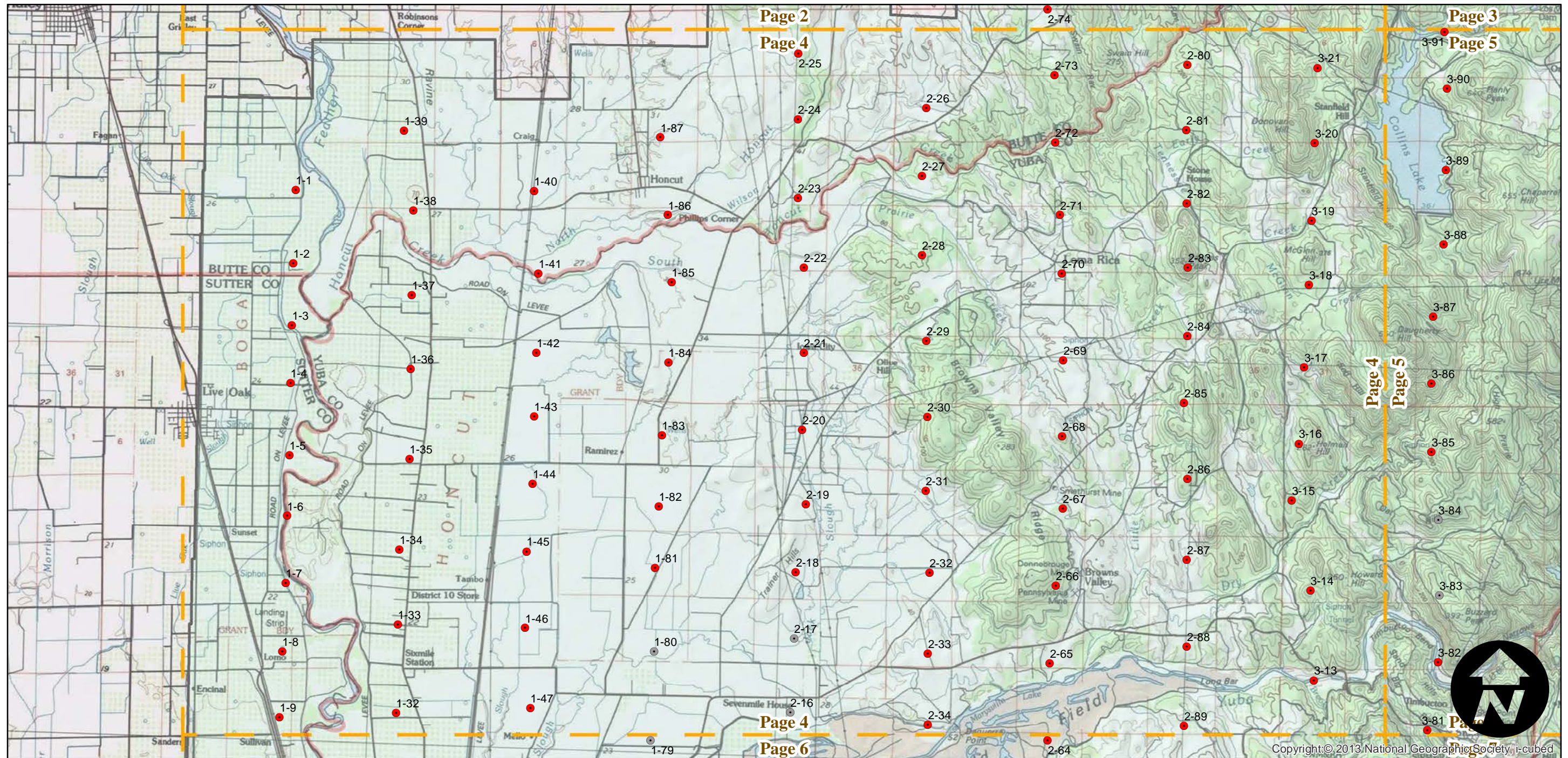
Counties: Yuba
 Flight date(s): 01-01-1962 to 12-31-1962
 Scale: 1: 20,000
 Overlap: 60%

Complete Metadata:
<http://www.library.ucsb.edu/mil/aerial-photography-tools>

FLIGHT LOCATION



- MIL owns frame
- MIL does not own frame

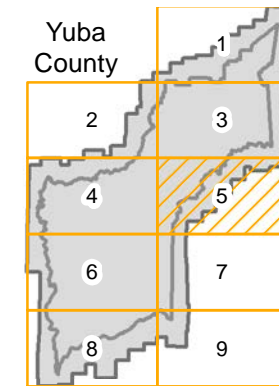


CAS-YUB

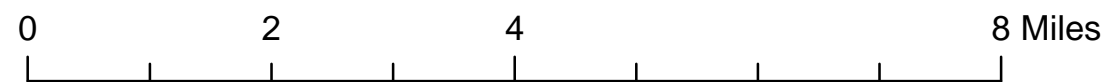
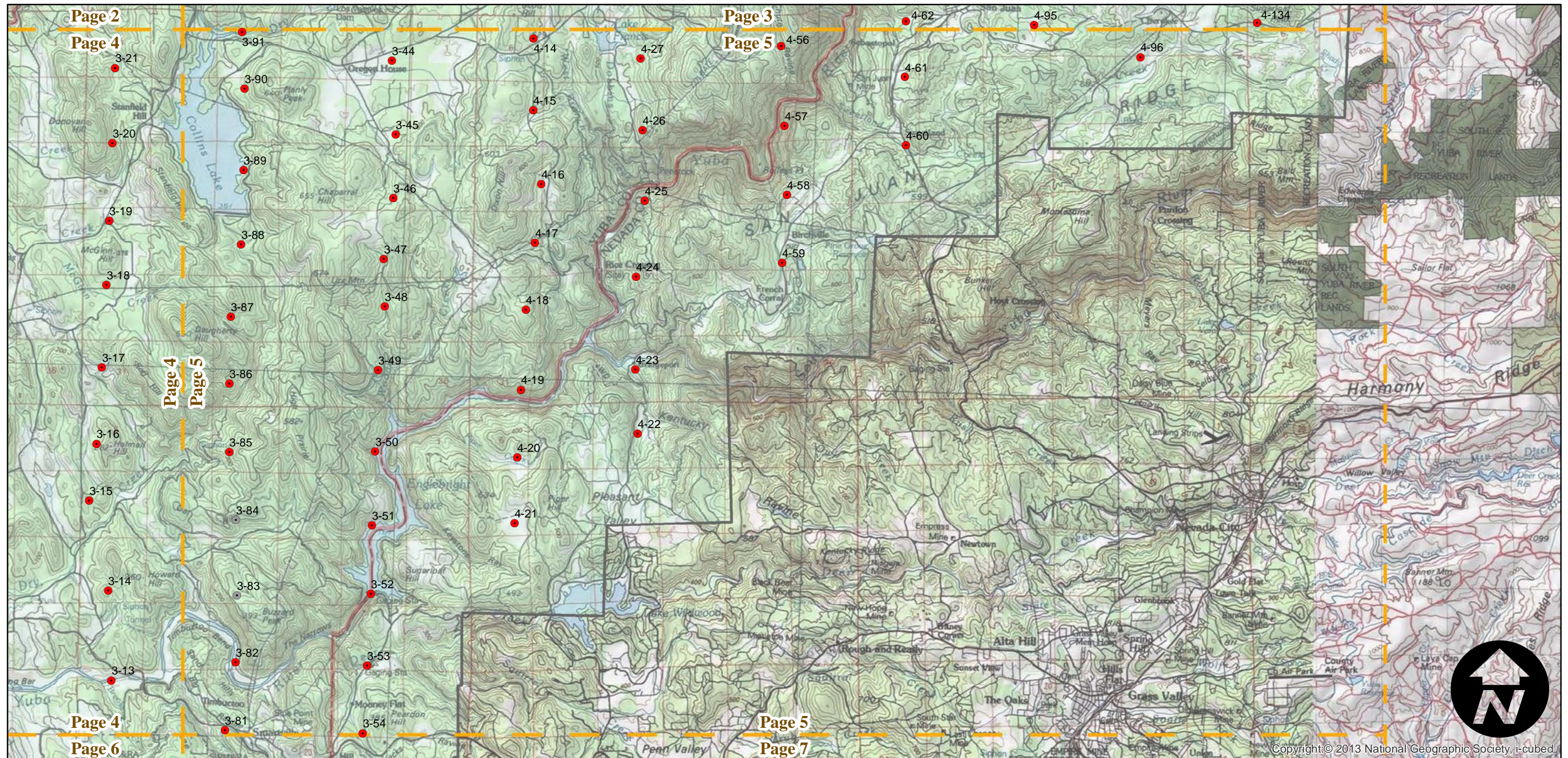
Counties: Yuba
Flight date(s): 01-01-1962 to 12-31-1962
Scale: 1: 20,000
Overlap: 60%

Complete Metadata:
<http://www.library.ucsb.edu/mil/aerial-photography-tools>

FLIGHT LOCATION



- MIL owns frame
- MIL does not own frame

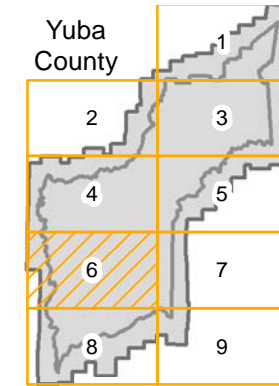


CAS-YUB

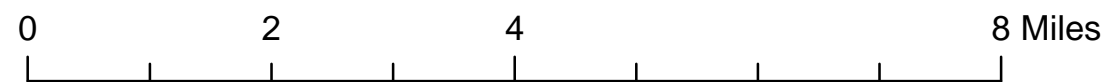
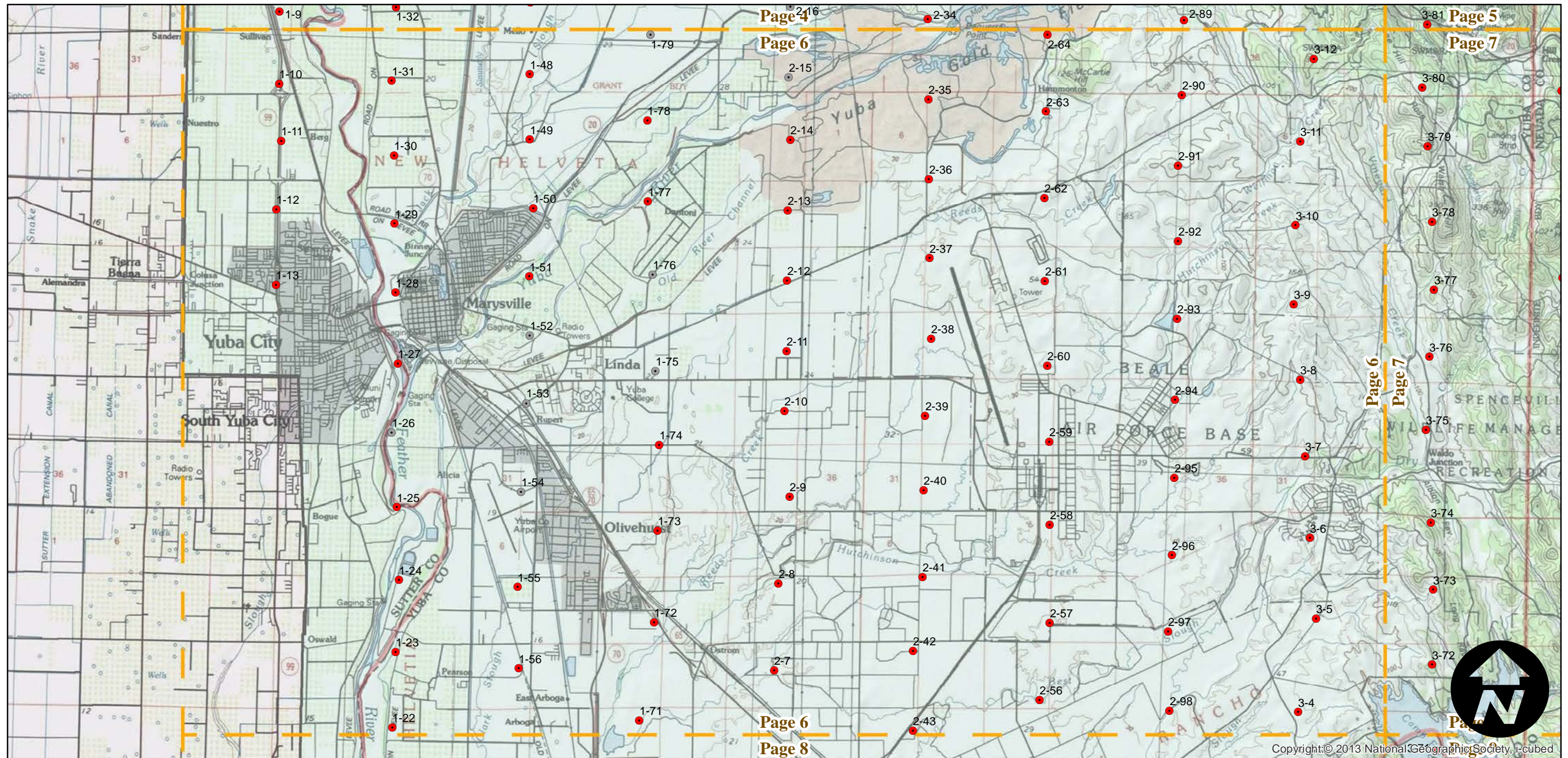
Counties: Yuba
 Flight date(s): 01-01-1962 to 12-31-1962
 Scale: 1: 20,000
 Overlap: 60%

Complete Metadata:
<http://www.library.ucsb.edu/mil/aerial-photography-tools>

FLIGHT LOCATION



- MIL owns frame
- MIL does not own frame



Index to Aerial Photography
 Page 6 of 9

Scale of this index: 1:100,000

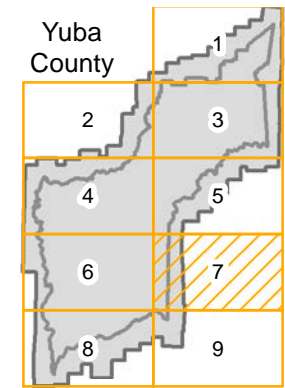
Copyright: © 2013 National Geographic Society, i-cubed

CAS-YUB

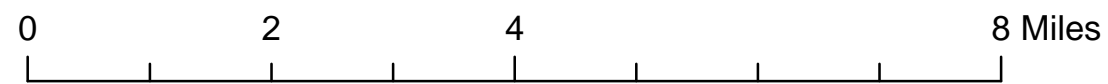
Counties: Yuba
 Flight date(s): 01-01-1962 to 12-31-1962
 Scale: 1: 20,000
 Overlap: 60%

Complete Metadata:
<http://www.library.ucsb.edu/mil/aerial-photography-tools>

FLIGHT LOCATION



- MIL owns frame
- MIL does not own frame

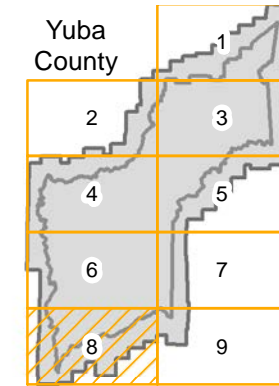


CAS-YUB

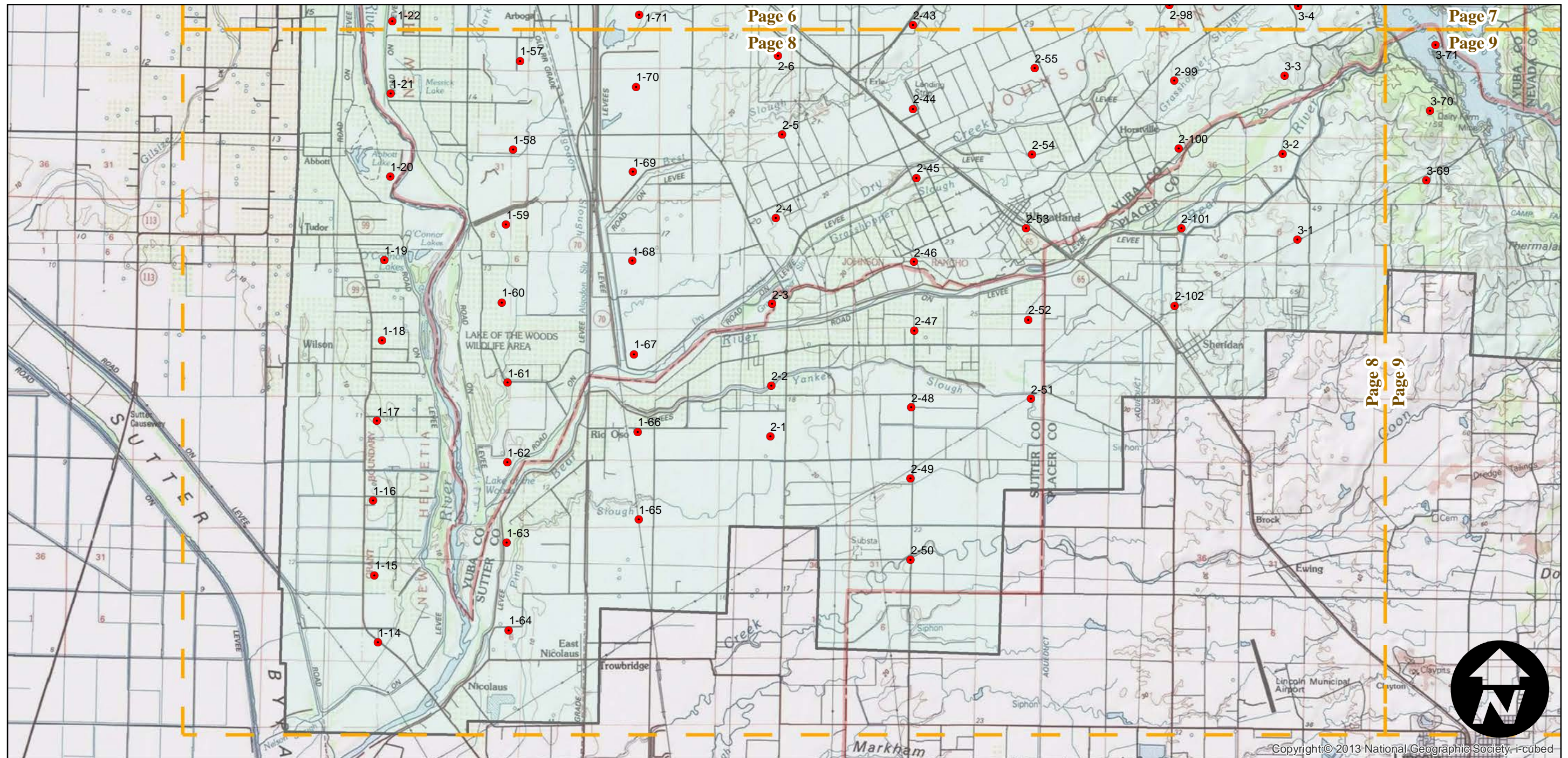
Counties: Yuba
 Flight date(s): 01-01-1962 to 12-31-1962
 Scale: 1: 20,000
 Overlap: 60%

Complete Metadata:
<http://www.library.ucsb.edu/mil/aerial-photography-tools>

FLIGHT LOCATION



- MIL owns frame
- MIL does not own frame



0 2 4 8 Miles

Index to Aerial Photography
 Page 8 of 9

Scale of this index: 1:100,000

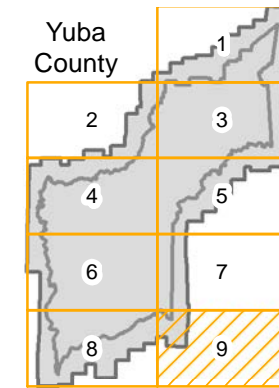
Copyright © 2013 National Geographic Society, i-cubed

CAS-YUB

Counties: Yuba
 Flight date(s): 01-01-1962 to 12-31-1962
 Scale: 1: 20,000
 Overlap: 60%

Complete Metadata:
<http://www.library.ucsb.edu/mil/aerial-photography-tools>

FLIGHT LOCATION



- MIL owns frame
- MIL does not own frame

