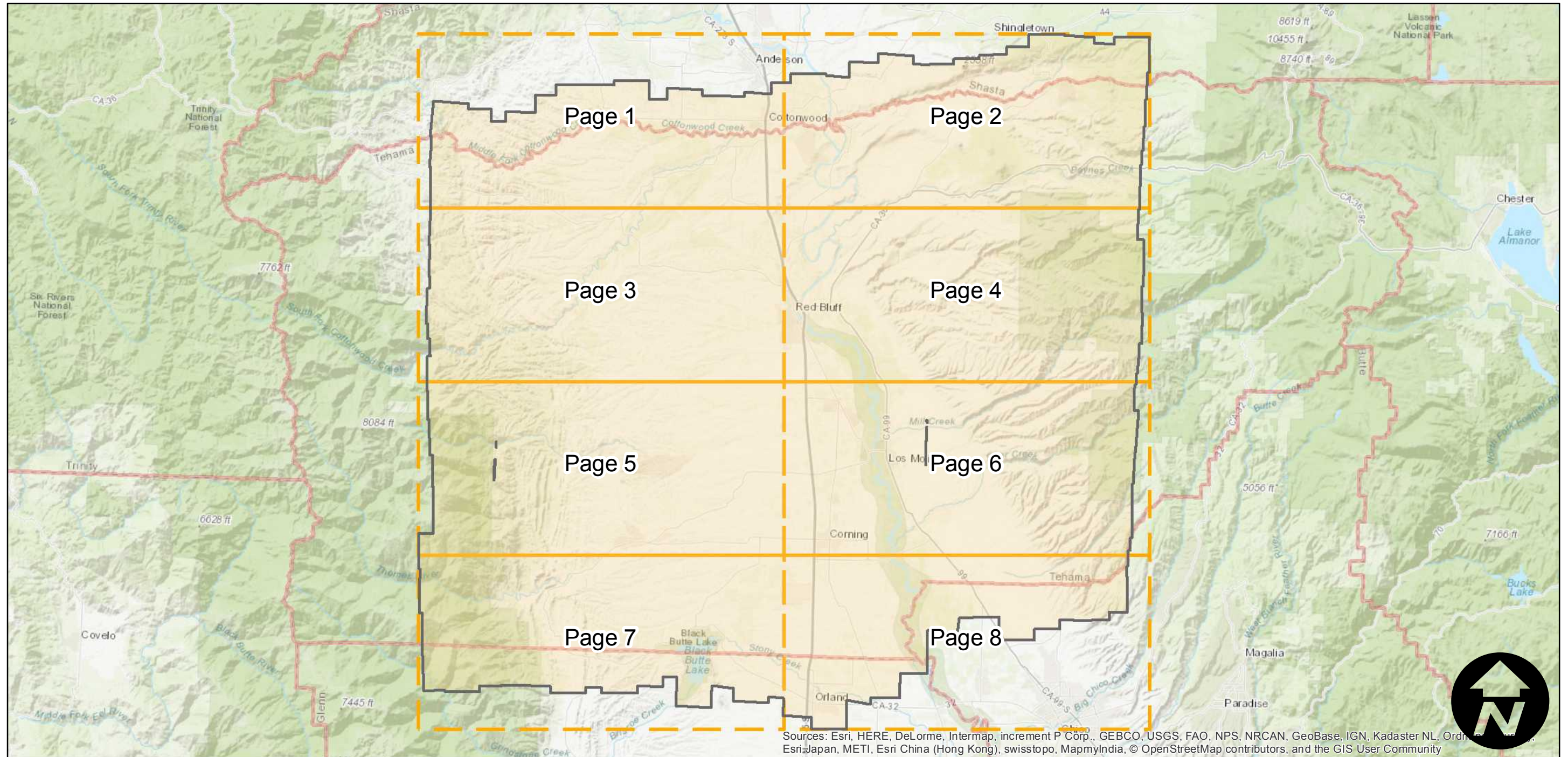
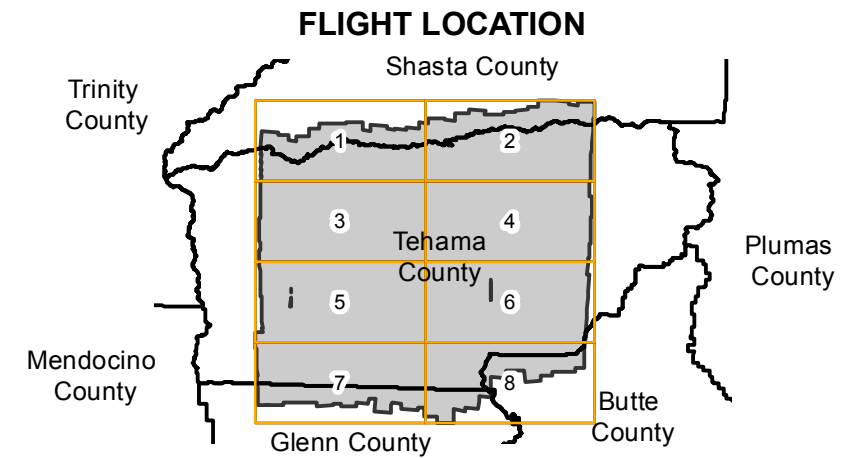


CAS-TEH (1:20K)

Counties: Tehama, Shasta, Butte, Glenn
 Flight date(s): 07-21-1962 to 10-15-1962
 Scale: 1:20,000
 Overlap: 60%

Note: Central 1/2 of county at 1:20,000. Eastern 1/4 and Western 1/4 at 1:15,840. Incomplete holdings, see index sheets for more information. Additional index scale is 1:50,000.

Complete Metadata:
<http://www.library.ucsb.edu/map-imagery-lab/aerial-photography-information>



Sources: Esri, HERE, DeLorme, Intermap, increment P Corp., GEBCO, USGS, FAO, NPS, NRCAN, GeoBase, IGN, Kadaster NL, Ordnance Survey, Esri Japan, METI, Esri China (Hong Kong), swisstopo, MapmyIndia, © OpenStreetMap contributors, and the GIS User Community



Index to Aerial Photography
 Page Key

Scale of this index: 1:500,000

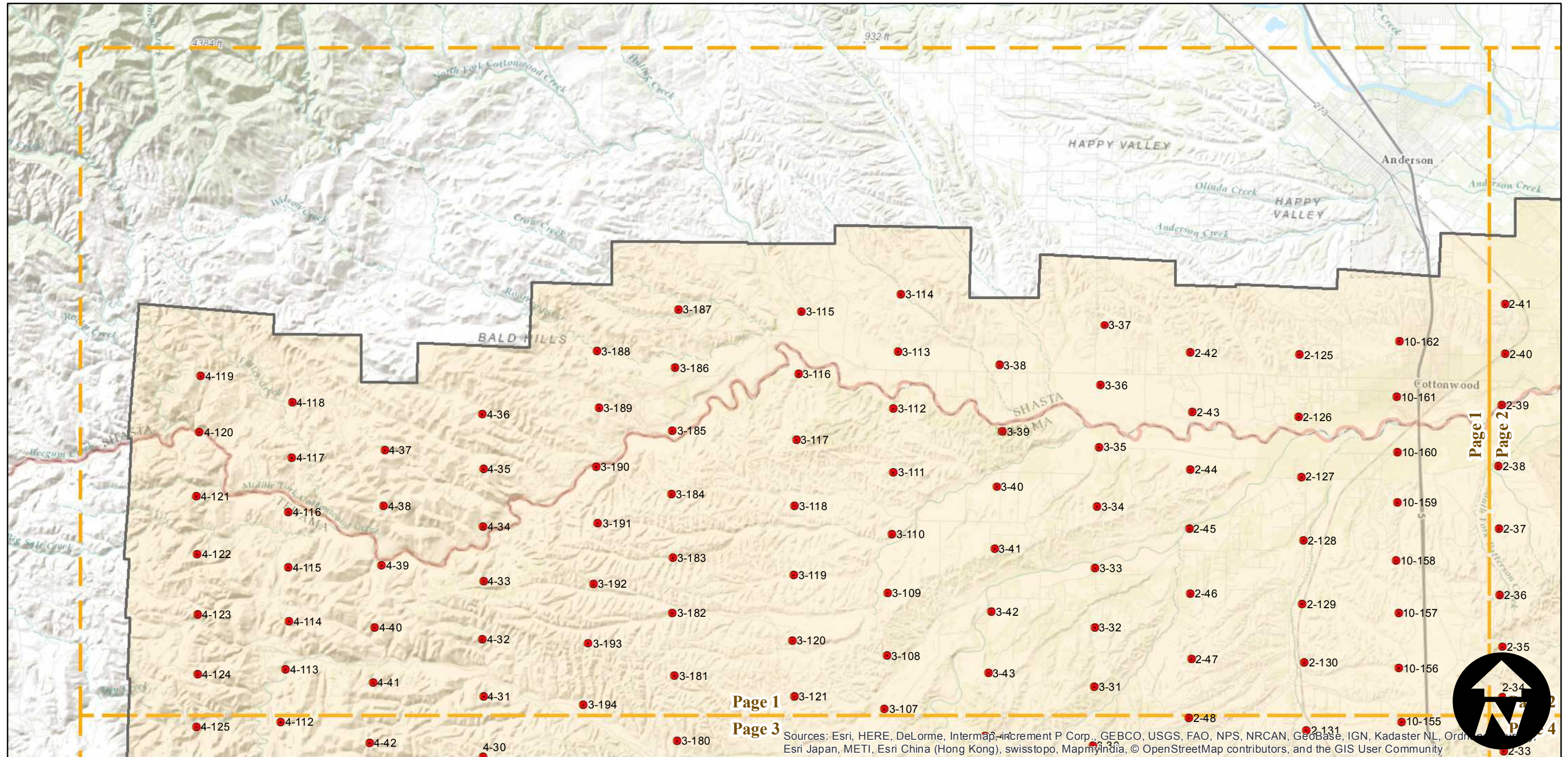
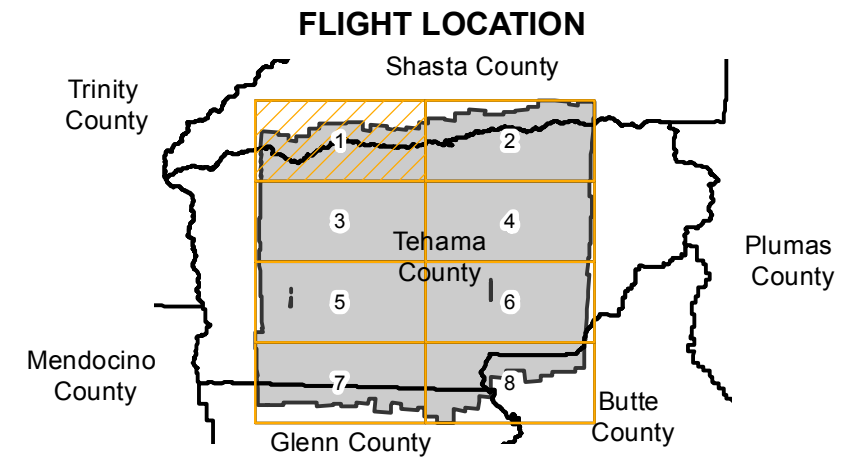
CAS-TEH (1:20K)

Counties: Tehama, Shasta, Butte, Glenn
 Flight date(s): 07-21-1962 to 10-15-1962
 Scale: 1:20,000
 Overlap: 60%

Complete Metadata:
<http://www.library.ucsb.edu/map-imagery-lab/aerial-photography-information>

Note: Central 1/2 of county at 1:20,000. Eastern 1/4 and Western 1/4 at 1:15,840. Incomplete holdings, see index sheets for more information. Additional index scale is 1:50,000.

- MIL owns frame
- MIL does not own frame



0 2 4 8 Miles

Index to Aerial Photography
 Page 1 of 8

Scale of this index: 1:130,000

Sources: Esri, HERE, DeLorme, Intermap, increment P Corp., GEBCO, USGS, FAO, NPS, NRCAN, Geobase, IGN, Kadaster NL, Ordnance Survey, Esri Japan, METI, Esri China (Hong Kong), swisstopo, MapmyIndia, © OpenStreetMap contributors, and the GIS User Community

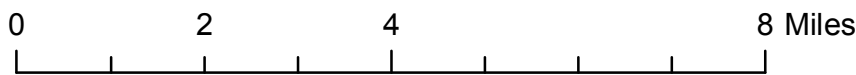
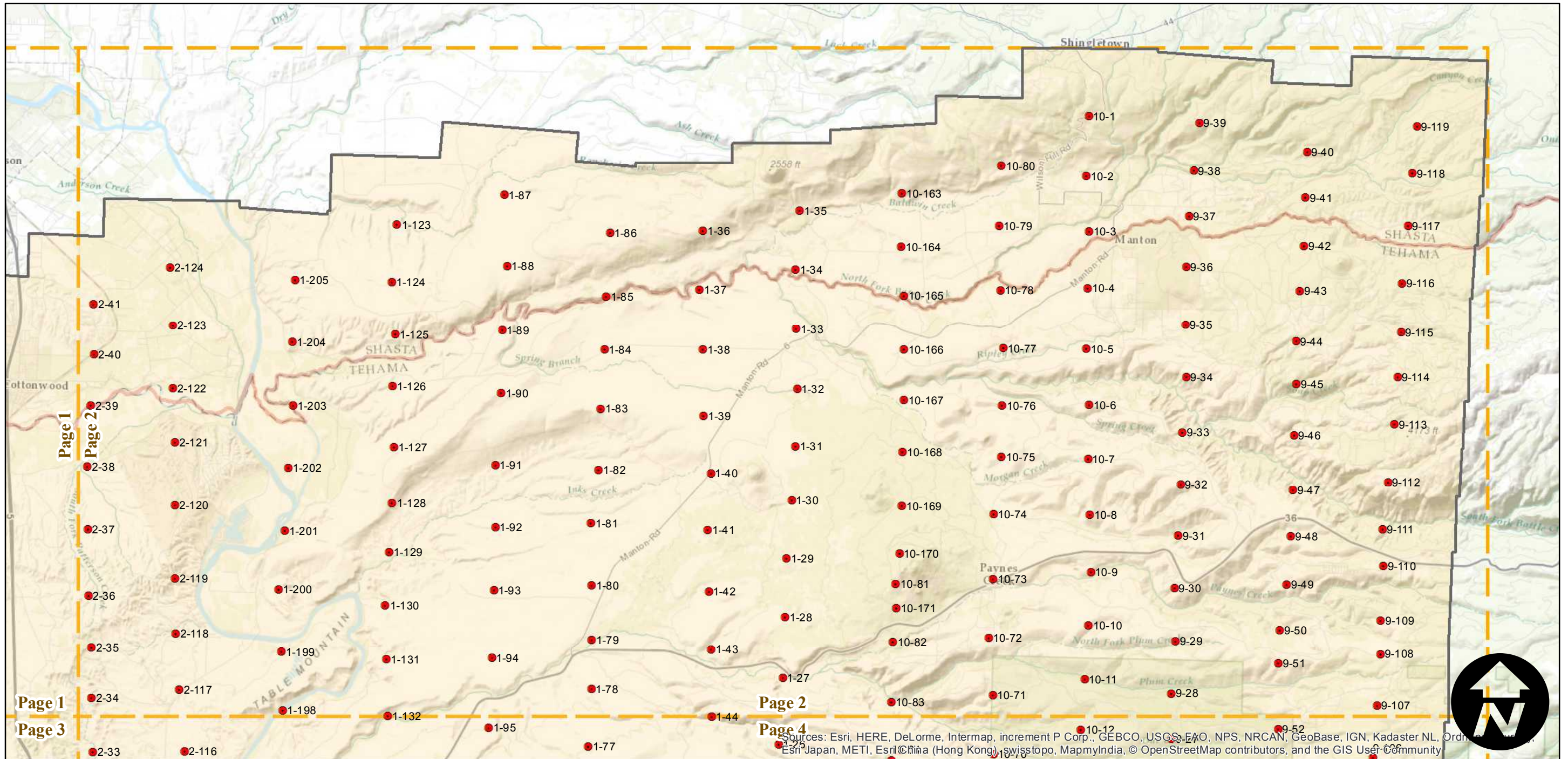
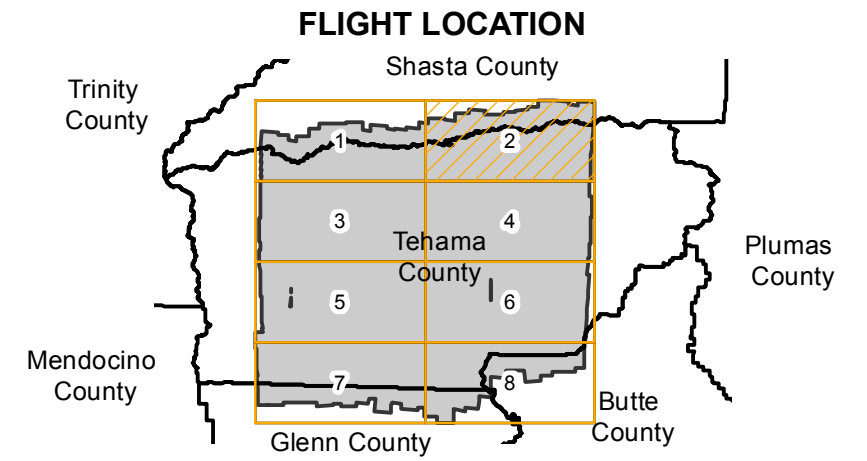
CAS-TEH (1:20K)

Counties: Tehama, Shasta, Butte, Glenn
 Flight date(s): 07-21-1962 to 10-15-1962
 Scale: 1:20,000
 Overlap: 60%

Complete Metadata:
<http://www.library.ucsb.edu/map-imagery-lab/aerial-photography-information>

Note: Central 1/2 of county at 1:20,000. Eastern 1/4 and Western 1/4 at 1:15,840. Incomplete holdings, see index sheets for more information. Additional index scale is 1:50,000.

- MIL owns frame
- MIL does not own frame



Sources: Esri, HERE, DeLorme, Intermap, increment P Corp., GEBCO, USGS, FAO, NPS, NRCAN, GeoBase, IGN, Kadaster NL, Ordnance Survey, Esri Japan, METI, Esri China (Hong Kong), Swisstopo, MapmyIndia, © OpenStreetMap contributors, and the GIS User Community

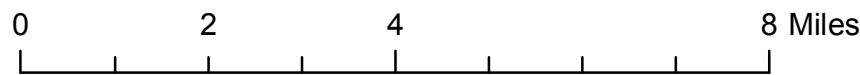
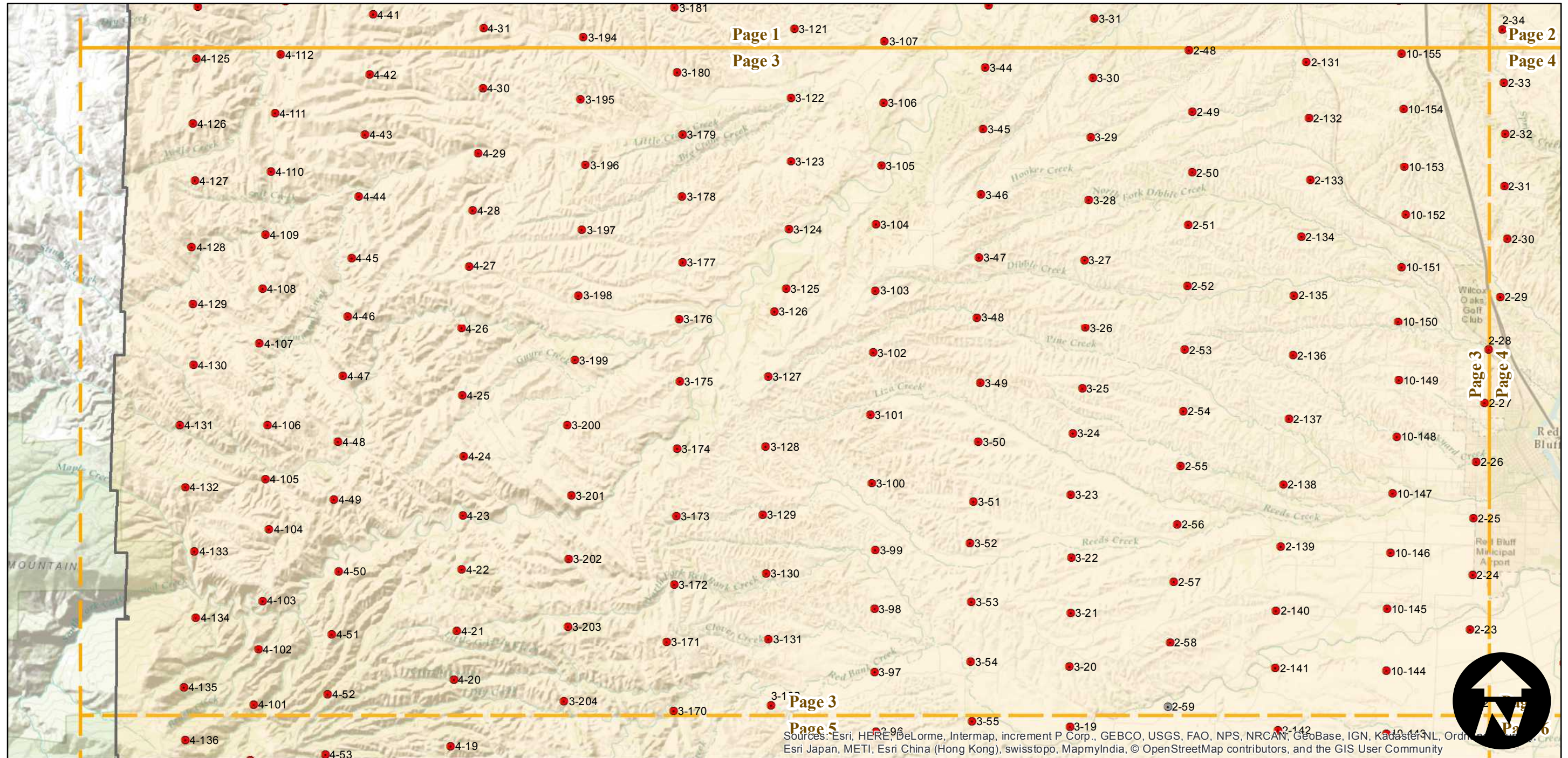
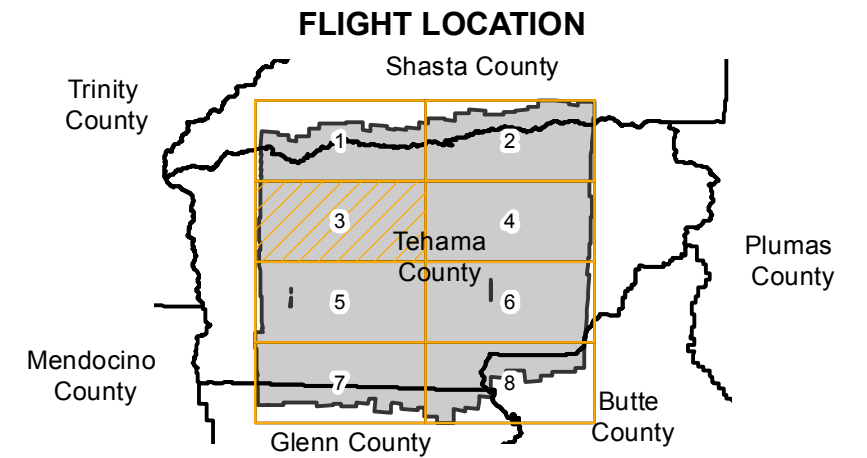
CAS-TEH (1:20K)

Counties: Tehama, Shasta, Butte, Glenn
 Flight date(s): 07-21-1962 to 10-15-1962
 Scale: 1:20,000
 Overlap: 60%

Complete Metadata:
<http://www.library.ucsb.edu/map-imagery-lab/aerial-photography-information>

Note: Central 1/2 of county at 1:20,000. Eastern 1/4 and Western 1/4 at 1:15,840. Incomplete holdings, see index sheets for more information. Additional index scale is 1:50,000.

- MIL owns frame
- MIL does not own frame



Sources: Esri, HERE, DeLorme, Intermap, increment P Corp., GEBCO, USGS, FAO, NPS, NRCAN, GeoBase, IGN, Kadaster NL, Ordnance Survey, Esri Japan, METI, Esri China (Hong Kong), swisstopo, MapmyIndia, © OpenStreetMap contributors, and the GIS User Community



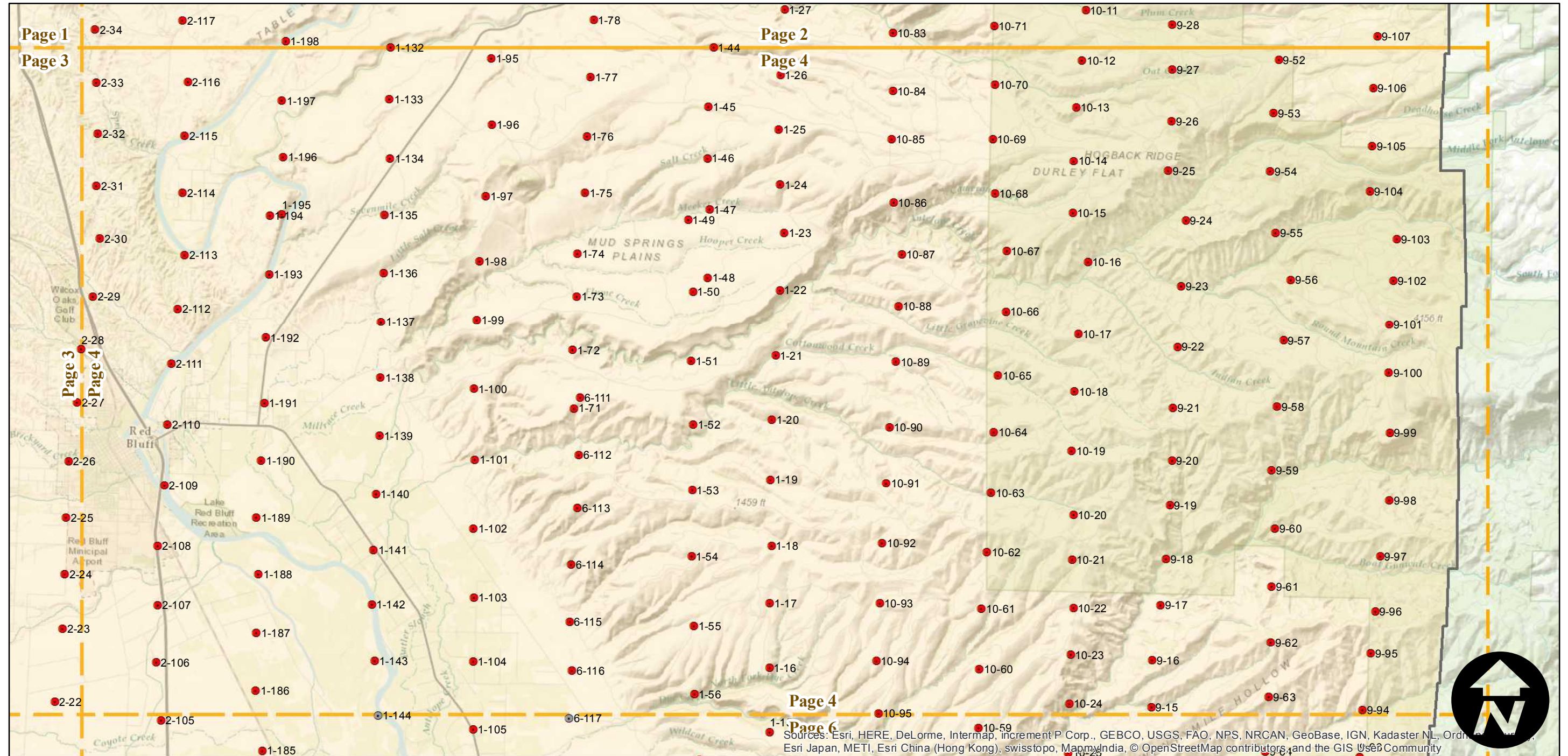
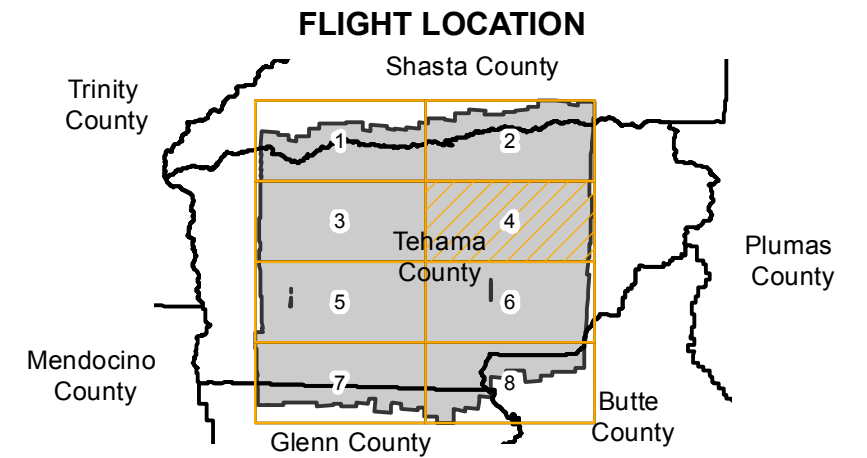
CAS-TEH (1:20K)

Counties: Tehama, Shasta, Butte, Glenn
 Flight date(s): 07-21-1962 to 10-15-1962
 Scale: 1:20,000
 Overlap: 60%

Complete Metadata:
<http://www.library.ucsb.edu/map-imagery-lab/aerial-photography-information>

Note: Central 1/2 of county at 1:20,000. Eastern 1/4 and Western 1/4 at 1:15,840. Incomplete holdings, see index sheets for more information. Additional index scale is 1:50,000.

- MIL owns frame
- MIL does not own frame



0 2 4 8 Miles

Index to Aerial Photography
 Page 4 of 8

Scale of this index: 1:130,000

Sources: Esri, HERE, DeLorme, Intermap, increment P Corp., GEBCO, USGS, FAO, NPS, NRCAN, GeoBase, IGN, Kadaster NL, Ordnance Survey, Esri Japan, METI, Esri China (Hong Kong), swisstopo, MapmyIndia, © OpenStreetMap contributors, and the GIS User Community

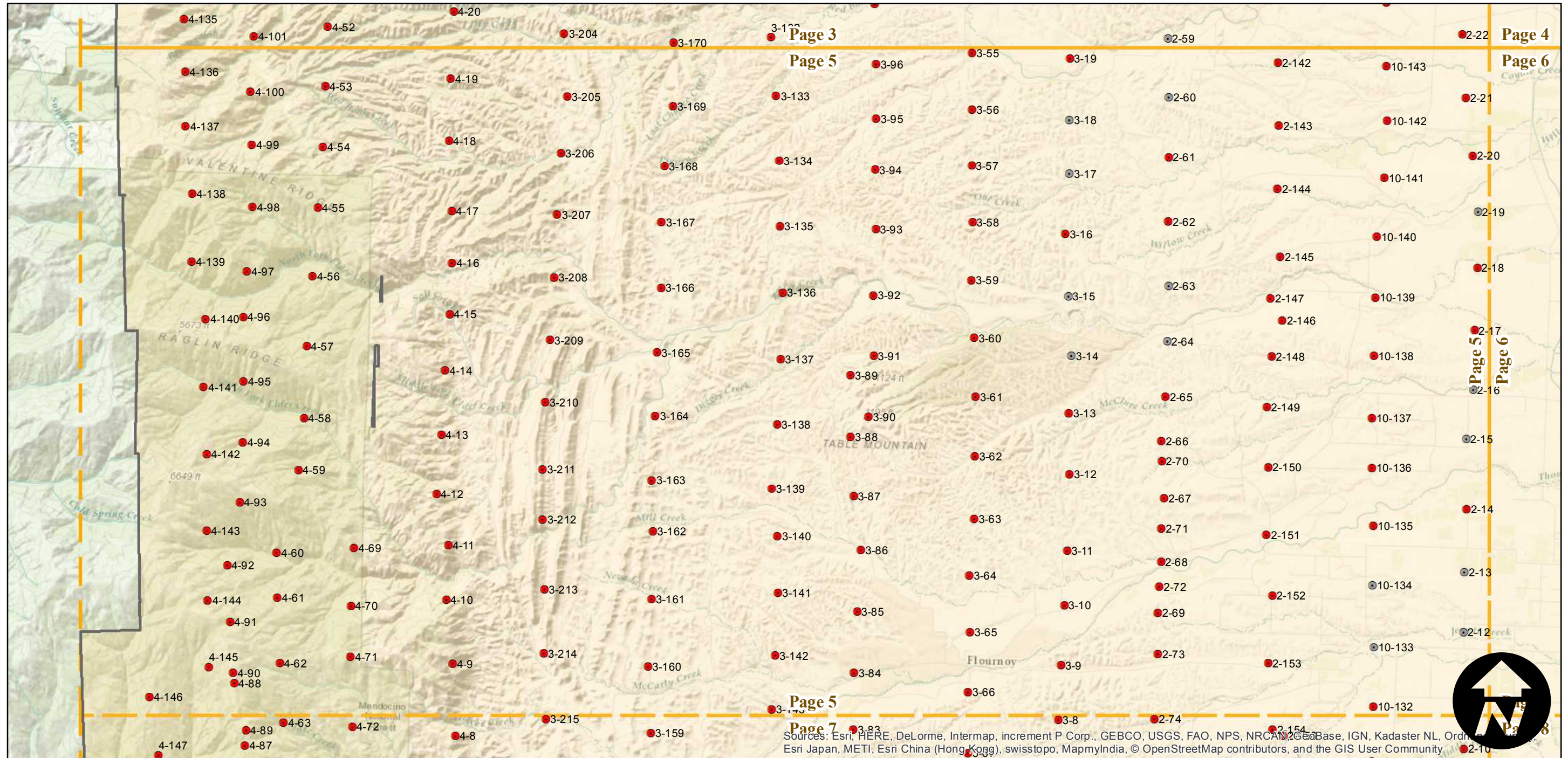
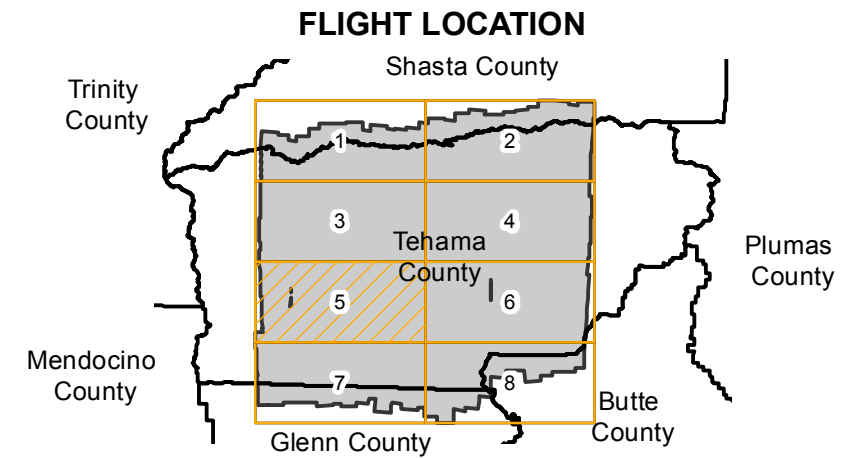
CAS-TEH (1:20K)

Counties: Tehama, Shasta, Butte, Glenn
 Flight date(s): 07-21-1962 to 10-15-1962
 Scale: 1:20,000
 Overlap: 60%

Complete Metadata:
<http://www.library.ucsb.edu/map-imagery-lab/aerial-photography-information>

Note: Central 1/2 of county at 1:20,000. Eastern 1/4 and Western 1/4 at 1:15,840. Incomplete holdings, see index sheets for more information. Additional index scale is 1:50,000.

- MIL owns frame
- MIL does not own frame



0 2 4 8 Miles

Index to Aerial Photography
 Page 5 of 8

Scale of this index: 1:130,000

Sources: Esri, HERE, DeLorme, Intermap, increment P Corp., GEBCO, USGS, FAO, NPS, NRCAN, GeoBase, IGN, Kadaster NL, Ordnance Survey, Esri Japan, METI, Esri China (Hong Kong), swisstopo, MapmyIndia, © OpenStreetMap contributors, and the GIS User Community

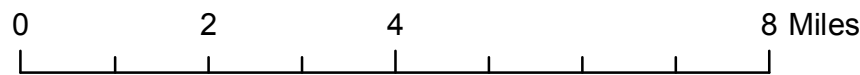
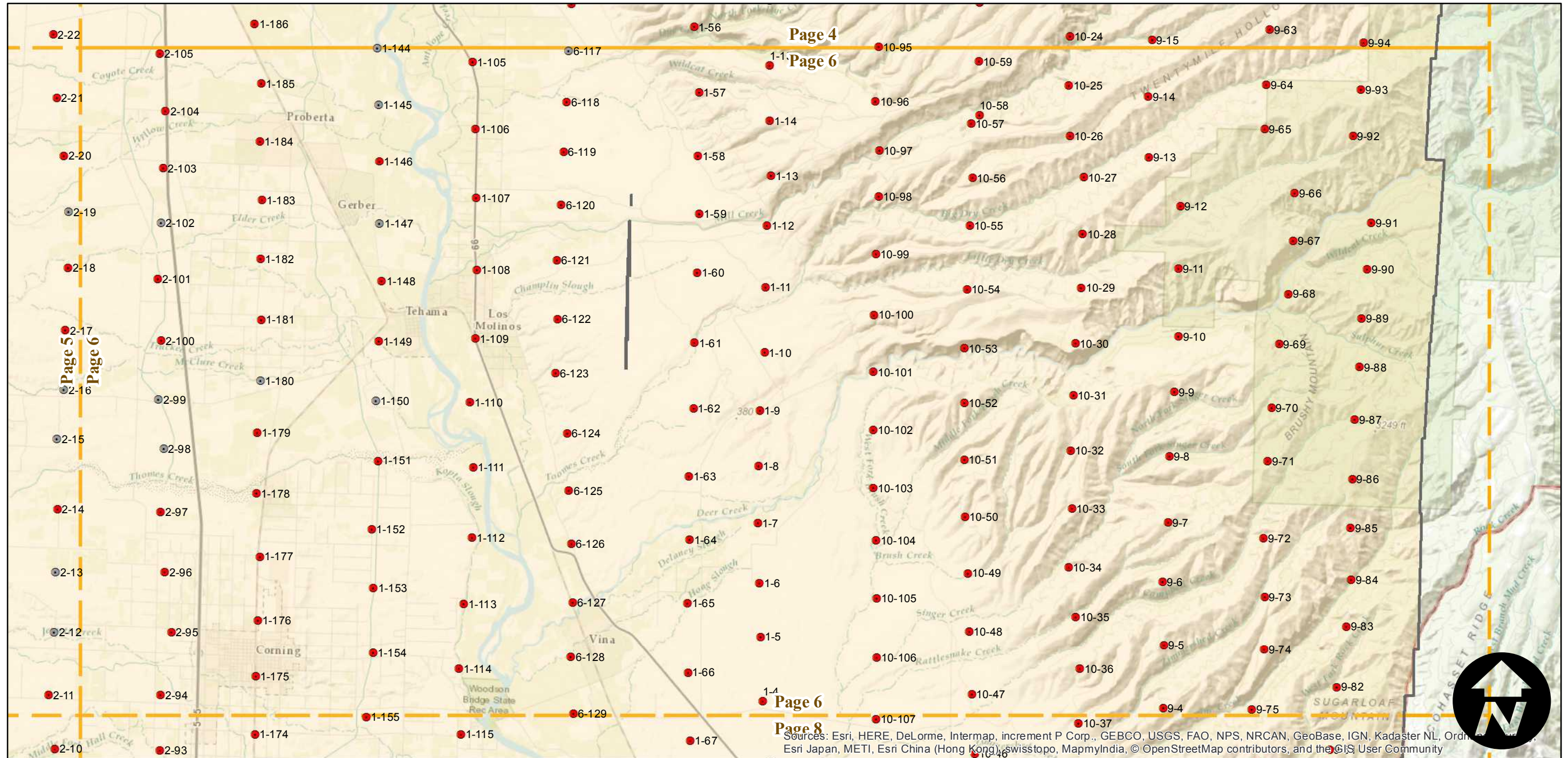
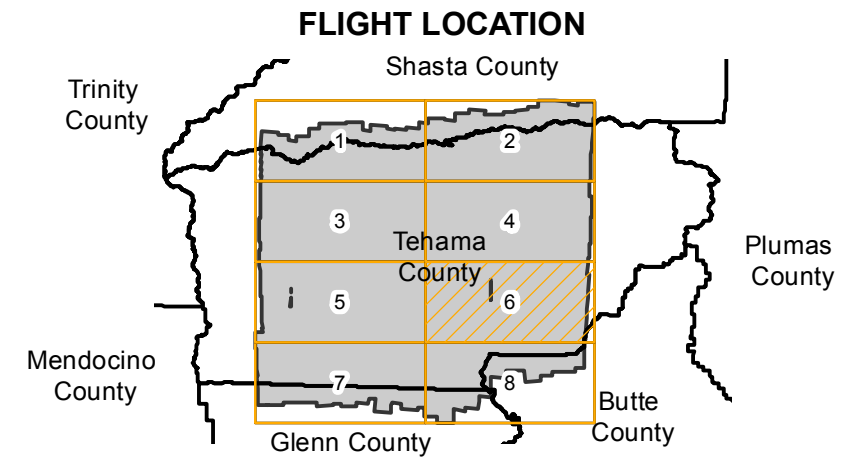
CAS-TEH (1:20K)

Counties: Tehama, Shasta, Butte, Glenn
 Flight date(s): 07-21-1962 to 10-15-1962
 Scale: 1:20,000
 Overlap: 60%

Complete Metadata:
<http://www.library.ucsb.edu/map-imagery-lab/aerial-photography-information>

Note: Central 1/2 of county at 1:20,000. Eastern 1/4 and Western 1/4 at 1:15,840. Incomplete holdings, see index sheets for more information. Additional index scale is 1:50,000.

- MIL owns frame
- MIL does not own frame



Sources: Esri, HERE, DeLorme, Intermap, increment P Corp., GEBCO, USGS, FAO, NPS, NRCAN, GeoBase, IGN, Kadaster NL, Ordnance Survey, Esri Japan, METI, Esri China (Hong Kong), swisstopo, MapmyIndia, © OpenStreetMap contributors, and the GIS User Community

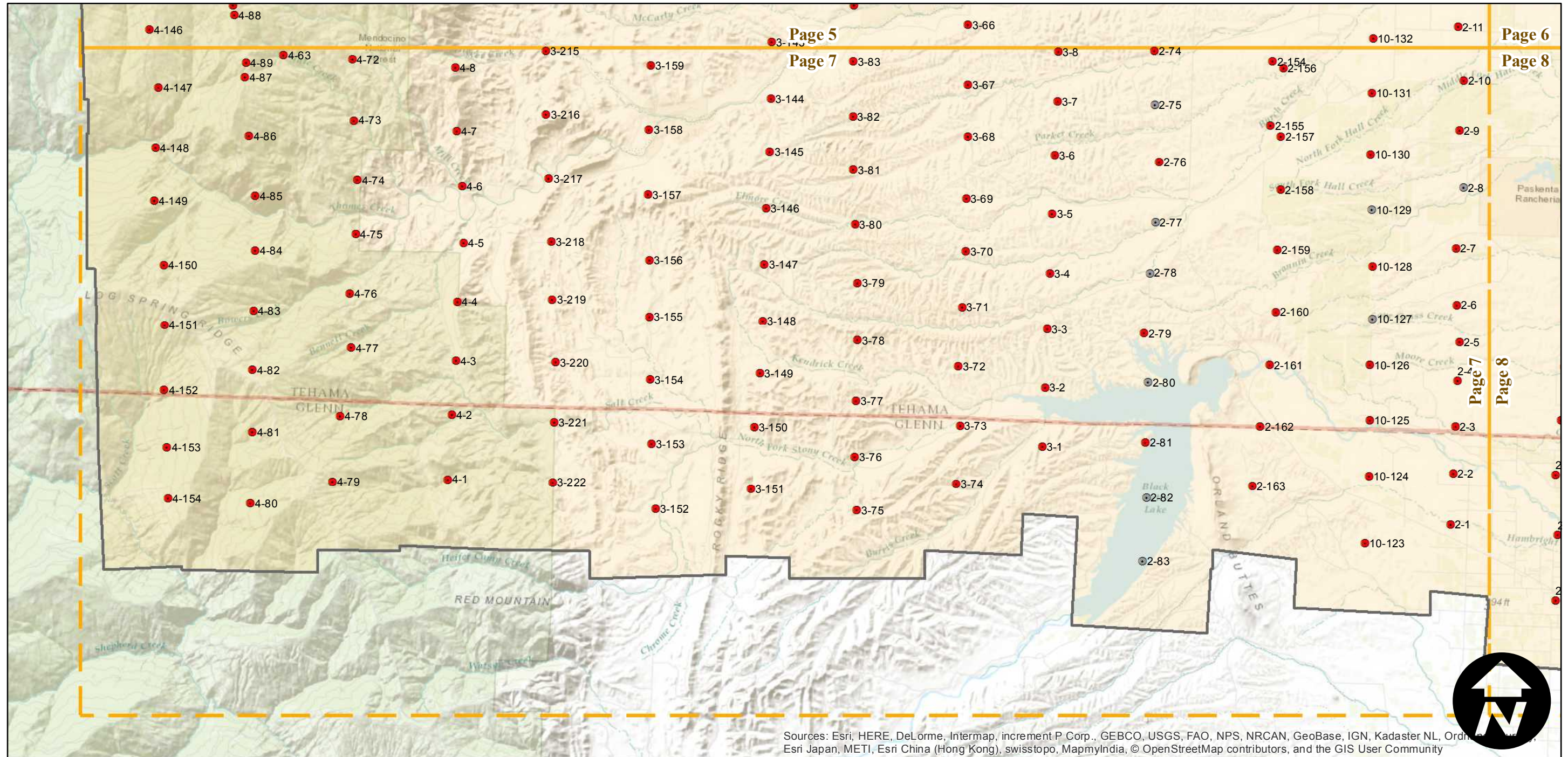
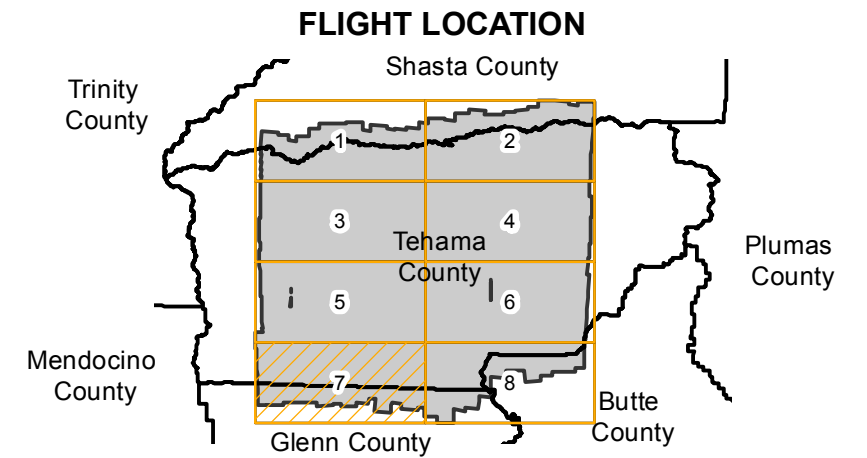
CAS-TEH (1:20K)

Counties: Tehama, Shasta, Butte, Glenn
 Flight date(s): 07-21-1962 to 10-15-1962
 Scale: 1:20,000
 Overlap: 60%

Complete Metadata:
<http://www.library.ucsb.edu/map-imagery-lab/aerial-photography-information>

Note: Central 1/2 of county at 1:20,000. Eastern 1/4 and Western 1/4 at 1:15,840. Incomplete holdings, see index sheets for more information. Additional index scale is 1:50,000.

- MIL owns frame
- MIL does not own frame



Sources: Esri, HERE, DeLorme, Intermap, increment P Corp., GEBCO, USGS, FAO, NPS, NRCAN, GeoBase, IGN, Kadaster NL, Ordnance Survey, Esri Japan, METI, Esri China (Hong Kong), swisstopo, MapmyIndia, © OpenStreetMap contributors, and the GIS User Community

0 2 4 8 Miles

Index to Aerial Photography
 Page 7 of 8

Scale of this index: 1:130,000

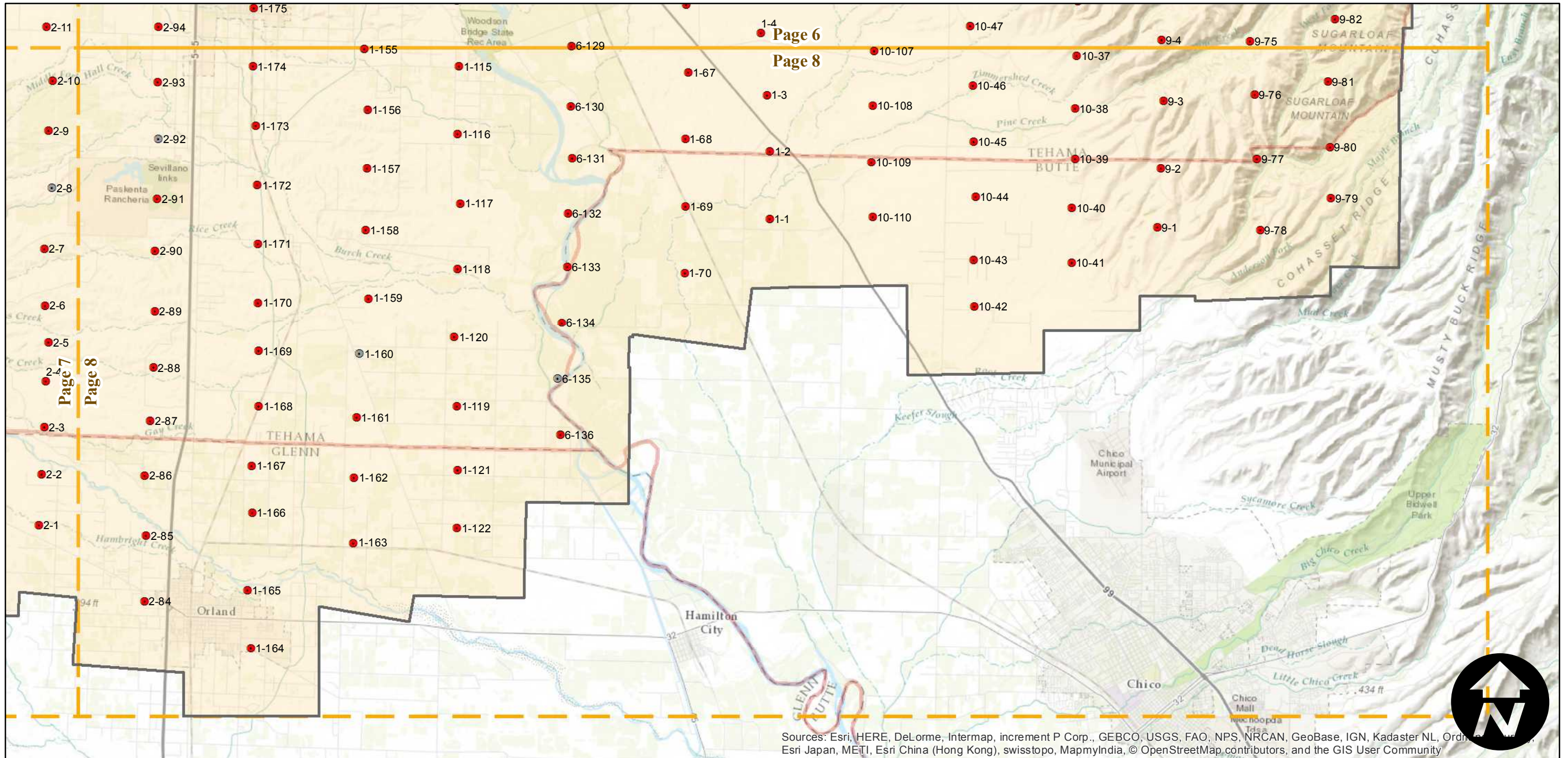
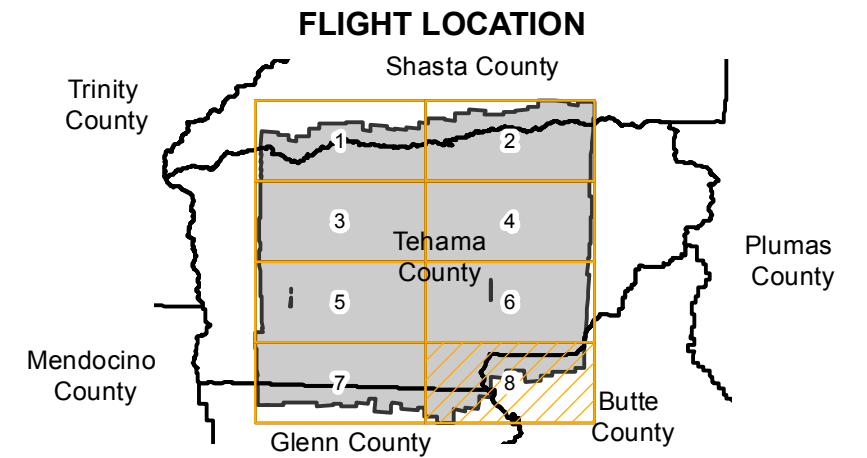
CAS-TEH (1:20K)

Counties: Tehama, Shasta, Butte, Glenn
 Flight date(s): 07-21-1962 to 10-15-1962
 Scale: 1:20,000
 Overlap: 60%

Complete Metadata:
<http://www.library.ucsb.edu/map-imagery-lab/aerial-photography-information>

Note: Central 1/2 of county at 1:20,000. Eastern 1/4 and Western 1/4 at 1:15,840. Incomplete holdings, see index sheets for more information. Additional index scale is 1:50,000.

- MIL owns frame
- MIL does not own frame



Sources: Esri, HERE, DeLorme, Intermap, increment P Corp., GEBCO, USGS, FAO, NPS, NRCAN, GeoBase, IGN, Kadaster NL, Ordnance Survey, Esri Japan, METI, Esri China (Hong Kong), swisstopo, MapmyIndia, © OpenStreetMap contributors, and the GIS User Community

0 2 4 8 Miles

Index to Aerial Photography
 Page 8 of 8

Scale of this index: 1:130,000