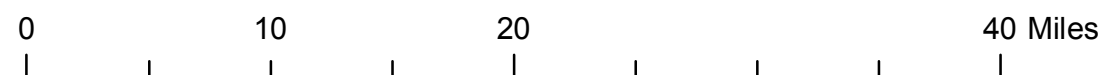
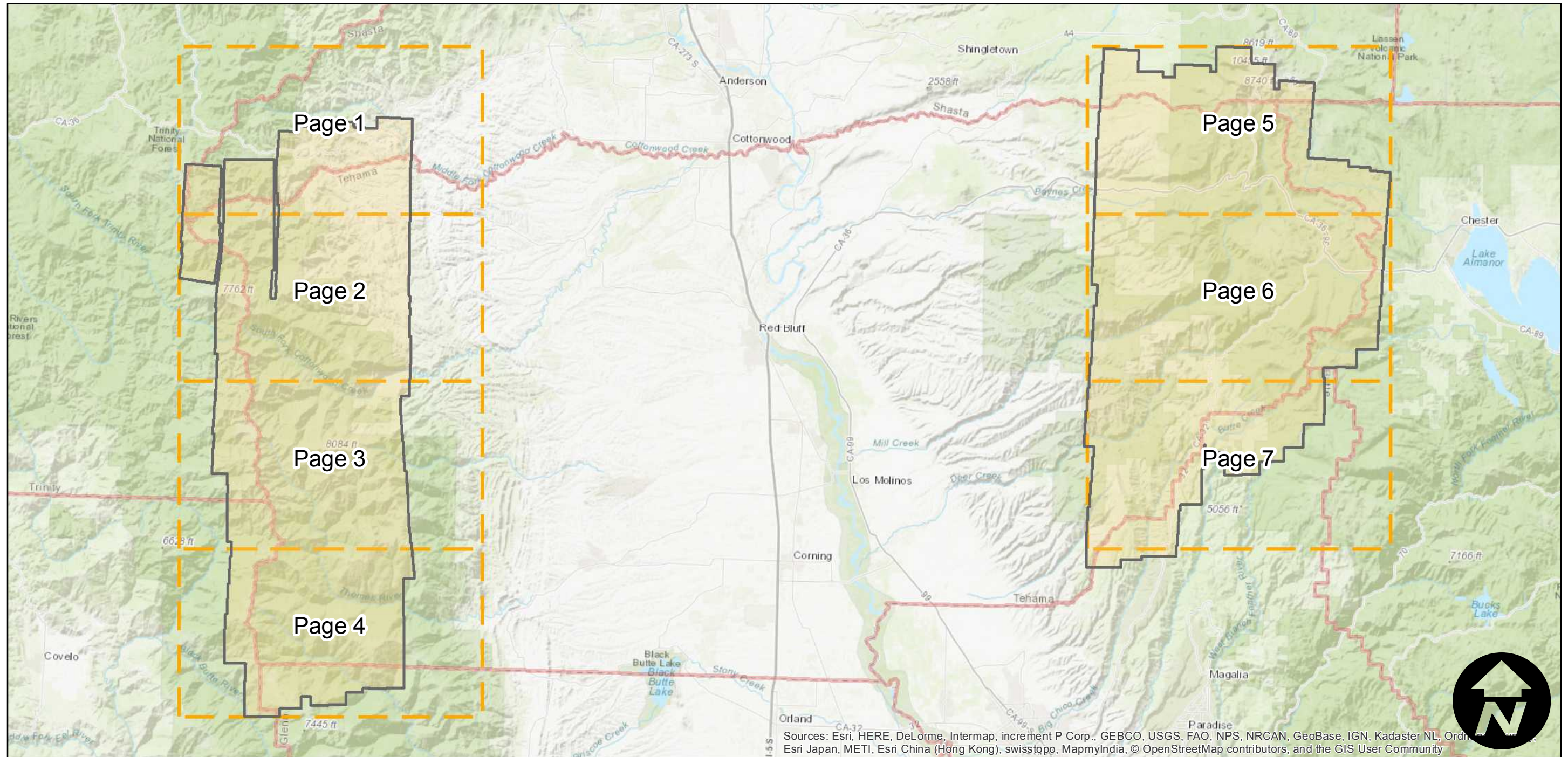
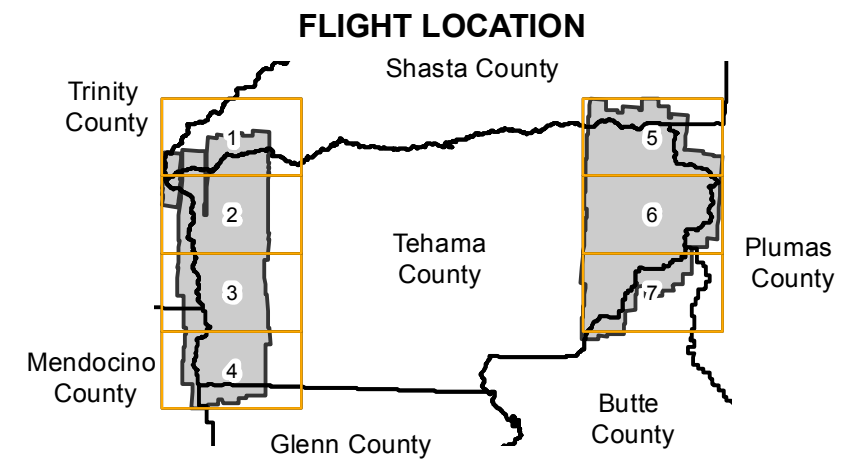


CAS-TEH (1:15K)

Counties: Tehama, Shasta, Butte, Glenn, Mendocino, Trinity
 Flight date(s): 07-21-1962 to 10-15-1962
 Scale: 1:15,840
 Overlap: 60%

Note: Central 1/2 of county at 1:20,000. Eastern 1/4 and Western 1/4 at 1:15,840. Incomplete holdings, see index sheets for more information. Additional index scale is 1:50,000.

Complete Metadata:
<http://www.library.ucsb.edu/map-imagery-lab/aerial-photography-information>



Index to Aerial Photography
 Page Key

Scale of this index: 1:500,000

Sources: Esri, HERE, DeLorme, Intermap, increment P Corp., GEBCO, USGS, FAO, NPS, NRCAN, GeoBase, IGN, Kadaster NL, Ordnance Survey, Esri Japan, METI, Esri China (Hong Kong), swisstopo, MapmyIndia, © OpenStreetMap contributors, and the GIS User Community

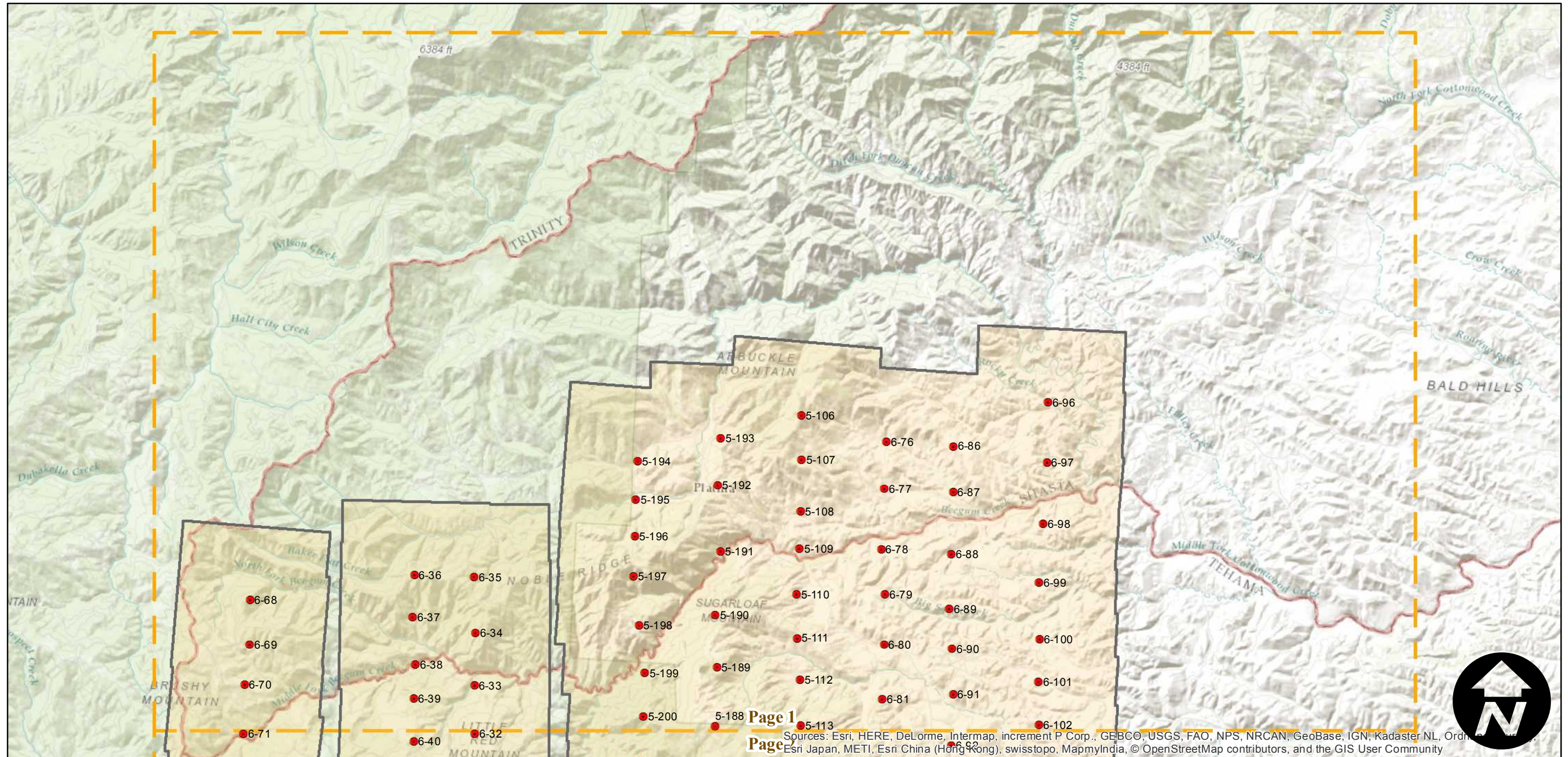
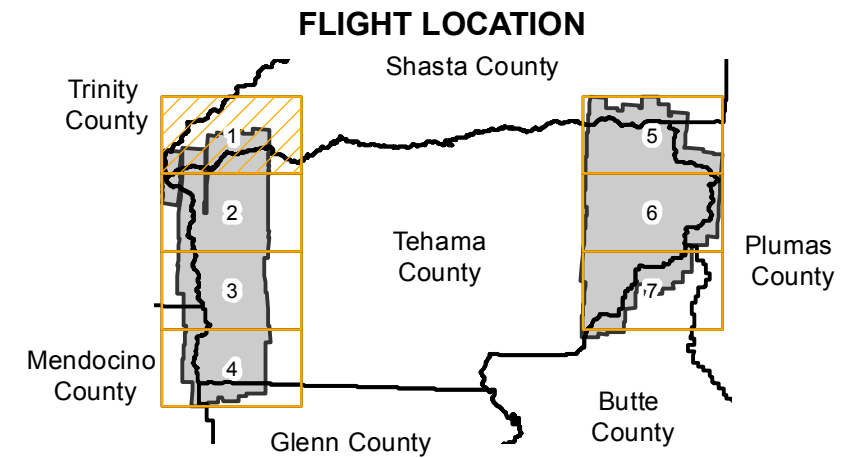
CAS-TEH (1:15K)

Counties: Tehama, Shasta, Butte, Glenn, Mendocino, Trinity
 Flight date(s): 07-21-1962 to 10-15-1962
 Scale: 1:15,840
 Overlap: 60%

Complete Metadata:
<http://www.library.ucsb.edu/map-imagery-lab/aerial-photography-information>

Note: Central 1/2 of county at 1:20,000. Eastern 1/4 and Western 1/4 at 1:15,840. Incomplete holdings, see index sheets for more information. Additional index scale is 1:50,000.

- MIL owns frame
- MIL does not own frame



0 2 4 8 Miles

Index to Aerial Photography
 Page 1 of 7

Scale of this index: 1:120,000

Page 1
 Page

Sources: Esri, HERE, DeLorme, Intermap, increment P Corp., GEBCO, USGS, FAO, NPS, NRCAN, GeoBase, IGN, Kadaster NL, Ordnance Survey, Esri Japan, METI, Esri China (Hong Kong), swisstopo, MapmyIndia, © OpenStreetMap contributors, and the GIS User Community

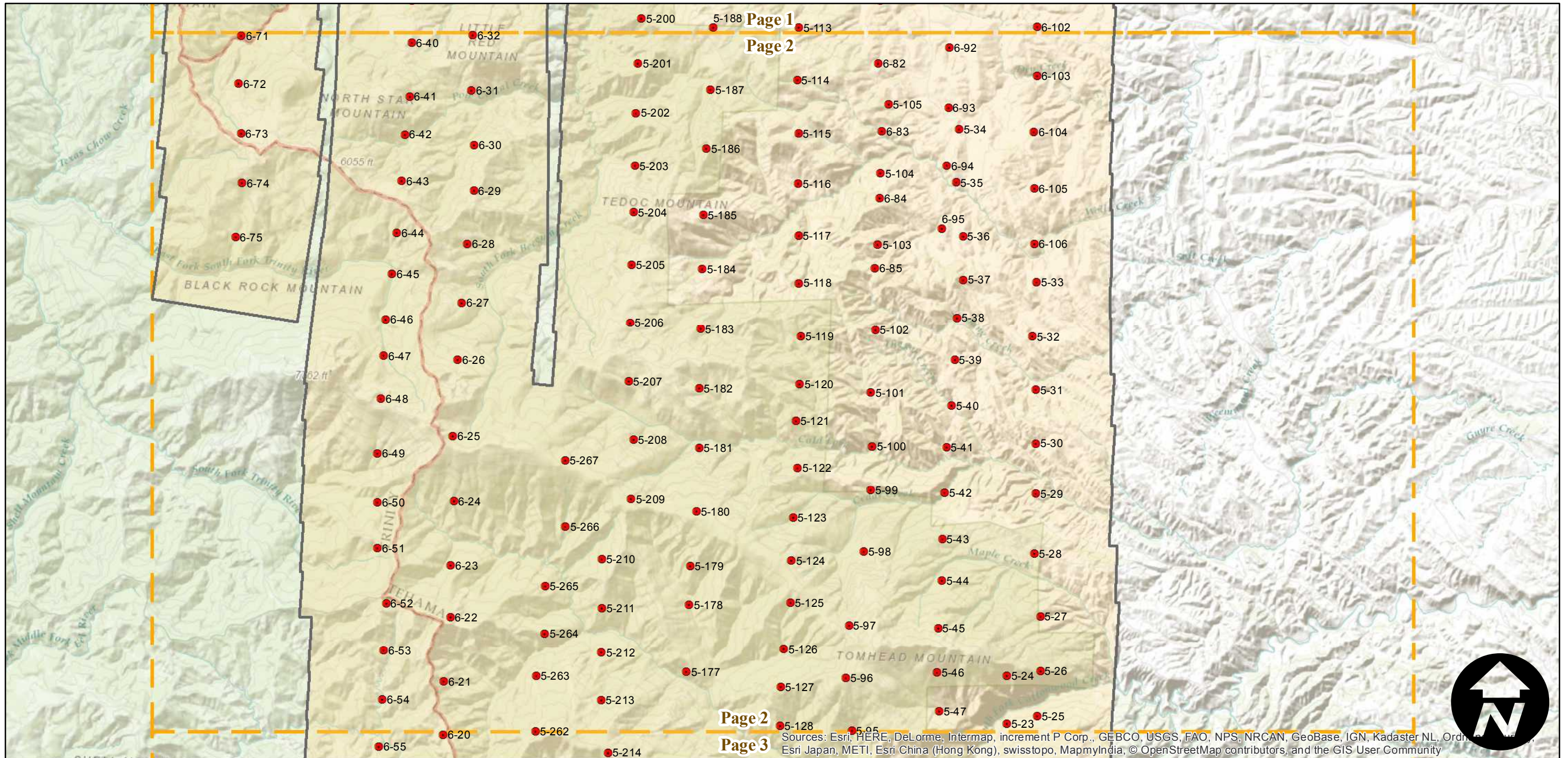
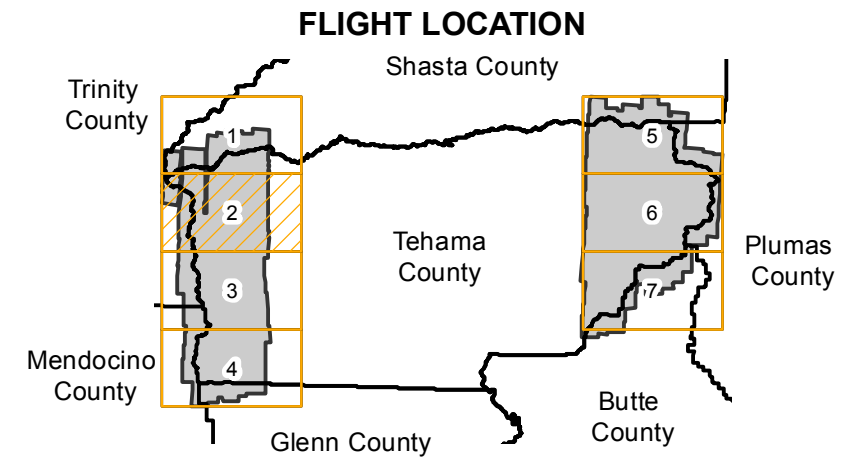
CAS-TEH (1:15K)

Counties: Tehama, Shasta, Butte, Glenn, Mendocino, Trinity
 Flight date(s): 07-21-1962 to 10-15-1962
 Scale: 1:15,840
 Overlap: 60%

Complete Metadata:
<http://www.library.ucsb.edu/map-imagery-lab/aerial-photography-information>

Note: Central 1/2 of county at 1:20,000. Eastern 1/4 and Western 1/4 at 1:15,840. Incomplete holdings, see index sheets for more information. Additional index scale is 1:50,000.

- MIL owns frame
- MIL does not own frame



0 2 4 8 Miles

Index to Aerial Photography
 Page 2 of 7

Scale of this index: 1:120,000

Sources: Esri, HERE, DeLorme, Intermap, increment P Corp., GEBCO, USGS, FAO, NPS, NRCAN, GeoBase, IGN, Kadaster NL, Ordnance Survey, Esri Japan, METI, Esri China (Hong Kong), swisstopo, MapmyIndia, © OpenStreetMap contributors, and the GIS User Community

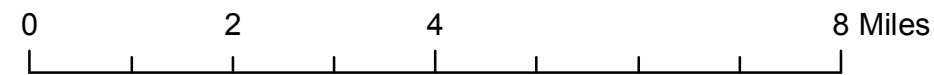
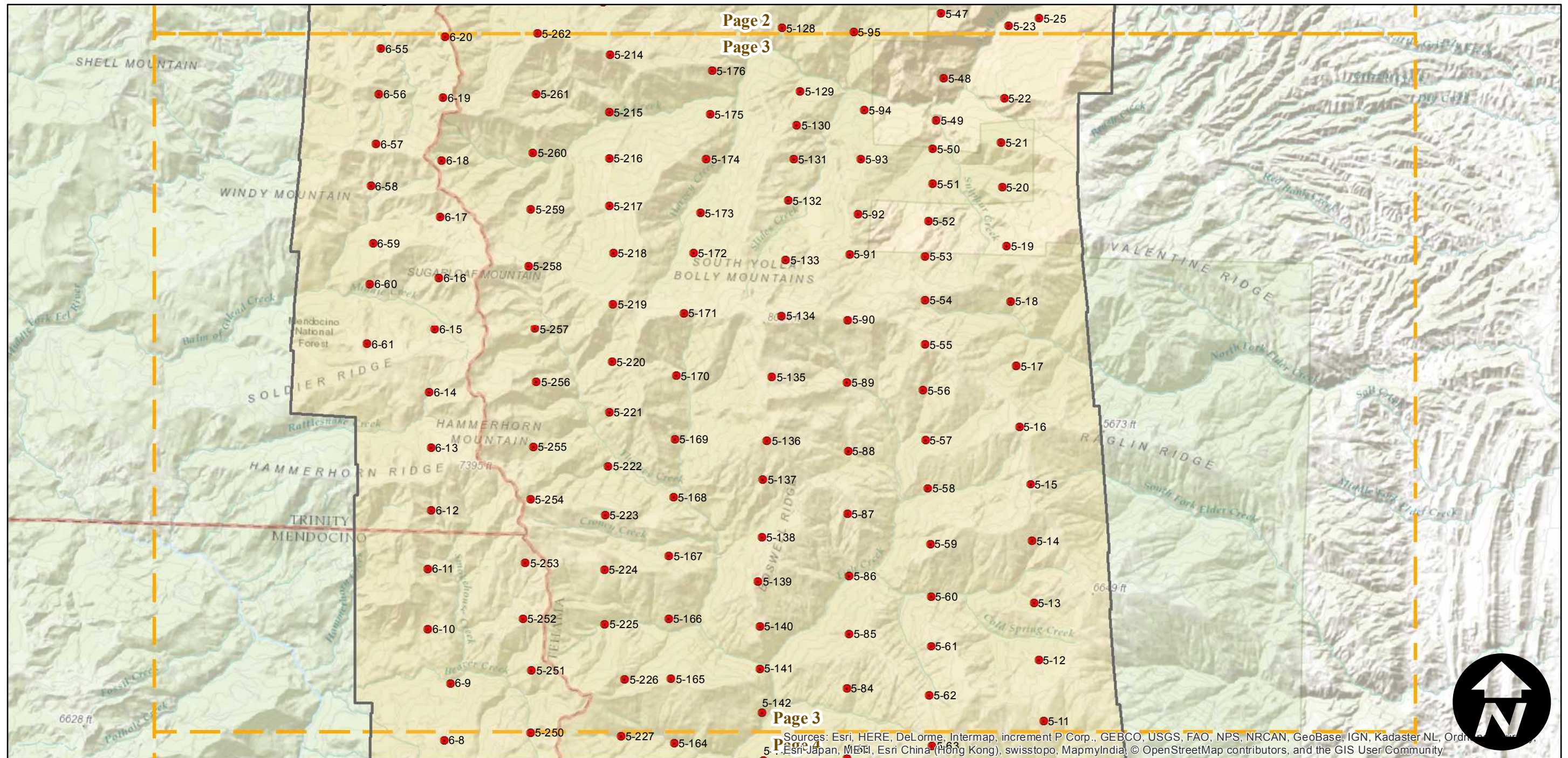
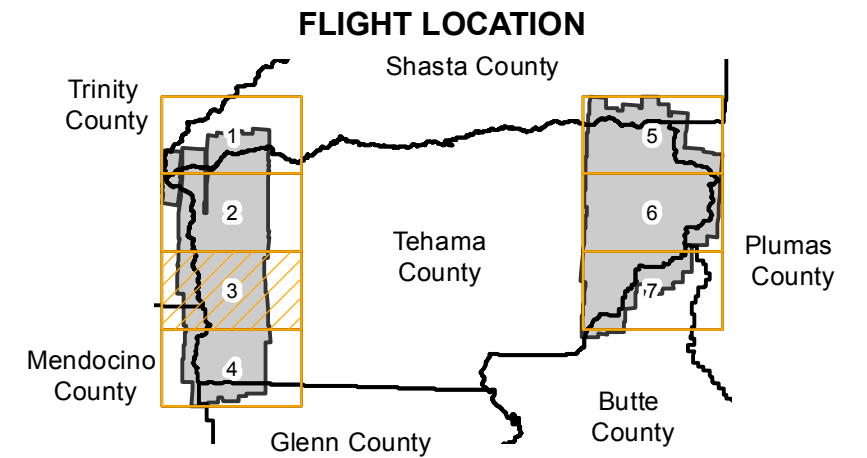
CAS-TEH (1:15K)

Counties: Tehama, Shasta, Butte, Glenn, Mendocino, Trinity
 Flight date(s): 07-21-1962 to 10-15-1962
 Scale: 1:15,840
 Overlap: 60%

Complete Metadata:
<http://www.library.ucsb.edu/map-imagery-lab/aerial-photography-information>

Note: Central 1/2 of county at 1:20,000. Eastern 1/4 and Western 1/4 at 1:15,840. Incomplete holdings, see index sheets for more information. Additional index scale is 1:50,000.

- MIL owns frame
- MIL does not own frame



Sources: Esri, HERE, DeLorme, Intermap, increment P Corp., GEBCO, USGS, FAO, NPS, NRCAN, GeoBase, IGN, Kadaster NL, Ordnance Survey, Esri Japan, MEI, Esri China (Hong Kong), swisstopo, MapmyIndia, © OpenStreetMap contributors, and the GIS User Community

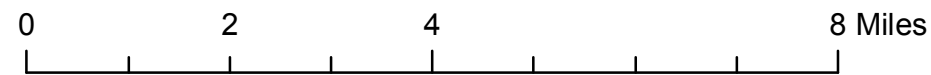
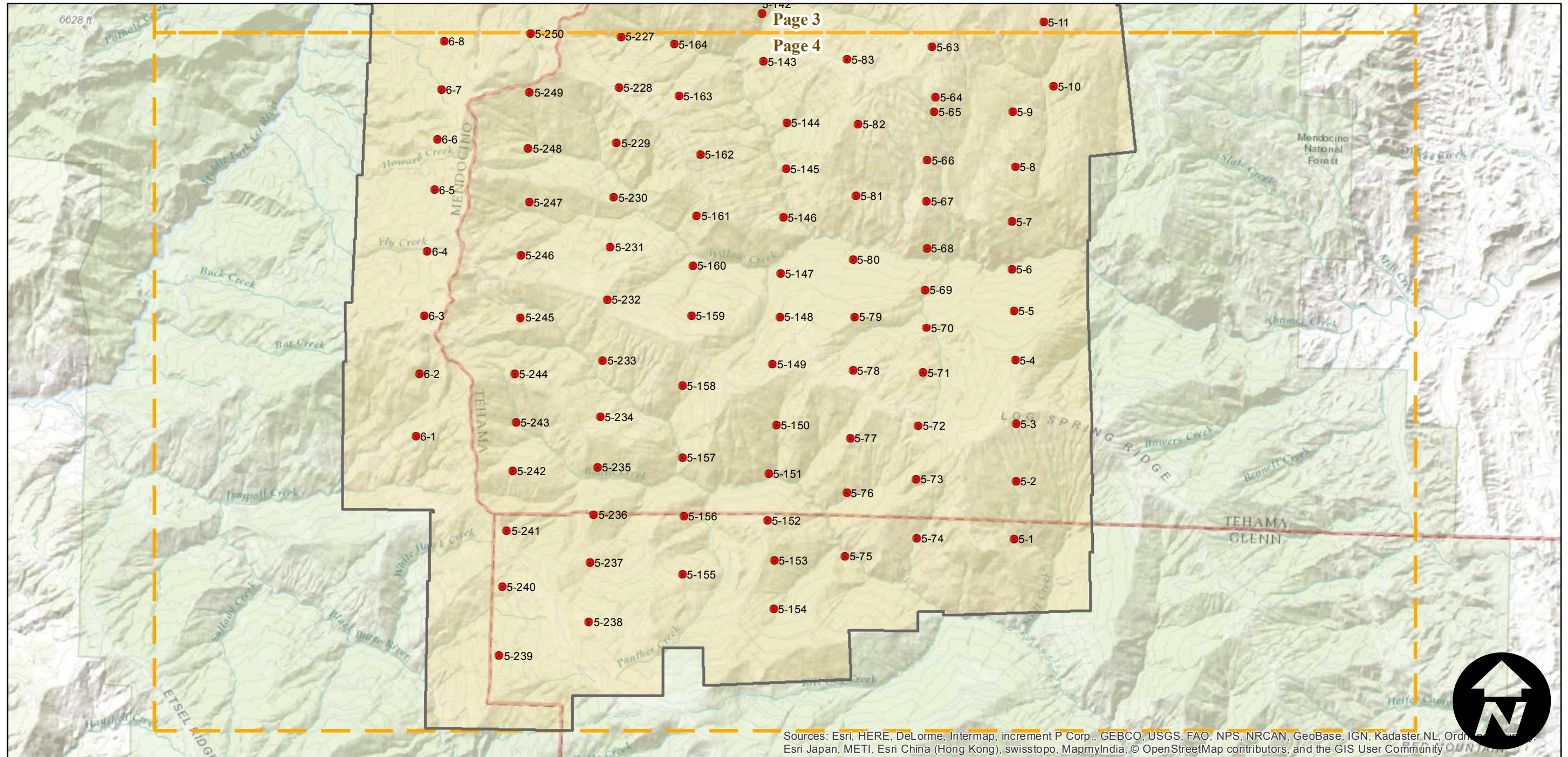
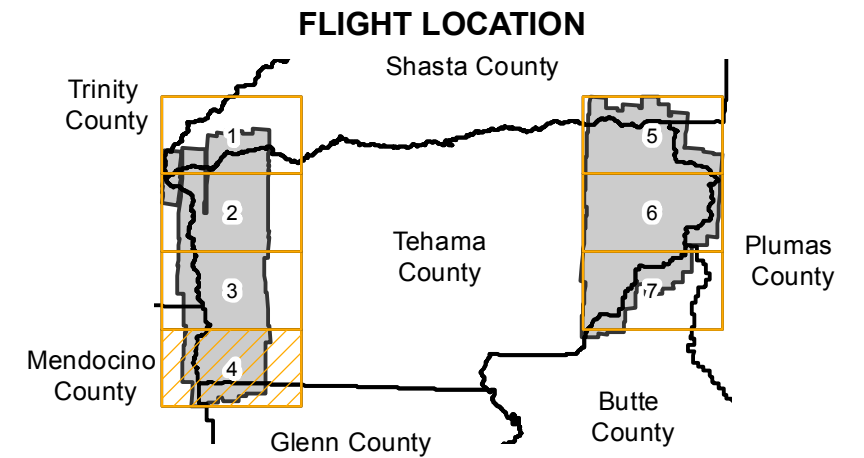
CAS-TEH (1:15K)

Counties: Tehama, Shasta, Butte, Glenn, Mendocino, Trinity
Flight date(s): 07-21-1962 to 10-15-1962
Scale: 1:15,840
Overlap: 60%

Complete Metadata:
<http://www.library.ucsb.edu/map-imagery-lab/aerial-photography-information>

Note: Central 1/2 of county at 1:20,000. Eastern 1/4 and Western 1/4 at 1:15,840. Incomplete holdings, see index sheets for more information. Additional index scale is 1:50,000.

- MIL owns frame
- MIL does not own frame



Index to Aerial Photography
Page 4 of 7

Scale of this index: 1:120,000



Sources: Esri, HERE, DeLorme, Intermap, increment P Corp., GEBCO, USGS, FAO, NPS, NRCAN, GeoBase, IGN, Kadaster NL, Ordnance Survey, Esri Japan, METI, Esri China (Hong Kong), swisstopo, MapmyIndia, © OpenStreetMap contributors, and the GIS User Community

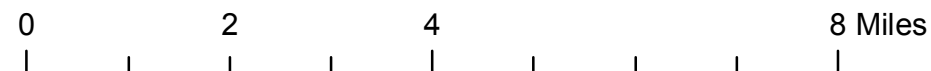
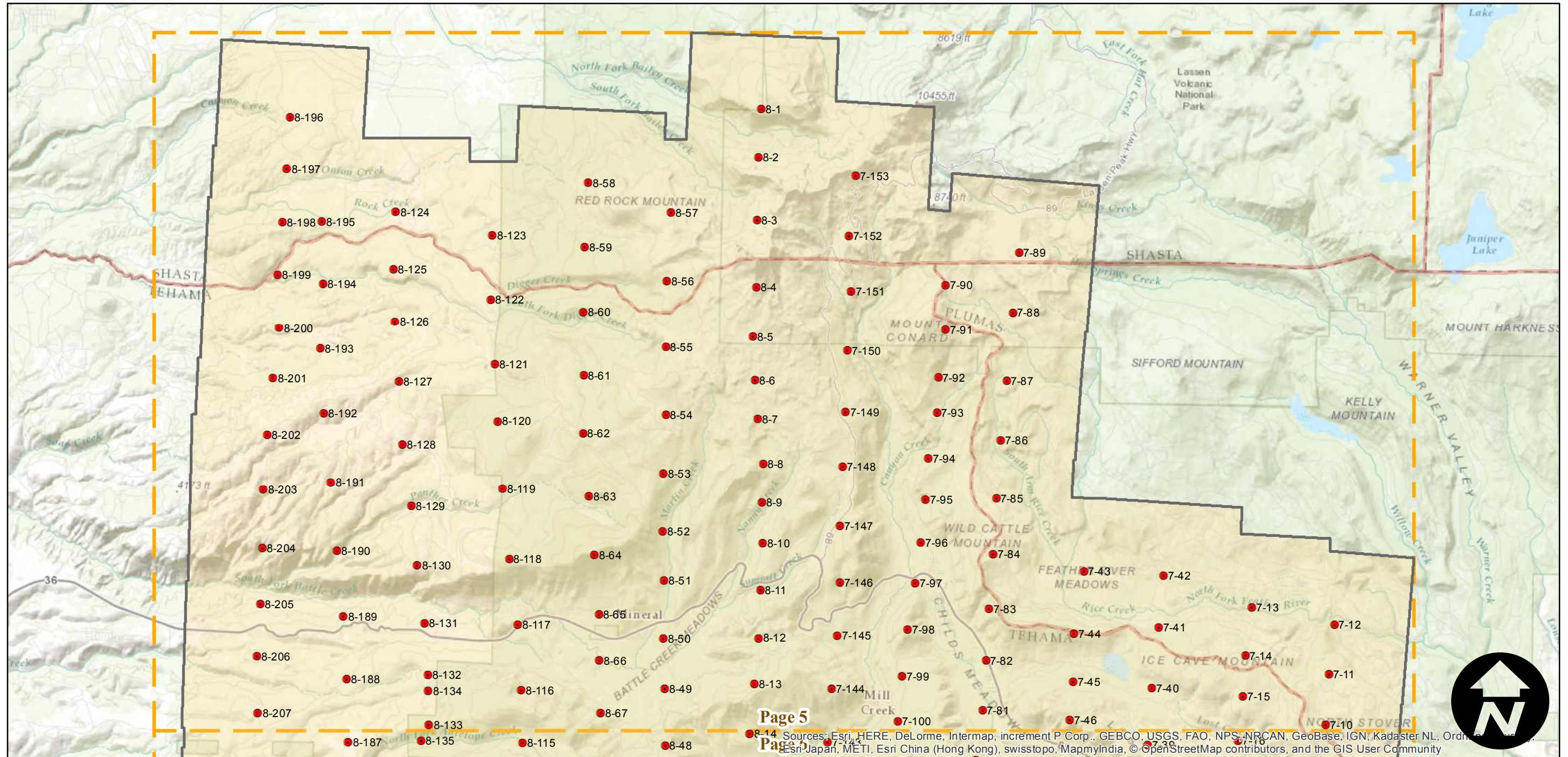
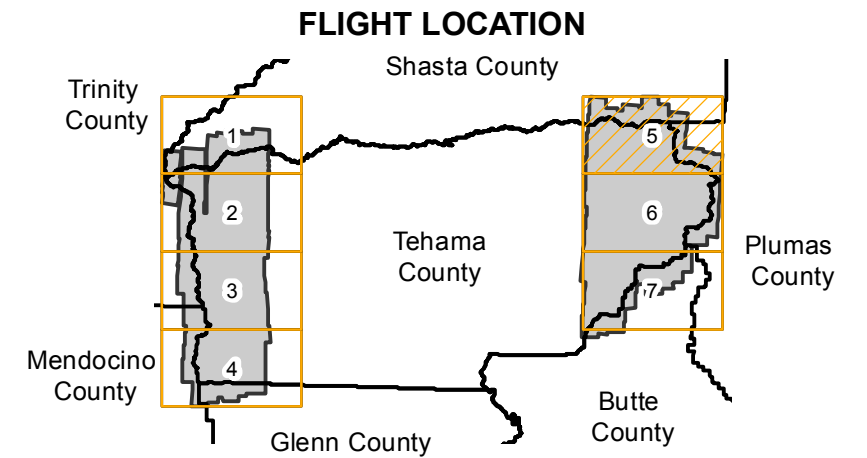
CAS-TEH (1:15K)

Counties: Tehama, Shasta, Butte, Glenn, Mendocino, Trinity
 Flight date(s): 07-21-1962 to 10-15-1962
 Scale: 1:15,840
 Overlap: 60%

Complete Metadata:
<http://www.library.ucsb.edu/map-imagery-lab/aerial-photography-information>

Note: Central 1/2 of county at 1:20,000. Eastern 1/4 and Western 1/4 at 1:15,840. Incomplete holdings, see index sheets for more information. Additional index scale is 1:50,000.

- MIL owns frame
- MIL does not own frame



Page 5
 Sources: Esri, HERE, DeLorme, Intermap, increment P Corp., GEBCO, USGS, FAO, NPS, NRCAN, GeoBase, IGN, Kadaster NL, Ordnance Survey, Esri Japan, METI, Esri China (Hong Kong), swisstopo, MapmyIndia, © OpenStreetMap contributors, and the GIS User Community

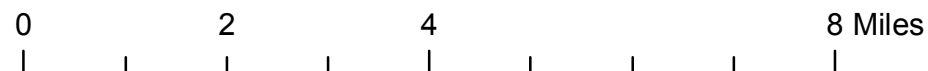
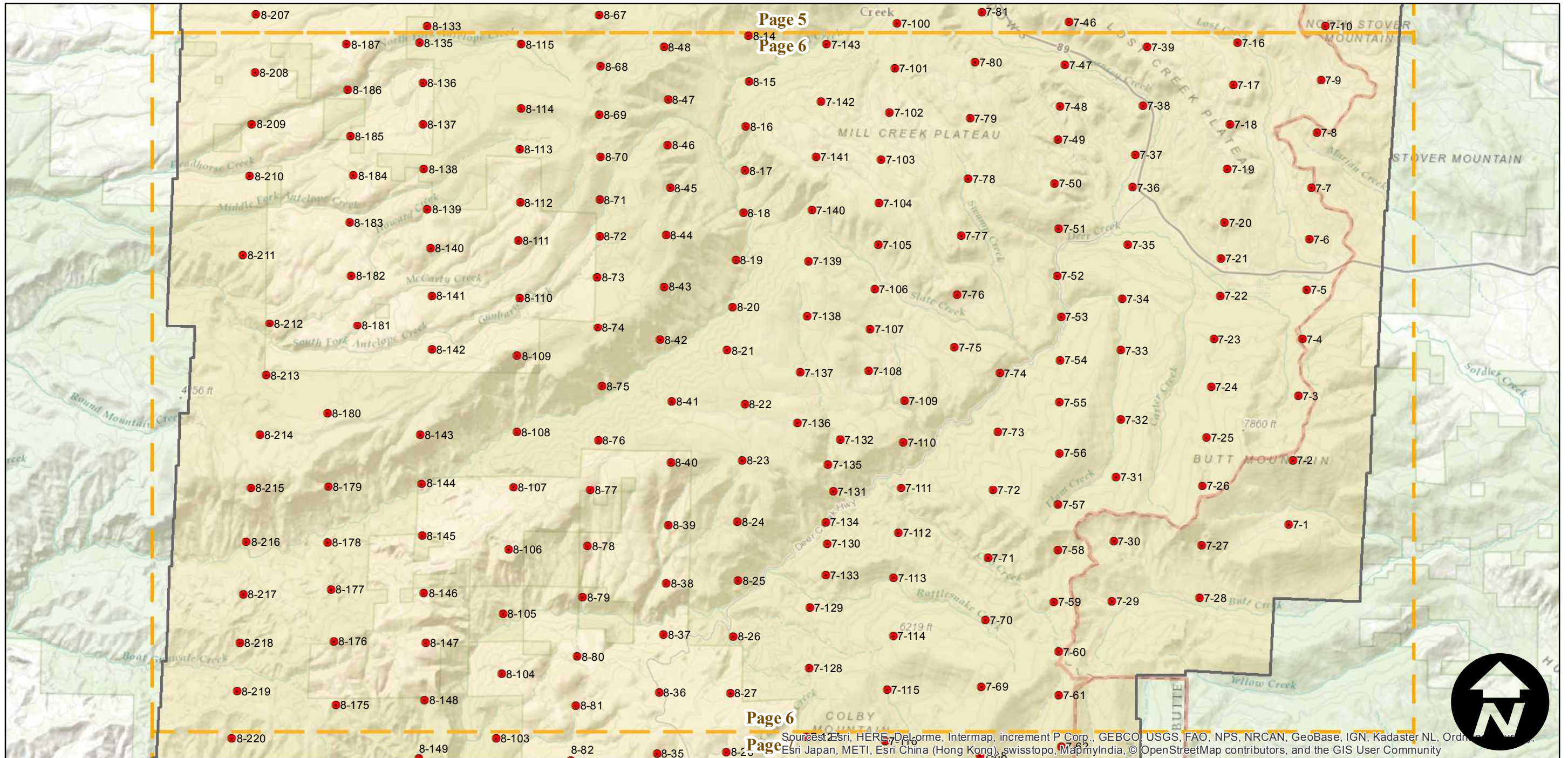
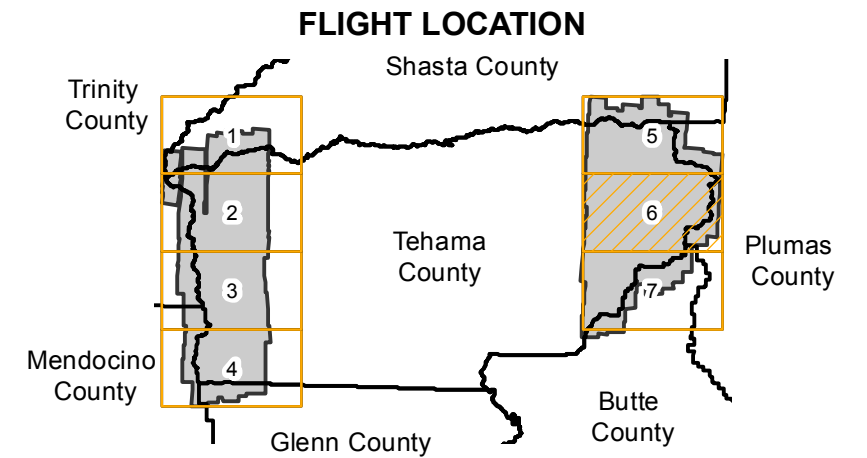
CAS-TEH (1:15K)

Counties: Tehama, Shasta, Butte, Glenn, Mendocino, Trinity
 Flight date(s): 07-21-1962 to 10-15-1962
 Scale: 1:15,840
 Overlap: 60%

Complete Metadata:
<http://www.library.ucsb.edu/map-imagery-lab/aerial-photography-information>

Note: Central 1/2 of county at 1:20,000. Eastern 1/4 and Western 1/4 at 1:15,840. Incomplete holdings, see index sheets for more information. Additional index scale is 1:50,000.

- MIL owns frame
- MIL does not own frame



Source: Esri, HERE, DeLorme, Intermap, increment P Corp., GEBCO, USGS, FAO, NPS, NRCAN, GeoBase, IGN, Kadaster NL, Ordnance Survey, Esri Japan, METI, Esri China (Hong Kong), swisstopo, MapmyIndia, © OpenStreetMap contributors, and the GIS User Community

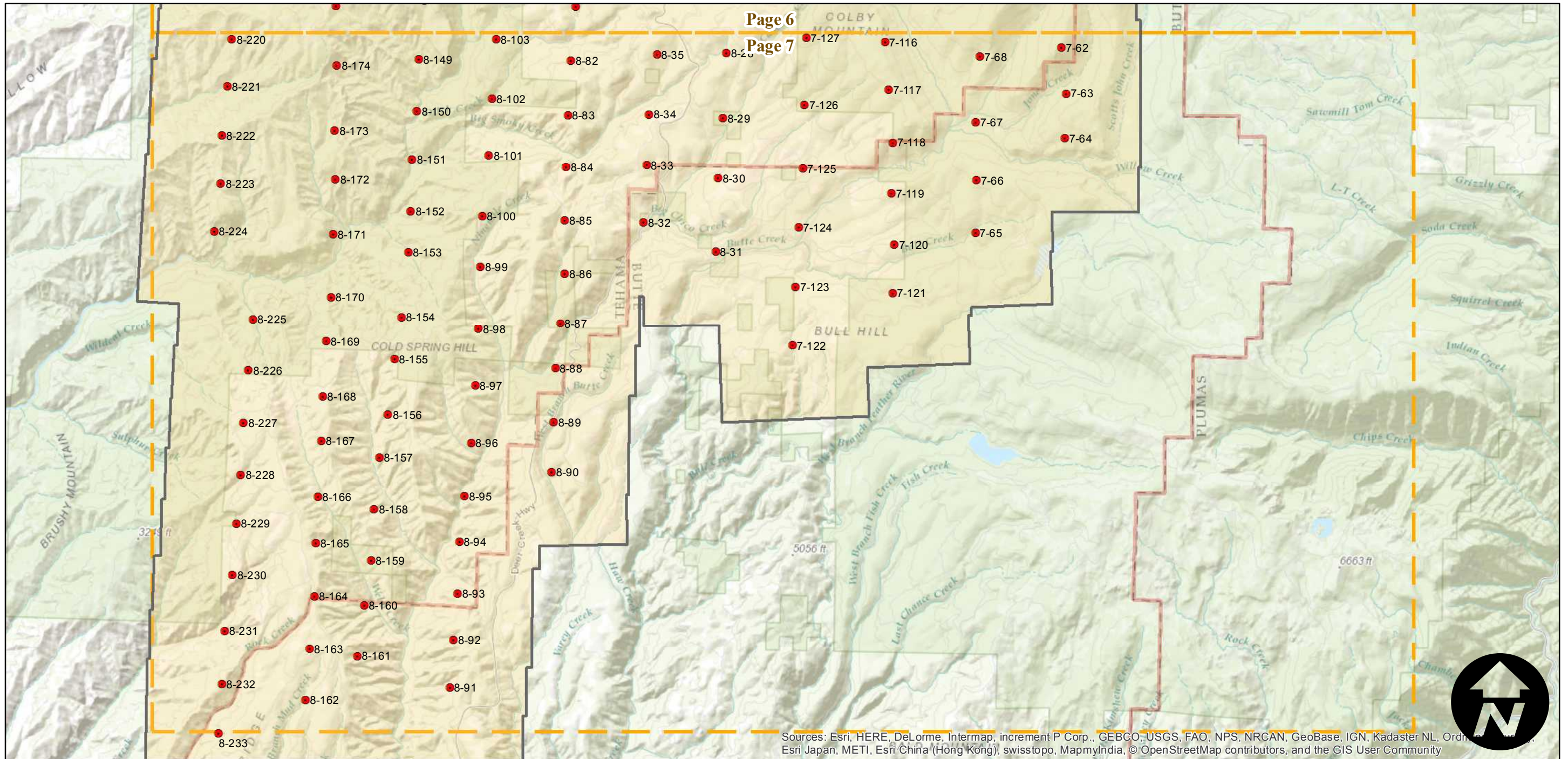
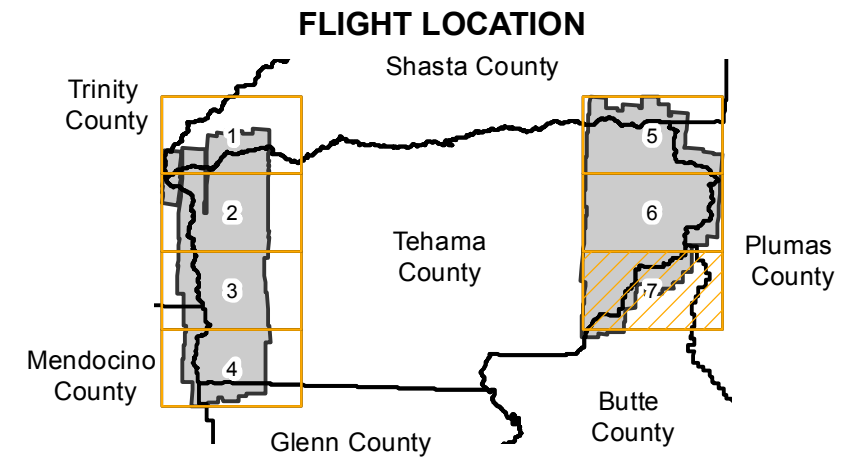
CAS-TEH (1:15K)

Counties: Tehama, Shasta, Butte, Glenn, Mendocino, Trinity
 Flight date(s): 07-21-1962 to 10-15-1962
 Scale: 1:15,840
 Overlap: 60%

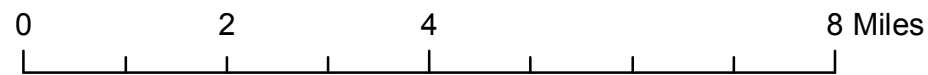
Complete Metadata:
<http://www.library.ucsb.edu/map-imagery-lab/aerial-photography-information>

Note: Central 1/2 of county at 1:20,000. Eastern 1/4 and Western 1/4 at 1:15,840. Incomplete holdings, see index sheets for more information. Additional index scale is 1:50,000.

- MIL owns frame
- MIL does not own frame



Sources: Esri, HERE, DeLorme, Intermap, increment P Corp., GEBCO, USGS, FAO, NPS, NRCAN, GeoBase, IGN, Kadaster NL, Ordnance Survey, Esri Japan, METI, Esri China (Hong Kong), swisstopo, MapmyIndia, © OpenStreetMap contributors, and the GIS User Community



Index to Aerial Photography
 Page 7 of 7

Scale of this index: 1:120,000

