

CAS-STAN

Counties: Stanislaus, San Joaquin, Calaveras, Tuolumne, Merced, Santa Clara

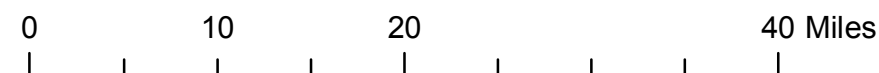
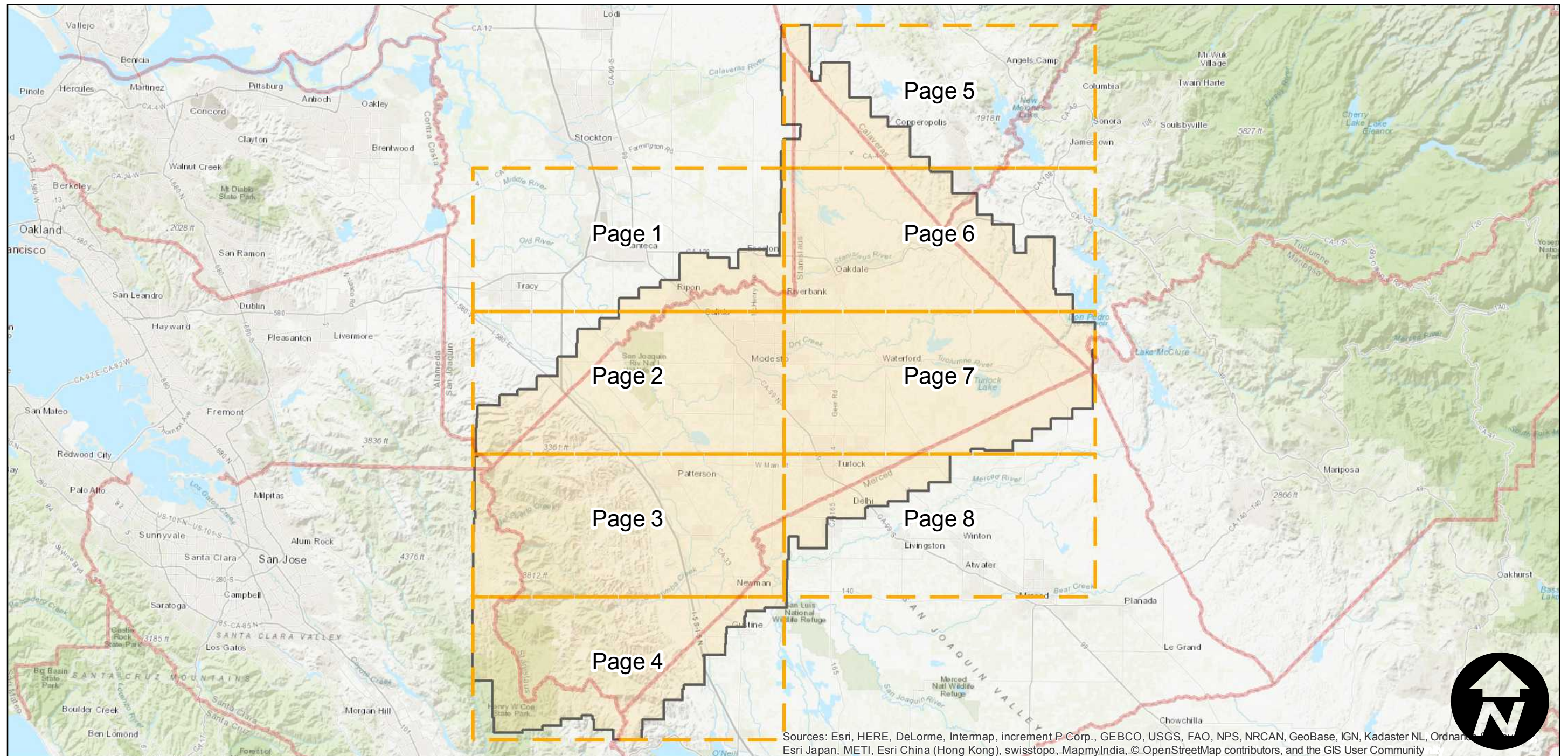
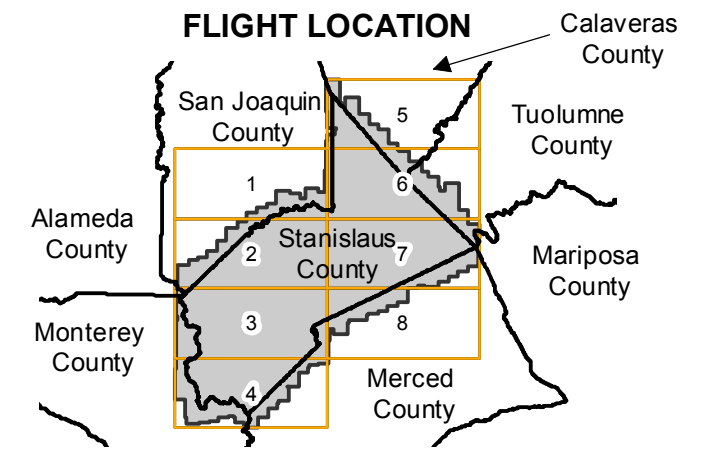
Flight date(s): 06-16-1963 to 01-15-1964

Scale: 1:20,000

Overlap: 60-95%

Complete Metadata:

Note: Complete coverage of Stanislaus county. Imagery acquired in May 1994 and October 2009



Index to Aerial Photography
Page Key

Scale of this index: 1:650,000

CAS-STAN

Counties: Stanislaus, San Joaquin, Calaveras, Tuolumne, Merced, Santa Clara

Flight date(s): 06-16-1963 to 01-15-1964

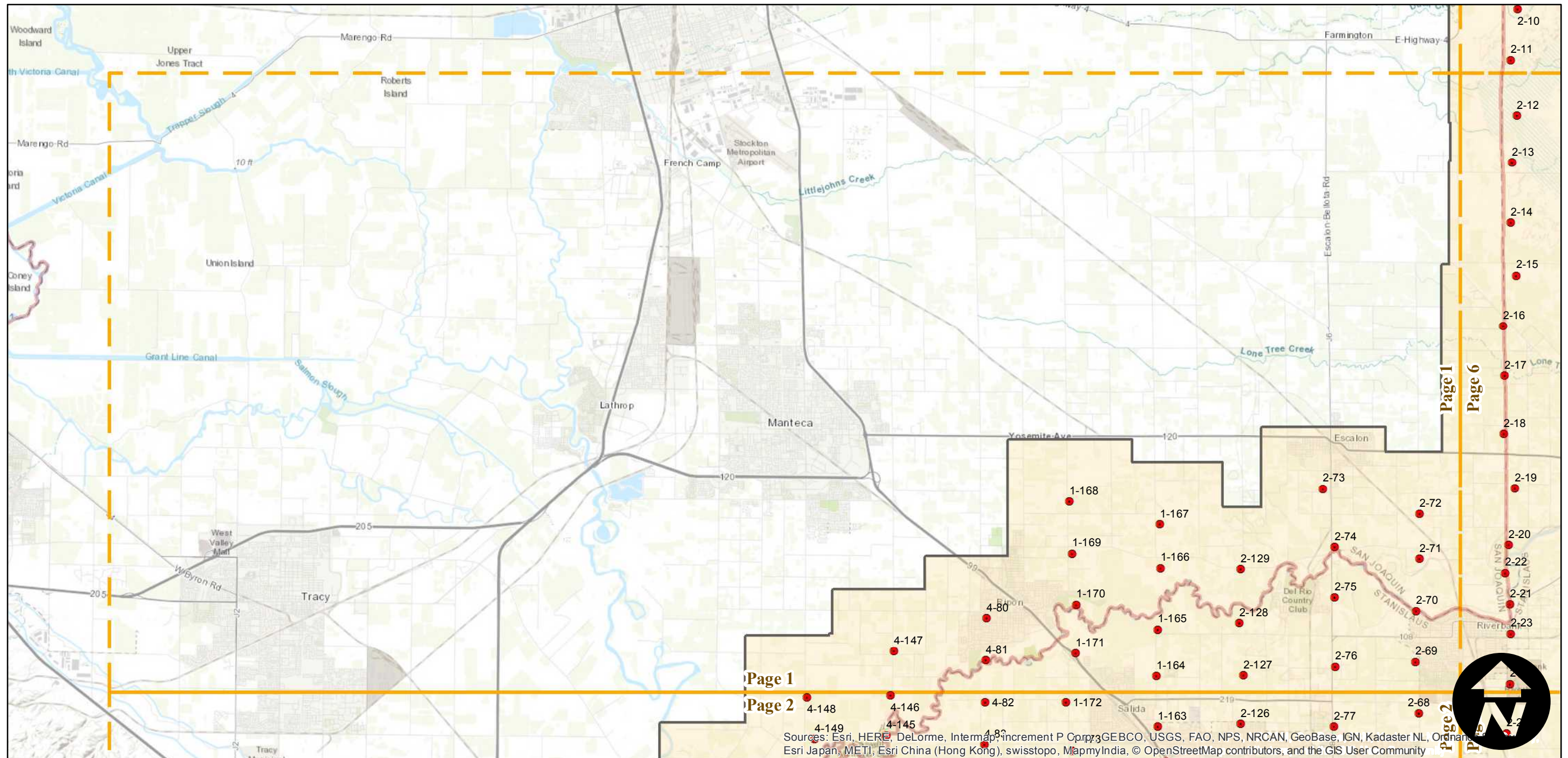
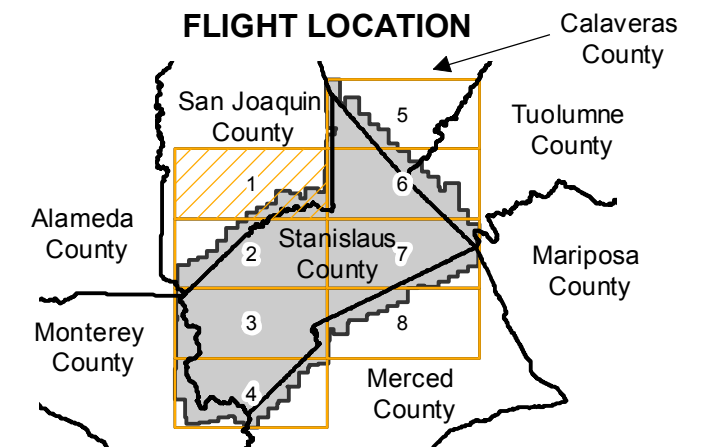
Scale: 1:20,000

Overlap: 60-95%

Complete Metadata:

Note: Complete coverage of Stanislaus county. Imagery acquired in May 1994 and October 2009

- MIL owns frame
- MIL does not own frame



Sources: Esri, HERE, DeLorme, Intermap, increment P Corp., GEBCO, USGS, FAO, NPS, NRCAN, GeoBase, IGN, Kadaster NL, Ordnance Survey, Esri Japan, METI, Esri China (Hong Kong), swisstopo, MapmyIndia, © OpenStreetMap contributors, and the GIS User Community

0 2 4 8 Miles

Index to Aerial Photography
Page 1 of 8

Scale of this index: 1:150,000

CAS-STAN

Counties: Stanislaus, San Joaquin, Calaveras, Tuolumne, Merced, Santa Clara

Flight date(s): 06-16-1963 to 01-15-1964

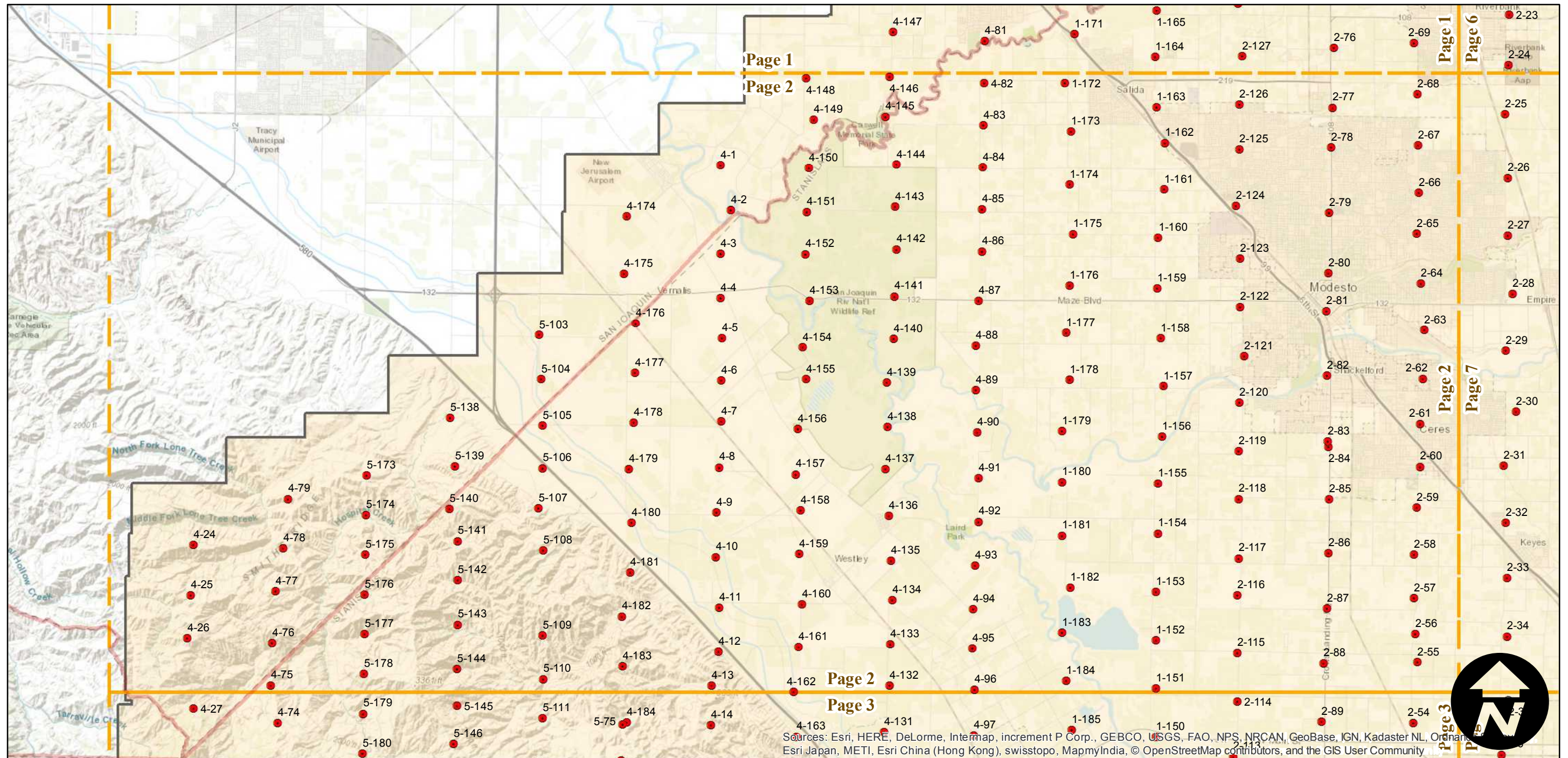
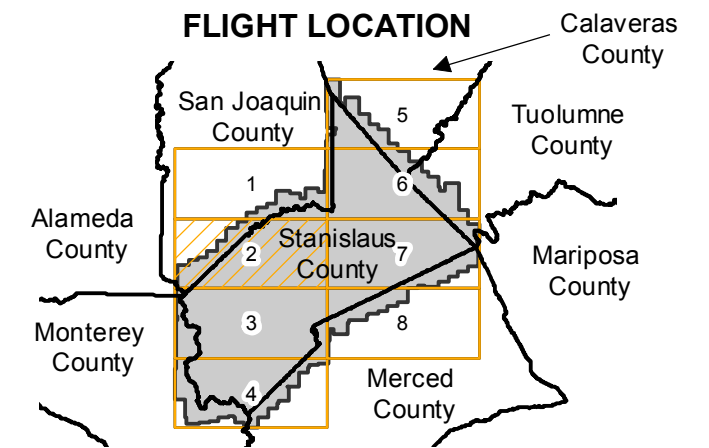
Scale: 1:20,000

Overlap: 60-95%

Complete Metadata:

Note: Complete coverage of Stanislaus county. Imagery acquired in May 1994 and October 2009

- MIL owns frame
- MIL does not own frame



CAS-STAN

Counties: Stanislaus, San Joaquin, Calaveras, Tuolumne, Merced, Santa Clara

Flight date(s): 06-16-1963 to 01-15-1964

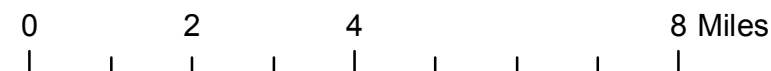
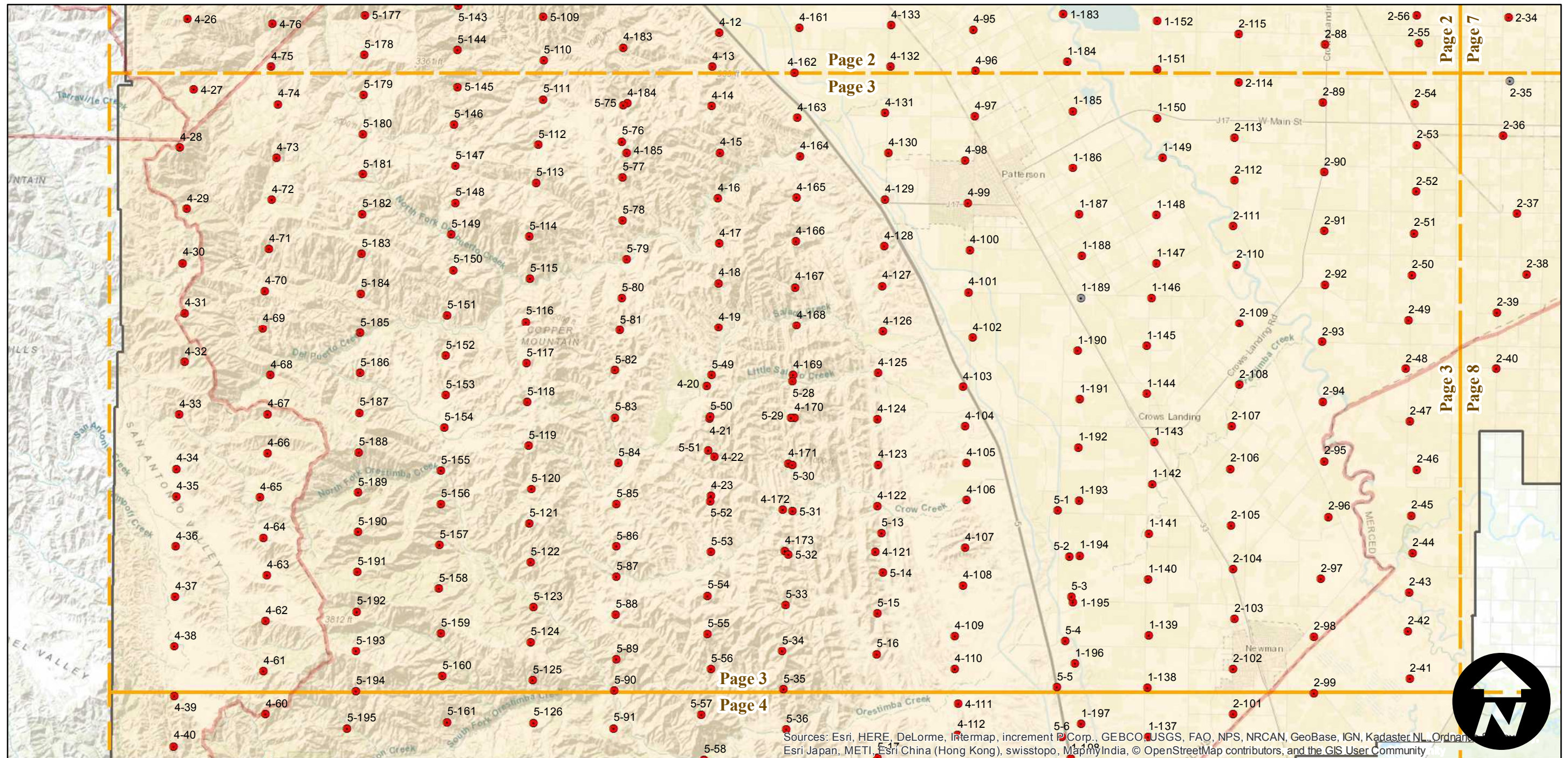
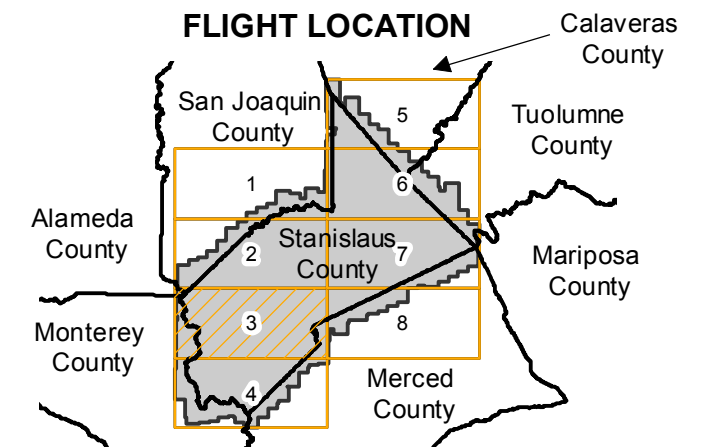
Scale: 1:20,000

Overlap: 60-95%

Complete Metadata:

Note: Complete coverage of Stanislaus county. Imagery acquired in May 1994 and October 2009

- MIL owns frame
- MIL does not own frame



Sources: Esri, HERE, DeLorme, Intermap, increment P Corp., GEBCO, USGS, FAO, NPS, NRCAN, GeoBase, IGN, Kadaster NL, Ordnance Survey, Esri Japan, METI, Esri China (Hong Kong), swisstopo, MapmyIndia, © OpenStreetMap contributors, and the GIS User Community



CAS-STAN

Counties: Stanislaus, San Joaquin, Calaveras, Tuolumne, Merced, Santa Clara

Flight date(s): 06-16-1963 to 01-15-1964

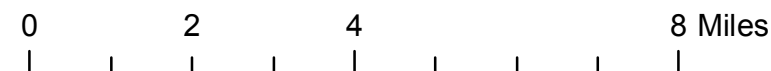
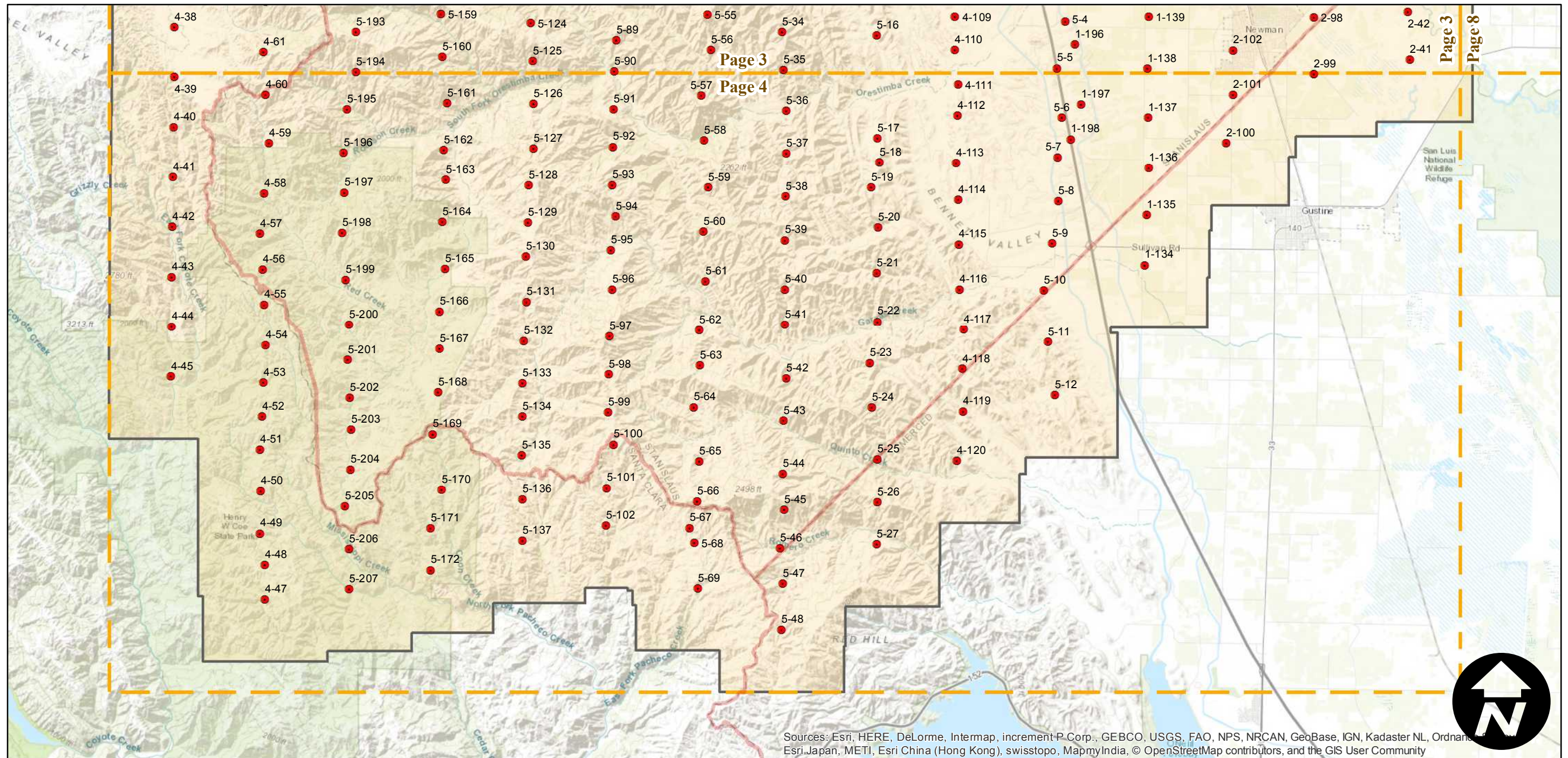
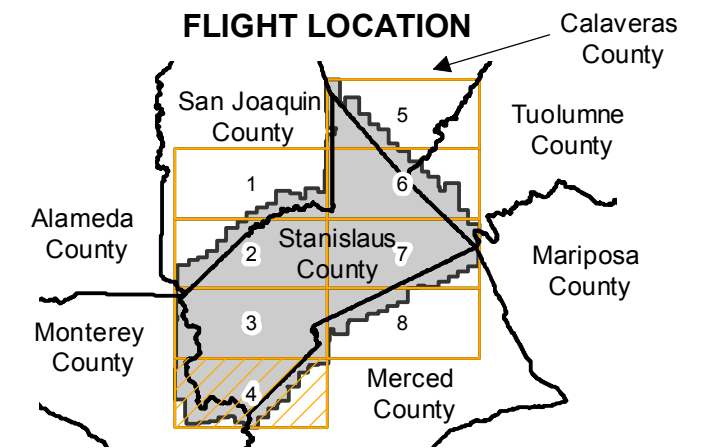
Scale: 1:20,000

Overlap: 60-95%

Complete Metadata:

Note: Complete coverage of Stanislaus county. Imagery acquired in May 1994 and October 2009

- MIL owns frame
- MIL does not own frame



Index to Aerial Photography
Page 4 of 8

Scale of this index: 1:150,000

Sources: Esri, HERE, DeLorme, Intermap, increment P Corp., GEBCO, USGS, FAO, NPS, NRCAN, GeoBase, IGN, Kadaster NL, Ordnance Survey, Esri Japan, METI, Esri China (Hong Kong), swisstopo, MapmyIndia, © OpenStreetMap contributors, and the GIS User Community

CAS-STAN

Counties: Stanislaus, San Joaquin, Calaveras, Tuolumne, Merced, Santa Clara

Flight date(s): 06-16-1963 to 01-15-1964

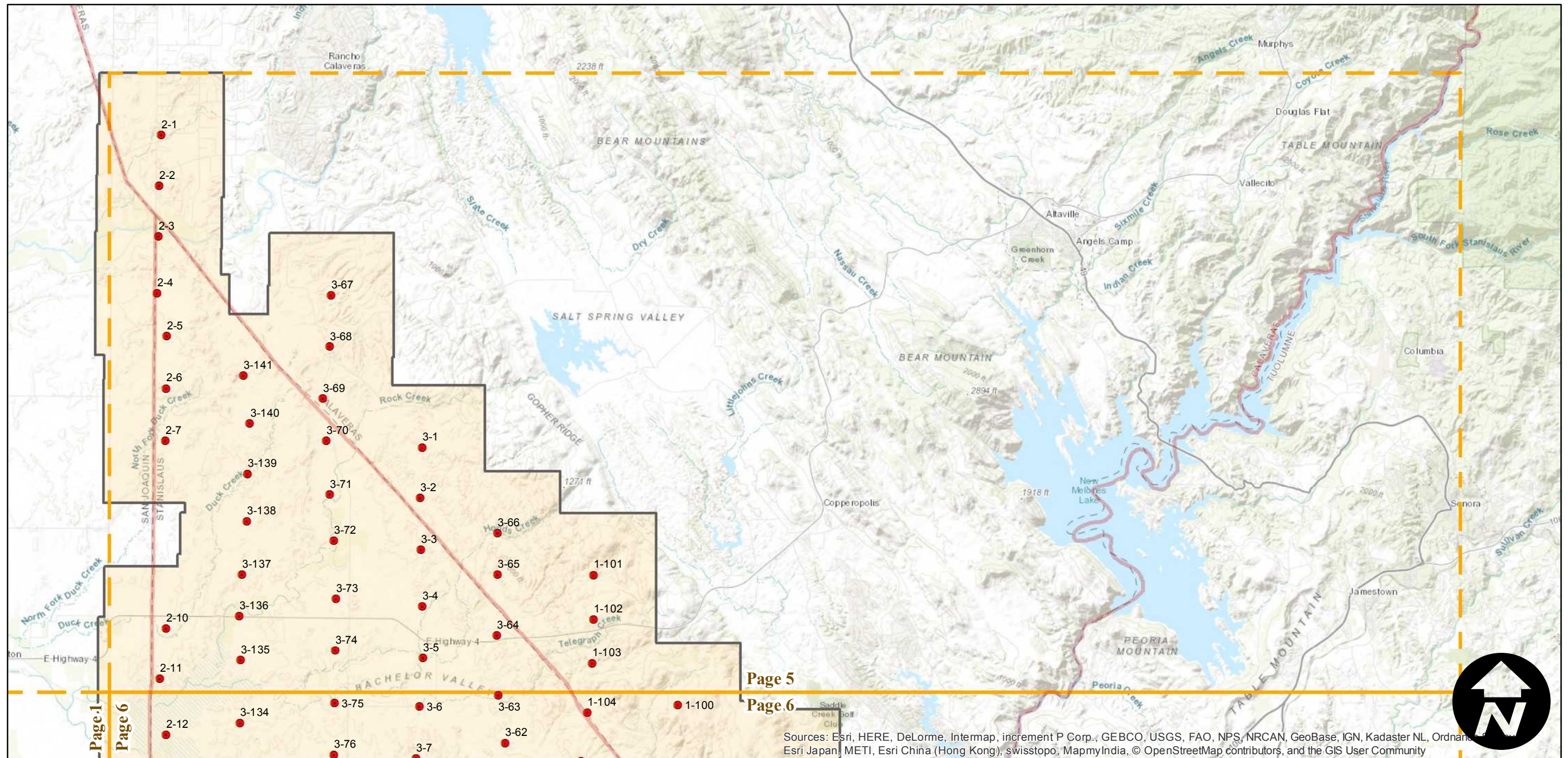
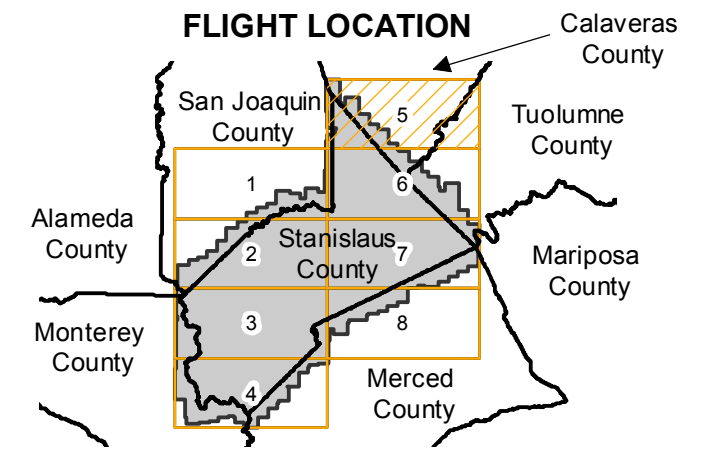
Scale: 1:20,000

Overlap: 60-95%

Complete Metadata:

Note: Complete coverage of Stanislaus county. Imagery acquired in May 1994 and October 2009

- MIL owns frame
- MIL does not own frame



Sources: Esri, HERE, DeLorme, Intermap, increment P Corp., GEBCO, USGS, FAO, NPS, NRCAN, GeoBase, IGN, Kadaster NL, Ordnance Survey, Esri Japan, METI, Esri China (Hong Kong), swisstopo, MapmyIndia, © OpenStreetMap contributors, and the GIS User Community

0 2 4 8 Miles

Index to Aerial Photography
Page 5 of 8

Scale of this index: 1:150,000

CAS-STAN

Counties: Stanislaus, San Joaquin, Calaveras, Tuolumne, Merced, Santa Clara

Flight date(s): 06-16-1963 to 01-15-1964

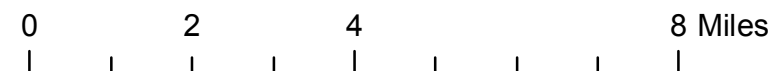
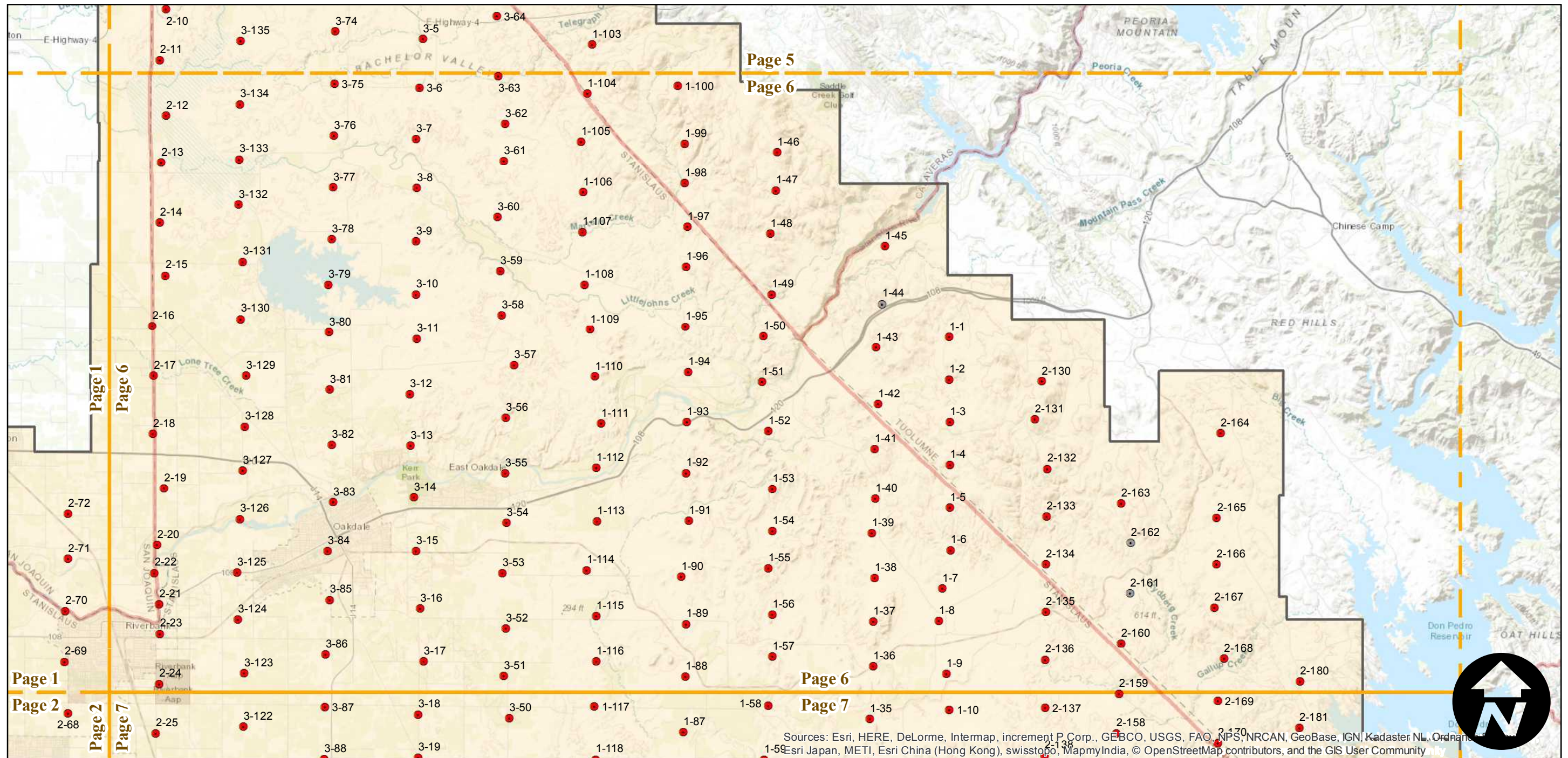
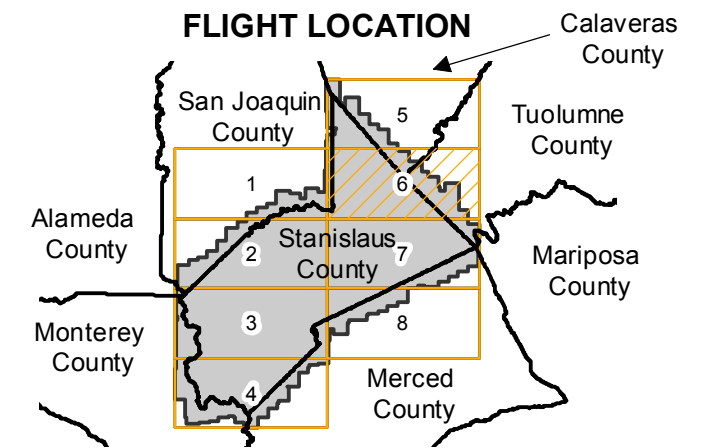
Scale: 1:20,000

Overlap: 60-95%

Complete Metadata:

Note: Complete coverage of Stanislaus county. Imagery acquired in May 1994 and October 2009

- MIL owns frame
- MIL does not own frame



Sources: Esri, HERE, DeLorme, Intermap, increment P Corp., GEBCO, USGS, FAO, NPS, NRCAN, GeoBase, IGN, Kadaster NL, Ordnance Survey, Esri Japan, METI, Esri China (Hong Kong), swisstopo, MapmyIndia, © OpenStreetMap contributors, and the GIS User Community

CAS-STAN

Counties: Stanislaus, San Joaquin, Calaveras, Tuolumne, Merced, Santa Clara

Flight date(s): 06-16-1963 to 01-15-1964

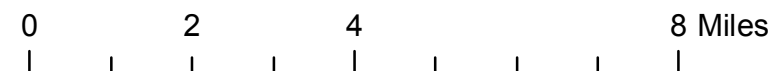
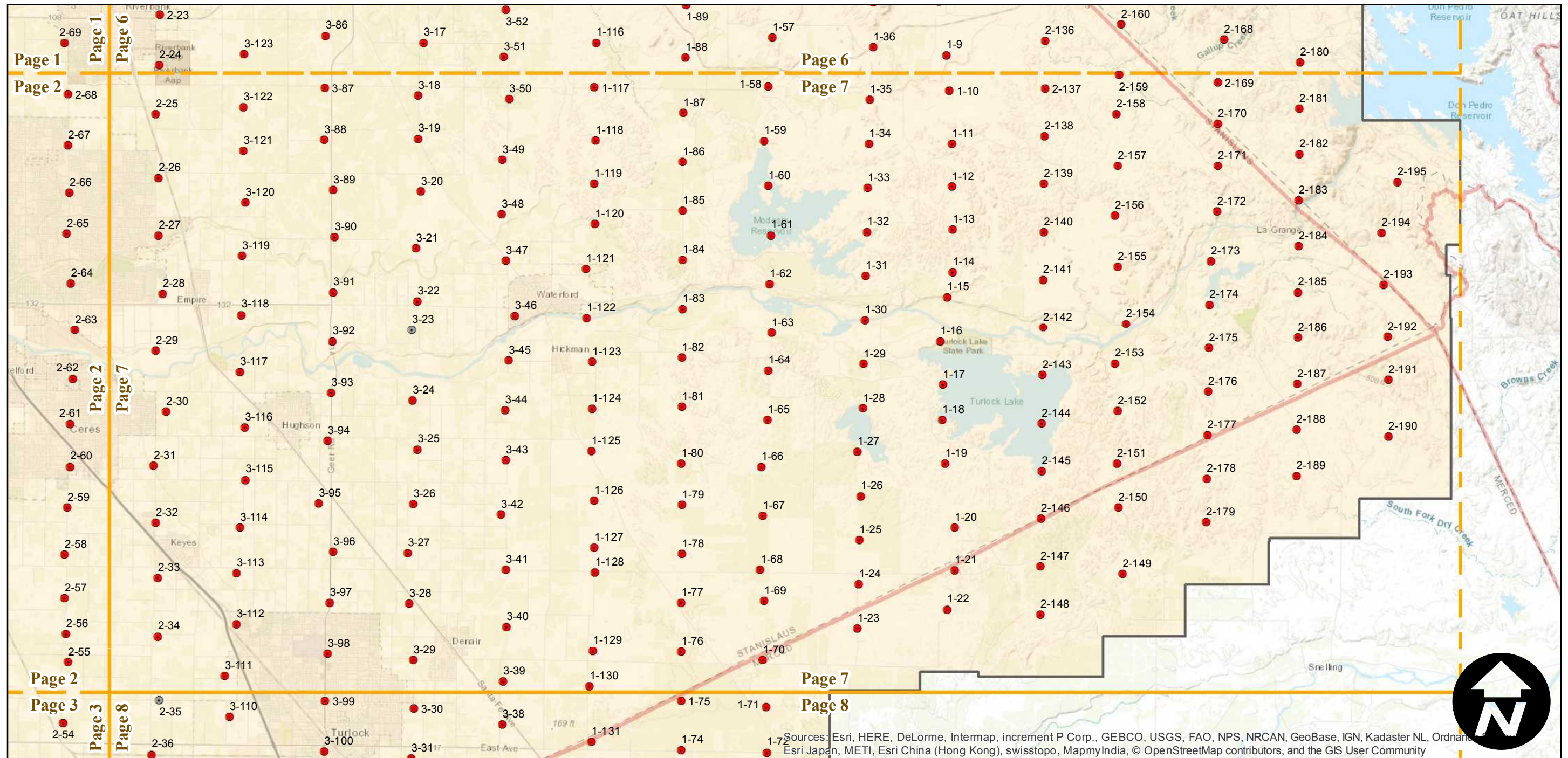
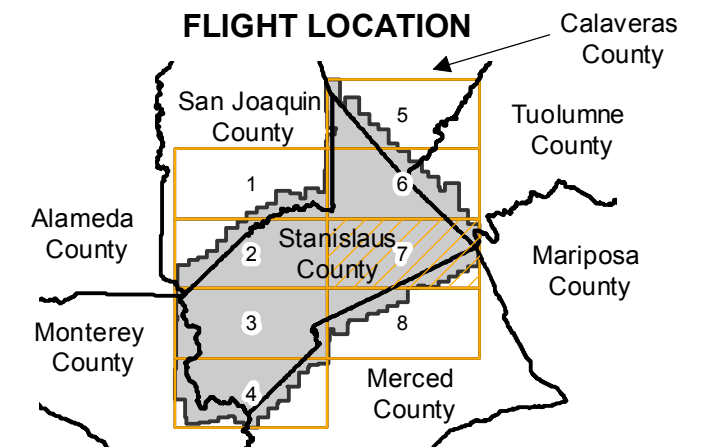
Scale: 1:20,000

Overlap: 60-95%

Complete Metadata:

Note: Complete coverage of Stanislaus county. Imagery acquired in May 1994 and October 2009

- MIL owns frame
- MIL does not own frame



Sources: Esri, HERE, DeLorme, Intermap, increment P Corp., GEBCO, USGS, FAO, NPS, NRCAN, GeoBase, IGN, Kadaster NL, Ordnance Survey, Esri Japan, METI, Esri China (Hong Kong), swisstopo, MapmyIndia, © OpenStreetMap contributors, and the GIS User Community

CAS-STAN

Counties: Stanislaus, San Joaquin, Calaveras, Tuolumne, Merced, Santa Clara

Flight date(s): 06-16-1963 to 01-15-1964

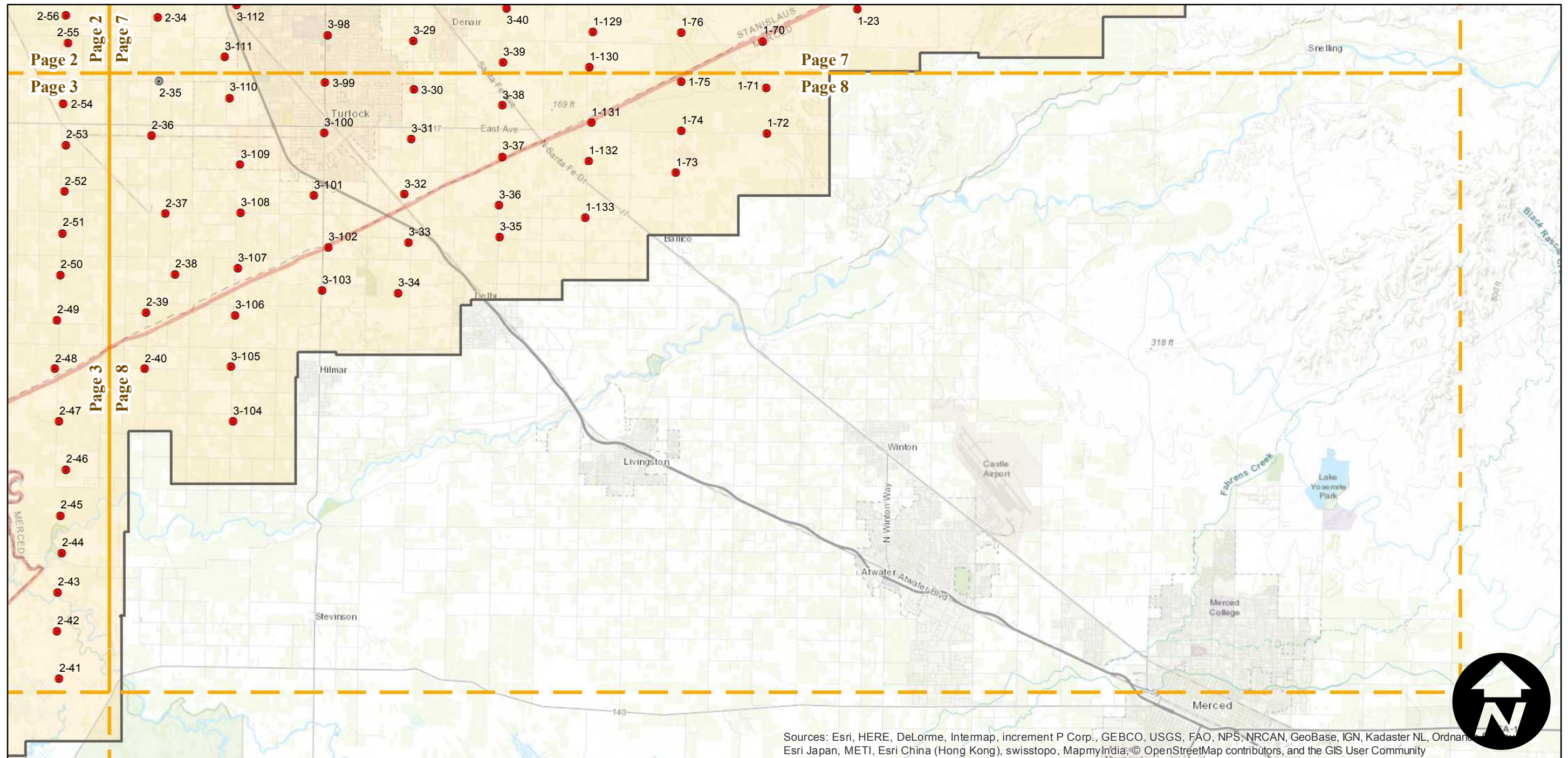
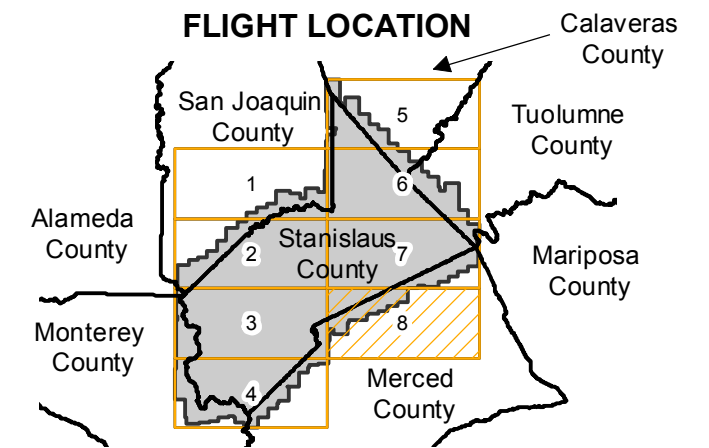
Scale: 1:20,000

Overlap: 60-95%

Complete Metadata:

Note: Complete coverage of Stanislaus county. Imagery acquired in May 1994 and October 2009

- MIL owns frame
- MIL does not own frame



Sources: Esri, HERE, DeLorme, Intermap, increment P Corp., GEBCO, USGS, FAO, NPS, NRCAN, GeoBase, IGN, Kadaster NL, Ordnance Survey, Esri Japan, METI, Esri China (Hong Kong), swisstopo, MapmyIndia, © OpenStreetMap contributors, and the GIS User Community

0 2 4 8 Miles

Index to Aerial Photography
Page 8 of 8

Scale of this index: 1:150,000