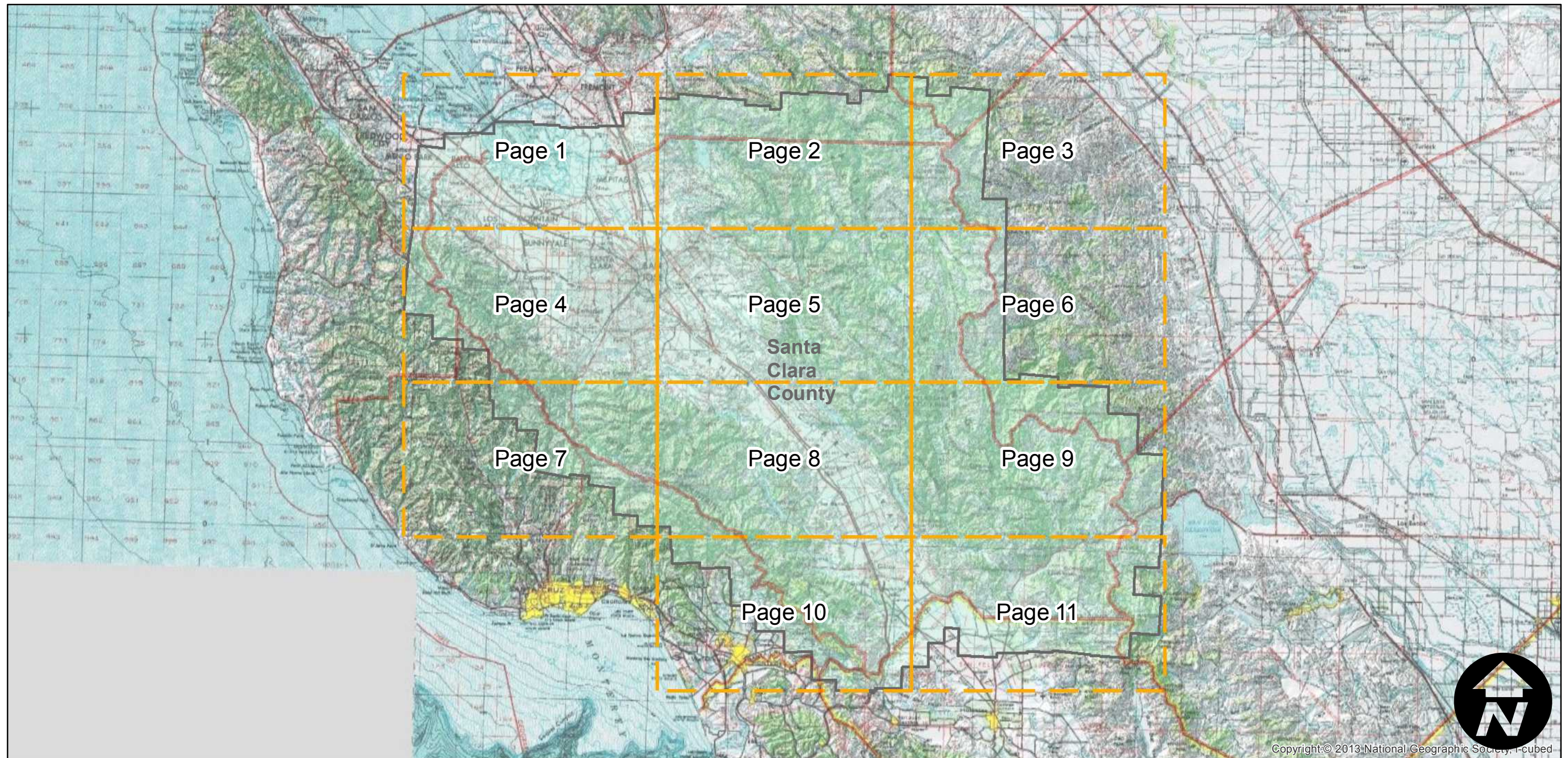
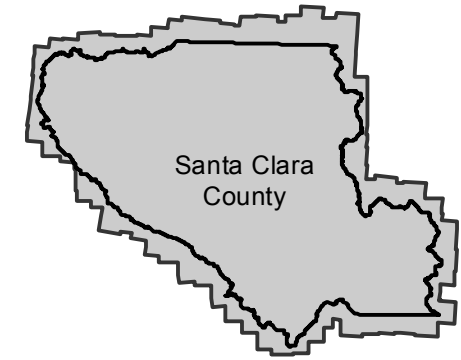


# CAS-SCL

Counties: Santa Clara  
Flight date(s): 01-01-1963 to 12-31-1963  
Scale: 1:20,000  
Overlap: 60%

Complete Metadata:  
<http://www.library.ucsb.edu/mil/aerial-photography-tools>

## FLIGHT LOCATION



0 10 20 40 Miles

Index to Aerial Photography  
Page Key

Scale of this index: 1:500,000



Copyright © 2013 National Geographic Society, i-cubed



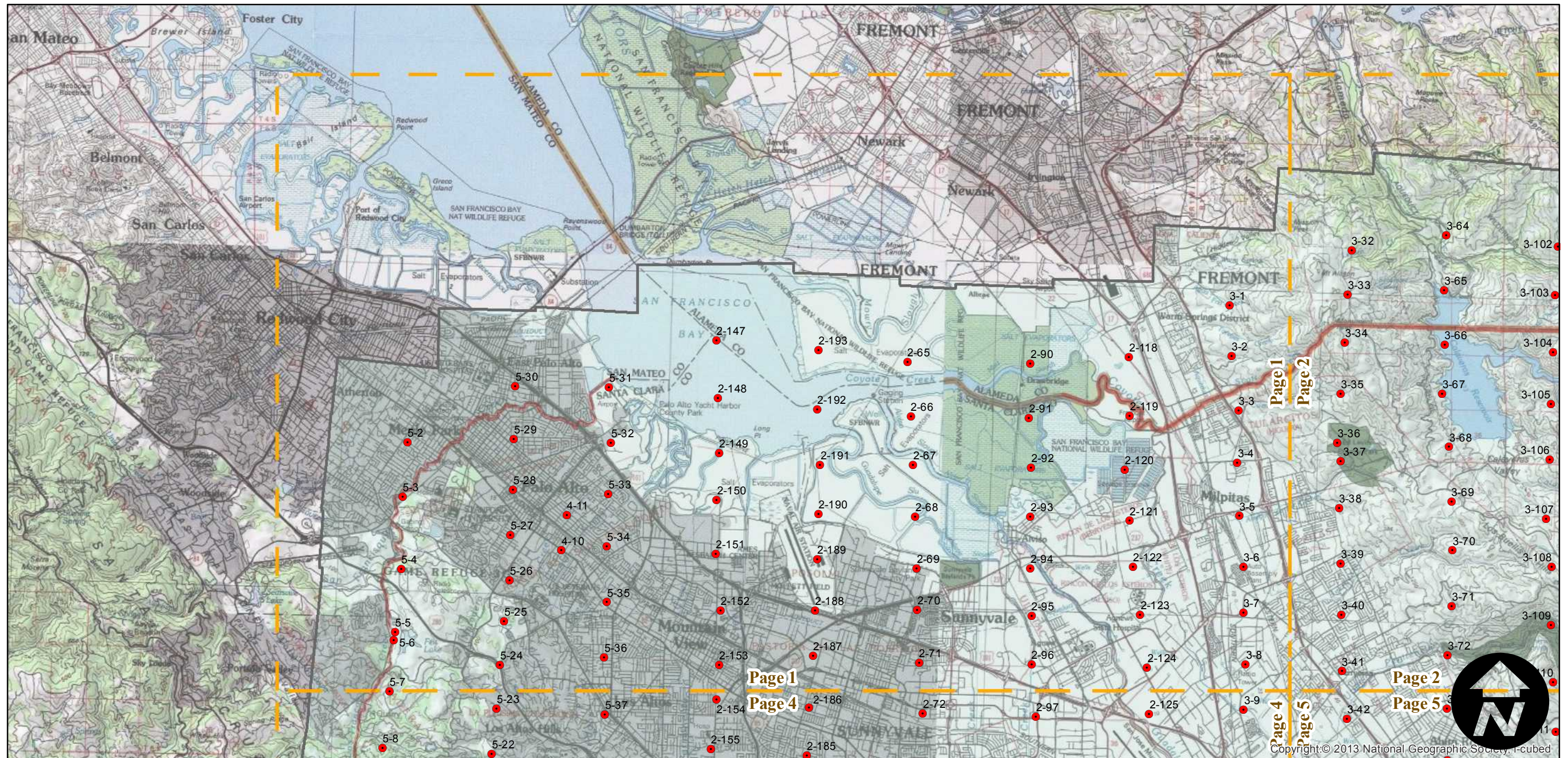
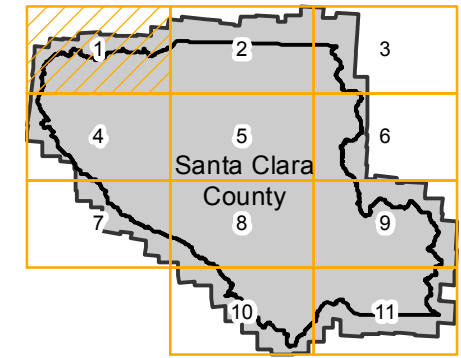
# CAS-SCL

Counties: Santa Clara  
Flight date(s): 01-01-1963 to 12-31-1963  
Scale: 1:20,000  
Overlap: 60%

Complete Metadata:  
<http://www.library.ucsb.edu/mil/aerial-photography-tools>

- MIL owns frame
- MIL does not own frame

## FLIGHT LOCATION





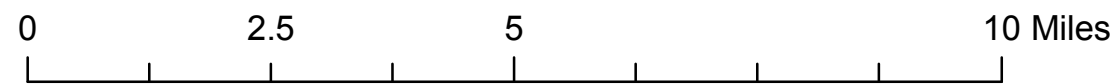
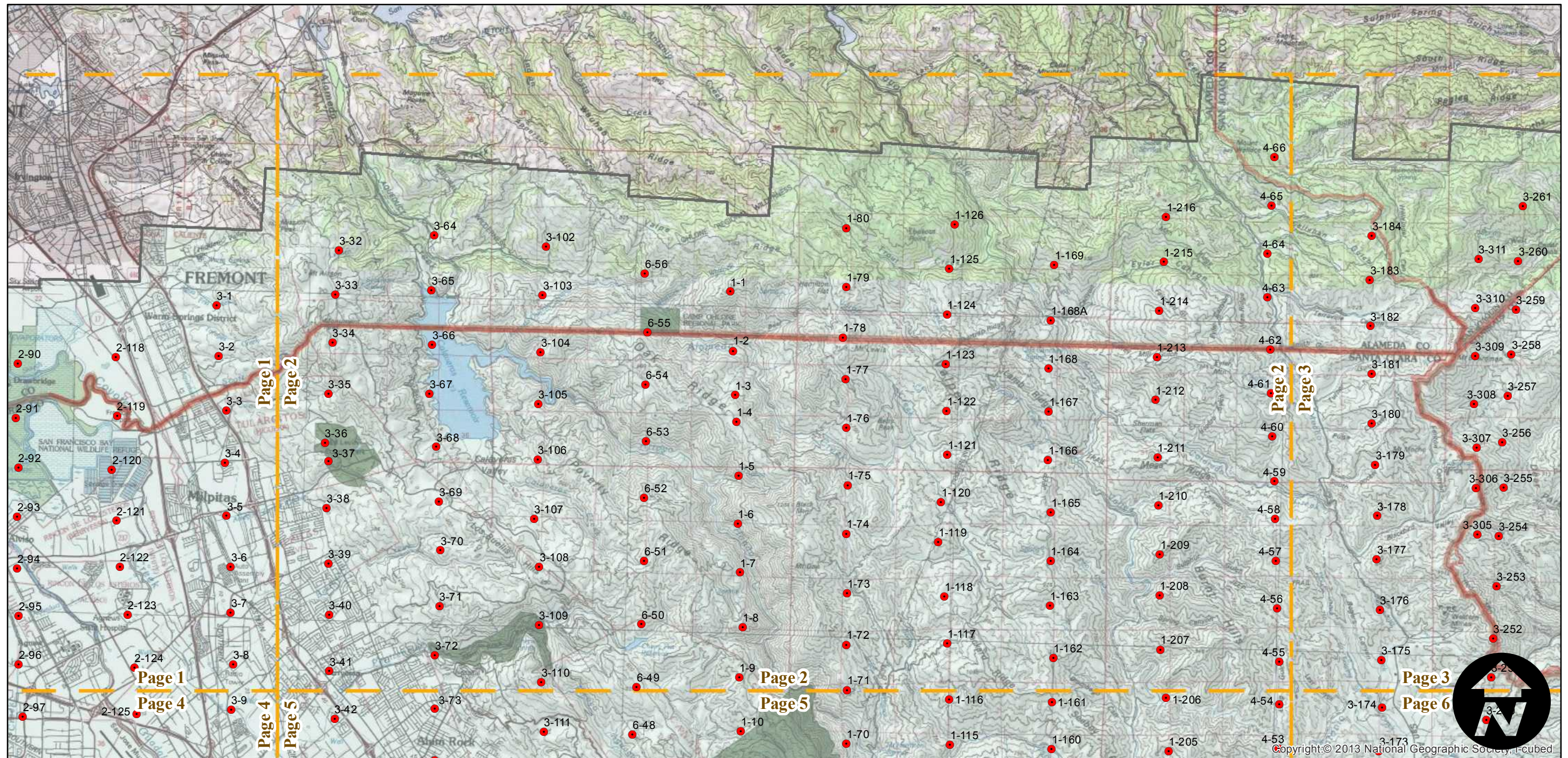
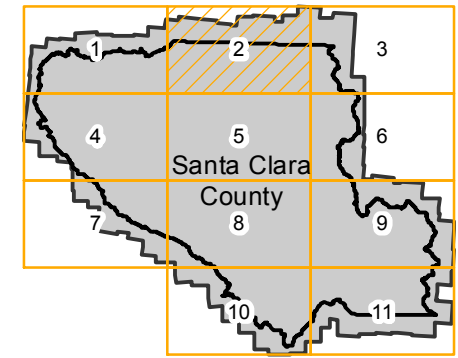
# CAS-SCL

Counties: Santa Clara  
Flight date(s): 01-01-1963 to 12-31-1963  
Scale: 1:20,000  
Overlap: 60%

Complete Metadata:  
<http://www.library.ucsb.edu/mil/aerial-photography-tools>

- MIL owns frame
- MIL does not own frame

## FLIGHT LOCATION





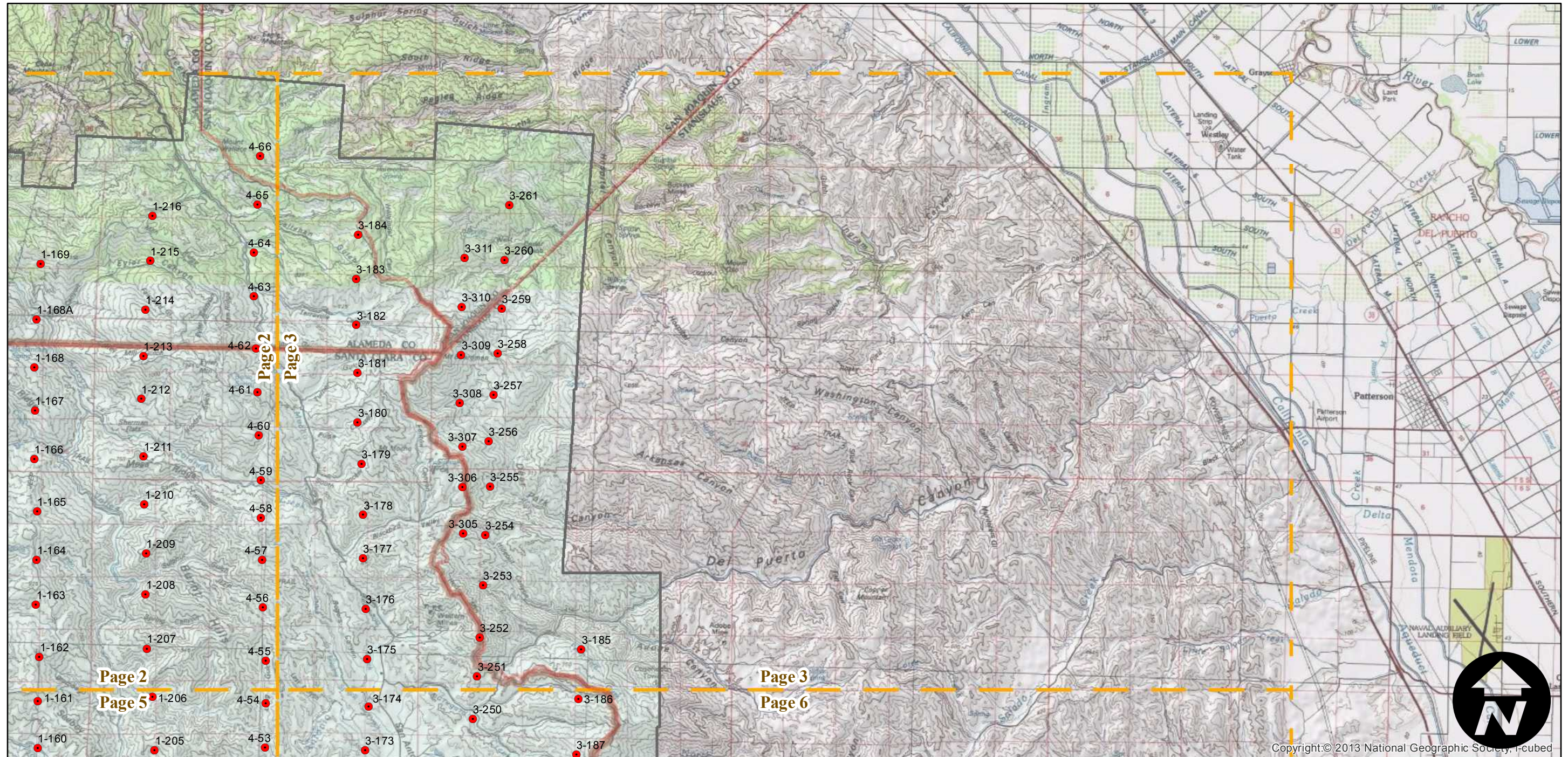
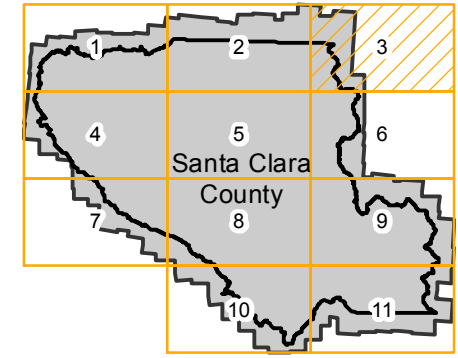
# CAS-SCL

Counties: Santa Clara  
Flight date(s): 01-01-1963 to 12-31-1963  
Scale: 1:20,000  
Overlap: 60%

Complete Metadata:  
<http://www.library.ucsb.edu/mil/aerial-photography-tools>

- MIL owns frame
- MIL does not own frame

## FLIGHT LOCATION



Copyright © 2013 National Geographic Society, I-cubed

0 2.5 5 10 Miles

Index to Aerial Photography  
Page 3 of 11

Scale of this index: 1:125,000



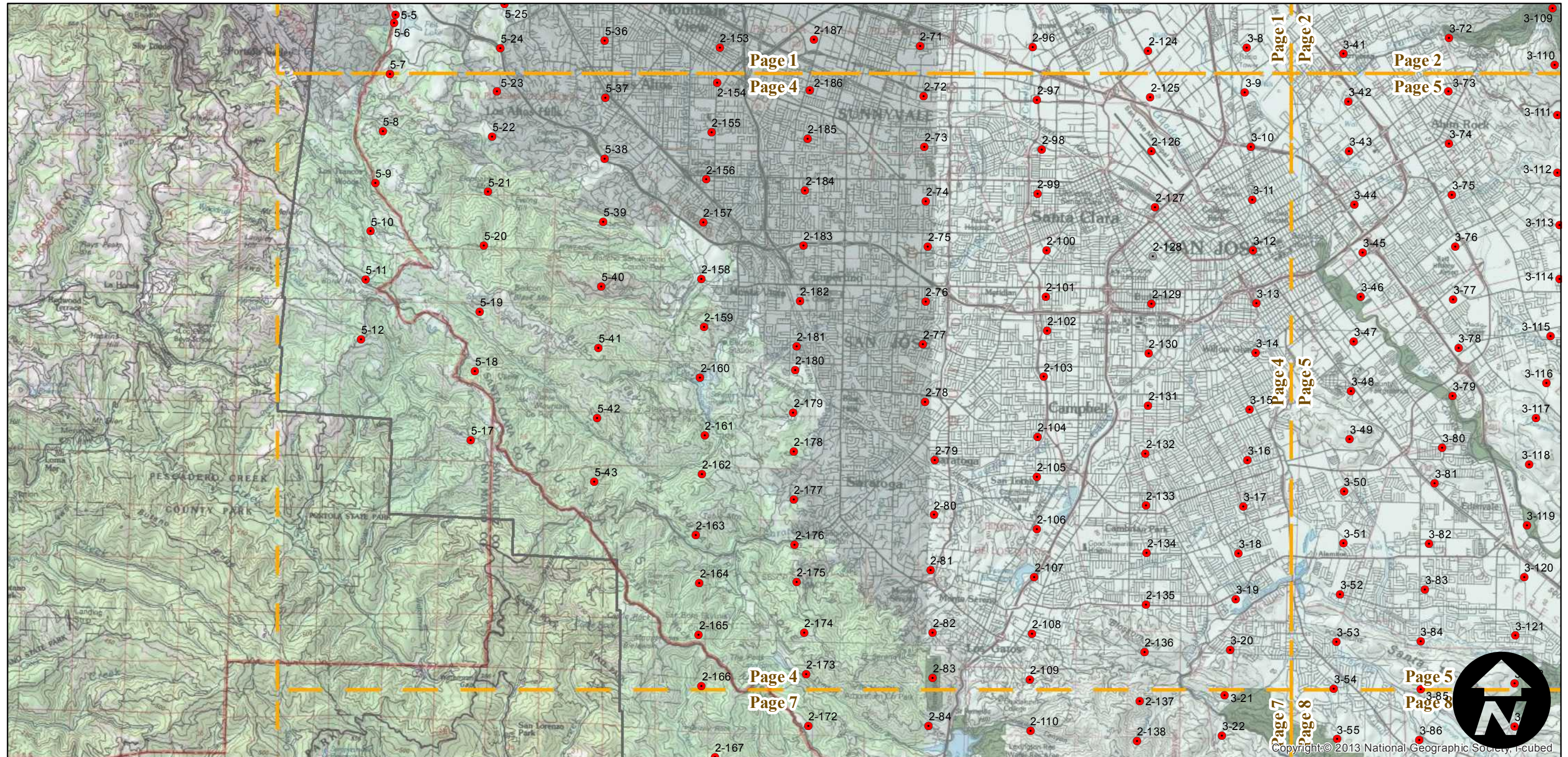
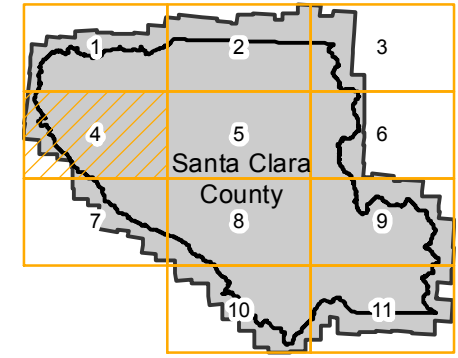
# CAS-SCL

Counties: Santa Clara  
Flight date(s): 01-01-1963 to 12-31-1963  
Scale: 1:20,000  
Overlap: 60%

Complete Metadata:  
<http://www.library.ucsb.edu/mil/aerial-photography-tools>

- MIL owns frame
- MIL does not own frame

## FLIGHT LOCATION





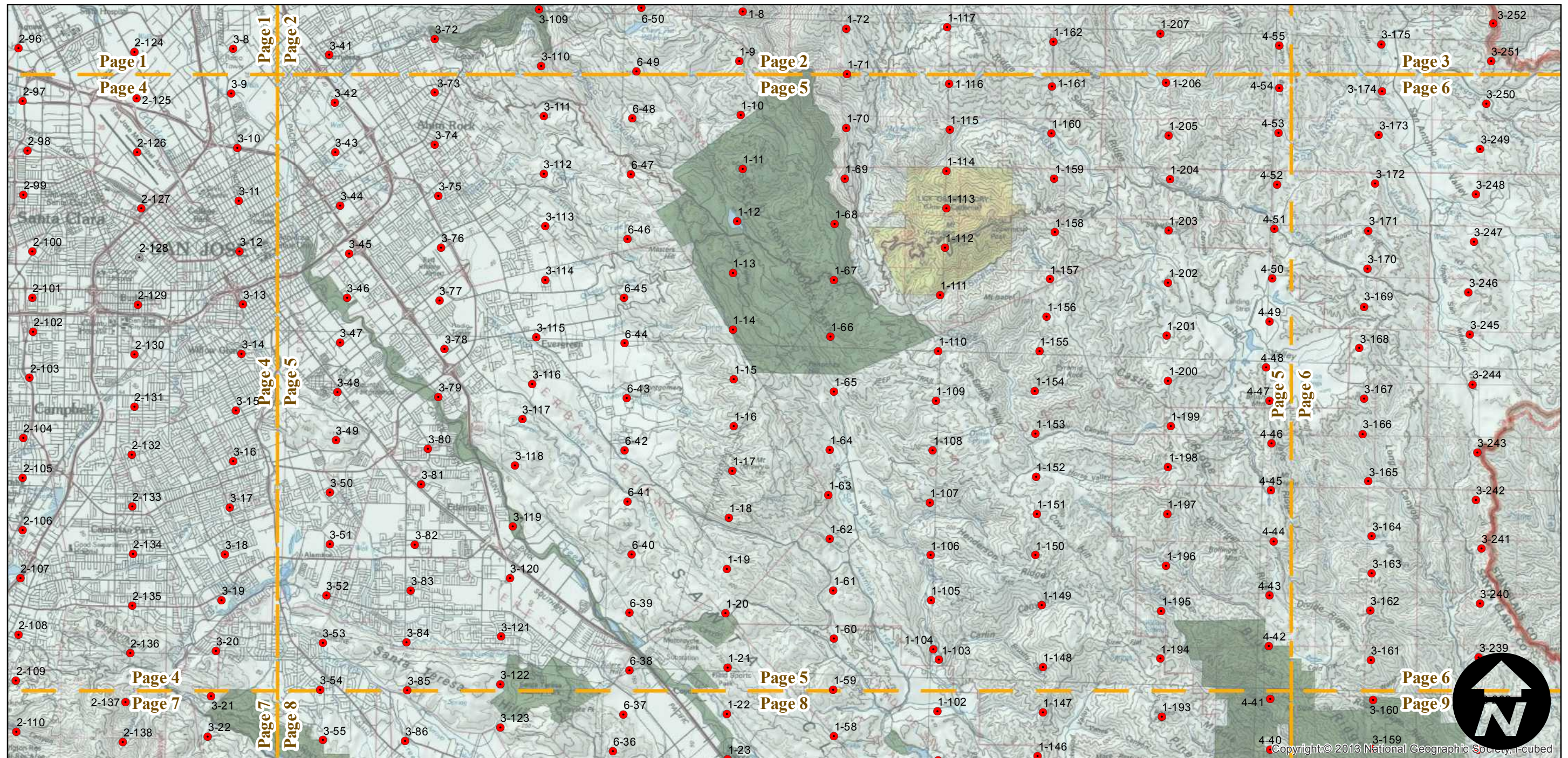
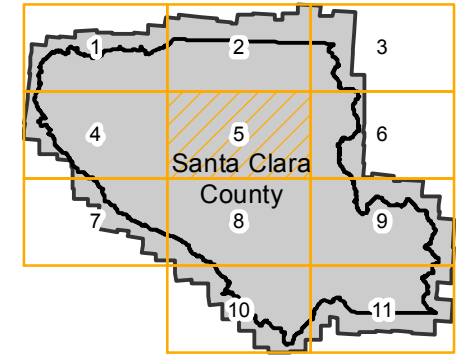
# CAS-SCL

Counties: Santa Clara  
Flight date(s): 01-01-1963 to 12-31-1963  
Scale: 1:20,000  
Overlap: 60%

Complete Metadata:  
<http://www.library.ucsb.edu/mil/aerial-photography-tools>

- MIL owns frame
- MIL does not own frame

## FLIGHT LOCATION



0 2.5 5 10 Miles

Index to Aerial Photography  
Page 5 of 11

Scale of this index: 1:125,000

Copyright © 2013 National Geographic Society, i-cubed







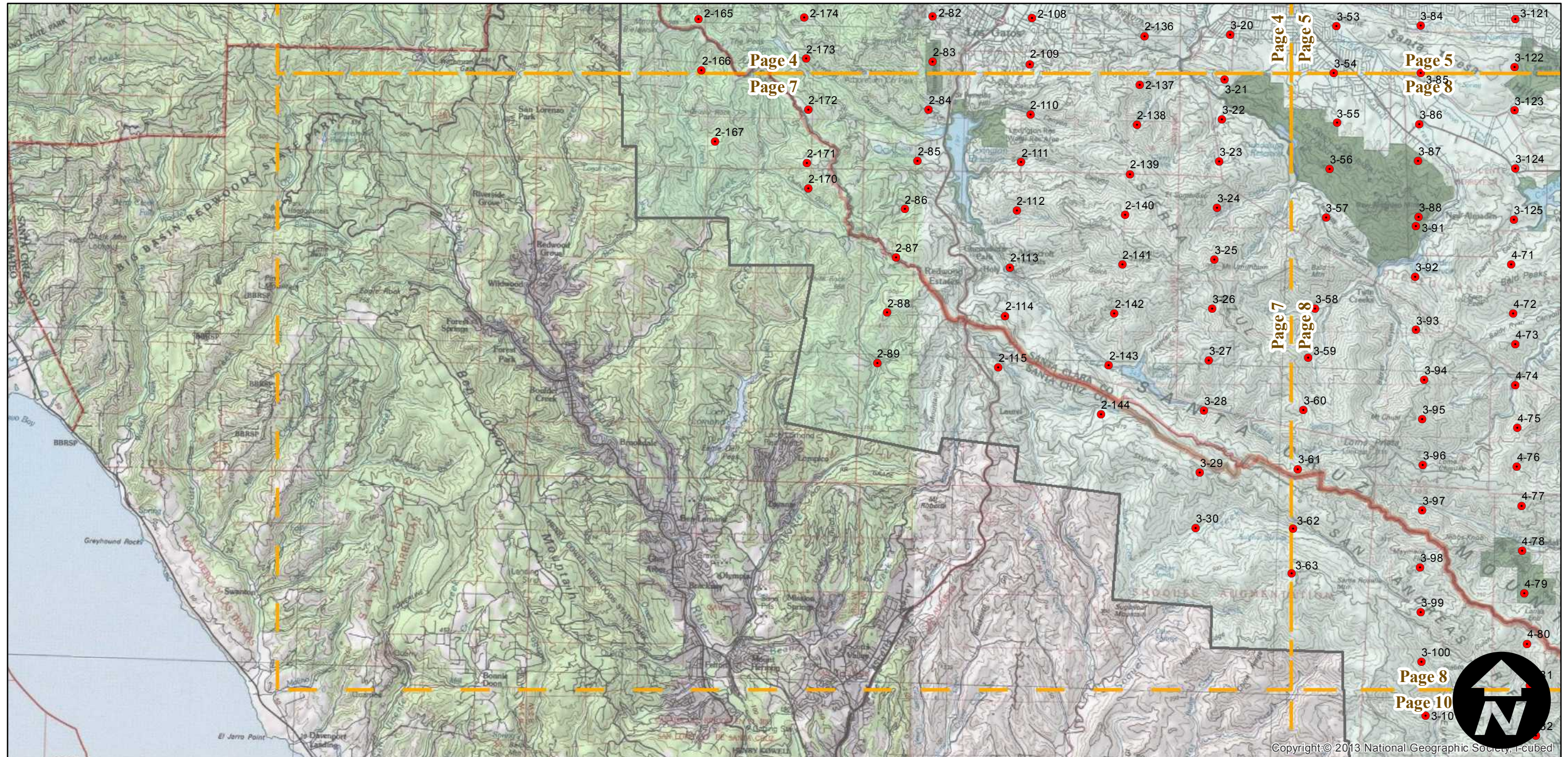
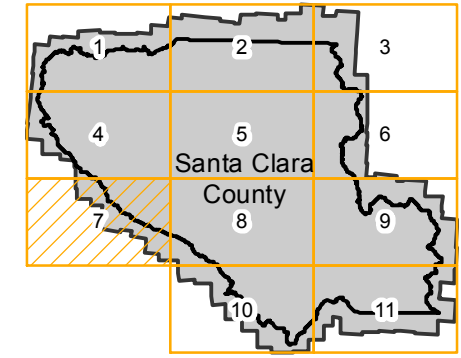
# CAS-SCL

Counties: Santa Clara  
Flight date(s): 01-01-1963 to 12-31-1963  
Scale: 1:20,000  
Overlap: 60%

Complete Metadata:  
<http://www.library.ucsb.edu/mil/aerial-photography-tools>

- MIL owns frame
- MIL does not own frame

## FLIGHT LOCATION



0 2.5 5 10 Miles

Index to Aerial Photography  
Page 7 of 11

Scale of this index: 1:125,000

Copyright © 2013 National Geographic Society, i-cubed



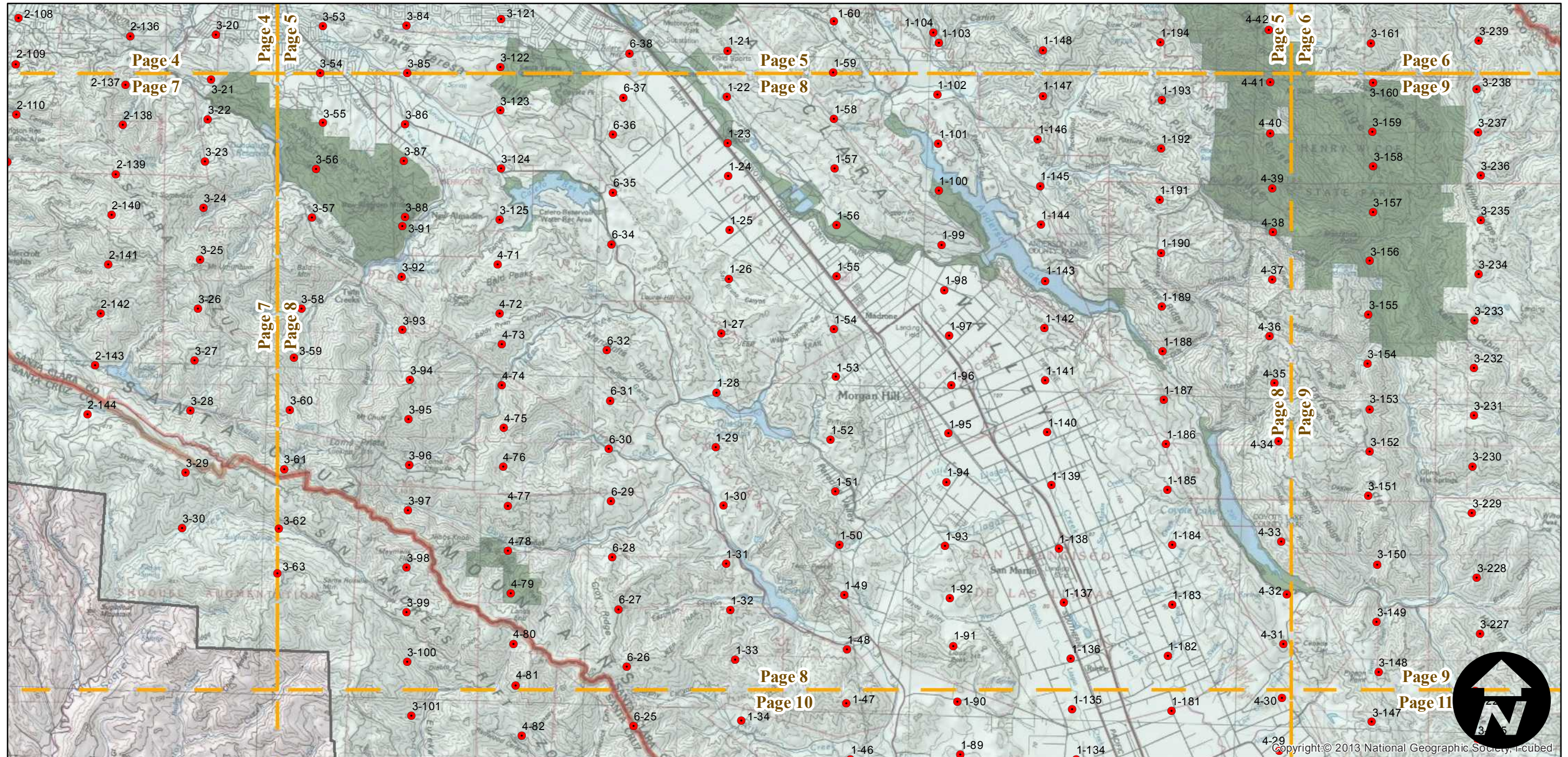
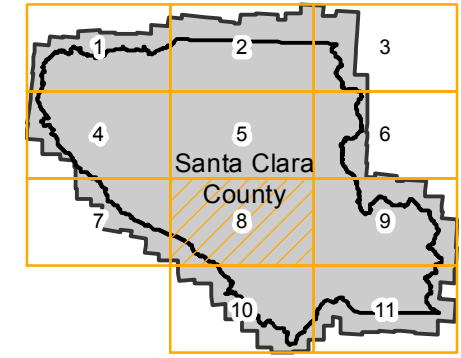
# CAS-SCL

Counties: Santa Clara  
Flight date(s): 01-01-1963 to 12-31-1963  
Scale: 1:20,000  
Overlap: 60%

Complete Metadata:  
<http://www.library.ucsb.edu/mil/aerial-photography-tools>

- MIL owns frame
- MIL does not own frame

## FLIGHT LOCATION



0 2.5 5 10 Miles

Index to Aerial Photography  
Page 8 of 11

Scale of this index: 1:125,000

Copyright: © 2013 National Geographic Society, i-cubed



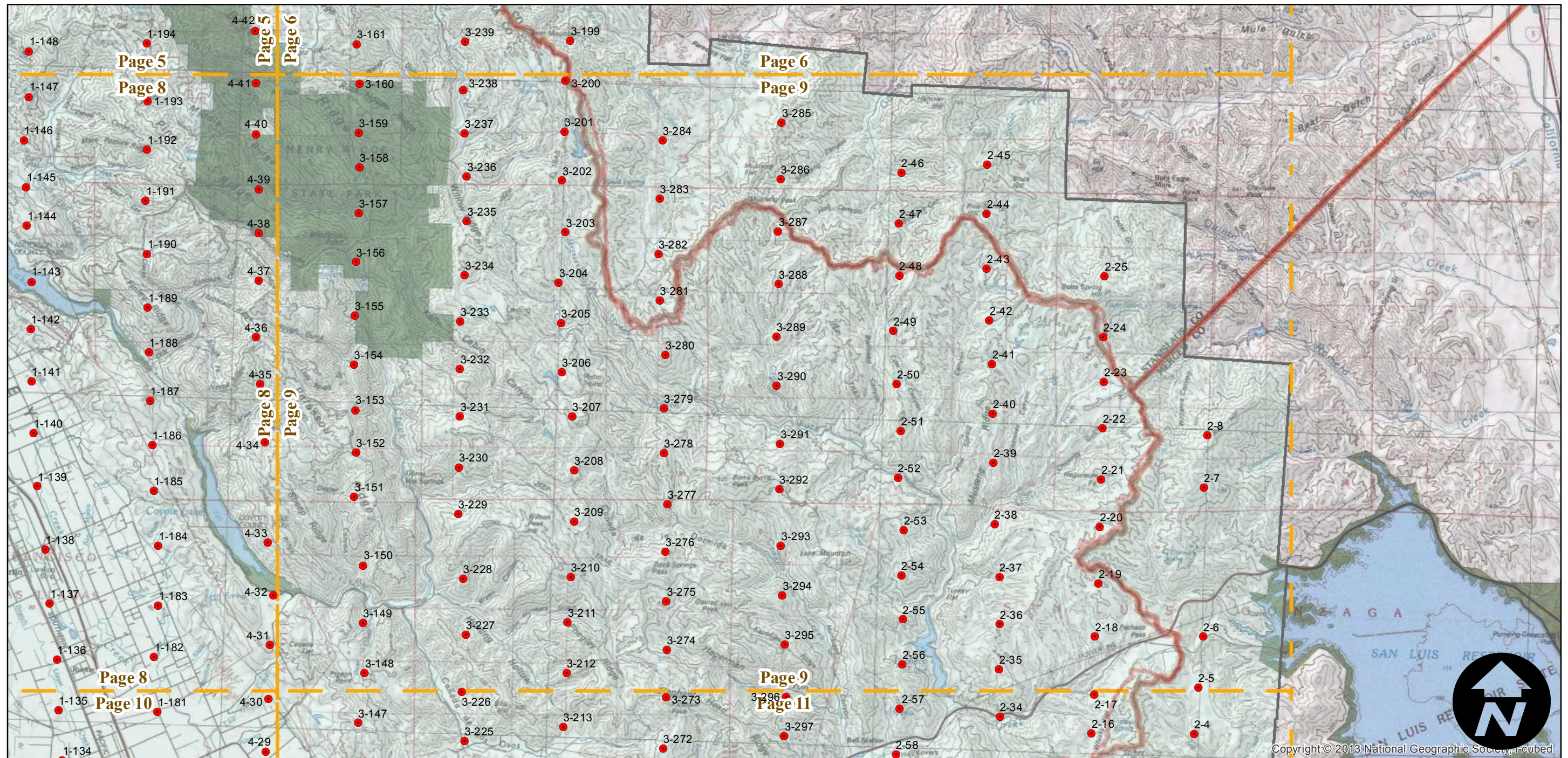
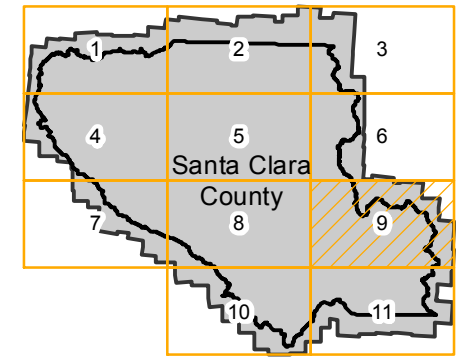
# CAS-SCL

Counties: Santa Clara  
Flight date(s): 01-01-1963 to 12-31-1963  
Scale: 1:20,000  
Overlap: 60%

Complete Metadata:  
<http://www.library.ucsb.edu/mil/aerial-photography-tools>

- MIL owns frame
- MIL does not own frame

## FLIGHT LOCATION



Copyright © 2013 National Geographic Society, i-cubed

0 2.5 5 10 Miles

Index to Aerial Photography  
Page 9 of 11

Scale of this index: 1:125,000



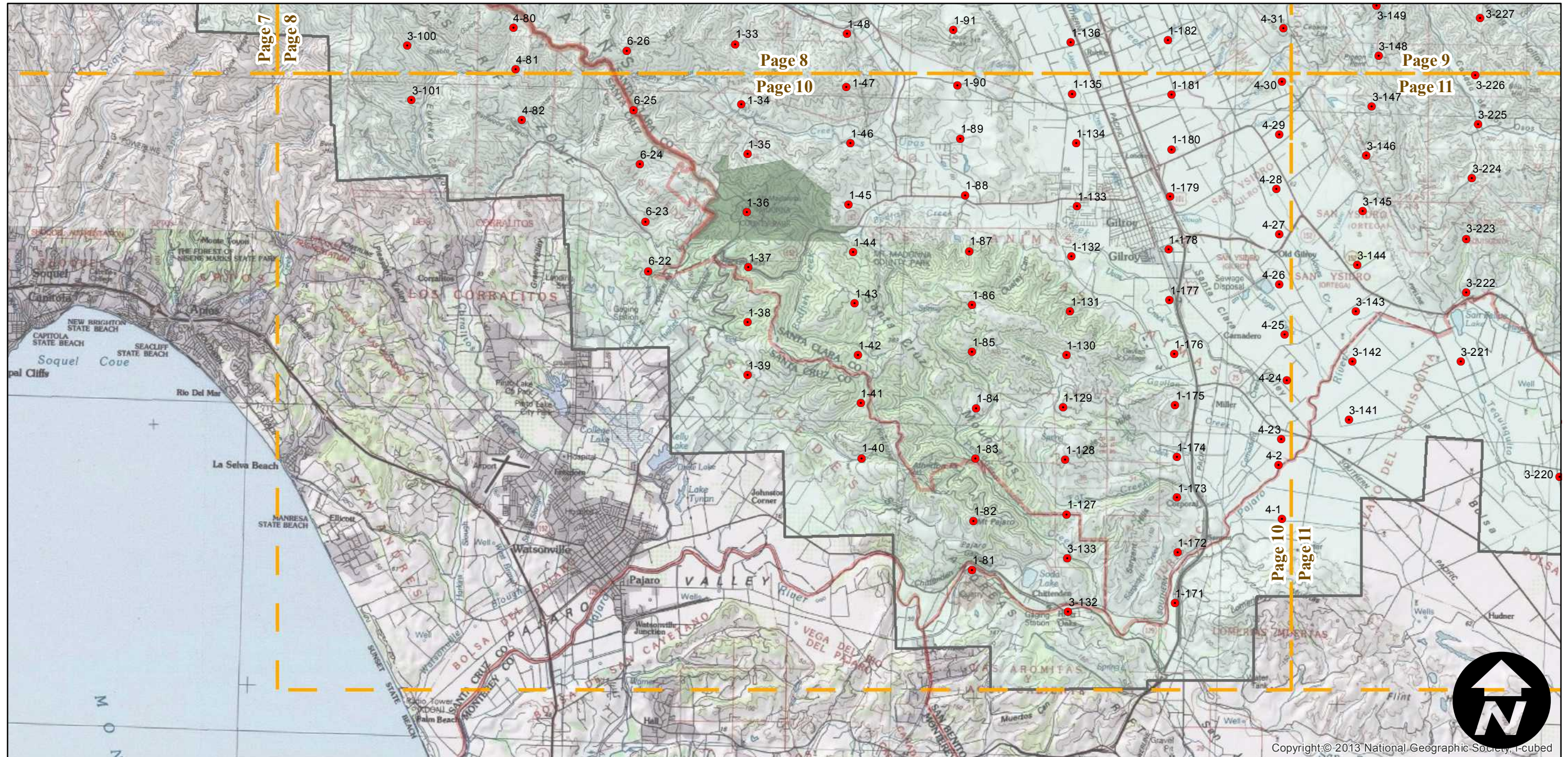
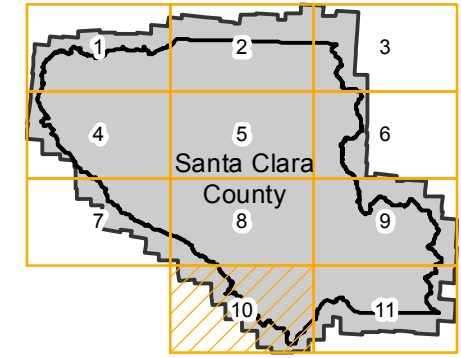
# CAS-SCL

Counties: Santa Clara  
Flight date(s): 01-01-1963 to 12-31-1963  
Scale: 1:20,000  
Overlap: 60%

Complete Metadata:  
<http://www.library.ucsb.edu/mil/aerial-photography-tools>

- MIL owns frame
- MIL does not own frame

## FLIGHT LOCATION





# CAS-SCL

Counties: Santa Clara  
Flight date(s): 01-01-1963 to 12-31-1963  
Scale: 1:20,000  
Overlap: 60%

Complete Metadata:  
<http://www.library.ucsb.edu/mil/aerial-photography-tools>

- MIL owns frame
- MIL does not own frame

## FLIGHT LOCATION

