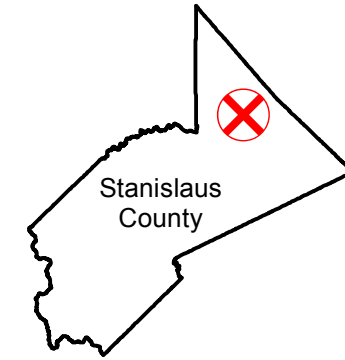


# CAS-Roads-2 (1:6K)

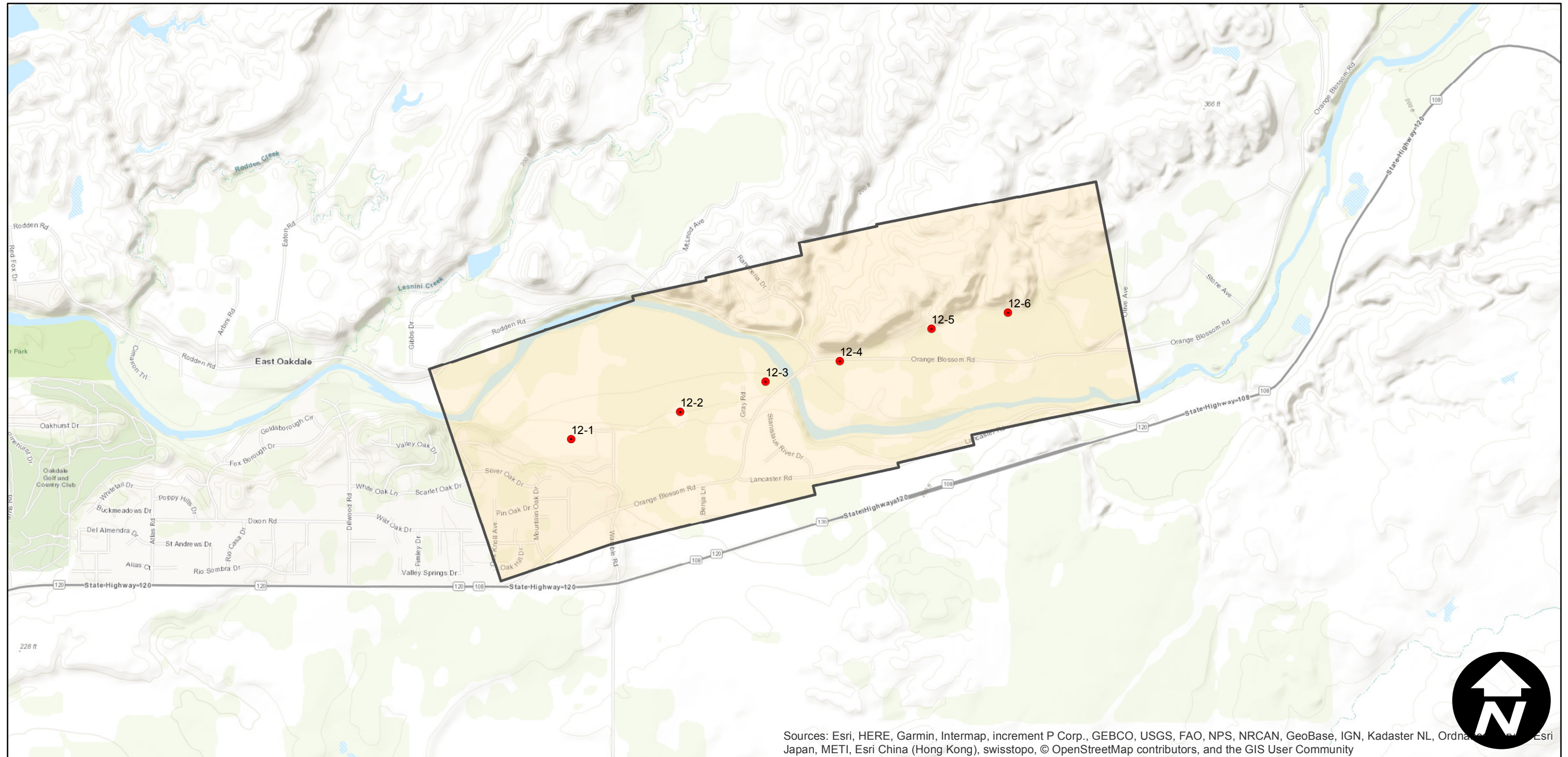
Counties: Stanislaus  
Flight date(s): 04-04-1963 to 04-29-1963  
Scale: 1:6,000  
Overlap: 60%

Note: Coverage of Crow's Landing, East Oakdale, La Grange, Newman, Modesto, Patterson, South Carpenter Road, Turklock, West Stuhr Road, Westley, and vicinity. Imagery acquired October 2009.

## FLIGHT LOCATION



Complete Metadata:  
<https://www.library.ucsb.edu/src/airphotos/aerial-photography-information>



Sources: Esri, HERE, Garmin, Intermap, increment P Corp., GEBCO, USGS, FAO, NPS, NRCAN, GeoBase, IGN, Kadaster NL, Ordnance Survey, Esri Japan, METI, Esri China (Hong Kong), swisstopo, © OpenStreetMap contributors, and the GIS User Community

