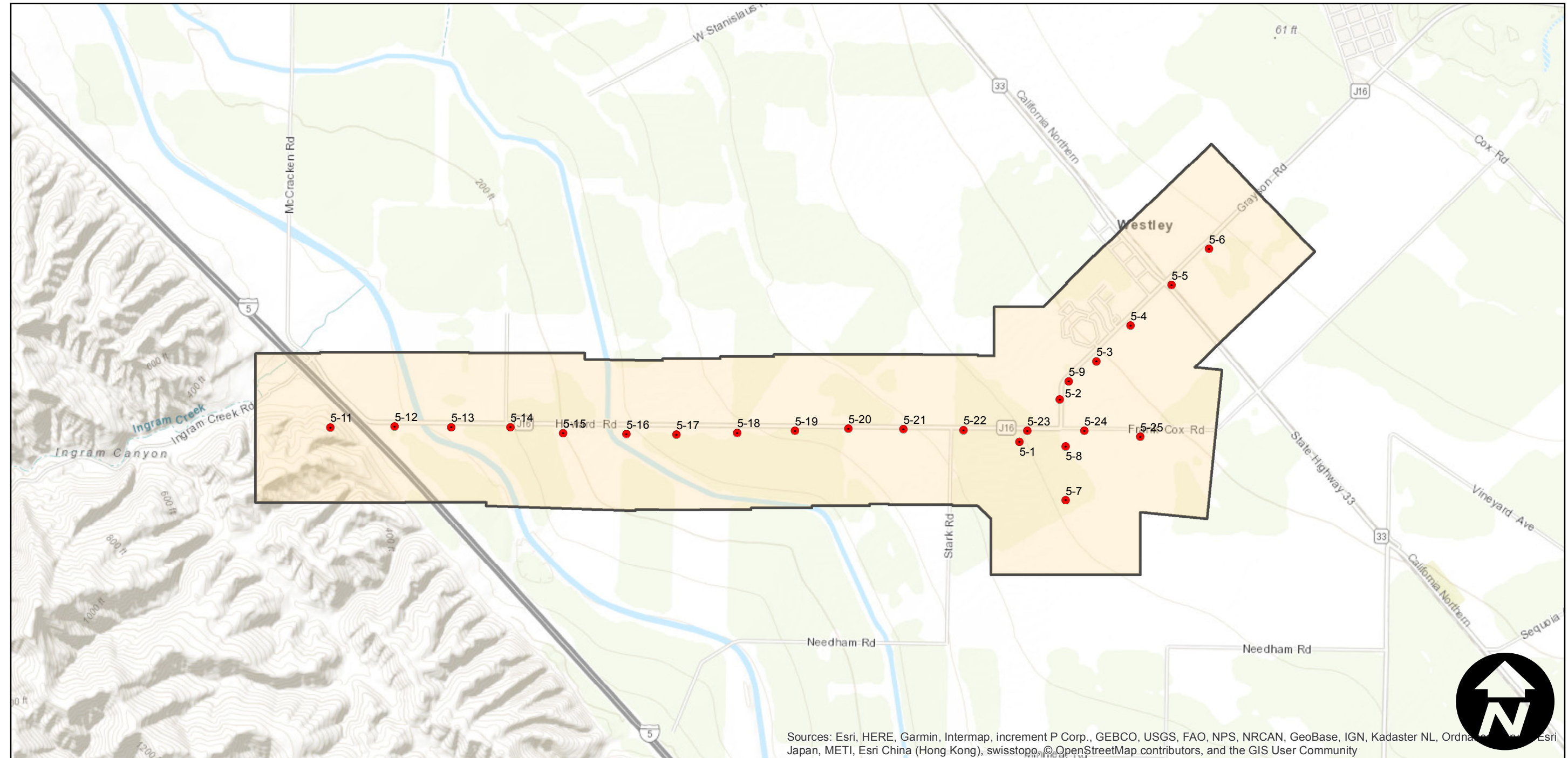
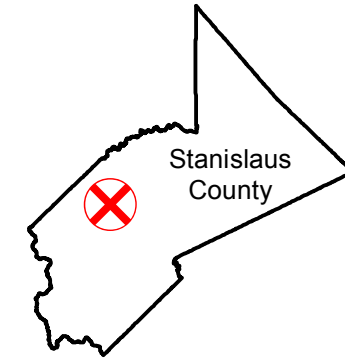


CAS-Roads-2 (1:4.8K)

Counties: Stanislaus
Flight date(s): 04-04-1963 to 04-29-1963
Scale: 1:4,800
Overlap: 60%

Note: Coverage of Crow's Landing, East Oakdale, La Grange, Newman, Modesto, Patterson, South Carpenter Road, Turklock, West Stuhr Road, Westley, and vicinity. Imagery acquired October 2009.

FLIGHT LOCATION



Sources: Esri, HERE, Garmin, Intermap, increment P Corp., GEBCO, USGS, FAO, NPS, NRCAN, GeoBase, IGN, Kadaster NL, Ordnance Survey, Esri Japan, METI, Esri China (Hong Kong), swisstopo, ©OpenStreetMap contributors, and the GIS User Community

0 0.5 1 2 Miles

Index to Aerial Photography
Page 1 of 1

Scale of this index: 1:30,000