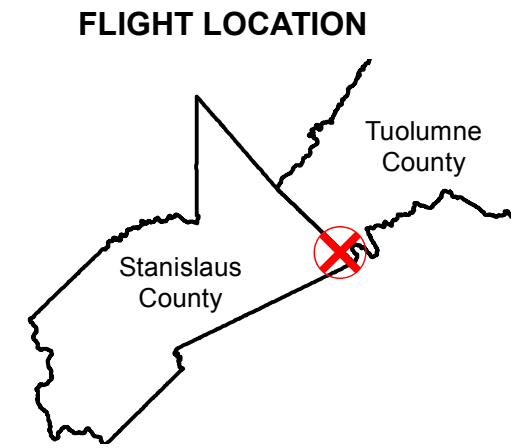


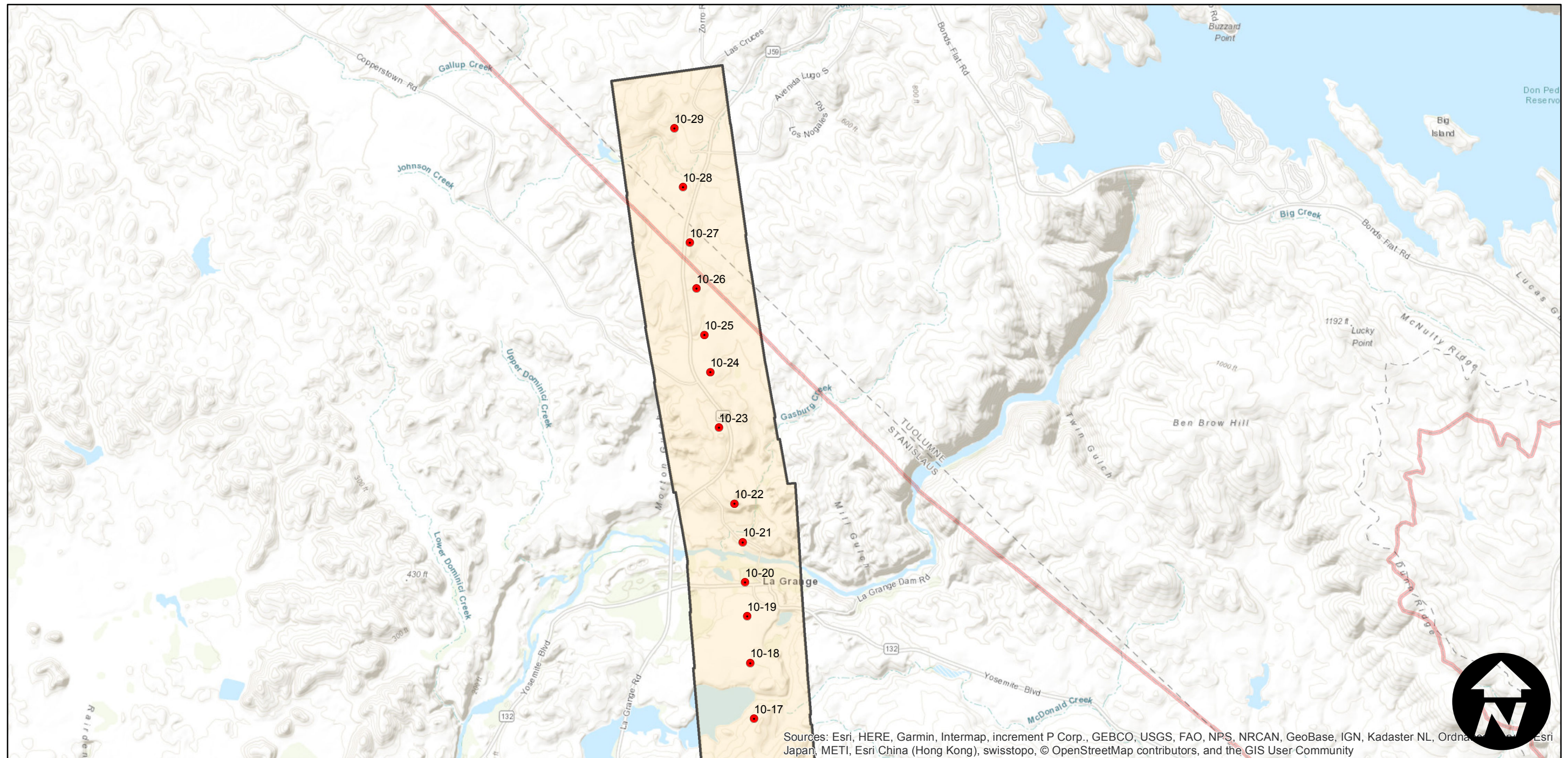
CAS-Roads-2 (1:4.8K)

Counties: Stanislaus, Tuolumne
Flight date(s): 04-04-1963 to 04-29-1963
Scale: 1:4,800
Overlap: 60%

Note: Coverage of Crow's Landing, East Oakdale, La Grange, Newman, Modesto, Patterson, South Carpenter Road, Turklock, West Stuhr Road, Westley, and vicinity. Imagery acquired October 2009.



Complete Metadata:
<https://www.library.ucsb.edu/src/airphotos/aerial-photography-information>



0 0.5 1 2 Miles

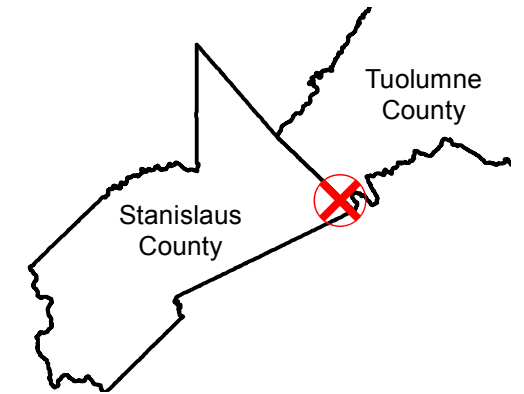
Scale of this index: 1:40,000

CAS-Roads-2 (1:4.8K)

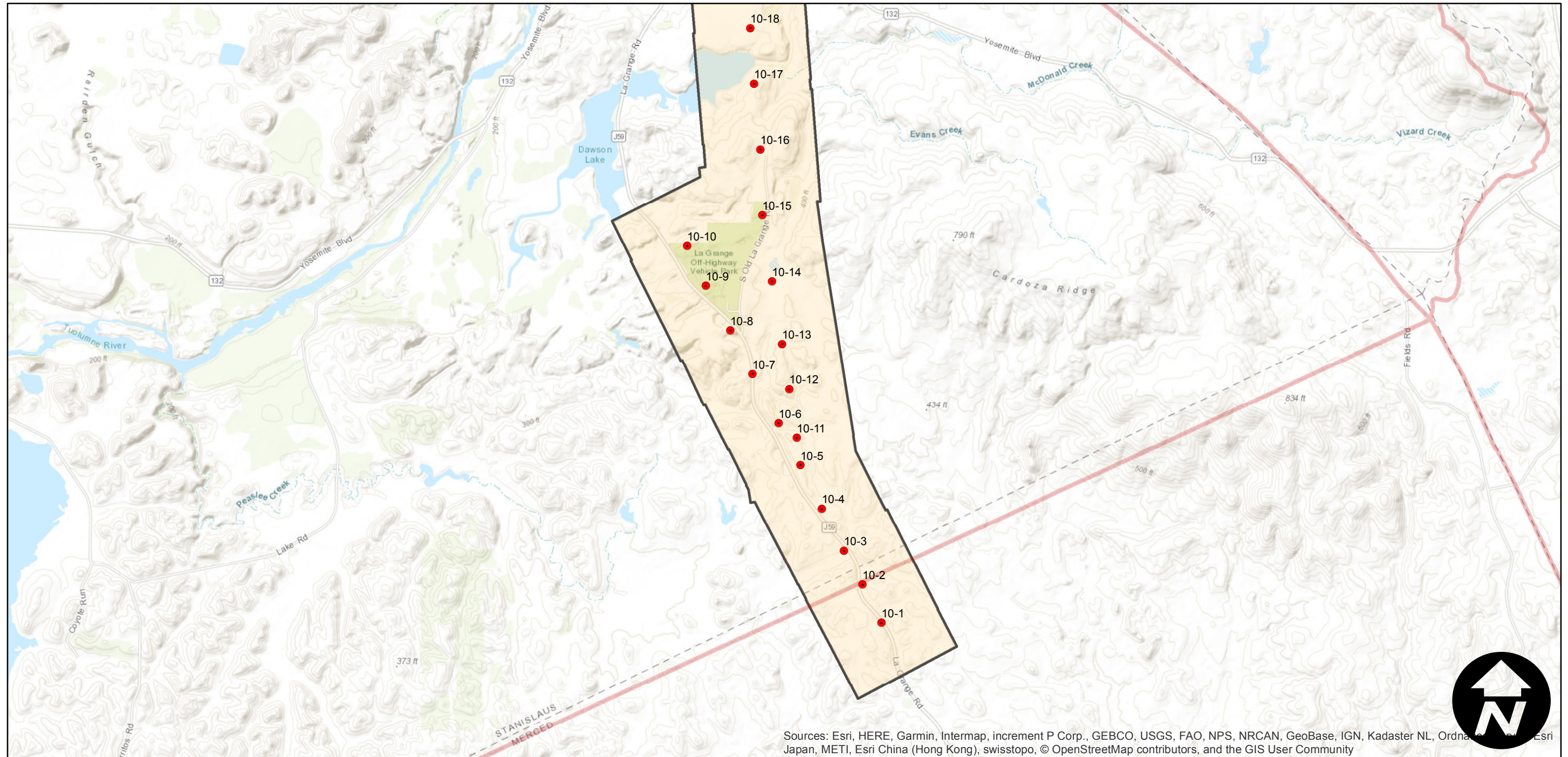
Counties: Stanislaus, Tuolumne
Flight date(s): 04-04-1963 to 04-29-1963
Scale: 1:4,800
Overlap: 60%

Note: Coverage of Crow's Landing, East Oakdale, La Grange, Newman, Modesto, Patterson, South Carpenter Road, Turklock, West Stuhr Road, Westley, and vicinity. Imagery acquired October 2009.

FLIGHT LOCATION



Complete Metadata:
<https://www.library.ucsb.edu/src/airphotos/aerial-photography-information>



0 0.5 1 2 Miles

Index to Aerial Photography
Page 2 of 2

Scale of this index: 1:40,000