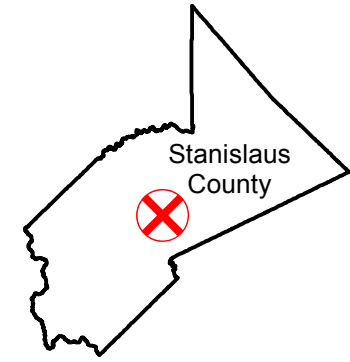


CAS-Roads-2 (1:4.8K)

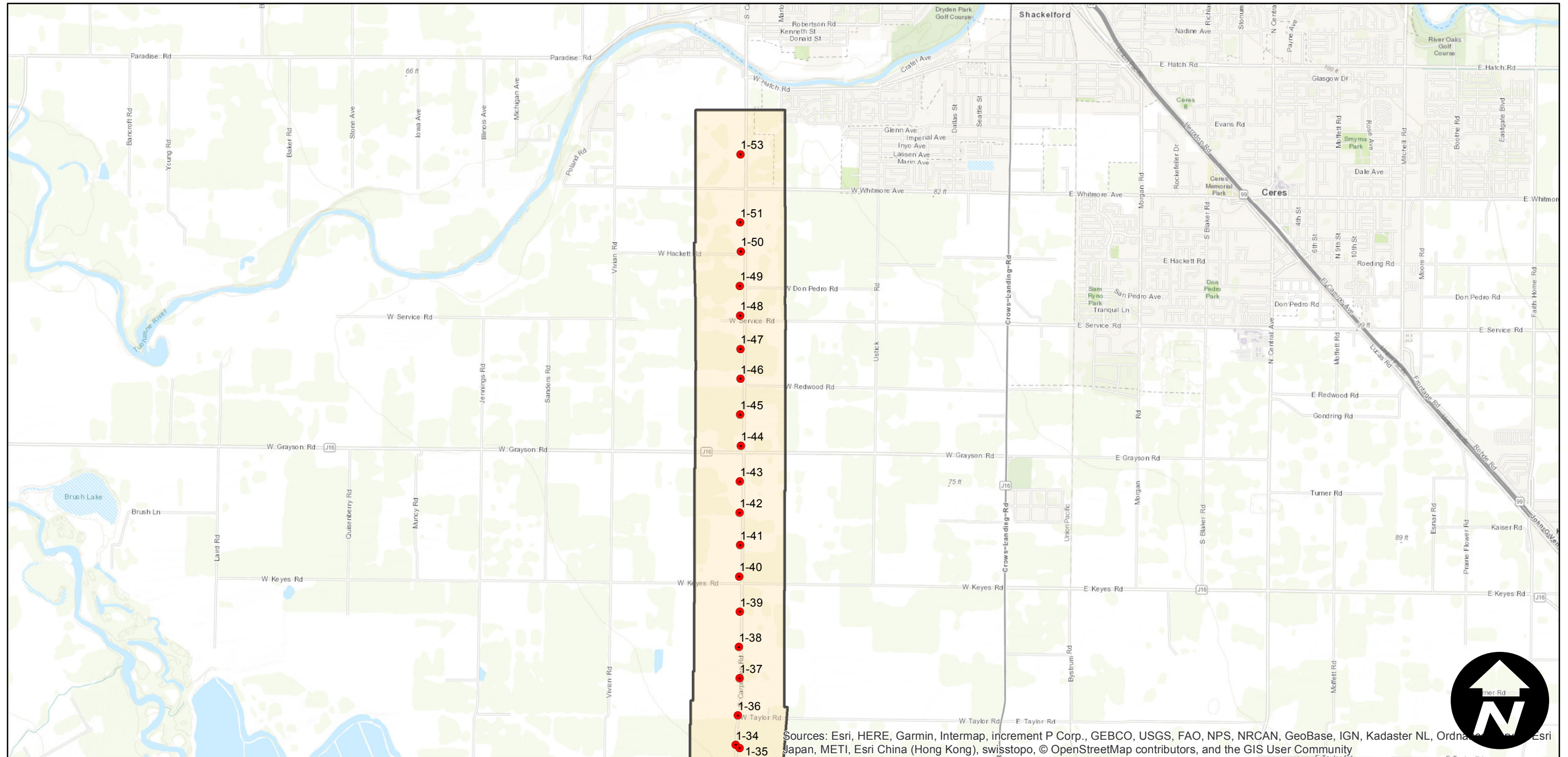
Counties: Stanislaus
Flight date(s): 04-04-1963 to 04-29-1963
Scale: 1:4,800
Overlap: 60%

Note: Coverage of Crow's Landing, East Oakdale, La Grange, Newman, Modesto, Patterson, South Carpenter Road, Turklock, West Stuhr Road, Westley, and vicinity. Imagery acquired October 2009.

FLIGHT LOCATION



Complete Metadata:
<https://www.library.ucsb.edu/src/airphotos/aerial-photography-information>



0 1 2 4 Miles

Index to Aerial Photography
Page 1 of 3

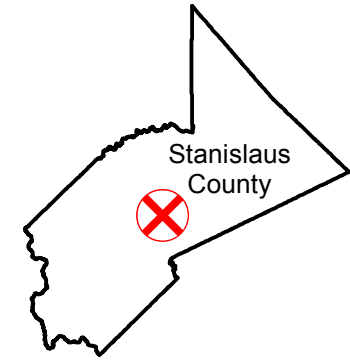
Scale of this index: 1:50,000

CAS-Roads-2 (1:4.8K)

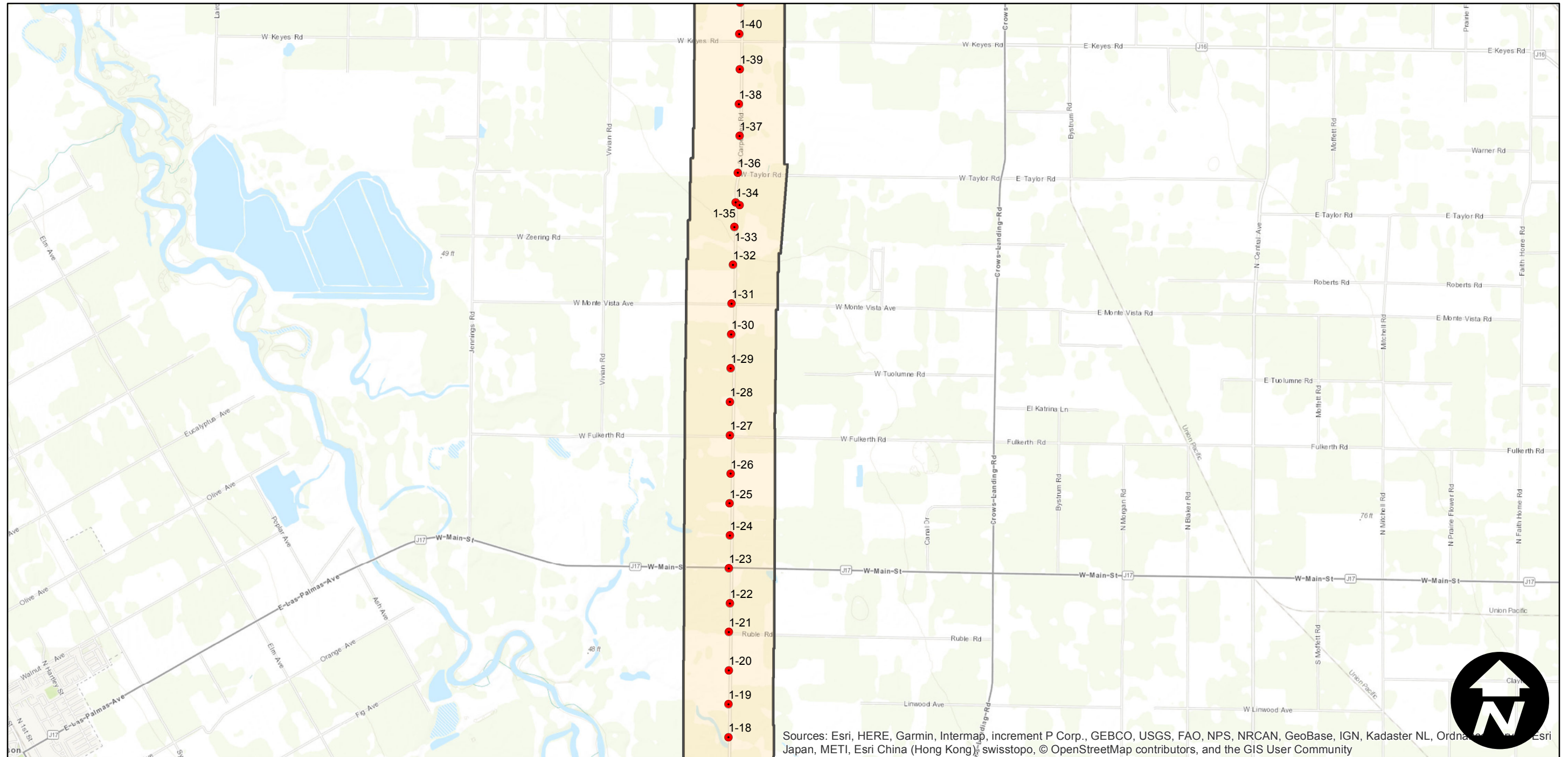
Counties: Stanislaus
Flight date(s): 04-04-1963 to 04-29-1963
Scale: 1:4,800
Overlap: 60%

Note: Coverage of Crow's Landing, East Oakdale, La Grange, Newman, Modesto, Patterson, South Carpenter Road, Turklock, West Stuhr Road, Westley, and vicinity. Imagery acquired October 2009.

FLIGHT LOCATION



Complete Metadata:
<https://www.library.ucsb.edu/src/airphotos/aerial-photography-information>



Sources: Esri, HERE, Garmin, Intermap, increment P Corp., GEBCO, USGS, FAO, NPS, NRCAN, GeoBase, IGN, Kadaster NL, Ordnance Survey, Esri Japan, METI, Esri China (Hong Kong), Swisstopo, © OpenStreetMap contributors, and the GIS User Community

0 1 2 4 Miles

Index to Aerial Photography
Page 2 of 3

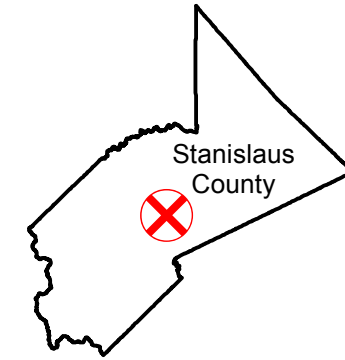
Scale of this index: 1:50,000

CAS-Roads-2 (1:4.8K)

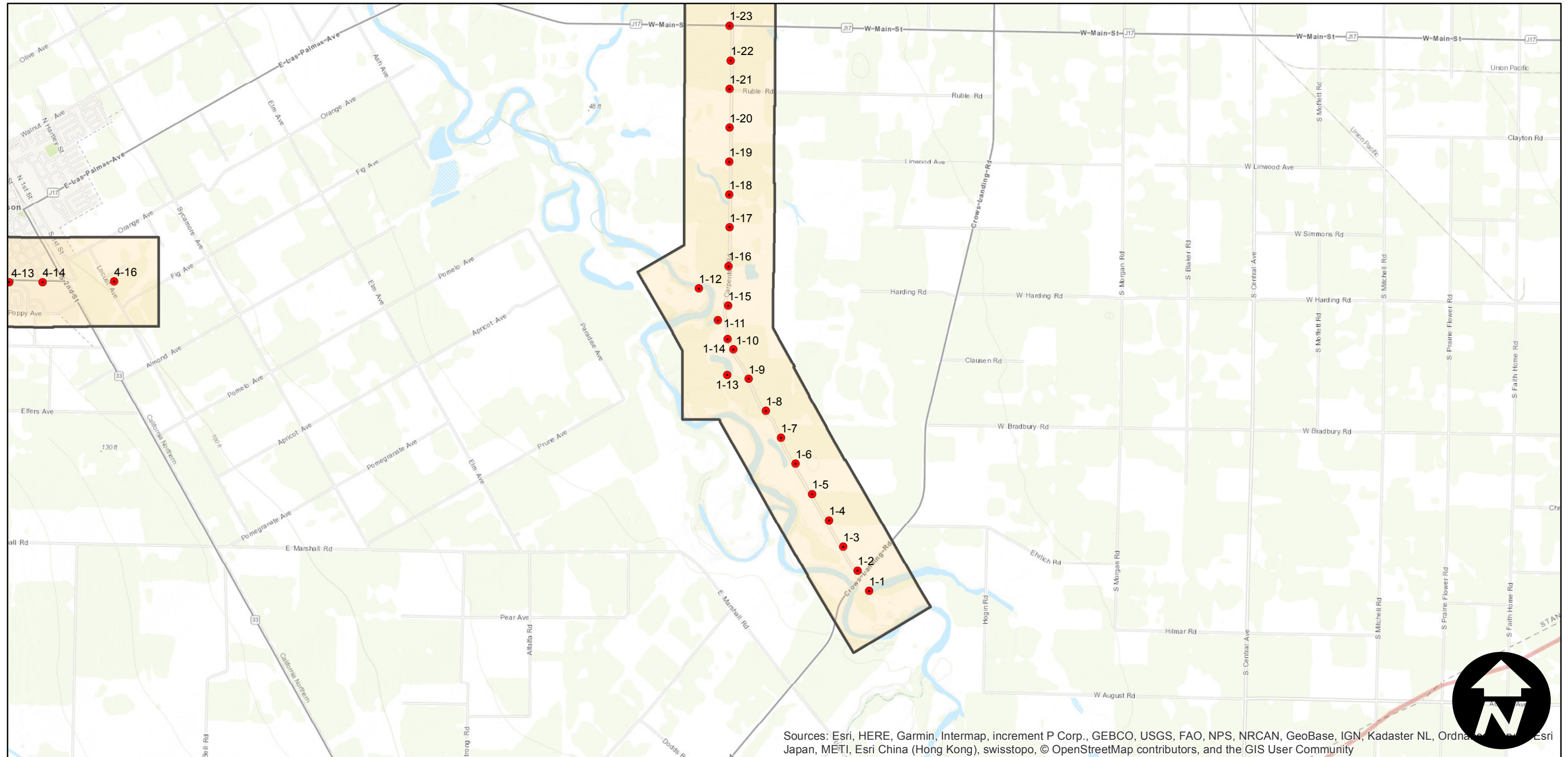
Counties: Stanislaus
Flight date(s): 04-04-1963 to 04-29-1963
Scale: 1:4,800
Overlap: 60%

Note: Coverage of Crow's Landing, East Oakdale, La Grange, Newman, Modesto, Patterson, South Carpenter Road, Turklock, West Stuhr Road, Westley, and vicinity. Imagery acquired October 2009.

FLIGHT LOCATION



Complete Metadata:
<https://www.library.ucsb.edu/src/airphotos/aerial-photography-information>



Sources: Esri, HERE, Garmin, Intermap, increment P Corp., GEBCO, USGS, FAO, NPS, NRCAN, GeoBase, IGN, Kadaster NL, Ordnance Survey, Esri Japan, METI, Esri China (Hong Kong), swisstopo, © OpenStreetMap contributors, and the GIS User Community

0 1 2 4 Miles

Index to Aerial Photography
Page 3 of 3

Scale of this index: 1:50,000