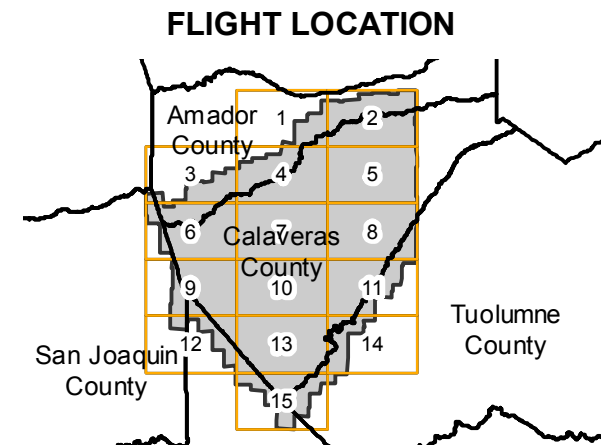


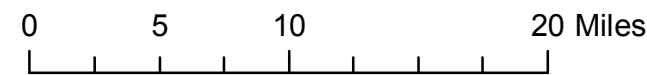
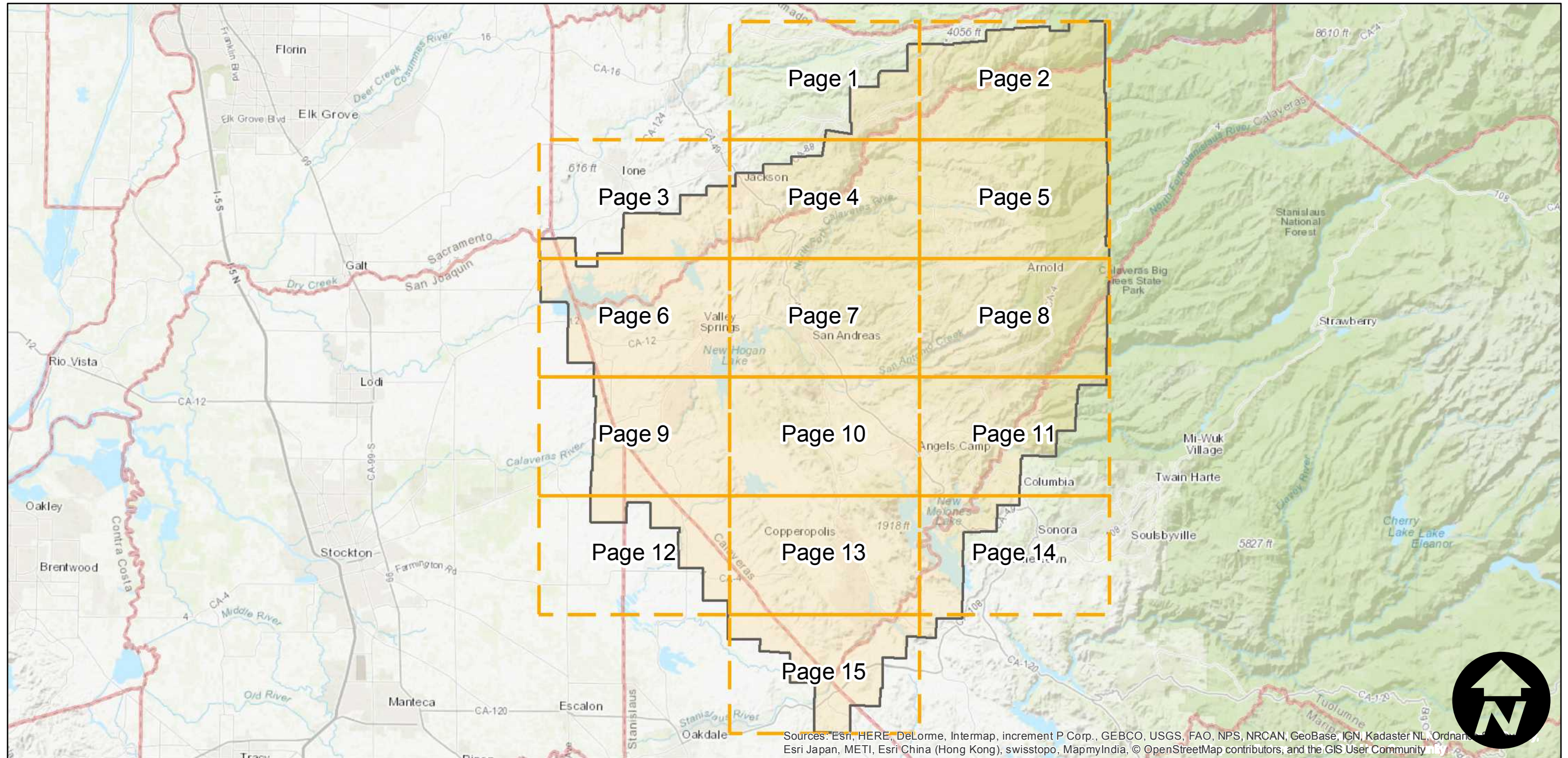
# CAS-CAL (1:20K)

Counties: Calaveras, Amador, Tuolumne  
 Flight date(s): 09-10-1962 to 11-18-1962  
 Scale: 1:20,000  
 Overlap: 60%

Note: Coverage includes Rancho Calaveras, Milton, San Andreas, Porter, and Arnold. Western 2/3 of county at 1:20,000. Eastern 1/3 of county at 1:15,840.



Complete Metadata:  
<http://www.library.ucsb.edu/map-imagery-lab/aerial-photography-information>



Index to Aerial Photography  
 Page Key

Scale of this index: 1:470,000

Sources: Esri, HERE, DeLorme, Intermap, increment P Corp., GEBCO, USGS, FAO, NPS, NRCAN, GeoBase, IGN, Kadaster NL, Ordnance Survey, Esri Japan, METI, Esri China (Hong Kong), swisstopo, MapmyIndia, © OpenStreetMap contributors, and the GIS User Community

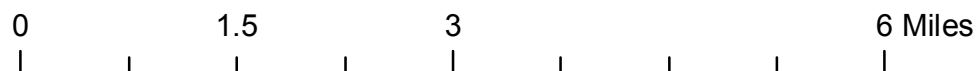
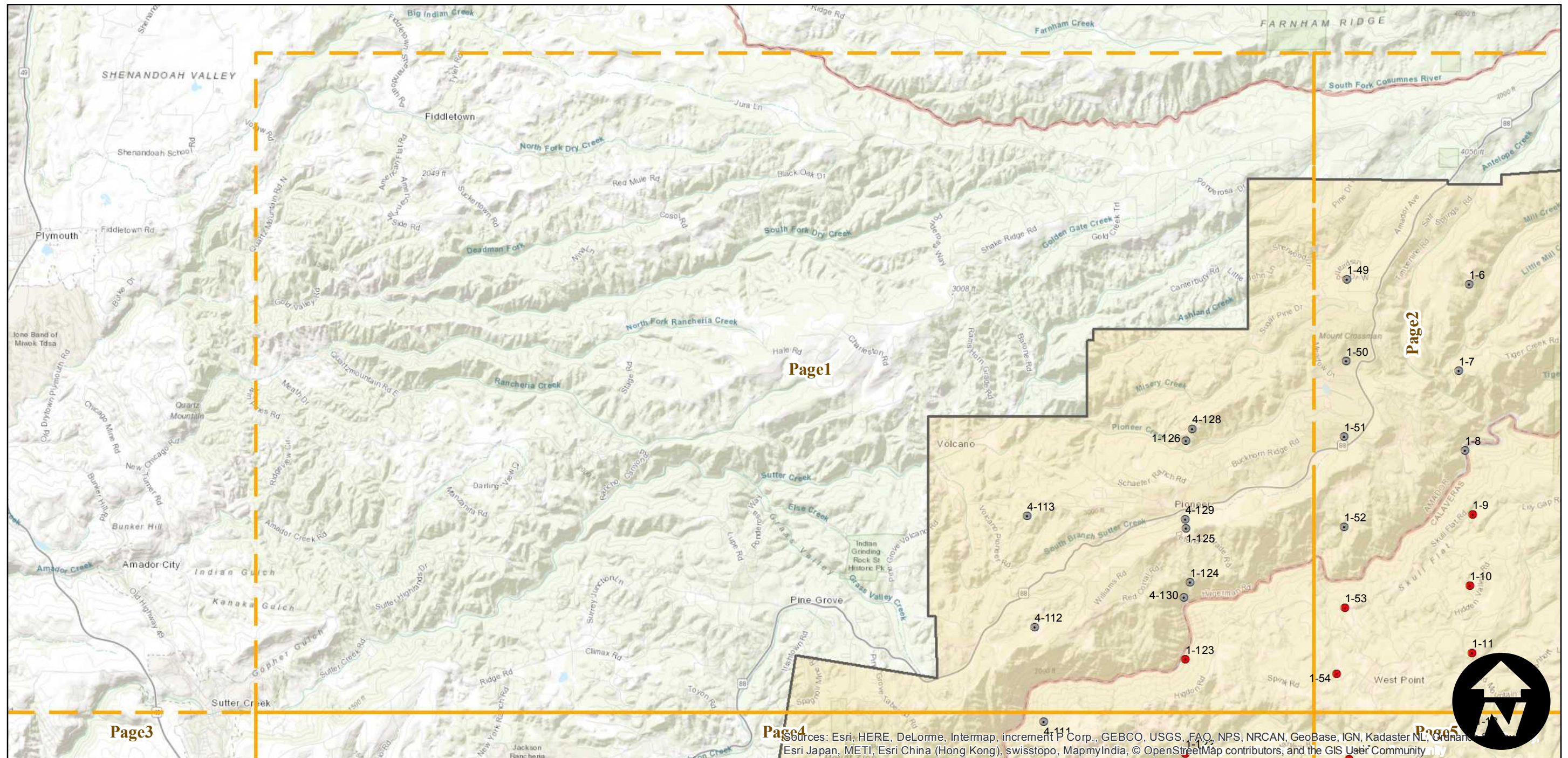
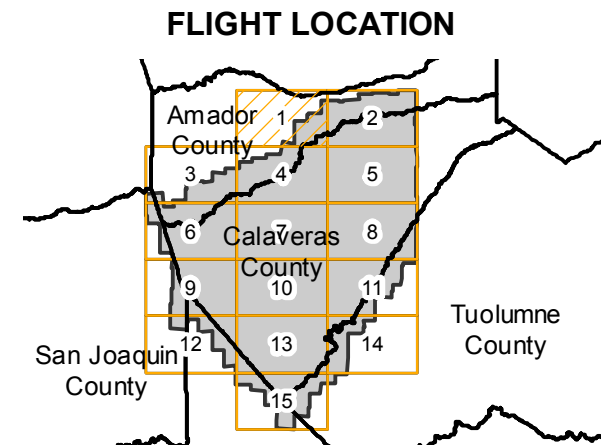
# CAS-CAL (1:20K)

Counties: Calaveras, Amador, Tuolumne  
 Flight date(s): 09-10-1962 to 11-18-1962  
 Scale: 1:20,000  
 Overlap: 60%

Complete Metadata:  
<http://www.library.ucsb.edu/map-imagery-lab/aerial-photography-information>

Note: Coverage includes Rancho Calaveras, Milton, San Andreas, Porter, and Arnold. Western 2/3 of county at 1:20,000. Eastern 1/3 of county at 1:15,840.

- MIL owns frame
- MIL does not own frame



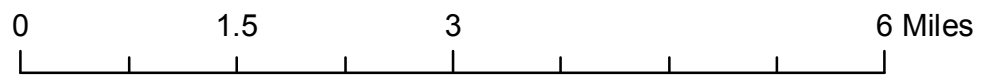
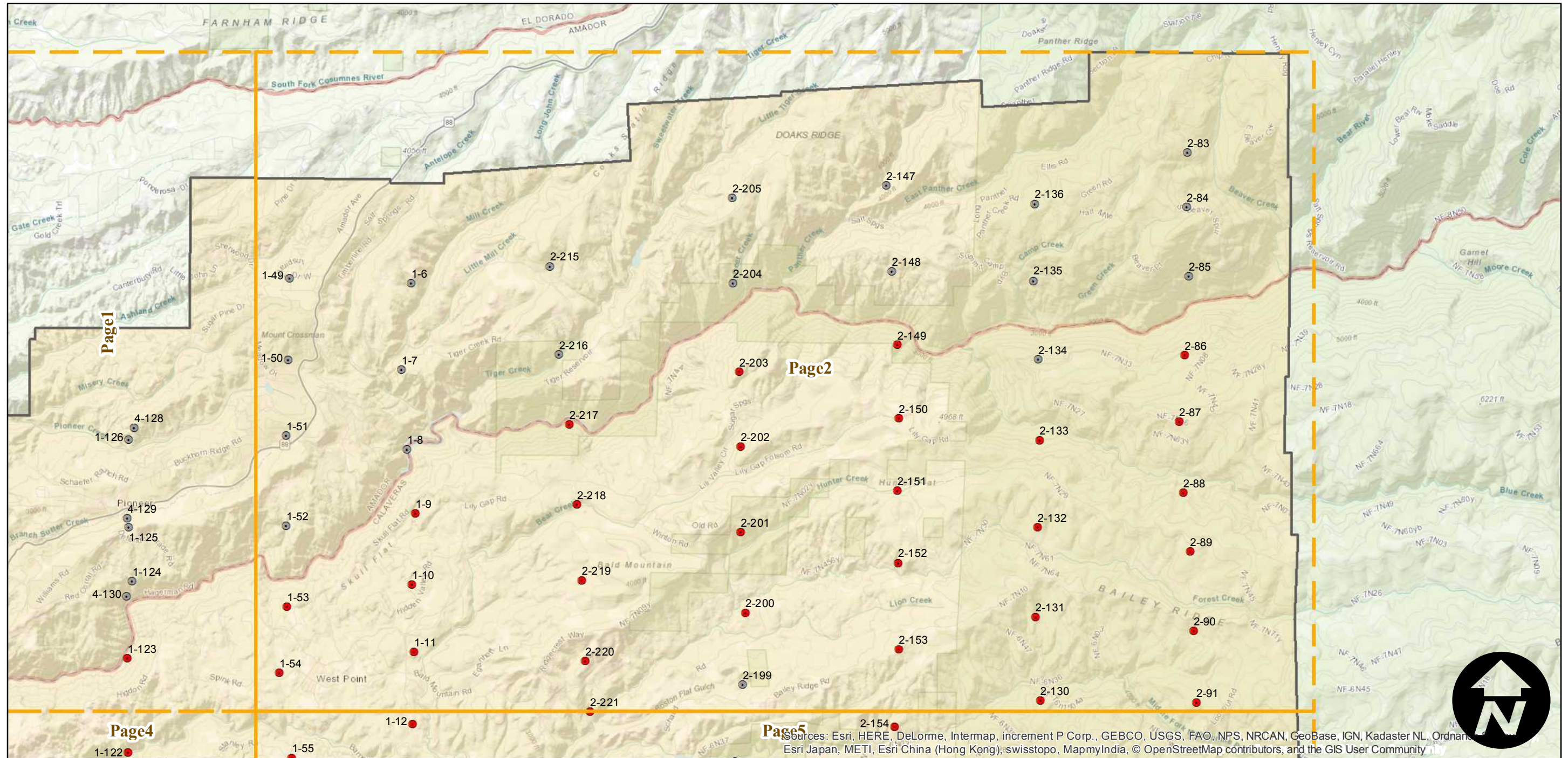
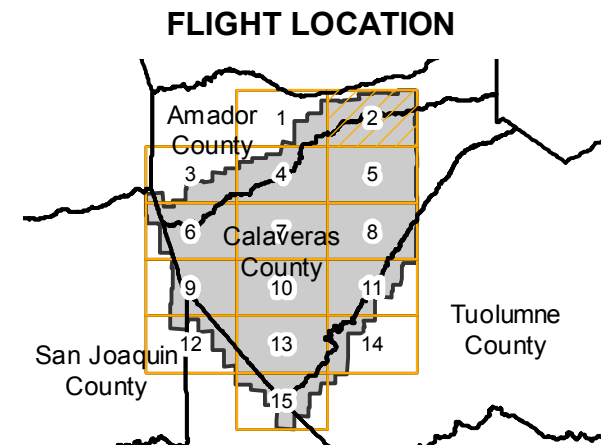
# CAS-CAL (1:20K)

Counties: Calaveras, Amador, Tuolumne  
 Flight date(s): 09-10-1962 to 11-18-1962  
 Scale: 1:20,000  
 Overlap: 60%

Complete Metadata:  
<http://www.library.ucsb.edu/map-imagery-lab/aerial-photography-information>

Note: Coverage includes Rancho Calaveras, Milton, San Andreas, Porter, and Arnold. Western 2/3 of county at 1:20,000. Eastern 1/3 of county at 1:15,840.

- MIL owns frame
- MIL does not own frame



Sources: Esri, HERE, DeLorme, Intermap, increment P Corp., GEBCO, USGS, FAO, NPS, NRCAN, GeoBase, IGN, Kadaster NL, Ordnance Survey, Esri Japan, METI, Esri China (Hong Kong), swisstopo, MapmyIndia, © OpenStreetMap contributors, and the GIS User Community

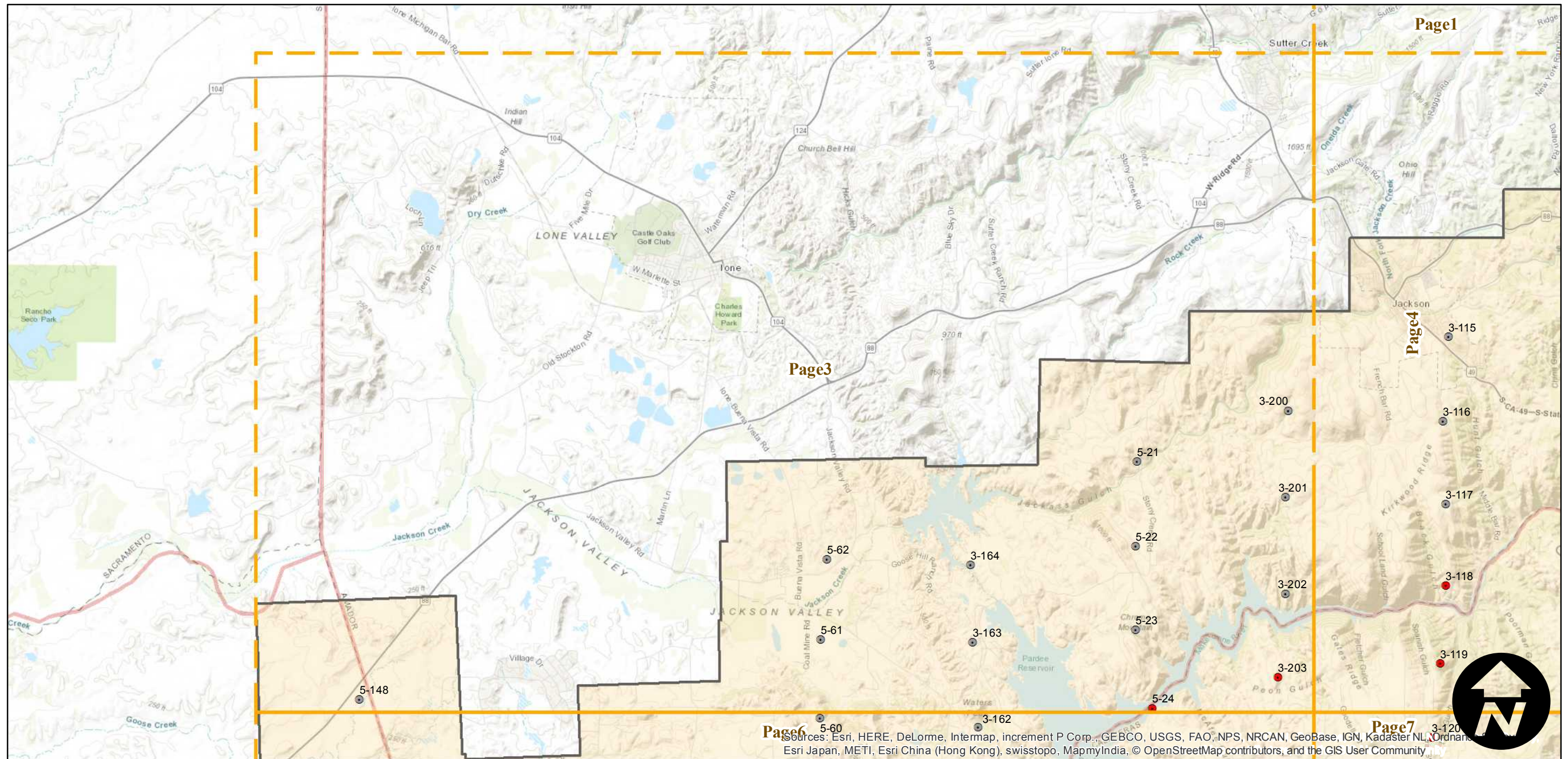
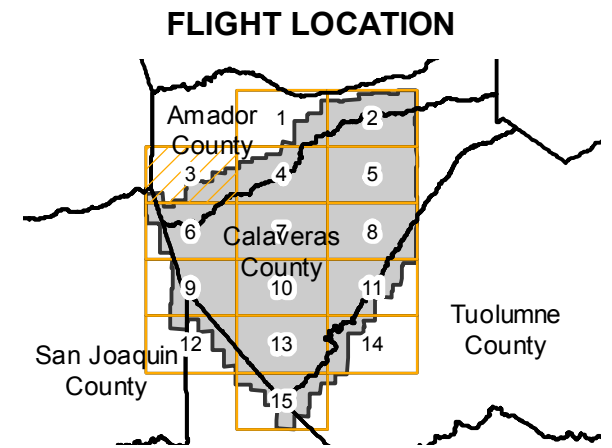
# CAS-CAL (1:20K)

Counties: Calaveras, Amador, Tuolumne  
 Flight date(s): 09-10-1962 to 11-18-1962  
 Scale: 1:20,000  
 Overlap: 60%

Complete Metadata:  
<http://www.library.ucsb.edu/map-imagery-lab/aerial-photography-information>

Note: Coverage includes Rancho Calaveras, Milton, San Andreas, Porter, and Arnold. Western 2/3 of county at 1:20,000. Eastern 1/3 of county at 1:15,840.

- MIL owns frame
- MIL does not own frame



0 1.5 3 6 Miles

Index to Aerial Photography  
 Page 3 of 15

Scale of this index: 1:84,500

Sources: Esri, HERE, DeLorme, Intermap, increment P Corp., GEBCO, USGS, FAO, NPS, NRCAN, GeoBase, IGN, Kadaster NL, Ordnance Survey, Esri Japan, METI, Esri China (Hong Kong), swisstopo, MapmyIndia, © OpenStreetMap contributors, and the GIS User Community

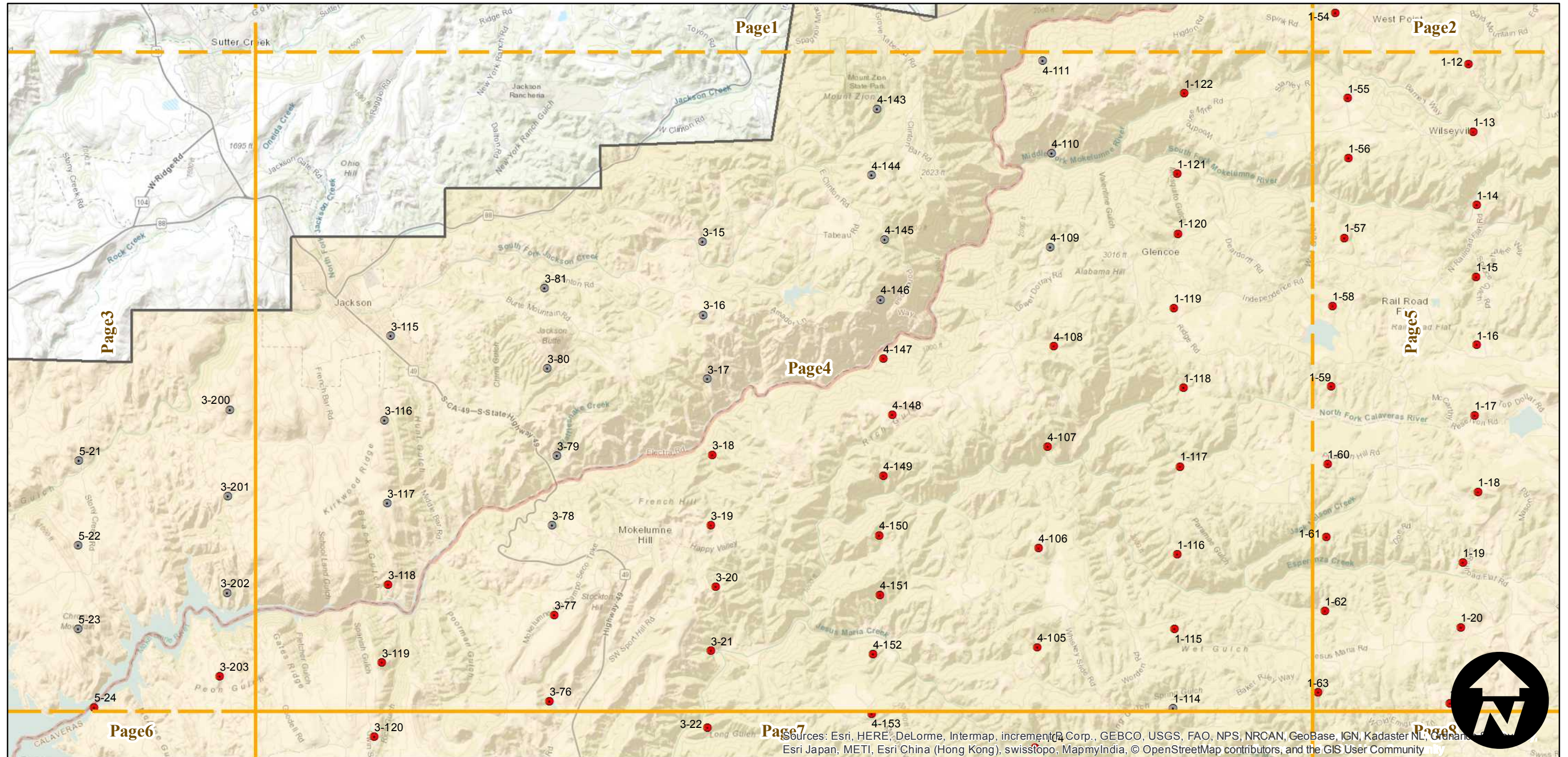
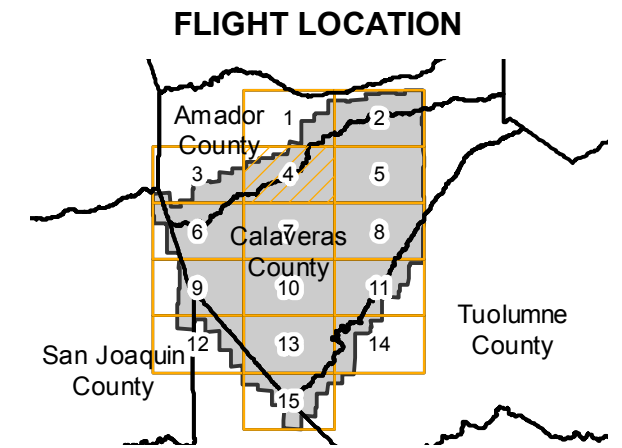
# CAS-CAL (1:20K)

Counties: Calaveras, Amador, Tuolumne  
 Flight date(s): 09-10-1962 to 11-18-1962  
 Scale: 1:20,000  
 Overlap: 60%

Complete Metadata:  
<http://www.library.ucsb.edu/map-imagery-lab/aerial-photography-information>

Note: Coverage includes Rancho Calaveras, Milton, San Andreas, Porter, and Arnold. Western 2/3 of county at 1:20,000. Eastern 1/3 of county at 1:15,840.

- MIL owns frame
- MIL does not own frame



0 1.5 3 6 Miles

Index to Aerial Photography  
 Page 4 of 15

Scale of this index: 1:84,500

Sources: Esri, HERE, DeLorme, Intermap, increment P Corp., GEBCO, USGS, FAO, NPS, NRCAN, GeoBase, IGN, Kadaster NL, Ordnance Survey, Esri Japan, METI, Esri China (Hong Kong), swiss topo, MapmyIndia, © OpenStreetMap contributors, and the GIS User Community

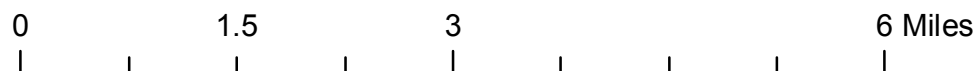
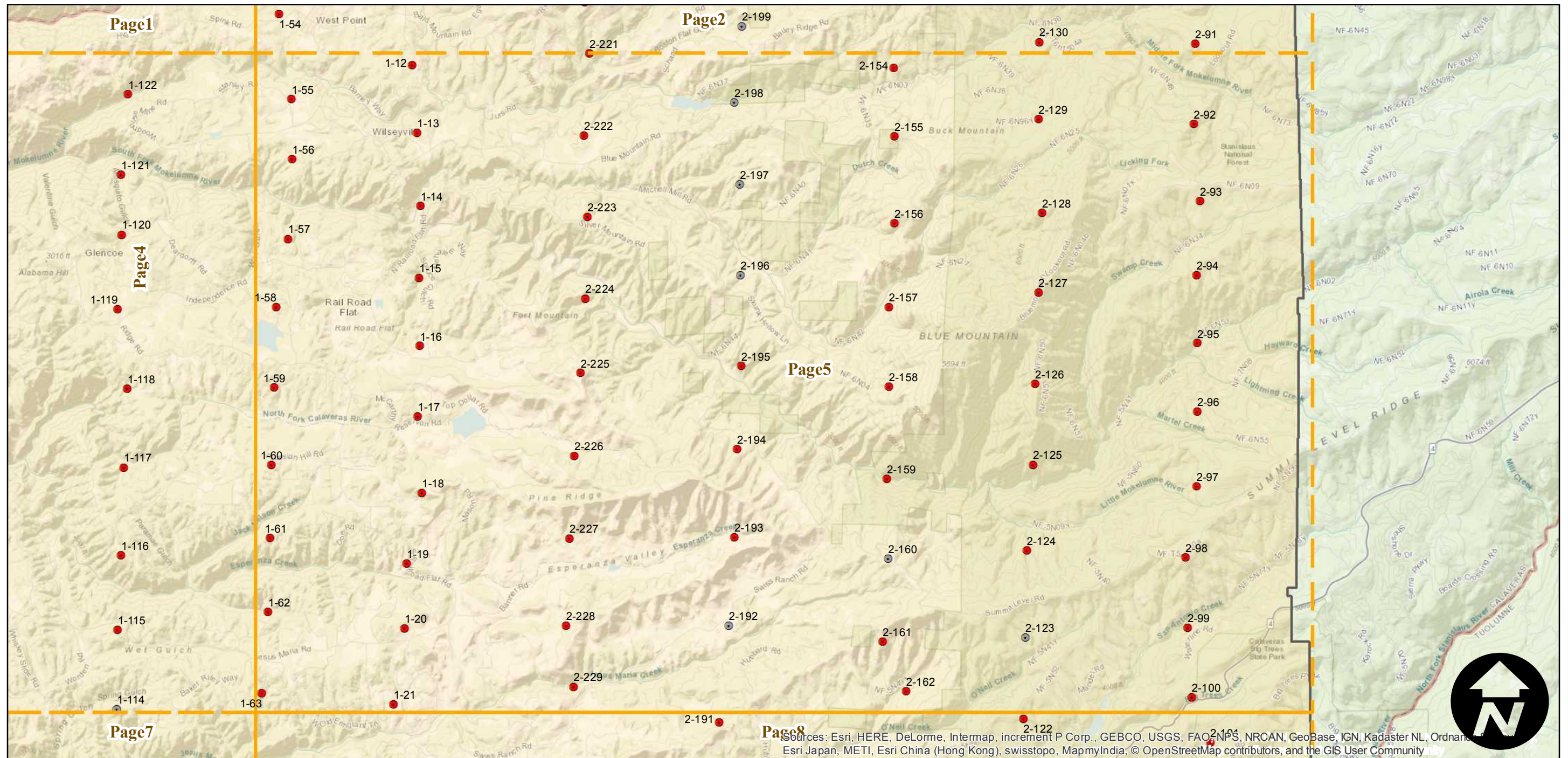
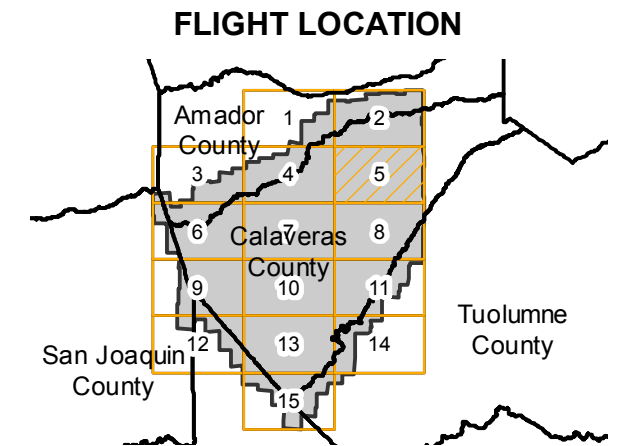
# CAS-CAL (1:20K)

Counties: Calaveras, Amador, Tuolumne  
 Flight date(s): 09-10-1962 to 11-18-1962  
 Scale: 1:20,000  
 Overlap: 60%

Complete Metadata:  
<http://www.library.ucsb.edu/map-imagery-lab/aerial-photography-information>

Note: Coverage includes Rancho Calaveras, Milton, San Andreas, Porter, and Arnold. Western 2/3 of county at 1:20,000. Eastern 1/3 of county at 1:15,840.

- MIL owns frame
- MIL does not own frame



Index to Aerial Photography  
 Page 5 of 15

Scale of this index: 1:84,500

Sources: Esri, HERE, DeLorme, Intermap, increment P Corp., GEBCO, USGS, FAO, NPS, NRCAN, GeoBase, IGN, Kadaster NL, Ordnance Survey, Esri Japan, METI, Esri China (Hong Kong), swisstopo, MapmyIndia, © OpenStreetMap contributors, and the GIS User Community

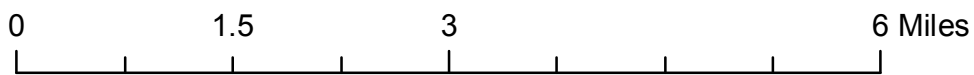
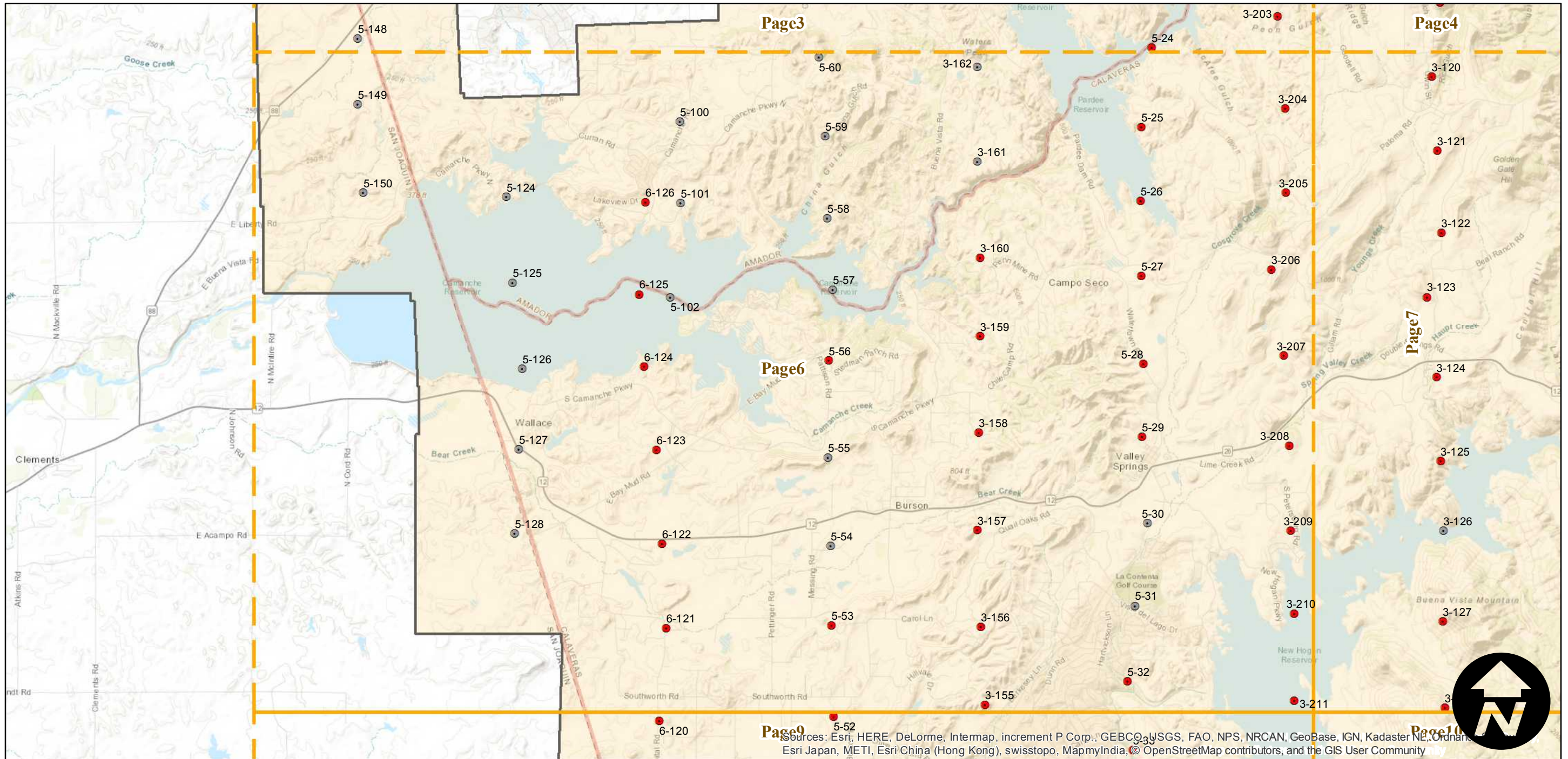
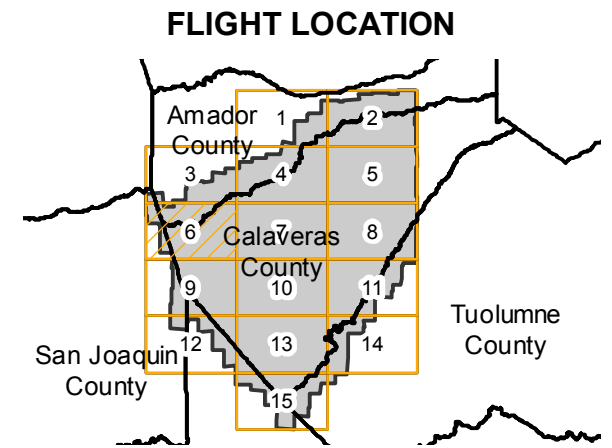
# CAS-CAL (1:20K)

Counties: Calaveras, Amador, Tuolumne  
 Flight date(s): 09-10-1962 to 11-18-1962  
 Scale: 1:20,000  
 Overlap: 60%

Complete Metadata:  
<http://www.library.ucsb.edu/map-imagery-lab/aerial-photography-information>

Note: Coverage includes Rancho Calaveras, Milton, San Andreas, Porter, and Arnold. Western 2/3 of county at 1:20,000. Eastern 1/3 of county at 1:15,840.

- MIL owns frame
- MIL does not own frame



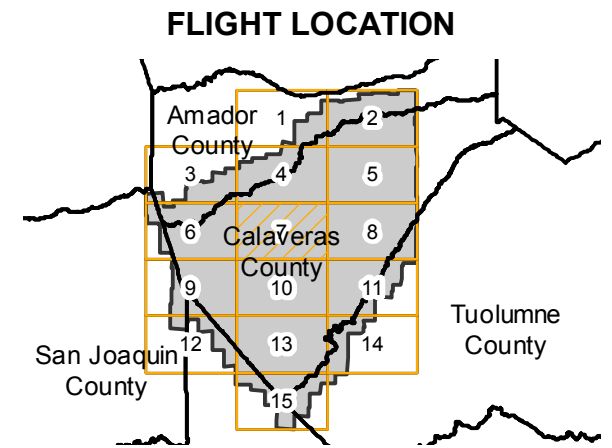
Sources: Esri, HERE, DeLorme, Intermap, increment P Corp., GEBCO, USGS, FAO, NPS, NRCAN, GeoBase, IGN, Kadaster NL, Ordnance Survey, Esri Japan, METI, Esri China (Hong Kong), swisstopo, MapmyIndia, © OpenStreetMap contributors, and the GIS User Community



# CAS-CAL (1:20K)

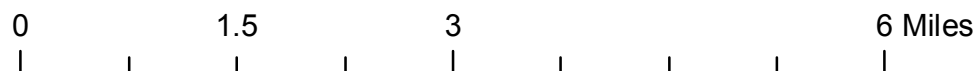
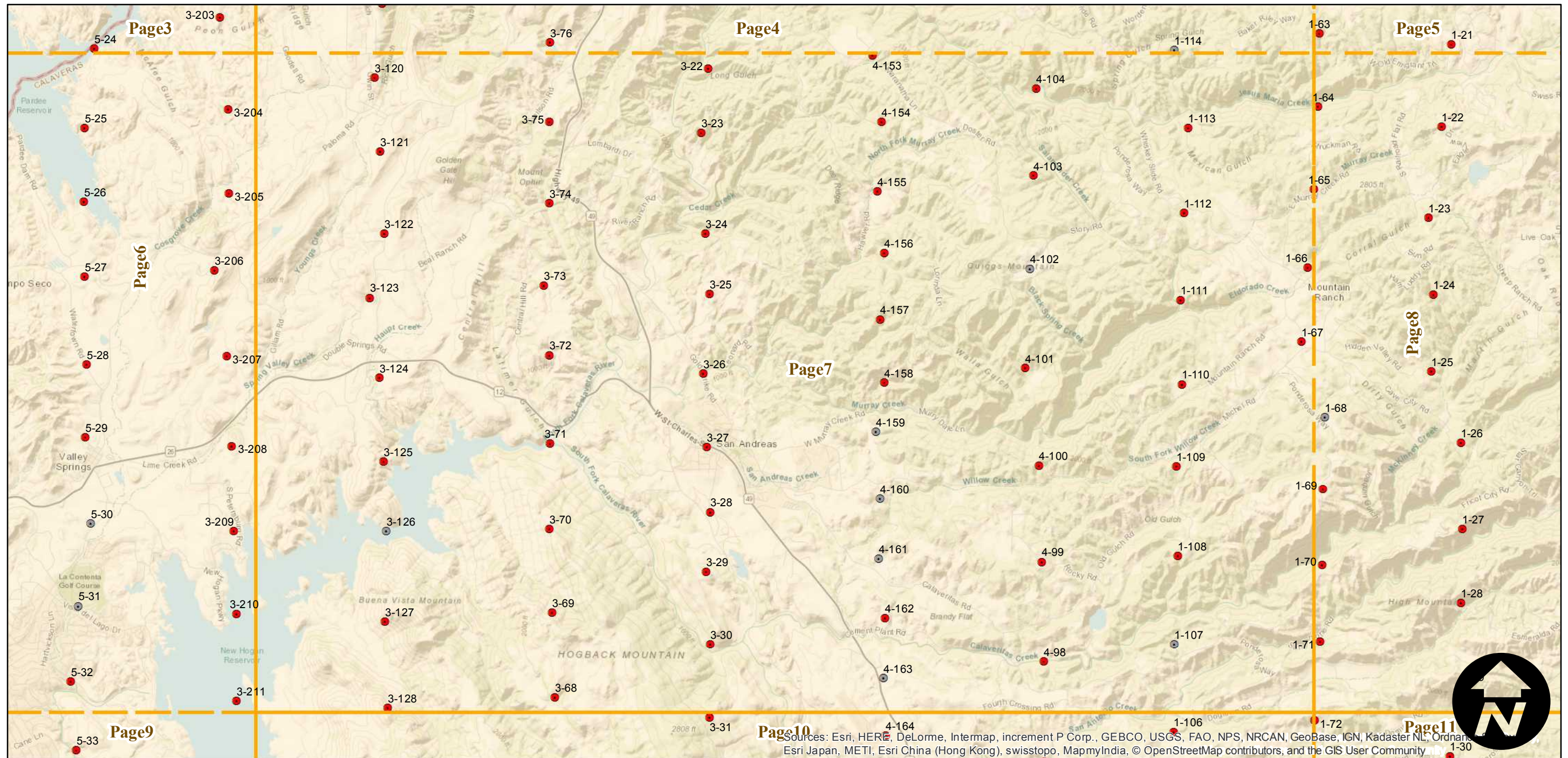
Counties: Calaveras, Amador, Tuolumne  
 Flight date(s): 09-10-1962 to 11-18-1962  
 Scale: 1:20,000  
 Overlap: 60%

Note: Coverage includes Rancho Calaveras, Milton, San Andreas, Porter, and Arnold. Western 2/3 of county at 1:20,000. Eastern 1/3 of county at 1:15,840.



Complete Metadata:  
<http://www.library.ucsb.edu/map-imagery-lab/aerial-photography-information>

- MIL owns frame
- MIL does not own frame



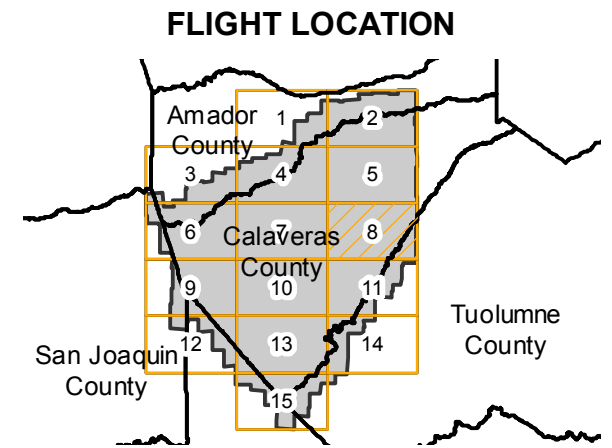
Sources: Esri, HERE, DeLorme, Intermap, increment P Corp., GEBCO, USGS, FAO, NPS, NRCAN, GeoBase, IGN, Kadaster NL, Ordnance Survey, Esri Japan, METI, Esri China (Hong Kong), swisstopo, MapmyIndia, © OpenStreetMap contributors, and the GIS User Community



# CAS-CAL (1:20K)

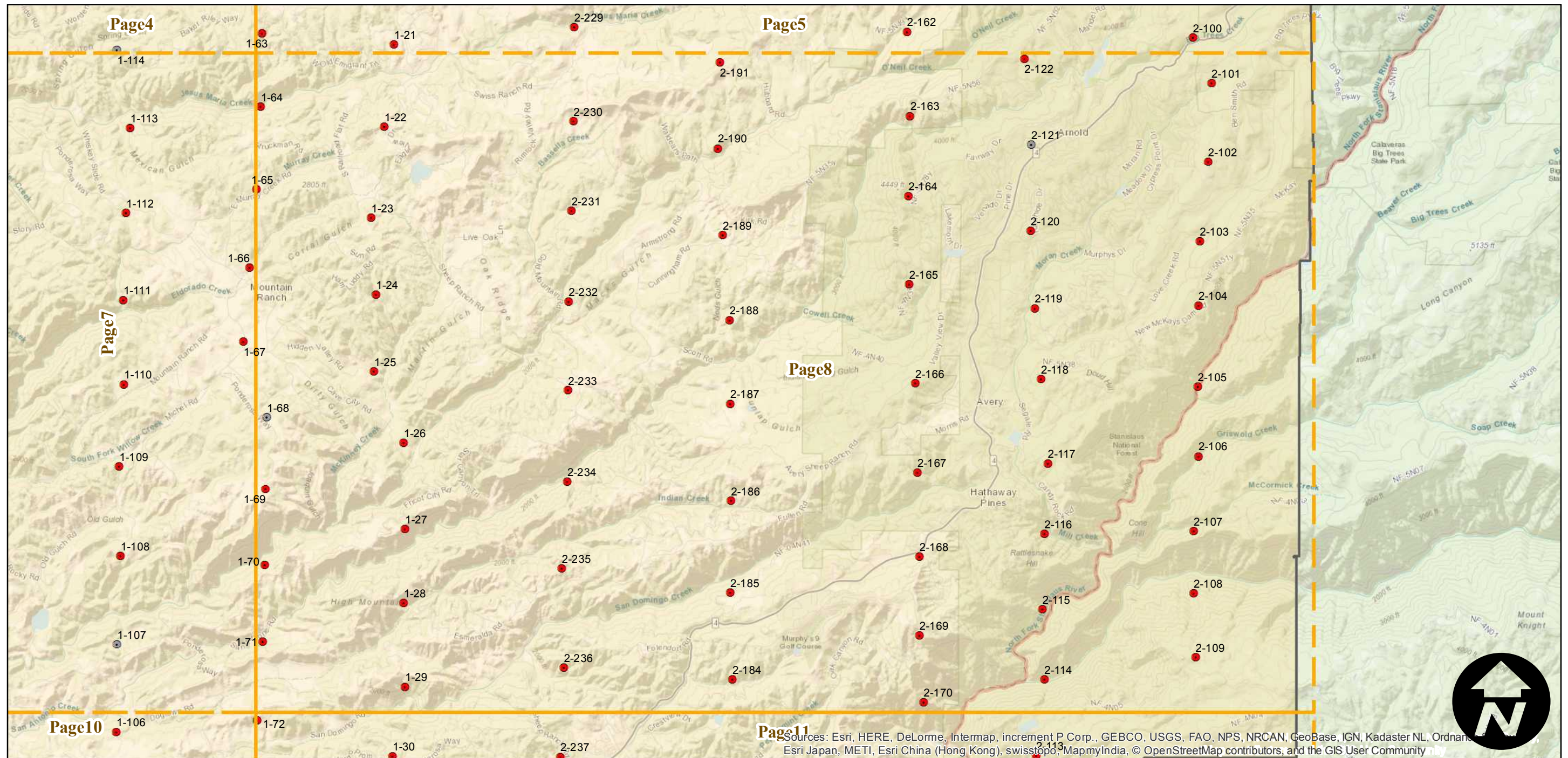
Counties: Calaveras, Amador, Tuolumne  
 Flight date(s): 09-10-1962 to 11-18-1962  
 Scale: 1:20,000  
 Overlap: 60%

Note: Coverage includes Rancho Calaveras, Milton, San Andreas, Porter, and Arnold. Western 2/3 of county at 1:20,000. Eastern 1/3 of county at 1:15,840.



Complete Metadata:  
<http://www.library.ucsb.edu/map-imagery-lab/aerial-photography-information>

- MIL owns frame
- MIL does not own frame



0 1.5 3 6 Miles

Index to Aerial Photography  
 Page 8 of 15

Scale of this index: 1:84,500

Sources: Esri, HERE, DeLorme, Intermap, increment P Corp., GEBCO, USGS, FAO, NRCAN, GeoBase, IGN, Kadaster NL, Ordnance Survey, Esri Japan, METI, Esri China (Hong Kong), swisstopo, MapmyIndia, © OpenStreetMap contributors, and the GIS User Community

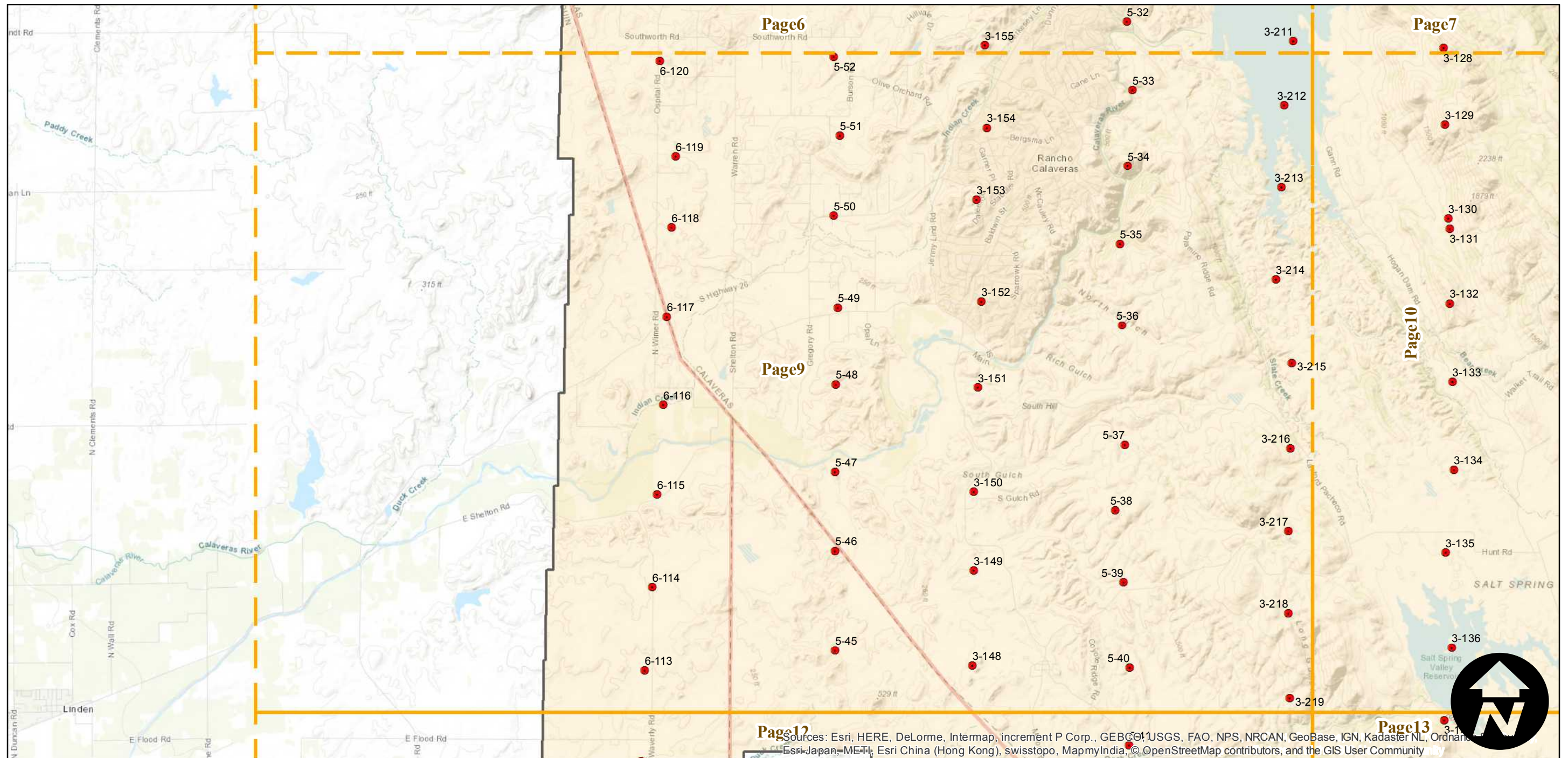
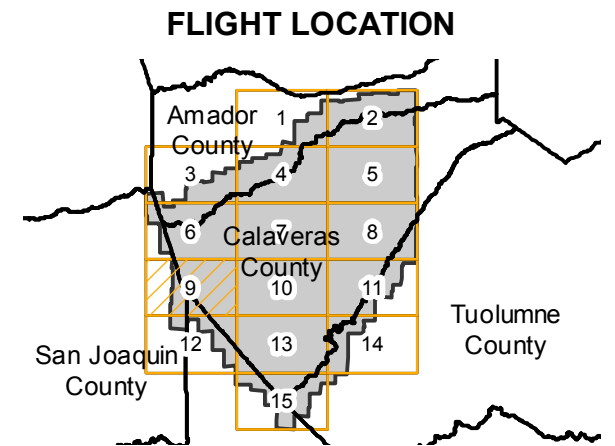
# CAS-CAL (1:20K)

Counties: Calaveras, Amador, Tuolumne  
 Flight date(s): 09-10-1962 to 11-18-1962  
 Scale: 1:20,000  
 Overlap: 60%

Complete Metadata:  
<http://www.library.ucsb.edu/map-imagery-lab/aerial-photography-information>

Note: Coverage includes Rancho Calaveras, Milton, San Andreas, Porter, and Arnold. Western 2/3 of county at 1:20,000. Eastern 1/3 of county at 1:15,840.

- MIL owns frame
- MIL does not own frame



0 1.5 3 6 Miles

Index to Aerial Photography  
 Page 9 of 15

Scale of this index: 1:84,500

Sources: Esri, HERE, DeLorme, Intermap, increment P Corp., GEBCO, USGS, FAO, NPS, NRCAN, GeoBase, IGN, Kadaster NL, Ordnance Survey, Esri Japan, METI, Esri China (Hong Kong), swisstopo, MapmyIndia, © OpenStreetMap contributors, and the GIS User Community

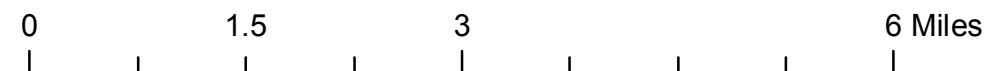
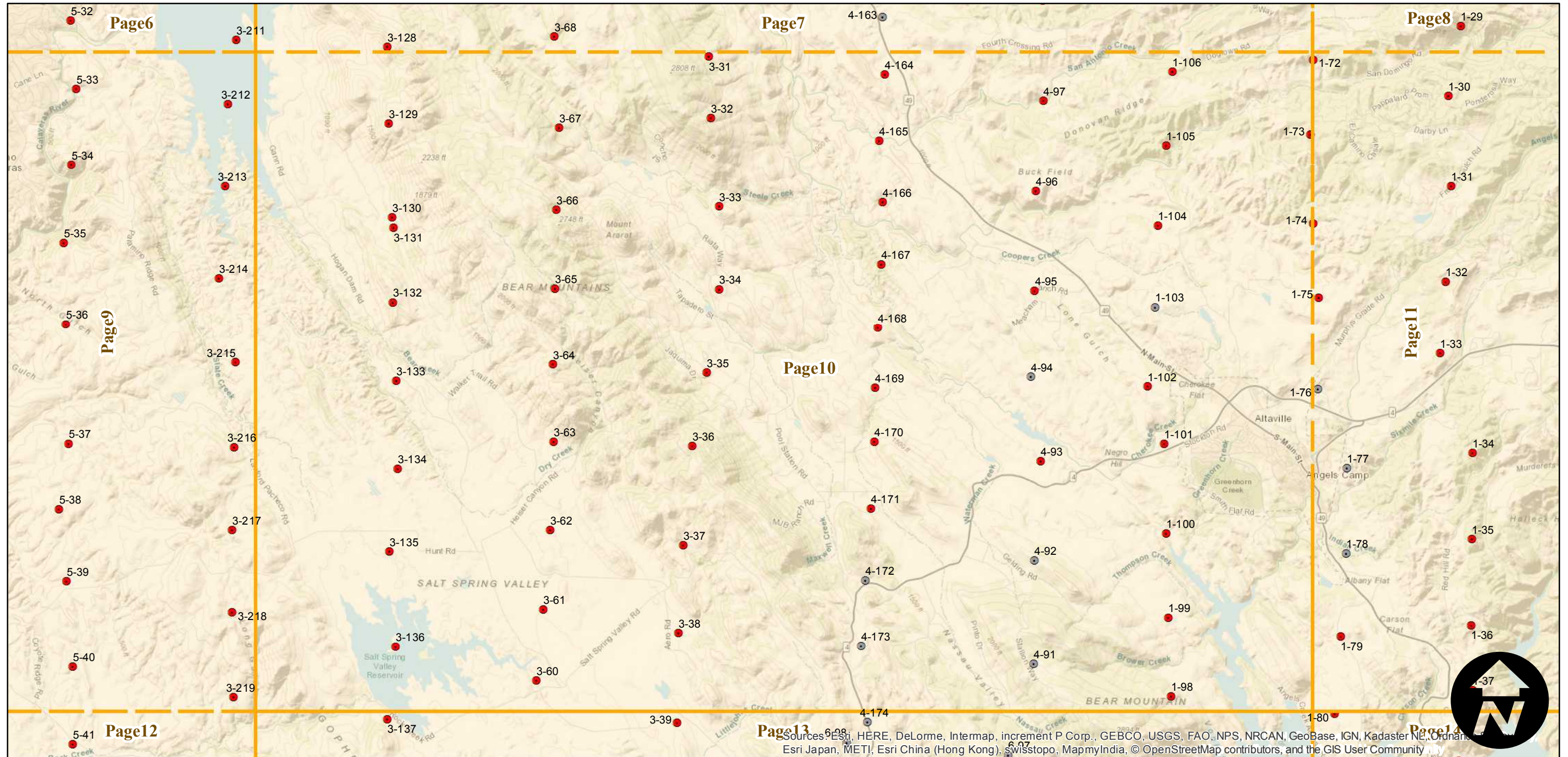
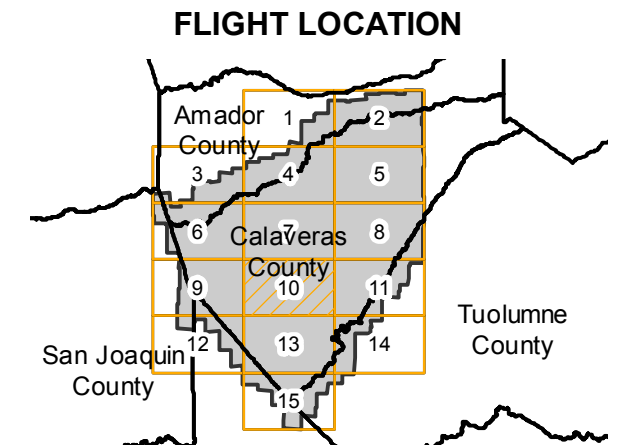
# CAS-CAL (1:20K)

Counties: Calaveras, Amador, Tuolumne  
 Flight date(s): 09-10-1962 to 11-18-1962  
 Scale: 1:20,000  
 Overlap: 60%

Note: Coverage includes Rancho Calaveras, Milton, San Andreas, Porter, and Arnold. Western 2/3 of county at 1:20,000. Eastern 1/3 of county at 1:15,840.

Complete Metadata:  
<http://www.library.ucsb.edu/map-imagery-lab/aerial-photography-information>

- MIL owns frame
- MIL does not own frame



Sources: Esri, HERE, DeLorme, Intermap, increment P Corp., GEBCO, USGS, FAO, NPS, NRCAN, GeoBase, IGN, Kadaster NL, Ordnance Survey, Esri Japan, METI, Esri China (Hong Kong), Swisstopo, MapmyIndia, © OpenStreetMap contributors, and the GIS User Community



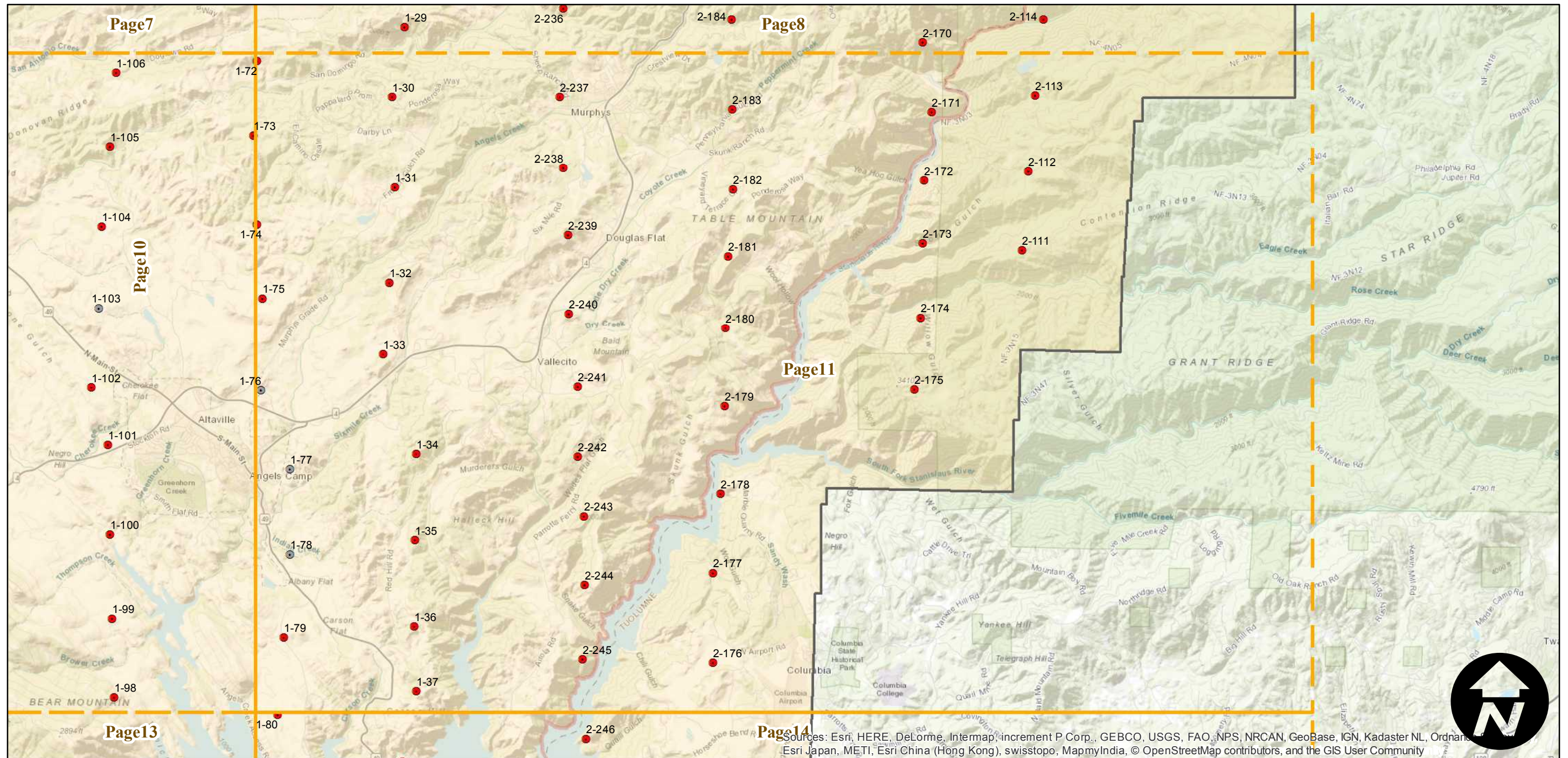
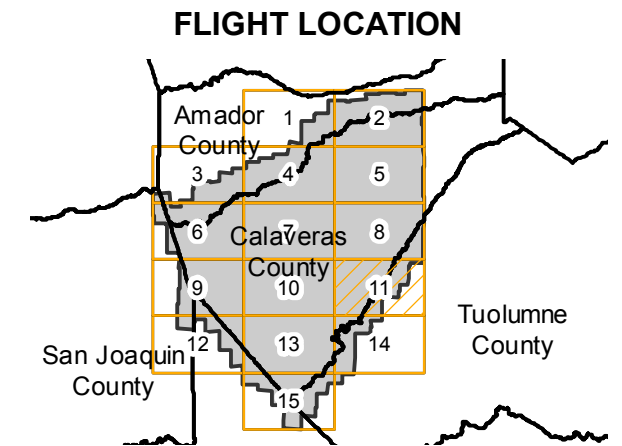
# CAS-CAL (1:20K)

Counties: Calaveras, Amador, Tuolumne  
 Flight date(s): 09-10-1962 to 11-18-1962  
 Scale: 1:20,000  
 Overlap: 60%

Note: Coverage includes Rancho Calaveras, Milton, San Andreas, Porter, and Arnold. Western 2/3 of county at 1:20,000. Eastern 1/3 of county at 1:15,840.

Complete Metadata:  
<http://www.library.ucsb.edu/map-imagery-lab/aerial-photography-information>

- MIL owns frame
- MIL does not own frame



0 1.5 3 6 Miles

Index to Aerial Photography  
 Page 11 of 15

Scale of this index: 1:84,500

Sources: Esri, HERE, DeLorme, Intermap, increment P Corp., GEBCO, USGS, FAO, NPS, NRCAN, GeoBase, IGN, Kadaster NL, Ordnance Survey, Esri Japan, METI, Esri China (Hong Kong), swisstopo, MapmyIndia, © OpenStreetMap contributors, and the GIS User Community

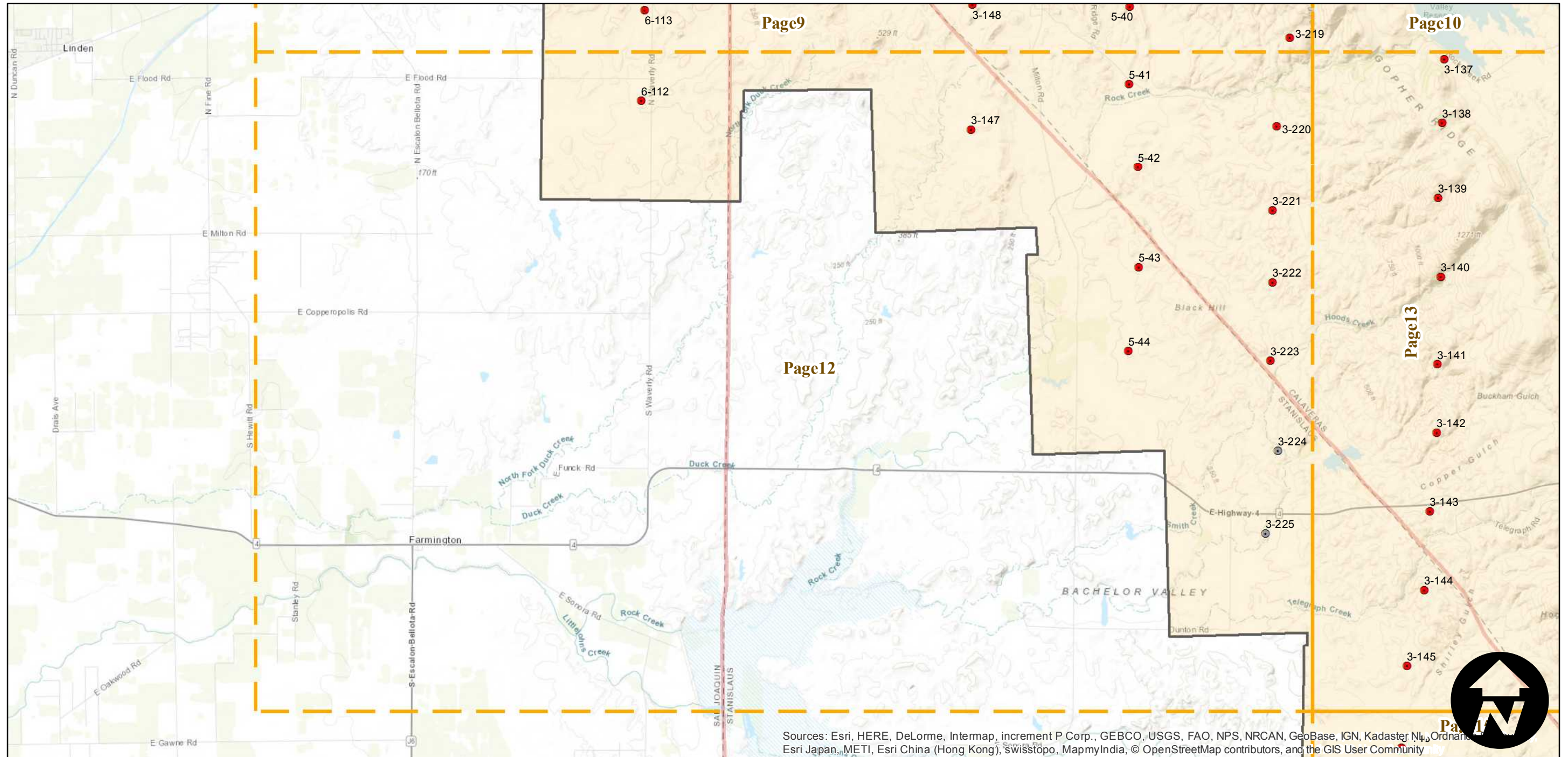
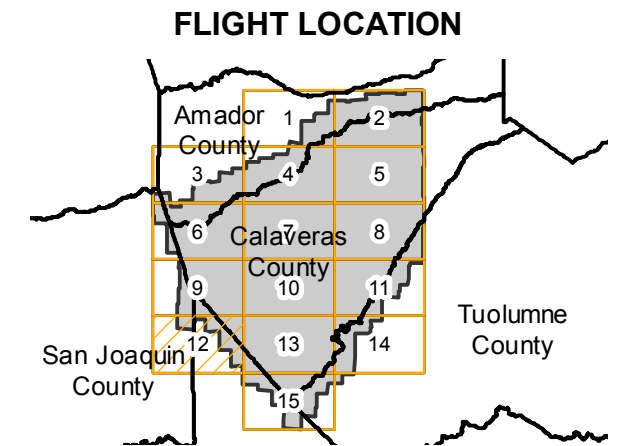
# CAS-CAL (1:20K)

Counties: Calaveras, Amador, Tuolumne  
 Flight date(s): 09-10-1962 to 11-18-1962  
 Scale: 1:20,000  
 Overlap: 60%

Complete Metadata:  
<http://www.library.ucsb.edu/map-imagery-lab/aerial-photography-information>

Note: Coverage includes Rancho Calaveras, Milton, San Andreas, Porter, and Arnold. Western 2/3 of county at 1:20,000. Eastern 1/3 of county at 1:15,840.

- MIL owns frame
- MIL does not own frame



Sources: Esri, HERE, DeLorme, Intermap, increment P Corp., GEBCO, USGS, FAO, NPS, NRCAN, GeoBase, IGN, Kadaster NL, Ordnance Survey, Esri Japan, METI, Esri China (Hong Kong), swisstopo, MapmyIndia, © OpenStreetMap contributors, and the GIS User Community

0 1.5 3 6 Miles

Index to Aerial Photography  
 Page 12 of 15

Scale of this index: 1:84,500

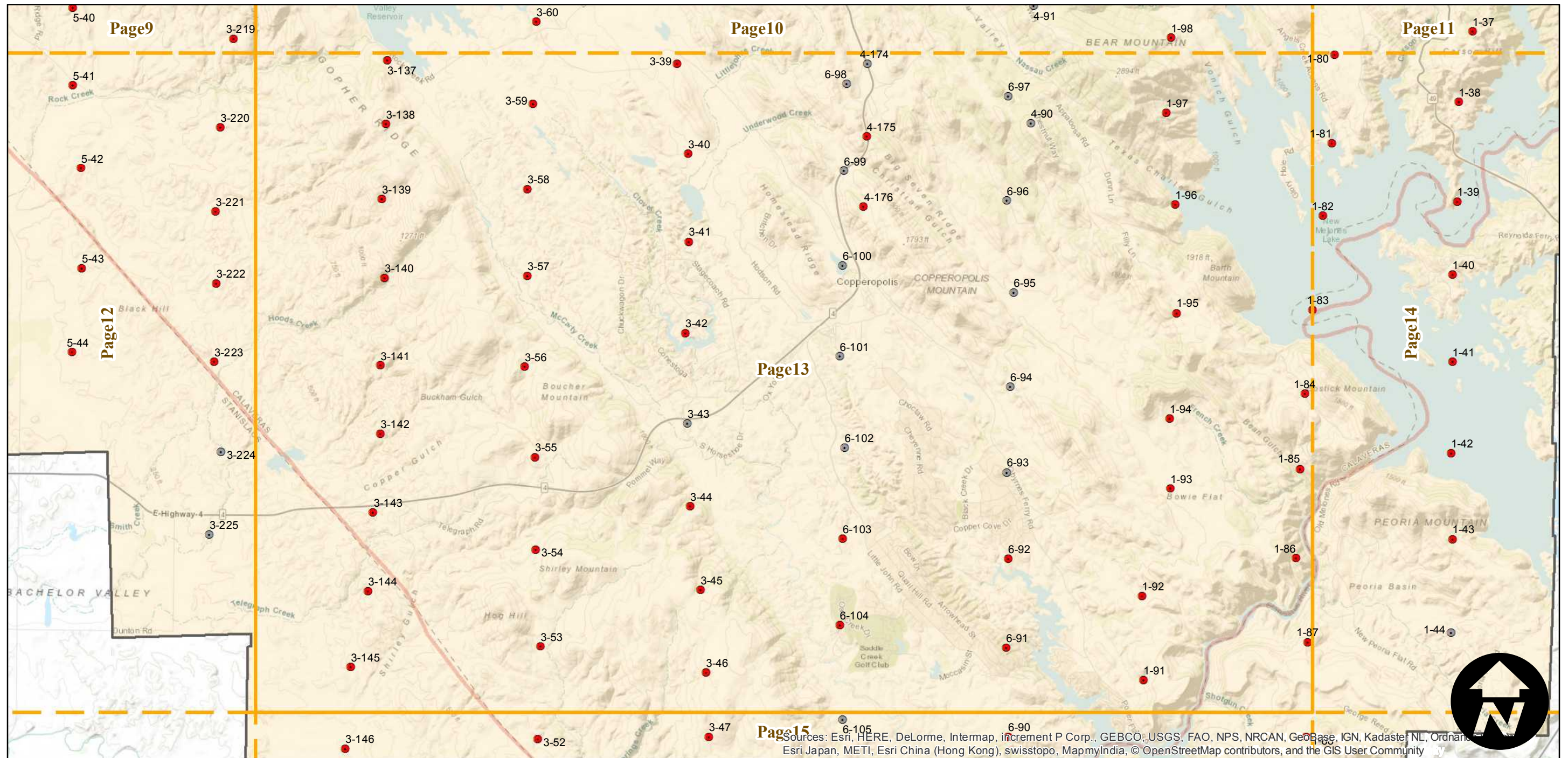
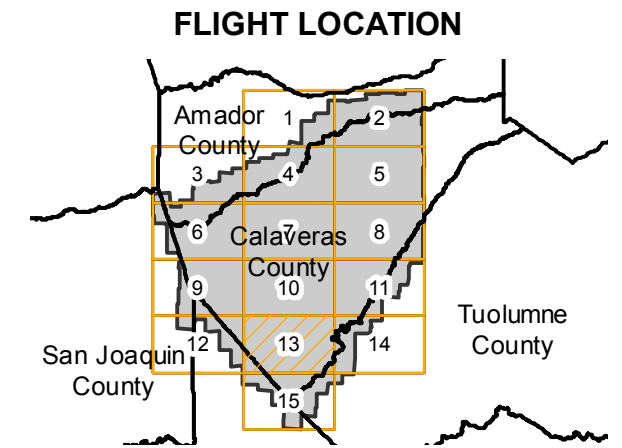
# CAS-CAL (1:20K)

Counties: Calaveras, Amador, Tuolumne  
 Flight date(s): 09-10-1962 to 11-18-1962  
 Scale: 1:20,000  
 Overlap: 60%

Complete Metadata:  
<http://www.library.ucsb.edu/map-imagery-lab/aerial-photography-information>

Note: Coverage includes Rancho Calaveras, Milton, San Andreas, Porter, and Arnold. Western 2/3 of county at 1:20,000. Eastern 1/3 of county at 1:15,840.

- MIL owns frame
- MIL does not own frame



Sources: Esri, HERE, DeLorme, Intermap, increment P Corp., GEBCO, USGS, FAO, NPS, NRCAN, Geobase, IGN, Kadaster NL, Ordnance Survey, Esri Japan, METI, Esri China (Hong Kong), swisstopo, MapmyIndia, © OpenStreetMap contributors, and the GIS User Community

0 1.5 3 6 Miles

Index to Aerial Photography  
 Page 13 of 15

Scale of this index: 1:84,500

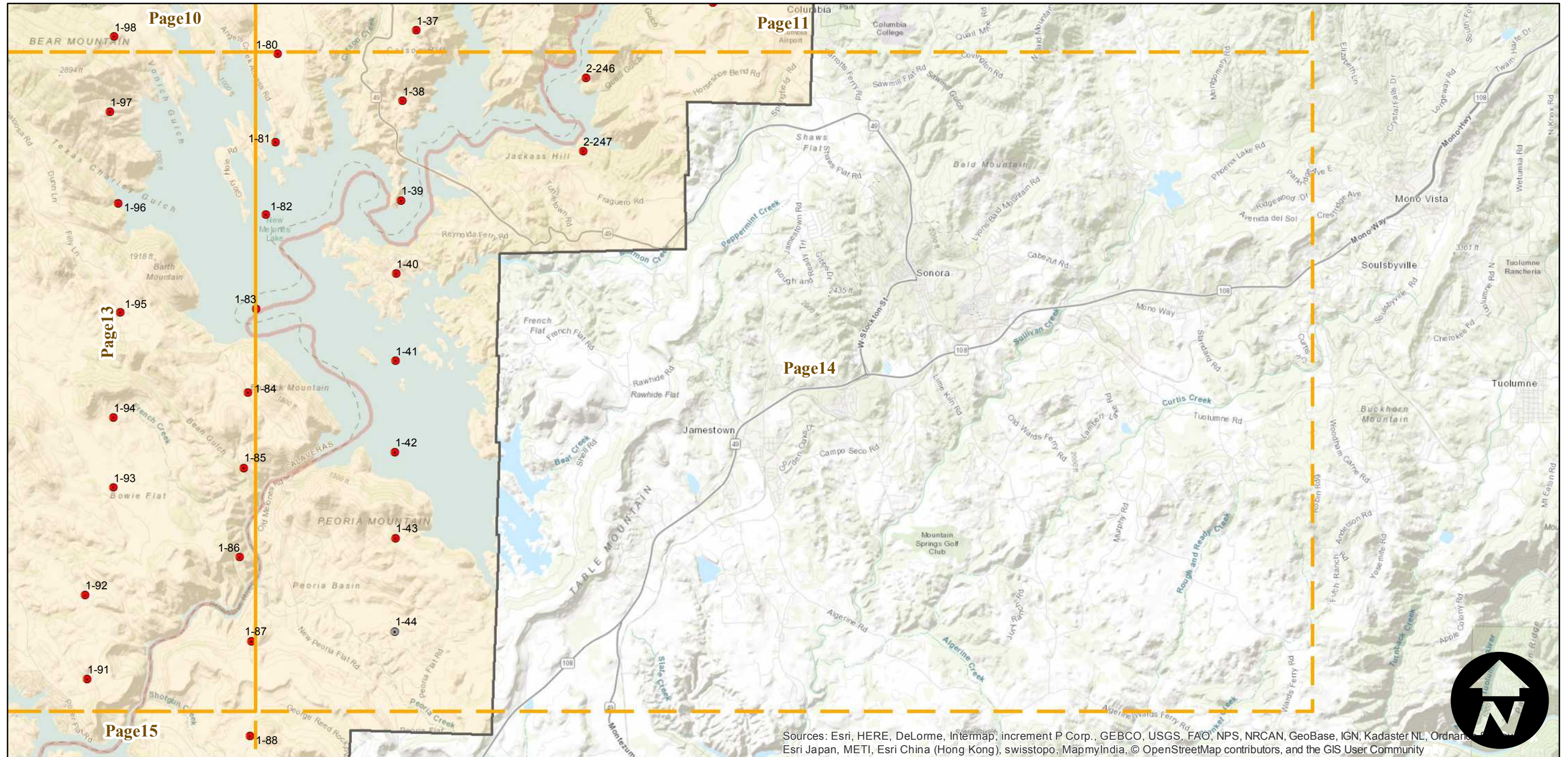
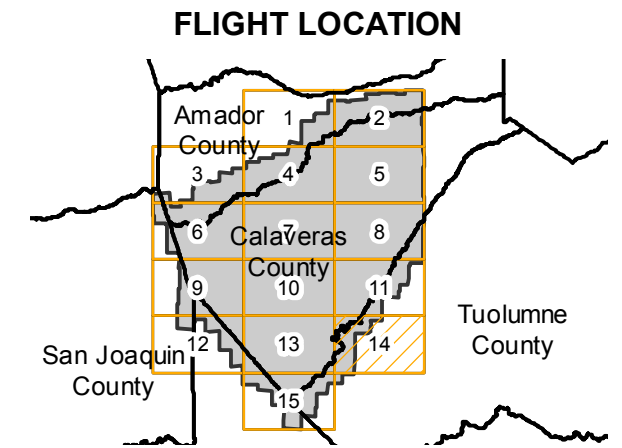
# CAS-CAL (1:20K)

Counties: Calaveras, Amador, Tuolumne  
 Flight date(s): 09-10-1962 to 11-18-1962  
 Scale: 1:20,000  
 Overlap: 60%

Complete Metadata:  
<http://www.library.ucsb.edu/map-imagery-lab/aerial-photography-information>

Note: Coverage includes Rancho Calaveras, Milton, San Andreas, Porter, and Arnold. Western 2/3 of county at 1:20,000. Eastern 1/3 of county at 1:15,840.

- MIL owns frame
- MIL does not own frame



Sources: Esri, HERE, DeLorme, Intermap, increment P Corp., GEBCO, USGS, FAO, NRCAN, GeoBase, IGN, Kadaster NL, Ordnance Survey, Esri Japan, METI, Esri China (Hong Kong), swisstopo, MapmyIndia, © OpenStreetMap contributors, and the GIS User Community

0 1.5 3 6 Miles

Index to Aerial Photography  
 Page 14 of 15

Scale of this index: 1:84,500

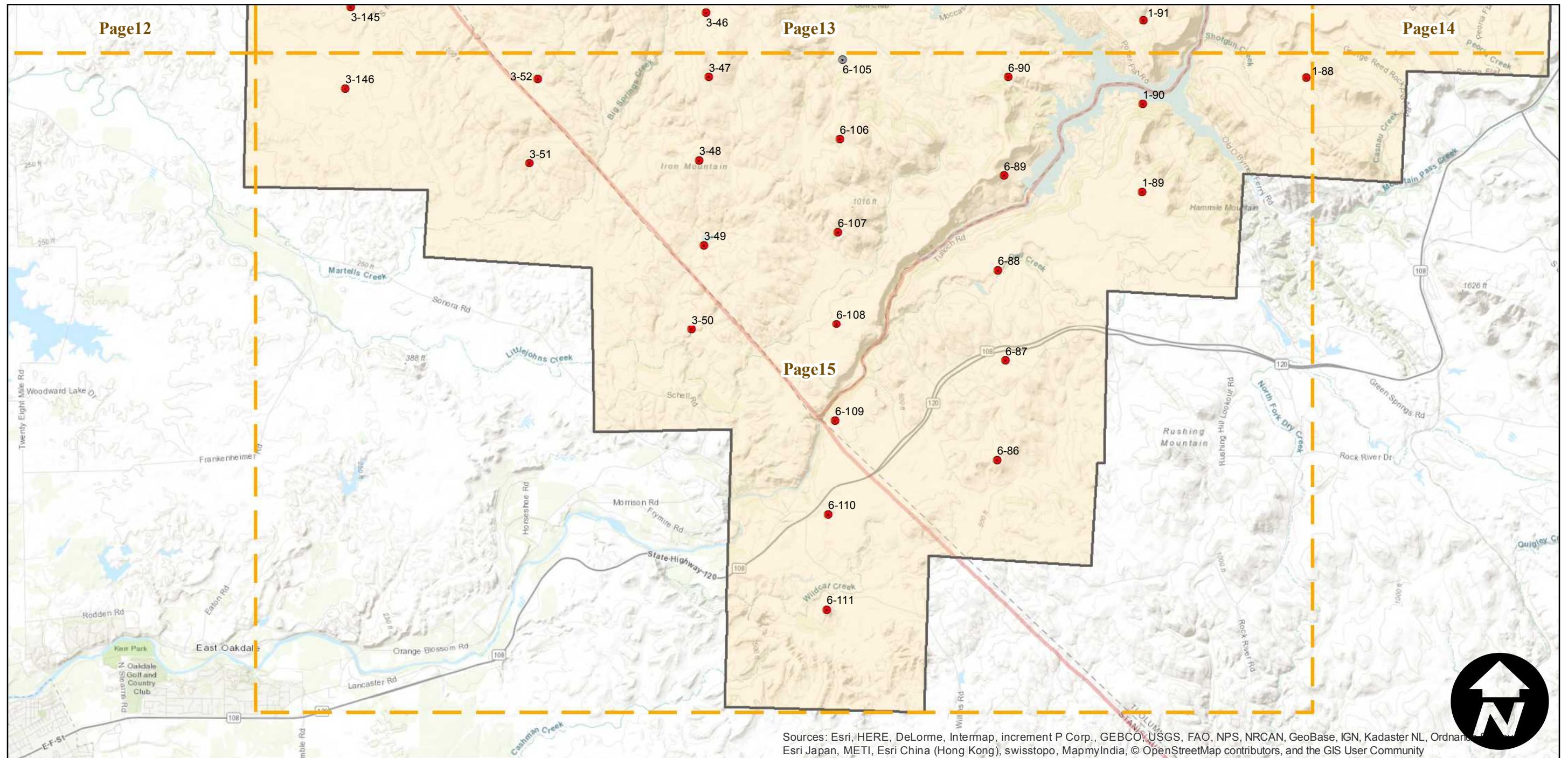
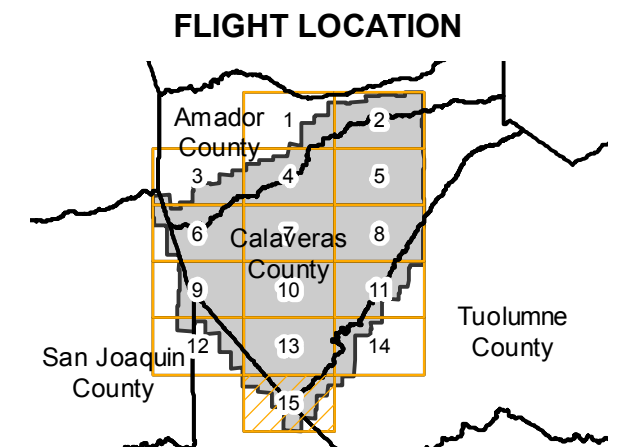
# CAS-CAL (1:20K)

Counties: Calaveras, Amador, Tuolumne  
 Flight date(s): 09-10-1962 to 11-18-1962  
 Scale: 1:20,000  
 Overlap: 60%

Complete Metadata:  
<http://www.library.ucsb.edu/map-imagery-lab/aerial-photography-information>

Note: Coverage includes Rancho Calaveras, Milton, San Andreas, Porter, and Arnold. Western 2/3 of county at 1:20,000. Eastern 1/3 of county at 1:15,840.

- MIL owns frame
- MIL does not own frame



Sources: Esri, HERE, DeLorme, Intermap, increment P Corp., GEBCO, USGS, FAO, NPS, NRCAN, GeoBase, IGN, Kadaster NL, Ordnance Survey, Esri Japan, METI, Esri China (Hong Kong), swisstopo, MapmyIndia, © OpenStreetMap contributors, and the GIS User Community

0 1.5 3 6 Miles

Index to Aerial Photography  
 Page 15 of 15

Scale of this index: 1:84,500