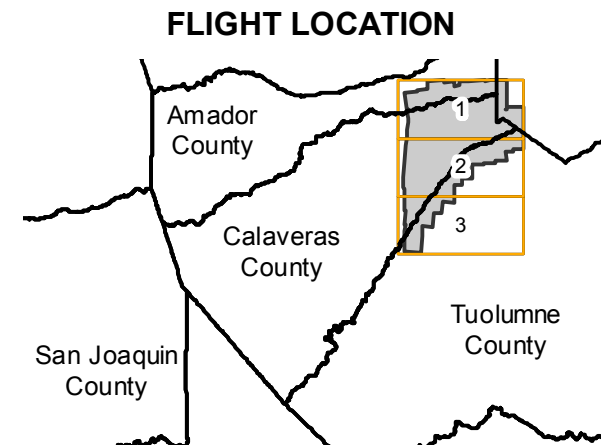


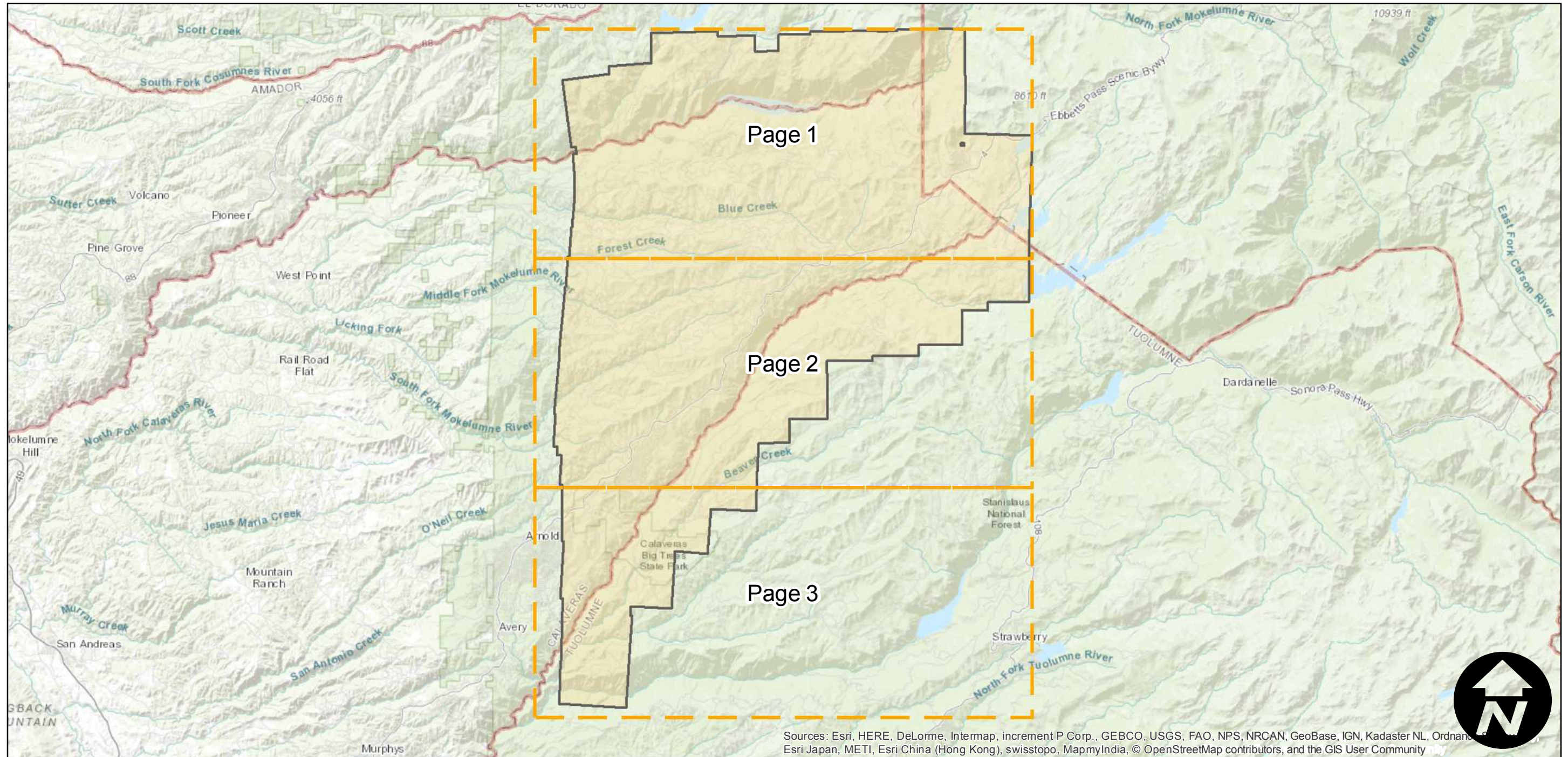
# CAS-CAL (1:15K)

Counties: Calaveras, Alpine, Amador, Tuolumne  
Flight date(s): 09-10-1962 to 11-18-1962  
Scale: 1:15,840  
Overlap: 60%

Note: Coverage includes Rancho Calaveras, Milton, San Andreas, Porter, and Arnold. Western 2/3 of county at 1:20,000. Eastern 1/3 of county at 1:15,840.



Complete Metadata:  
<http://www.library.ucsb.edu/map-imagery-lab/aerial-photography-information>



Sources: Esri, HERE, DeLorme, Intermap, increment P Corp., GEBCO, USGS, FAO, NPS, NRCAN, GeoBase, IGN, Kadaster NL, Ordnance Survey, Esri Japan, METI, Esri China (Hong Kong), swisstopo, MapmyIndia, © OpenStreetMap contributors, and the GIS User Community

0 4 8 16 Miles

Index to Aerial Photography  
Page Key

Scale of this index: 1:250,000

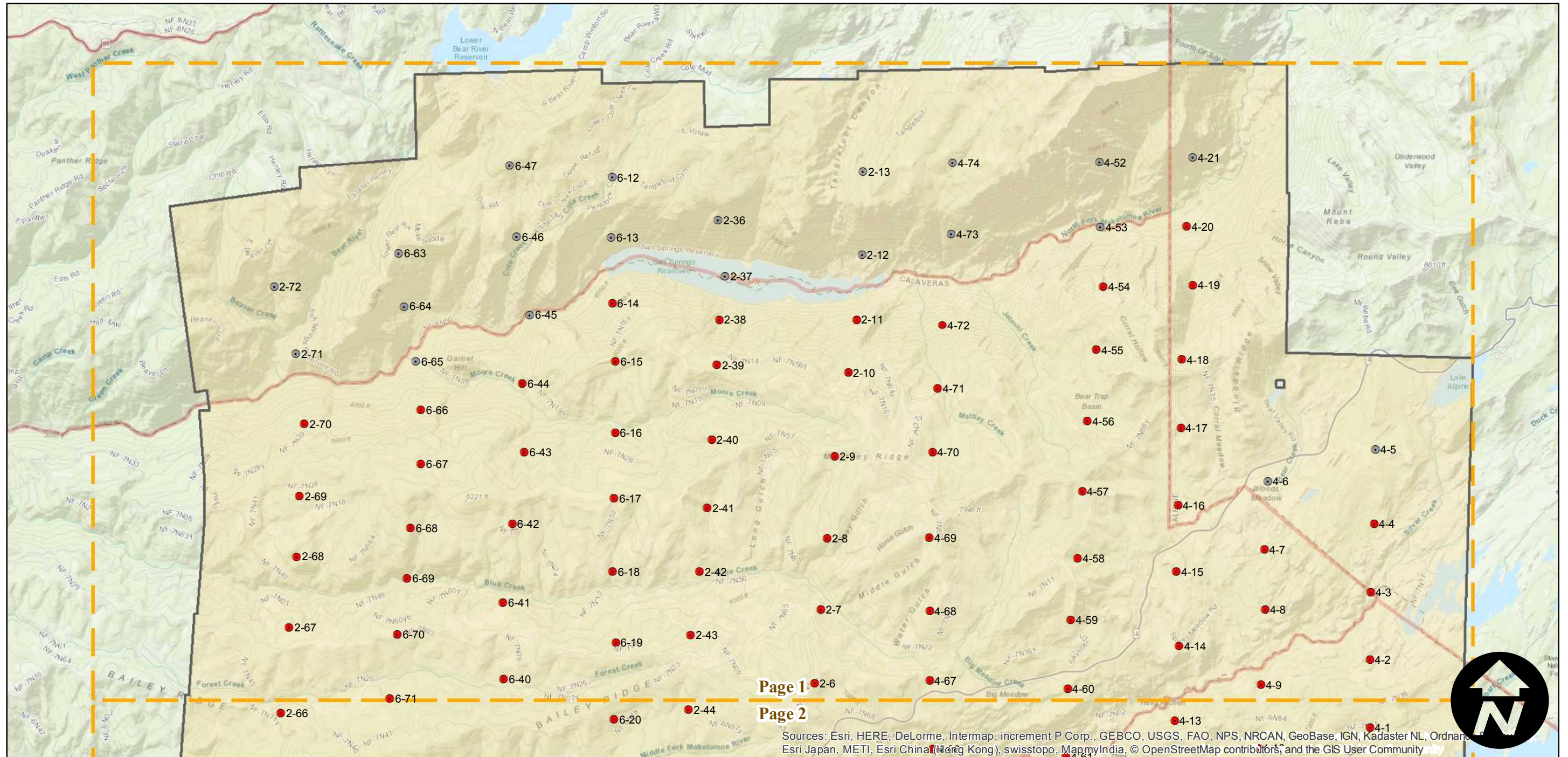
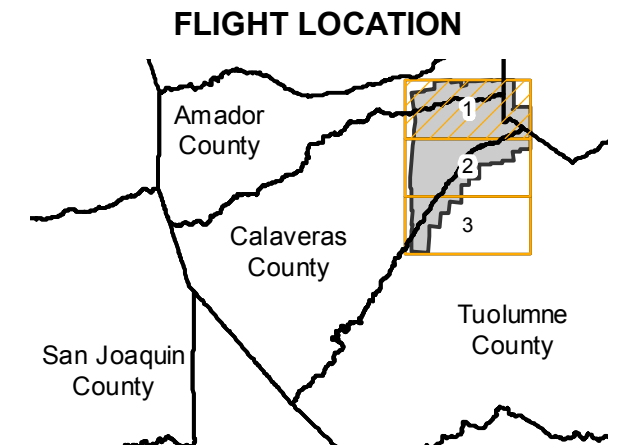
# CAS-CAL (1:15K)

Counties: Calaveras, Alpine, Amador, Tuolumne  
 Flight date(s): 09-10-1962 to 11-18-1962  
 Scale: 1:15,840  
 Overlap: 60%

Complete Metadata:  
<http://www.library.ucsb.edu/map-imagery-lab/aerial-photography-information>

Note: Coverage includes Rancho Calaveras, Milton, San Andreas, Porter, and Arnold. Western 2/3 of county at 1:20,000. Eastern 1/3 of county at 1:15,840.

- MIL owns frame
- MIL does not own frame



Page 1

Page 2

Sources: Esri, HERE, DeLorme, Intermap, increment P Corp., GEBCO, USGS, FAO, NPS, NRCAN, GeoBase, IGN, Kadaster NL, Ordnance Survey, Esri Japan, METI, Esri China (Hong Kong), swisstopo, MapmyIndia, © OpenStreetMap contributors, and the GIS User Community

0 1.5 3 6 Miles

Index to Aerial Photography  
 Page 1 of 3

Scale of this index: 1:90,000

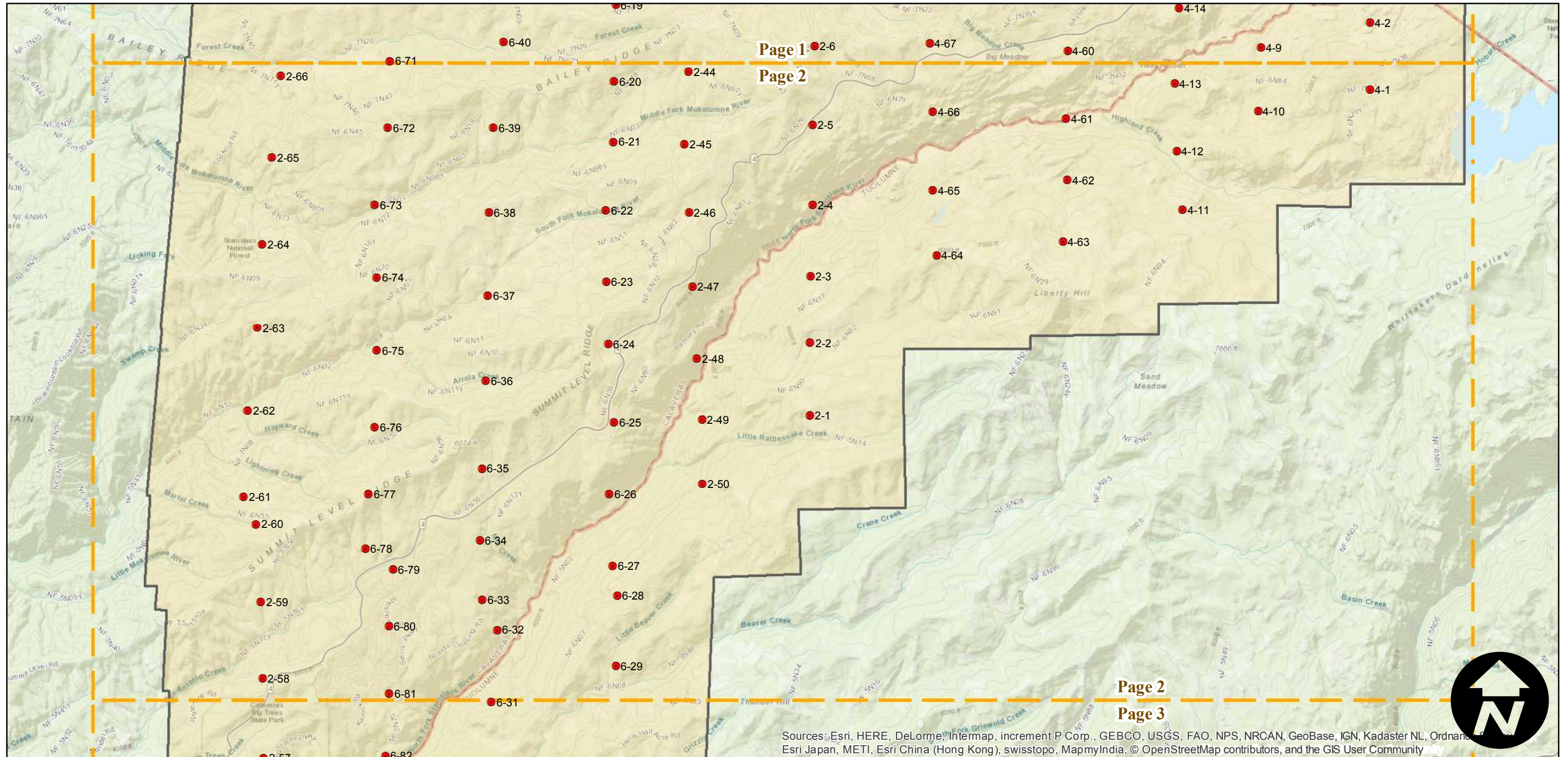
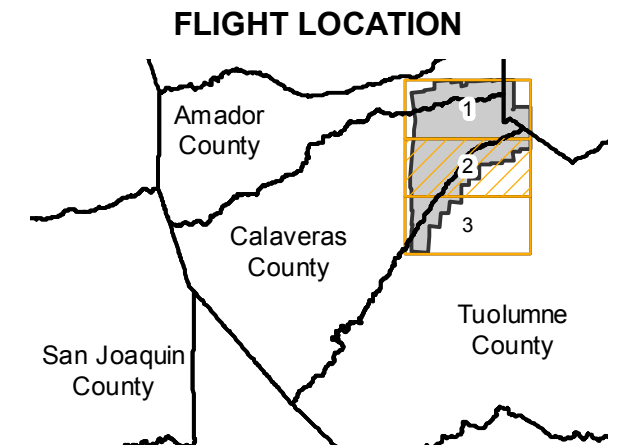
# CAS-CAL (1:15K)

Counties: Calaveras, Alpine, Amador, Tuolumne  
 Flight date(s): 09-10-1962 to 11-18-1962  
 Scale: 1:15,840  
 Overlap: 60%

Complete Metadata:  
<http://www.library.ucsb.edu/map-imagery-lab/aerial-photography-information>

Note: Coverage includes Rancho Calaveras, Milton, San Andreas, Porter, and Arnold. Western 2/3 of county at 1:20,000. Eastern 1/3 of county at 1:15,840.

- MIL owns frame
- MIL does not own frame



0 1.5 3 6 Miles

Index to Aerial Photography  
 Page 2 of 3

Scale of this index: 1:90,000

Sources: Esri, HERE, DeLorme, Intermap, increment P Corp., GEBCO, USGS, FAO, NPS, NRCAN, GeoBase, IGN, Kadaster NL, Ordnance Survey, Esri Japan, METI, Esri China (Hong Kong), swisstopo, MapmyIndia, © OpenStreetMap contributors, and the GIS User Community

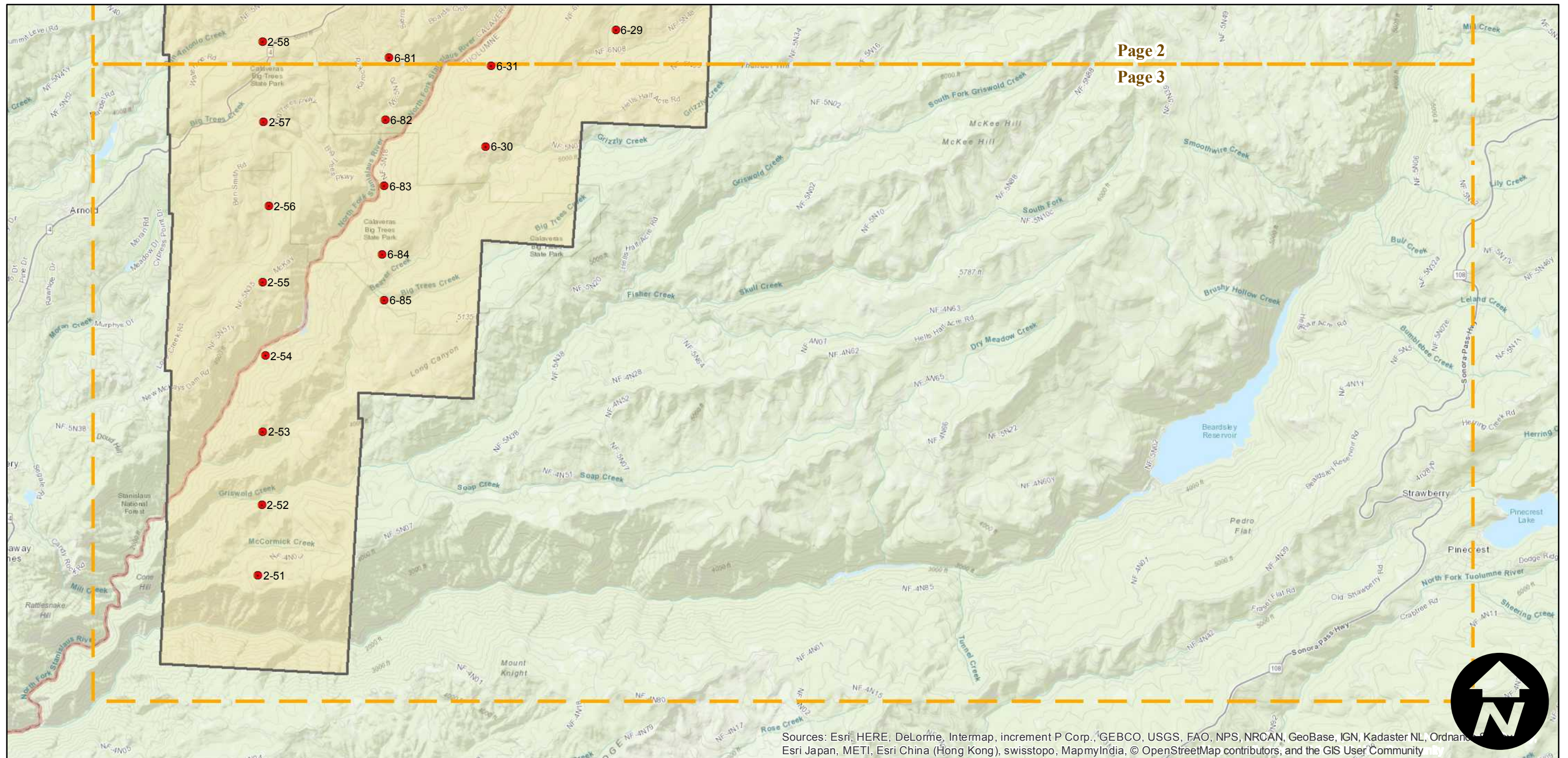
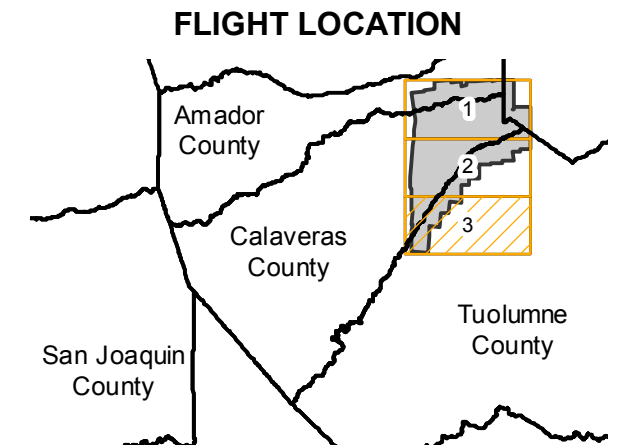
# CAS-CAL (1:15K)

Counties: Calaveras, Alpine, Amador, Tuolumne  
 Flight date(s): 09-10-1962 to 11-18-1962  
 Scale: 1:15,840  
 Overlap: 60%

Complete Metadata:  
<http://www.library.ucsb.edu/map-imagery-lab/aerial-photography-information>

Note: Coverage includes Rancho Calaveras, Milton, San Andreas, Porter, and Arnold. Western 2/3 of county at 1:20,000. Eastern 1/3 of county at 1:15,840.

- MIL owns frame
- MIL does not own frame



0 1.5 3 6 Miles

Index to Aerial Photography  
 Page 3 of 3

Scale of this index: 1:90,000

Sources: Esri, HERE, DeLorme, Intermap, increment P Corp., GEBCO, USGS, FAO, NPS, NRCAN, GeoBase, IGN, Kadaster NL, Ordnance Survey, Esri Japan, METI, Esri China (Hong Kong), swisstopo, MapmyIndia, © OpenStreetMap contributors, and the GIS User Community