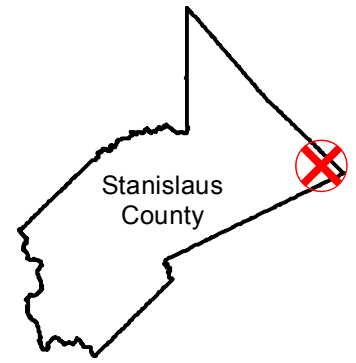


# CAS-1835

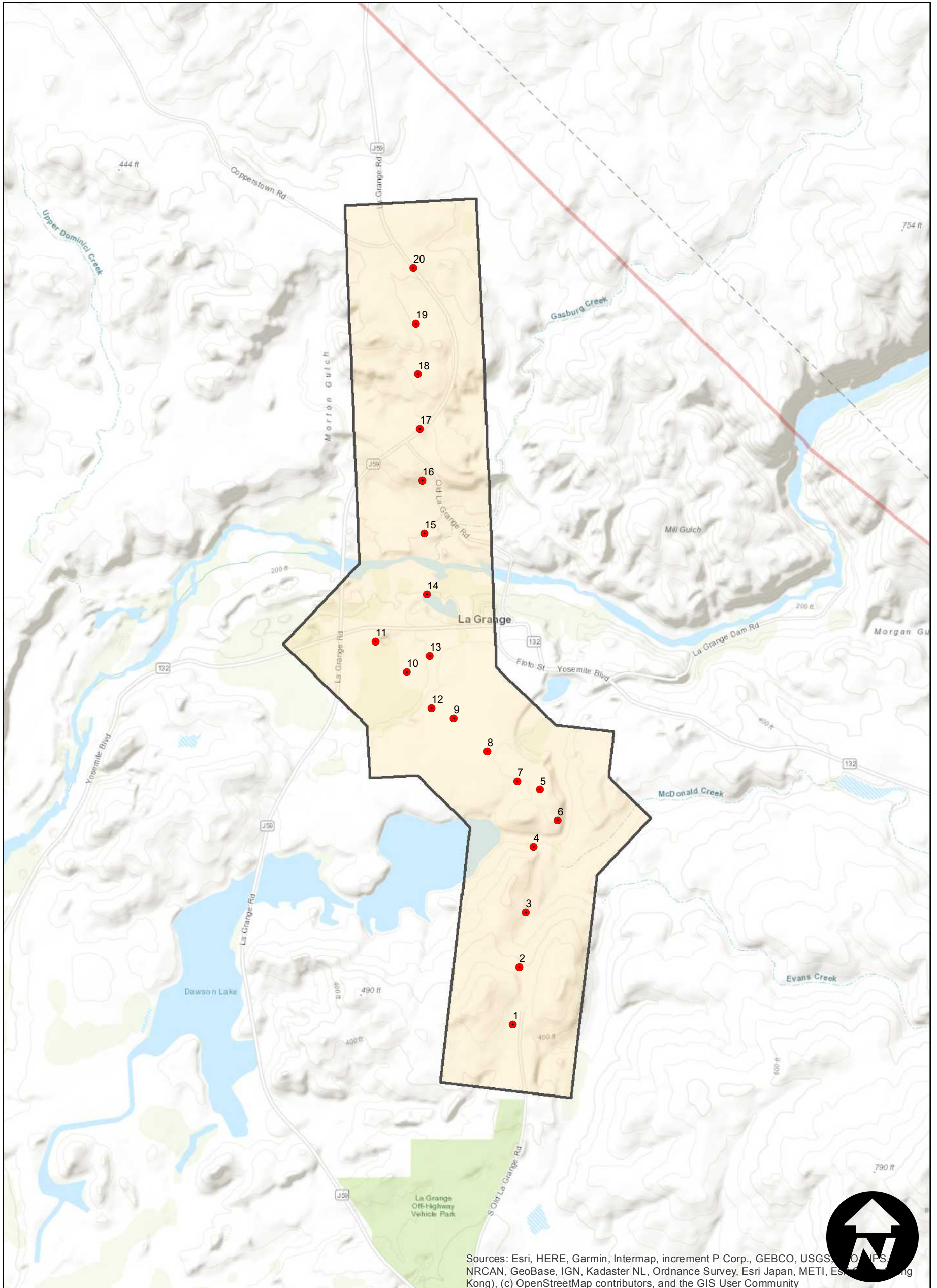
Counties: Stanislaus  
Flight date(s): 06-26-1966  
Scale: 1:3,000  
Overlap: 60%

Note: Tuolumne River, vicinity of La Grange. Incorrect scale printed on photographs. Imagery acquired October 2009.

## FLIGHT LOCATION



Complete Metadata:  
<https://www.library.ucsb.edu/src/airphotos/aerial-photography-information>



Sources: Esri, HERE, Garmin, Intermap, increment P Corp., GEBCO, USGS, NOAA, NRCAN, GeoBase, IGN, Kadaster NL, Ordnance Survey, Esri Japan, METI, Esri (China), Swisstopo, (c) OpenStreetMap contributors, and the GIS User Community

0 0.2 0.4 0.8 Miles

Index to Aerial Photography  
Page 1 of 1

Scale of this index: 1:20,000