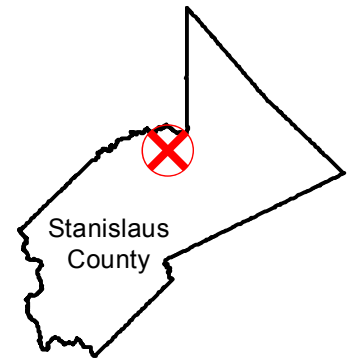


CAS-1234

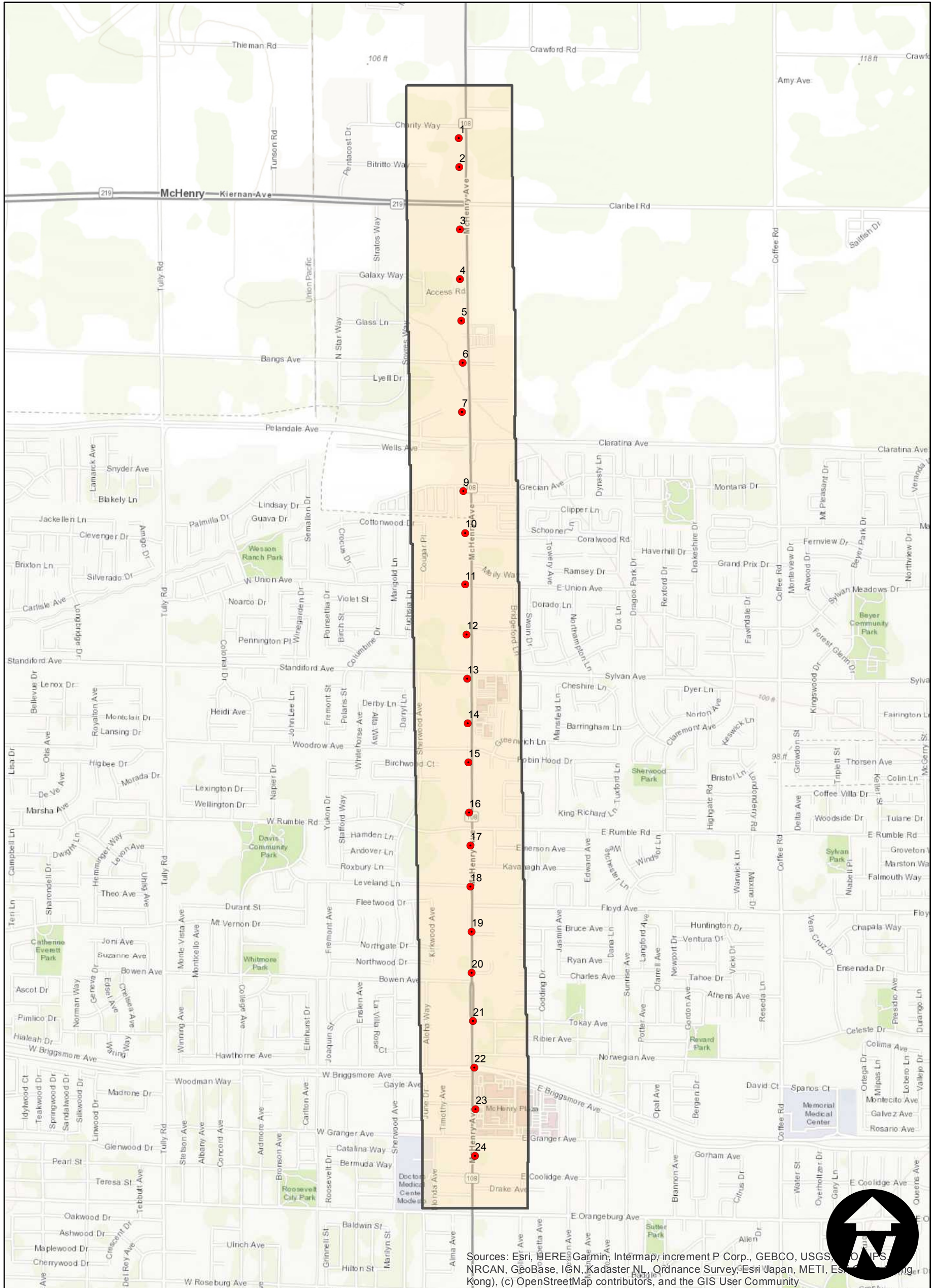
Counties: Stanislaus
Flight date(s): 10-13-1963
Scale: 1:2,400
Overlap: 60%

Note: McHenry Avenue.
Photograph number 8 not
held in MIL's collection.
Imagery acquired October
2009.

FLIGHT LOCATION



Complete Metadata:
<https://www.library.ucsb.edu/src/airphotos/aerial-photography-information>



0 0.2 0.4 0.8 Miles

Index to Aerial Photography
Page 1 of 1

Scale of this index: 1:20,000

Sources: Esri, HERE, Garmin, Intermap, increment P Corp., GEBCO, USGS, NOAA, NRCAN, GeoBase, IGN, Kadaster NL, Ordnance Survey, Esri Japan, METI, Esri (China), Swisstopo, (c) OpenStreetMap contributors, and the GIS User Community