

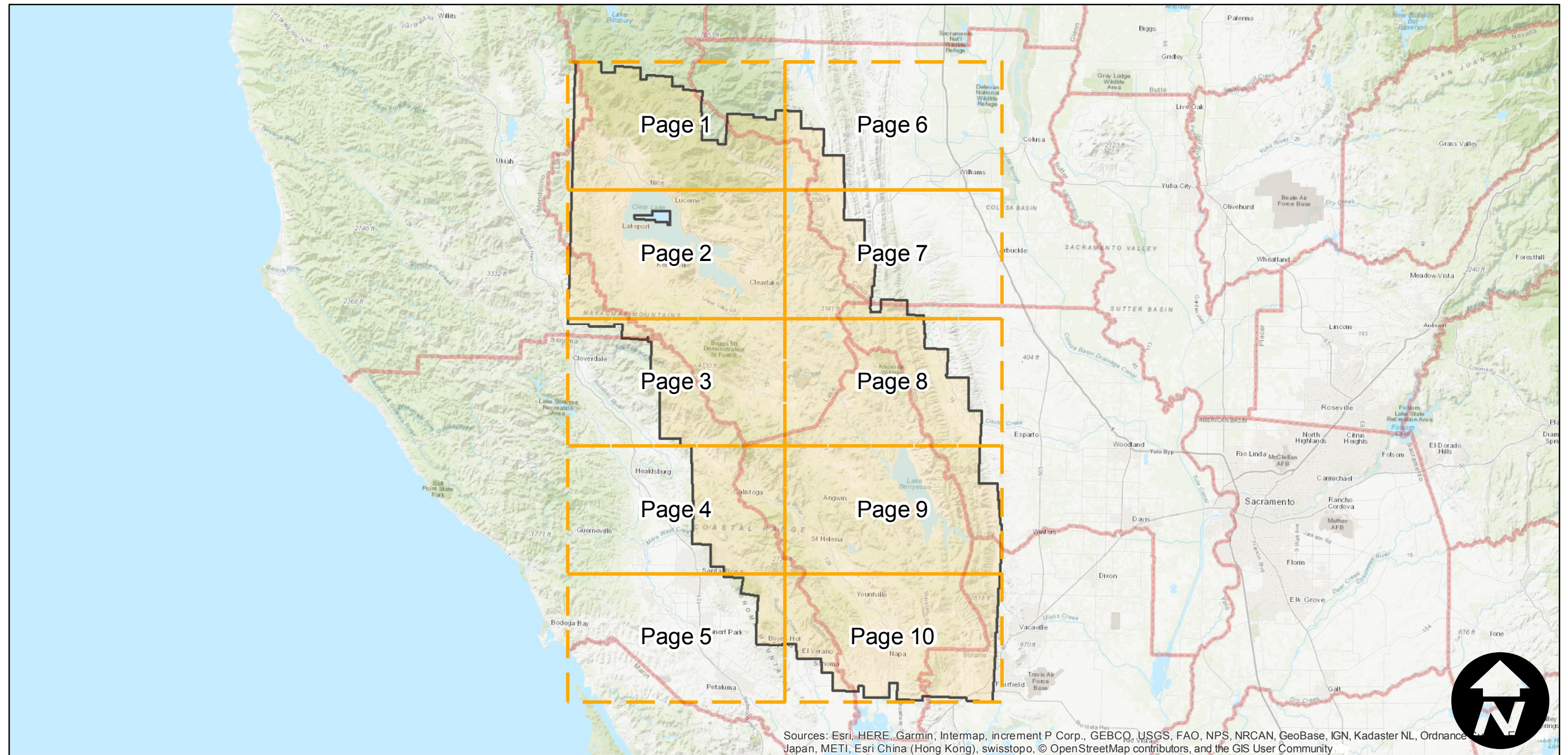
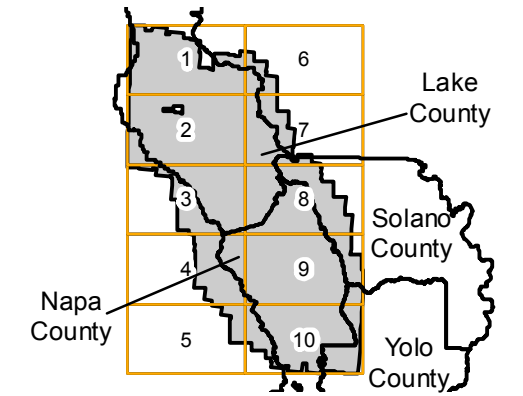
C-and-P

Counties: Napa, Lake, Solano, Yolo
Flight date(s): 06-30-1940 to 07-26-1940
Scale: 1:20,000
Overlap: 60%

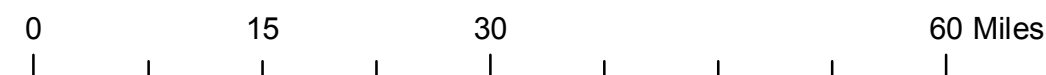
Complete Metadata:
<https://www.library.ucsb.edu/src/airphotos/aerial-photography-information>

Note: Coverage of Angwin, Clearlake, Helena, Napa, Yountville, and vicinity.

FLIGHT LOCATION



Sources: Esri, HERE, Garmin, Intermap, increment P Corp., GEBCO, USGS, FAO, NPS, NRCAN, GeoBase, IGN, Kadaster NL, Ordnance Survey, Esri Japan, METI, Esri China (Hong Kong), swisstopo, © OpenStreetMap contributors, and the GIS User Community



Index to Aerial Photography
Page Key

Scale of this index: 1:800,000

C-and-P

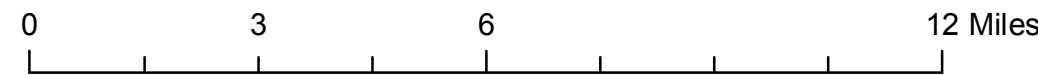
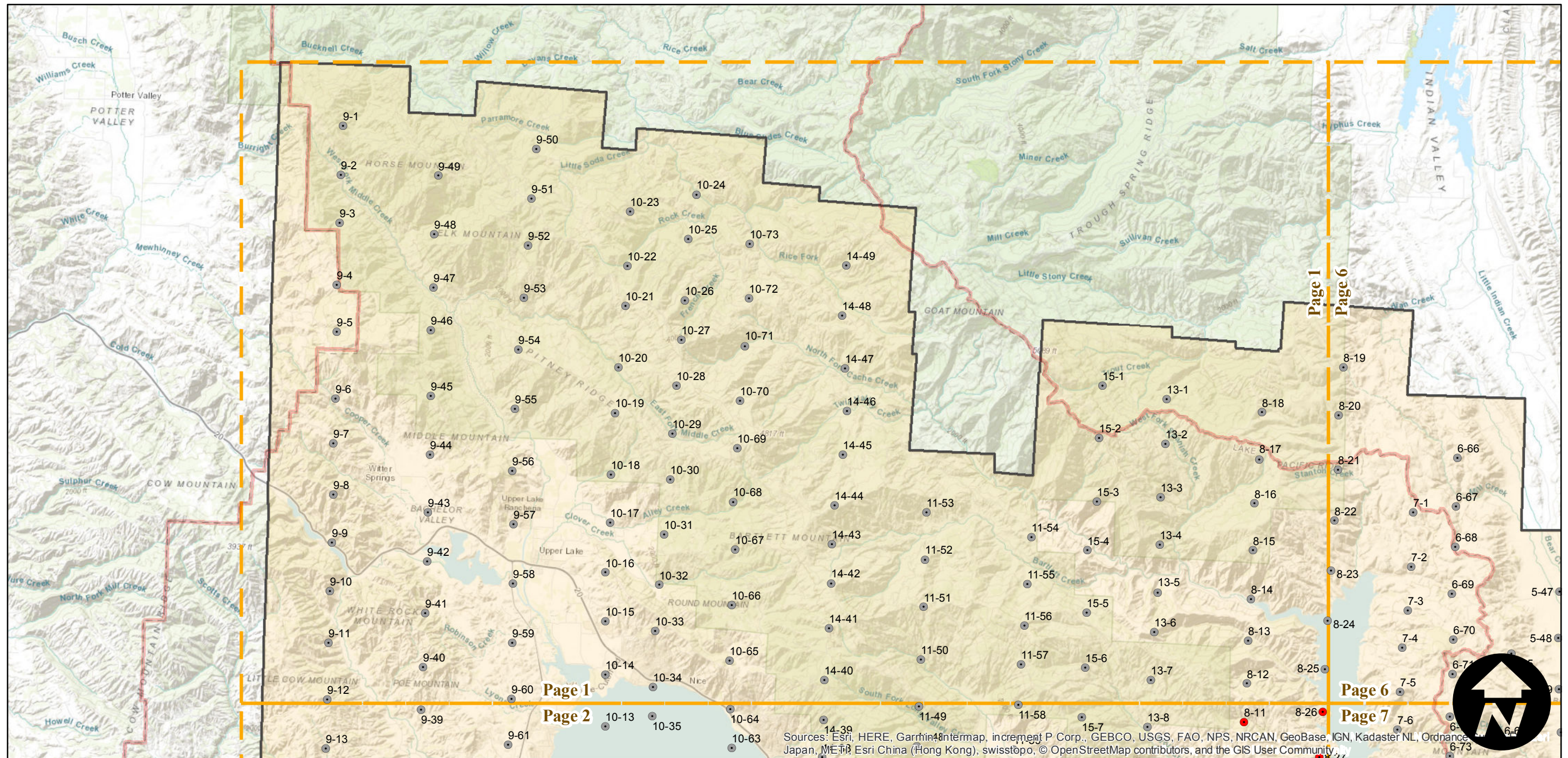
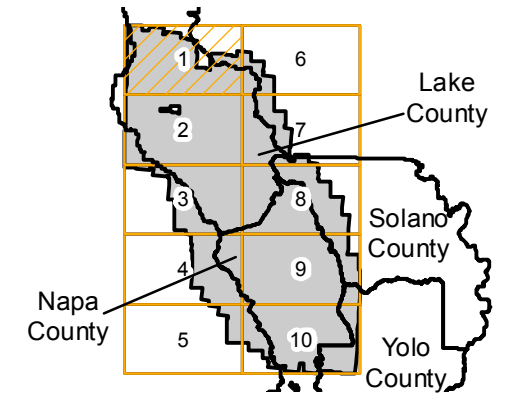
Counties: Napa, Lake, Solano, Yolo
 Flight date(s): 06-30-1940 to 07-26-1940
 Scale: 1:20,000
 Overlap: 60%

Complete Metadata:
<https://www.library.ucsb.edu/src/airphotos/aerial-photography-information>

Note: Coverage of Angwin, Clearlake, Helena, Napa, Yountville, and vicinity.

- MIL owns frame
- MIL does not own frame

FLIGHT LOCATION



Sources: Esri, HERE, Garmin, Intermap, increment P Corp., GEBCO, USGS, FAO, NPS, NRCAN, GeoBase, IGN, Kadaster NL, Ordnance Survey, Esri, HERE, Esri China (Hong Kong), swisstopo, © OpenStreetMap contributors, and the GIS User Community

C-and-P

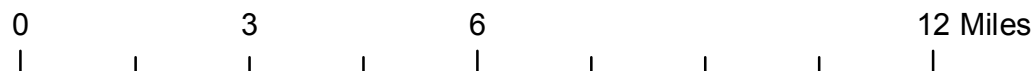
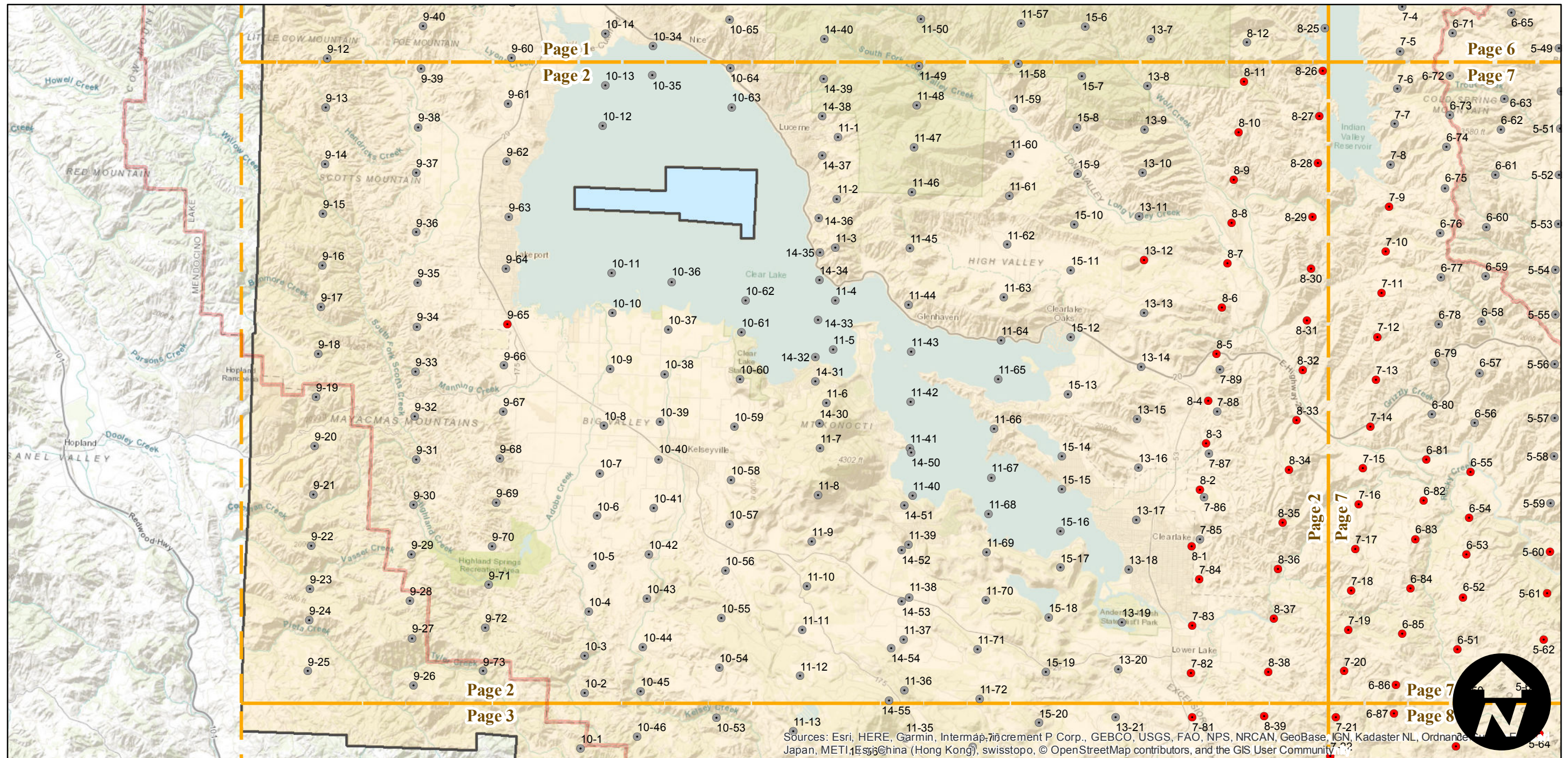
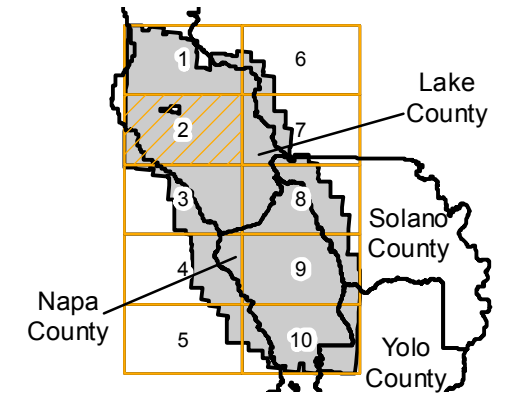
Counties: Napa, Lake, Solano, Yolo
 Flight date(s): 06-30-1940 to 07-26-1940
 Scale: 1:20,000
 Overlap: 60%

Complete Metadata:
<https://www.library.ucsb.edu/src/airphotos/aerial-photography-information>

Note: Coverage of Angwin, Clearlake, Helena, Napa, Yountville, and vicinity.

- MIL owns frame
- MIL does not own frame

FLIGHT LOCATION



Sources: Esri, HERE, Garmin, Intermap, increment P Corp., GEBCO, USGS, FAO, NPS, NRCAN, GeoBase, IGN, Kadaster NL, Ordnance Survey, Esri, DeLorme, NAVTEQ, Swisstopo, Swisstopo, © OpenStreetMap contributors, and the GIS User Community

C-and-P

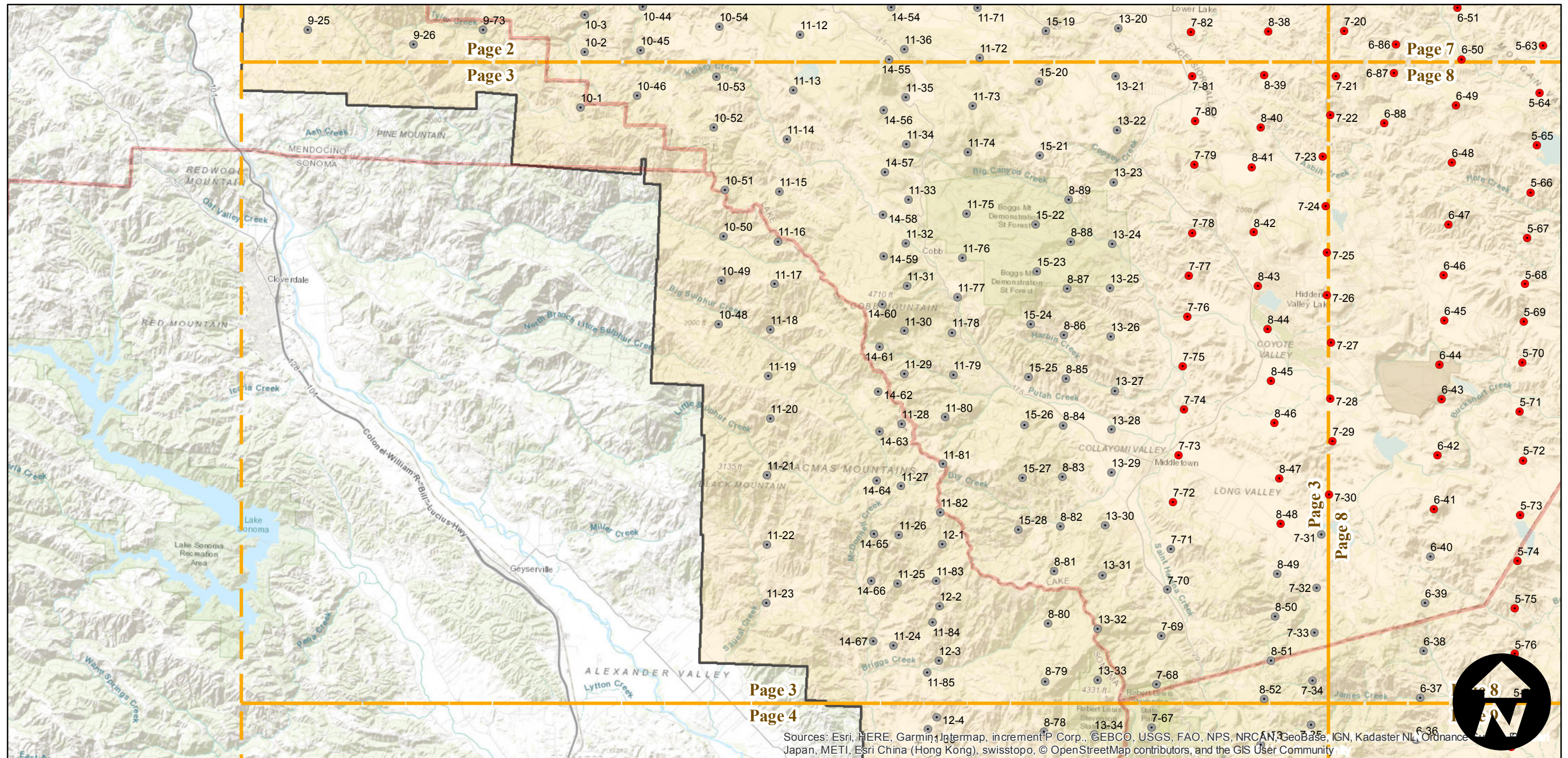
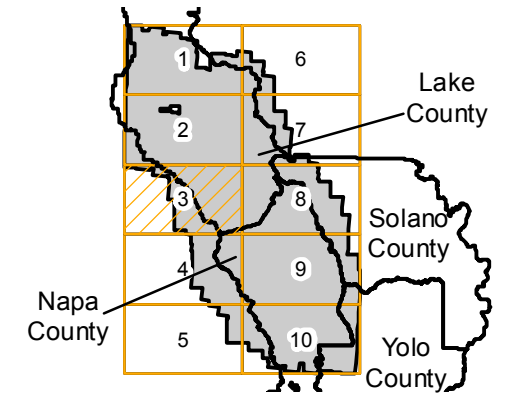
Counties: Napa, Lake, Solano, Yolo
 Flight date(s): 06-30-1940 to 07-26-1940
 Scale: 1:20,000
 Overlap: 60%

Complete Metadata:
<https://www.library.ucsb.edu/src/airphotos/aerial-photography-information>

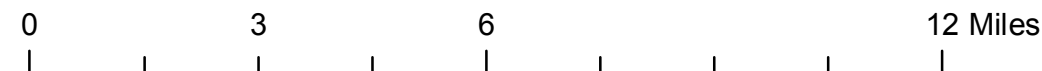
Note: Coverage of Angwin, Clearlake, Helena, Napa, Yountville, and vicinity.

- MIL owns frame
- MIL does not own frame

FLIGHT LOCATION



Sources: Esri, HERE, Garmin, Intermap, increment P Corp., GEBCO, USGS, FAO, NPS, NRCAN, GeoBase, IGN, Kadaster NL, Ordnance Survey, Esri, METI, Esri China (Hong Kong), swisstopo, © OpenStreetMap contributors, and the GIS User Community



C-and-P

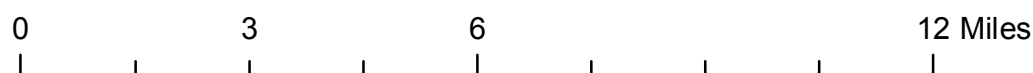
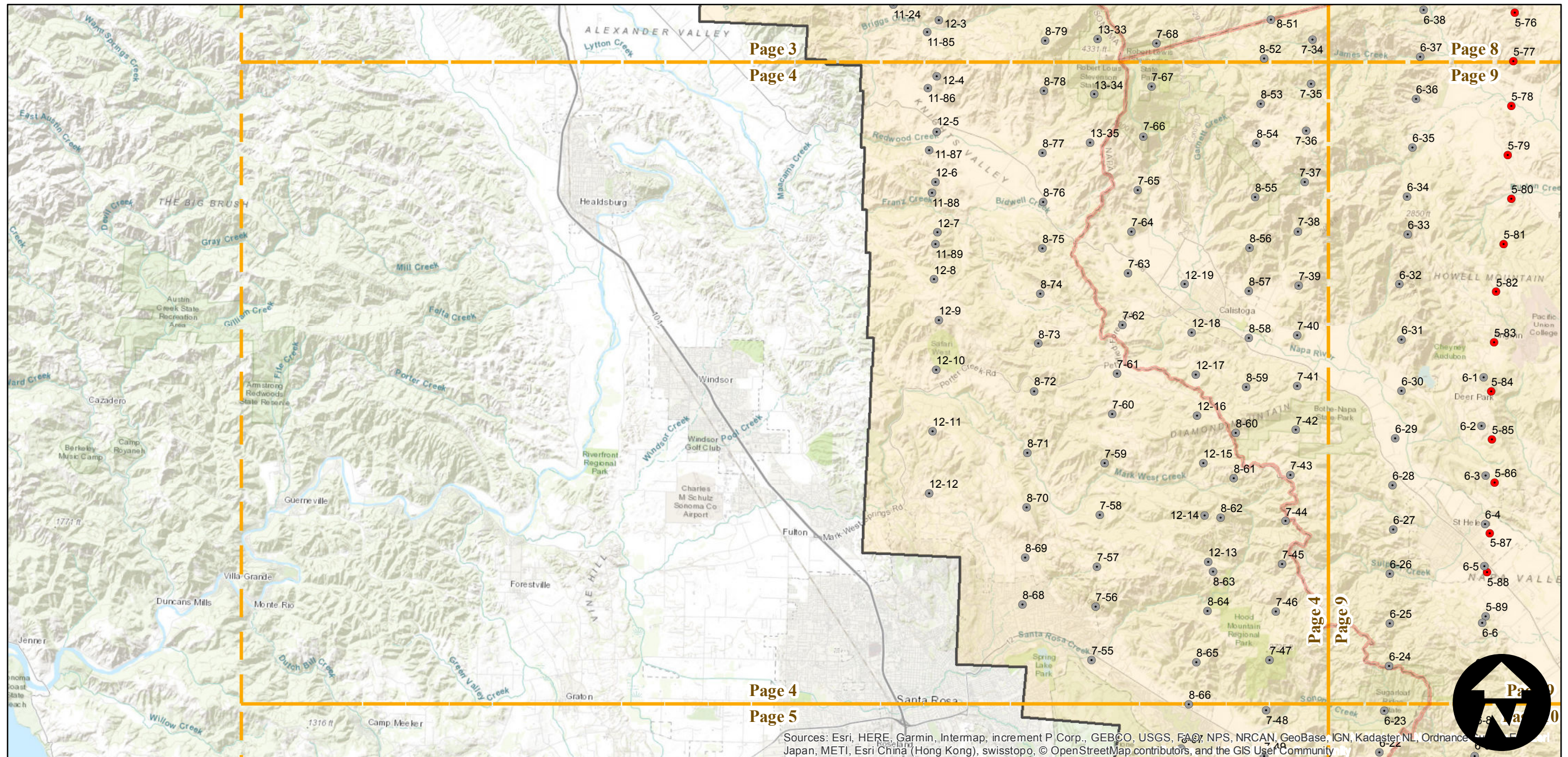
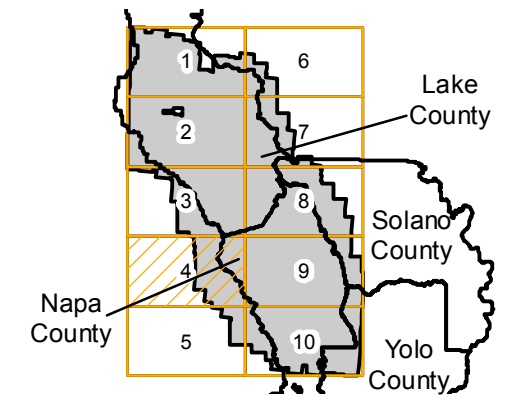
Counties: Napa, Lake, Solano, Yolo
 Flight date(s): 06-30-1940 to 07-26-1940
 Scale: 1:20,000
 Overlap: 60%

Complete Metadata:
<https://www.library.ucsb.edu/src/airphotos/aerial-photography-information>

Note: Coverage of Angwin, Clearlake, Helena, Napa, Yountville, and vicinity.

- MIL owns frame
- MIL does not own frame

FLIGHT LOCATION



Sources: Esri, HERE, Garmin, Intermap, increment P Corp., GEBCO, USGS, FAO, NPS, NRCAN, GeoBase, IGN, Kadaster NL, Ordnance Survey, Esri, METI, Esri China (Hong Kong), swisstopo, © OpenStreetMap contributors, and the GIS User Community

C-and-P

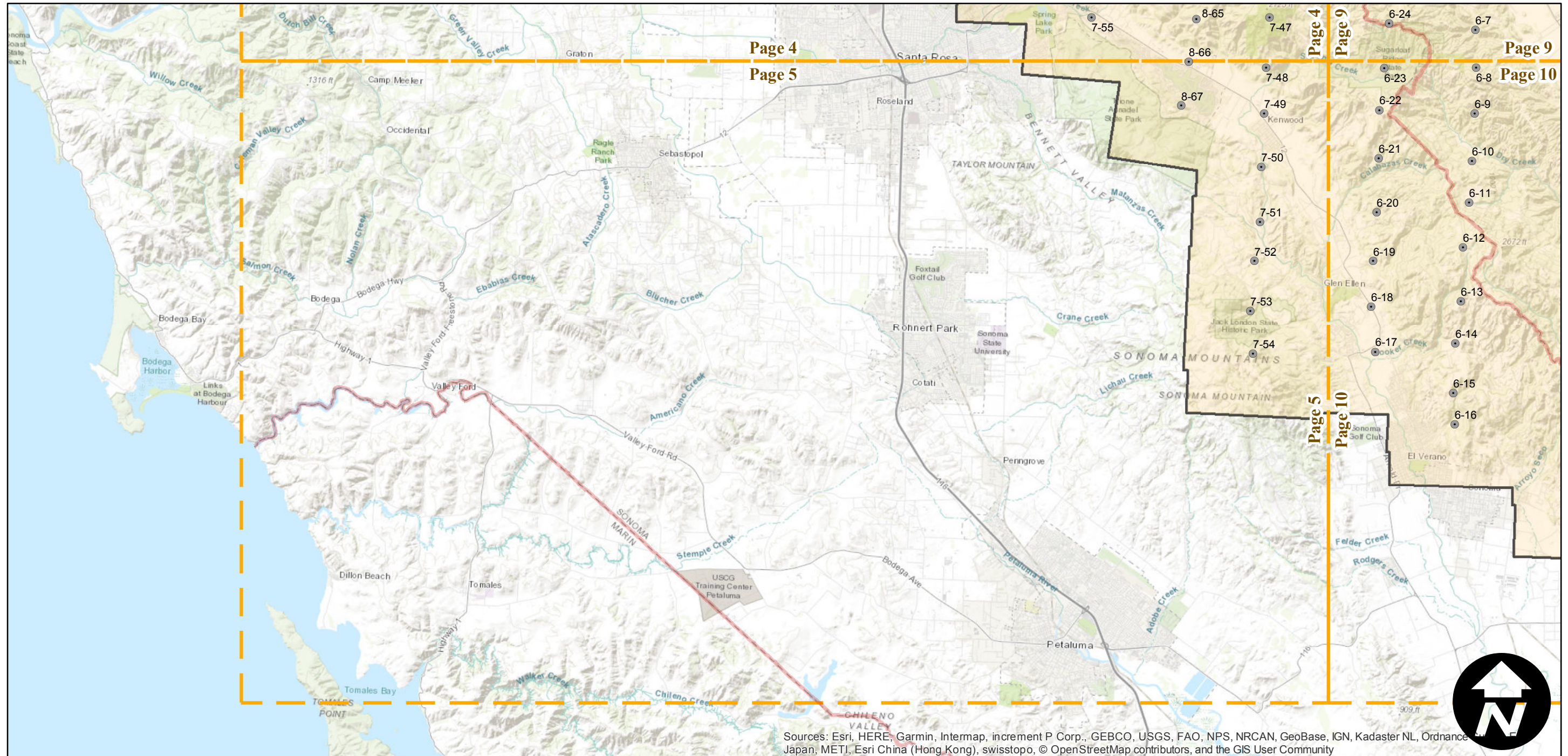
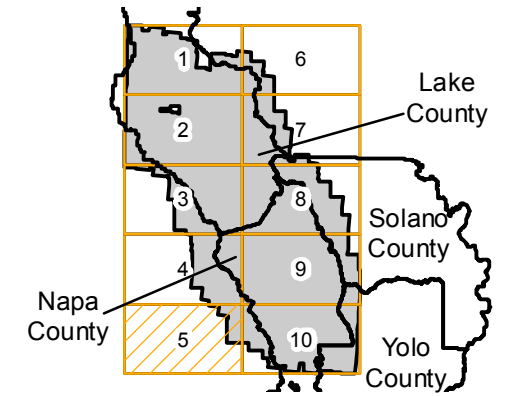
Counties: Napa, Lake, Solano, Yolo
 Flight date(s): 06-30-1940 to 07-26-1940
 Scale: 1:20,000
 Overlap: 60%

Complete Metadata:
<https://www.library.ucsb.edu/src/airphotos/aerial-photography-information>

Note: Coverage of Angwin, Clearlake, Helena, Napa, Yountville, and vicinity.

- MIL owns frame
- MIL does not own frame

FLIGHT LOCATION



Sources: Esri, HERE, Garmin, Intermap, increment P Corp., GEBCO, USGS, FAO, NPS, NRCAN, GeoBase, IGN, Kadaster NL, Ordnance Survey, Esri Japan, METI, Esri China (Hong Kong), swisstopo, © OpenStreetMap contributors, and the GIS User Community



C-and-P

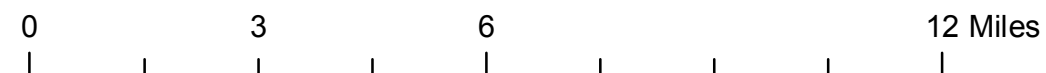
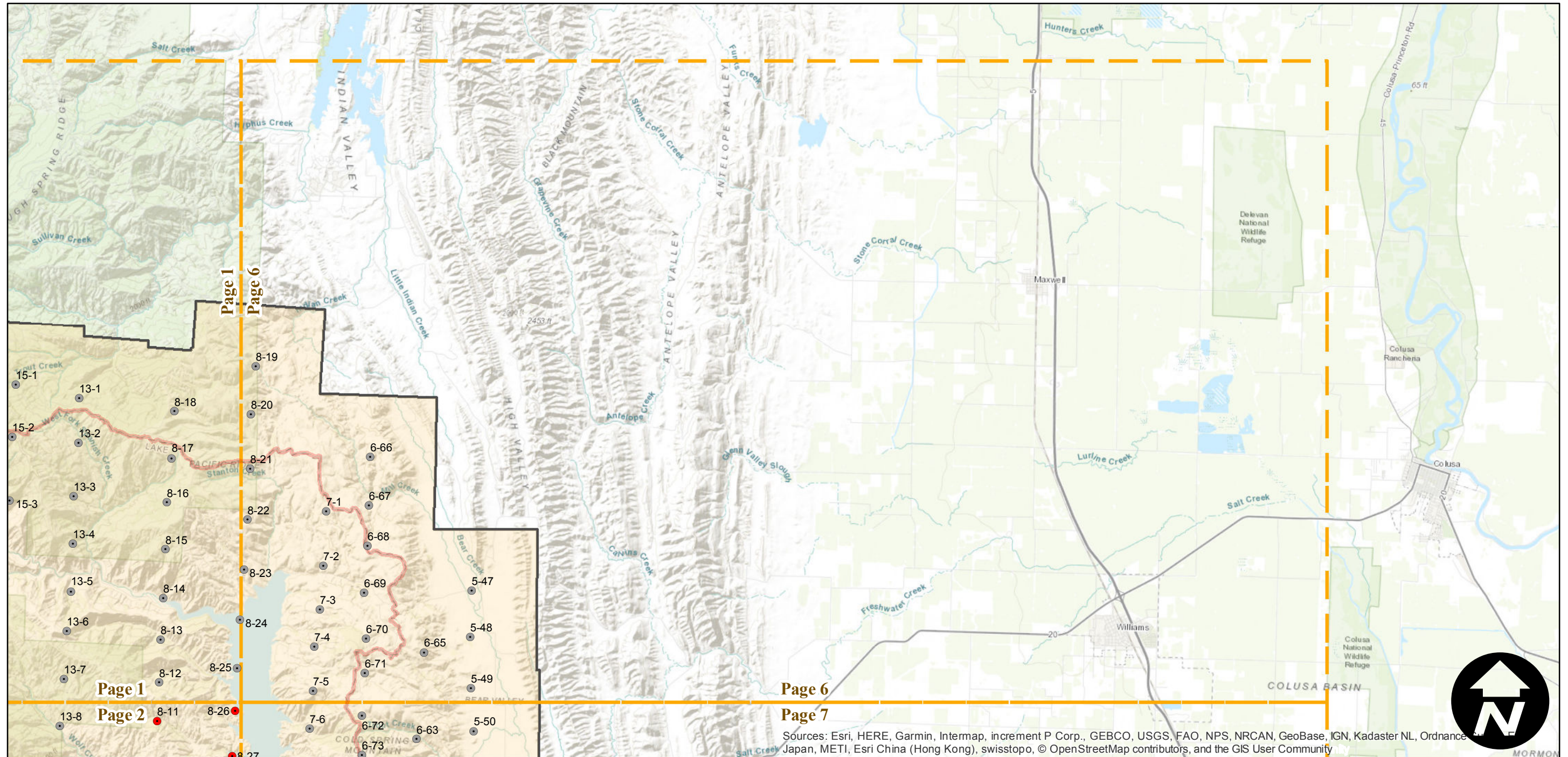
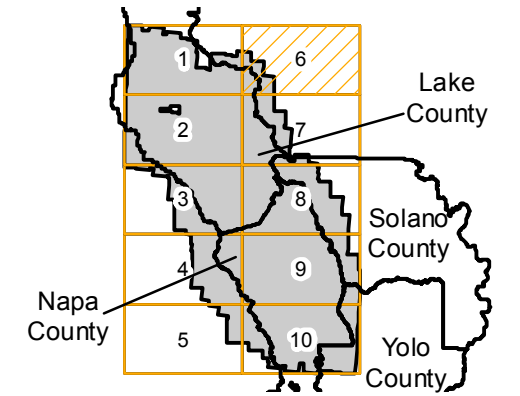
Counties: Napa, Lake, Solano, Yolo
 Flight date(s): 06-30-1940 to 07-26-1940
 Scale: 1:20,000
 Overlap: 60%

Complete Metadata:
<https://www.library.ucsb.edu/src/airphotos/aerial-photography-information>

Note: Coverage of Angwin, Clearlake, Helena, Napa, Yountville, and vicinity.

- MIL owns frame
- MIL does not own frame

FLIGHT LOCATION



Sources: Esri, HERE, Garmin, Intermap, increment P Corp., GEBCO, USGS, FAO, NPS, NRCAN, GeoBase, IGN, Kadaster NL, Ordnance Survey, Esri Japan, METI, Esri China (Hong Kong), swisstopo, © OpenStreetMap contributors, and the GIS User Community

C-and-P

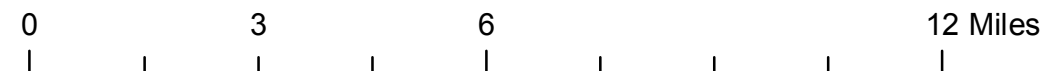
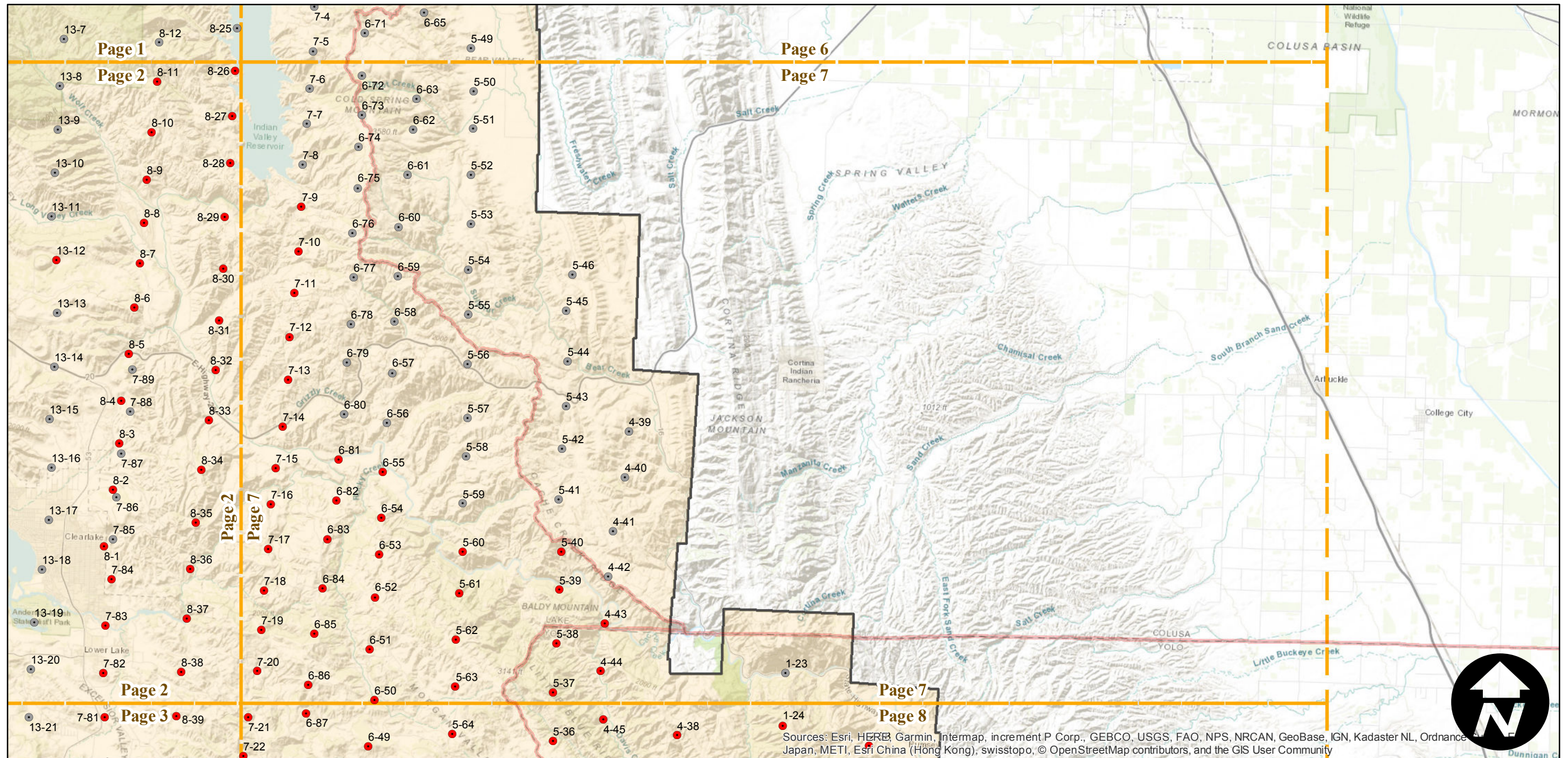
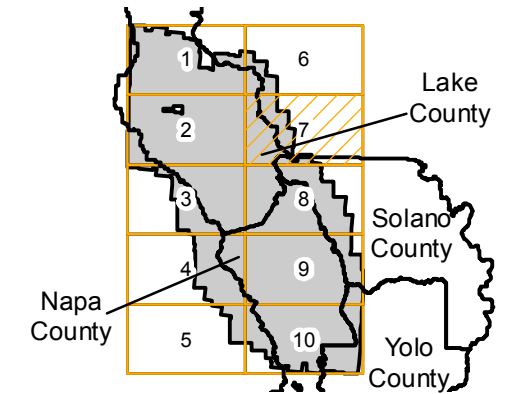
Counties: Napa, Lake, Solano, Yolo
 Flight date(s): 06-30-1940 to 07-26-1940
 Scale: 1:20,000
 Overlap: 60%

Complete Metadata:
<https://www.library.ucsb.edu/src/airphotos/aerial-photography-information>

Note: Coverage of Angwin, Clearlake, Helena, Napa, Yountville, and vicinity.

- MIL owns frame
- MIL does not own frame

FLIGHT LOCATION



Index to Aerial Photography
 Page 7 of 10

Scale of this index: 1:160,000



Sources: Esri, HERE, Garmin, Intermap, increment P Corp., GEBCO, USGS, FAO, NPS, NRCAN, GeoBase, IGN, Kadaster NL, Ordnance Survey, Esri China (Hong Kong), swisstopo, © OpenStreetMap contributors, and the GIS User Community

C-and-P

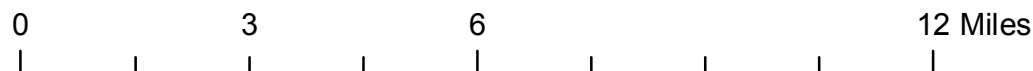
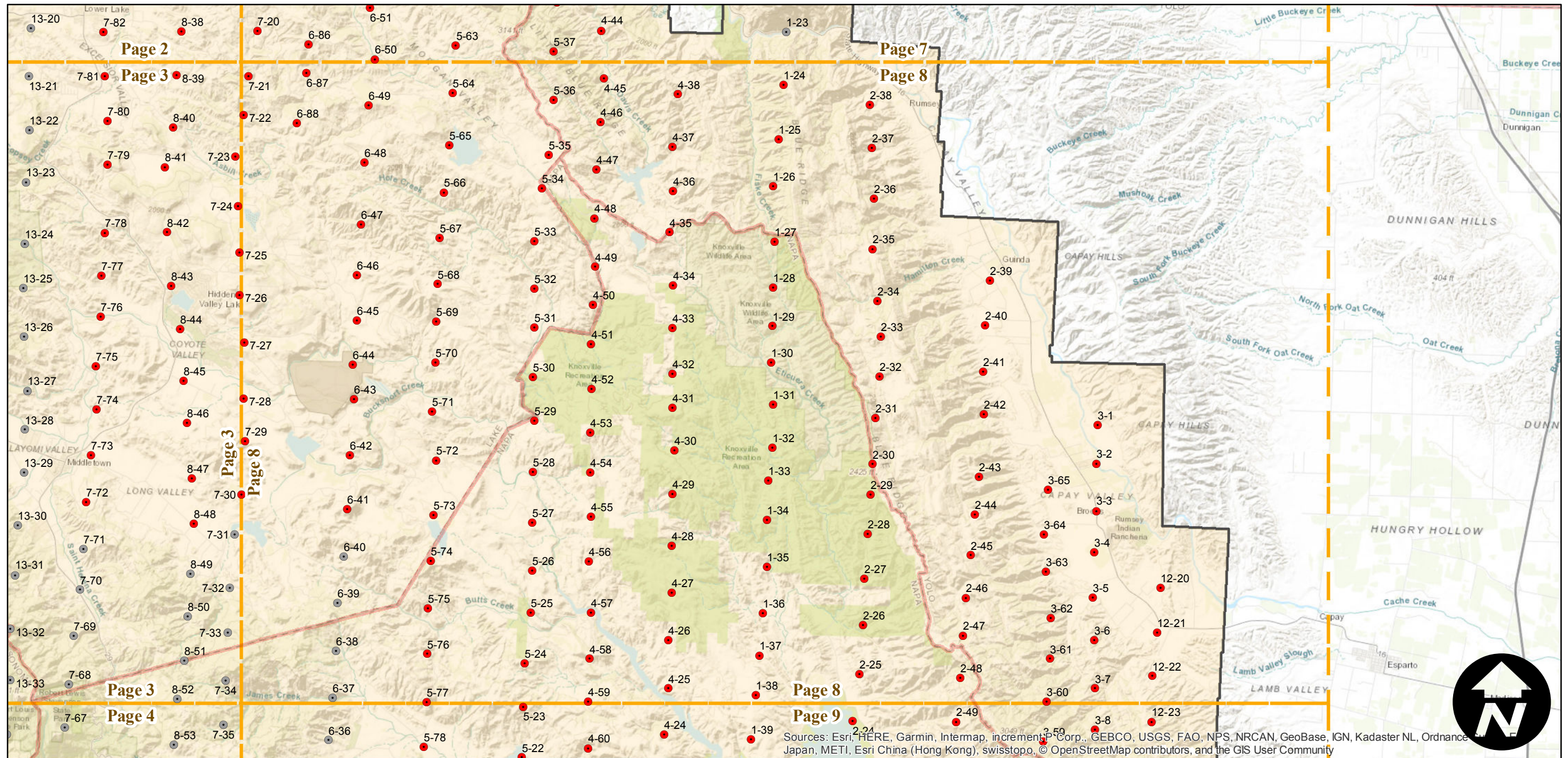
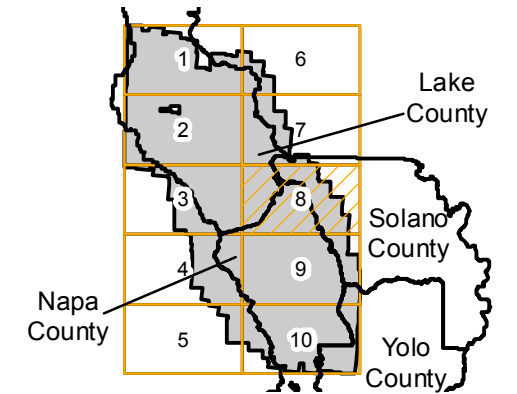
Counties: Napa, Lake, Solano, Yolo
 Flight date(s): 06-30-1940 to 07-26-1940
 Scale: 1:20,000
 Overlap: 60%

Complete Metadata:
<https://www.library.ucsb.edu/src/airphotos/aerial-photography-information>

Note: Coverage of Angwin, Clearlake, Helena, Napa, Yountville, and vicinity.

- MIL owns frame
- MIL does not own frame

FLIGHT LOCATION



Sources: Esri, HERE, Garmin, Intermap, increment P Corp., GEBCO, USGS, FAO, NPS, NRCAN, GeoBase, IGN, Kadaster NL, Ordnance Survey, Esri Japan, METI, Esri China (Hong Kong), swisstopo, © OpenStreetMap contributors, and the GIS User Community



C-and-P

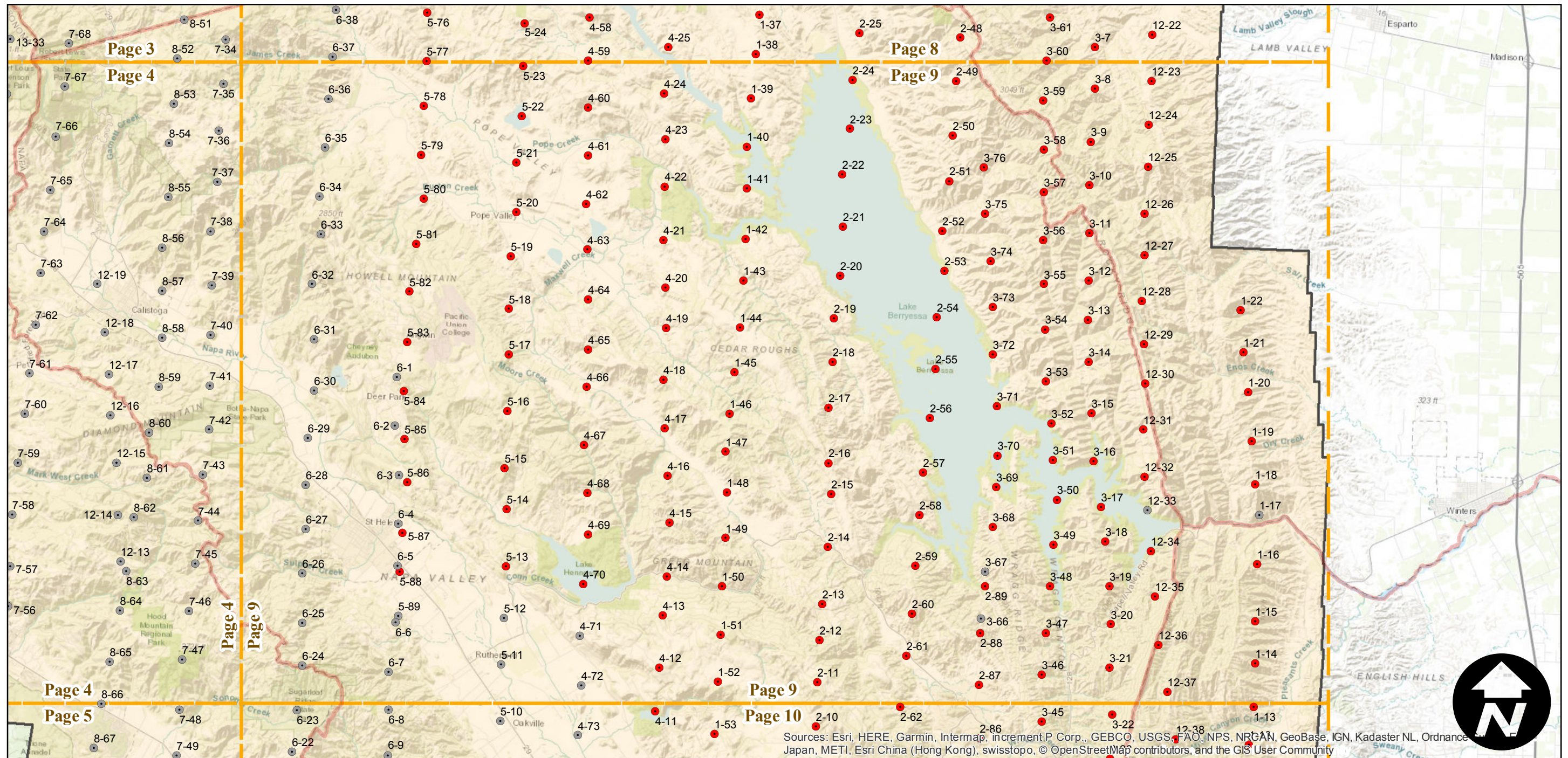
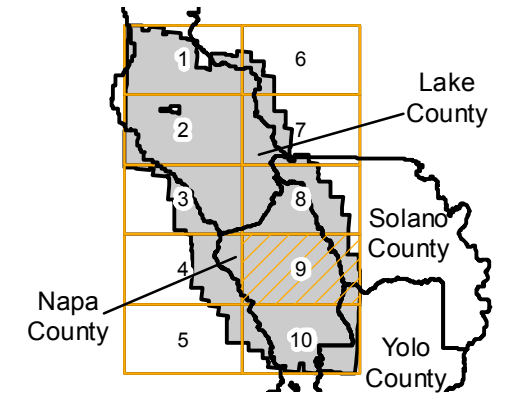
Counties: Napa, Lake, Solano, Yolo
 Flight date(s): 06-30-1940 to 07-26-1940
 Scale: 1:20,000
 Overlap: 60%

Complete Metadata:
<https://www.library.ucsb.edu/src/airphotos/aerial-photography-information>

Note: Coverage of Angwin, Clearlake, Helena, Napa, Yountville, and vicinity.

- MIL owns frame
- MIL does not own frame

FLIGHT LOCATION



Sources: Esri, HERE, Garmin, Intermap, increment P Corp., GEBCO, USGS, FAO, NPS, NRCAN, GeoBase, IGN, Kadaster NL, Ordnance Survey, Esri, Swisstopo, Swisstopo, © OpenStreetMap contributors, and the GIS User Community

0 3 6 12 Miles

Index to Aerial Photography
 Page 9 of 10

Scale of this index: 1:160,000

C-and-P

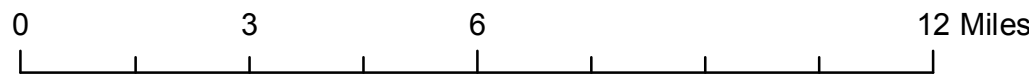
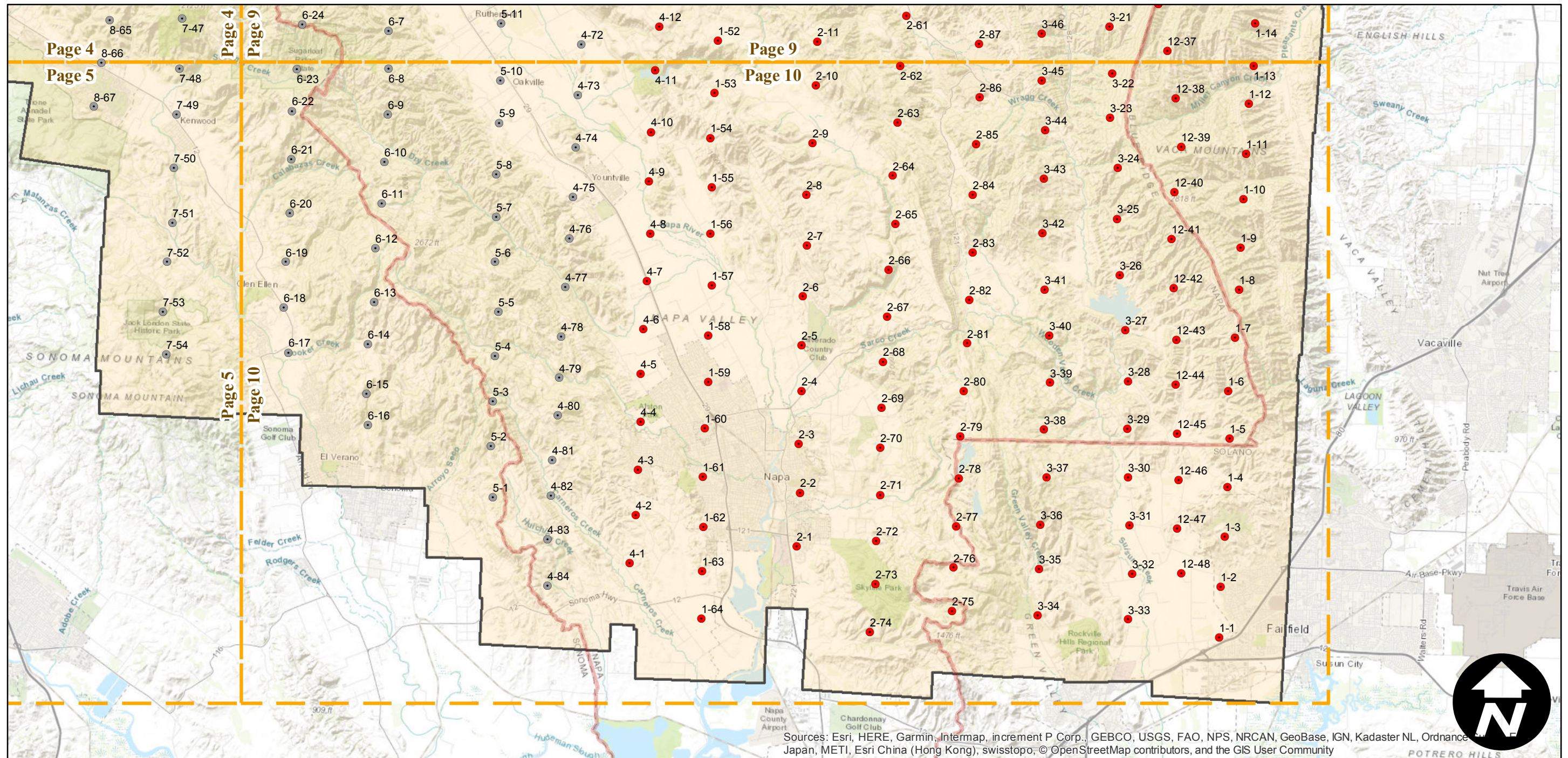
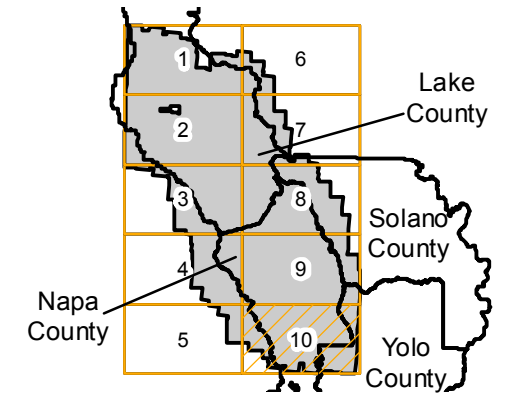
Counties: Napa, Lake, Solano, Yolo
 Flight date(s): 06-30-1940 to 07-26-1940
 Scale: 1:20,000
 Overlap: 60%

Complete Metadata:
<https://www.library.ucsb.edu/src/airphotos/aerial-photography-information>

Note: Coverage of Angwin, Clearlake, Helena, Napa, Yountville, and vicinity.

- MIL owns frame
- MIL does not own frame

FLIGHT LOCATION



Sources: Esri, HERE, Garmin, Intermap, increment P Corp., GEBCO, USGS, FAO, NPS, NRCAN, GeoBase, IGN, Kadaster NL, Ordnance Survey, Esri Japan, METI, Esri China (Hong Kong), swisstopo, © OpenStreetMap contributors, and the GIS User Community