

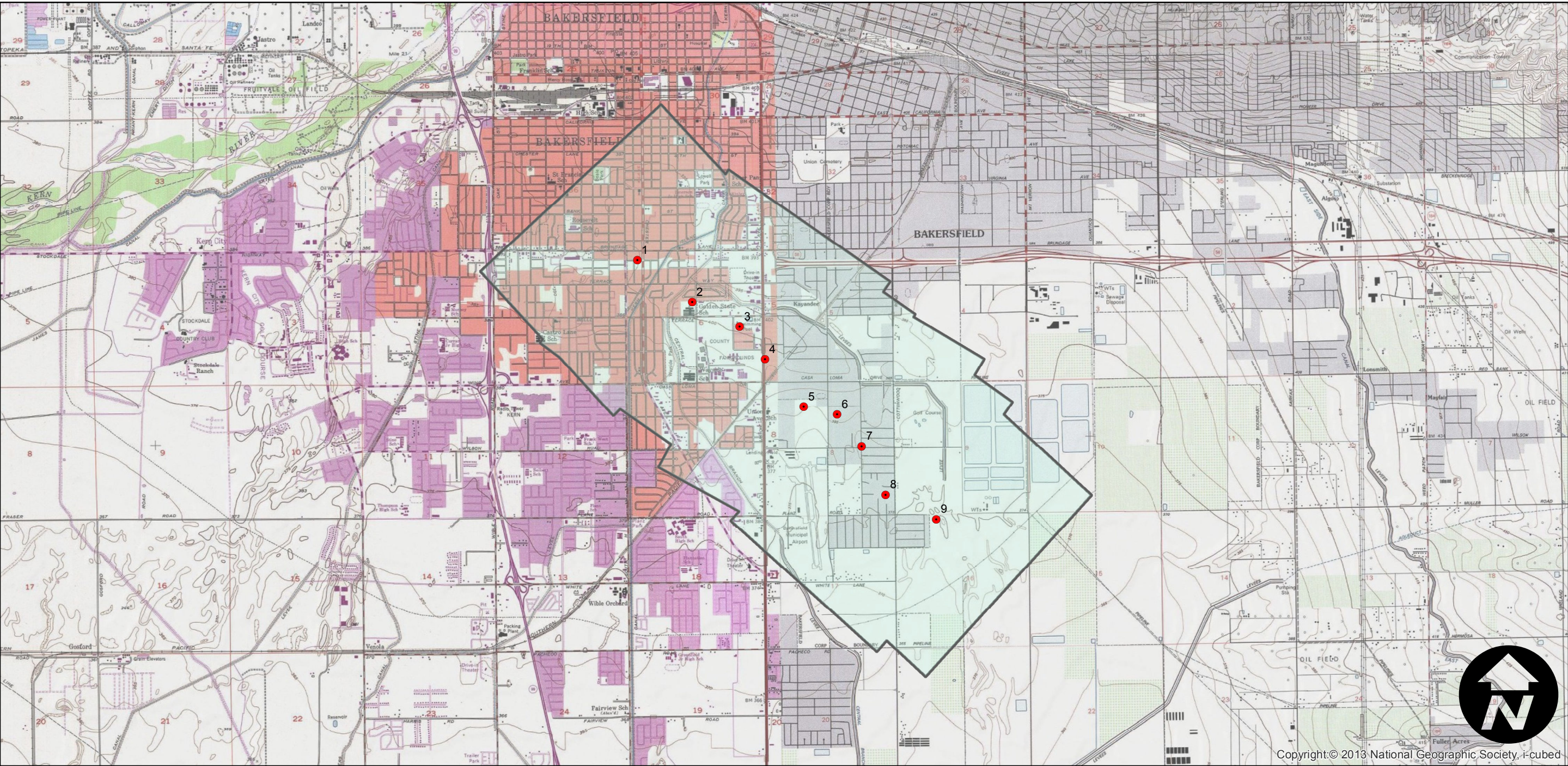
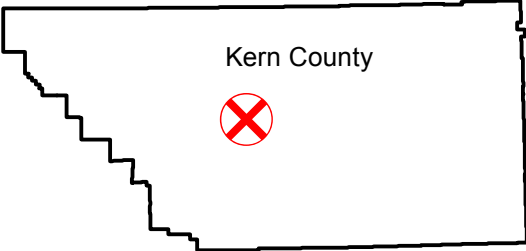
C-98

Counties: Kern
Flight date(s): 01-01-1927 to 12-31-1927
Scale: 1:13,000
Overlap: 60%

Complete Metadata:
<http://www.library.ucsb.edu/mil/aerial-photography-tools>

Note: Bakersfield: vicinity of State Route 204/Union Avenue and State Route 58/Rosa Parks Highway. Acquired from Whittier College, January, 2013.

FLIGHT LOCATION



0 1 2 4 Miles

Index to Aerial Photography
Page 1 of 1

Scale of this index: 1:50,000