

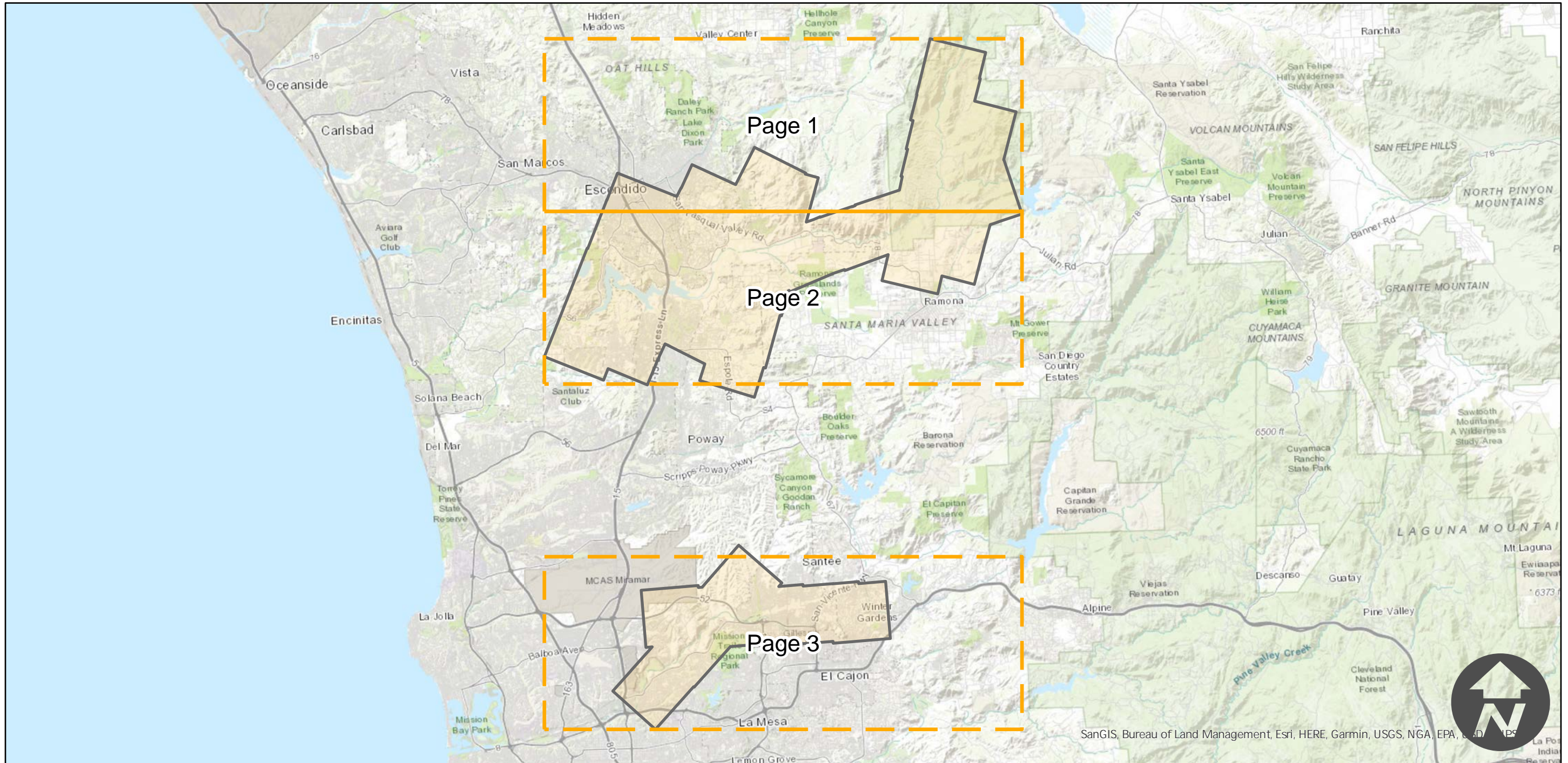
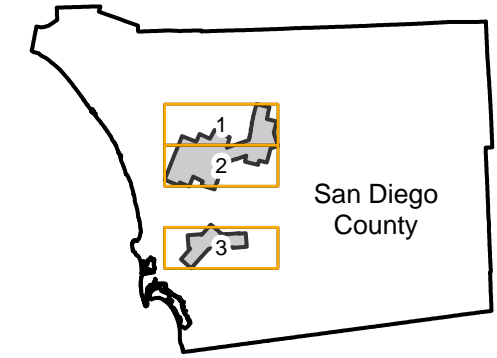
C-9606 (1:18K)

Counties: San Diego
Flight date(s): 07-11-1945
Scale: 1:18,000
Overlap: 60%

Complete Metadata:
<https://www.library.ucsb.edu/src/airphotos/aerial-photography-information>

Note: Pamo dam site (Pamo Valley): area east of Escondido (Lake Hodges) and north of Ramona near San Dieguito River and Santa Ysabel. Mission Gorge Road from Mission Valley (Interstate 15) to Santee (SR 67). Imagery acquired January 2013.

FLIGHT LOCATION



0 3.75 7.5 15 Miles

Index to Aerial Photography
Page Key

Scale of this index: 1:300,000

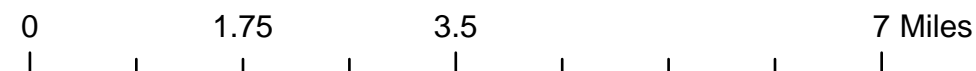
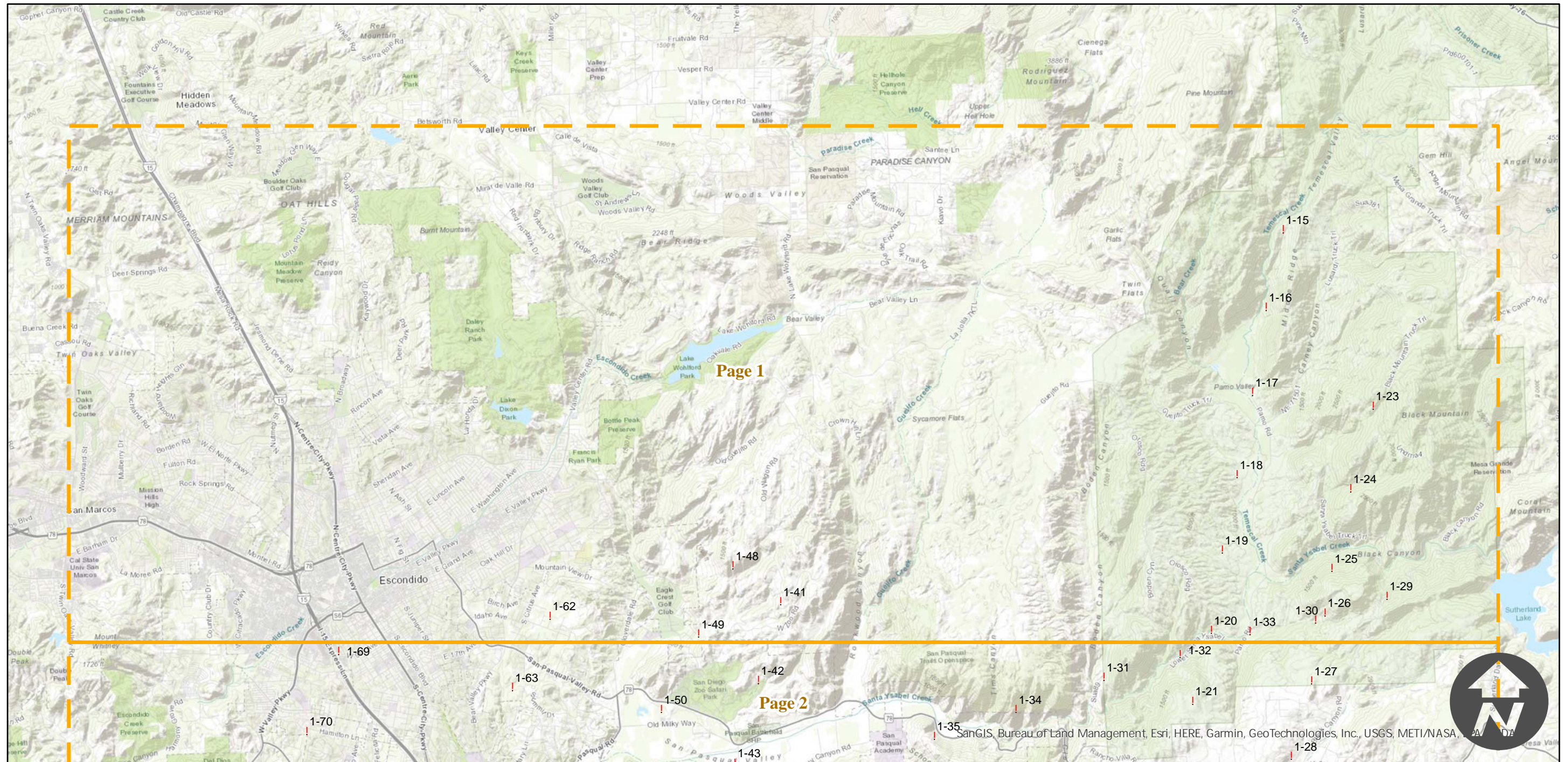
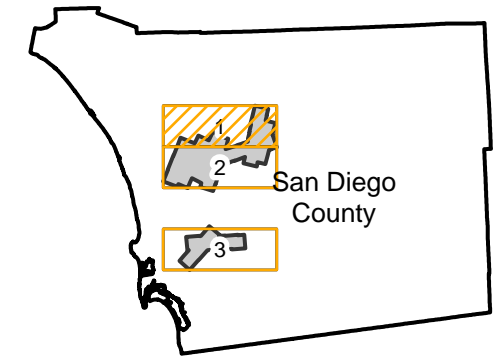
C-9606 (1:18K)

Counties: San Diego
Flight date(s): 07-11-1945
Scale: 1:18,000
Overlap: 60%

Complete Metadata:
<https://www.library.ucsb.edu/src/airphotos/aerial-photography-information>

Note: Pamo dam site (Pamo Valley): area east of Escondido (Lake Hodges) and north of Ramona near San Dieguito River and Santa Ysabel. Mission Gorge Road from Mission Valley (Interstate 15) to Santee (SR 67). Imagery acquired January 2013.

FLIGHT LOCATION



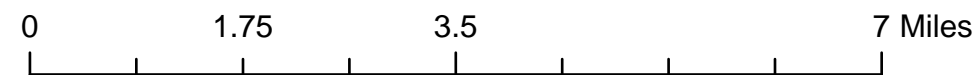
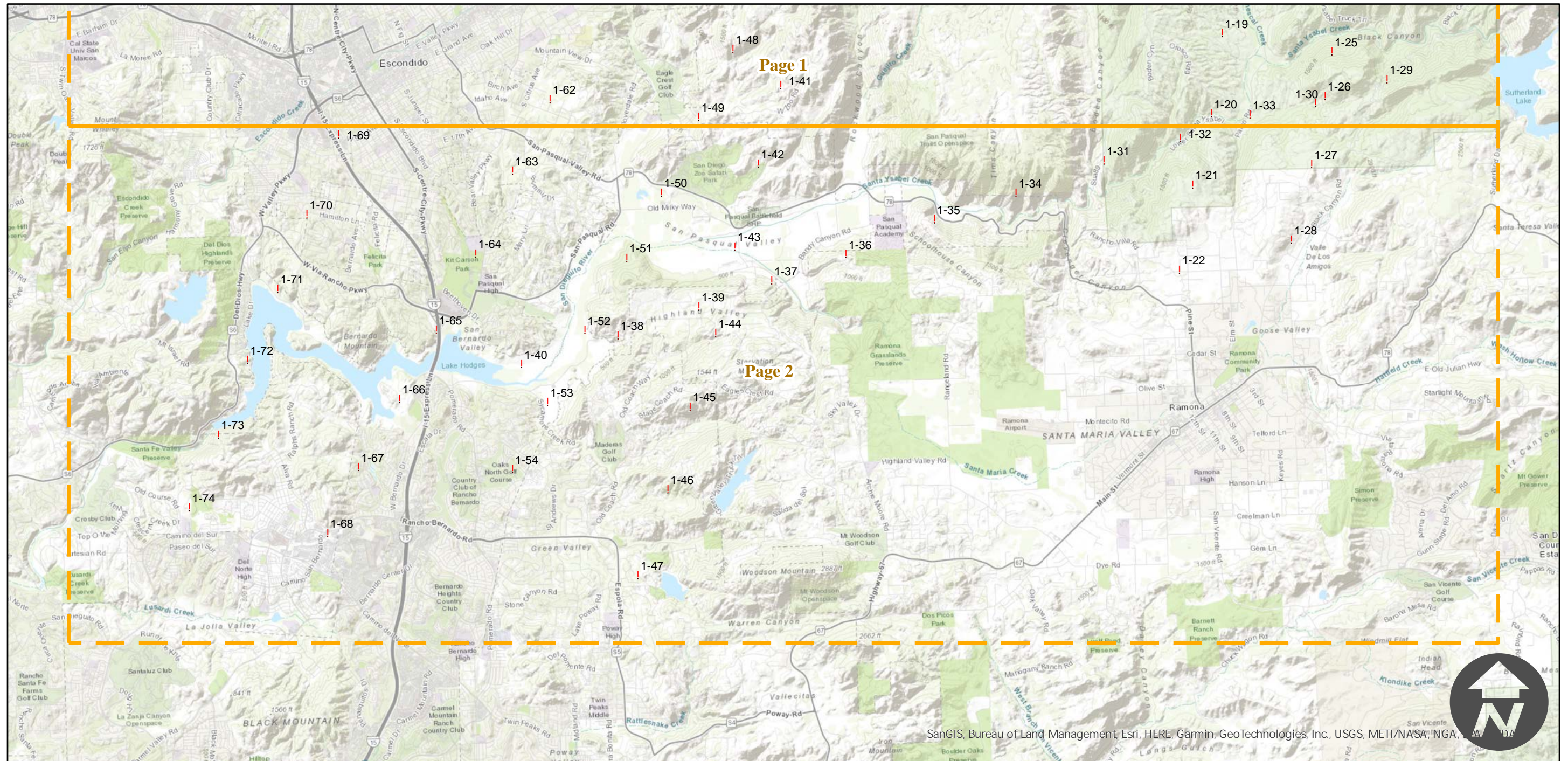
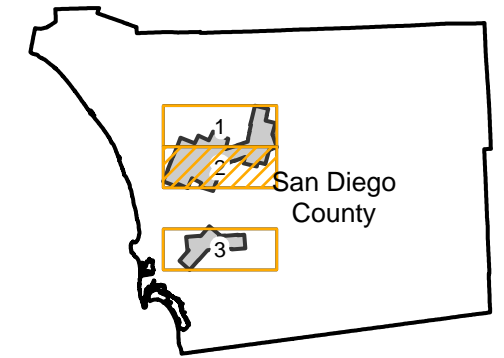
C-9606 (1:18K)

Counties: San Diego
 Flight date(s): 07-11-1945
 Scale: 1:18,000
 Overlap: 60%

Complete Metadata:
<https://www.library.ucsb.edu/src/airphotos/aerial-photography-information>

Note: Pamo dam site (Pamo Valley): area east of Escondido (Lake Hodges) and north of Ramona near San Dieguito River and Santa Ysabel. Mission Gorge Road from Mission Valley (Interstate 15) to Santee (SR 67). Imagery acquired January 2013.

FLIGHT LOCATION



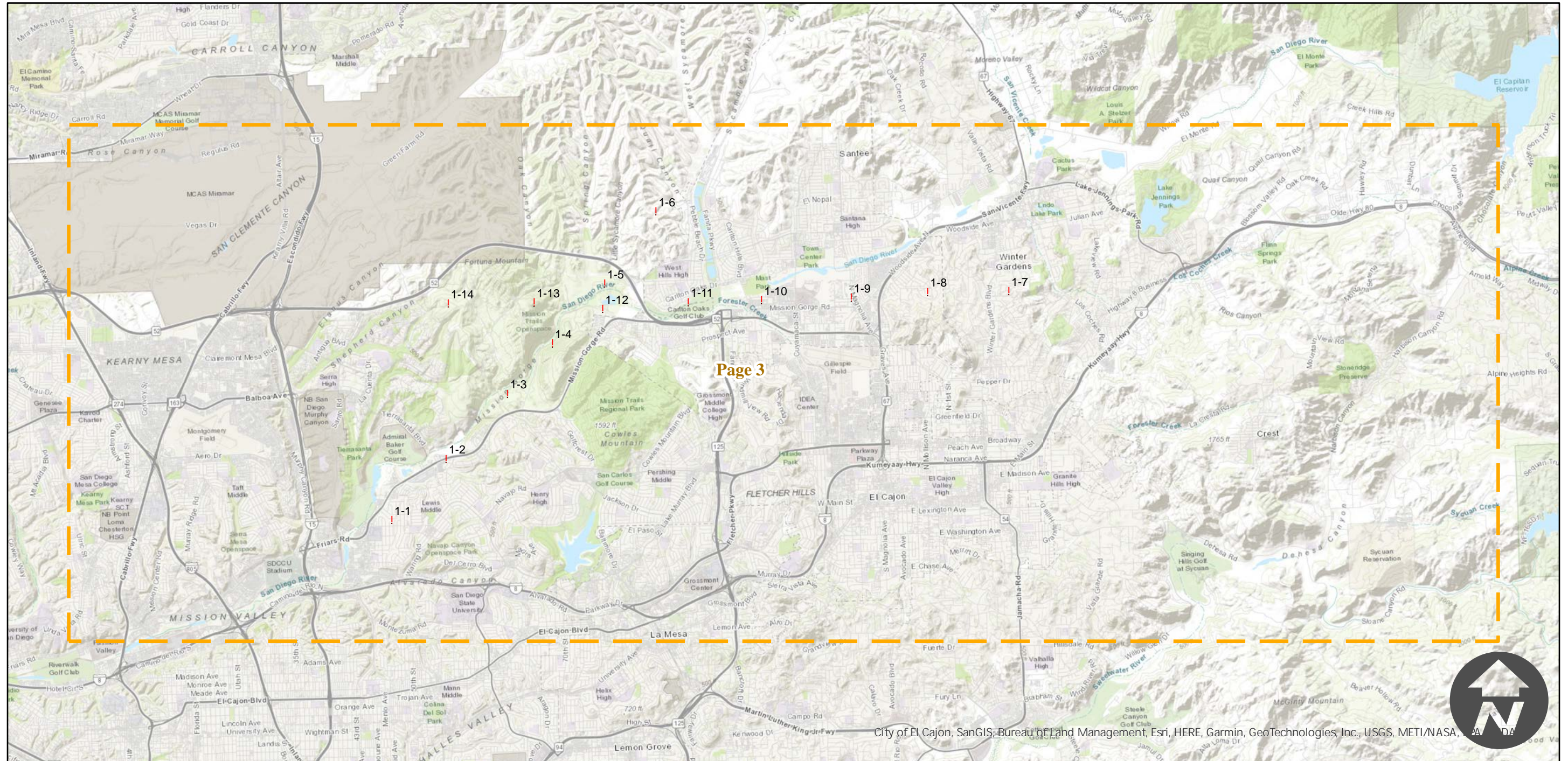
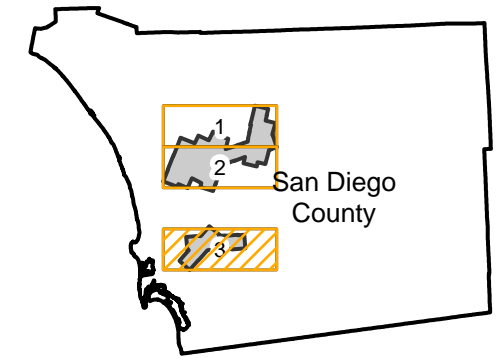
C-9606 (1:18K)

Counties: San Diego
Flight date(s): 07-11-1945
Scale: 1:18,000
Overlap: 60%

Complete Metadata:
<https://www.library.ucsb.edu/src/airphotos/aerial-photography-information>

Note: Pamo dam site (Pamo Valley): area east of Escondido (Lake Hodges) and north of Ramona near San Dieguito River and Santa Ysabel. Mission Gorge Road from Mission Valley (Interstate 15) to Santee (SR 67). Imagery acquired January 2013.

FLIGHT LOCATION



City of El Cajon, SanGIS, Bureau of Land Management, Esri, HERE, Garmin, GeoTechnologies Inc., USGS, METI/NASA, PA, DA

