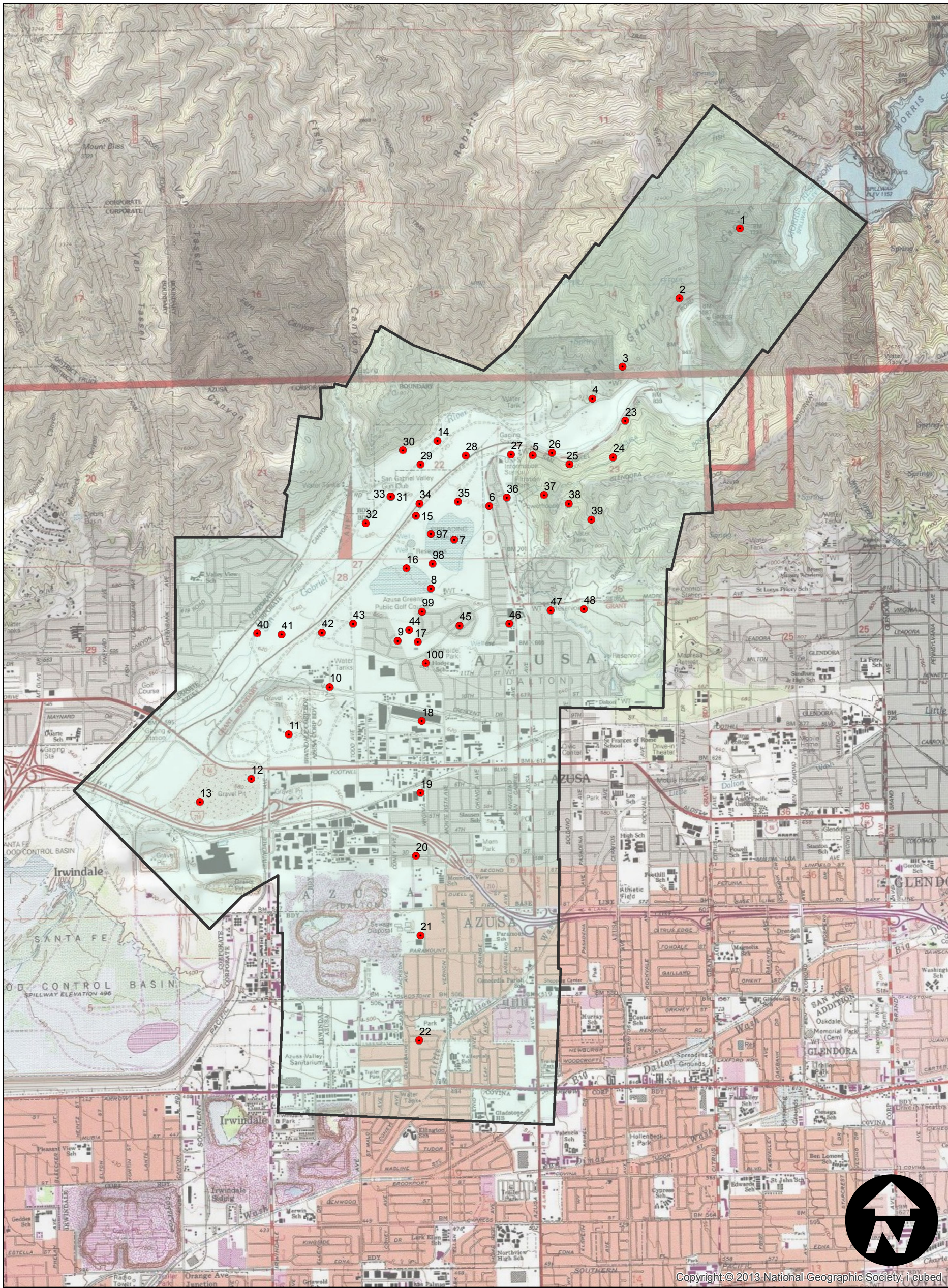


C-927

Counties: Los Angeles
Flight date(s): 01-01-1930
Scale: 1:12,000
Overlap: 60%

Complete Metadata:
<http://www.library.ucsb.edu/mil/aerial-photography-tools>

Note: Azusa: San Gabriel River canyon to Santa Fe Flood Control area. Copy negatives acquired 1986 were made from original nitrate film. Prints and nitrate negatives acquired from Whittier College, January 2013. Nitrate negatives scanned, 2015.



0 0.25 0.5 1 Miles

Index to Aerial Photography
Page 1 of 1

Scale of this index: 1:35,000