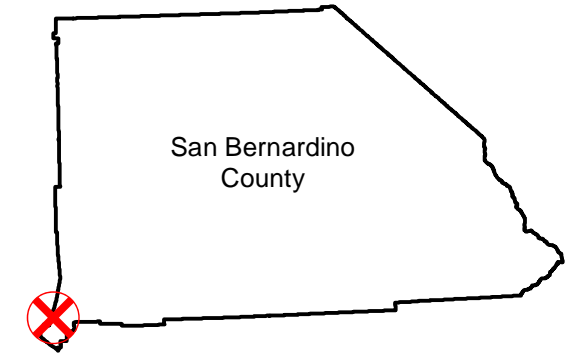


C-911 (1:12.5K)

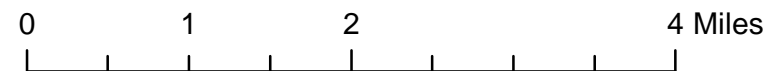
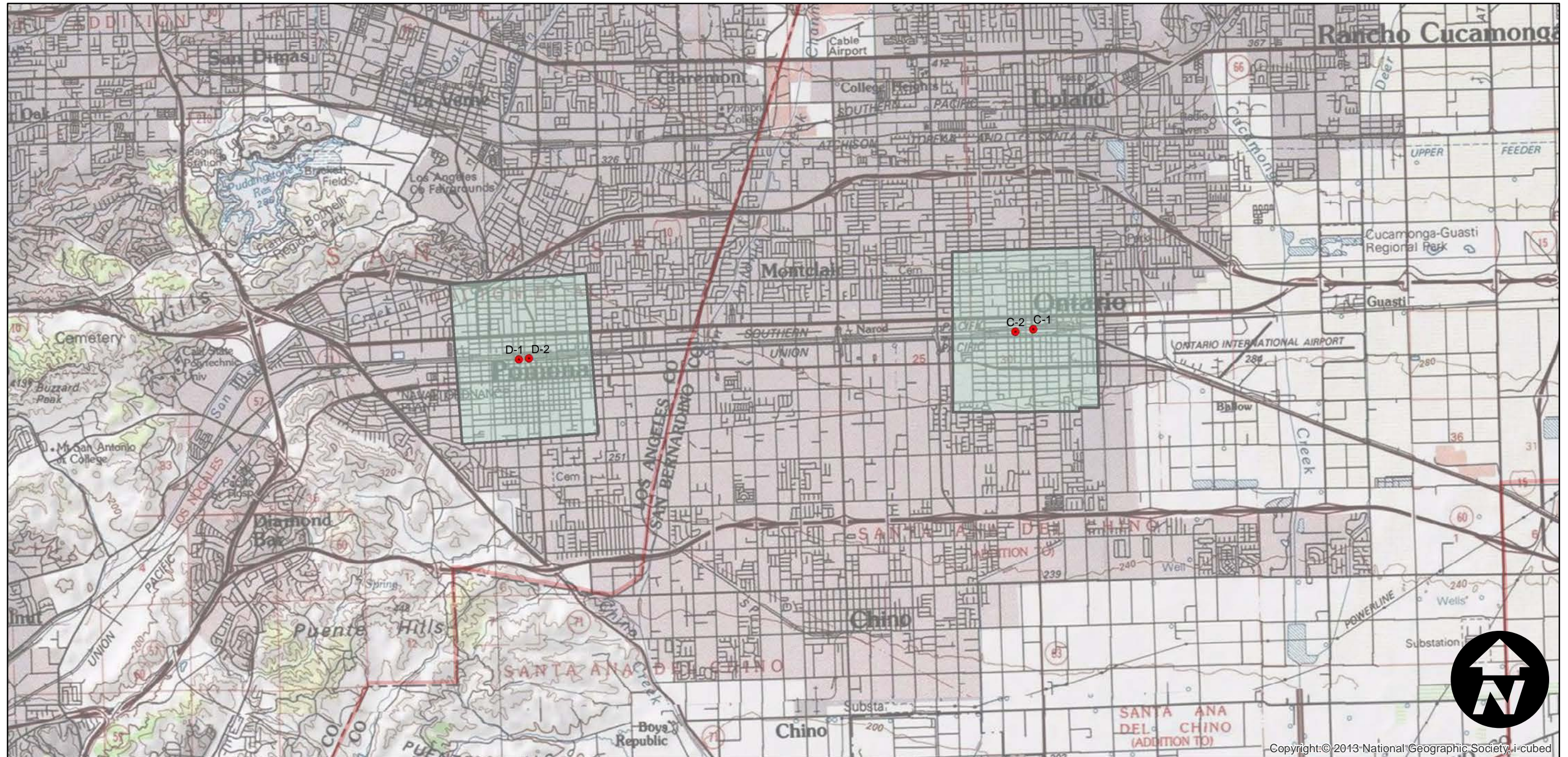
Counties: San Bernardino
Flight date(s): 03-25-1930
Scale: 1:19,000
Overlap: 60%

Note: Santa Ana Canyon, Mill Creek, Ontario, Pomona, and Rialto. Some of the negatives in this flight were taken as part C-910. Acquired from Whittier College, January 2013. Nitrate negatives scanned, 2015.

FLIGHT LOCATION



Complete Metadata:
<http://www.library.ucsb.edu/mil/aerial-photography-tools>



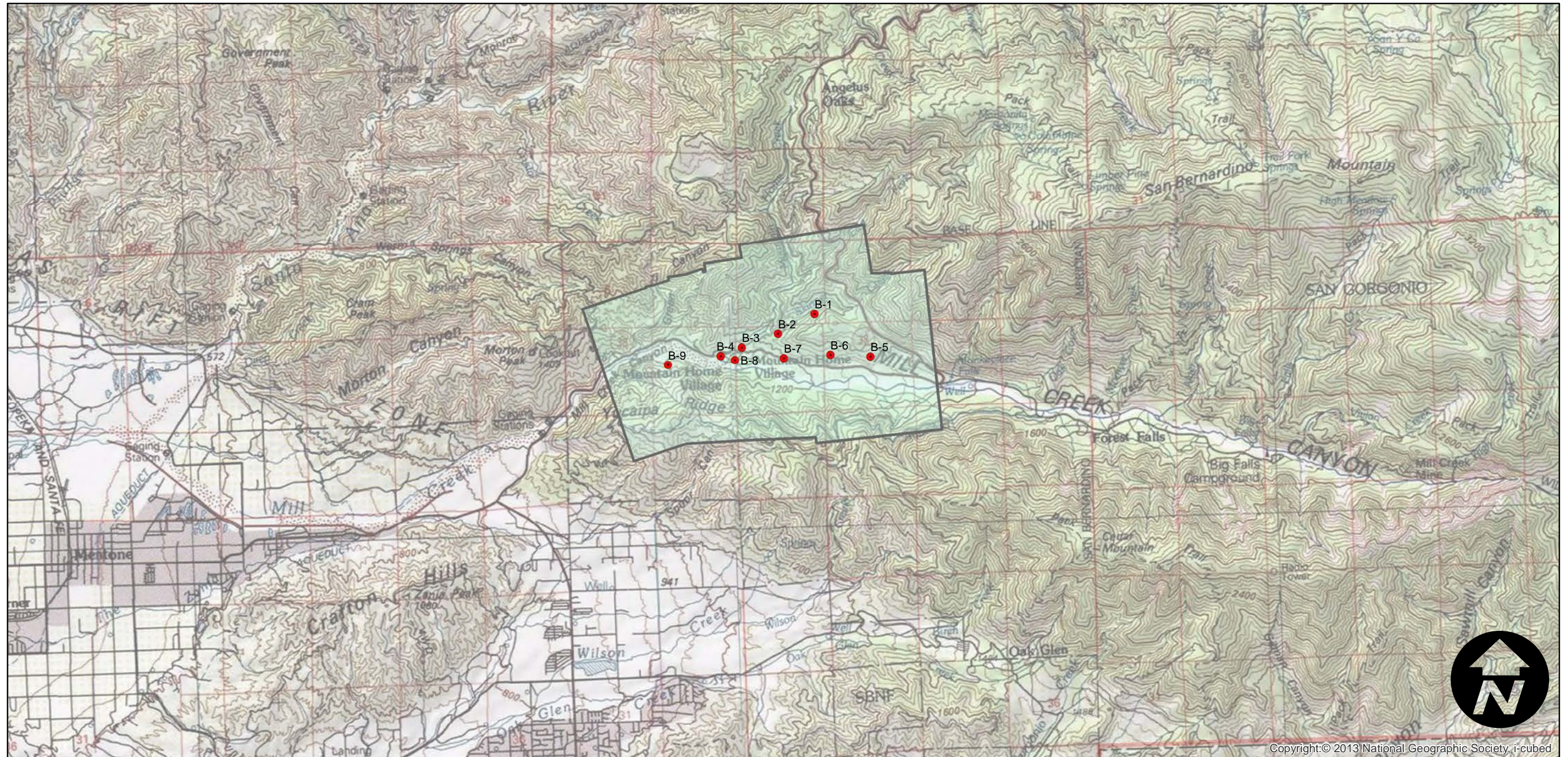
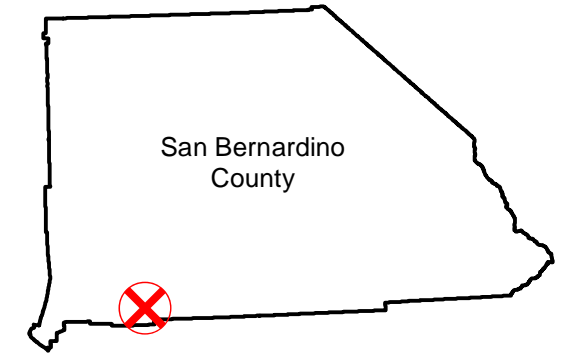
C-911 (1:12.5K)

Counties: San Bernardino
Flight date(s): 03-25-1930
Scale: 1:19,000
Overlap: 60%

Note: Santa Ana Canyon, Mill Creek, Ontario, Pomona, and Rialto. Some of the negatives in this flight were taken as part C-910. Acquired from Whittier College, January 2013. Nitrate negatives scanned, 2015.

Complete Metadata:
<http://www.library.ucsb.edu/mil/aerial-photography-tools>

FLIGHT LOCATION



0 1 2 4 Miles

Index to Aerial Photography
Page 2 of 2

Scale of this index: 1:75,000