

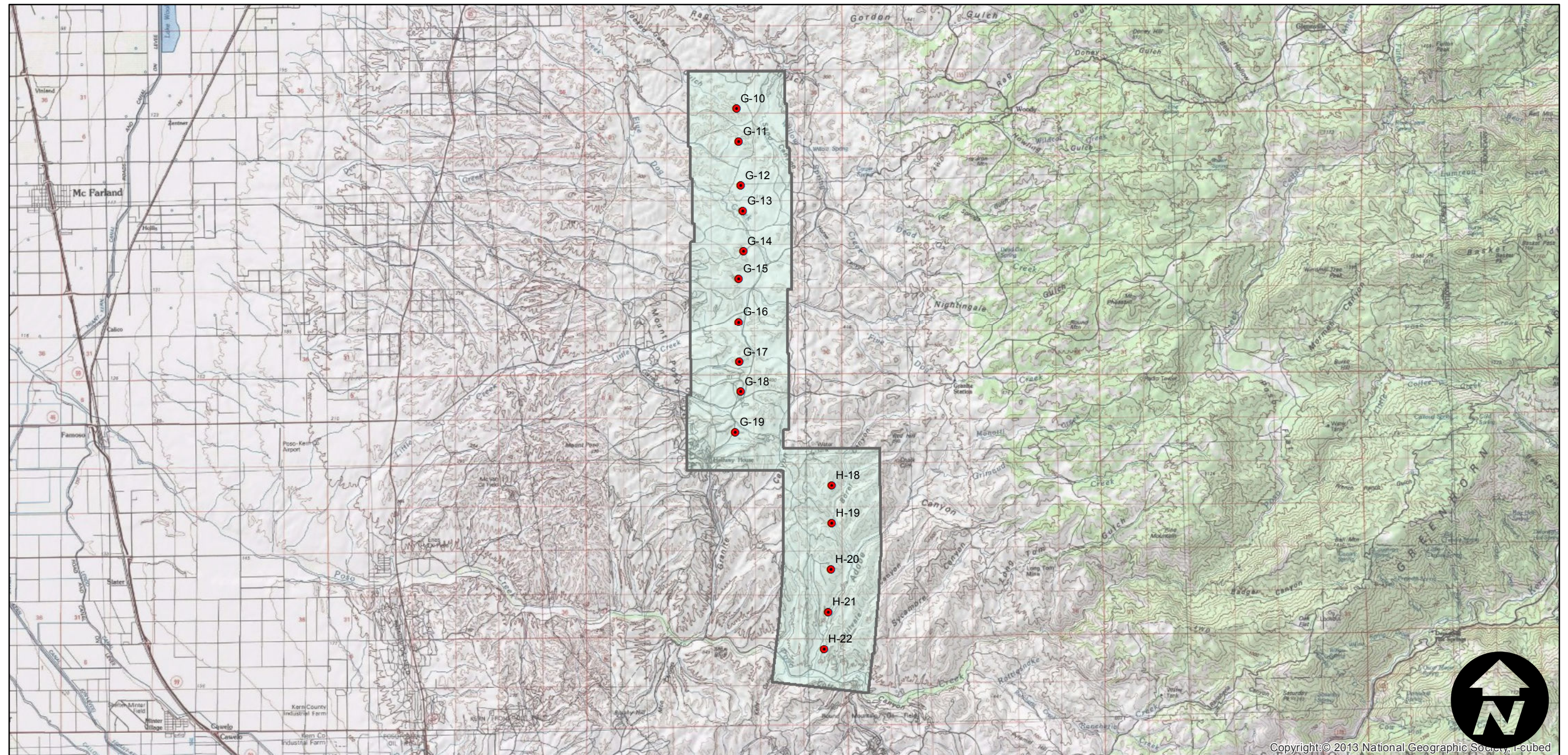
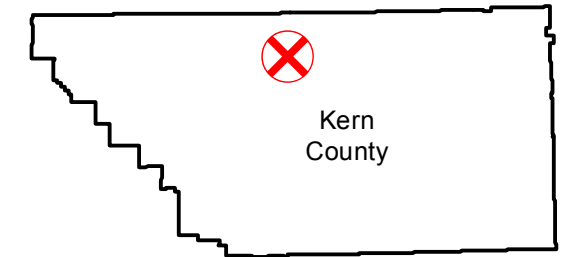
# C-84 (1:15.6K)

Counties: Kern  
Flight date(s): 07-01-1927 to 07-31-1927  
Scale: 1:15,600  
Overlap: 60%

Complete Metadata:  
<http://www.library.ucsb.edu/mil/aerial-photography-tools>

Note: Mount Poso oil field, Garces Highway to Poso Creek.  
Frames F-4 through F-6; G-10 through G-19; H-18 through H-22. Negatives are copies made from original nitrate film.  
Overlap within flightline is not consistent. Imagery acquired from Teledyne, Inc., 1986.

## FLIGHT LOCATION



0 3 6 12 Miles

Index to Aerial Photography  
Page 1 of 1

Scale of this index: 1:150,000



Copyright © 2013 National Geographic Society, I-cubed