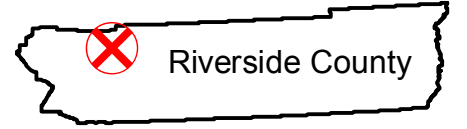


# C-7373

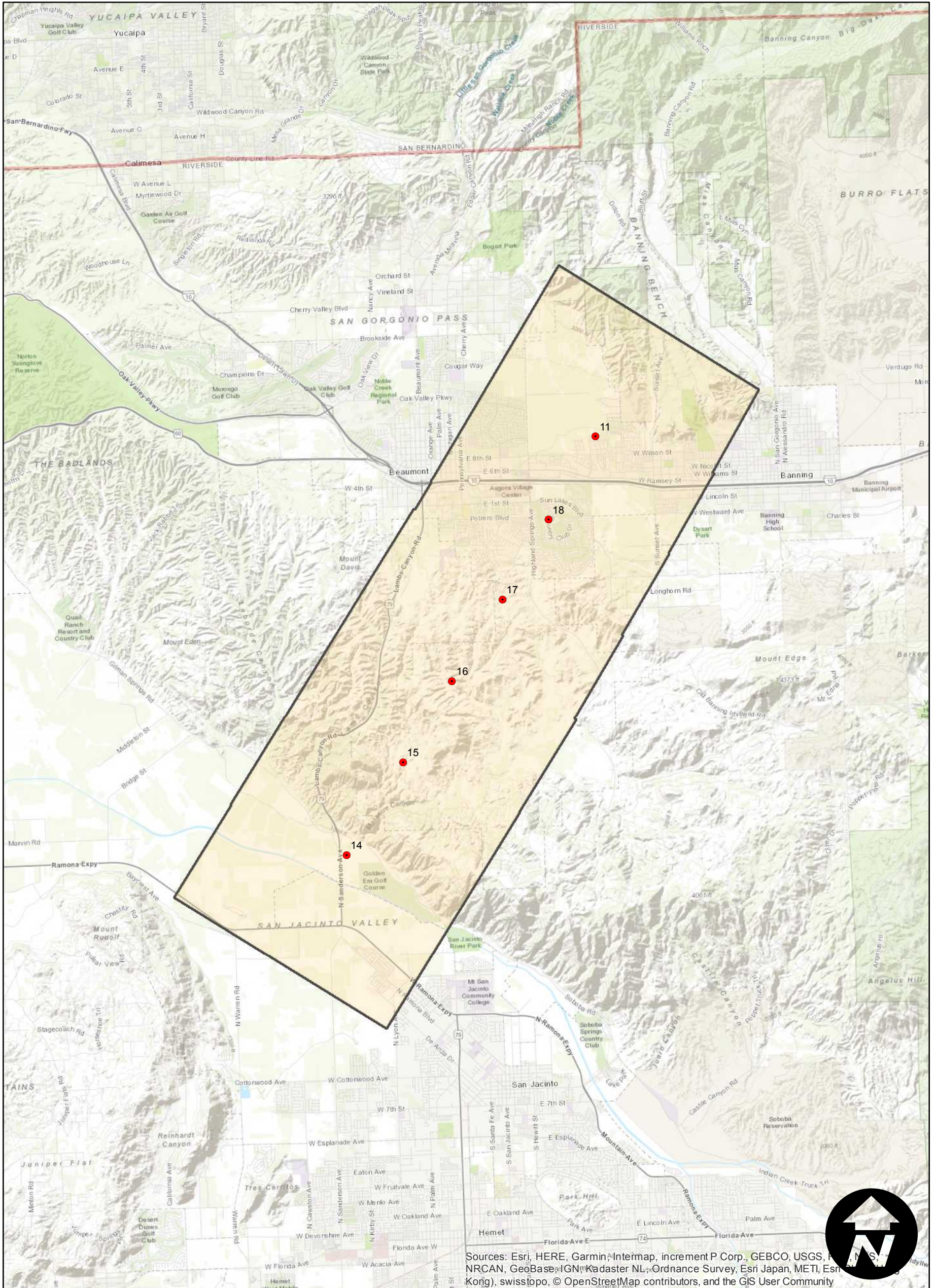
Counties: Riverside  
Flight date(s): 09-23-1941  
Scale: 1:24,000  
Overlap: 60%

Note: Banning and Beaumont area: Vicinity of Beaumont Avenue/SR 79 from US-10 to Gilman Hot Springs. Imagery acquired January 2013.

## FLIGHT LOCATION



Complete Metadata:  
<https://www.library.ucsb.edu/src/airphotos/aerial-photography-information>



Sources: Esri, HERE, Garmin, Intermap, increment P Corp., GEBCO, USGS, NRCAN, GeoBase, IGN, Kadaster NL, Ordnance Survey, Esri Japan, METI, Esri (Korea), swisstopo, © OpenStreetMap contributors, and the GIS User Community

