

C-7347

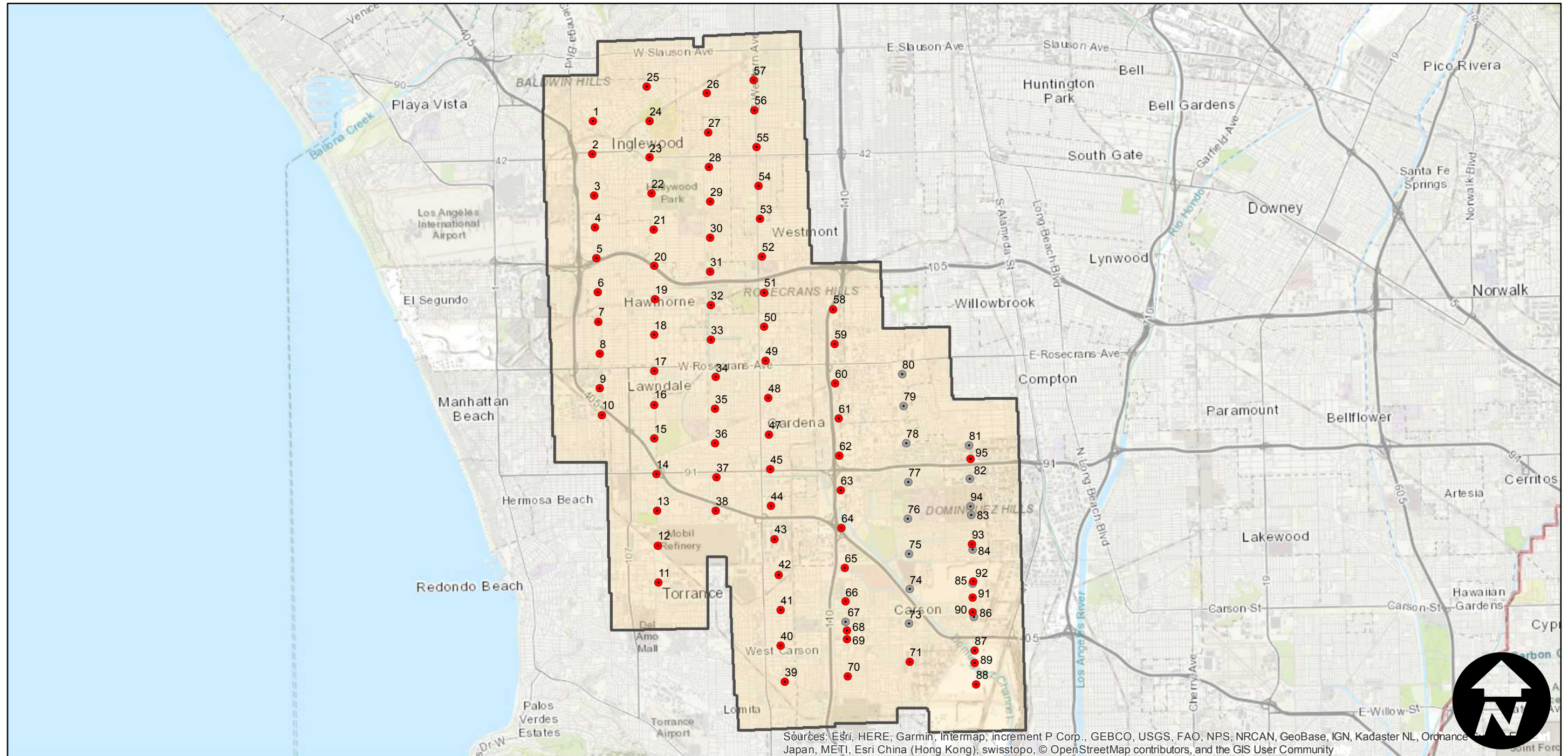
Counties: Los Angeles
Flight date(s): 08-30-1941
Scale: 1:12,000
Overlap: 60-90%

Complete Metadata:
<https://www.library.ucsb.edu/src/airphotos/aerial-photography-information>

Note: Inglewood to Carson. Includes coverage of Hawthorne, Lawndale, and Gardena. Transparent positives acquired from Teledyne, Inc., 1986; prints acquired from Whittier College, January 2013.

- MIL owns frame
- MIL does not own frame

FLIGHT LOCATION



Sources: Esri, HERE, Garmin, Intermap, increment P Corp., GEBCO, USGS, FAO, NPS, NRCAN, GeoBase, IGN, Kadaster NL, Ordnance Survey, Esri Japan, METI, Esri China (Hong Kong), swisstopo, © OpenStreetMap contributors, and the GIS User Community

0 2 4 8 Miles

Scale of this index: 1:125,000