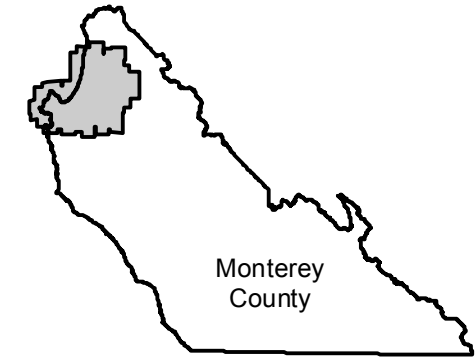


C-7254

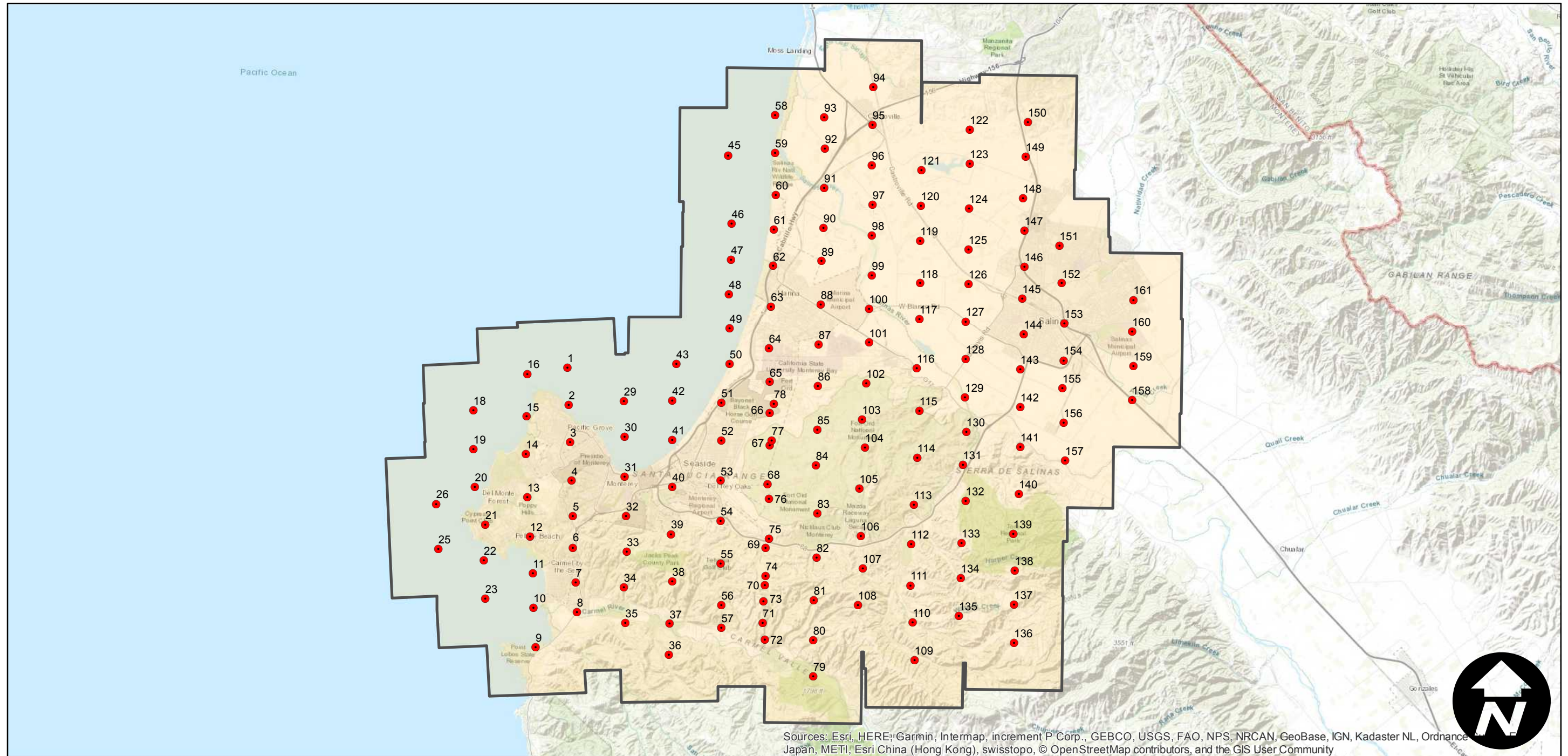
Counties: Monterey
Flight date(s): 11-22-1941
Scale: 1:20,000
Overlap: 60-80%

Note: Carmel, Carmel Valley, Castroville, Monterey, Salinas, and vicinity. Imagery acquired 1986 and 2013. Nitrate negatives scanned, November 2015.

FLIGHT LOCATION



Complete Metadata:
<https://www.library.ucsb.edu/src/airphotos/aerial-photography-information>



Sources: Esri, HERE, Garmin, Intermap, increment P Corp., GEBCO, USGS, FAO, NPS, NRCAN, GeoBase, IGN, Kadaster NL, Ordnance Survey, Esri Japan, METI, Esri China (Hong Kong), swisstopo, © OpenStreetMap contributors, and the GIS User Community

