

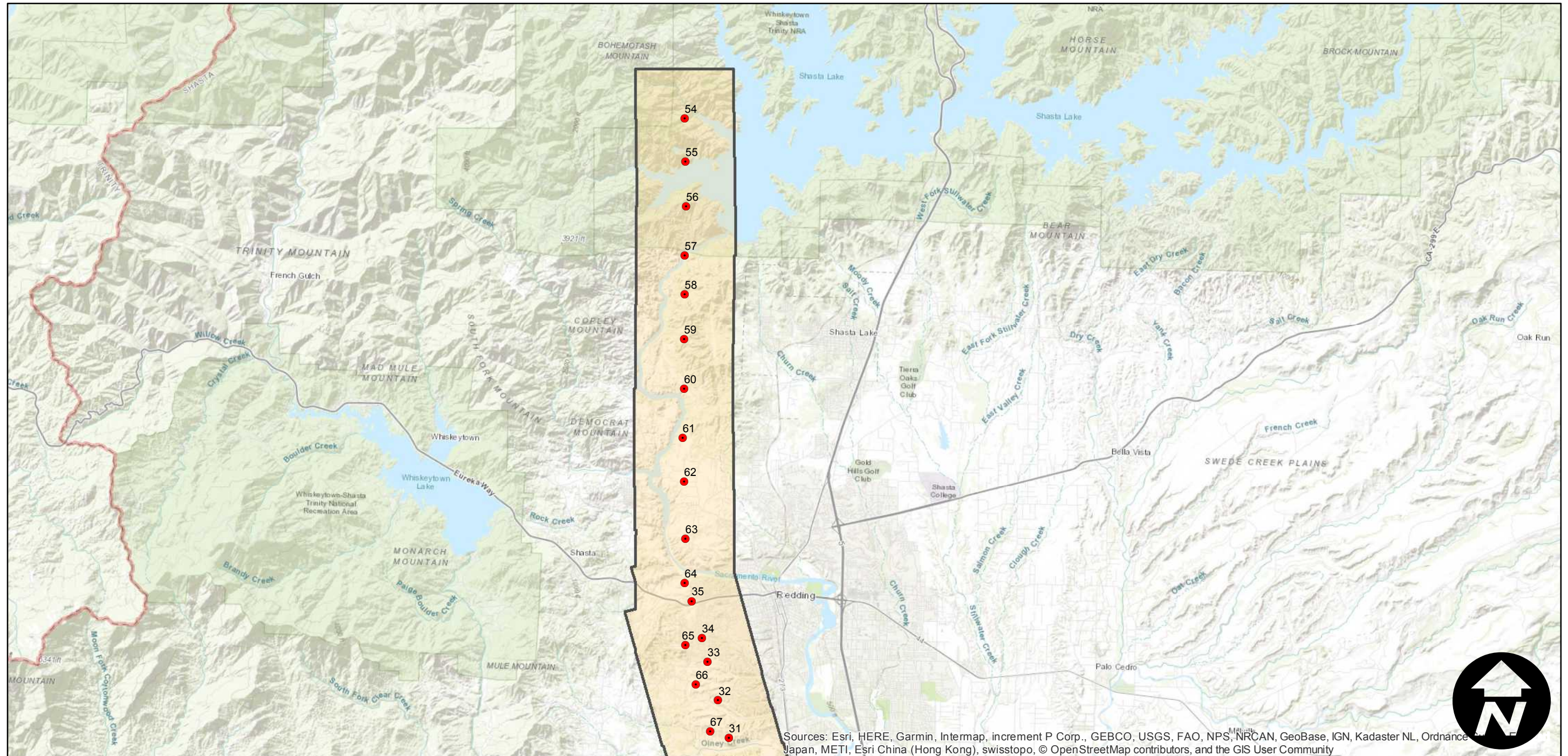
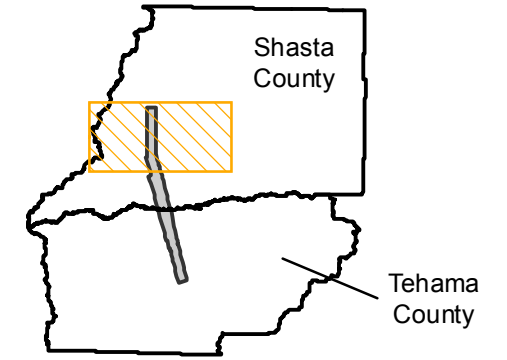
C-7230

Counties: Shasta, Tehama
Flight date(s): 07-06-1941
Scale: 1:18,000
Overlap: 60-75%

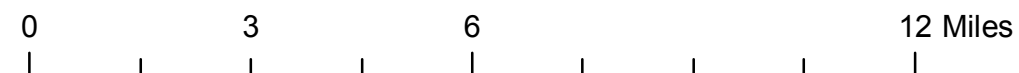
Complete Metadata:
<https://www.library.ucsb.edu/src/airphotos/aerial-photography-information>

Note: Area just west of Red Bluff to Shasta Dam.
Imagery acquired January 2013. Nitrate negatives scanned, November 2015.

FLIGHT LOCATION



Sources: Esri, HERE, Garmin, Intermap, increment P Corp., GEBCO, USGS, FAO, NPS, NRCAN, GeoBase, IGN, Kadaster NL, Ordnance Survey, Esri Japan, METI, Esri China (Hong Kong), swisstopo, © OpenStreetMap contributors, and the GIS User Community

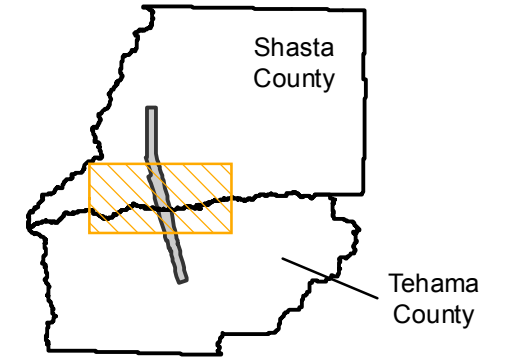


C-7230

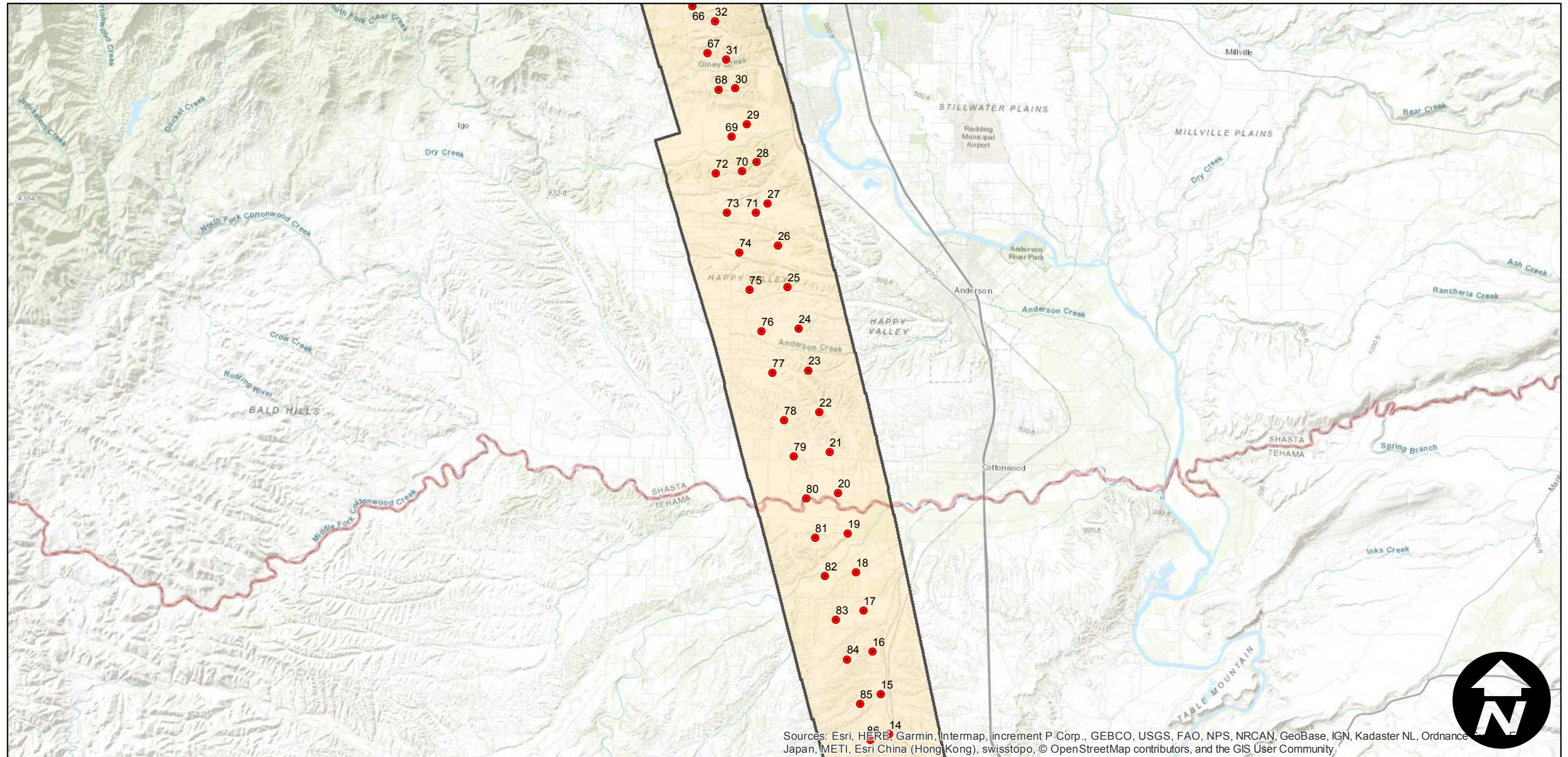
Counties: Shasta, Tehama
Flight date(s): 07-06-1941
Scale: 1:18,000
Overlap: 60-75%

Note: Area just west of Red Bluff to Shasta Dam.
Imagery acquired January 2013. Nitrate negatives scanned, November 2015.

FLIGHT LOCATION



Complete Metadata:
<https://www.library.ucsb.edu/src/airphotos/aerial-photography-information>



Sources: Esri, HERE, Garmin, Intermap, increment P Corp., GEBCO, USGS, FAO, NPS, NRCAN, GeoBase, IGN, Kadaster NL, Ordnance Survey, Esri China (Hong Kong), Swisstopo, © OpenStreetMap contributors, and the GIS User Community

0 3 6 12 Miles

Index to Aerial Photography
Page 2 of 3

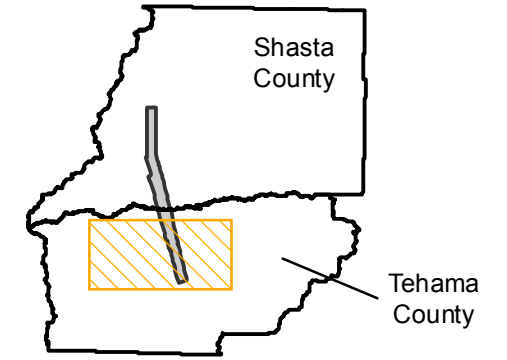
Scale of this index: 1:165,000

C-7230

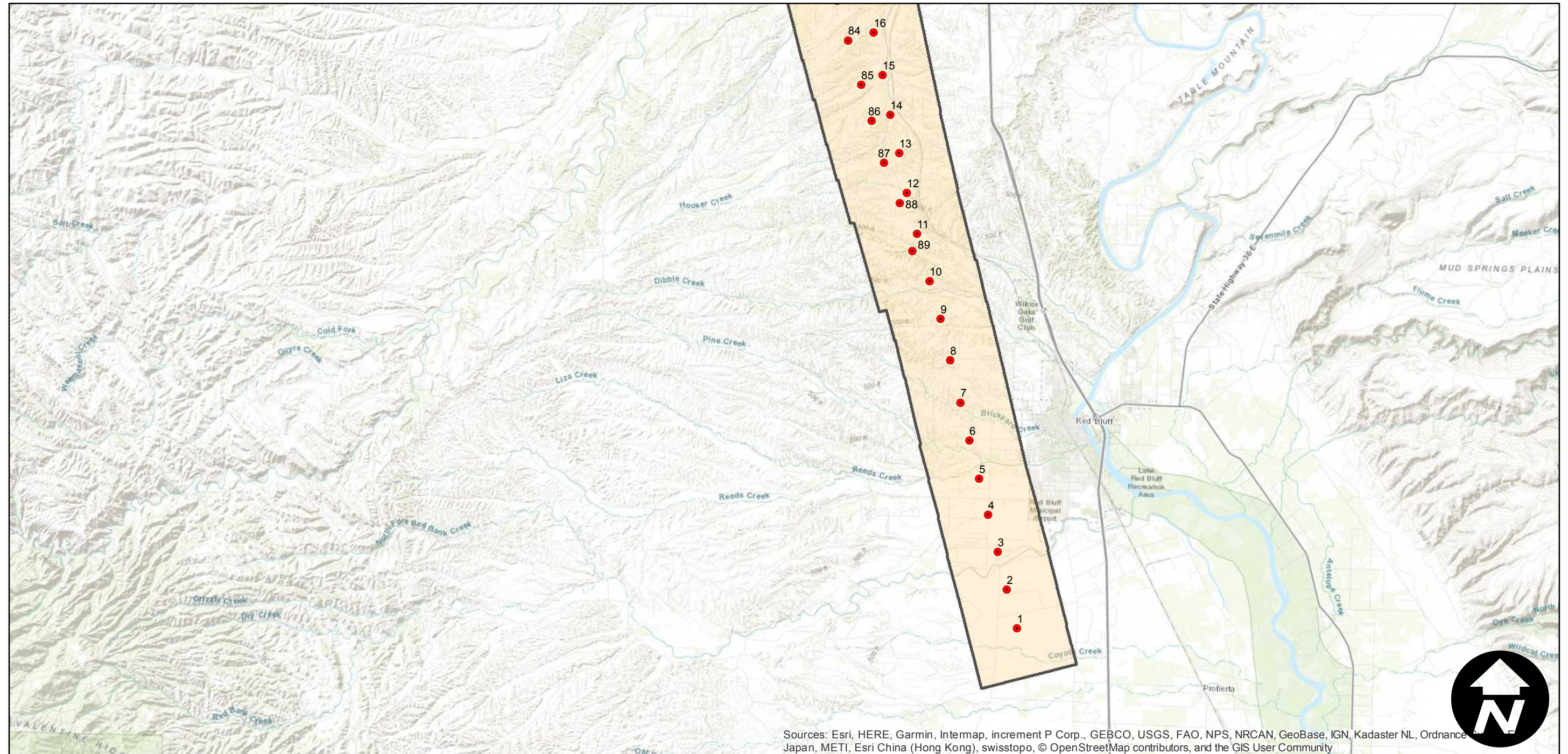
Counties: Shasta, Tehama
Flight date(s): 07-06-1941
Scale: 1:18,000
Overlap: 60-75%

Note: Area just west of Red Bluff to Shasta Dam.
Imagery acquired January 2013. Nitrate negatives scanned, November 2015.

FLIGHT LOCATION



Complete Metadata:
<https://www.library.ucsb.edu/src/airphotos/aerial-photography-information>



Sources: Esri, HERE, Garmin, Intermap, increment P Corp., GEBCO, USGS, FAO, NPS, NRCAN, GeoBase, IGN, Kadaster NL, Ordnance Survey, Esri Japan, METI, Esri China (Hong Kong), swisstopo, © OpenStreetMap contributors, and the GIS User Community

0 3 6 12 Miles

Index to Aerial Photography
Page 3 of 3

Scale of this index: 1:165,000