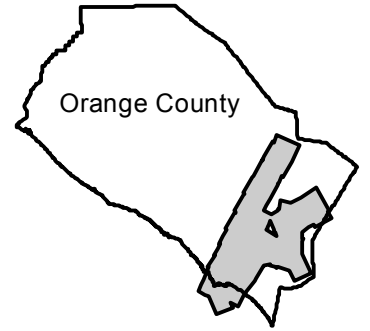


C-703A

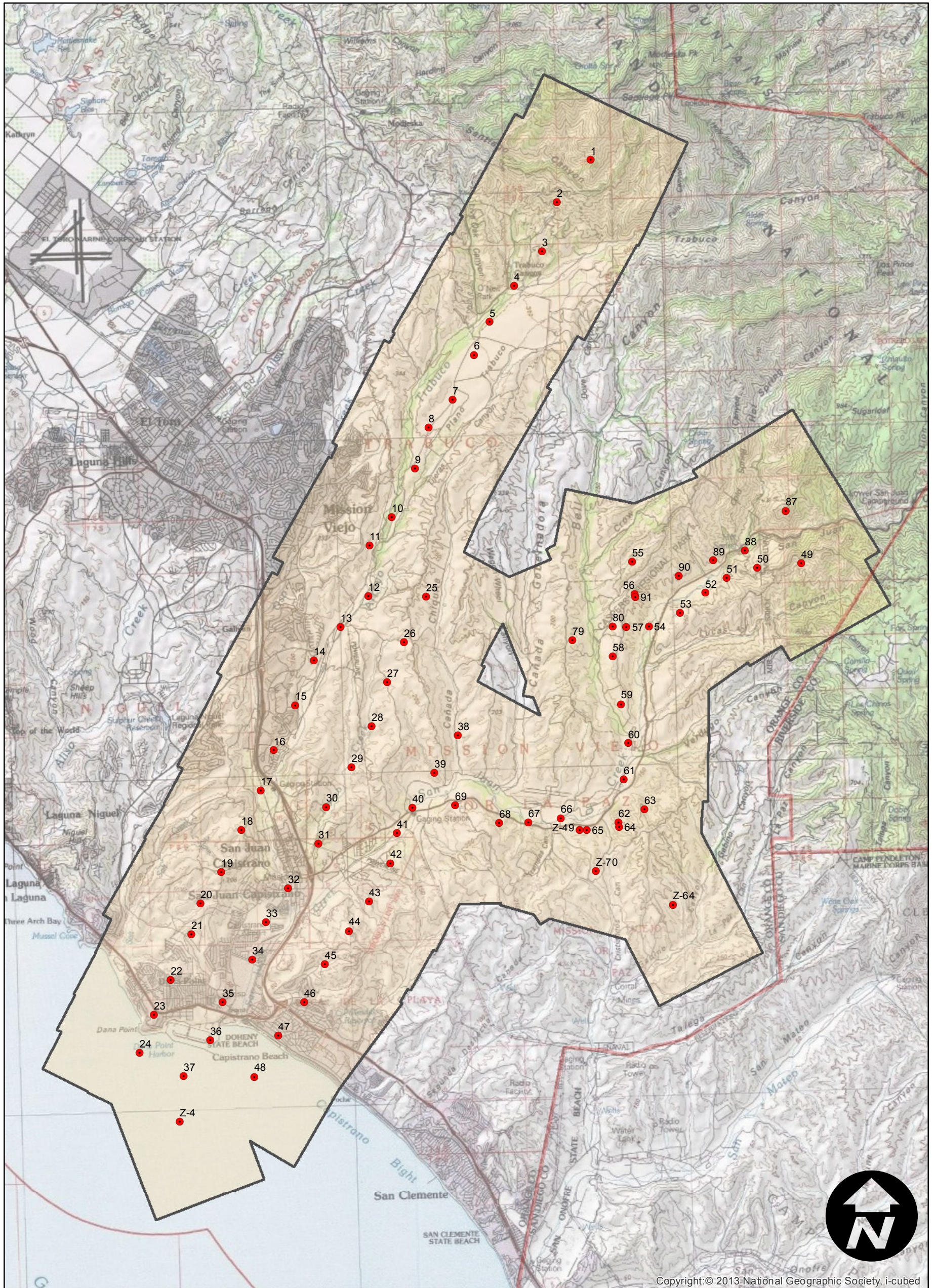
Counties: Orange
Flight date(s): 11-01-1929 to 11-30-1929
Scale: 1:18,000
Overlap: 50%

Note: Vicinity of San Juan Capistrano and Dana Point. Negatives are copies made from original nitrate film. Imagery acquired from Teledyne, Inc., 1986 and Whittier College, January 2013. Nitrate negatives scanned, 2015.

FLIGHT LOCATION



Complete Metadata:
<http://www.library.ucsb.edu/mil/aerial-photography-tools>



Copyright: © 2013 National Geographic Society, i-cubed

0 1 2 4 Miles

Index to Aerial Photography
Page 1 of 1

Scale of this index: 1:115,000