

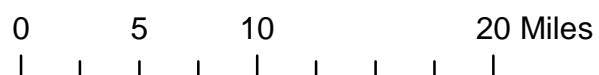
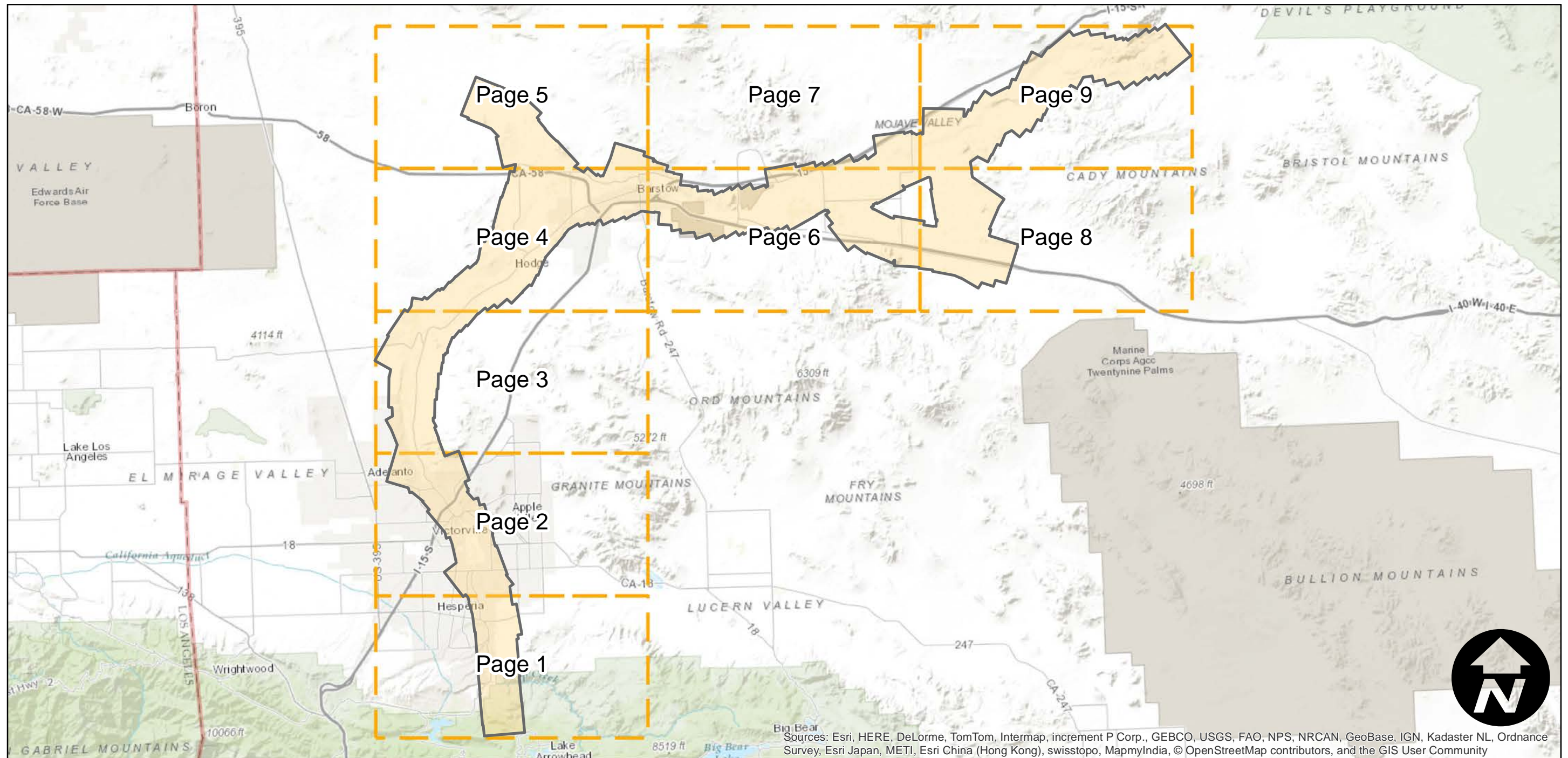
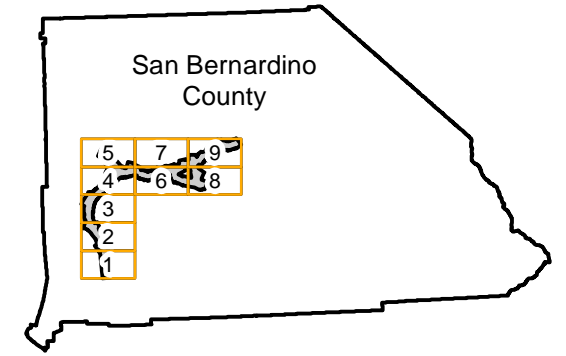
C-679

Counties: San Bernardino
Flight date(s): 10-01-1929 to 10-31-1929
Scale: 1:20,400
Overlap: 50-60%

Complete Metadata:
<http://www.library.ucsb.edu/mil/aerial-photography-tools>

Note: Mojave River. Acquired from Whittier College,
January 2013. Nitrate negatives scanned, 2015.

FLIGHT LOCATION



Index to Aerial Photography
Page Key

Scale of this index: 1:515,000

Sources: Esri, HERE, DeLorme, TomTom, Intermap, increment P Corp., GEBCO, USGS, FAO, NPS, NRCAN, GeoBase, IGN, Kadaster NL, Ordnance Survey, Esri Japan, METI, Esri China (Hong Kong), swisstopo, MapmyIndia, © OpenStreetMap contributors, and the GIS User Community

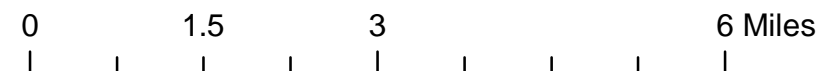
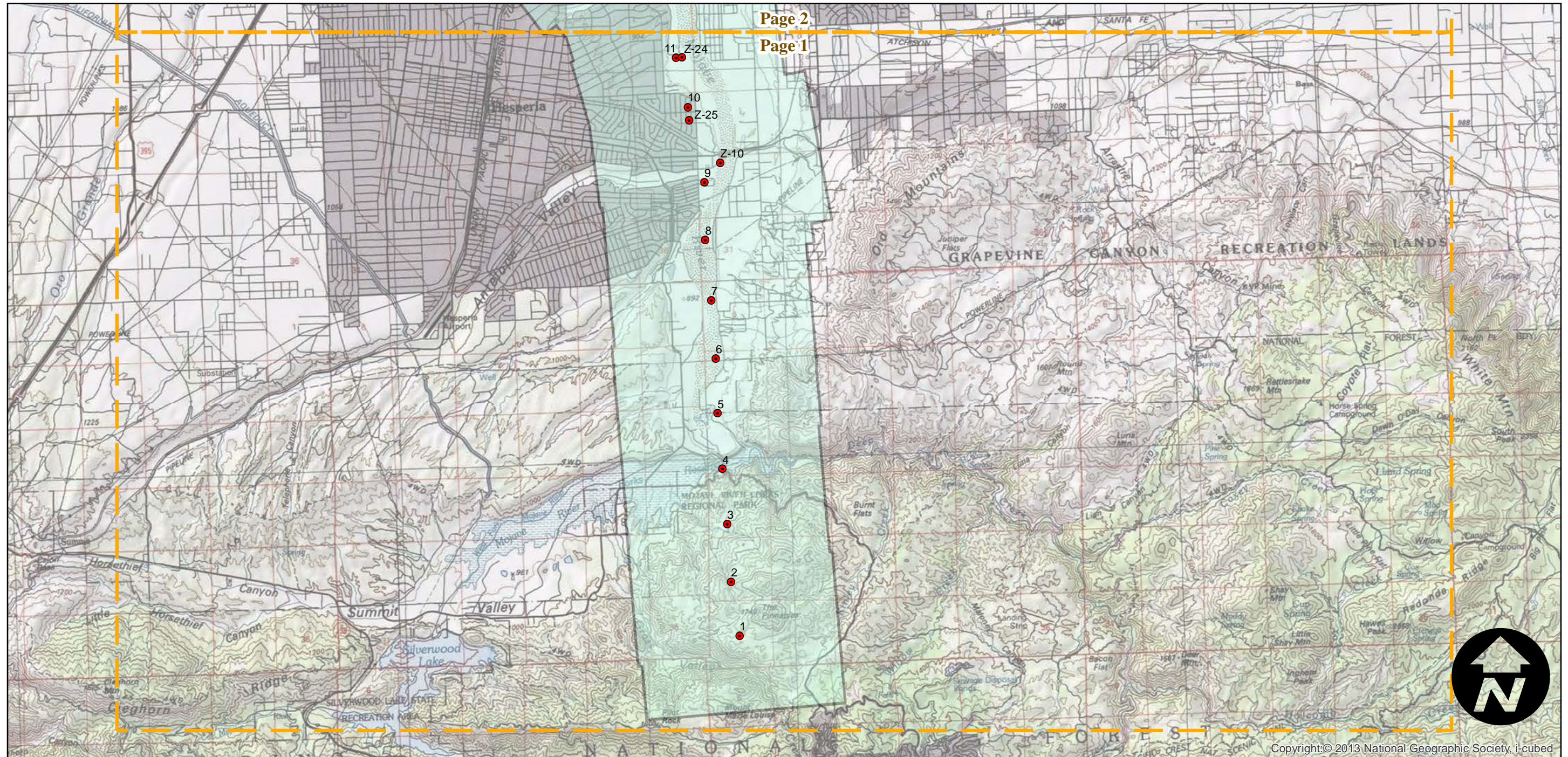
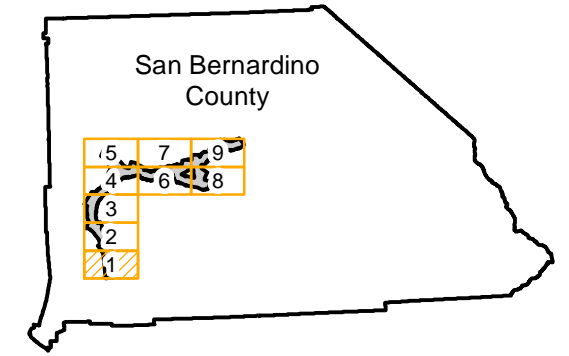
C-679

Counties: San Bernardino
Flight date(s): 10-01-1929 to 10-31-1929
Scale: 1:20,400
Overlap: 50-60%

Complete Metadata:
<http://www.library.ucsb.edu/mil/aerial-photography-tools>

Note: Mojave River. Acquired from Whittier College,
January 2013. Nitrate negatives scanned, 2015.

FLIGHT LOCATION



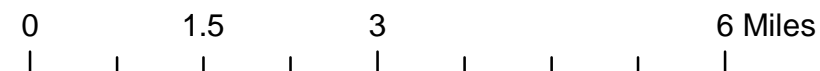
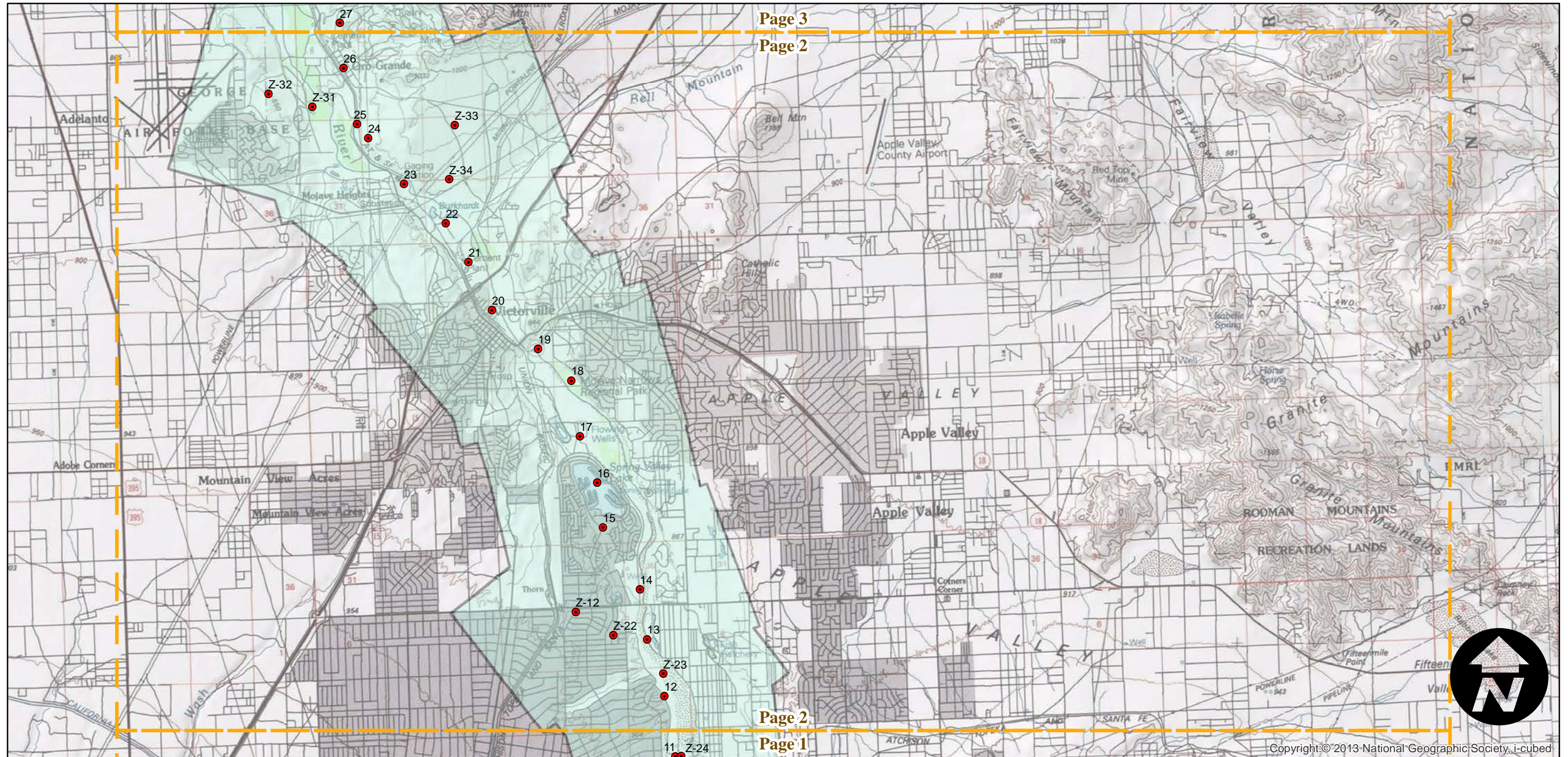
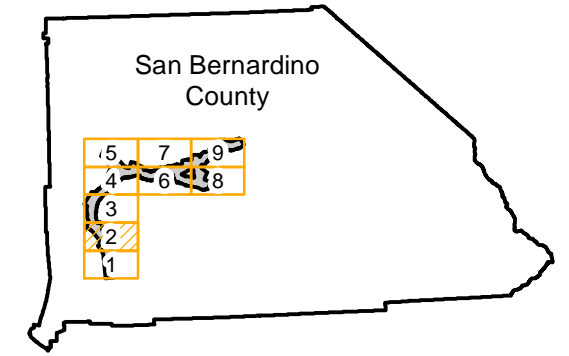
C-679

Counties: San Bernardino
Flight date(s): 10-01-1929 to 10-31-1929
Scale: 1:20,400
Overlap: 50-60%

Complete Metadata:
<http://www.library.ucsb.edu/mil/aerial-photography-tools>

Note: Mojave River. Acquired from Whittier College,
January 2013. Nitrate negatives scanned, 2015.

FLIGHT LOCATION



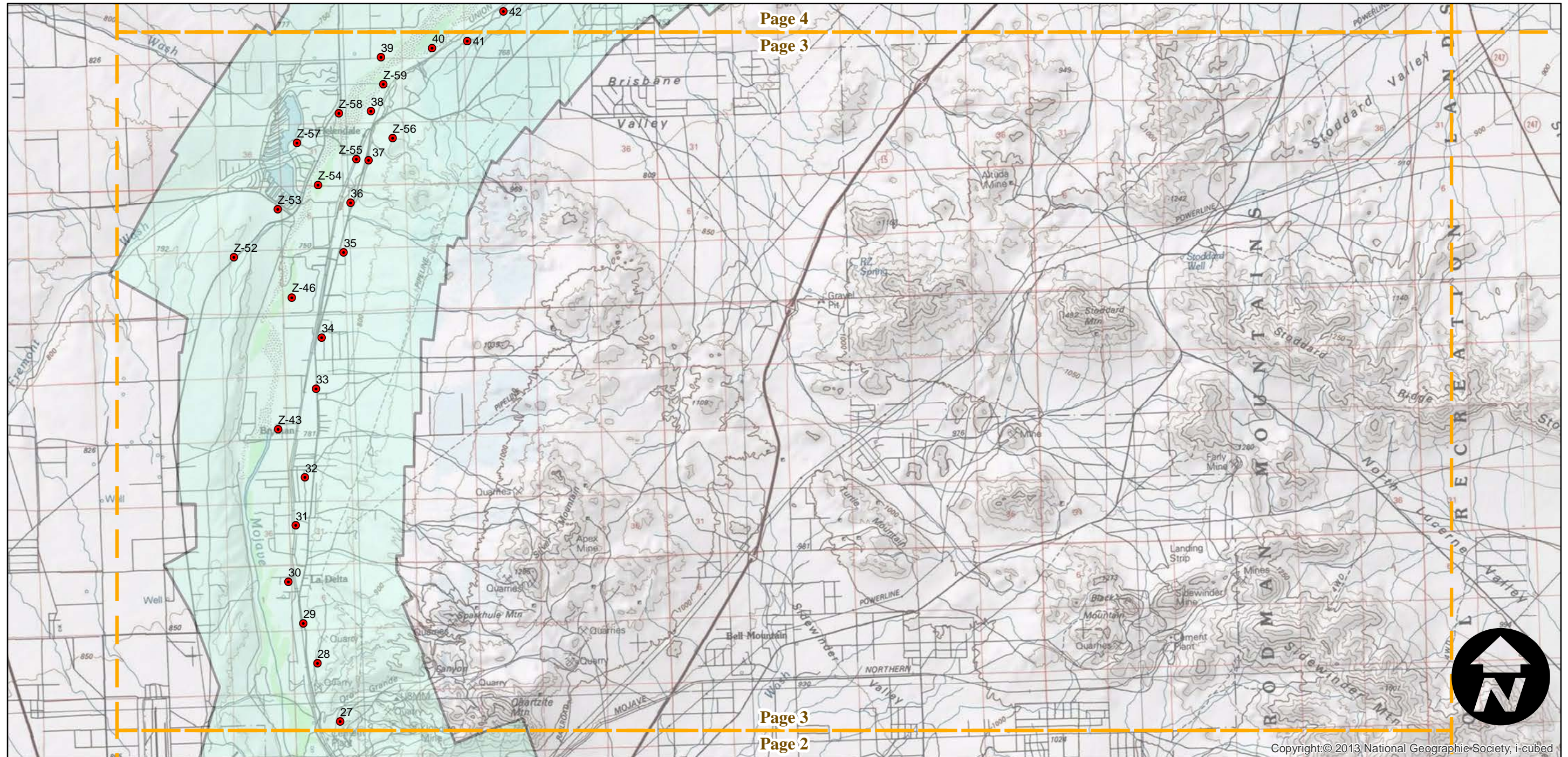
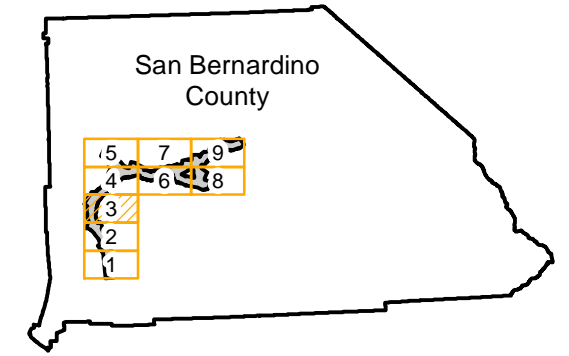
C-679

Counties: San Bernardino
Flight date(s): 10-01-1929 to 10-31-1929
Scale: 1:20,400
Overlap: 50-60%

Complete Metadata:
<http://www.library.ucsb.edu/mil/aerial-photography-tools>

Note: Mojave River. Acquired from Whittier College,
January 2013. Nitrate negatives scanned, 2015.

FLIGHT LOCATION



0 1.5 3 6 Miles

Index to Aerial Photography
Page 3 of 9

Scale of this index: 1:105,000

Copyright:© 2013 National Geographic Society, i-cubed

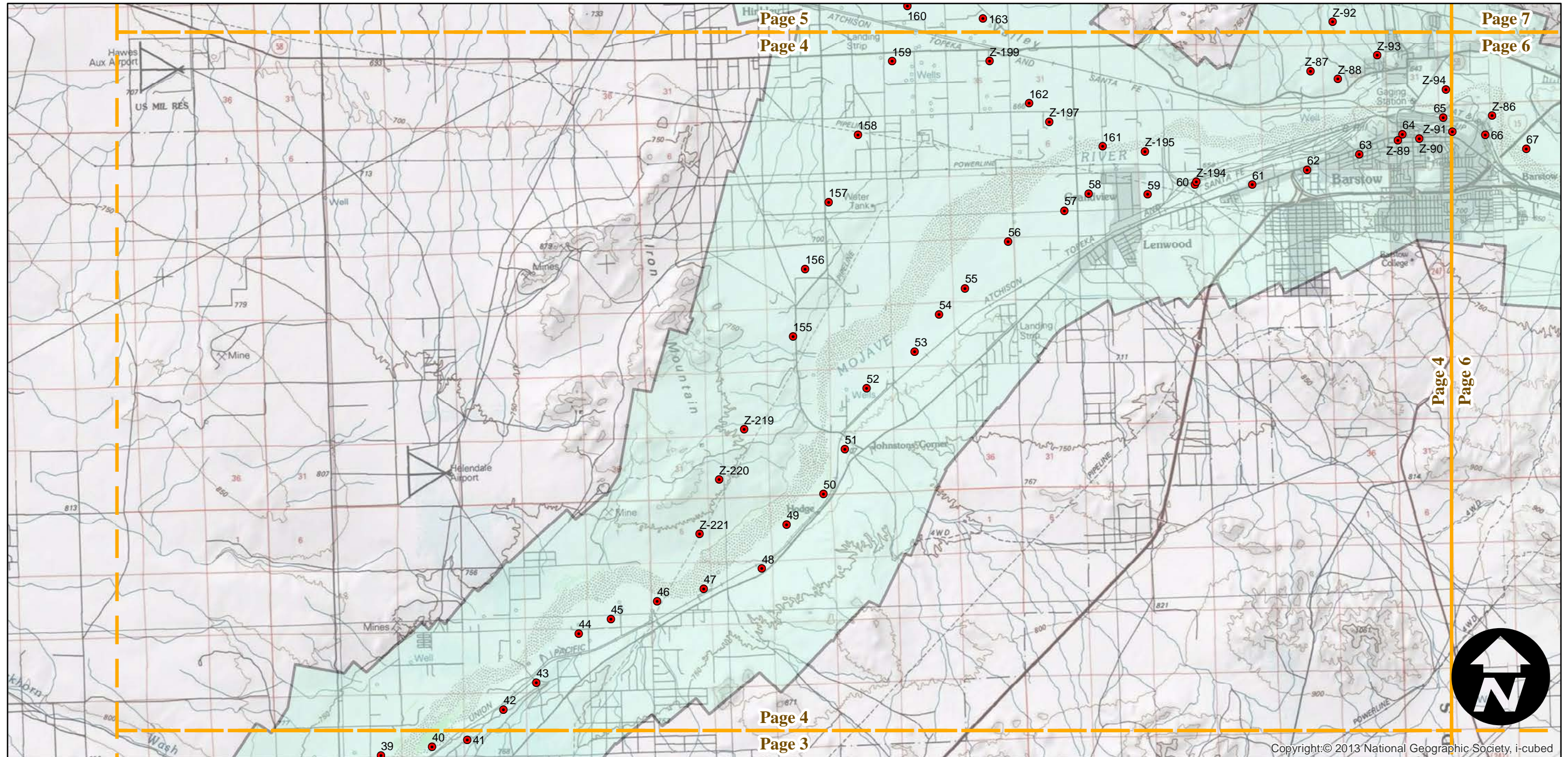
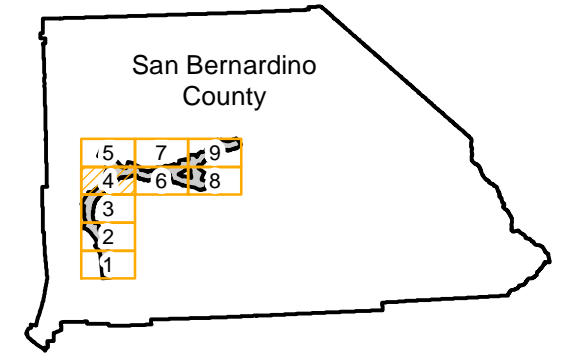
C-679

Counties: San Bernardino
Flight date(s): 10-01-1929 to 10-31-1929
Scale: 1:20,400
Overlap: 50-60%

Complete Metadata:
<http://www.library.ucsb.edu/mil/aerial-photography-tools>

Note: Mojave River. Acquired from Whittier College,
January 2013. Nitrate negatives scanned, 2015.

FLIGHT LOCATION



0 1.5 3 6 Miles

Index to Aerial Photography
Page 4 of 9

Scale of this index: 1:105,000

Copyright:© 2013 National Geographic Society, i-cubed

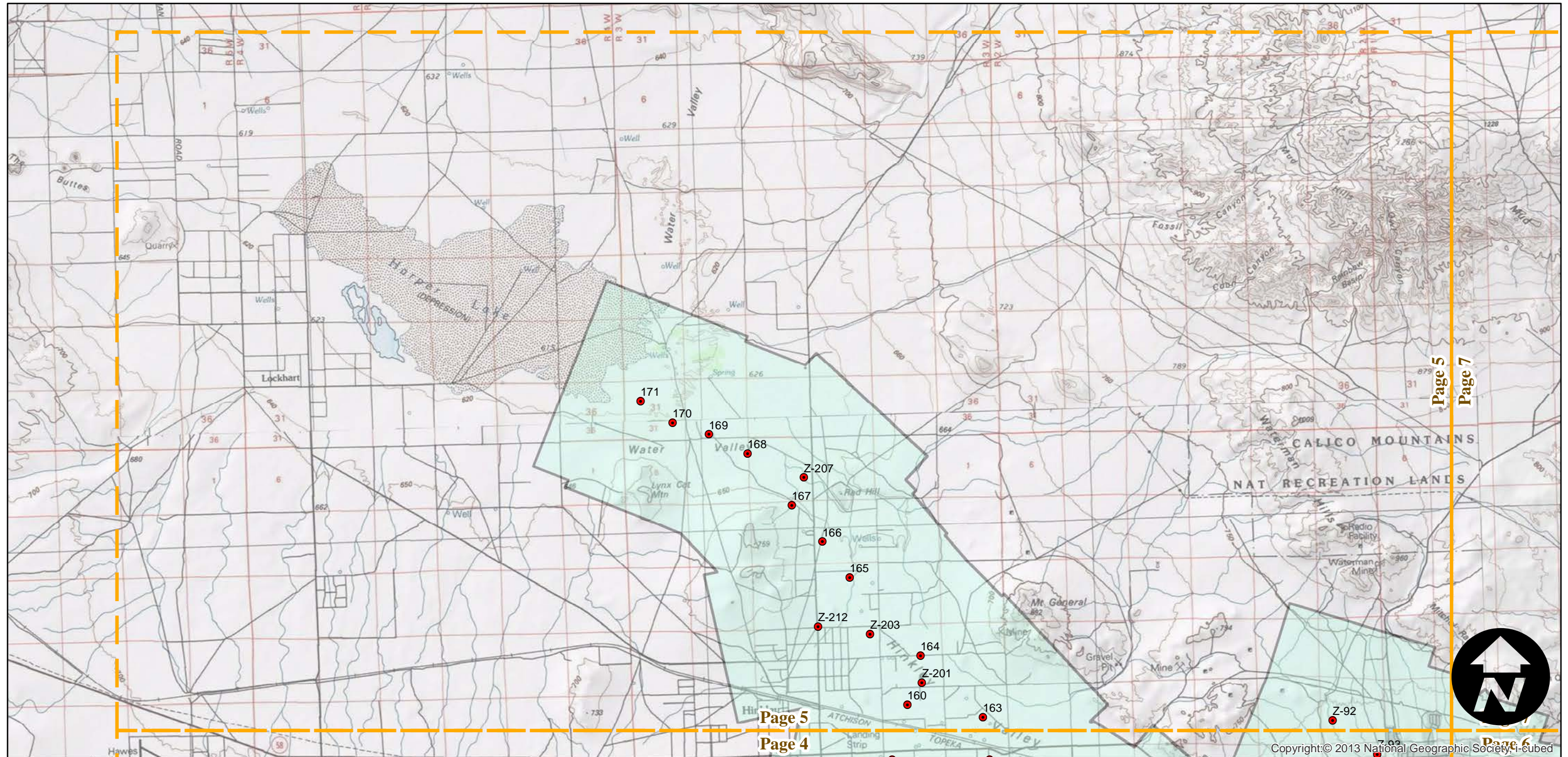
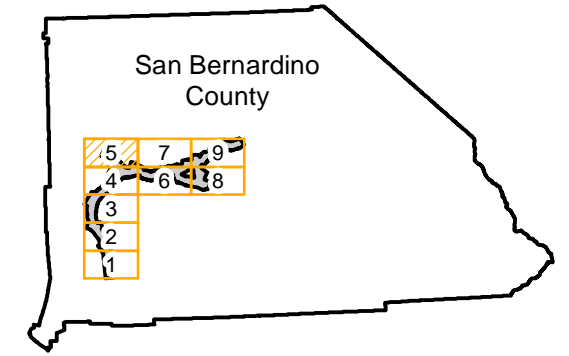
C-679

Counties: San Bernardino
Flight date(s): 10-01-1929 to 10-31-1929
Scale: 1:20,400
Overlap: 50-60%

Complete Metadata:
<http://www.library.ucsb.edu/mil/aerial-photography-tools>

Note: Mojave River. Acquired from Whittier College,
January 2013. Nitrate negatives scanned, 2015.

FLIGHT LOCATION



0 1.5 3 6 Miles

Index to Aerial Photography
Page 5 of 9

Scale of this index: 1:105,000

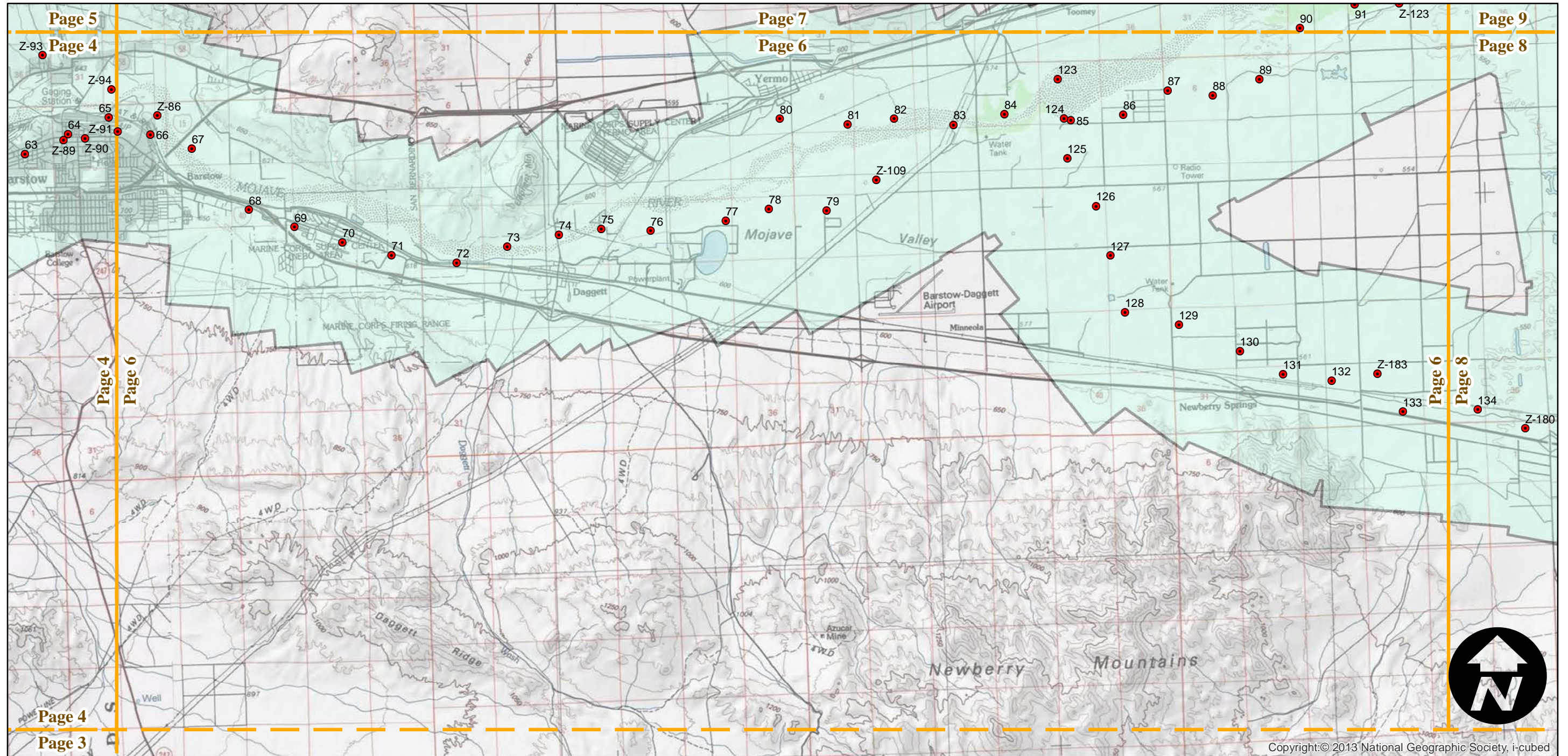
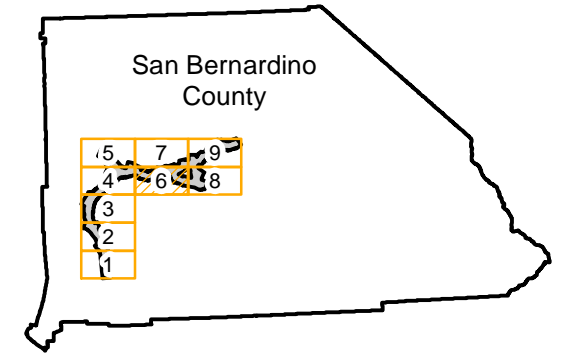
C-679

Counties: San Bernardino
Flight date(s): 10-01-1929 to 10-31-1929
Scale: 1:20,400
Overlap: 50-60%

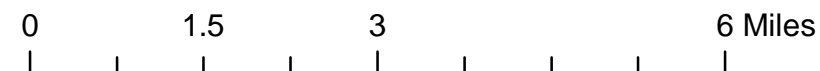
Complete Metadata:
<http://www.library.ucsb.edu/mil/aerial-photography-tools>

Note: Mojave River. Acquired from Whittier College,
January 2013. Nitrate negatives scanned, 2015.

FLIGHT LOCATION



Copyright:© 2013 National Geographic Society, i-cubed



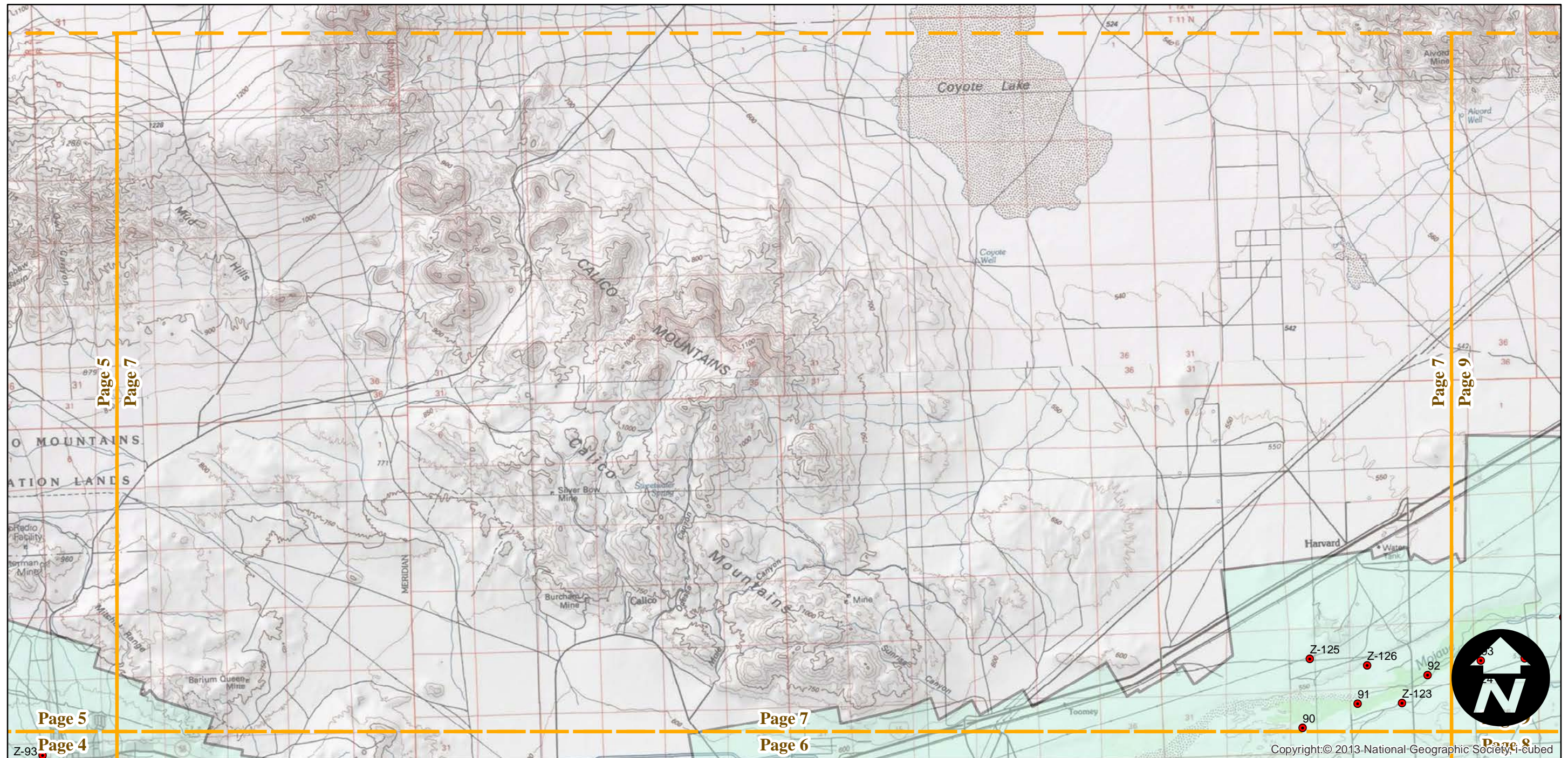
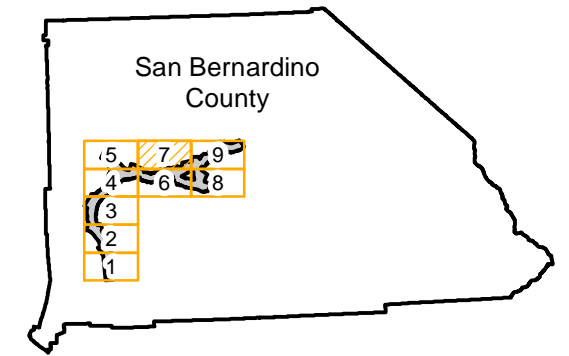
C-679

Counties: San Bernardino
Flight date(s): 10-01-1929 to 10-31-1929
Scale: 1:20,400
Overlap: 50-60%

Complete Metadata:
<http://www.library.ucsb.edu/mil/aerial-photography-tools>

Note: Mojave River. Acquired from Whittier College,
January 2013. Nitrate negatives scanned, 2015.

FLIGHT LOCATION



0 1.5 3 6 Miles

Index to Aerial Photography
Page 7 of 9

Scale of this index: 1:105,000

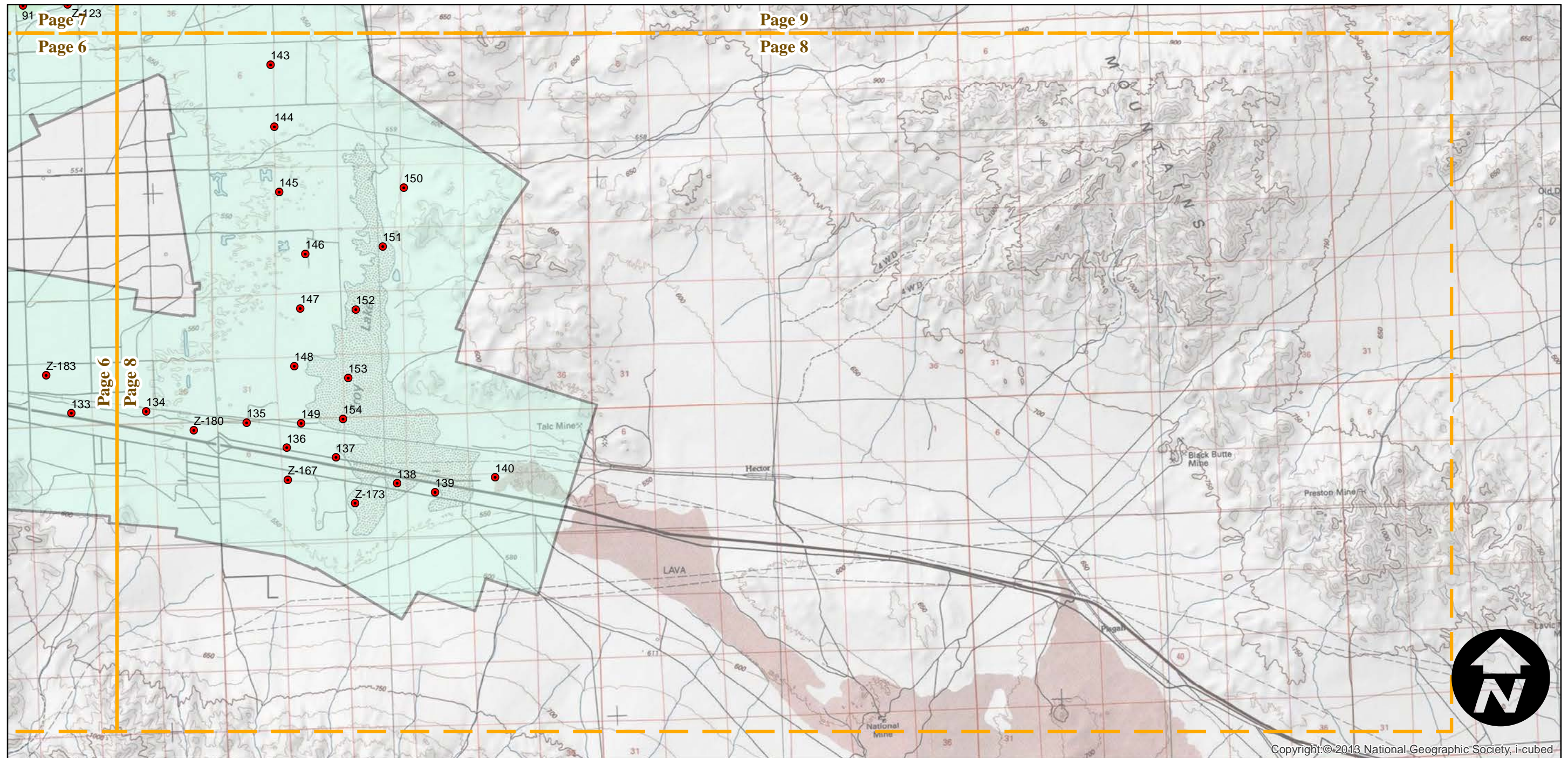
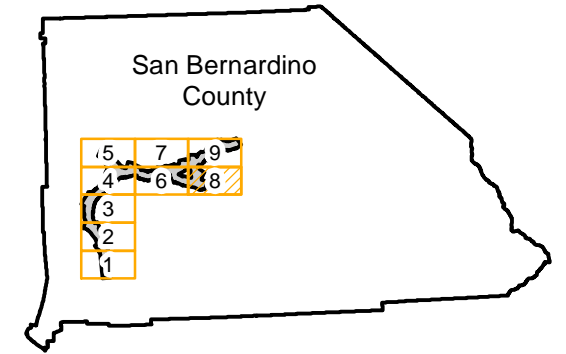
C-679

Counties: San Bernardino
Flight date(s): 10-01-1929 to 10-31-1929
Scale: 1:20,400
Overlap: 50-60%

Complete Metadata:
<http://www.library.ucsb.edu/mil/aerial-photography-tools>

Note: Mojave River. Acquired from Whittier College,
January 2013. Nitrate negatives scanned, 2015.

FLIGHT LOCATION



0 1.5 3 6 Miles

Index to Aerial Photography
Page 8 of 9

Scale of this index: 1:105,000

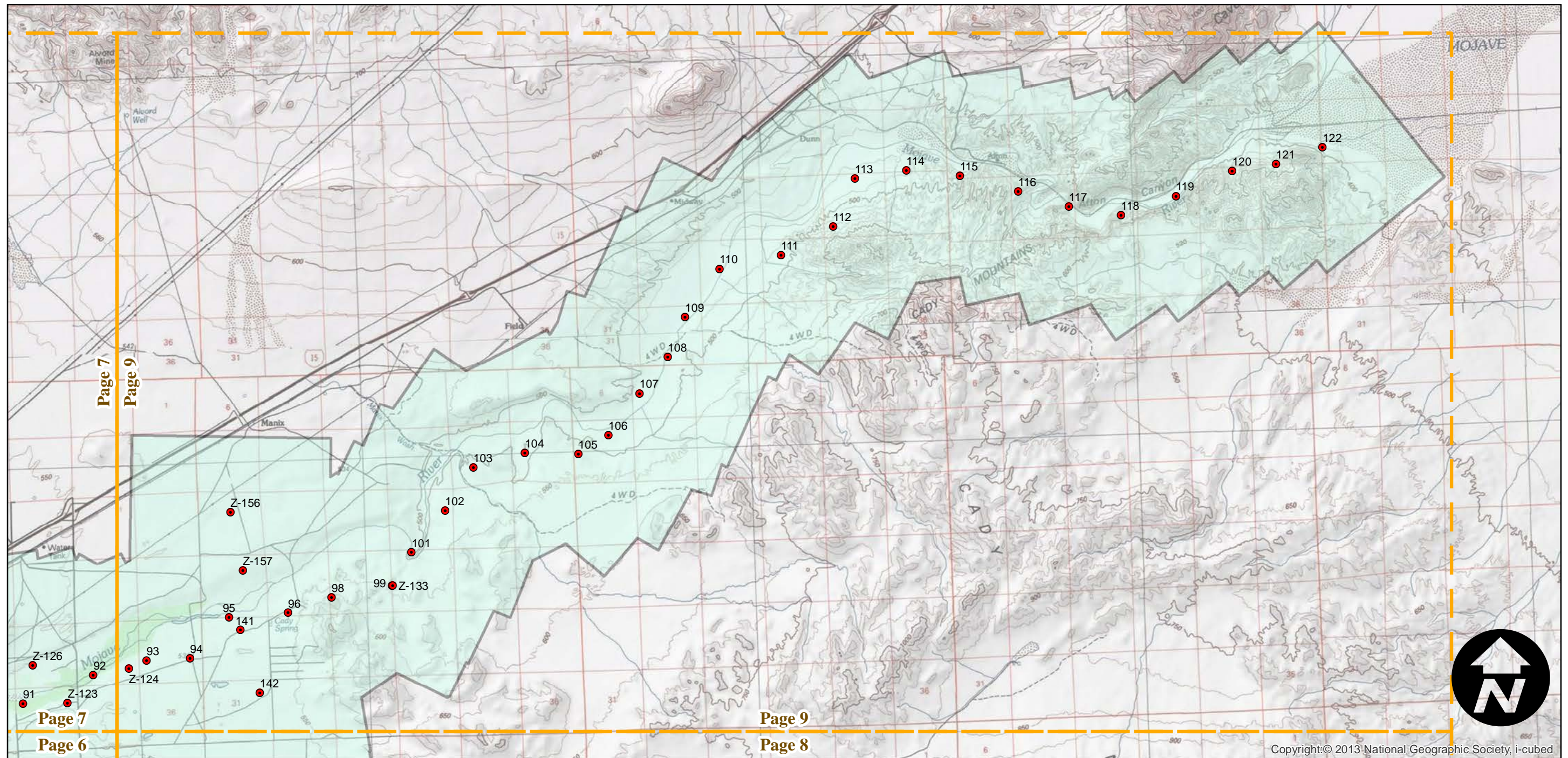
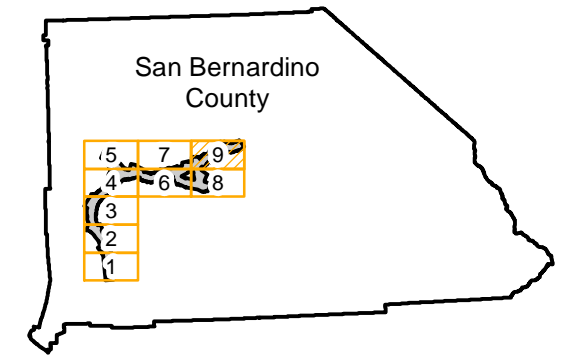
C-679

Counties: San Bernardino
Flight date(s): 10-01-1929 to 10-31-1929
Scale: 1:20,400
Overlap: 50-60%

Complete Metadata:
<http://www.library.ucsb.edu/mil/aerial-photography-tools>

Note: Mojave River. Acquired from Whittier College,
January 2013. Nitrate negatives scanned, 2015.

FLIGHT LOCATION



0 1.5 3 6 Miles

Index to Aerial Photography
Page 9 of 9

Scale of this index: 1:105,000

Copyright:© 2013 National Geographic Society, i-cubed