

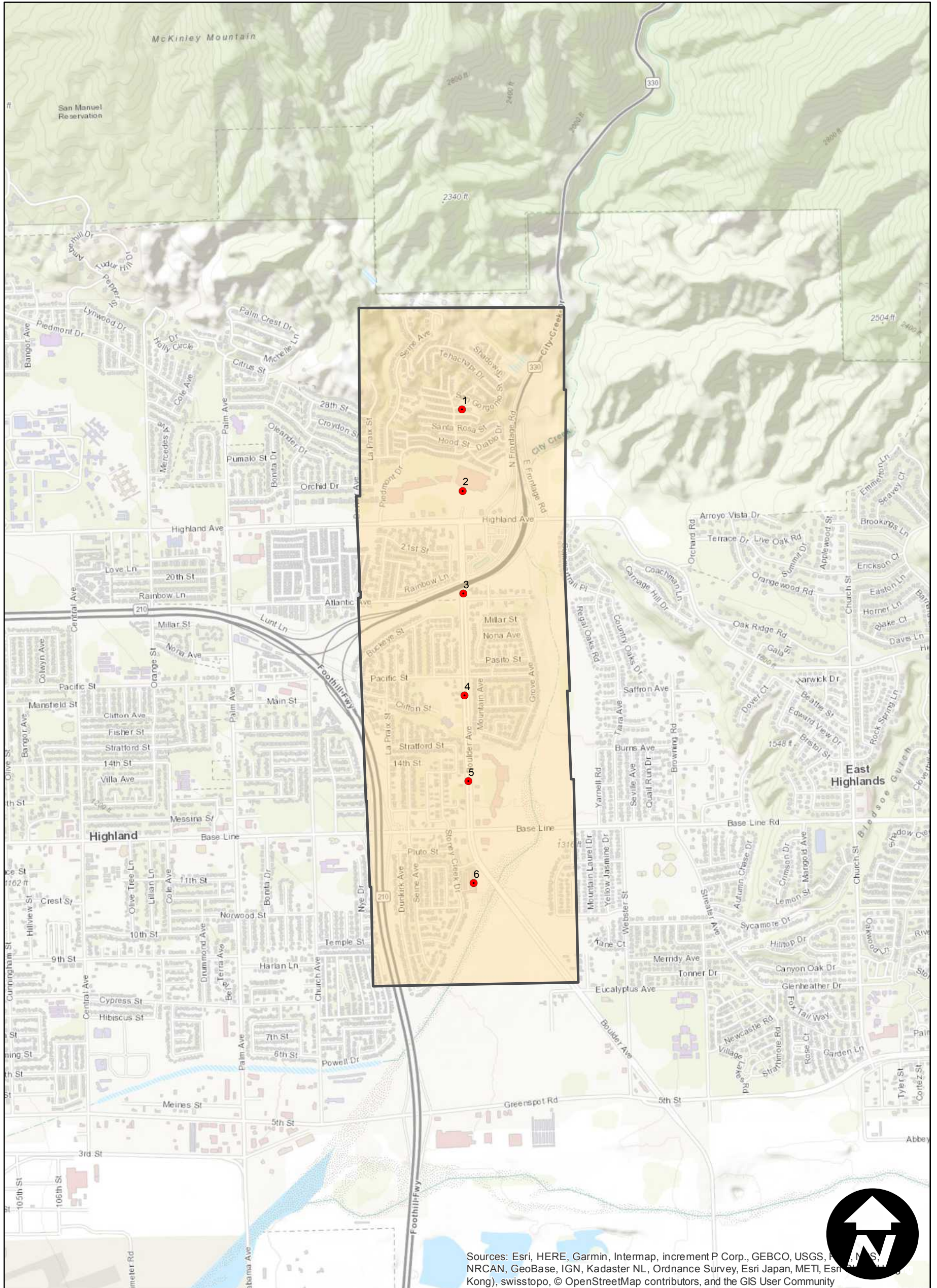
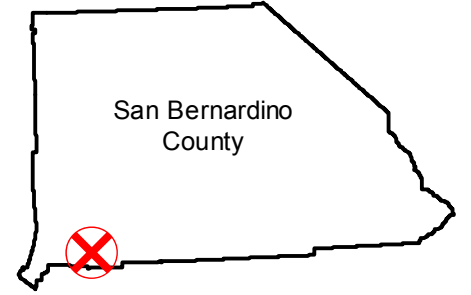
# C-6680

Counties: San Bernardino  
Flight date(s): 10-18-1940  
Scale: 1:4,800  
Overlap: 60%

Complete Metadata:  
<https://www.library.ucsb.edu/src/airphotos/aerial-photography-information>

Note: Highland (formerly Molina):  
vicinity of Boulder Avenue  
between East Highland Avenue  
and Baseline Street. Imagery  
acquired January 2013. Nitrate  
negatives scanned, November  
2015.

## FLIGHT LOCATION



Sources: Esri, HERE, Garmin, Intermap, increment P Corp., GEBCO, USGS, NRCAN, GeoBase, IGN, Kadaster NL, Ordnance Survey, Esri Japan, METI, Esri (China), Swisstopo, © OpenStreetMap contributors, and the GIS User Community

0 0.2 0.4 0.8 Miles

Index to Aerial Photography  
Page 1 of 1

Scale of this index: 1:20,000