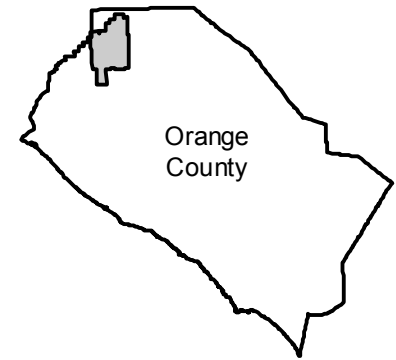


C-6631

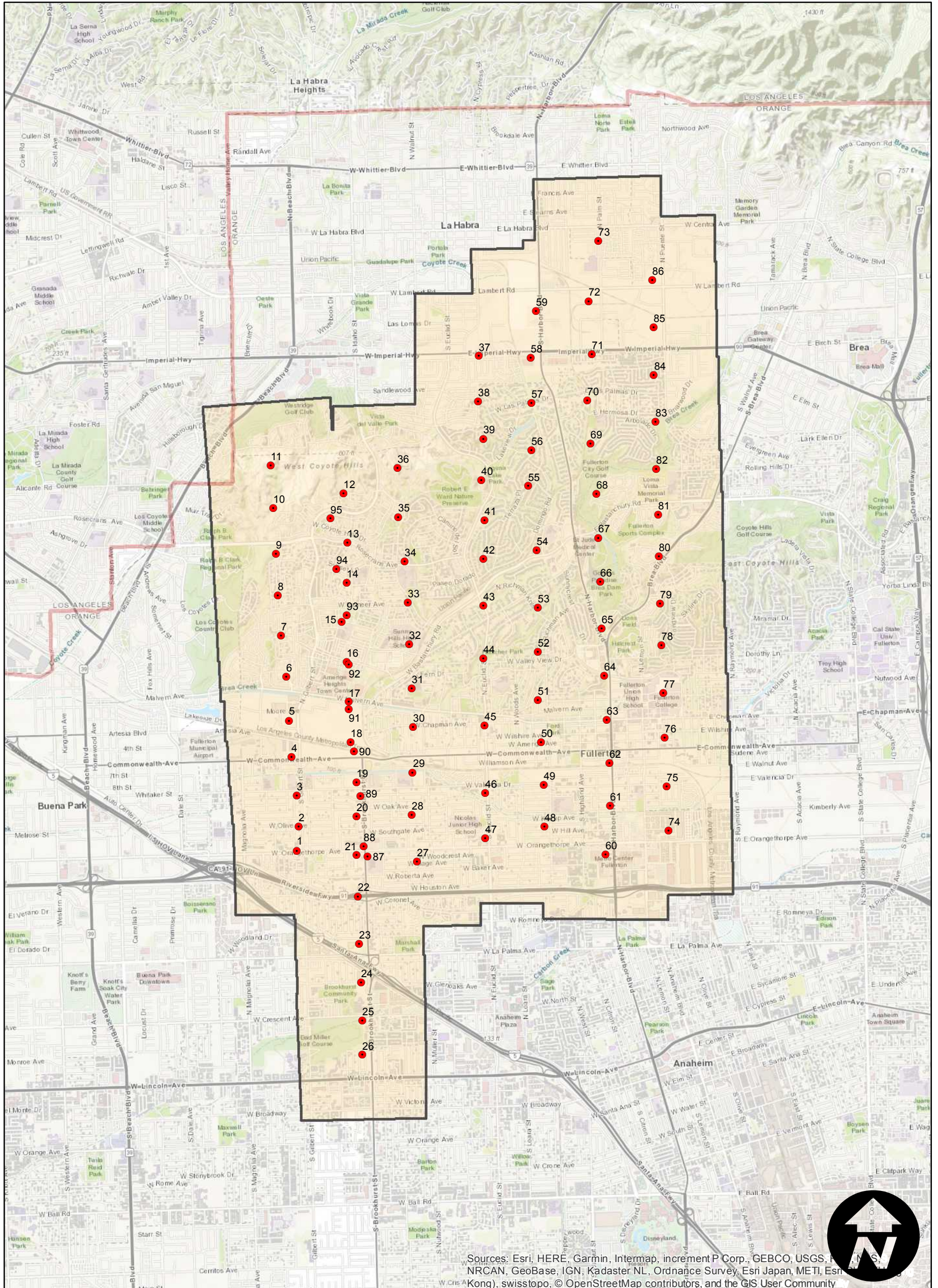
Counties: Orange
Flight date(s): 10-10-1940
Scale: 1:7,200
Overlap: 60-90%

Note: Fullerton to Brea.
Imagery acquired January 2013.
Nitrate negatives scanned, November 2015.

FLIGHT LOCATION



Complete Metadata:
<https://www.library.ucsb.edu/src/airphotos/aerial-photography-information>



Sources: Esri, HERE, Garmin, Intermap, increment P Corp., GEBCO, USGS, NRCAN, GeoBase, IGN, Kadaster NL, Ordnance Survey, Esri Japan, METI, Esri (China), Swisstopo, © OpenStreetMap contributors, and the GIS User Community

0 0.5 1 2 Miles

Index to Aerial Photography
Page 1 of 1

Scale of this index: 1:50,000