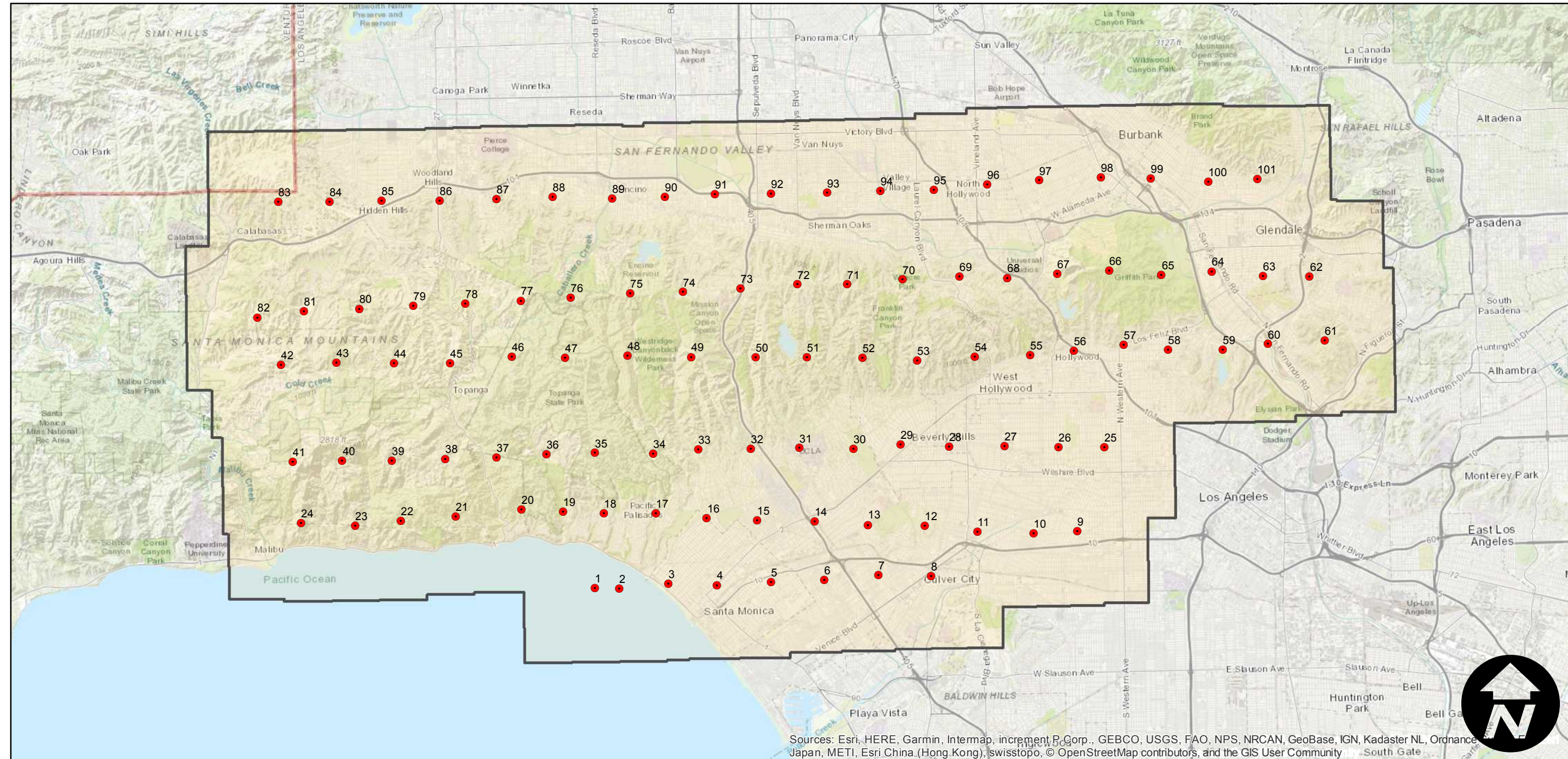


C-6630

Counties: Los Angeles
Flight date(s): 10-06-1940
Scale: 1:24,000
Overlap: 60%

Note: Santa Monica Mountains: from Calabasas to Burbank and Hollywood area. Copy negatives acquired from Teledyne, Inc., 1986. Prints and nitrate negatives acquired from Whittier College, January 2013.

FLIGHT LOCATION



Sources: Esri, HERE, Garmin, Intermap, increment P Corp., GEBCO, USGS, FAO, NPS, NRCAN, GeoBase, IGN, Kadaster NL, Ordnance Survey, Esri China (Hong Kong), Swisstopo, © OpenStreetMap contributors, and the GIS User Community

0 3 6 12 Miles

Index to Aerial Photography
Page 1 of 1

Scale of this index: 1:165,000