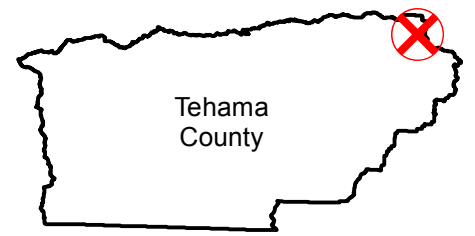


C-574C

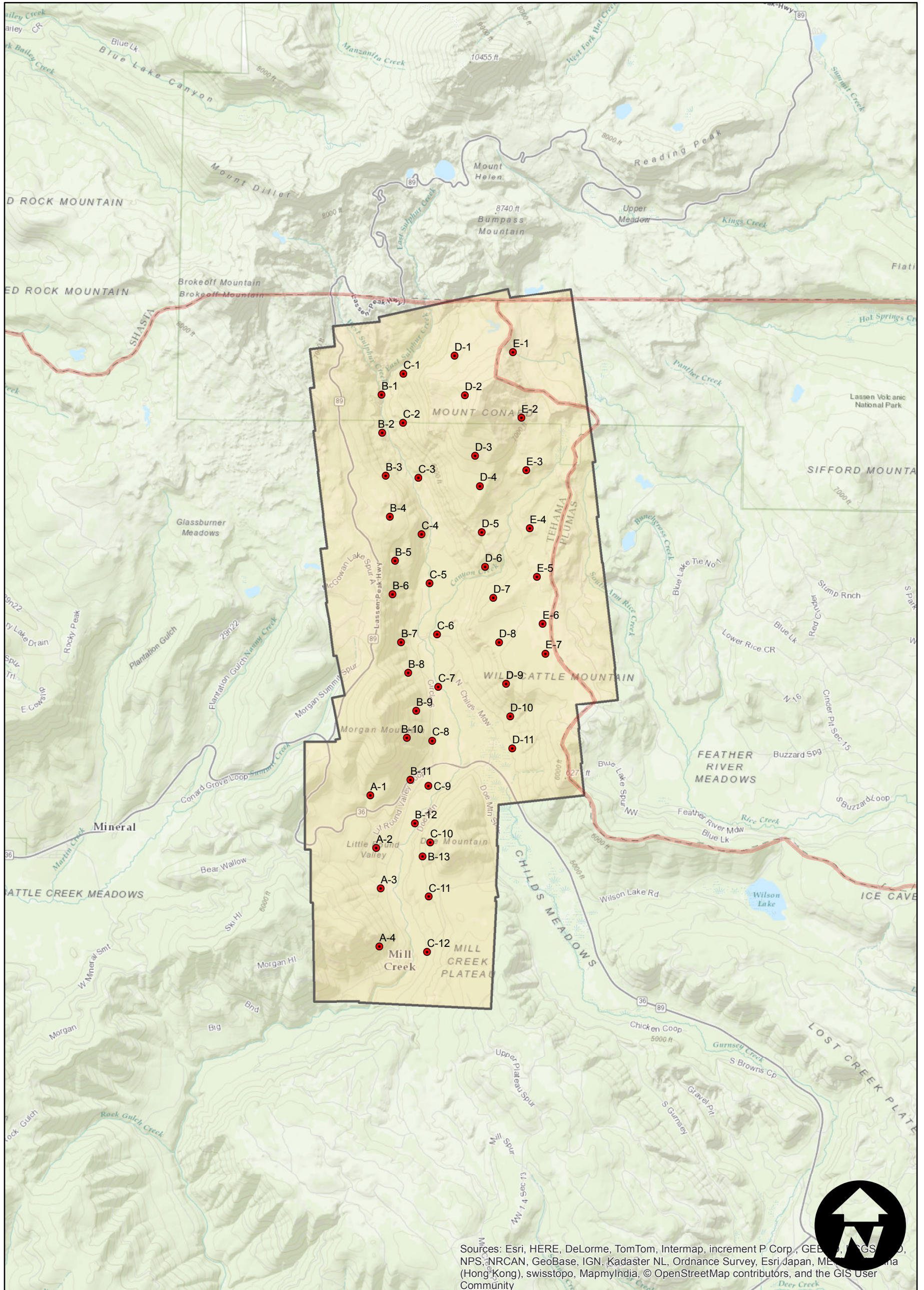
Counties: Tehama
 Flight date(s): 07-01-1929 to 07-31-1929
 Scale: 1:11,500
 Overlap: 60%

Note: Area south of Lassen Volcanic National Park along border of Tehama County and Plumas County. Overlap within flightlines is inconsistent. Acquired from Whittier College, January 2013.

FLIGHT LOCATION



Complete Metadata:
<http://www.library.ucsb.edu/mil/aerial-photography-tools>



Sources: Esri, HERE, DeLorme, TomTom, Intermap, increment P Corp., GEBCO, CNES, IGN, Kadaster NL, Ordnance Survey, Esri Japan, METI, Swisstopo, (Hong Kong), swisstopo, MapmyIndia, © OpenStreetMap contributors, and the GIS User Community



0 0.5 1 2 Miles