

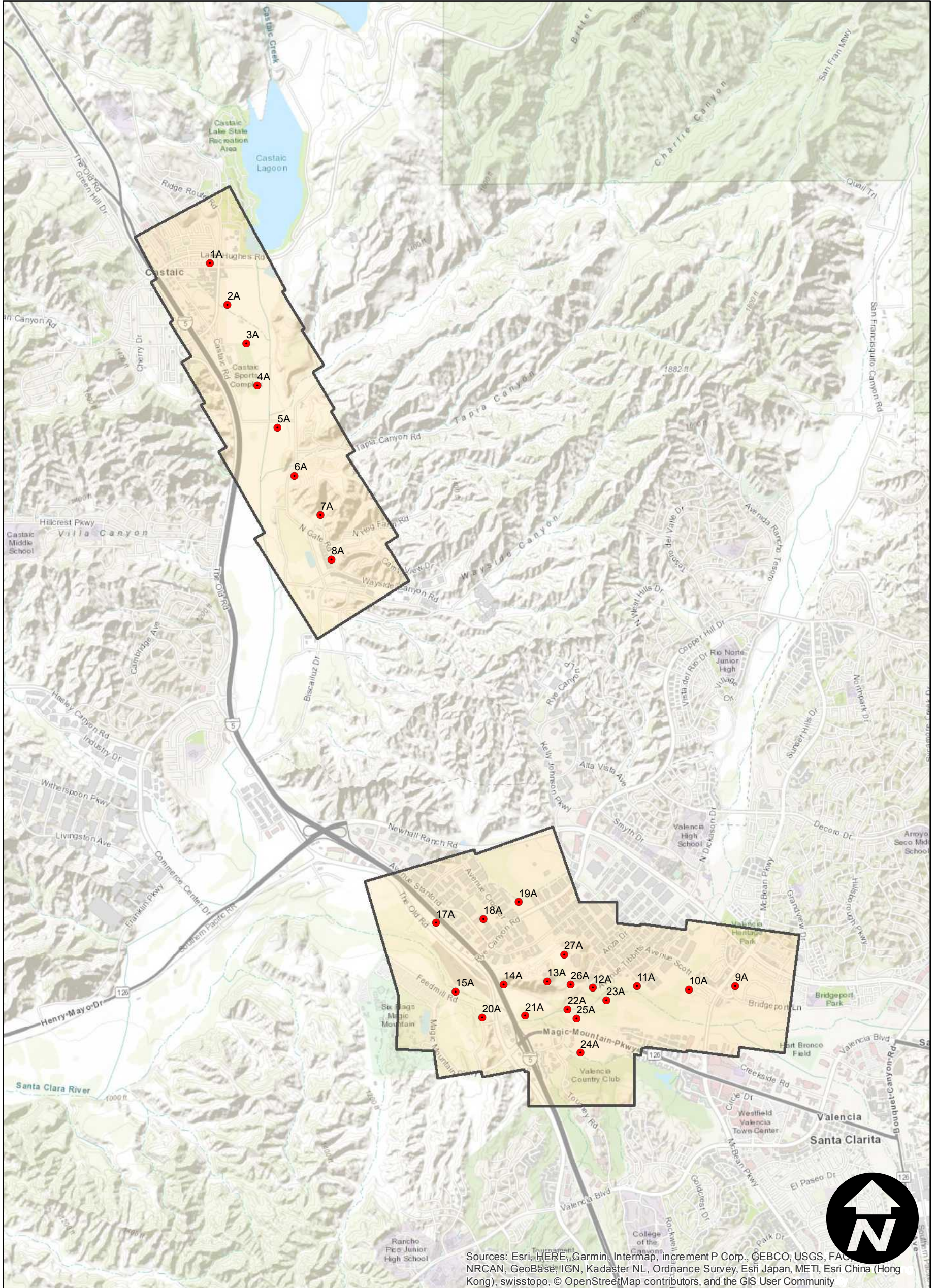
# C-5526A

Counties: Los Angeles  
 Flight date(s): 01-01-1939 to 01-31-1939  
 Scale: 1:4,800  
 Overlap: 60%

Complete Metadata:  
<https://www.library.ucsb.edu/src/airphotos/aerial-photography-information>

Note: Castaic; various Santa Clara River crossing sites. Exact flight date is unknown. Imagery acquired from Teledyne, Inc., 1986 and Whittier College, January 2013. Nitrate negatives scanned, October 2015.

## FLIGHT LOCATION



0 0.25 0.5 1 Miles

Index to Aerial Photography  
 Page 1 of 1

Scale of this index: 1:40,000

Sources: Esri, HERE, Garmin, Intermap, increment P Corp., GEBCO, USGS, FAO, NRCAN, GeoBase, IGN, Kadaster NL, Ordnance Survey, Esri Japan, METI, Esri China (Hong Kong), swisstopo, © OpenStreetMap contributors, and the GIS User Community

