

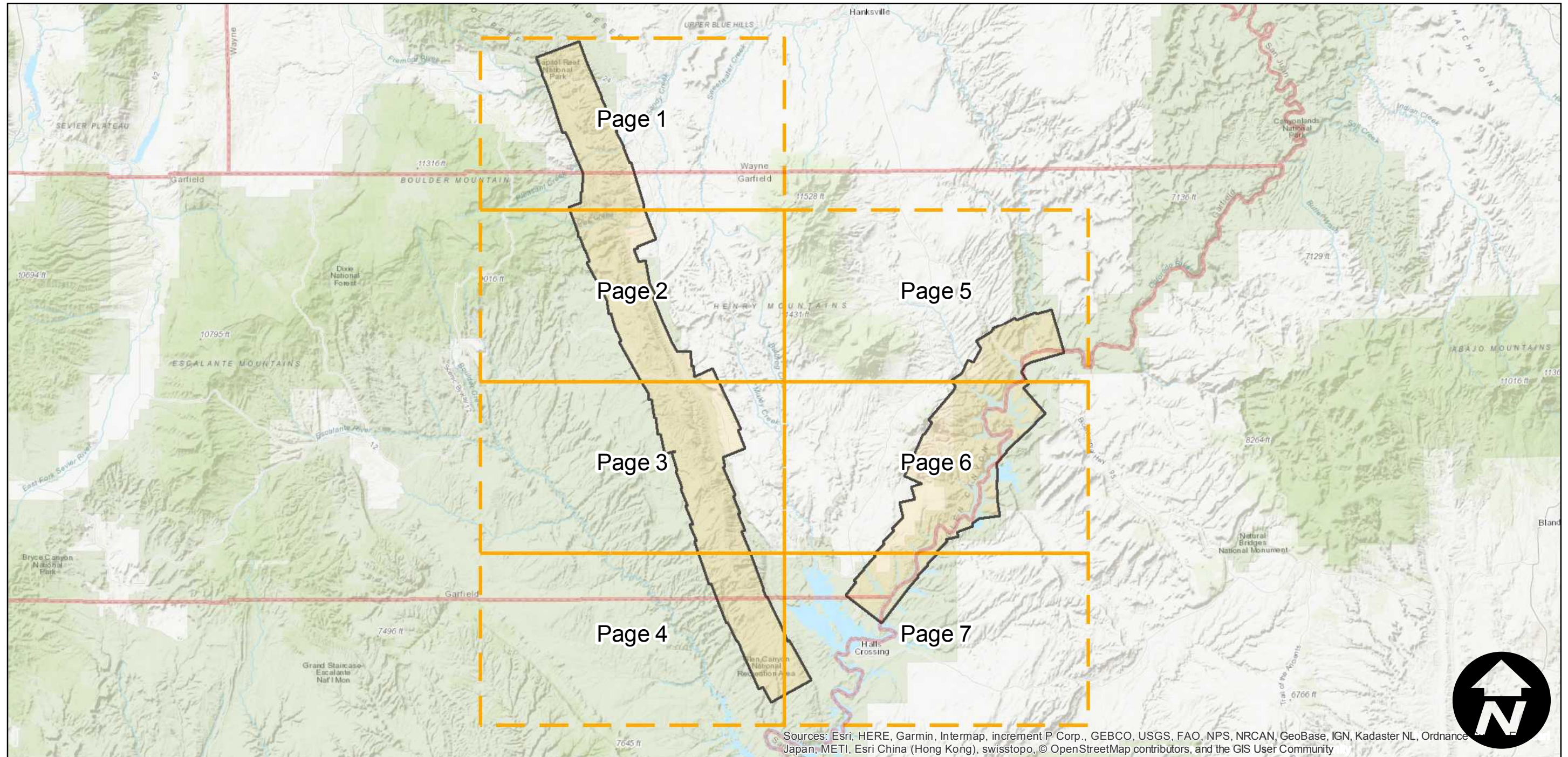
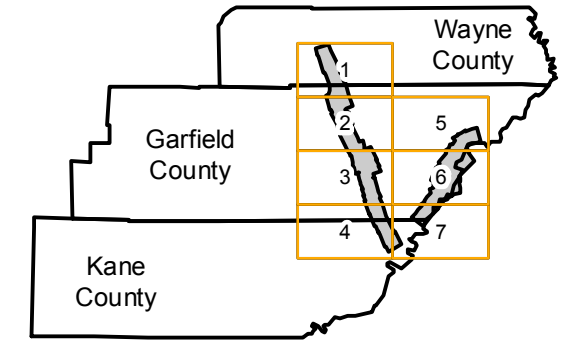
# C-5126

Counties: Garfield, Kane, Wayne (Utah)  
Flight date(s): 07-17-1938 to 07-23-1938  
Scale: 1:31,680  
Overlap: 60-80%

Note: Capitol Reef National Park and Lake Powell (from Bull Frog to Hite). Imagery acquired January 2013.

Complete Metadata:  
<https://www.library.ucsb.edu/src/airphotos/aerial-photography-information>

## FLIGHT LOCATION



Sources: Esri, HERE, Garmin, Intermap, increment P Corp., GEBCO, USGS, FAO, NPS, NRCAN, GeoBase, IGN, Kadaster NL, Ordnance Survey, Esri Japan, METI, Esri China (Hong Kong), swisstopo, © OpenStreetMap contributors, and the GIS User Community

0 10 20 40 Miles

Index to Aerial Photography  
Page Key

Scale of this index: 1:650,000

# C-5126

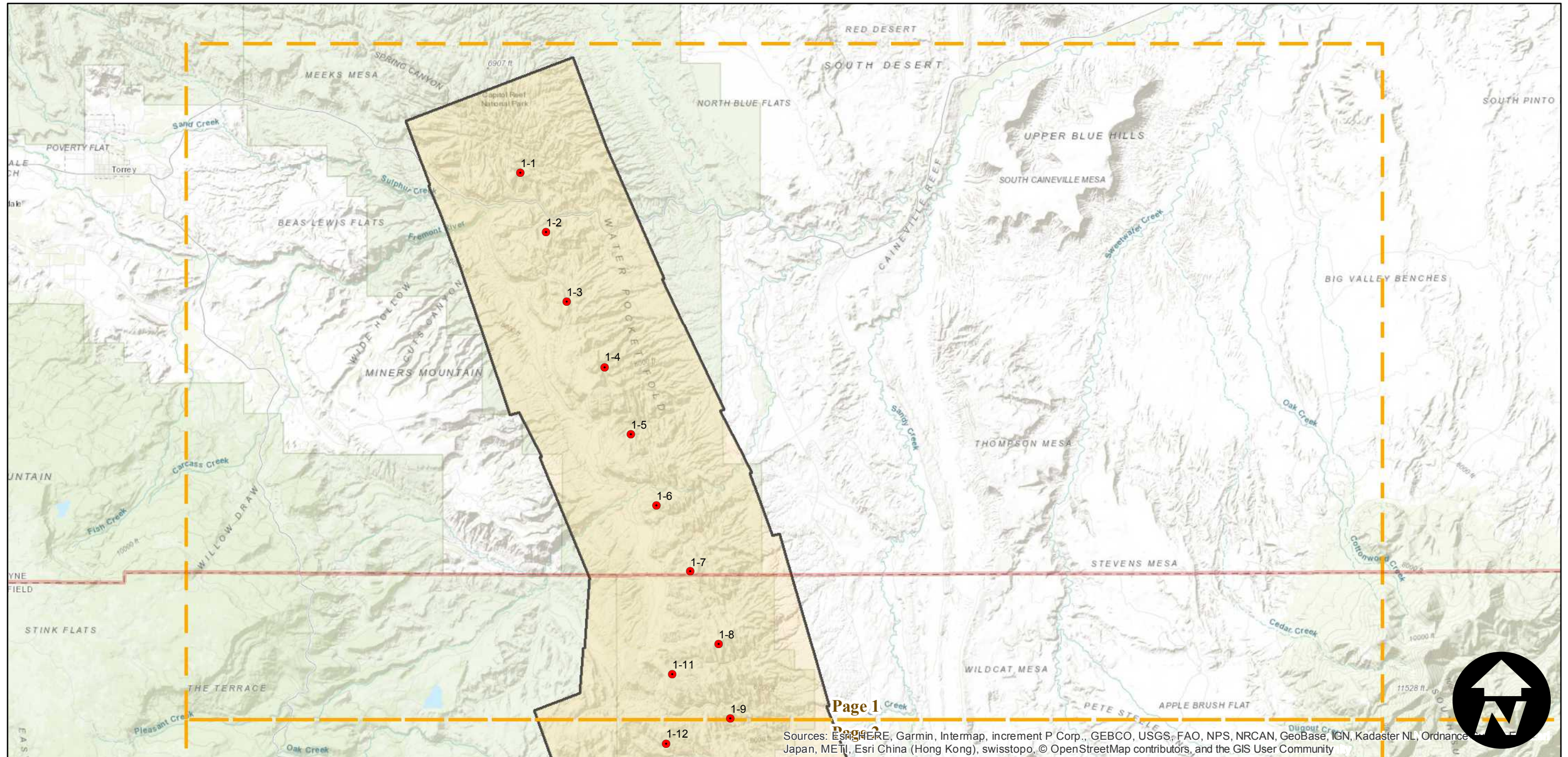
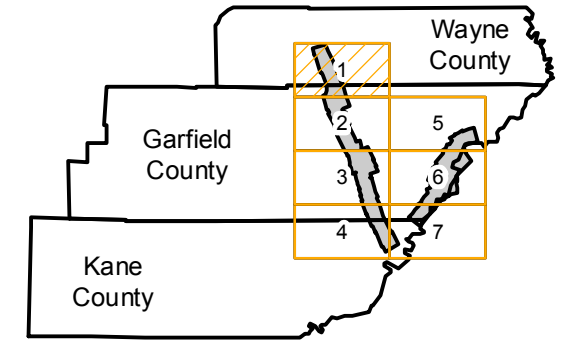
Counties: Garfield, Kane, Wayne (Utah)  
 Flight date(s): 07-17-1938 to 07-23-1938  
 Scale: 1:31,680  
 Overlap: 60-80%

Complete Metadata:  
<https://www.library.ucsb.edu/src/airphotos/aerial-photography-information>

Note: Capitol Reef National Park and Lake Powell (from Bull Frog to Hite). Imagery acquired January 2013.

- MIL owns frame
- MIL does not own frame

## FLIGHT LOCATION



0 3 6 12 Miles

Index to Aerial Photography  
 Page 1 of 7

Scale of this index: 1:165,000

Sources: Esri, HERE, Garmin, Intermap, increment P Corp., GEBCO, USGS, FAO, NPS, NRCAN, GeoBase, IGN, Kadaster NL, Ordnance Survey, Esri Japan, METI, Esri China (Hong Kong), swisstopo, © OpenStreetMap contributors, and the GIS User Community

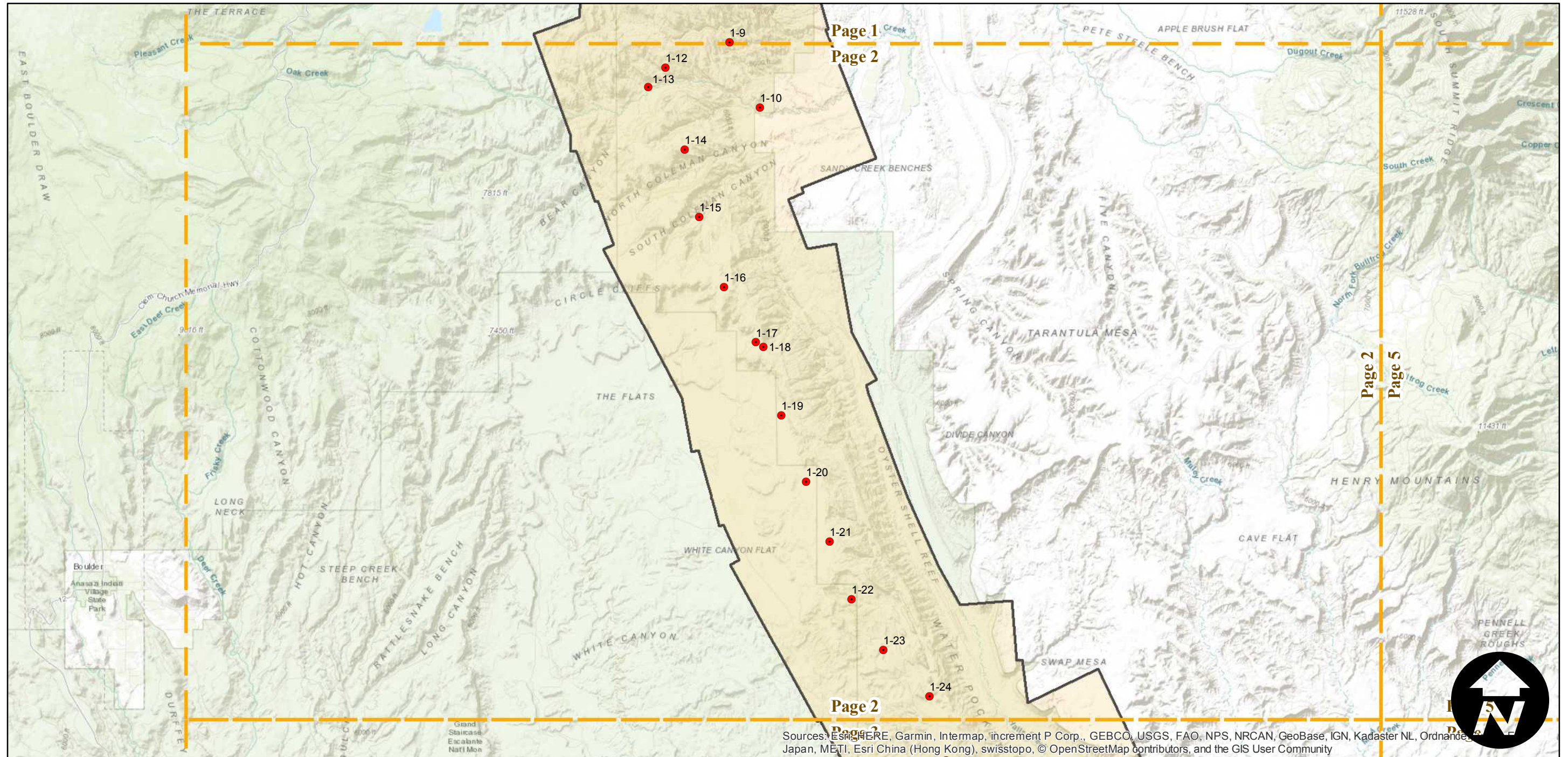
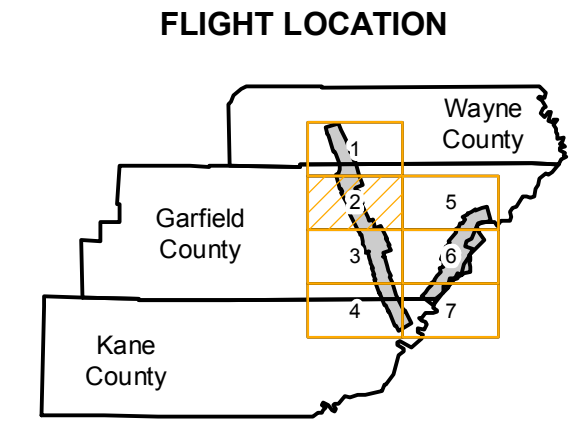
# C-5126

Counties: Garfield, Kane, Wayne (Utah)  
 Flight date(s): 07-17-1938 to 07-23-1938  
 Scale: 1:31,680  
 Overlap: 60-80%

Complete Metadata:  
<https://www.library.ucsb.edu/src/airphotos/aerial-photography-information>

Note: Capitol Reef National Park and Lake Powell (from Bull Frog to Hite). Imagery acquired January 2013.

- MIL owns frame
- MIL does not own frame



0 3 6 12 Miles

Index to Aerial Photography  
 Page 2 of 7

Scale of this index: 1:165,000

# C-5126

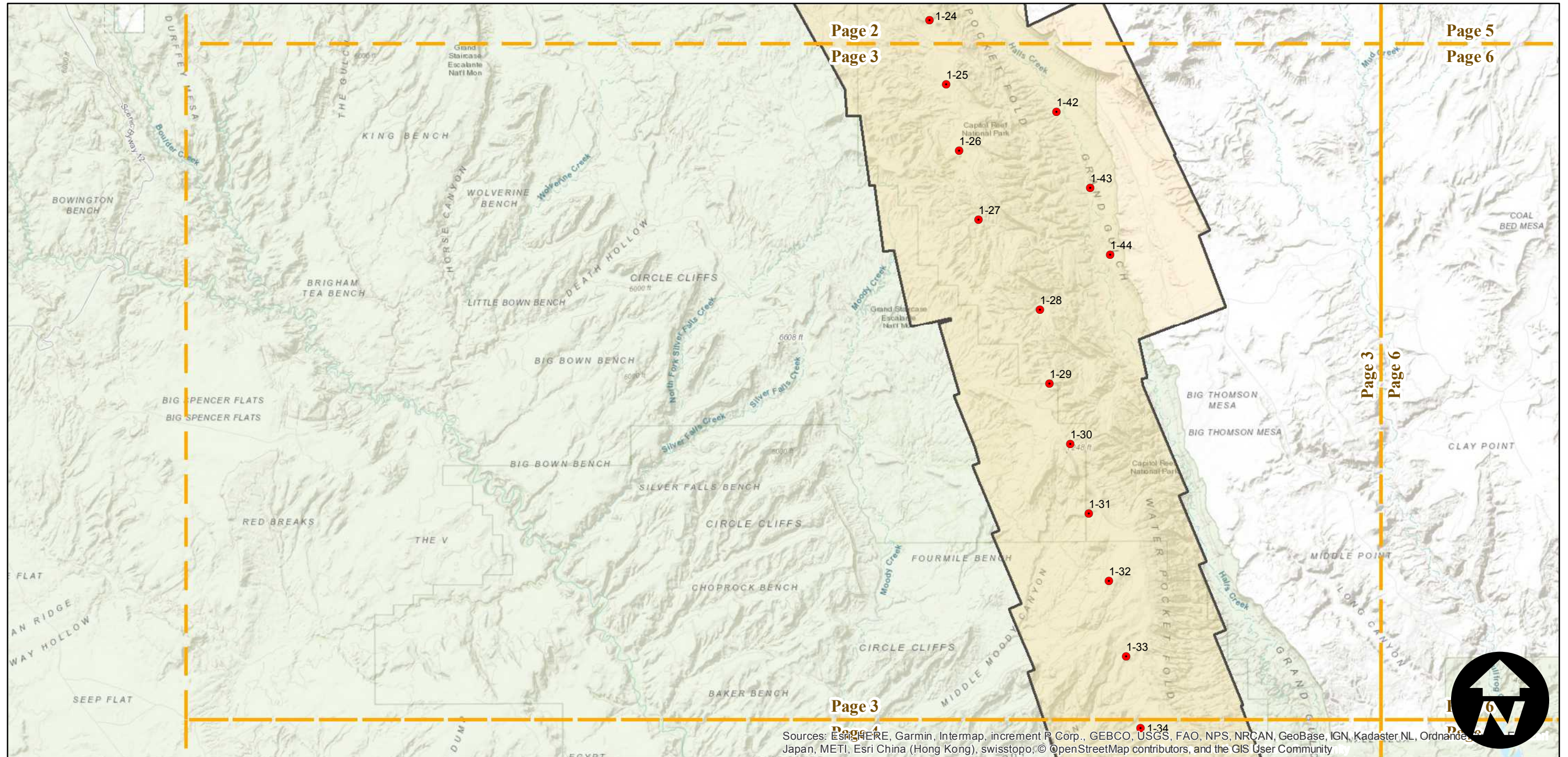
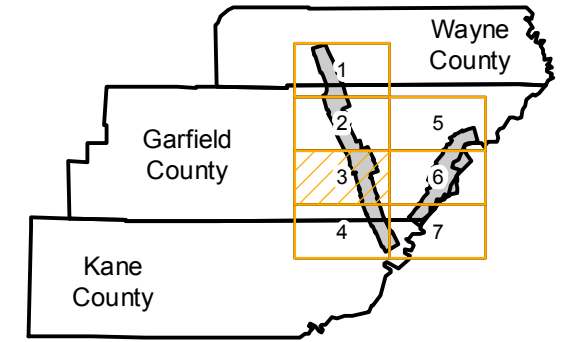
Counties: Garfield, Kane, Wayne (Utah)  
 Flight date(s): 07-17-1938 to 07-23-1938  
 Scale: 1:31,680  
 Overlap: 60-80%

Complete Metadata:  
<https://www.library.ucsb.edu/src/airphotos/aerial-photography-information>

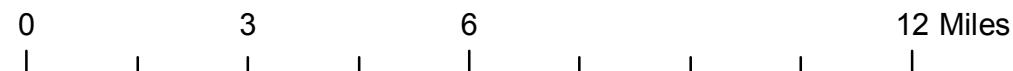
Note: Capitol Reef National Park and Lake Powell (from Bull Frog to Hite). Imagery acquired January 2013.

- MIL owns frame
- MIL does not own frame

## FLIGHT LOCATION



Sources: Esri, HERE, Garmin, Intermap, increment P Corp., GEBCO, USGS, FAO, NPS, NRCAN, GeoBase, IGN, Kadaster NL, Ordnance Survey, Esri Japan, METI, Esri China (Hong Kong), swisstopo, © OpenStreetMap contributors, and the GIS User Community



# C-5126

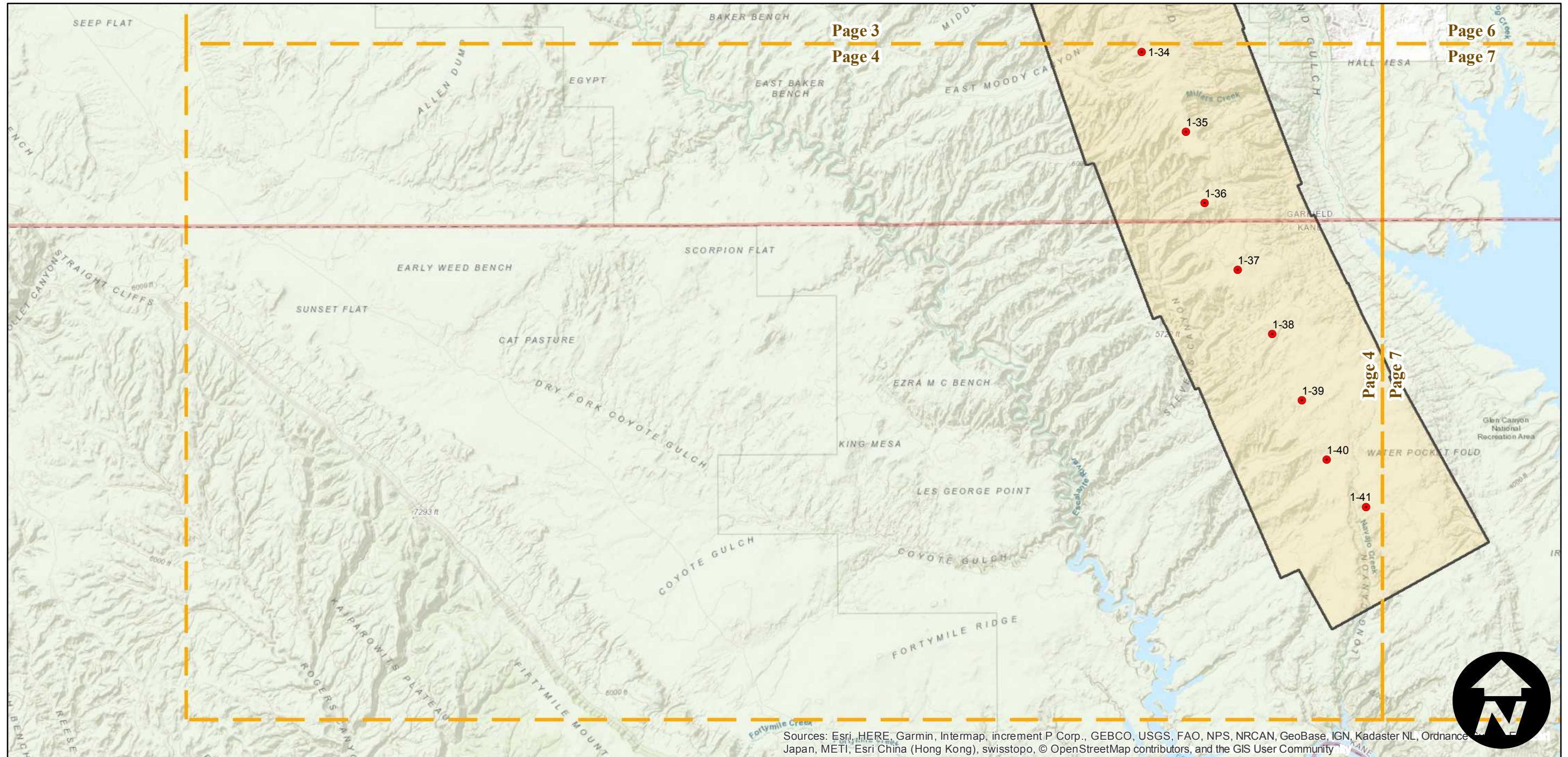
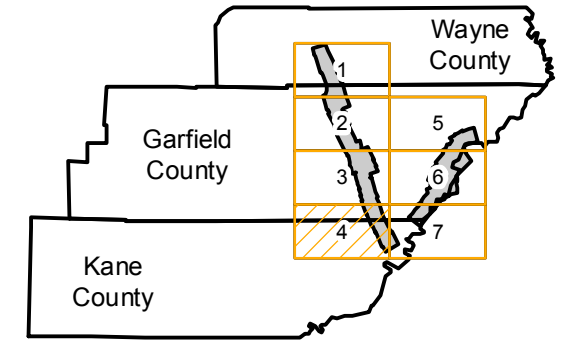
Counties: Garfield, Kane, Wayne (Utah)  
 Flight date(s): 07-17-1938 to 07-23-1938  
 Scale: 1:31,680  
 Overlap: 60-80%

Complete Metadata:  
<https://www.library.ucsb.edu/src/airphotos/aerial-photography-information>

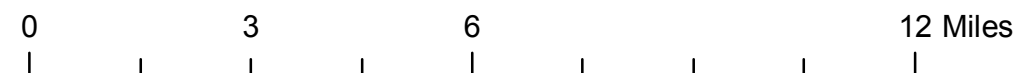
Note: Capitol Reef National Park and Lake Powell (from Bull Frog to Hite). Imagery acquired January 2013.

- MIL owns frame
- MIL does not own frame

## FLIGHT LOCATION



Sources: Esri, HERE, Garmin, Intermap, increment P Corp., GEBCO, USGS, FAO, NPS, NRCAN, GeoBase, IGN, Kadaster NL, Ordnance Survey, Esri, Swisstopo, Japan, METI, Esri China (Hong Kong), swisstopo, © OpenStreetMap contributors, and the GIS User Community



# C-5126

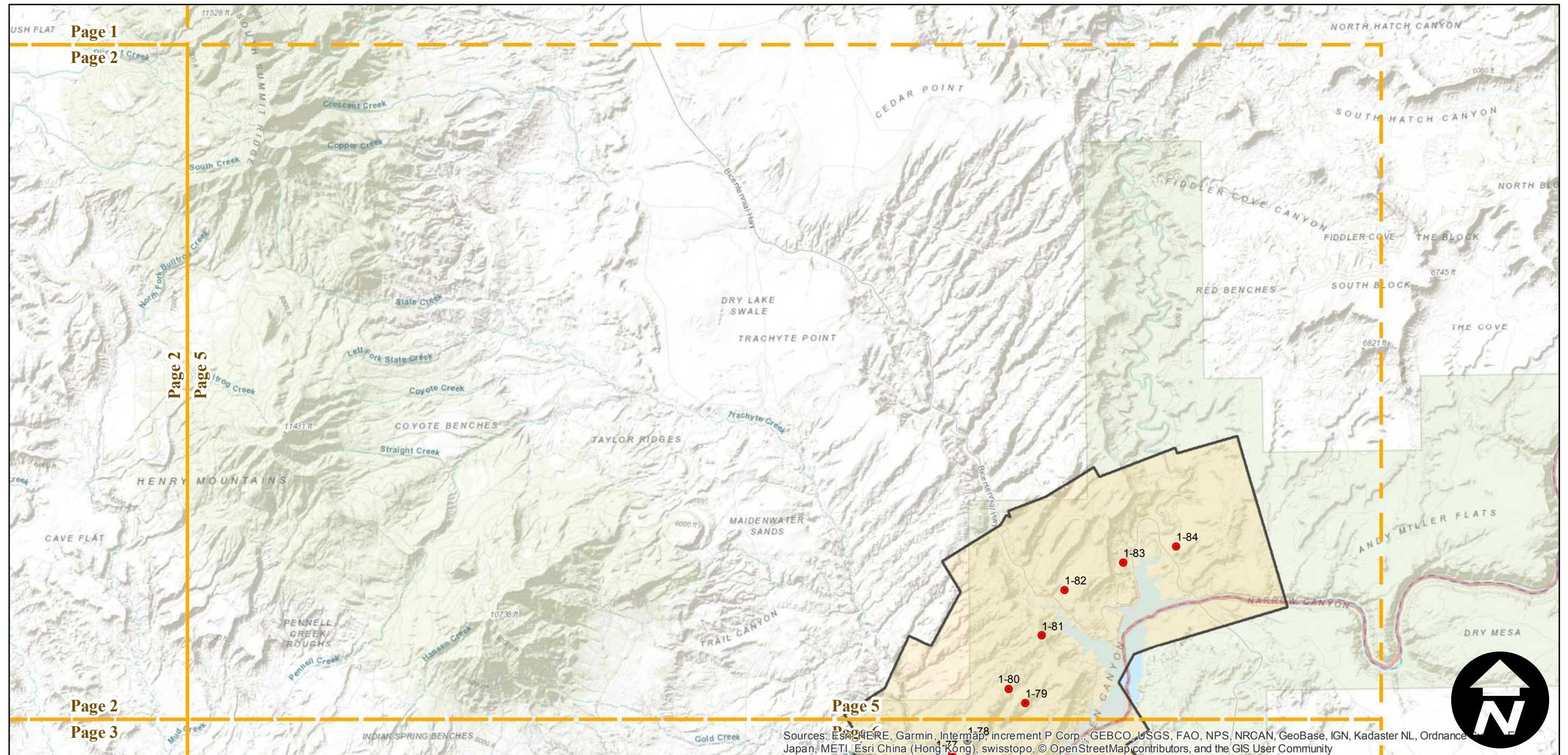
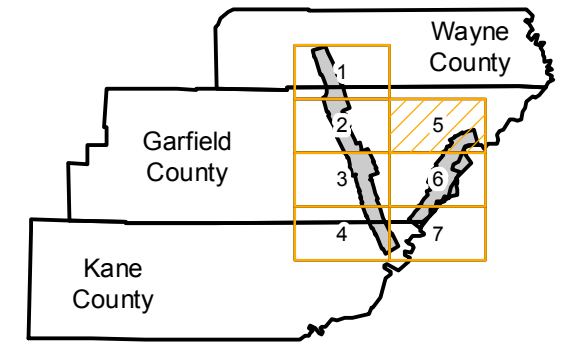
Counties: Garfield, Kane, Wayne (Utah)  
Flight date(s): 07-17-1938 to 07-23-1938  
Scale: 1:31,680  
Overlap: 60-80%

Complete Metadata:  
<https://www.library.ucsb.edu/src/airphotos/aerial-photography-information>

Note: Capitol Reef National Park and Lake Powell (from Bull Frog to Hite). Imagery acquired January 2013.

- MIL owns frame
- MIL does not own frame

## FLIGHT LOCATION



Sources: ESRI, HERE, Garmin, Intermap, increment P Corp., GEBCO, USGS, FAO, NPS, NRCAN, GeoBase, IGN, Kadaster NL, Ordnance Survey, Esri, Swisstopo, Swisstopo, Esri, Japan, METI, Esri China (Hong Kong), swisstopo, © OpenStreetMap contributors, and the GIS User Community

0 3 6 12 Miles

Index to Aerial Photography  
Page 5 of 7

Scale of this index: 1:165,000

# C-5126

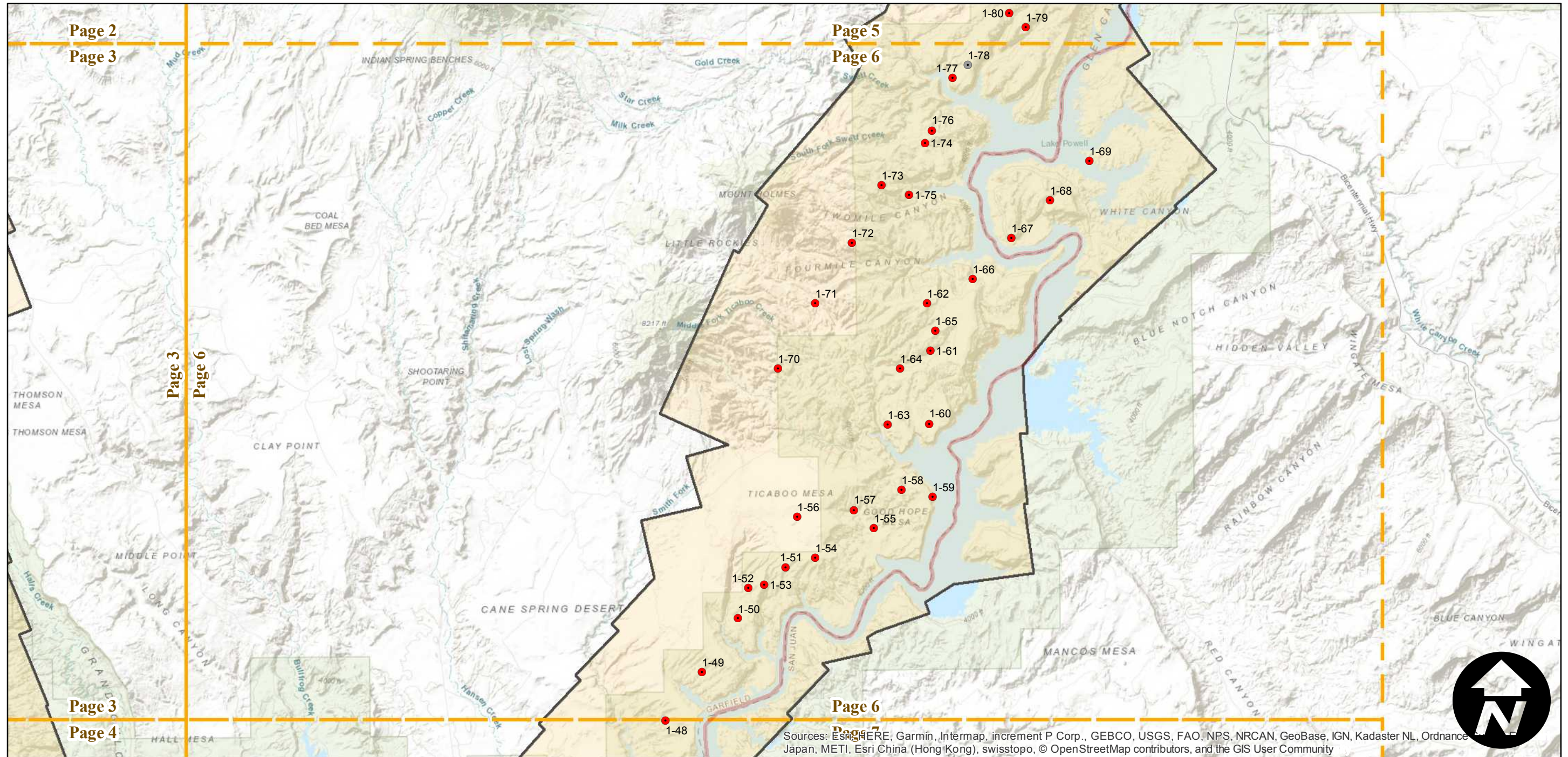
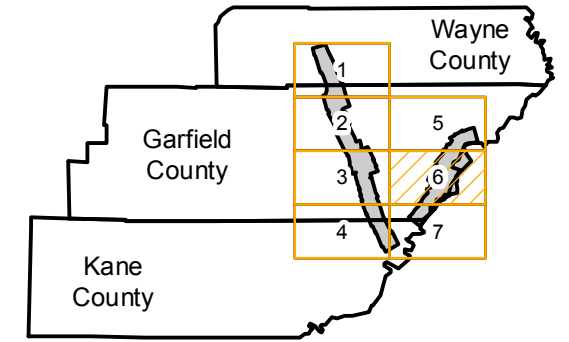
Counties: Garfield, Kane, Wayne (Utah)  
 Flight date(s): 07-17-1938 to 07-23-1938  
 Scale: 1:31,680  
 Overlap: 60-80%

Complete Metadata:  
<https://www.library.ucsb.edu/src/airphotos/aerial-photography-information>

Note: Capitol Reef National Park and Lake Powell (from Bull Frog to Hite). Imagery acquired January 2013.

- MIL owns frame
- MIL does not own frame

## FLIGHT LOCATION



Sources: ESRI, HERE, Garmin, Intermap, increment P Corp., GEBCO, USGS, FAO, NPS, NRCAN, GeoBase, IGN, Kadaster NL, Ordnance Survey, Esri, Swisstopo, Japan, METI, Esri China (Hong Kong), swisstopo, © OpenStreetMap contributors, and the GIS User Community

0 3 6 12 Miles

Index to Aerial Photography  
 Page 6 of 7

Scale of this index: 1:165,000

# C-5126

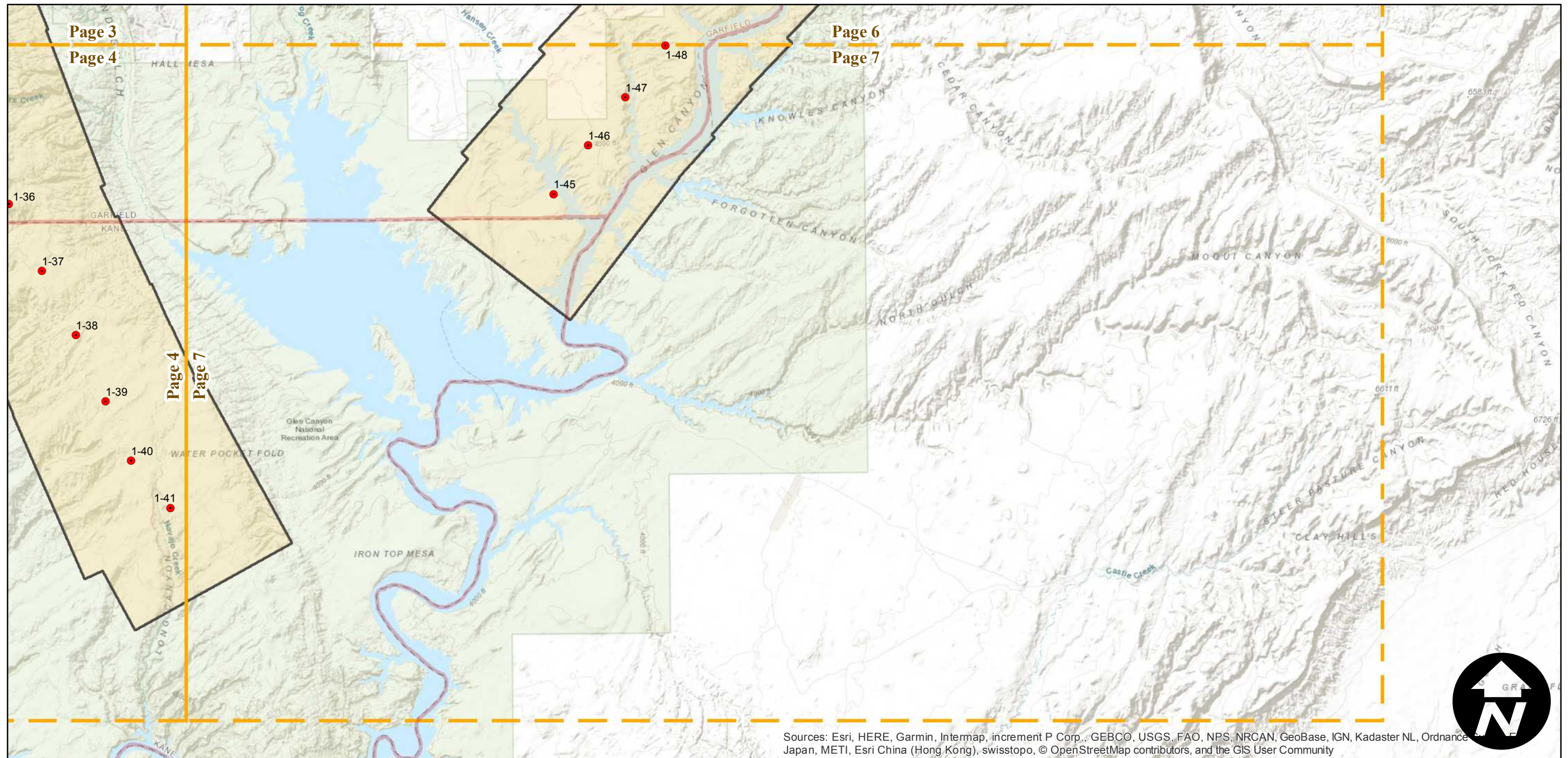
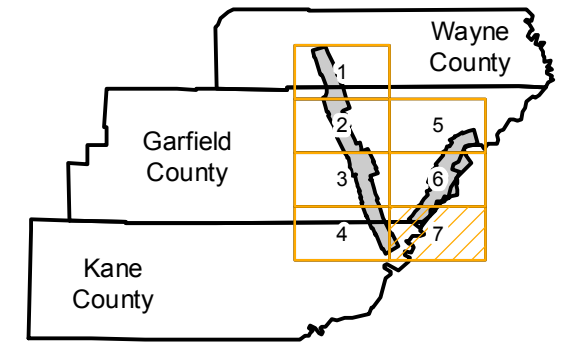
Counties: Garfield, Kane, Wayne (Utah)  
Flight date(s): 07-17-1938 to 07-23-1938  
Scale: 1:31,680  
Overlap: 60-80%

Complete Metadata:  
<https://www.library.ucsb.edu/src/airphotos/aerial-photography-information>

Note: Capitol Reef National Park and Lake Powell (from Bull Frog to Hite). Imagery acquired January 2013.

- MIL owns frame
- MIL does not own frame

## FLIGHT LOCATION



Sources: Esri, HERE, Garmin, Intermap, increment P Corp., GEBCO, USGS, FAO, NPS, NRCAN, GeoBase, IGN, Kadaster NL, Ordnance Survey, Esri Japan, METI, Esri China (Hong Kong), swisstopo, © OpenStreetMap contributors, and the GIS User Community

0 3 6 12 Miles

Index to Aerial Photography  
Page 7 of 7

Scale of this index: 1:165,000