

C-5029

Counties: Los Angeles, Orange, San Bernardino

Flight date(s): 03-04-1938

Scale: 1:30,000

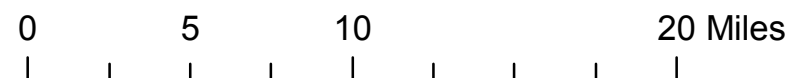
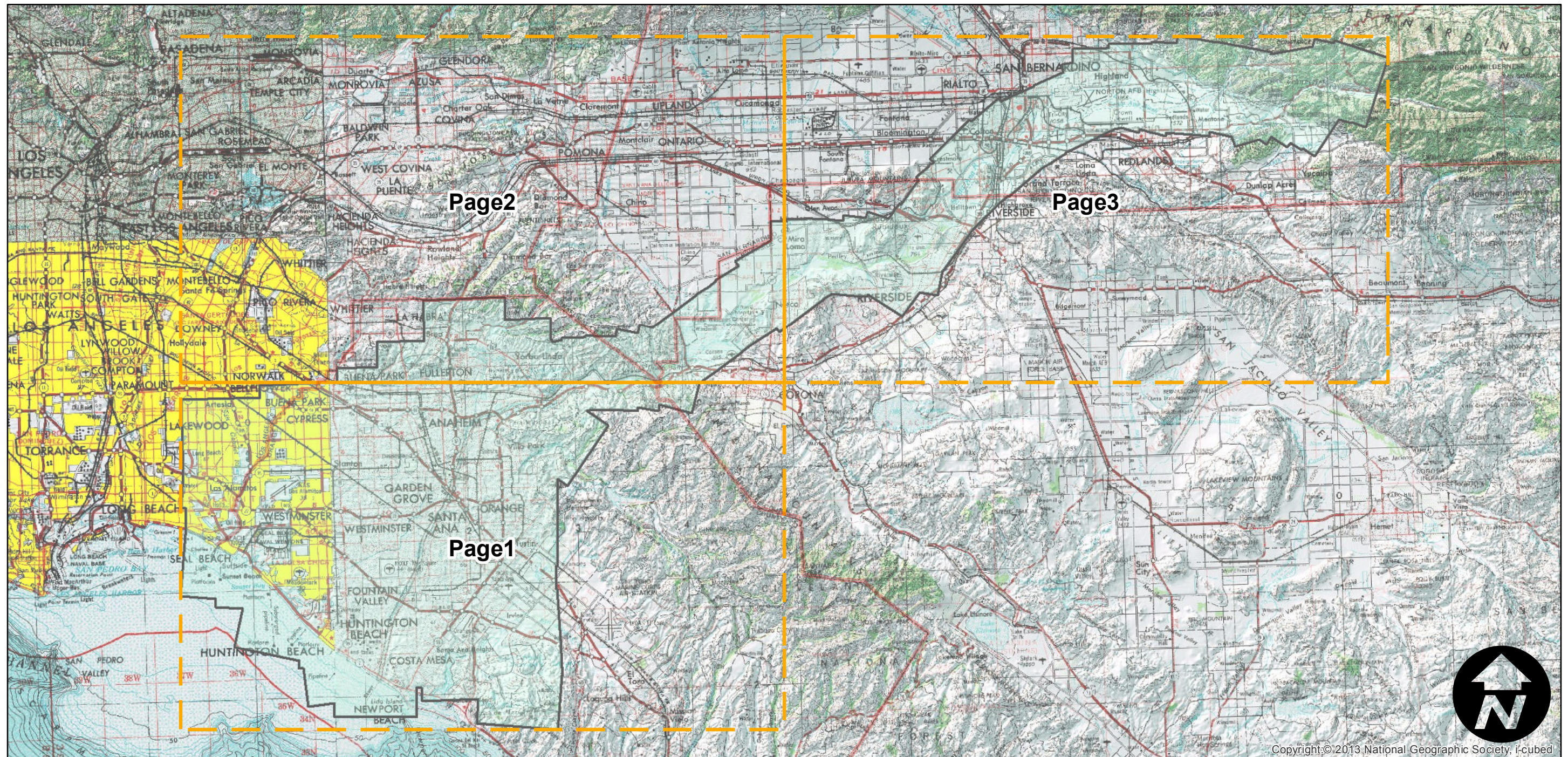
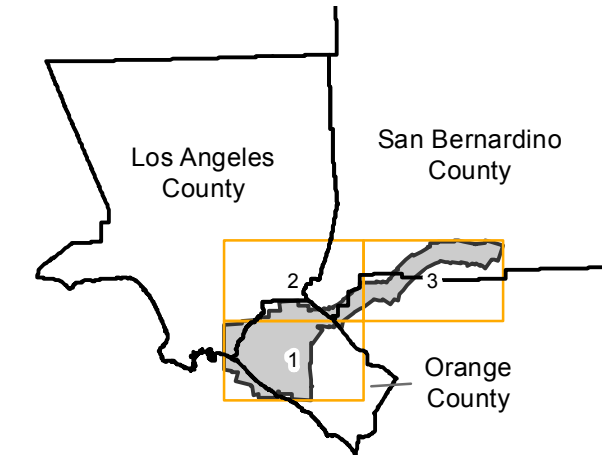
Overlap: 60%

Complete Metadata:

<http://www.library.ucsb.edu/mil/aerial-photography-tools>

Note: Santa Ana River: Long Beach to Santa Ana, and San Bernardino to Rincon. Imagery acquired 1986 and January 2013.

FLIGHT LOCATION



Index to Aerial Photography
Page Key

Scale of this index: 1:375,000

Copyright © 2013 National Geographic Society, i-cubed

C-5029

Counties: Los Angeles, Orange, San Bernardino

Flight date(s): 03-04-1938

Scale: 1:30,000

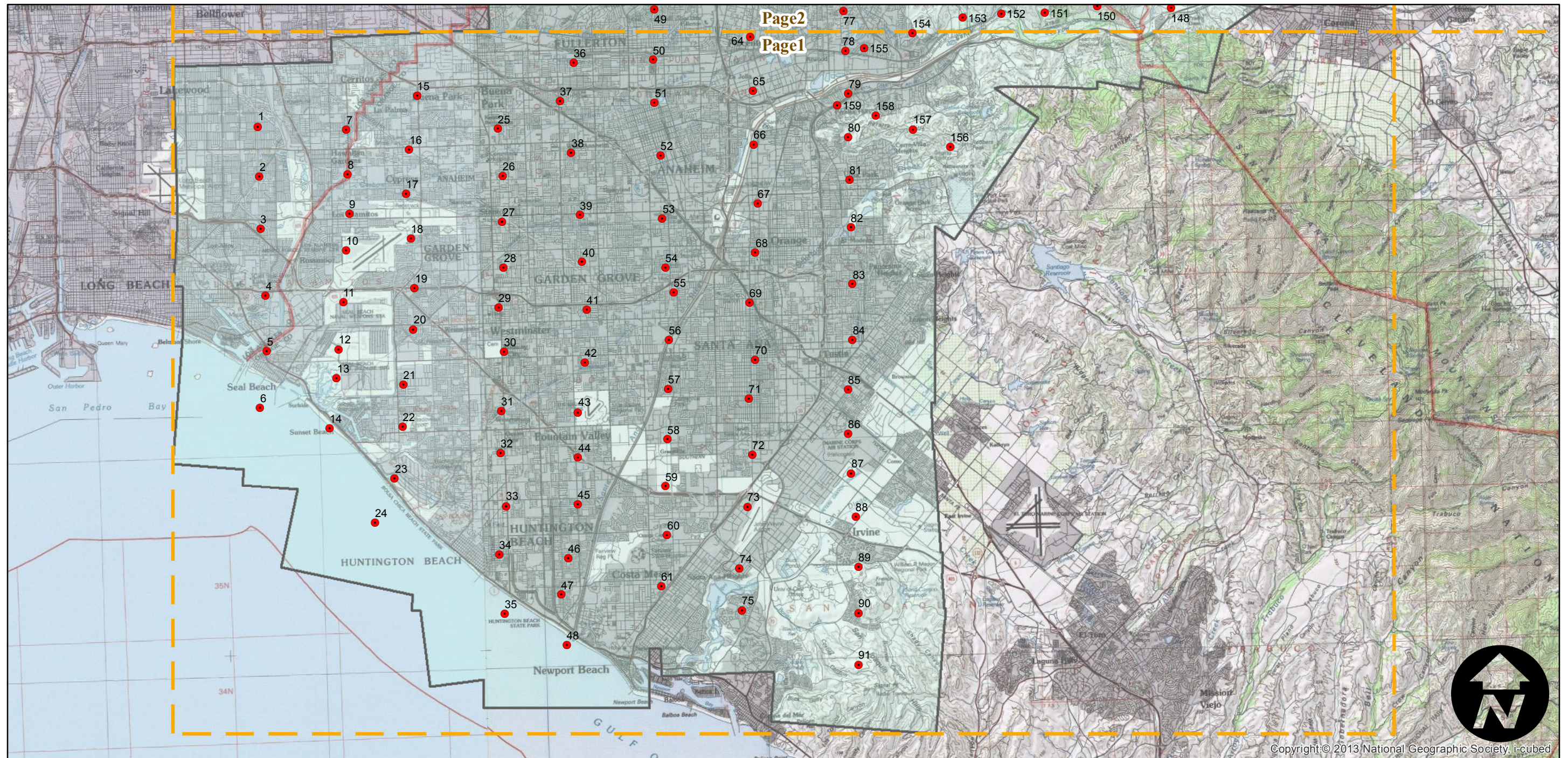
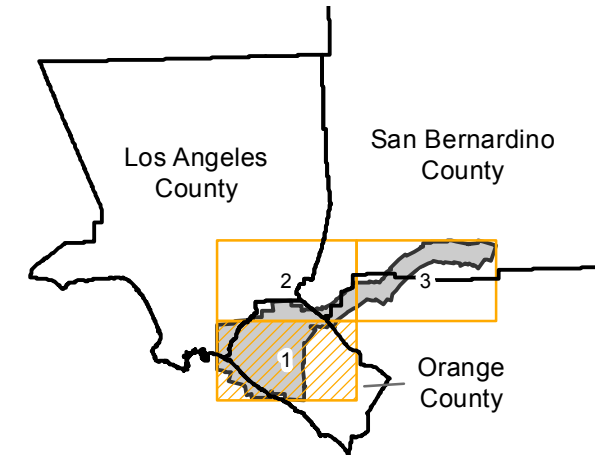
Overlap: 60%

Complete Metadata:

<http://www.library.ucsb.edu/mil/aerial-photography-tools>

Note: Santa Ana River: Long Beach to Santa Ana, and San Bernardino to Rincon. Imagery acquired 1986 and January 2013.

FLIGHT LOCATION



0 1.25 2.5 5 Miles

Index to Aerial Photography
Page 1 of 3

Scale of this index: 1:185,000

C-5029

Counties: Los Angeles, Orange, San Bernardino

Flight date(s): 03-04-1938

Scale: 1:30,000

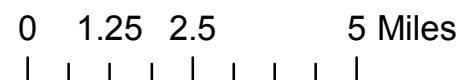
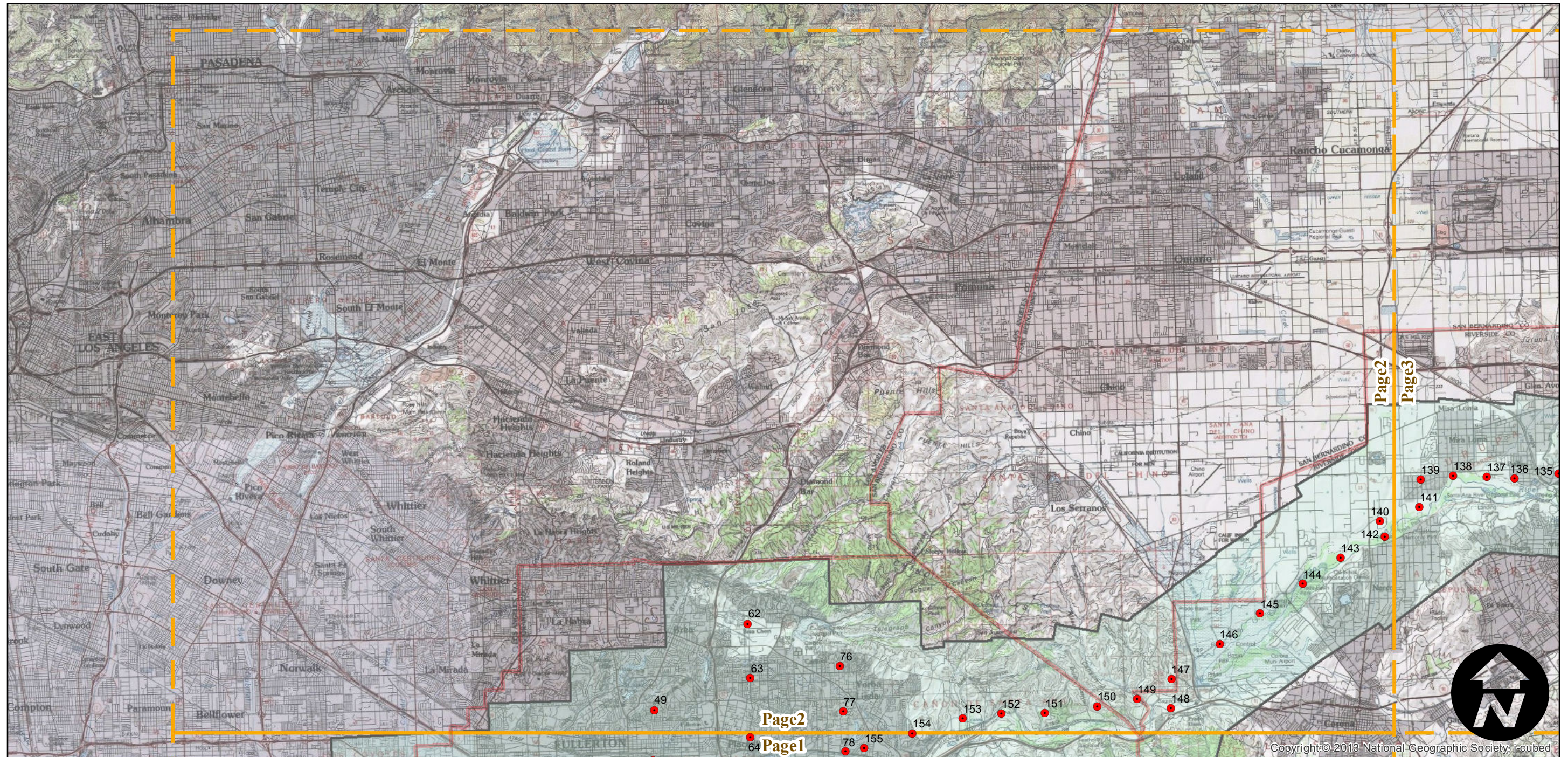
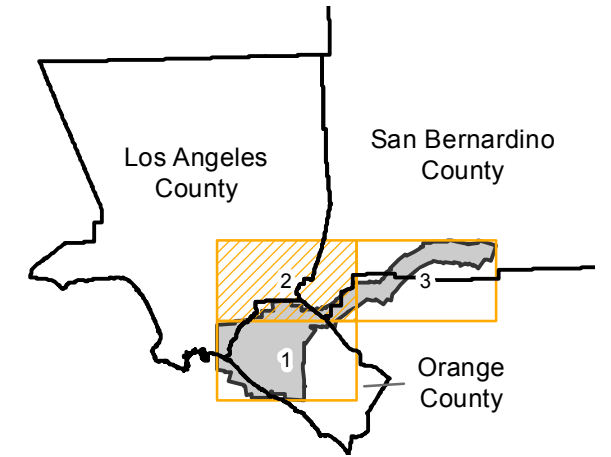
Overlap: 60%

Complete Metadata:

<http://www.library.ucsb.edu/mil/aerial-photography-tools>

Note: Santa Ana River: Long Beach to Santa Ana, and San Bernardino to Rincon. Imagery acquired 1986 and January 2013.

FLIGHT LOCATION



C-5029

Counties: Los Angeles, Orange, San Bernardino

Flight date(s): 03-04-1938

Scale: 1:30,000

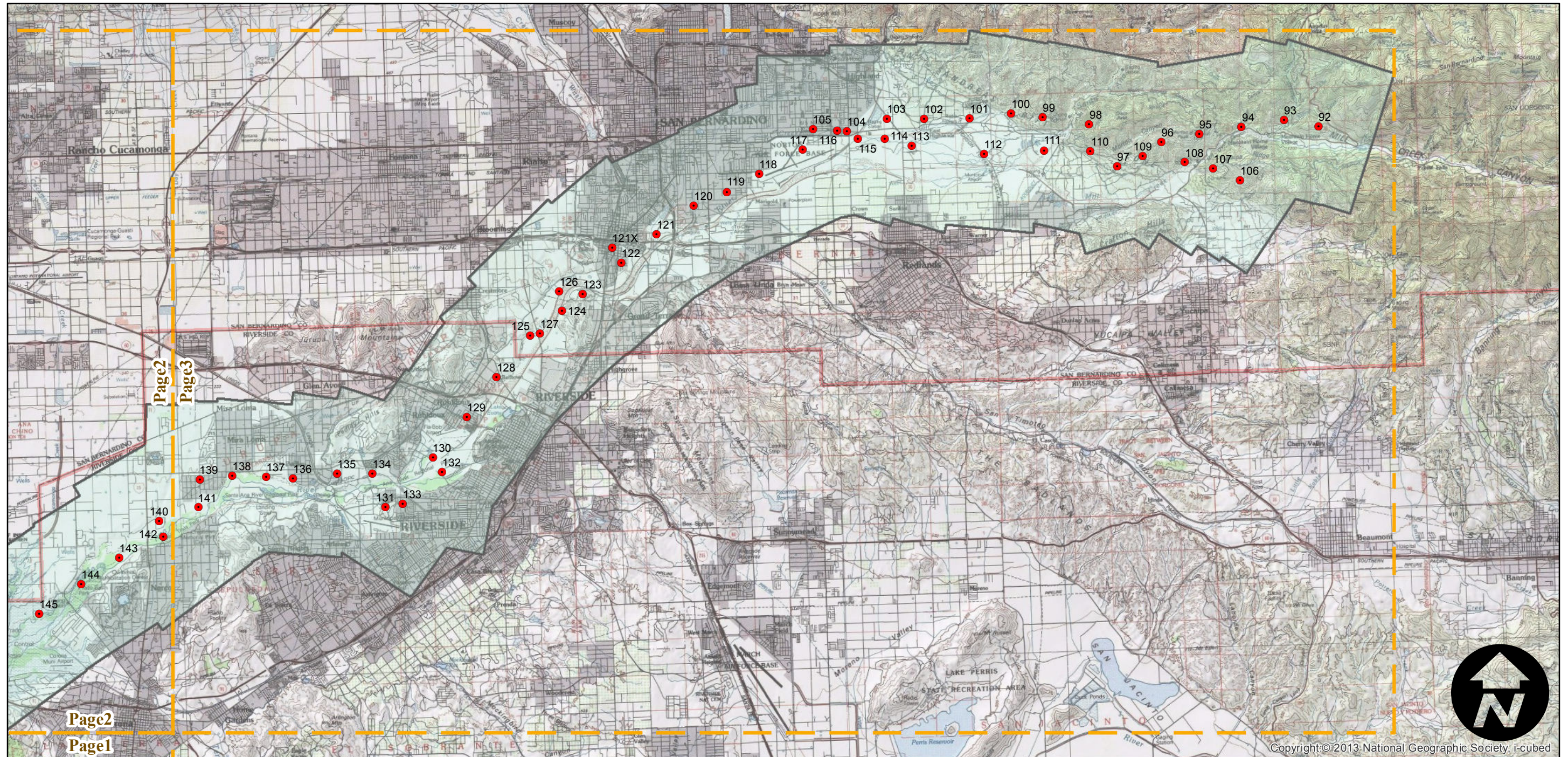
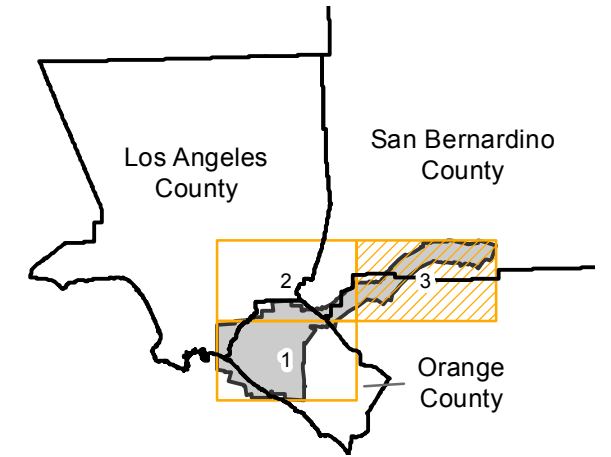
Overlap: 60%

Complete Metadata:

<http://www.library.ucsb.edu/mil/aerial-photography-tools>

Note: Santa Ana River: Long Beach to Santa Ana, and San Bernardino to Rincon. Imagery acquired 1986 and January 2013.

FLIGHT LOCATION



0 1.25 2.5 5 Miles

Index to Aerial Photography
Page 3 of 3

Scale of this index: 1:185,000



Copyright: © 2013 National Geographic Society, i-cubed