

# C-4950-CVS

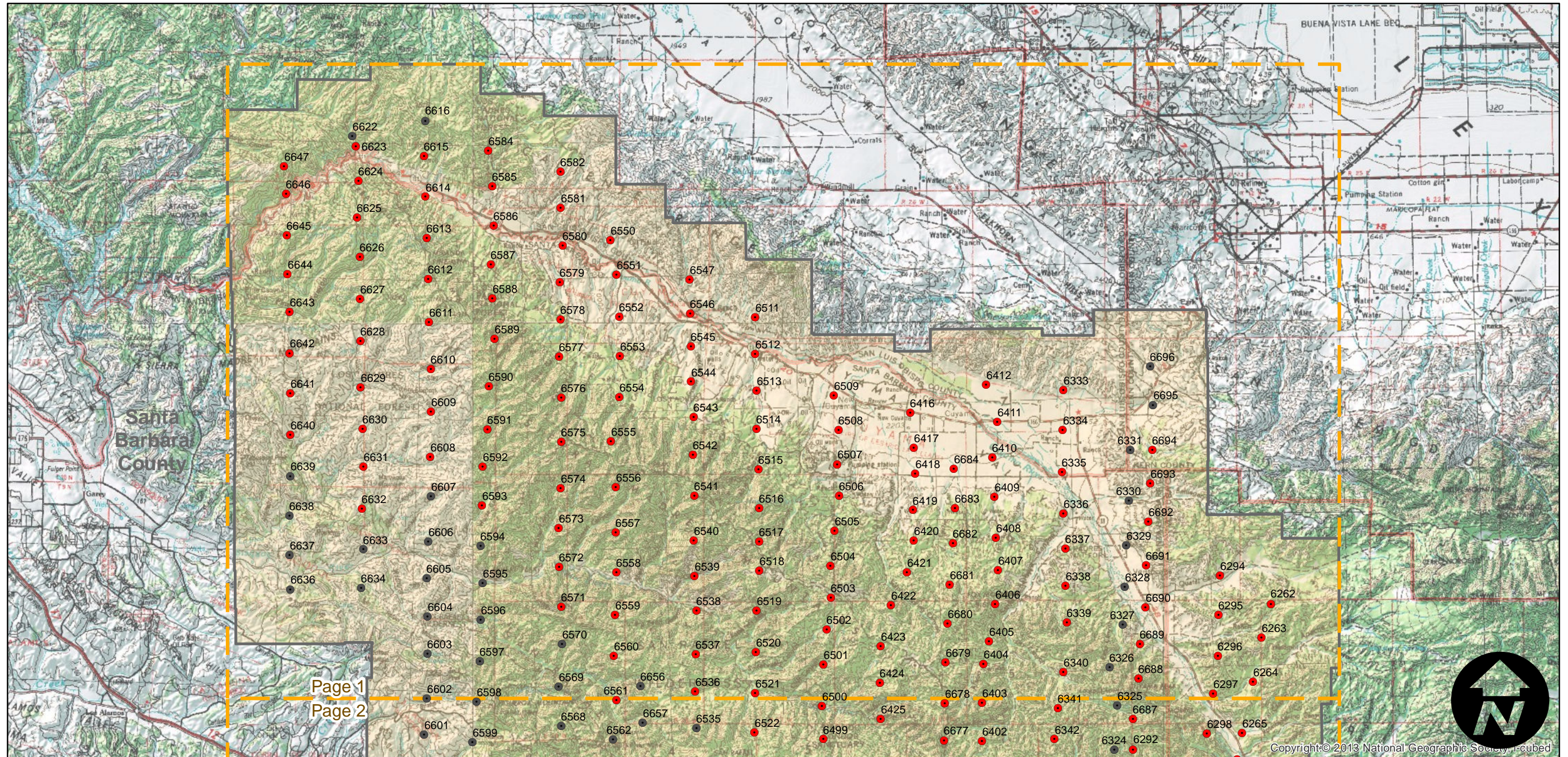
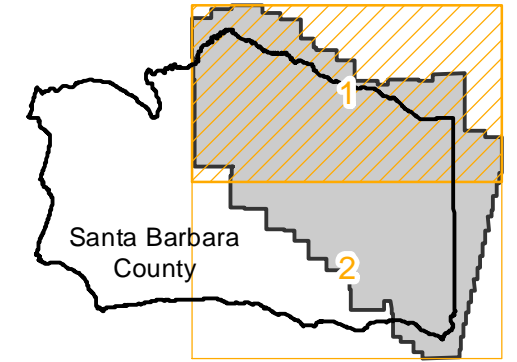
Counties: Santa Barbara  
Flight date(s): 01-01-1938 to 12-31-1938  
Scale: 1:31,680  
Overlap: 60%

Complete Metadata:  
<http://www.library.ucsb.edu/mil/aerial-photography-tools>

Note: Negatives are 9 X 9-inch cut frames at 1:31,680. The following frames are held as 18 x 18-inch paper print enlargements at 1:15,840: frames 6333 to 6336, 6408 to 6412, 6682 to 6684, 6416 to 6420, 6505 to 6509, 6511 to 6517, 6540 to 6547, 6550 to 6554, 6576 to 6582, and 6584 to 6586. Imagery acquired March 1990 and 2003.

- MIL owns frame
- MIL does not own frame

## FLIGHT LOCATION



0 5 10 20 Miles

Index to Aerial Photography  
Page 1 of 2

Scale of this index: 1:300,000



# C-4950-CVS

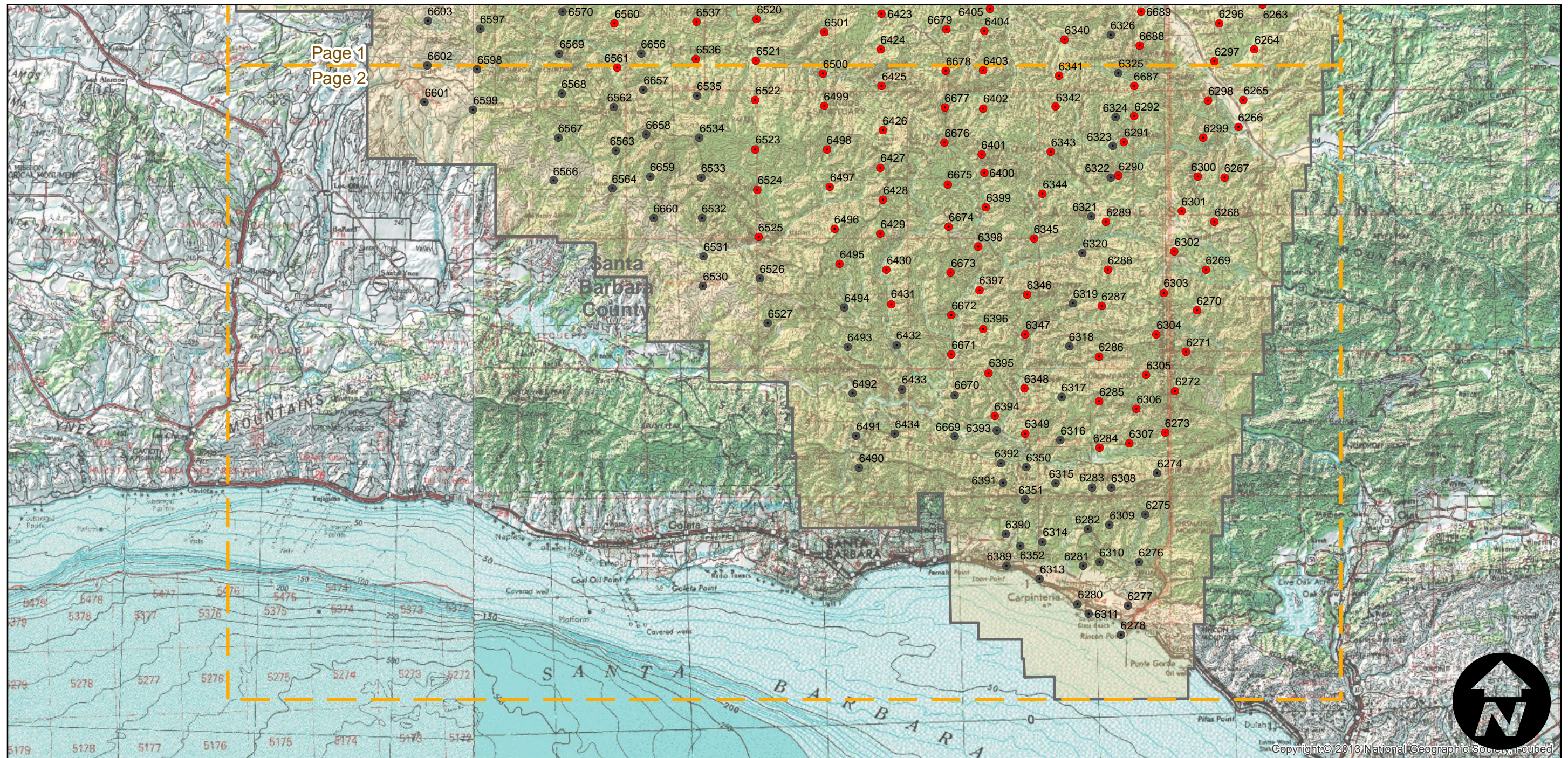
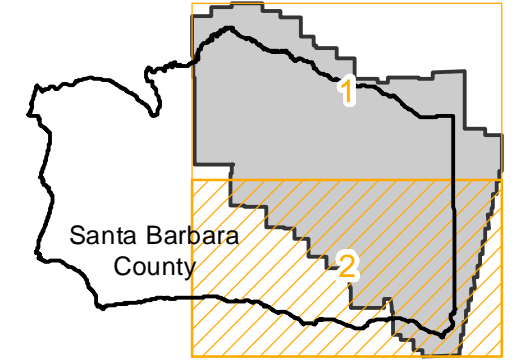
Counties: Santa Barbara  
Flight date(s): 01-01-1938 to 12-31-1938  
Scale: 1:31,680  
Overlap: 60%

Complete Metadata:  
<http://www.library.ucsb.edu/mil/aerial-photography-tools>

Note: Negatives are 9 X 9-inch cut frames at 1:31,680. The following frames are held as 18 x 18-inch paper print enlargements at 1:15,840: frames 6333 to 6336, 6408 to 6412, 6682 to 6684, 6416 to 6420, 6505 to 6509, 6511 to 6517, 6540 to 6547, 6550 to 6554, 6576 to 6582, and 6584 to 6586. Imagery acquired March 1990 and 2003.

- MIL owns frame
- MIL does not own frame

## FLIGHT LOCATION



0 5 10 20 Miles

Index to Aerial Photography  
Page 2 of 2

Scale of this index: 1:300,000