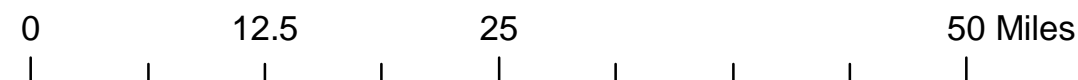
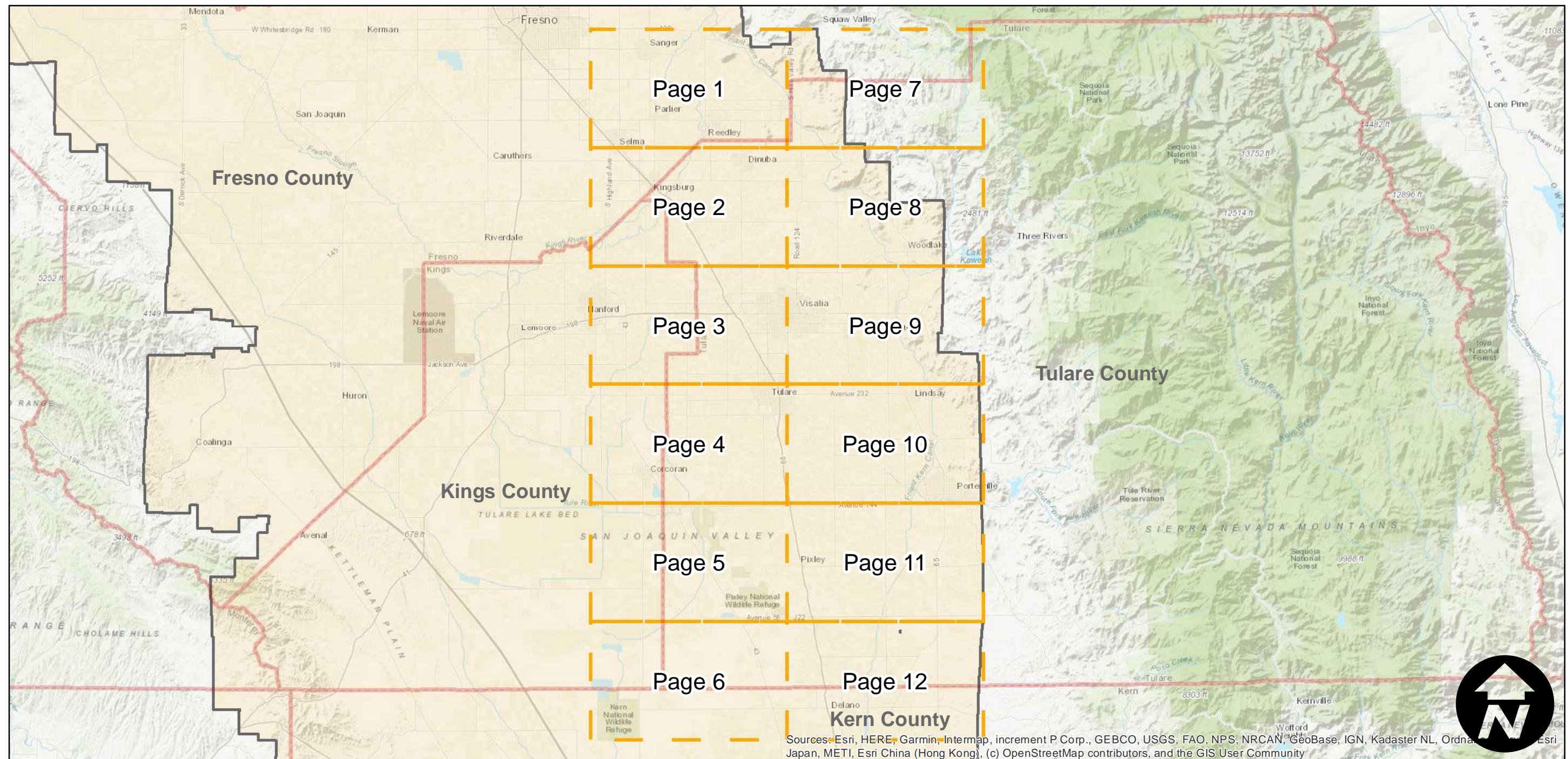
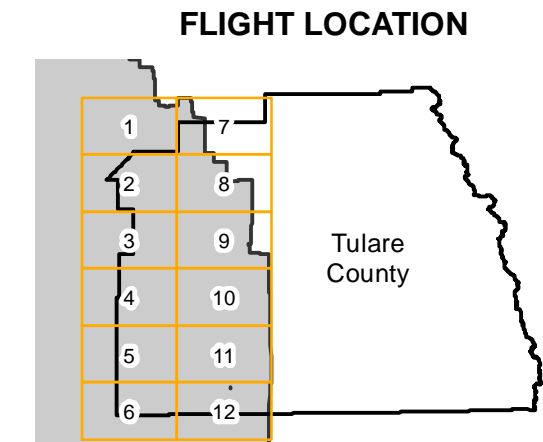


C-4650 (Tulare County)

Counties: Tulare
 Flight date(s): 01-01-1937 to 11-01-1937
 Scale: 1:20,000
 Overlap: 60%

Note: Flights ABN-1937 and ABG-1937 were flown as part of C-4650; Prints for these flights were integrated into C-4650. Imagery acquired from Teledyne 1986 and Whittier College, January 2013.

Complete Metadata:
<http://www.library.ucsb.edu/mil/aerial-photography-tools>



Index to Aerial Photography
 Page Key

Scale of this index: 1:650,000

Sources: Esri, HERE, Garmin, Intermap, increment P Corp., GEBCO, USGS, FAO, NPS, NRCAN, GeoBase, IGN, Kadaster NL, Ordnance Survey, Esri Japan, METI, Esri China (Hong Kong), (c) OpenStreetMap contributors, and the GIS User Community

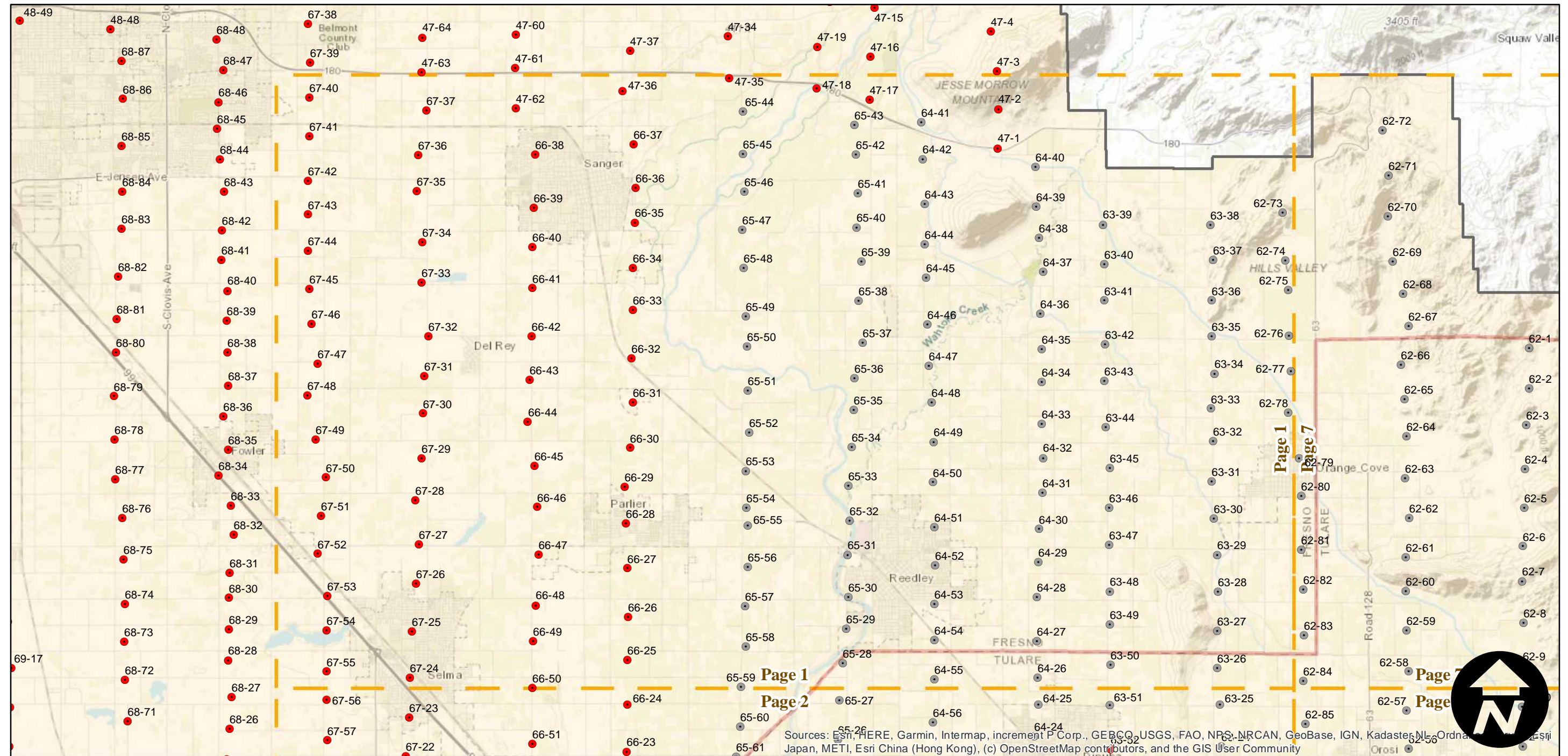
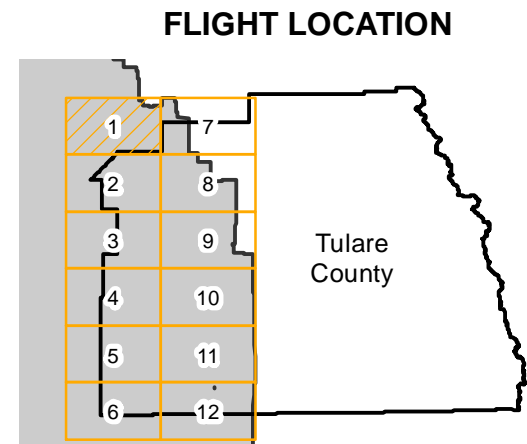
C-4650 (Tulare County)

Counties: Tulare
 Flight date(s): 01-01-1937 to 11-01-1937
 Scale: 1: 20,000
 Overlap: 60%

Complete Metadata:
<http://www.library.ucsb.edu/mil/aerial-photography-tools>

Note: Flights ABN-1937 and ABG-1937 were flown as part of C-4650; Prints for these flights were integrated into C-4650. Imagery acquired from Teledyne 1986 and Whittier College, January 2013.

- MIL owns frame
- MIL does not own frame



0 2.5 5 10 Miles

Index to Aerial Photography
 Page 1 of 12

Scale of this index: 1:125,000

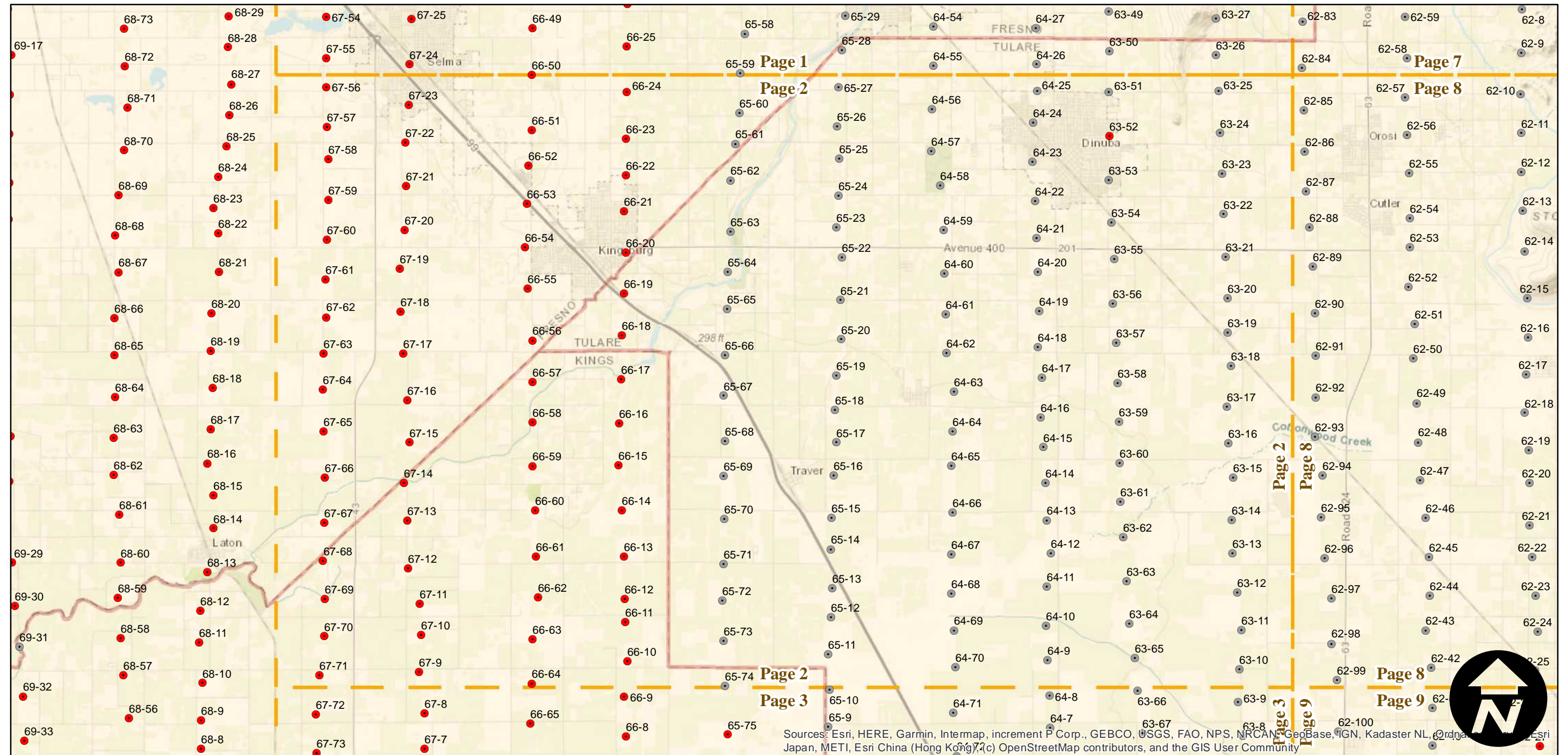
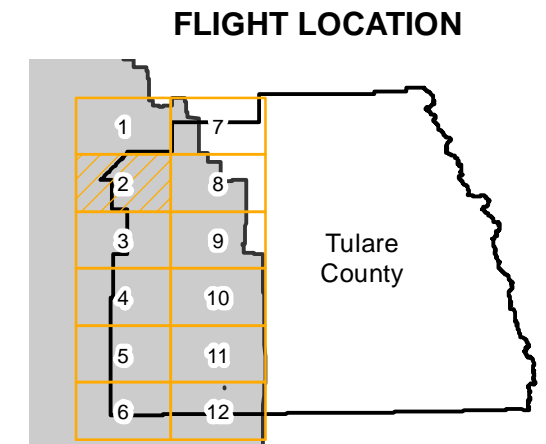
C-4650 (Tulare County)

Counties: Tulare
 Flight date(s): 01-01-1937 to 11-01-1937
 Scale: 1: 20,000
 Overlap: 60%

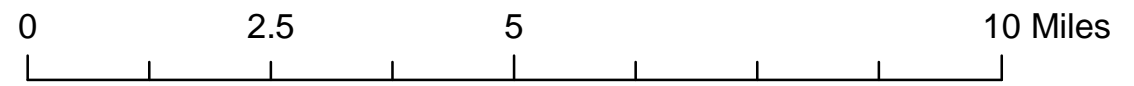
Complete Metadata:
<http://www.library.ucsb.edu/mil/aerial-photography-tools>

Note: Flights ABN-1937 and ABG-1937 were flown as part of C-4650; Prints for these flights were integrated into C-4650. Imagery acquired from Teledyne 1986 and Whittier College, January 2013.

- MIL owns frame
- MIL does not own frame



Sources: Esri, HERE, Garmin, Intermap, increment P Corp., GEBCO, USGS, FAO, NPS, NRCAN, GeoBase, IGN, Kadaster NL, Ordnance Survey, Esri Japan, METI, Esri China (Hong Kong), Swisstopo, Mapbox Contributors, Swisstopo, Svaen, and the GIS User Community



Index to Aerial Photography
 Page 2 of 12

Scale of this index: 1:125,000



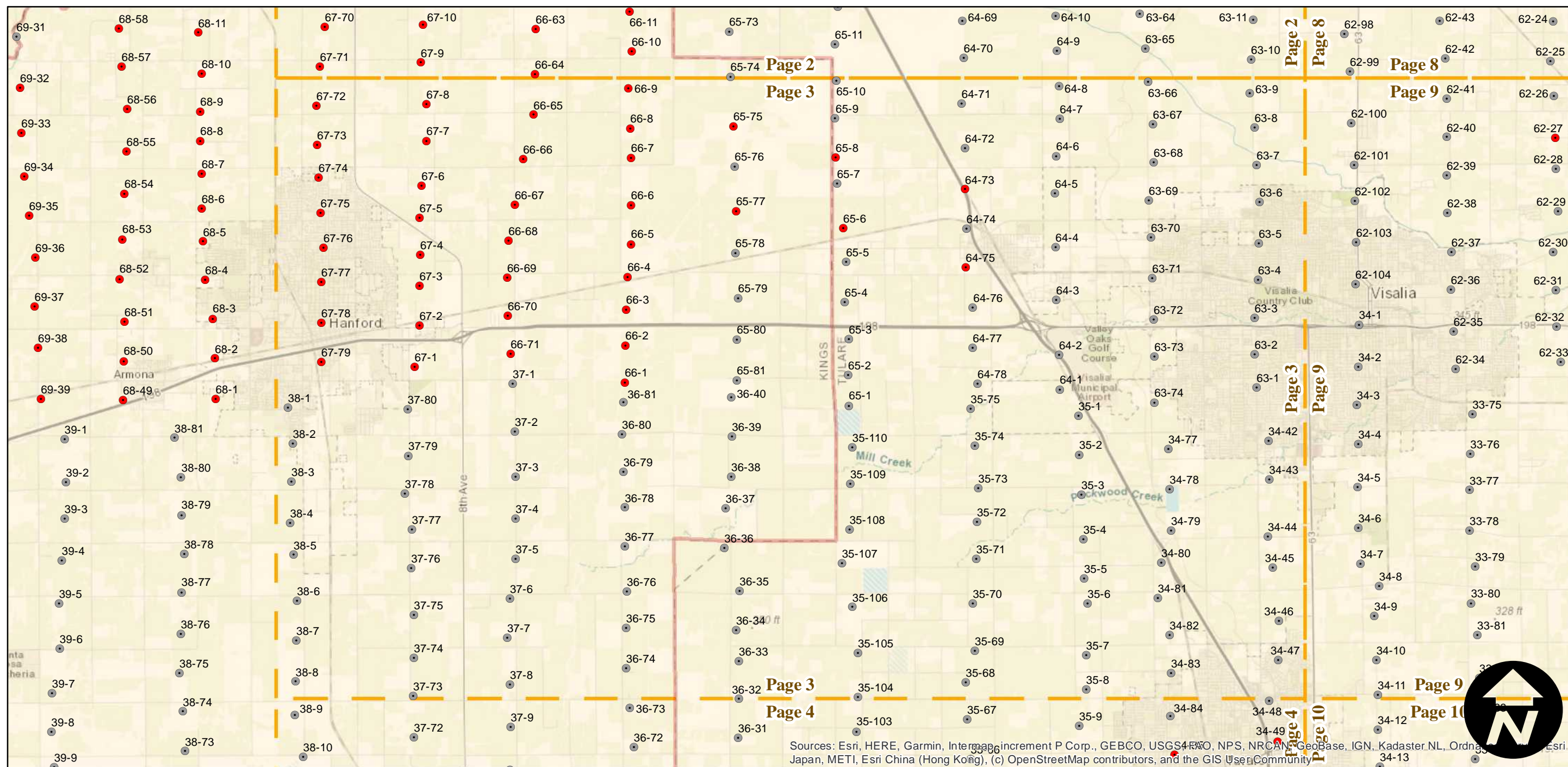
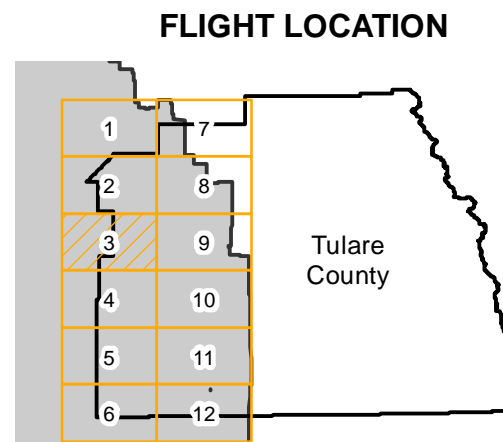
C-4650 (Tulare County)

Counties: Tulare
 Flight date(s): 01-01-1937 to 11-01-1937
 Scale: 1: 20,000
 Overlap: 60%

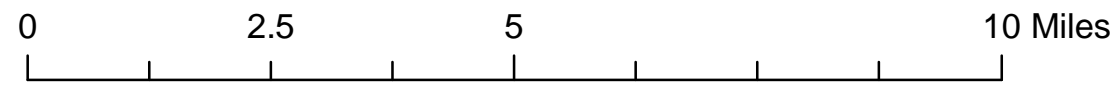
Complete Metadata:
<http://www.library.ucsb.edu/mil/aerial-photography-tools>

Note: Flights ABN-1937 and ABG-1937 were flown as part of C-4650; Prints for these flights were integrated into C-4650. Imagery acquired from Teledyne 1986 and Whittier College, January 2013.

- MIL owns frame
- MIL does not own frame



Sources: Esri, HERE, Garmin, Intermap, increment P Corp., GEBCO, USGS, FAO, NPS, NRCAN, GeoBase, IGN, Kadaster NL, Ordnance Survey, Esri Japan, METI, Esri China (Hong Kong), (c) OpenStreetMap contributors, and the GIS User Community



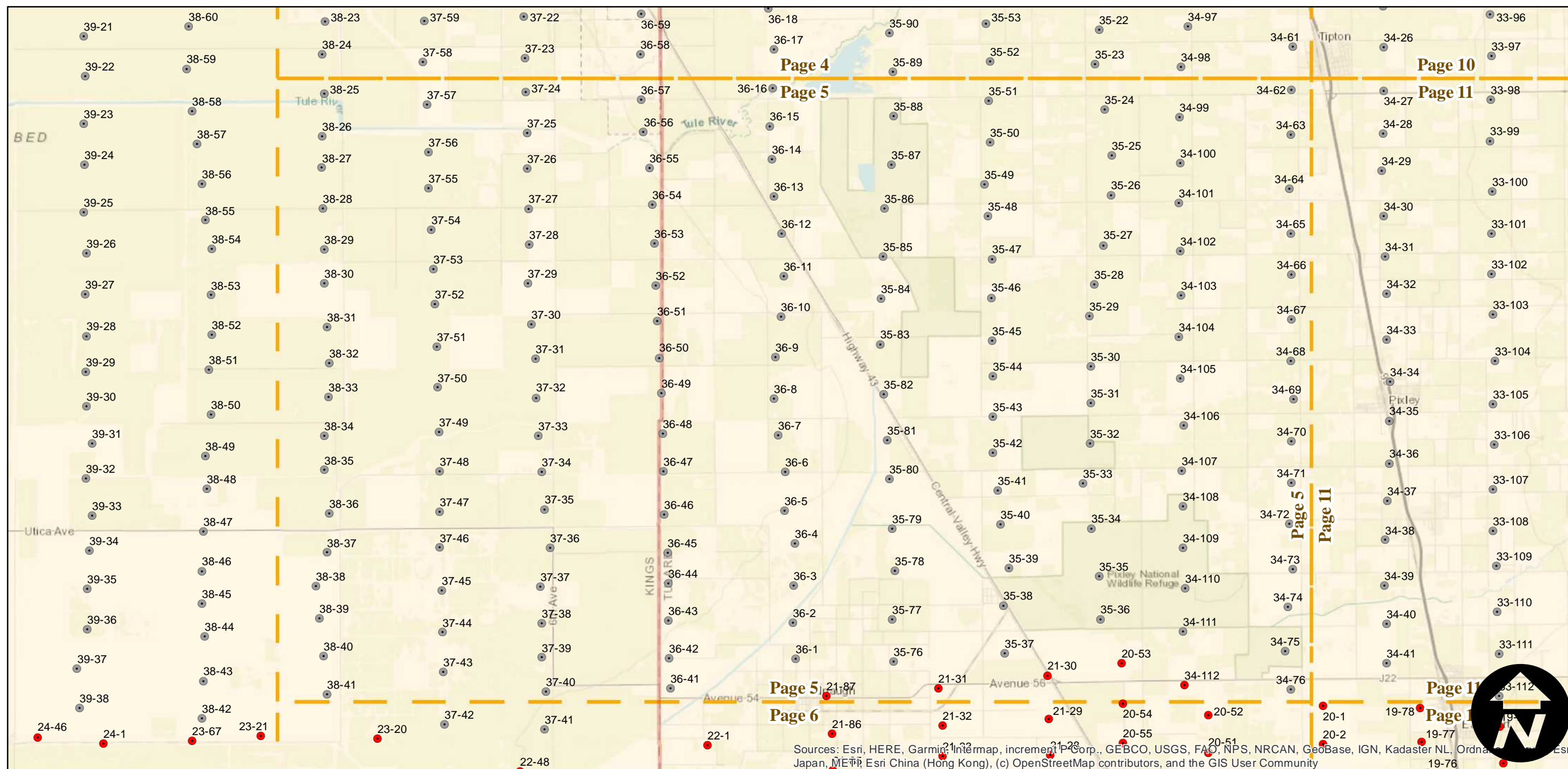
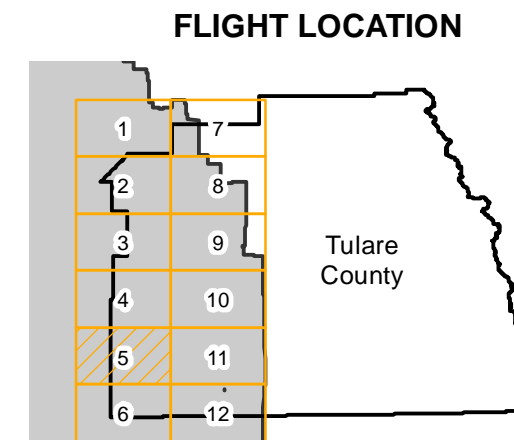
C-4650 (Tulare County)

Counties: Tulare
 Flight date(s): 01-01-1937 to 11-01-1937
 Scale: 1: 20,000
 Overlap: 60%

Note: Flights ABN-1937 and ABG-1937 were flown as part of C-4650; Prints for these flights were integrated into C-4650. Imagery acquired from Teledyne 1986 and Whittier College, January 2013.

Complete Metadata:
<http://www.library.ucsb.edu/mil/aerial-photography-tools>

- MIL owns frame
- MIL does not own frame



Sources: Esri, HERE, Garmin, Intermap, increment P Corp., GEBCO, USGS, FAO, NPS, NRCAN, GeoBase, IGN, Kadaster NL, Ordnance Survey, Esri China (Hong Kong), (c) OpenStreetMap contributors, and the GIS User Community



Index to Aerial Photography
 Page 5 of 12

Scale of this index: 1:125,000

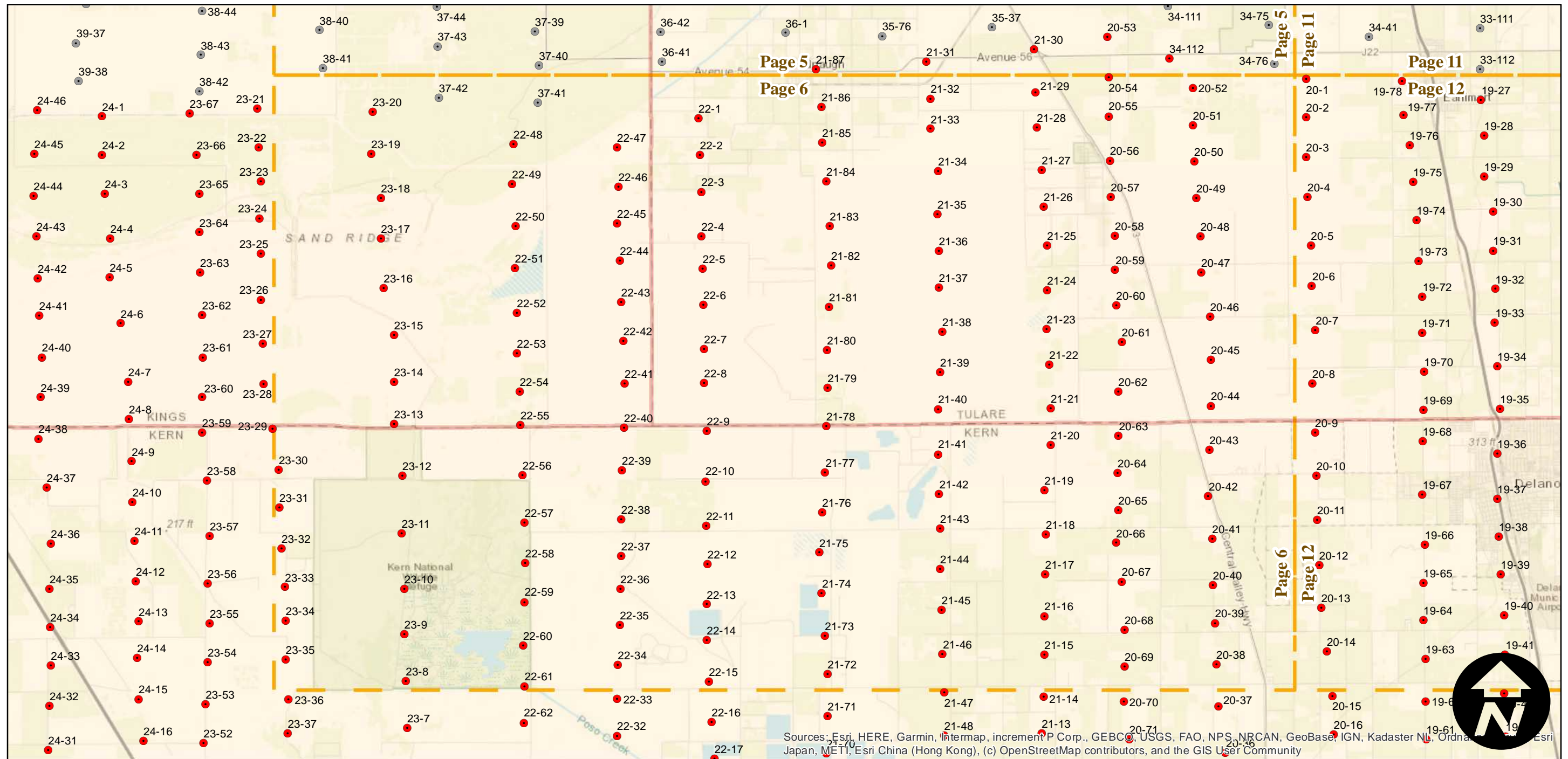
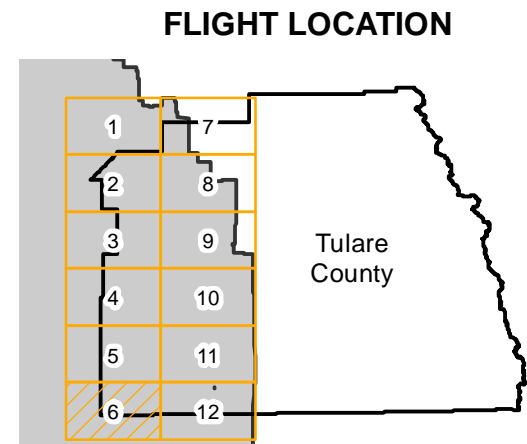
C-4650 (Tulare County)

Counties: Tulare
 Flight date(s): 01-01-1937 to 11-01-1937
 Scale: 1: 20,000
 Overlap: 60%

Note: Flights ABN-1937 and ABG-1937 were flown as part of C-4650; Prints for these flights were integrated into C-4650. Imagery acquired from Teledyne 1986 and Whittier College, January 2013.

Complete Metadata:
<http://www.library.ucsb.edu/mil/aerial-photography-tools>

- MIL owns frame
- MIL does not own frame



Sources: Esri, HERE, Garmin, Intermap, increment P Corp., GEBCO, USGS, FAO, NPS, NRCAN, GeoBase, IGN, Kadaster NL, Ordnance Survey, Esri Japan, METI, Esri China (Hong Kong), (c) OpenStreetMap contributors, and the GIS User Community

0 2.5 5 10 Miles

Index to Aerial Photography
 Page 6 of 12

Scale of this index: 1:125,000

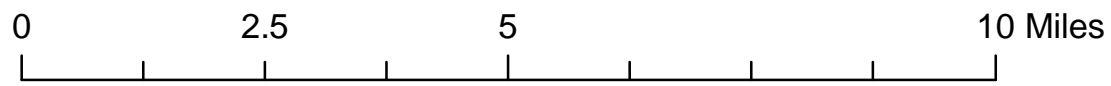
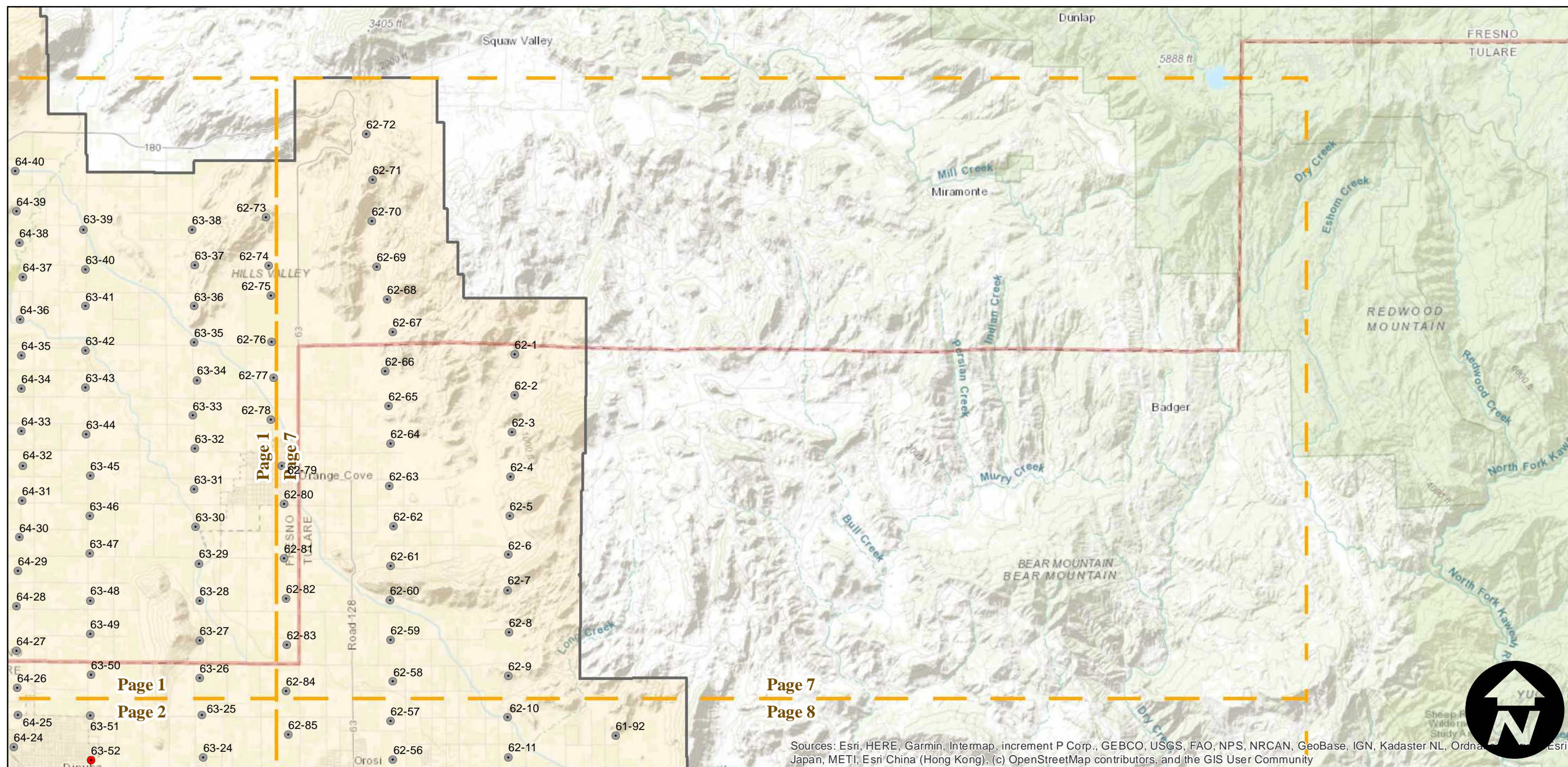
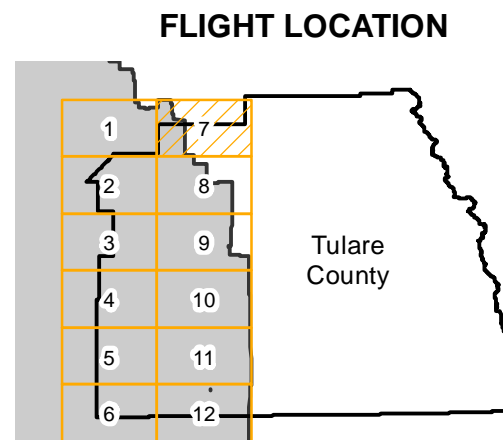
C-4650 (Tulare County)

Counties: Tulare
 Flight date(s): 01-01-1937 to 11-01-1937
 Scale: 1: 20,000
 Overlap: 60%

Complete Metadata:
<http://www.library.ucsb.edu/mil/aerial-photography-tools>

Note: Flights ABN-1937 and ABG-1937 were flown as part of C-4650; Prints for these flights were integrated into C-4650. Imagery acquired from Teledyne 1986 and Whittier College, January 2013.

- MIL owns frame
- MIL does not own frame



Sources: Esri, HERE, Garmin, Intermap, increment P Corp., GEBCO, USGS, FAO, NPS, NRCAN, GeoBase, IGN, Kadaster NL, Ordnance Survey, Esri Japan, METI, Esri China (Hong Kong), (c) OpenStreetMap contributors, and the GIS User Community

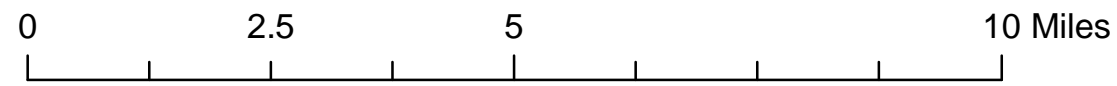
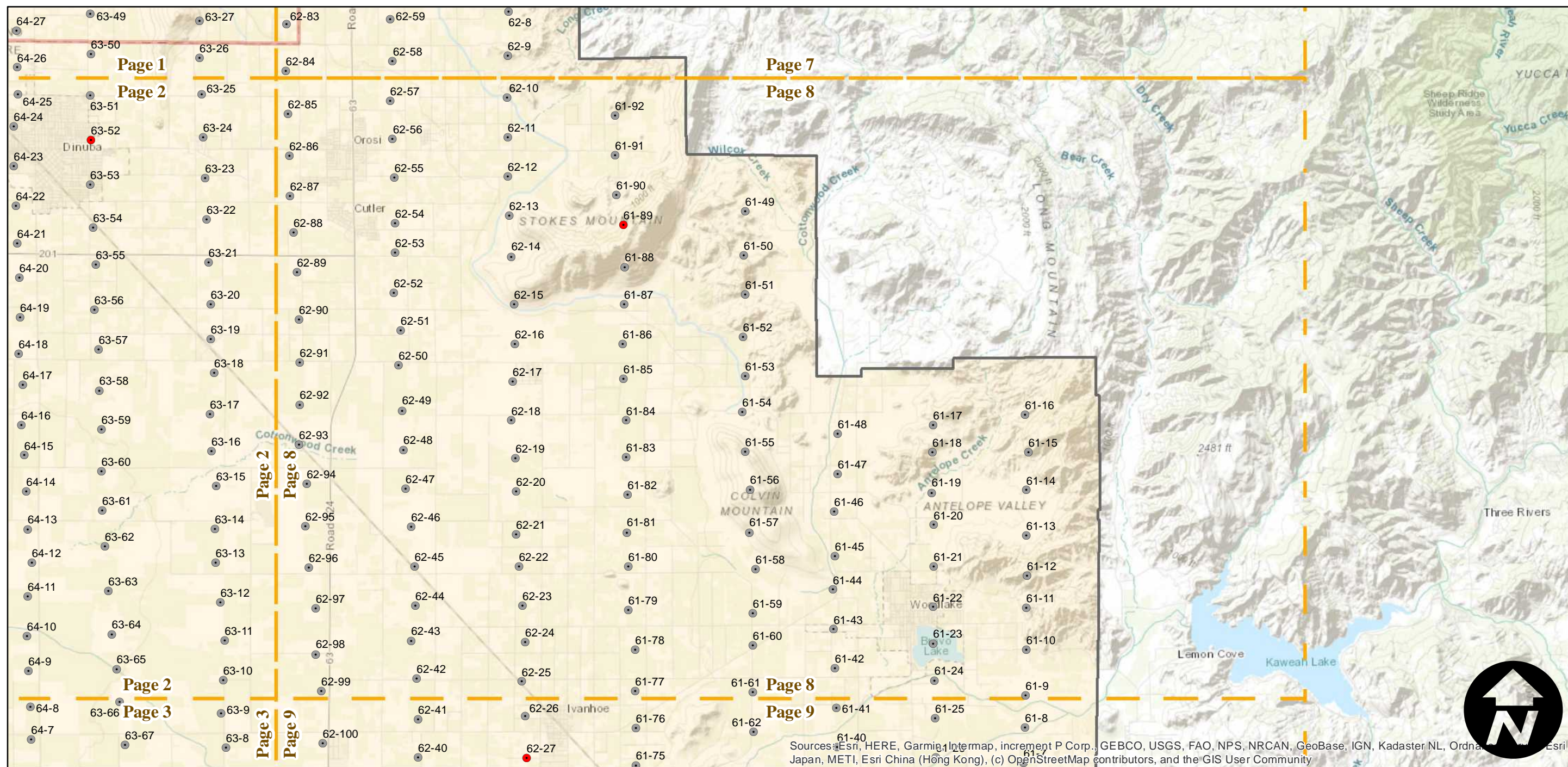
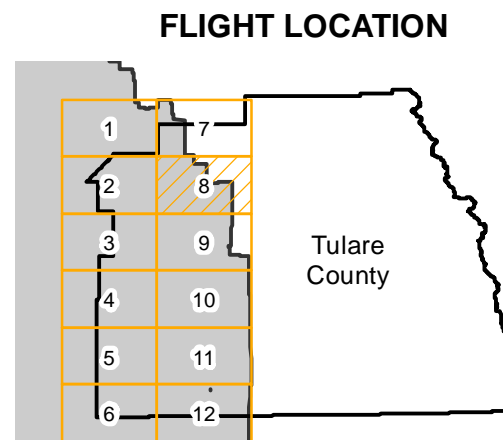
C-4650 (Tulare County)

Counties: Tulare
 Flight date(s): 01-01-1937 to 11-01-1937
 Scale: 1: 20,000
 Overlap: 60%

Complete Metadata:
<http://www.library.ucsb.edu/mil/aerial-photography-tools>

Note: Flights ABN-1937 and ABG-1937 were flown as part of C-4650; Prints for these flights were integrated into C-4650. Imagery acquired from Teledyne 1986 and Whittier College, January 2013.

- MIL owns frame
- MIL does not own frame



Sources: Esri, HERE, Garmin, Intermap, increment P Corp., GEBCO, USGS, FAO, NPS, NRCAN, GeoBase, IGN, Kadaster NL, Ordnance Survey, Esri Japan, METI, Esri China (Hong Kong), (c) OpenStreetMap contributors, and the GIS User Community

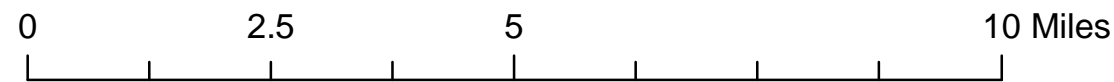
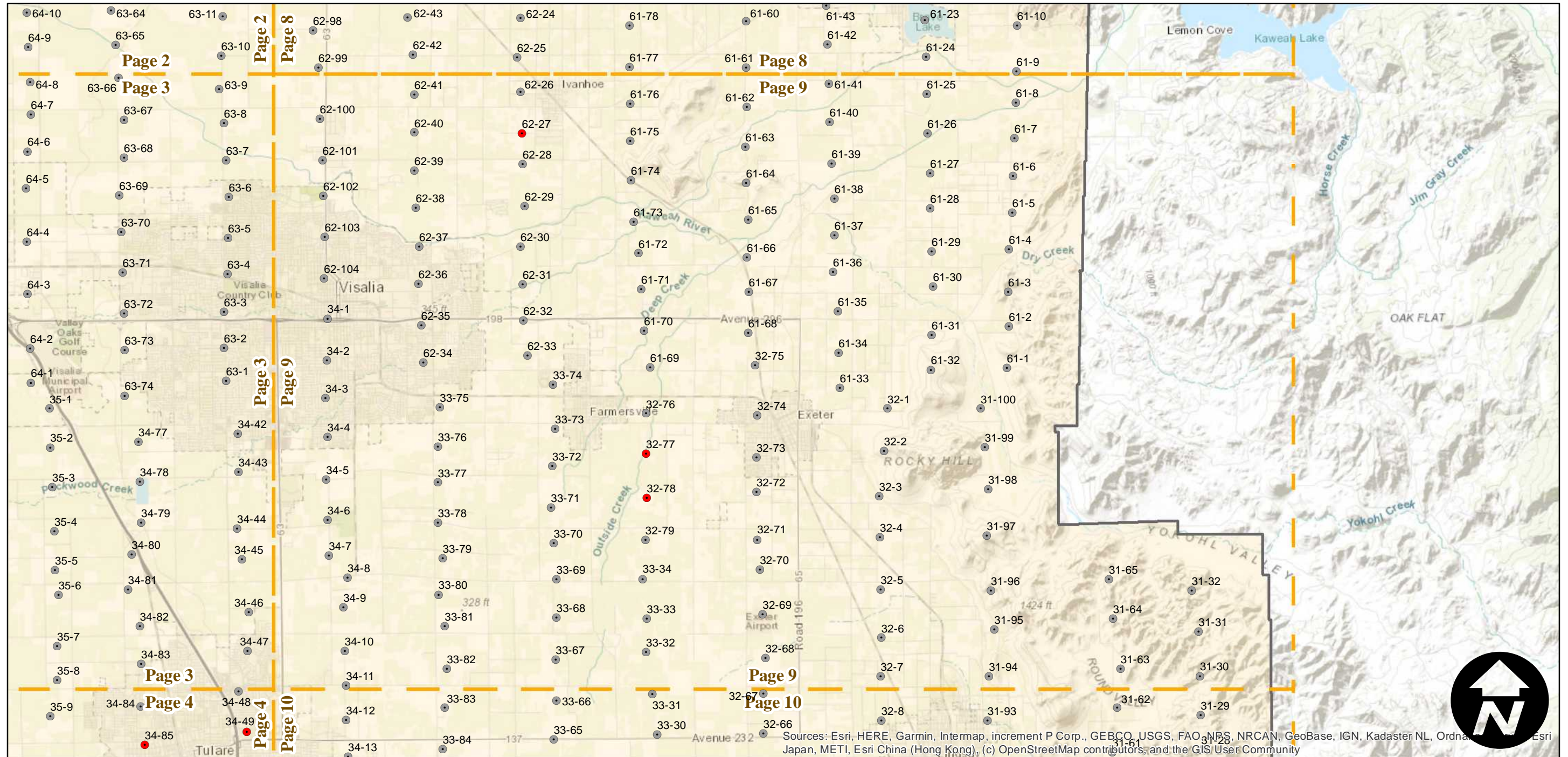
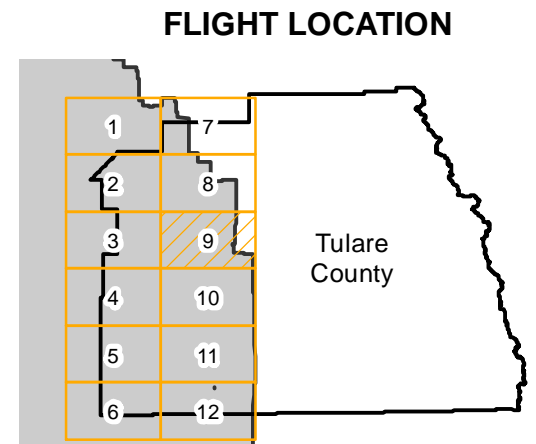
C-4650 (Tulare County)

Counties: Tulare
 Flight date(s): 01-01-1937 to 11-01-1937
 Scale: 1: 20,000
 Overlap: 60%

Note: Flights ABN-1937 and ABG-1937 were flown as part of C-4650; Prints for these flights were integrated into C-4650. Imagery acquired from Teledyne 1986 and Whittier College, January 2013.

Complete Metadata:
<http://www.library.ucsb.edu/mil/aerial-photography-tools>

- MIL owns frame
- MIL does not own frame



Sources: Esri, HERE, Garmin, Intermap, increment P Corp., GEBCO, USGS, FAO, NBS, NRCAN, GeoBase, IGN, Kadaster NL, Ordnance Survey, Esri Japan, METI, Esri China (Hong Kong), (c) OpenStreetMap contributors, and the GIS User Community

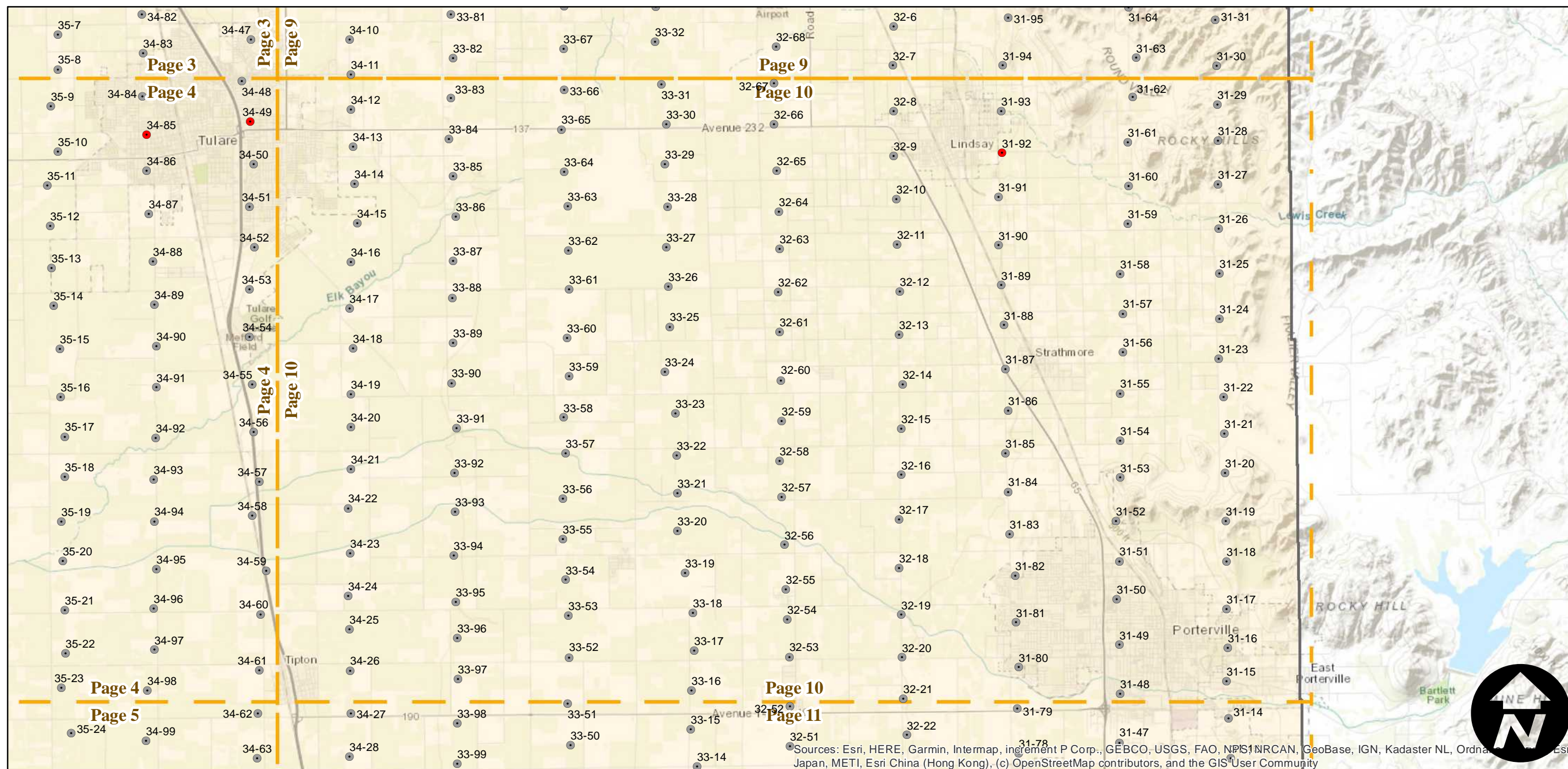
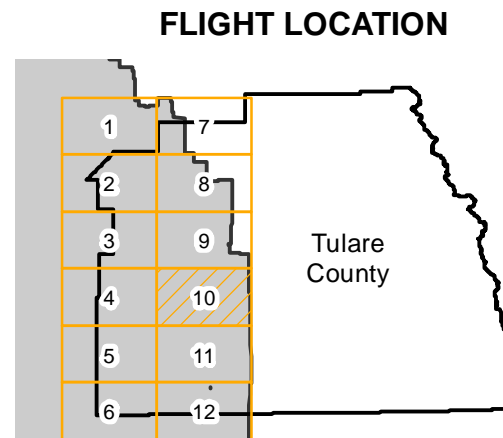
C-4650 (Tulare County)

Counties: Tulare
 Flight date(s): 01-01-1937 to 11-01-1937
 Scale: 1: 20,000
 Overlap: 60%

Note: Flights ABN-1937 and ABG-1937 were flown as part of C-4650; Prints for these flights were integrated into C-4650. Imagery acquired from Teledyne 1986 and Whittier College, January 2013.

Complete Metadata:
<http://www.library.ucsb.edu/mil/aerial-photography-tools>

- MIL owns frame
- MIL does not own frame



Sources: Esri, HERE, Garmin, Intermap, increment P Corp., GEBCO, USGS, FAO, NPS, NRCAN, GeoBase, IGN, Kadaster NL, Ordnance Survey, Esri Japan, METI, Esri China (Hong Kong), (c) OpenStreetMap contributors, and the GIS User Community



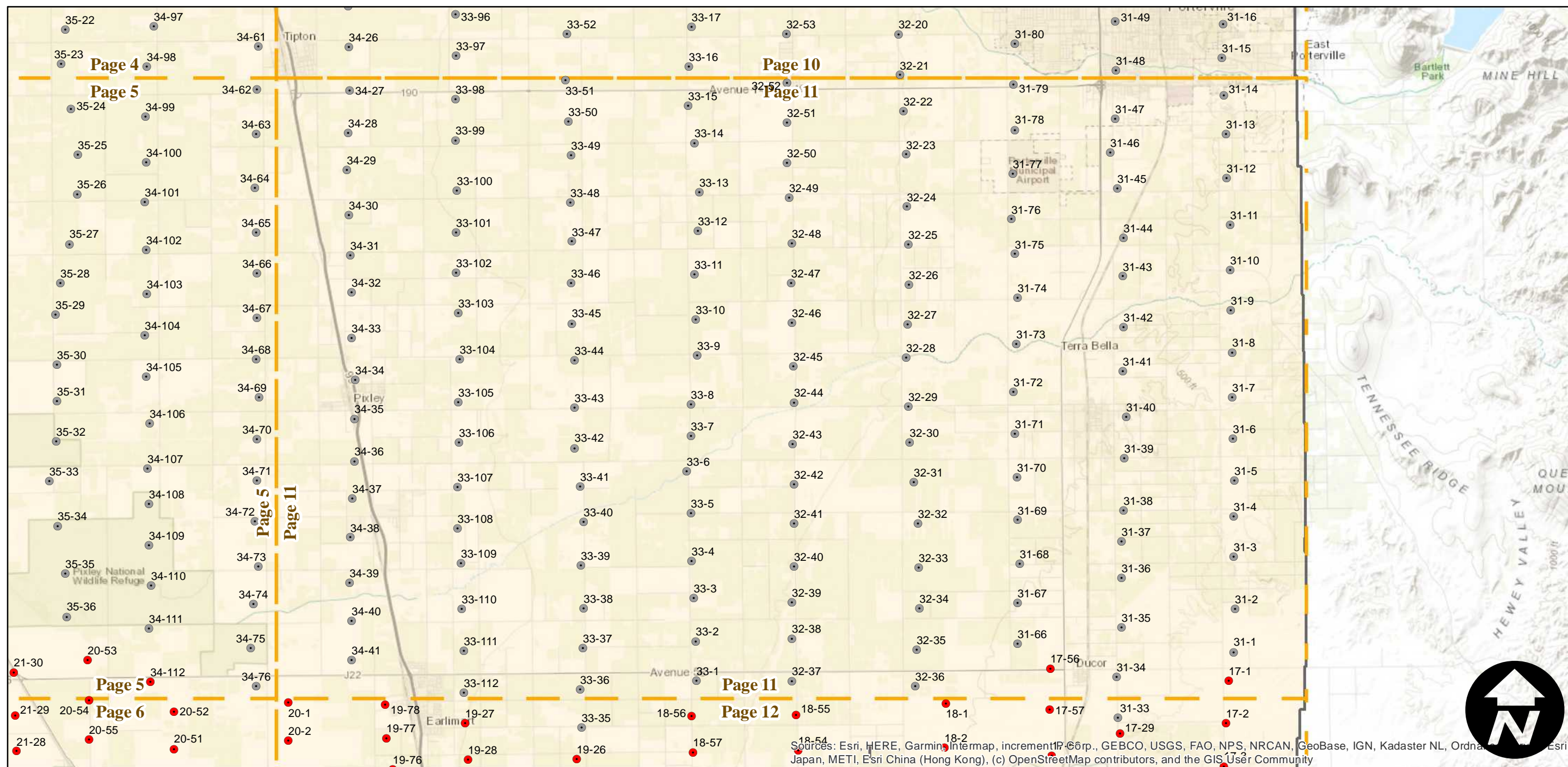
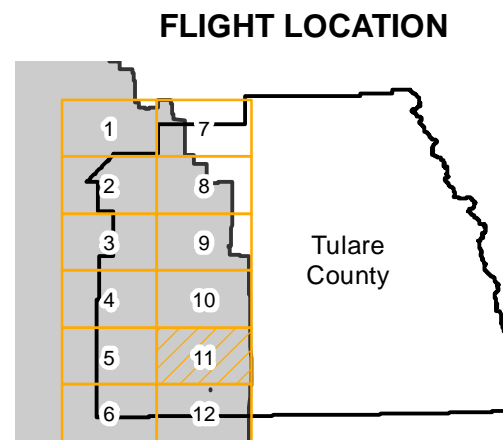
C-4650 (Tulare County)

Counties: Tulare
 Flight date(s): 01-01-1937 to 11-01-1937
 Scale: 1: 20,000
 Overlap: 60%

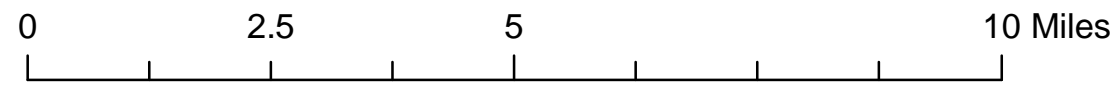
Complete Metadata:
<http://www.library.ucsb.edu/mil/aerial-photography-tools>

Note: Flights ABN-1937 and ABG-1937 were flown as part of C-4650; Prints for these flights were integrated into C-4650. Imagery acquired from Teledyne 1986 and Whittier College, January 2013.

- MIL owns frame
- MIL does not own frame



Sources: Esri, HERE, Garmin, Intermap, incrementP Corp., GEBCO, USGS, FAO, NPS, NRCAN, GeoBase, IGN, Kadaster NL, Ordnance Survey, Esri Japan, METI, Esri China (Hong Kong), (c) OpenStreetMap contributors, and the GIS User Community



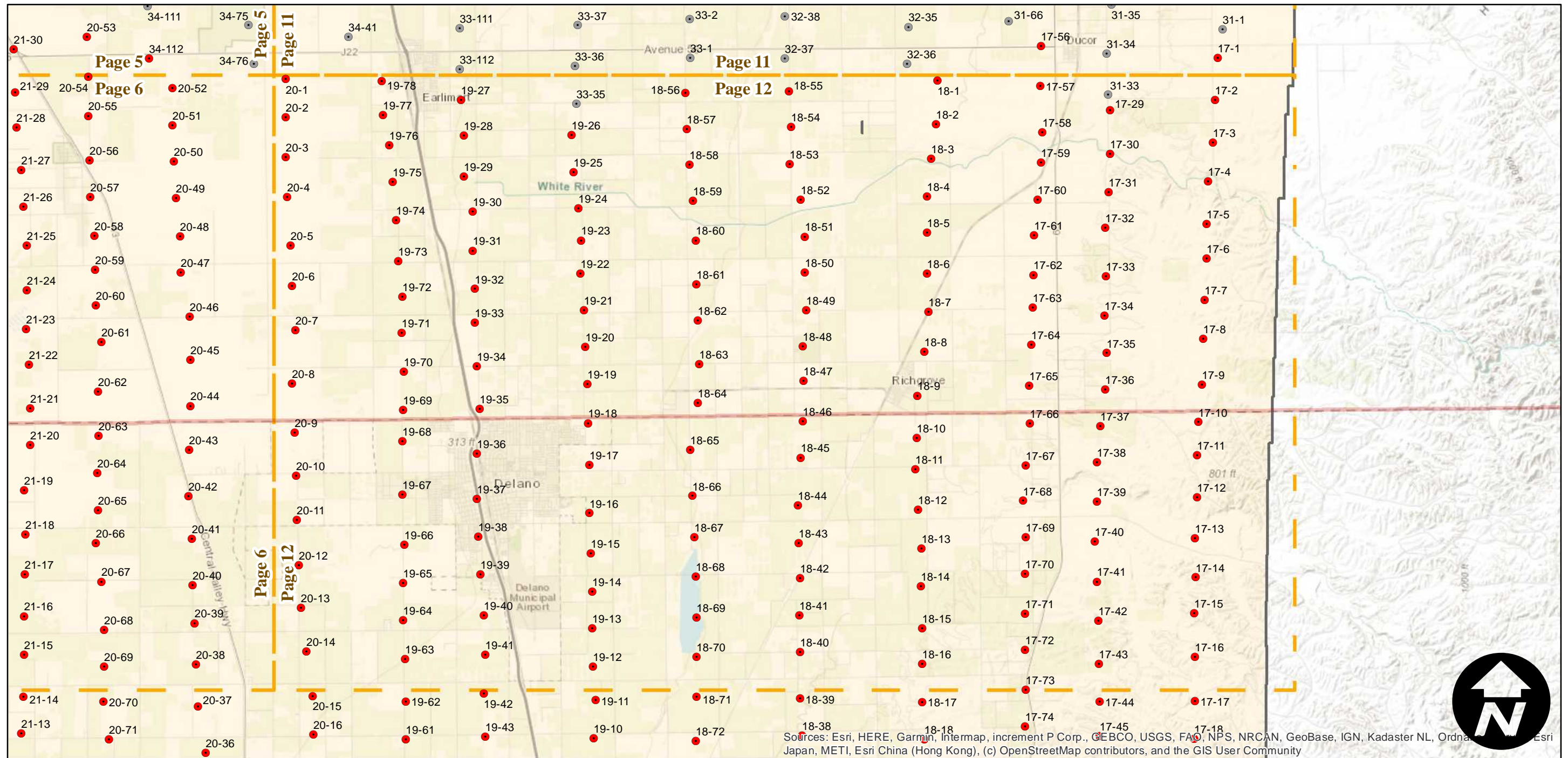
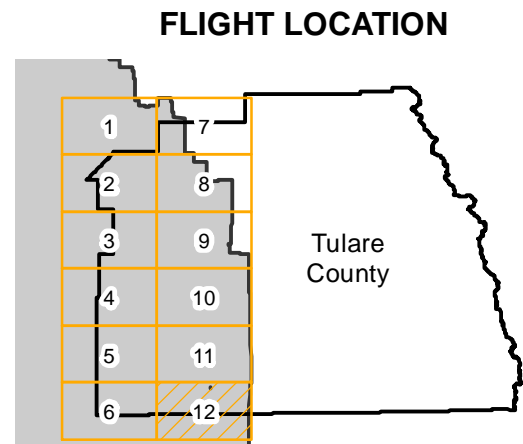
C-4650 (Tulare County)

Counties: Tulare
 Flight date(s): 01-01-1937 to 11-01-1937
 Scale: 1:20,000
 Overlap: 60%

Complete Metadata:
<http://www.library.ucsb.edu/mil/aerial-photography-tools>

Note: Flights ABN-1937 and ABG-1937 were flown as part of C-4650; Prints for these flights were integrated into C-4650. Imagery acquired from Teledyne 1986 and Whittier College, January 2013.

- MIL owns frame
- MIL does not own frame



Sources: Esri, HERE, Garmin, Intermap, increment P Corp., GEBCO, USGS, FAO, NPS, NRCAN, GeoBase, IGN, Kadaster NL, Ordnance Survey, Esri Japan, METI, Esri China (Hong Kong), (c) OpenStreetMap contributors, and the GIS User Community

