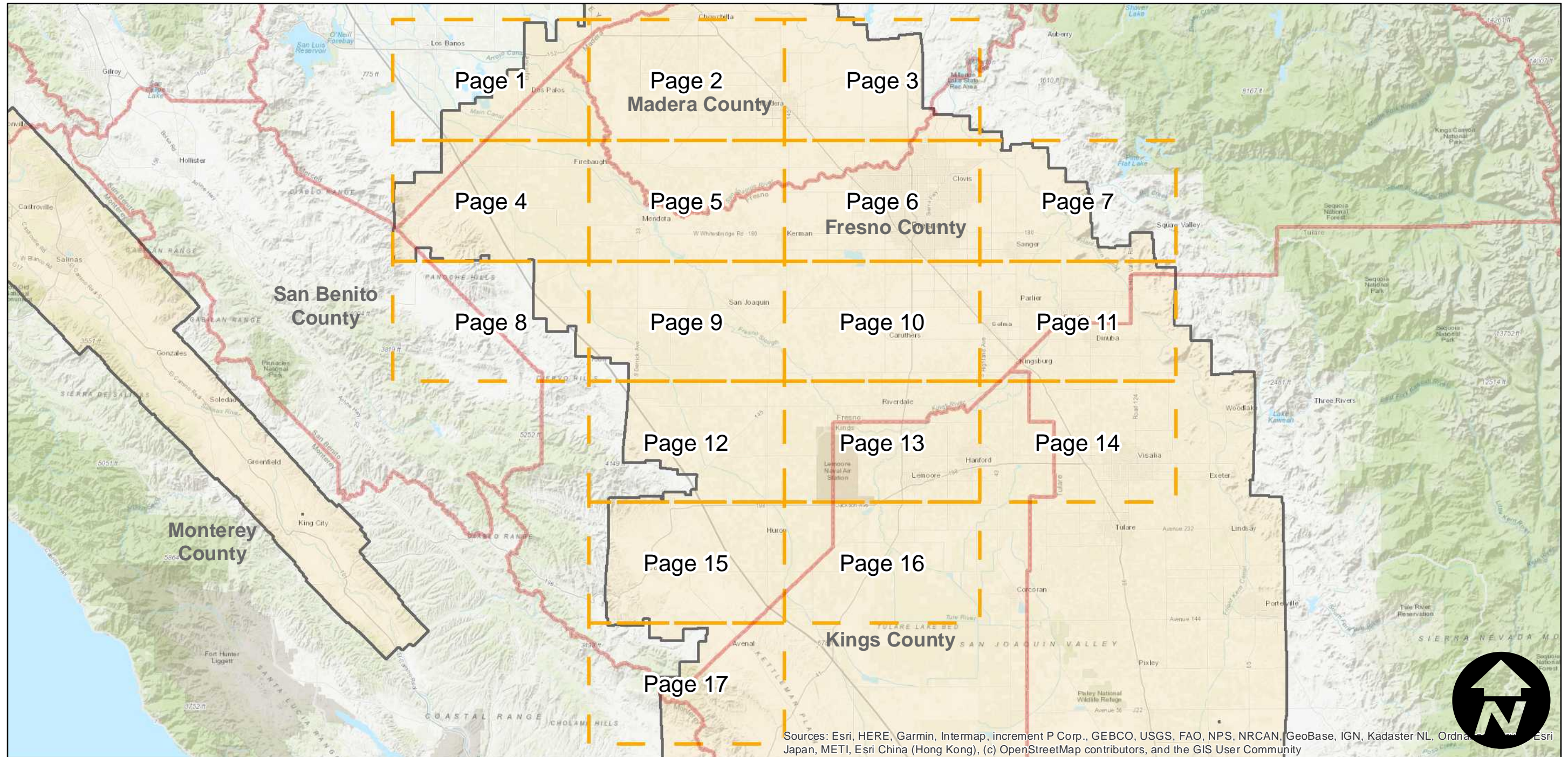
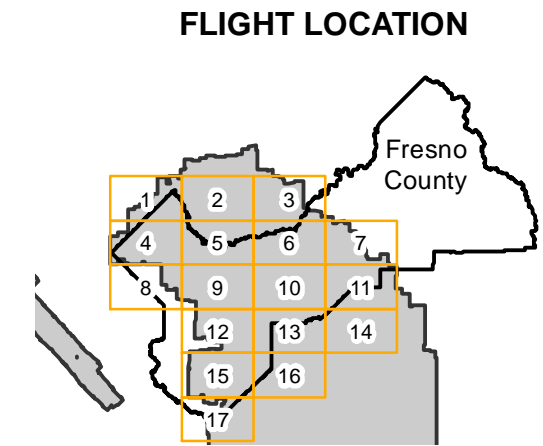


C-4650 (Fresno County)

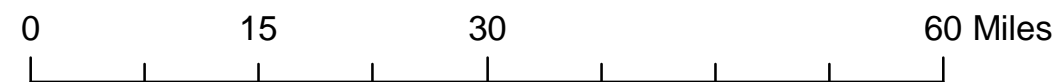
Counties: Fresno
Flight date(s): 01-01-1937 to 11-01-1937
Scale: 1: 20,000
Overlap: 60%

Note: Flights ABN-1937 and ABG-1937 were flown as part of C-4650; Prints for these flights were integrated into C-4650. Imagery acquired from Teledyne 1986 and Whittier College, January 2013.

Complete Metadata:
<http://www.library.ucsb.edu/mil/aerial-photography-tools>



Sources: Esri, HERE, Garmin, Intermap, increment P Corp., GEBCO, USGS, FAO, NPS, NRCAN, GeoBase, IGN, Kadaster NL, Ordnance Survey, Esri Japan, METI, Esri China (Hong Kong), (c) OpenStreetMap contributors, and the GIS User Community



Index to Aerial Photography
Page Key

Scale of this index: 1:800,000

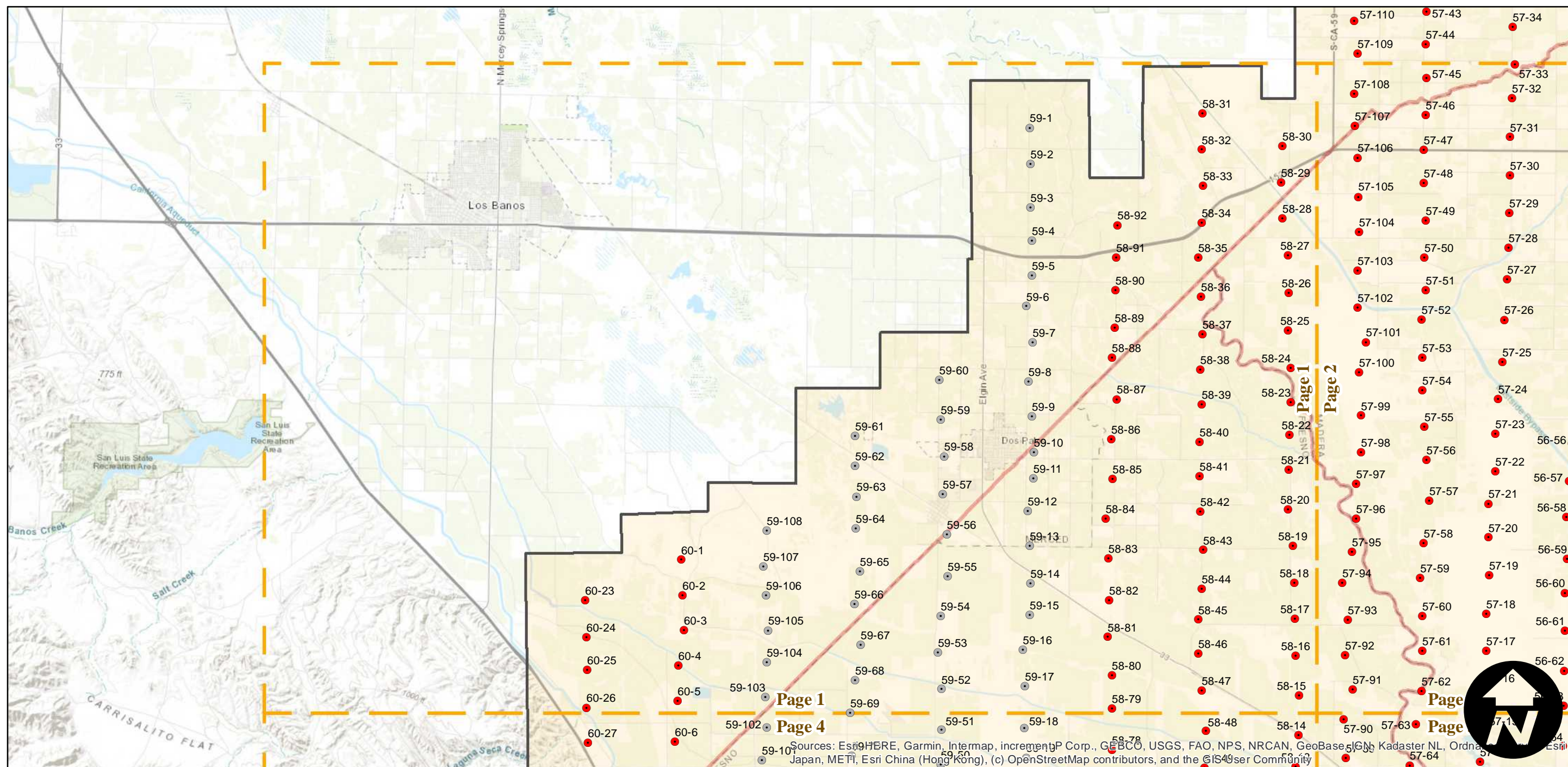
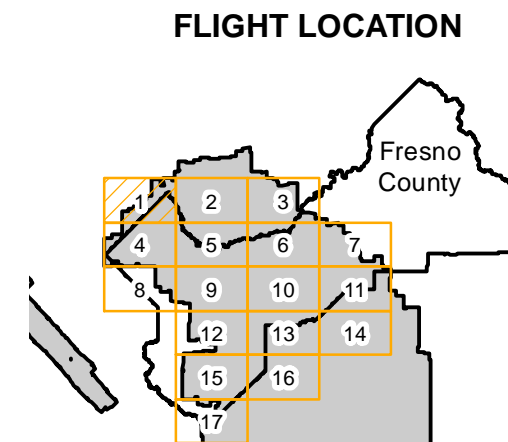
C-4650 (Fresno County)

Counties: Fresno
 Flight date(s): 01-01-1937 to 11-01-1937
 Scale: 1: 20,000
 Overlap: 60%

Complete Metadata:
<http://www.library.ucsb.edu/mil/aerial-photography-tools>

Note: Flights ABN-1937 and ABG-1937 were flown as part of C-4650; Prints for these flights were integrated into C-4650. Imagery acquired from Teledyne 1986 and Whittier College, January 2013.

- MIL owns frame
- MIL does not own frame



0 2.5 5 10 Miles

Index to Aerial Photography
 Page 1 of 17

Scale of this index: 1:150,000

Sources: Esri, HERE, Garmin, Intermap, incrementP Corp., GEBCO, USGS, FAO, NPS, NRCAN, GeoBase, IGN, Kadaster NL, Ordnance Survey, Esri Japan, METI, Esri China (Hong Kong), (c) OpenStreetMap contributors, and the GIS User Community



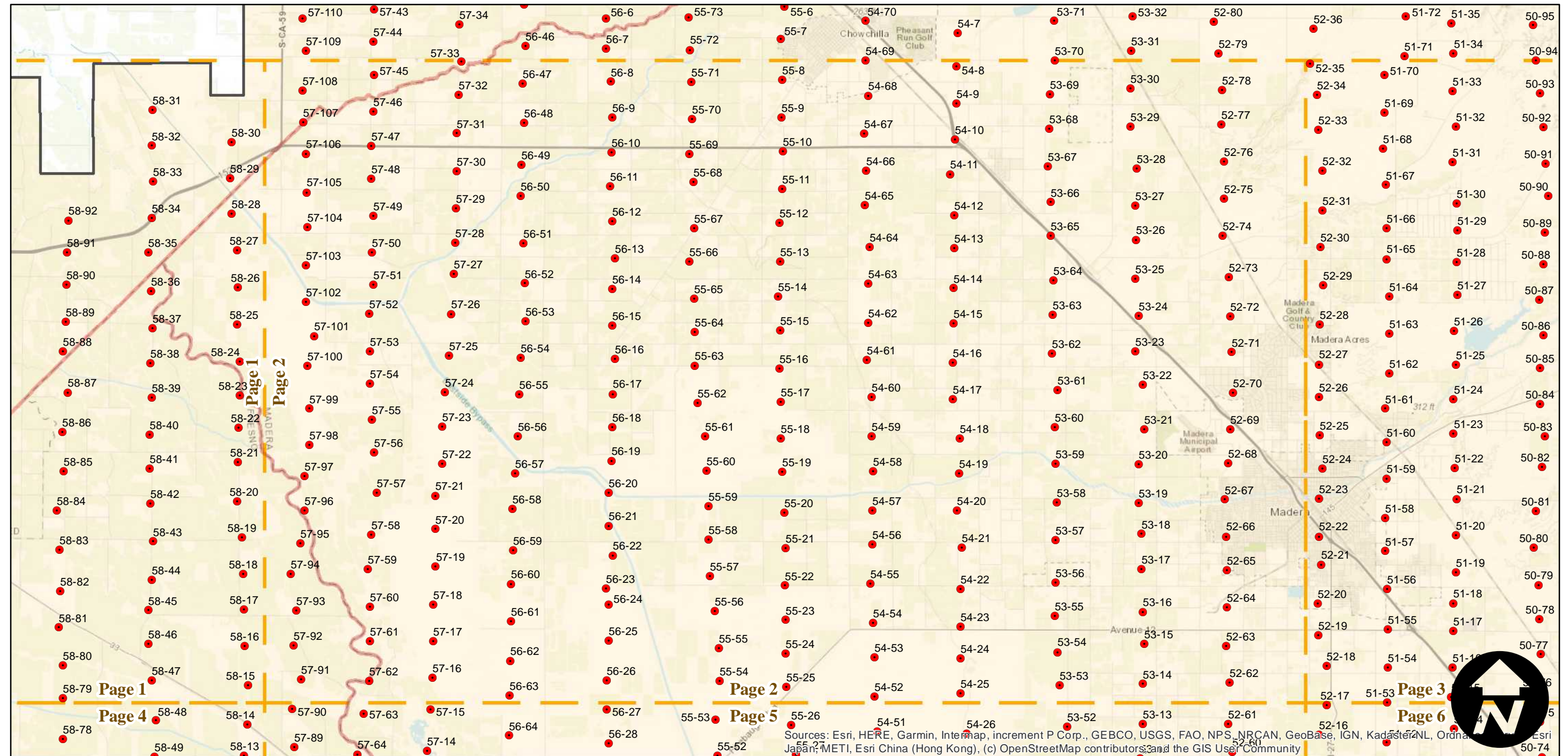
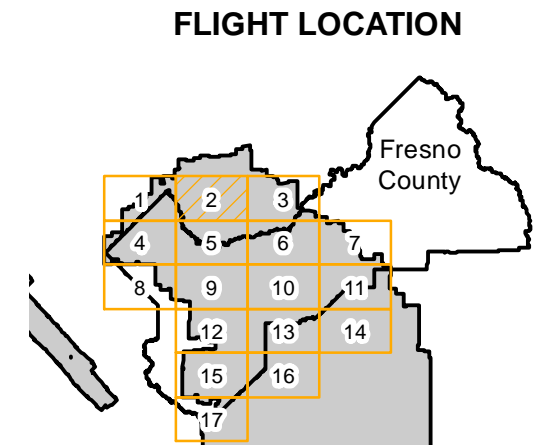
C-4650 (Fresno County)

Counties: Fresno
 Flight date(s): 01-01-1937 to 11-01-1937
 Scale: 1: 20,000
 Overlap: 60%

Complete Metadata:
<http://www.library.ucsb.edu/mil/aerial-photography-tools>

Note: Flights ABN-1937 and ABG-1937 were flown as part of C-4650; Prints for these flights were integrated into C-4650. Imagery acquired from Teledyne 1986 and Whittier College, January 2013.

- MIL owns frame
- MIL does not own frame



0 2.5 5 10 Miles

Index to Aerial Photography
 Page 2 of 17

Scale of this index: 1:150,000

Sources: Esri, HERE, Garmin, Intermap, increment P Corp., GEBCO, USGS, FAO, NPS, NRCAN, GeoBase, IGN, Kadaster NL, Ordnance Survey, Esri Japan, METI, Esri China (Hong Kong), (c) OpenStreetMap contributors, and the GIS User Community

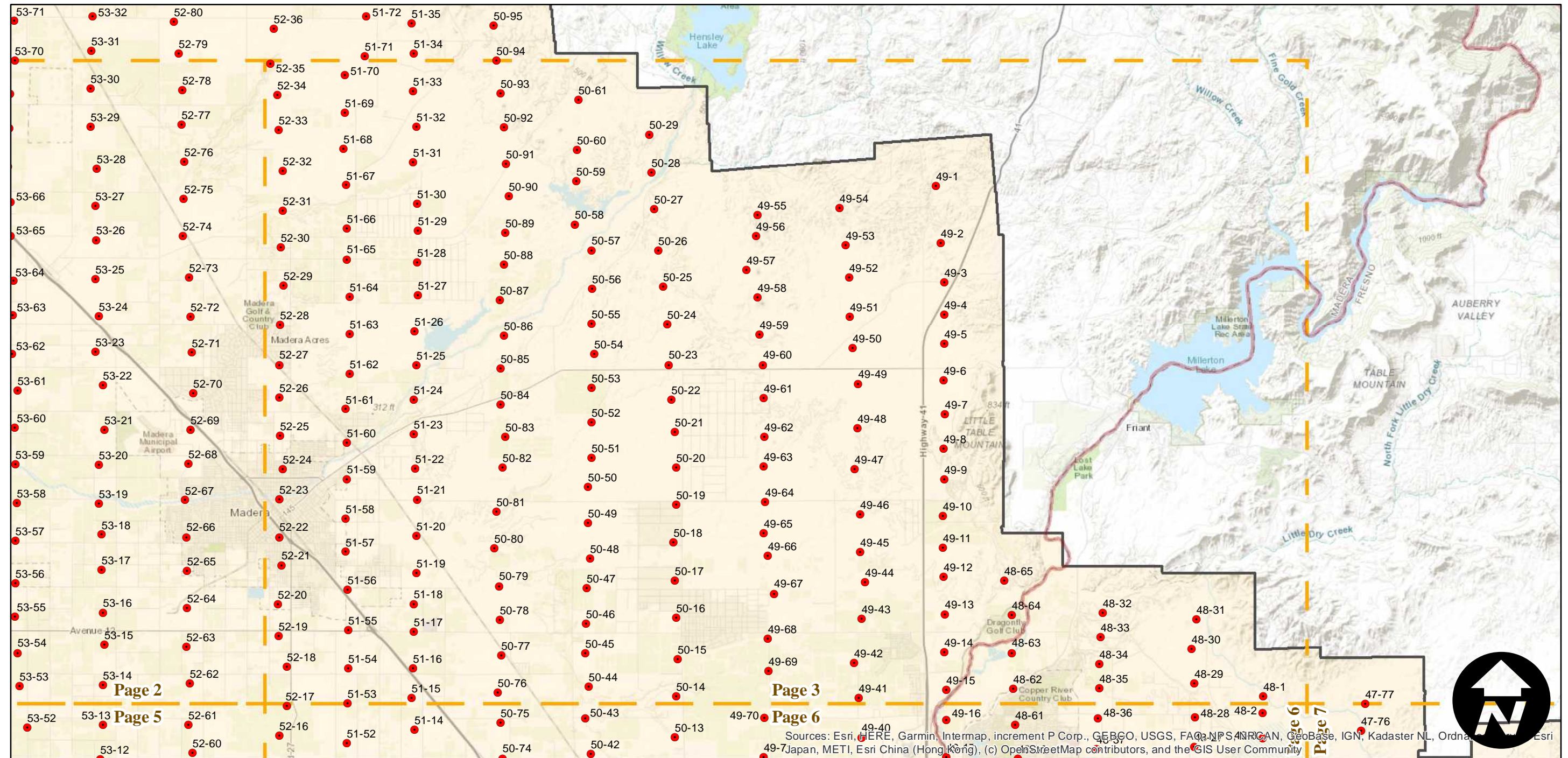
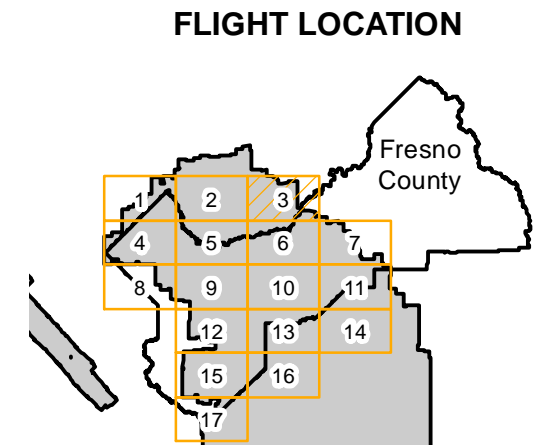
C-4650 (Fresno County)

Counties: Fresno
 Flight date(s): 01-01-1937 to 11-01-1937
 Scale: 1: 20,000
 Overlap: 60%

Complete Metadata:
<http://www.library.ucsb.edu/mil/aerial-photography-tools>

Note: Flights ABN-1937 and ABG-1937 were flown as part of C-4650; Prints for these flights were integrated into C-4650. Imagery acquired from Teledyne 1986 and Whittier College, January 2013.

- MIL owns frame
- MIL does not own frame



Sources: Esri, HERE, Garmin, Intermap, increment P Corp., GEBCO, USGS, FAO, NPS, NRCAN, GeoBase, IGN, Kadaster NL, Ordnance Survey, Esri Japan, METI, Esri China (Hong Kong), (c) OpenStreetMap contributors, and the GIS User Community



0 2.5 5 10 Miles

Index to Aerial Photography
 Page 3 of 17

Scale of this index: 1:150,000

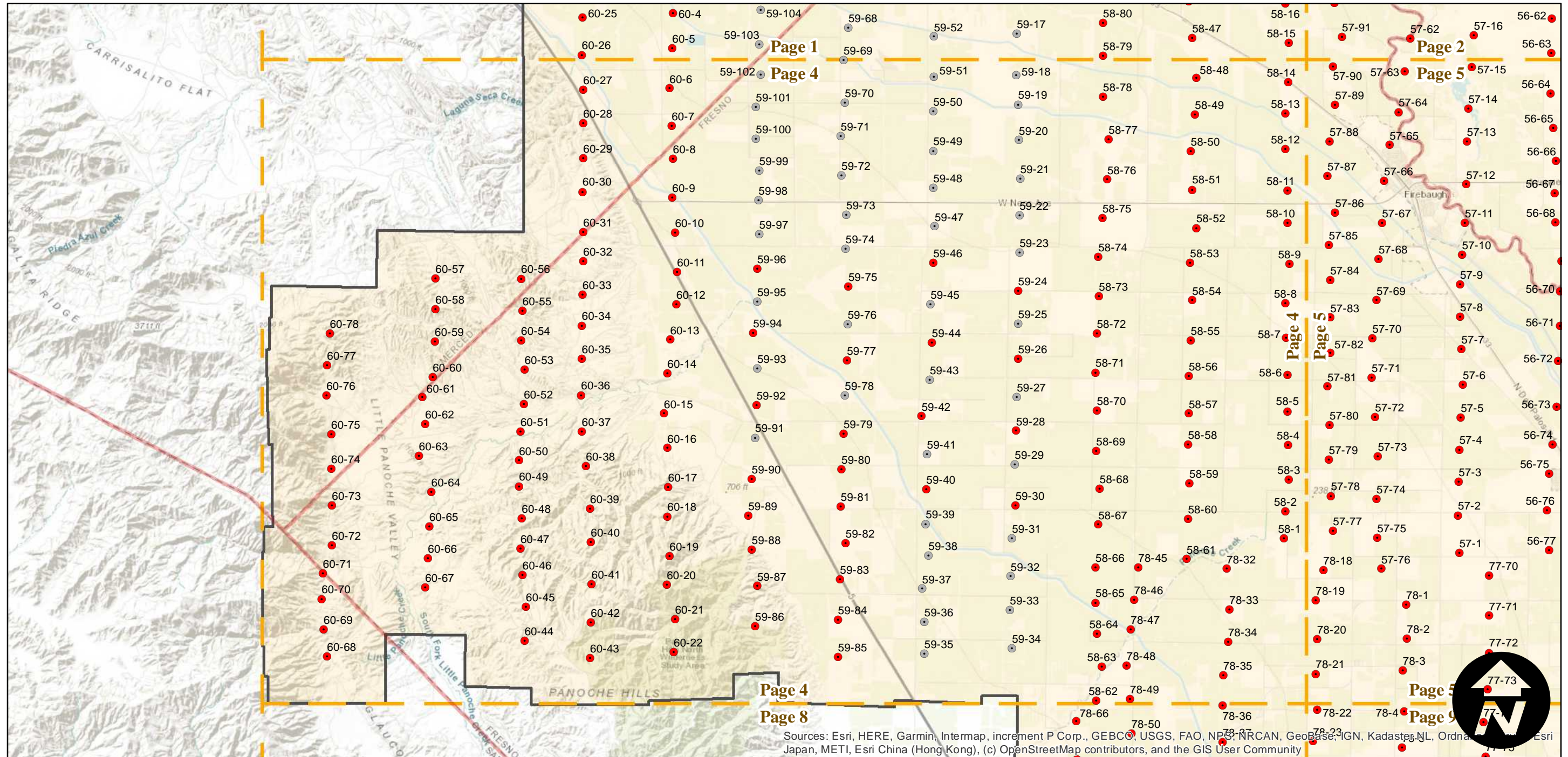
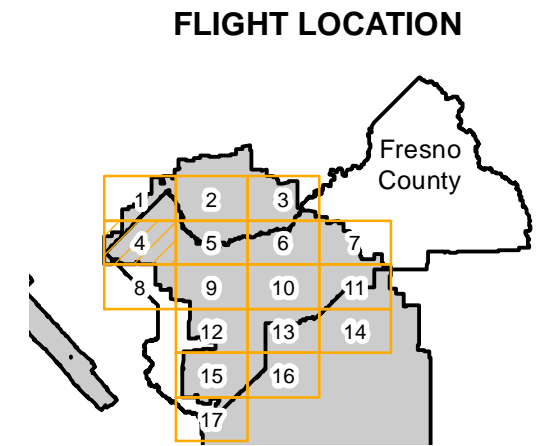
C-4650 (Fresno County)

Counties: Fresno
 Flight date(s): 01-01-1937 to 11-01-1937
 Scale: 1: 20,000
 Overlap: 60%

Complete Metadata:
<http://www.library.ucsb.edu/mil/aerial-photography-tools>

Note: Flights ABN-1937 and ABG-1937 were flown as part of C-4650; Prints for these flights were integrated into C-4650. Imagery acquired from Teledyne 1986 and Whittier College, January 2013.

- MIL owns frame
- MIL does not own frame



Sources: Esri, HERE, Garmin, Intermap, increment P Corp., GEBCO, USGS, FAO, NPS, NRCAN, Geobase, IGN, Kadaster NL, Ordnance Survey, Esri Japan, METI, Esri China (Hong Kong), (c) OpenStreetMap contributors, and the GIS User Community

0 2.5 5 10 Miles

Index to Aerial Photography
 Page 4 of 17

Scale of this index: 1:150,000

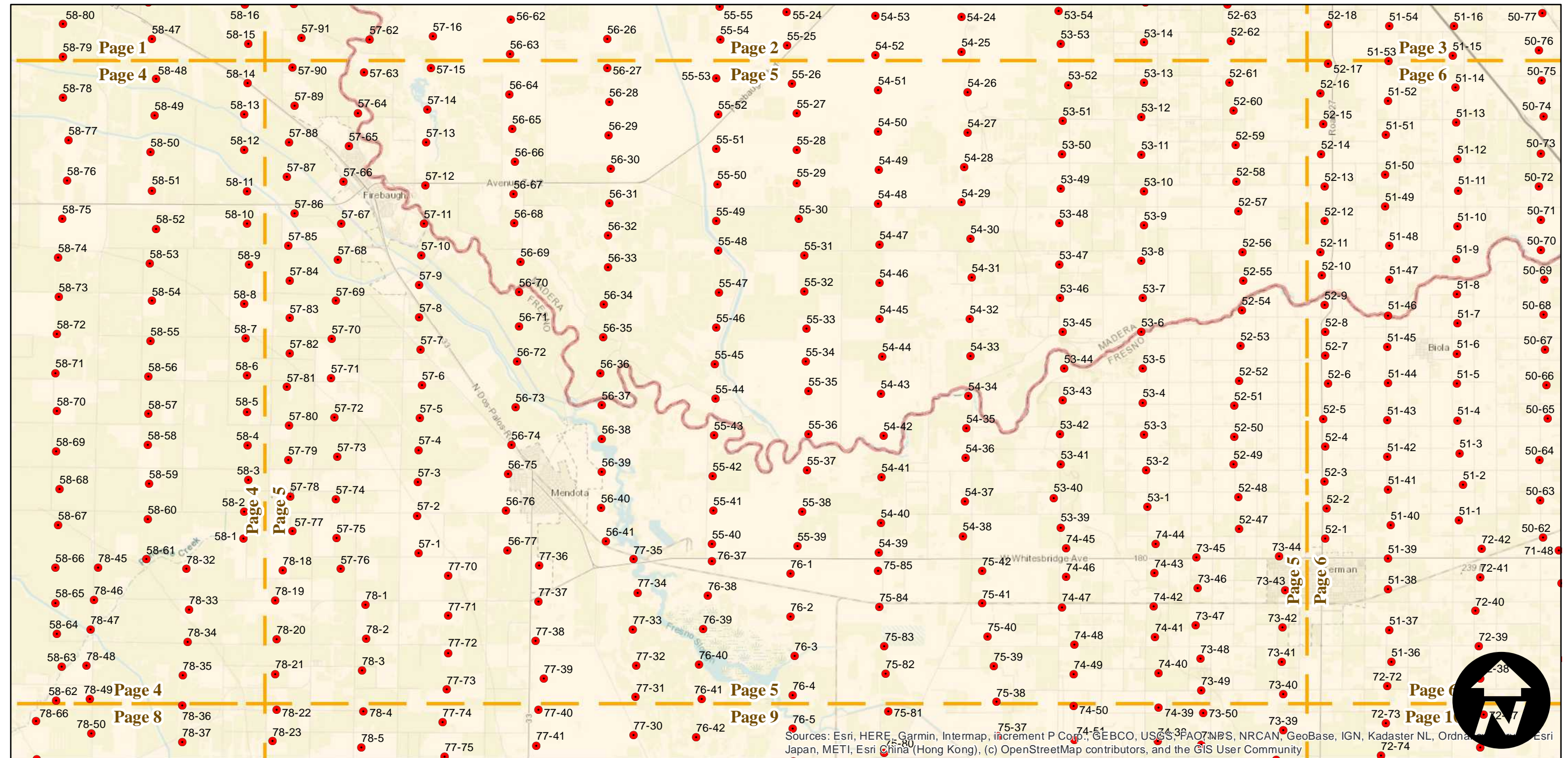
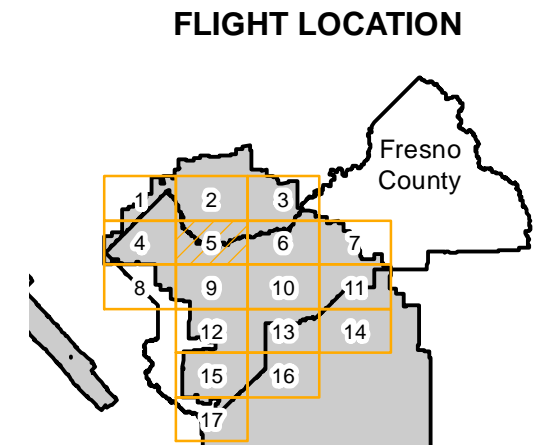
C-4650 (Fresno County)

Counties: Fresno
 Flight date(s): 01-01-1937 to 11-01-1937
 Scale: 1: 20,000
 Overlap: 60%

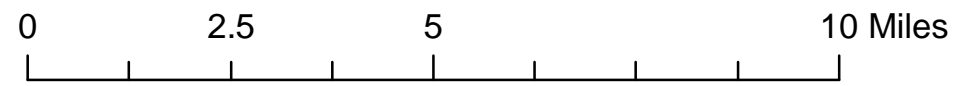
Complete Metadata:
<http://www.library.ucsb.edu/mil/aerial-photography-tools>

Note: Flights ABN-1937 and ABG-1937 were flown as part of C-4650; Prints for these flights were integrated into C-4650. Imagery acquired from Teledyne 1986 and Whittier College, January 2013.

- MIL owns frame
- MIL does not own frame



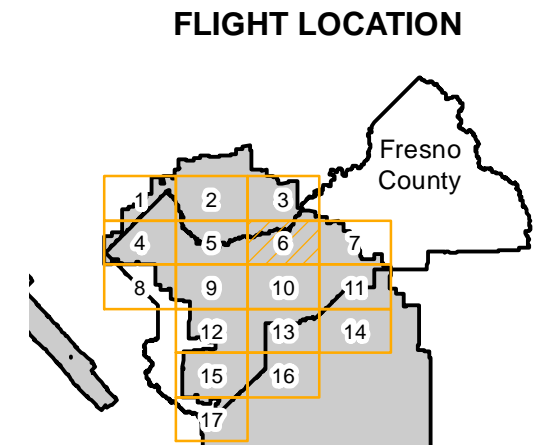
Sources: Esri, HERE, Garmin, Intermap, increment P Corp., GEBCO, USGS, FAO, NPS, NRCAN, GeoBase, IGN, Kadaster NL, Ordnance Survey, Esri Japan, METI, Esri China (Hong Kong), (c) OpenStreetMap contributors, and the GIS User Community



C-4650 (Fresno County)

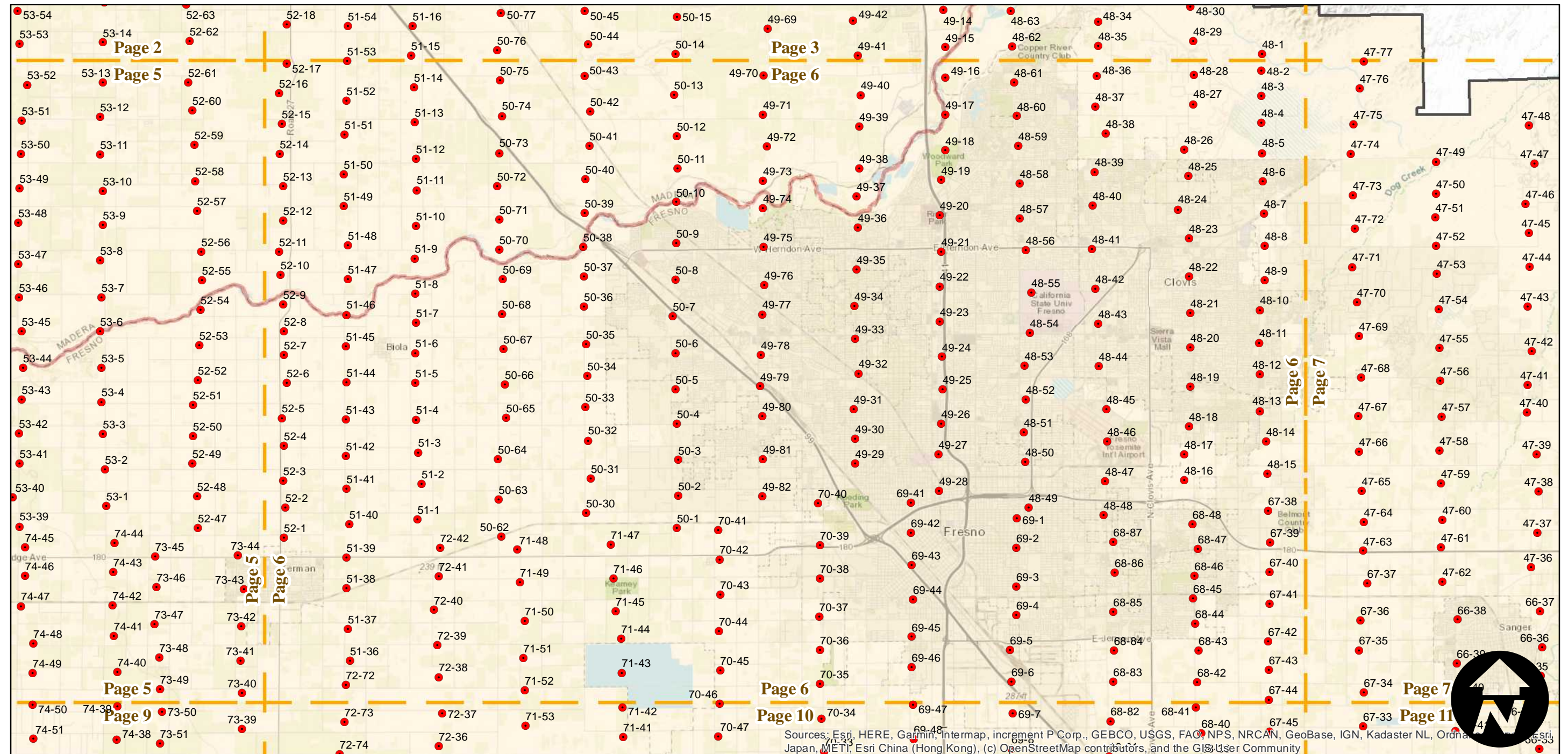
Counties: Fresno
 Flight date(s): 01-01-1937 to 11-01-1937
 Scale: 1: 20,000
 Overlap: 60%

Note: Flights ABN-1937 and ABG-1937 were flown as part of C-4650; Prints for these flights were integrated into C-4650. Imagery acquired from Teledyne 1986 and Whittier College, January 2013.

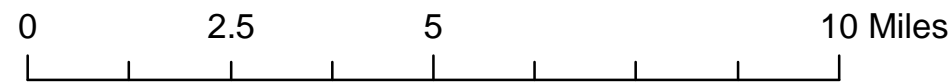


Complete Metadata:
<http://www.library.ucsb.edu/mil/aerial-photography-tools>

- MIL owns frame
- MIL does not own frame



Sources: Esri, HERE, Garmin, Intermap, increment P Corp., GEBCO, USGS, FAO, NPS, NRCAN, GeoBase, IGN, Kadaster NL, Ordnance Survey, Esri, METI, Esri China (Hong Kong), (c) OpenStreetMap contributors, and the GIS User Community



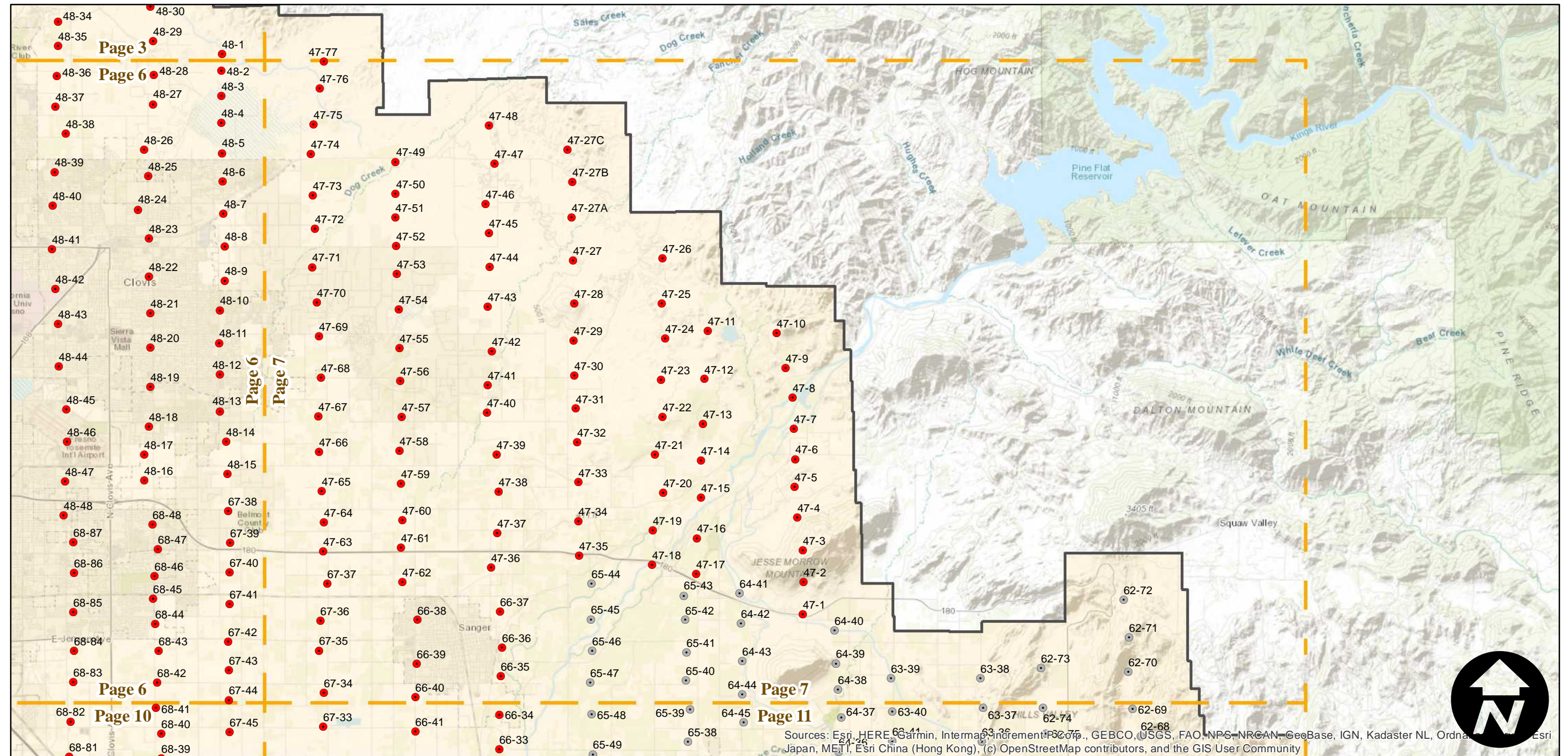
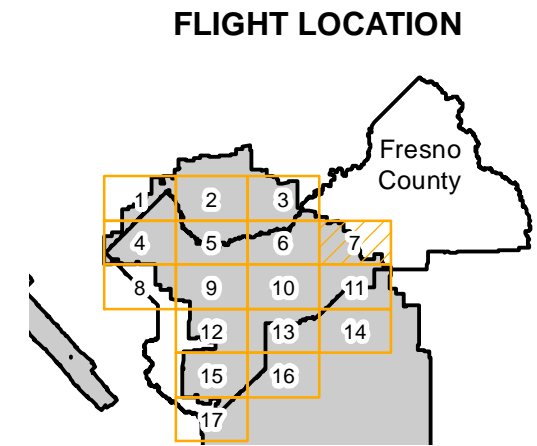
C-4650 (Fresno County)

Counties: Fresno
 Flight date(s): 01-01-1937 to 11-01-1937
 Scale: 1: 20,000
 Overlap: 60%

Complete Metadata:
<http://www.library.ucsb.edu/mil/aerial-photography-tools>

Note: Flights ABN-1937 and ABG-1937 were flown as part of C-4650; Prints for these flights were integrated into C-4650. Imagery acquired from Teledyne 1986 and Whittier College, January 2013.

- MIL owns frame
- MIL does not own frame



Sources: Esri, HERE, Garmin, Intermap, increment P Corp., GEBCO, USGS, FAO, NPS, NRCAN, GeoBase, IGN, Kadaster NL, Ordnance Survey, Esri Japan, METI, Esri China (Hong Kong), (c) OpenStreetMap contributors, and the GIS User Community

0 2.5 5 10 Miles

Index to Aerial Photography
 Page 7 of 17

Scale of this index: 1:150,000

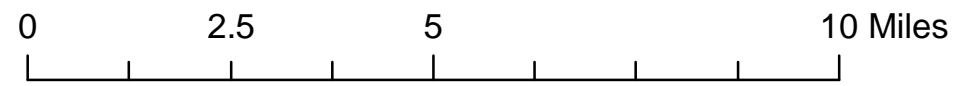
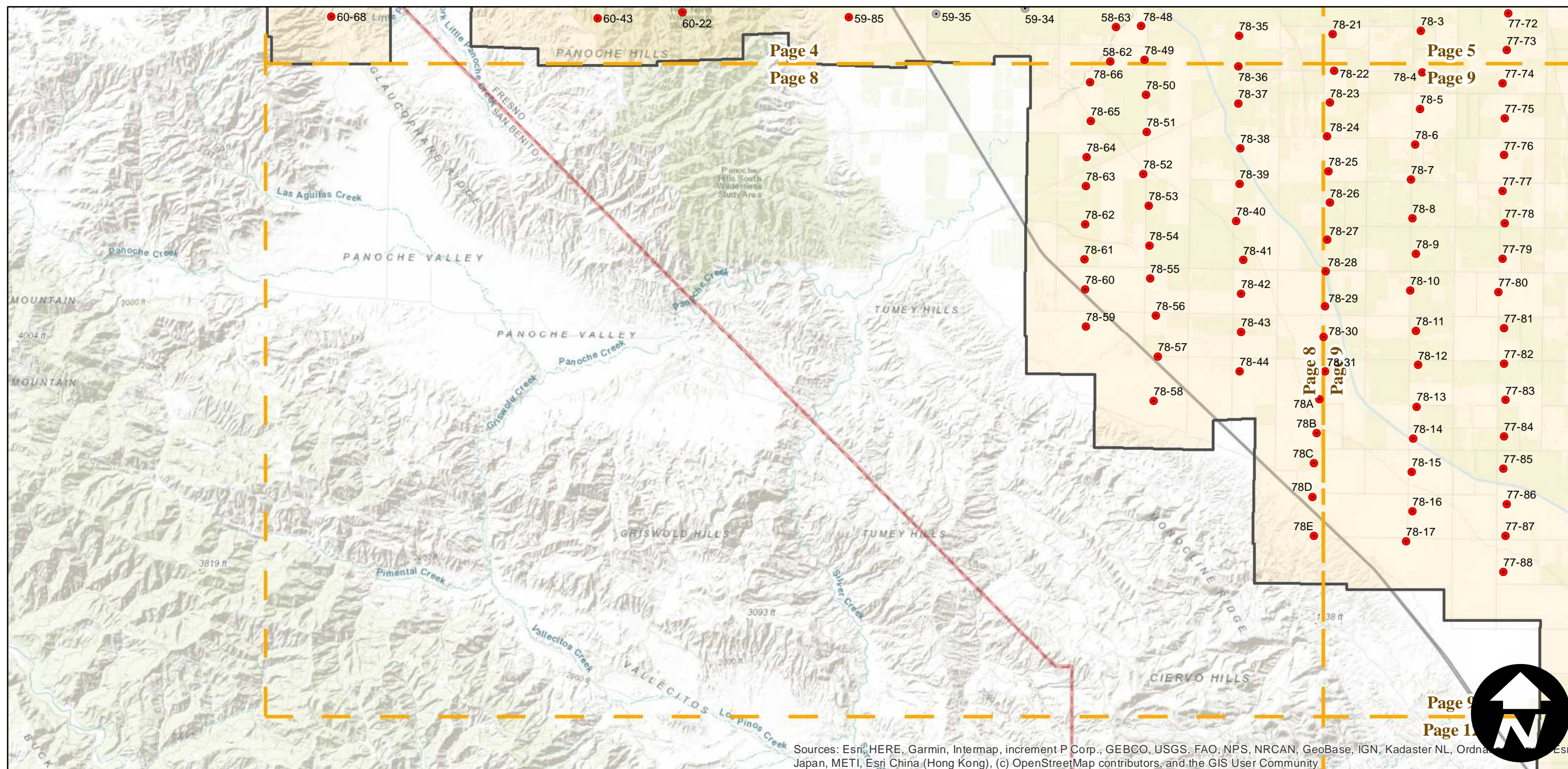
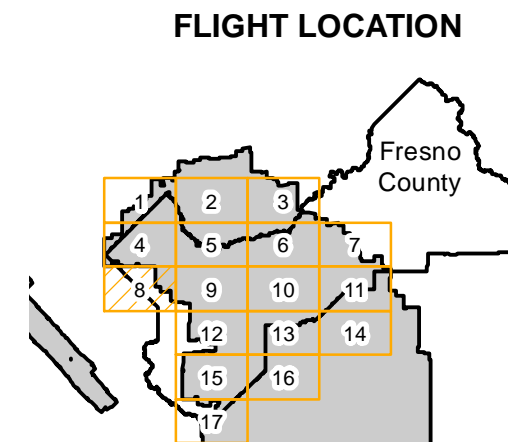
C-4650 (Fresno County)

Counties: Fresno
 Flight date(s): 01-01-1937 to 11-01-1937
 Scale: 1: 20,000
 Overlap: 60%

Complete Metadata:
<http://www.library.ucsb.edu/mil/aerial-photography-tools>

Note: Flights ABN-1937 and ABG-1937 were flown as part of C-4650; Prints for these flights were integrated into C-4650. Imagery acquired from Teledyne 1986 and Whittier College, January 2013.

- MIL owns frame
- MIL does not own frame



Sources: Esri, HERE, Garmin, Intermap, increment P Corp., GEBCO, USGS, FAO, NPS, NRCAN, GeoBase, IGN, Kadaster NL, Ordnance Survey, Esri Japan, METI, Esri China (Hong Kong), (c) OpenStreetMap contributors, and the GIS User Community

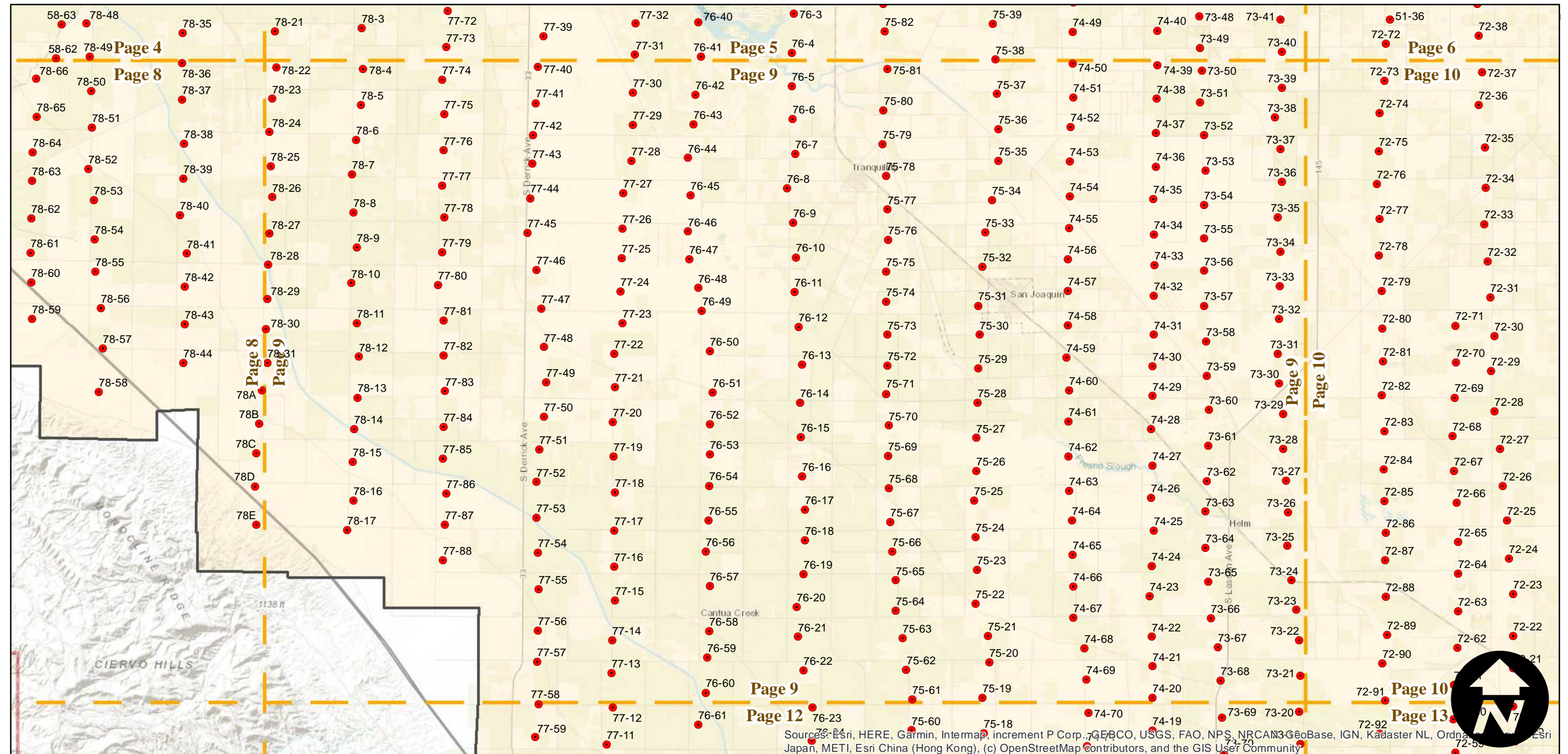
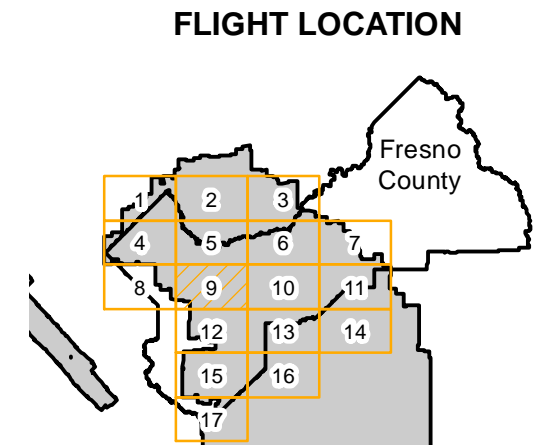
C-4650 (Fresno County)

Counties: Fresno
 Flight date(s): 01-01-1937 to 11-01-1937
 Scale: 1: 20,000
 Overlap: 60%

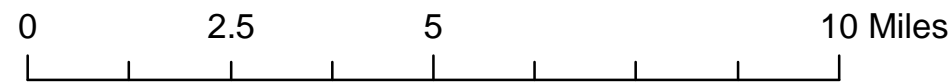
Complete Metadata:
<http://www.library.ucsb.edu/mil/aerial-photography-tools>

Note: Flights ABN-1937 and ABG-1937 were flown as part of C-4650; Prints for these flights were integrated into C-4650. Imagery acquired from Teledyne 1986 and Whittier College, January 2013.

- MIL owns frame
- MIL does not own frame



Sources: Esri, HERE, Garmin, Intermap, increment P Corp., GEBCO, USGS, FAO, NPS, NRCAN, GeoBase, IGN, Kadaster NL, Ordnance Survey, Esri Japan, METI, Esri China (Hong Kong), (c) OpenStreetMap contributors, and the GIS User Community



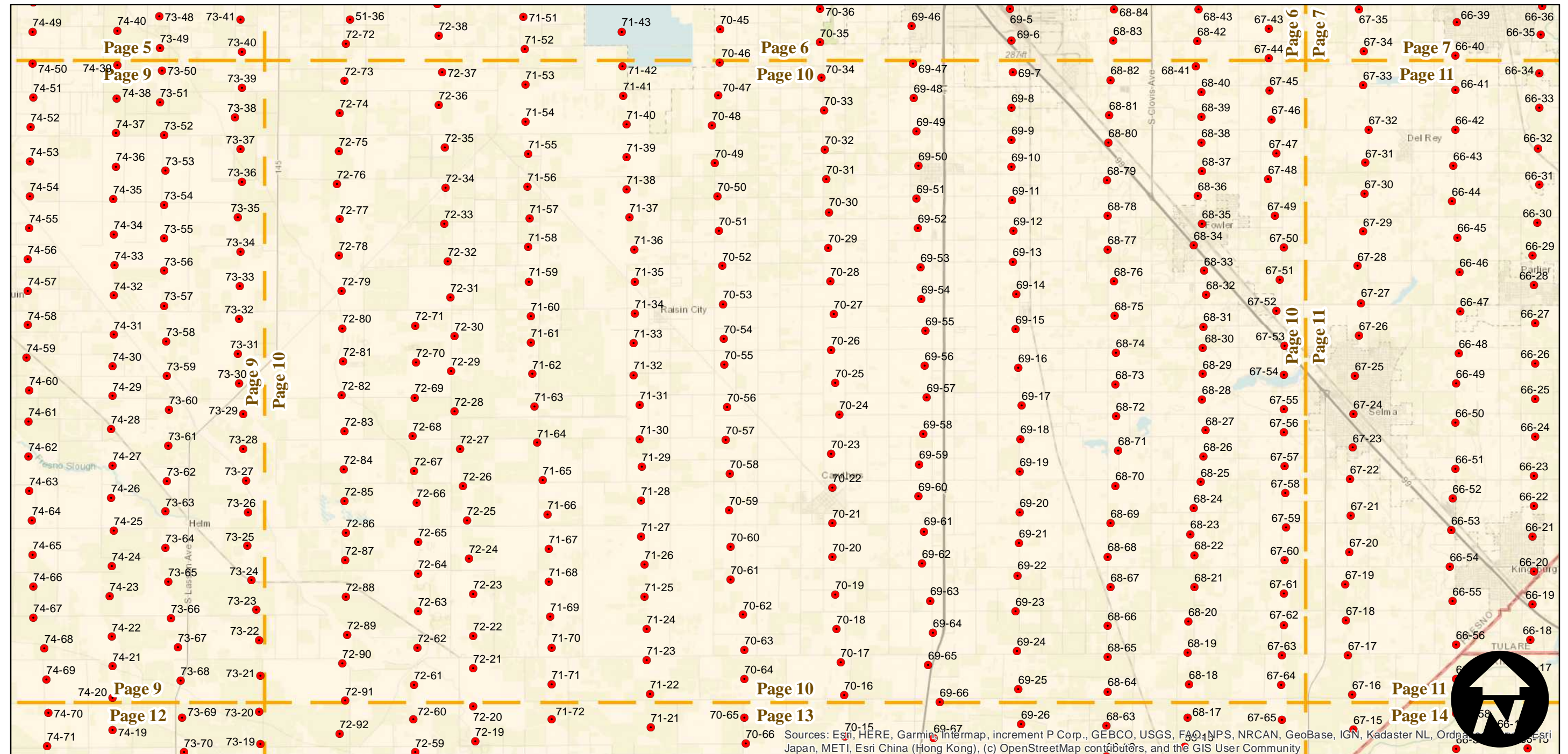
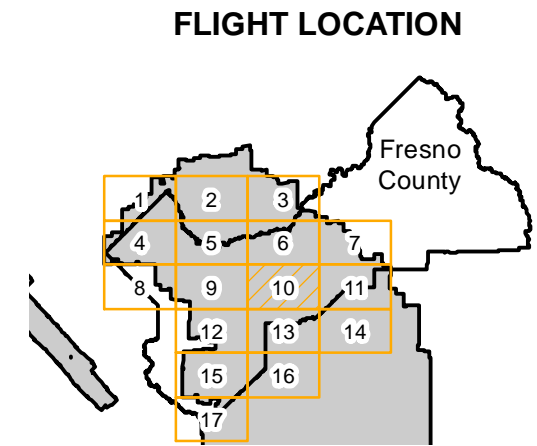
C-4650 (Fresno County)

Counties: Fresno
 Flight date(s): 01-01-1937 to 11-01-1937
 Scale: 1: 20,000
 Overlap: 60%

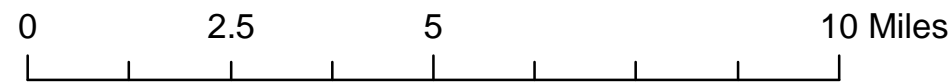
Complete Metadata:
<http://www.library.ucsb.edu/mil/aerial-photography-tools>

Note: Flights ABN-1937 and ABG-1937 were flown as part of C-4650; Prints for these flights were integrated into C-4650. Imagery acquired from Teledyne 1986 and Whittier College, January 2013.

- MIL owns frame
- MIL does not own frame



Sources: Esri, HERE, Garmin, Intermap, increment P Corp., GEBCO, USGS, FAO, NPS, NRCAN, GeoBase, IGN, Kadaster NL, Ordnance Survey, Esri Japan, METI, Esri China (Hong Kong), (c) OpenStreetMap contributors, and the GIS User Community



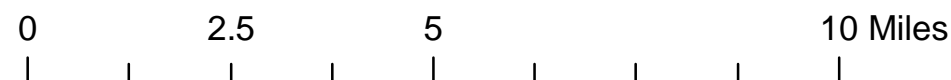
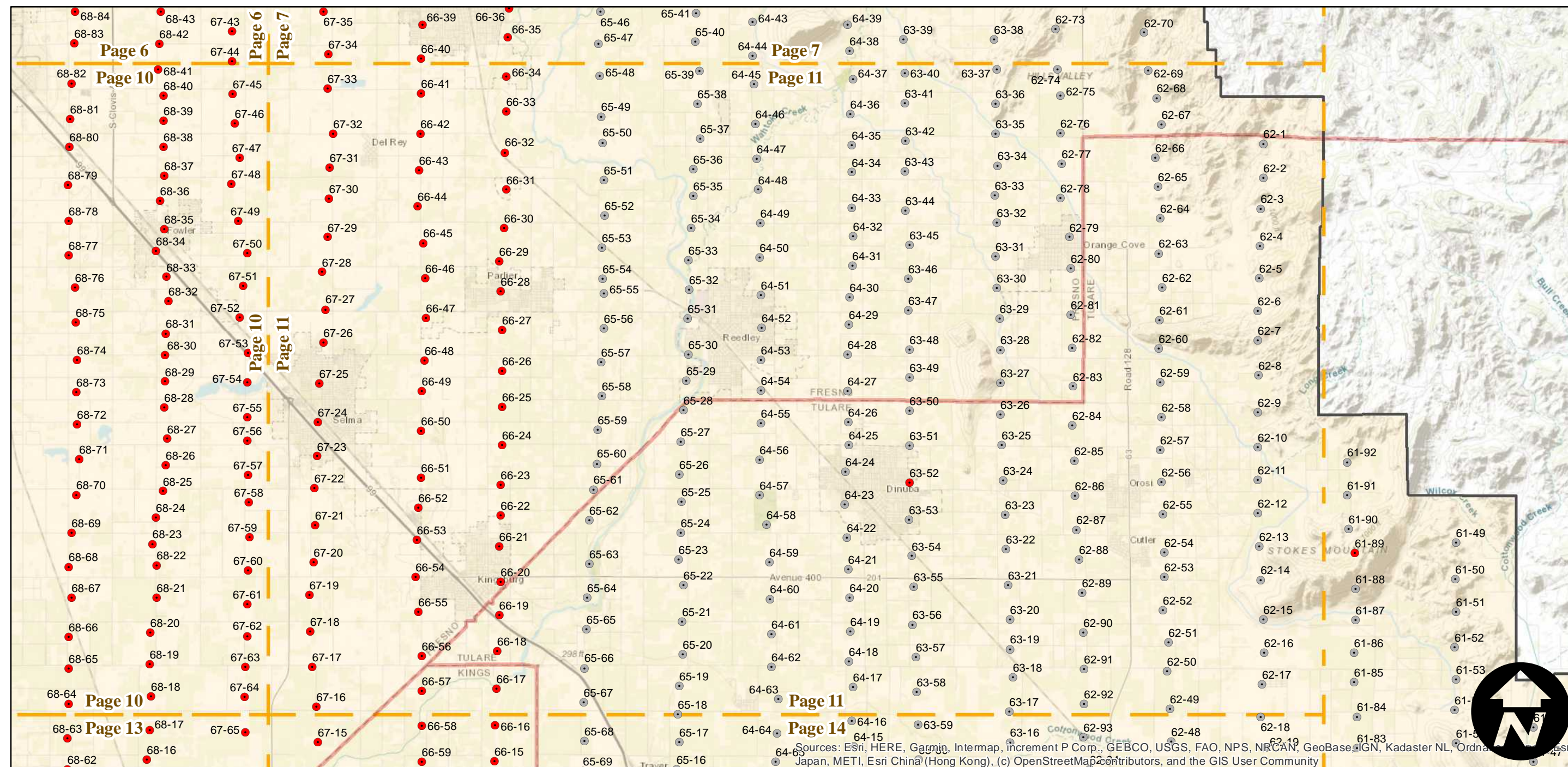
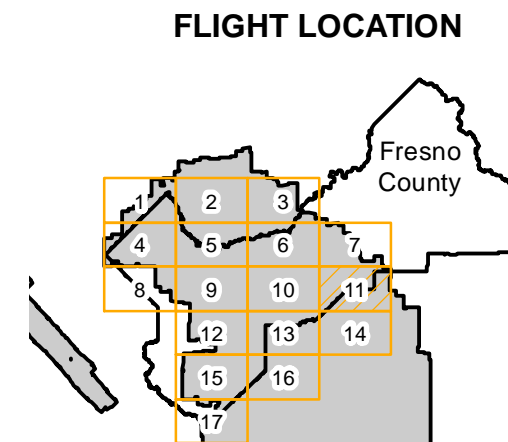
C-4650 (Fresno County)

Counties: Fresno
 Flight date(s): 01-01-1937 to 11-01-1937
 Scale: 1: 20,000
 Overlap: 60%

Complete Metadata:
<http://www.library.ucsb.edu/mil/aerial-photography-tools>

Note: Flights ABN-1937 and ABG-1937 were flown as part of C-4650; Prints for these flights were integrated into C-4650. Imagery acquired from Teledyne 1986 and Whittier College, January 2013.

- MIL owns frame
- MIL does not own frame



Sources: Esri, HERE, Garmin, Intermap, Increment P Corp., GEBCO, USGS, FAO, NPS, NRCAN, GeoBase, IGN, Kadaster NL, Ordnance Survey, Esri Japan, METI, Esri China (Hong Kong), (c) OpenStreetMap contributors, and the GIS User Community

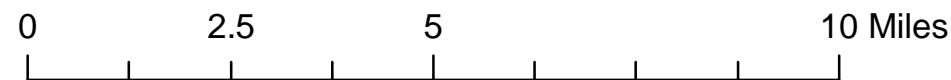
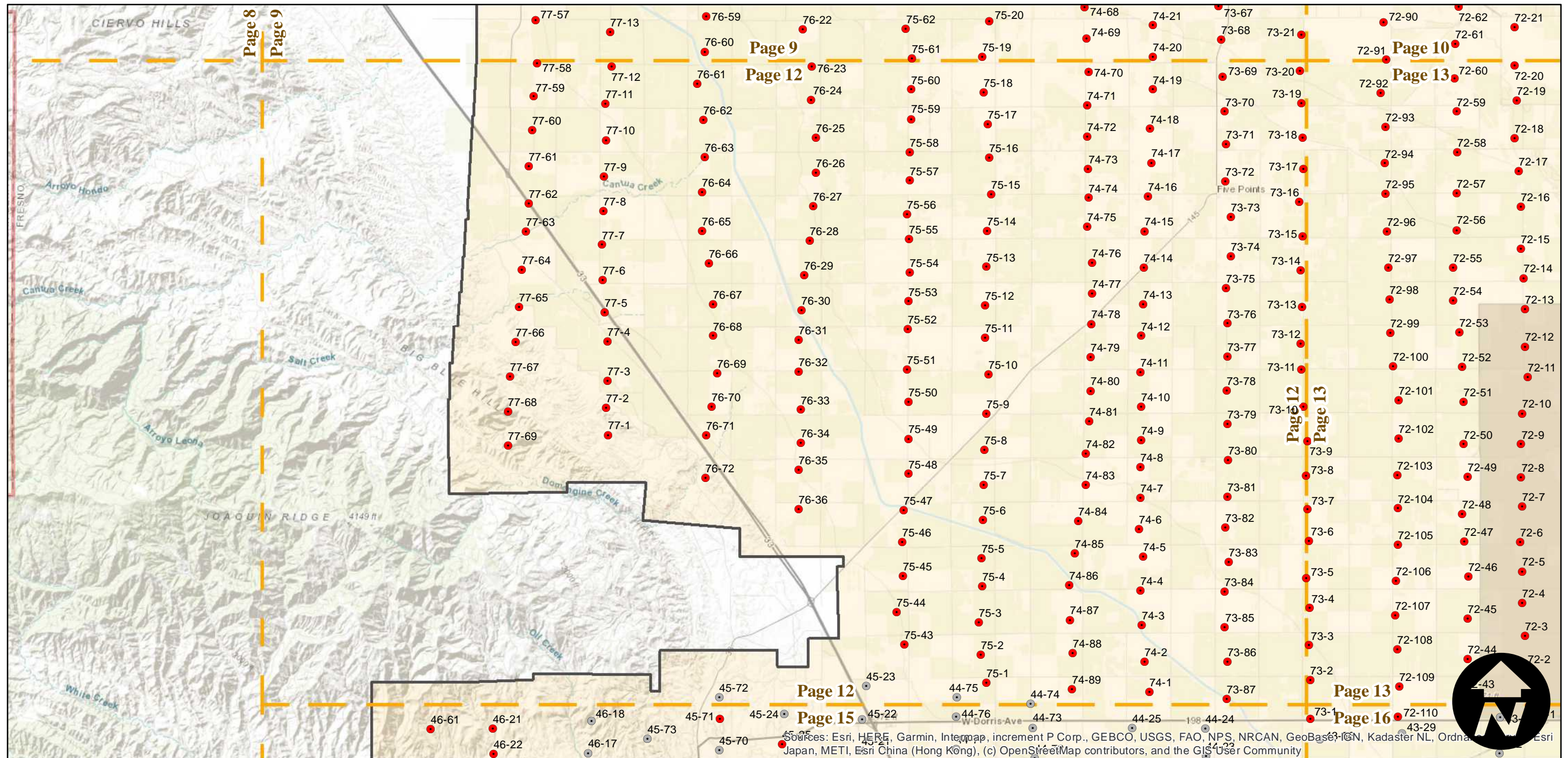
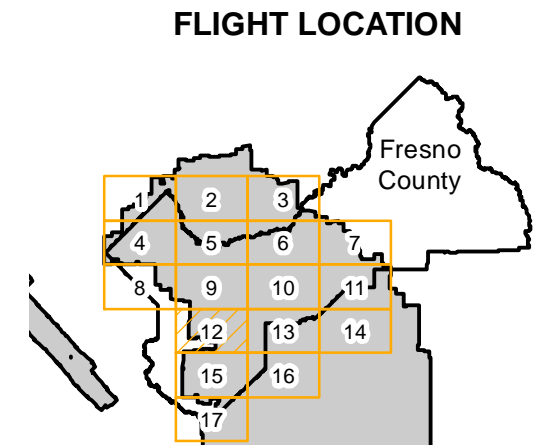
C-4650 (Fresno County)

Counties: Fresno
 Flight date(s): 01-01-1937 to 11-01-1937
 Scale: 1: 20,000
 Overlap: 60%

Complete Metadata:
<http://www.library.ucsb.edu/mil/aerial-photography-tools>

Note: Flights ABN-1937 and ABG-1937 were flown as part of C-4650; Prints for these flights were integrated into C-4650. Imagery acquired from Teledyne 1986 and Whittier College, January 2013.

- MIL owns frame
- MIL does not own frame



Sources: Esri, HERE, Garmin, Intermap, increment P Corp., GEBCO, USGS, FAO, NPS, NRCAN, GeoBase, IGN, Kadaster NL, Ordnance Survey, Esri Japan, METI, Esri China (Hong Kong), (c) OpenStreetMap contributors, and the GIS User Community



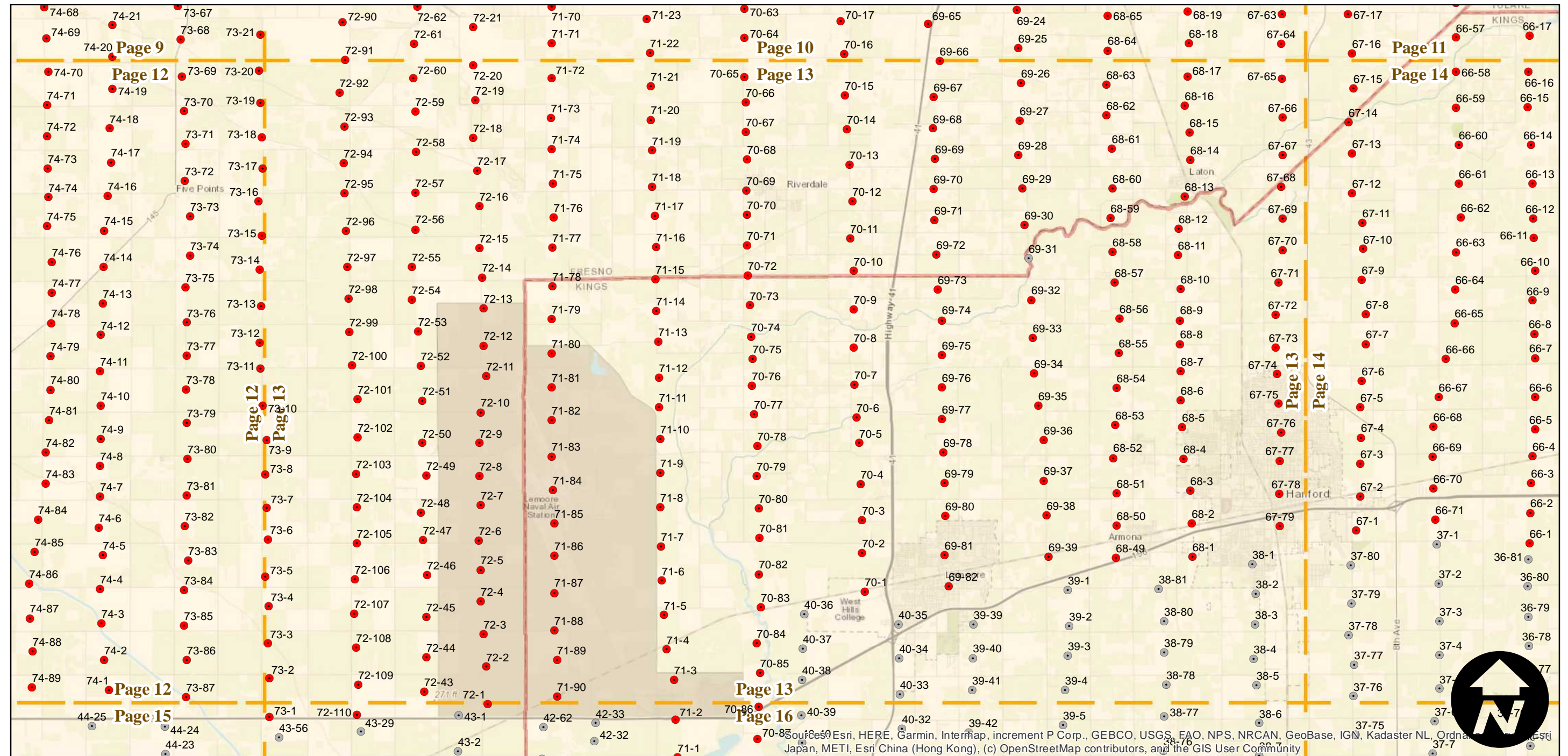
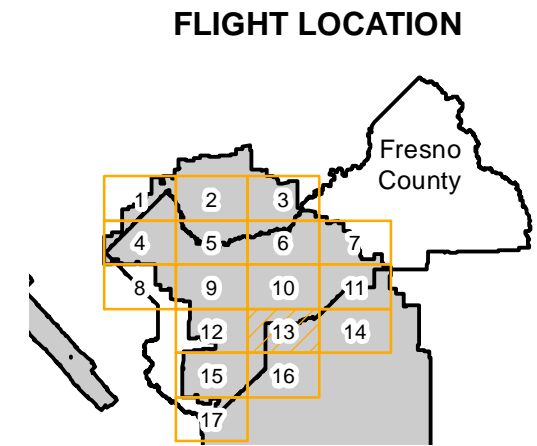
C-4650 (Fresno County)

Counties: Fresno
 Flight date(s): 01-01-1937 to 11-01-1937
 Scale: 1: 20,000
 Overlap: 60%

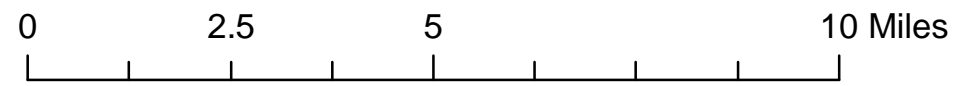
Complete Metadata:
<http://www.library.ucsb.edu/mil/aerial-photography-tools>

Note: Flights ABN-1937 and ABG-1937 were flown as part of C-4650; Prints for these flights were integrated into C-4650. Imagery acquired from Teledyne 1986 and Whittier College, January 2013.

- MIL owns frame
- MIL does not own frame



Source: Esri, HERE, Garmin, Intermap, increment P Corp., GEBCO, USGS, FAO, NPS, NRCAN, GeoBase, IGN, Kadaster NL, Ordnance Survey, Esri Japan, METI, Esri China (Hong Kong), (c) OpenStreetMap contributors, and the GIS User Community



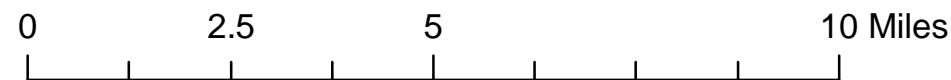
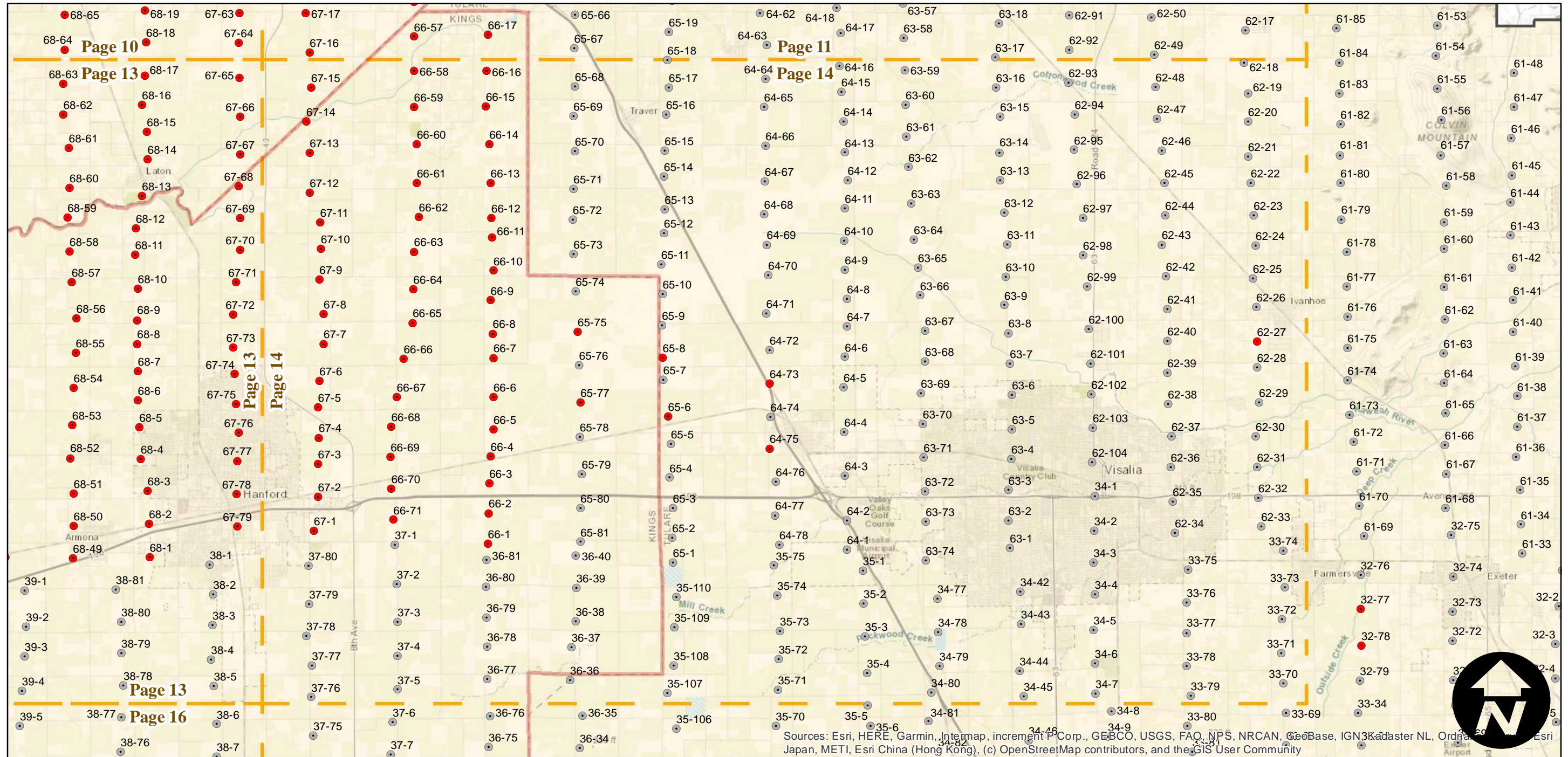
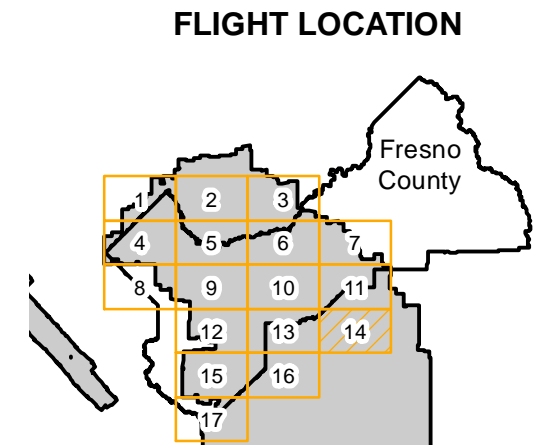
C-4650 (Fresno County)

Counties: Fresno
 Flight date(s): 01-01-1937 to 11-01-1937
 Scale: 1: 20,000
 Overlap: 60%

Complete Metadata:
<http://www.library.ucsb.edu/mil/aerial-photography-tools>

Note: Flights ABN-1937 and ABG-1937 were flown as part of C-4650; Prints for these flights were integrated into C-4650. Imagery acquired from Teledyne 1986 and Whittier College, January 2013.

- MIL owns frame
- MIL does not own frame



Sources: Esri, HERE, Garmin, Intermap, increment P Corp., GEBCO, USGS, FAO, NPS, NRCAN, GeoBase, IGN, Kadaster NL, Ordnance Survey, Esri Japan, METI, Esri China (Hong Kong), (c) OpenStreetMap contributors, and the GIS User Community



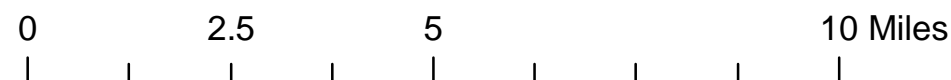
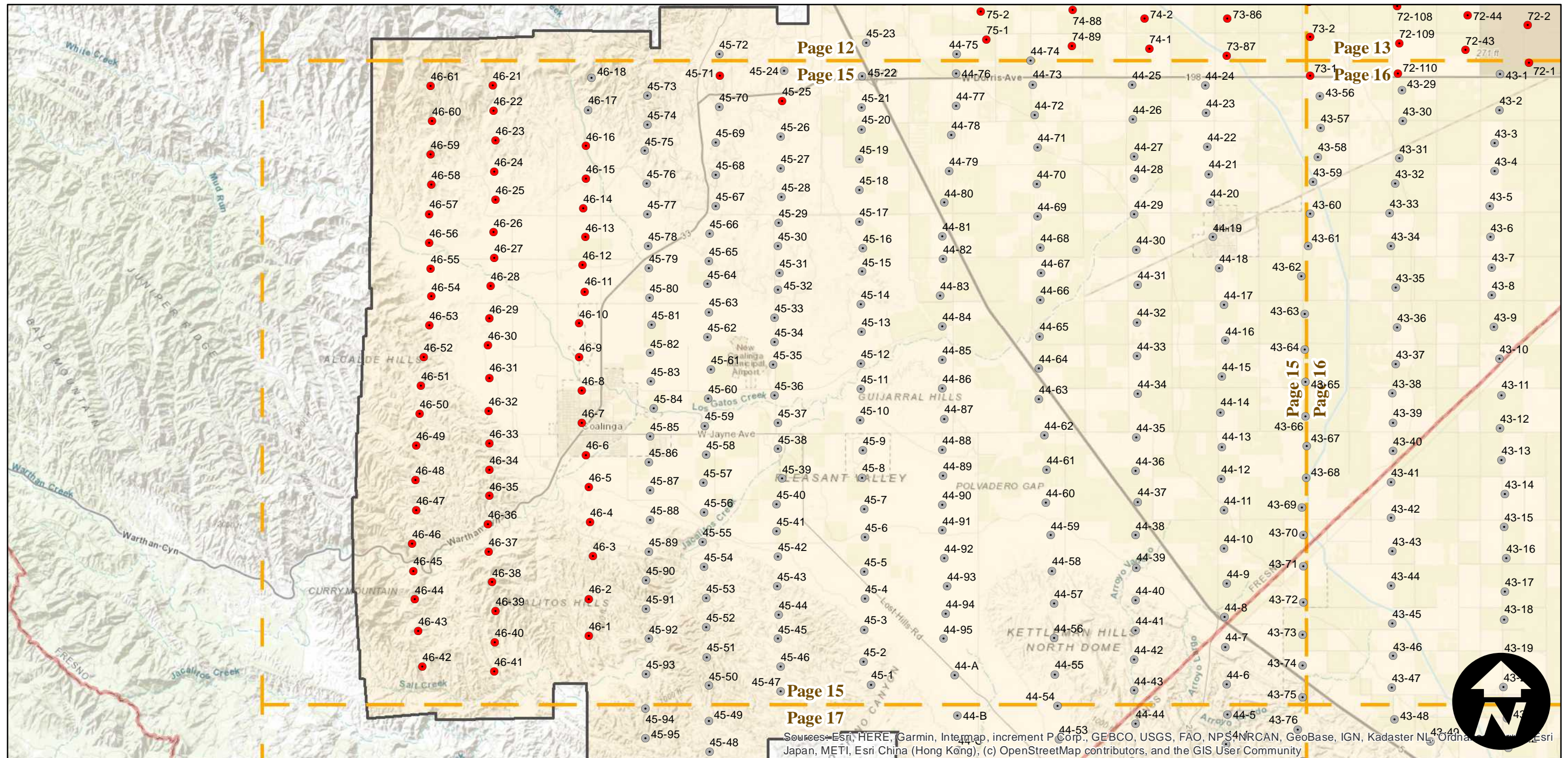
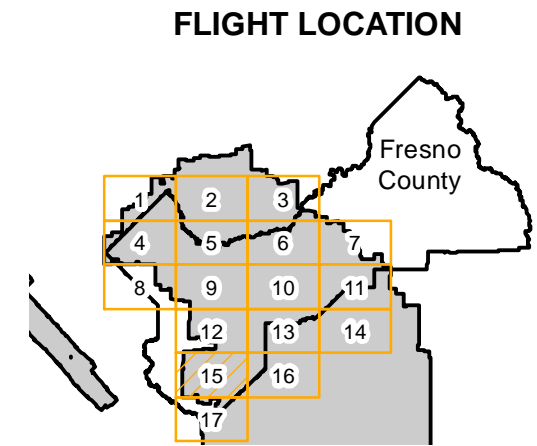
C-4650 (Fresno County)

Counties: Fresno
 Flight date(s): 01-01-1937 to 11-01-1937
 Scale: 1: 20,000
 Overlap: 60%

Complete Metadata:
<http://www.library.ucsb.edu/mil/aerial-photography-tools>

Note: Flights ABN-1937 and ABG-1937 were flown as part of C-4650; Prints for these flights were integrated into C-4650. Imagery acquired from Teledyne 1986 and Whittier College, January 2013.

- MIL owns frame
- MIL does not own frame



Sources: Esri, HERE, Garmin, Intermap, increment P Corp., GEBCO, USGS, FAO, NPS, NRCAN, GeoBase, IGN, Kadaster NL, Ordnance Survey, Esri Japan, METI, Esri China (Hong Kong), (c) OpenStreetMap contributors, and the GIS User Community



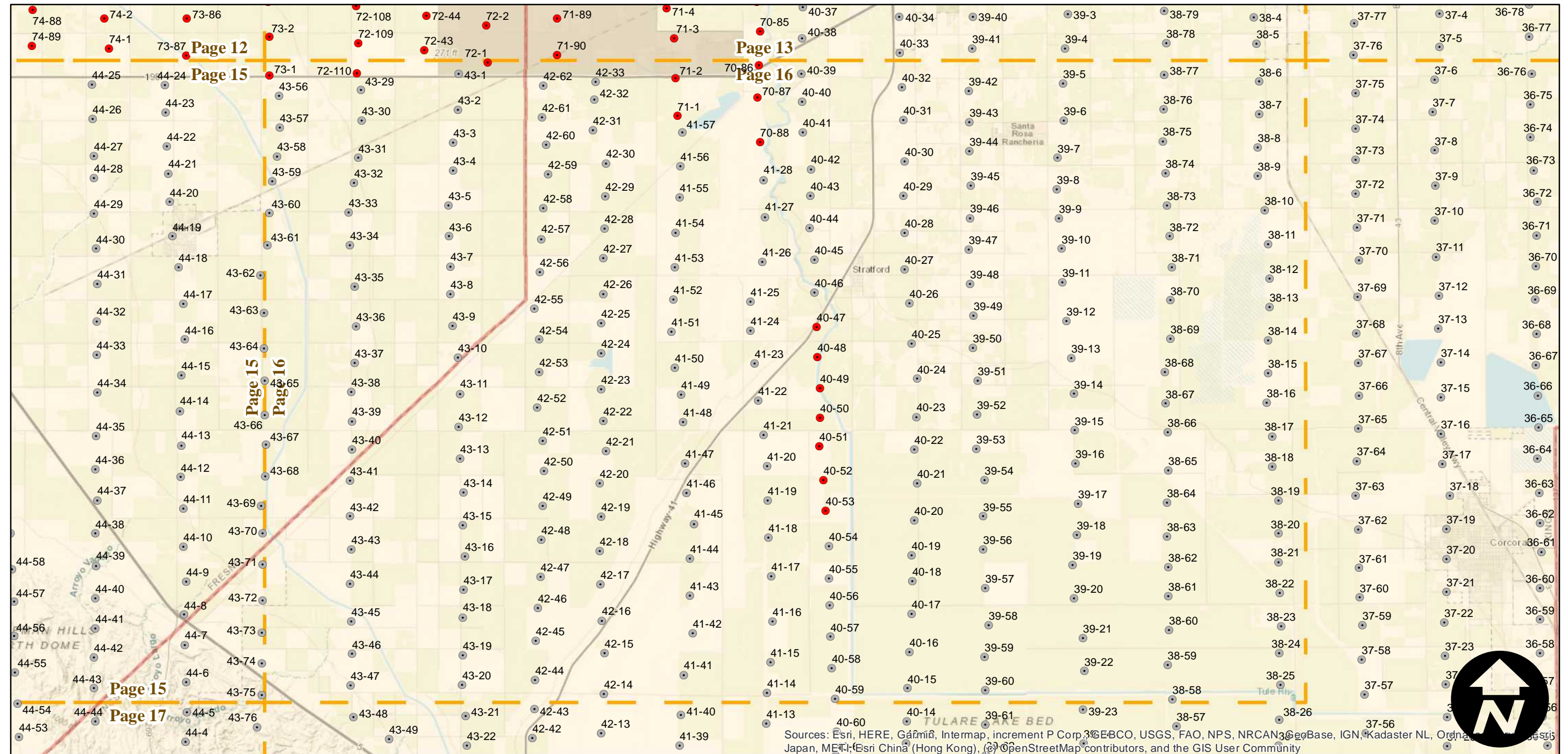
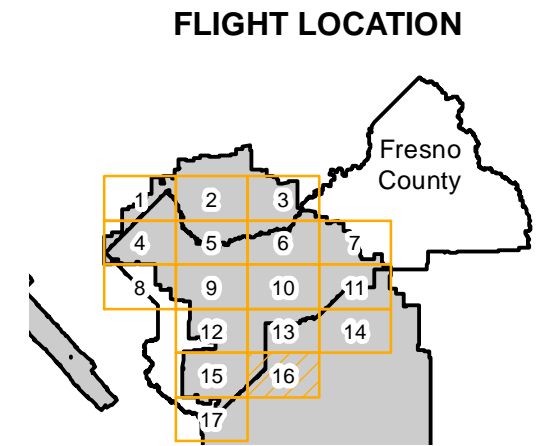
C-4650 (Fresno County)

Counties: Fresno
 Flight date(s): 01-01-1937 to 11-01-1937
 Scale: 1: 20,000
 Overlap: 60%

Complete Metadata:
<http://www.library.ucsb.edu/mil/aerial-photography-tools>

Note: Flights ABN-1937 and ABG-1937 were flown as part of C-4650; Prints for these flights were integrated into C-4650. Imagery acquired from Teledyne 1986 and Whittier College, January 2013.

- MIL owns frame
- MIL does not own frame



Sources: Esri, HERE, Garmin, Intermap, increment P Corp., GEBCO, USGS, FAO, NPS, NRCAN, GeoBase, IGN, Kadaster NL, Ordnance Survey, Esri China (Hong Kong), Swisstopo, Mapbox, OpenStreetMap contributors, and the GIS User Community



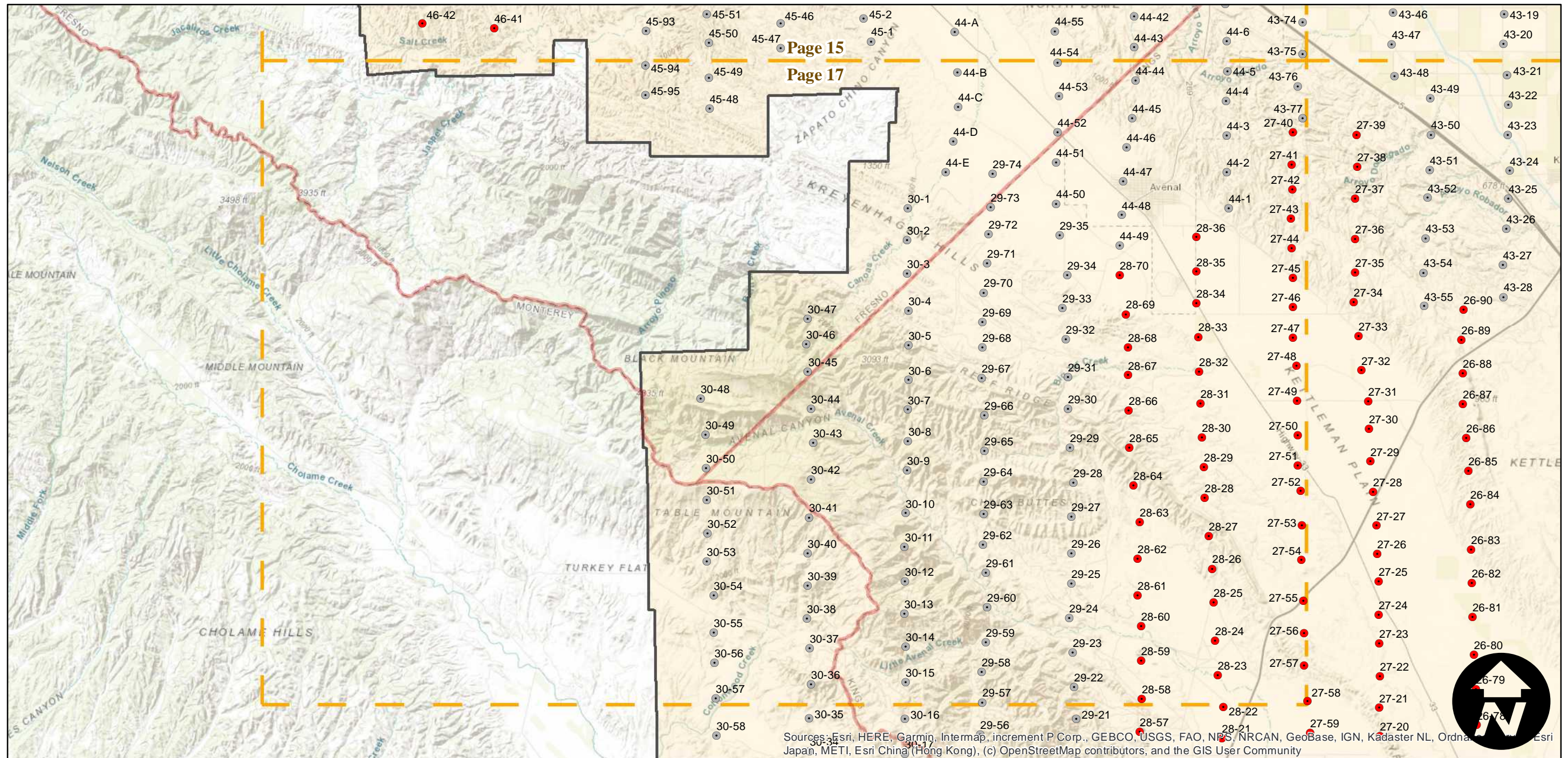
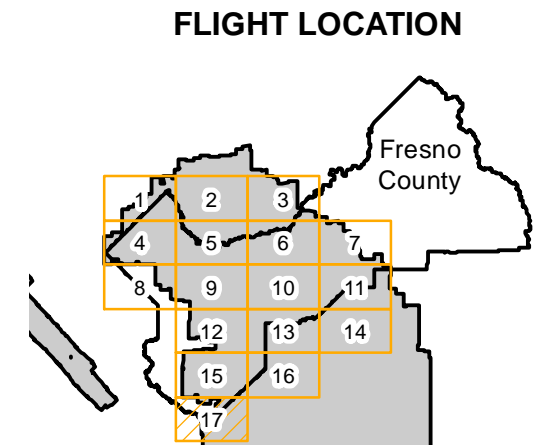
C-4650 (Fresno County)

Counties: Fresno
 Flight date(s): 01-01-1937 to 11-01-1937
 Scale: 1: 20,000
 Overlap: 60%

Complete Metadata:
<http://www.library.ucsb.edu/mil/aerial-photography-tools>

Note: Flights ABN-1937 and ABG-1937 were flown as part of C-4650; Prints for these flights were integrated into C-4650. Imagery acquired from Teledyne 1986 and Whittier College, January 2013.

- MIL owns frame
- MIL does not own frame



Sources: Esri, HERE, Garmin, Intermap, increment P Corp., GEBCO, USGS, FAO, NPS, NRCAN, GeoBase, IGN, Kadaster NL, Ordnance Survey, Esri Japan, METI, Esri China (Hong Kong), (c) OpenStreetMap contributors, and the GIS User Community

0 2.5 5 10 Miles

Index to Aerial Photography
 Page 17 of 17

Scale of this index: 1:150,000