

# C-4648

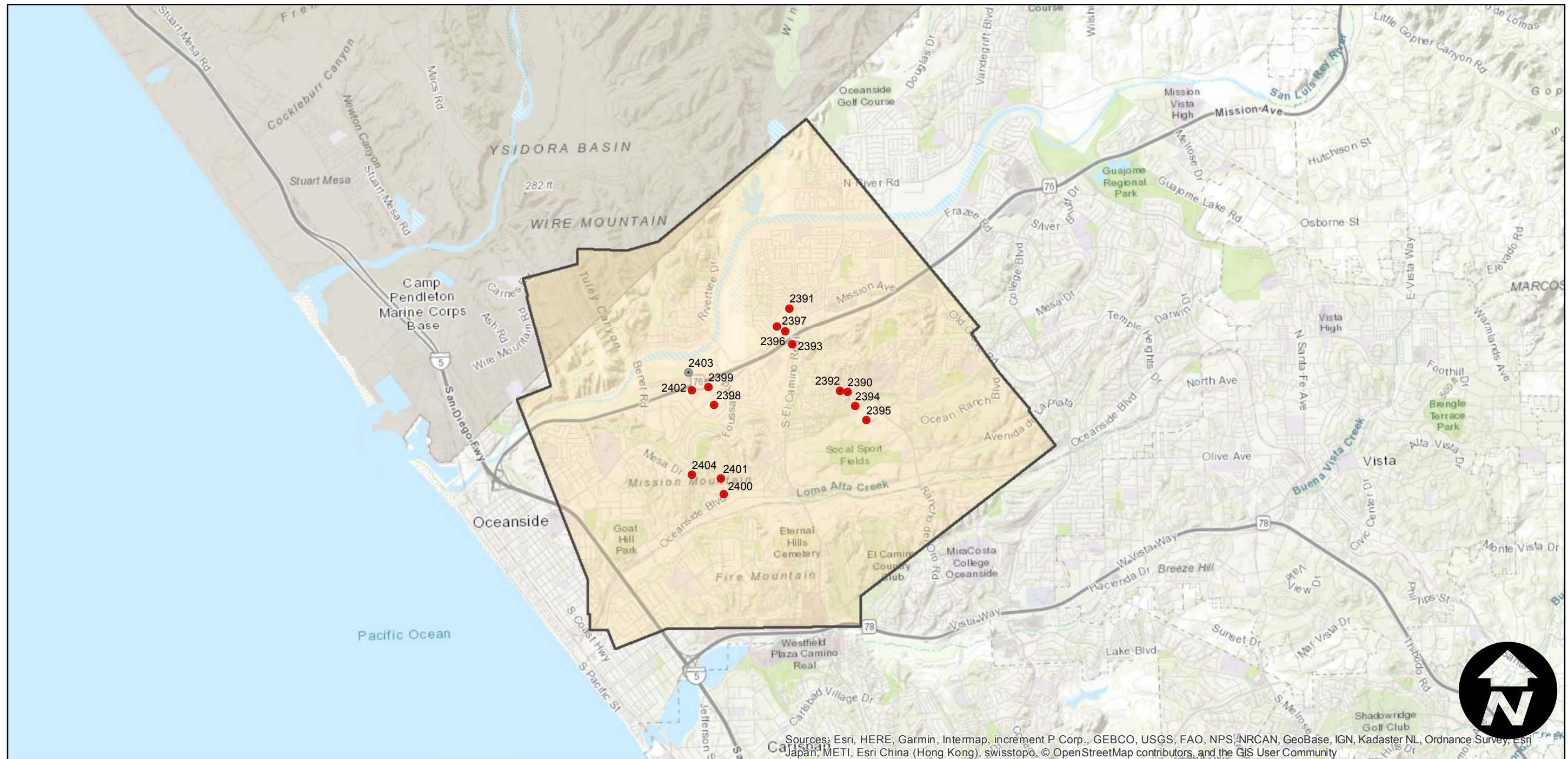
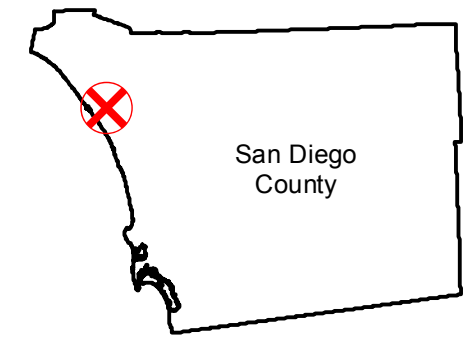
Counties: San Diego  
Flight date(s): 06-24-1937  
Scale: 1:17,400  
Overlap: 60-90%

Complete Metadata:  
<https://www.library.ucsb.edu/src/airphotos/aerial-photography-information>

Note: San Luis Rey to Oceanside. Four-frame composites.  
Prints acquired from Whittier College, January 2013.

- MIL owns frame
- MIL does not own frame

## FLIGHT LOCATION



Sources: Esri, HERE, Garmin, Intermap, increment P Corp., GEBCO, USGS, FAO, NPS, NRCAN, GeoBase, IGN, Kadaster NL, Ordnance Survey, Esri Japan, METI, Esri China (Hong Kong), swisstopo, © OpenStreetMap contributors, and the GIS User Community

0 1 2 4 Miles

Index to Aerial Photography  
Page 1 of 1

Scale of this index: 1:65,000