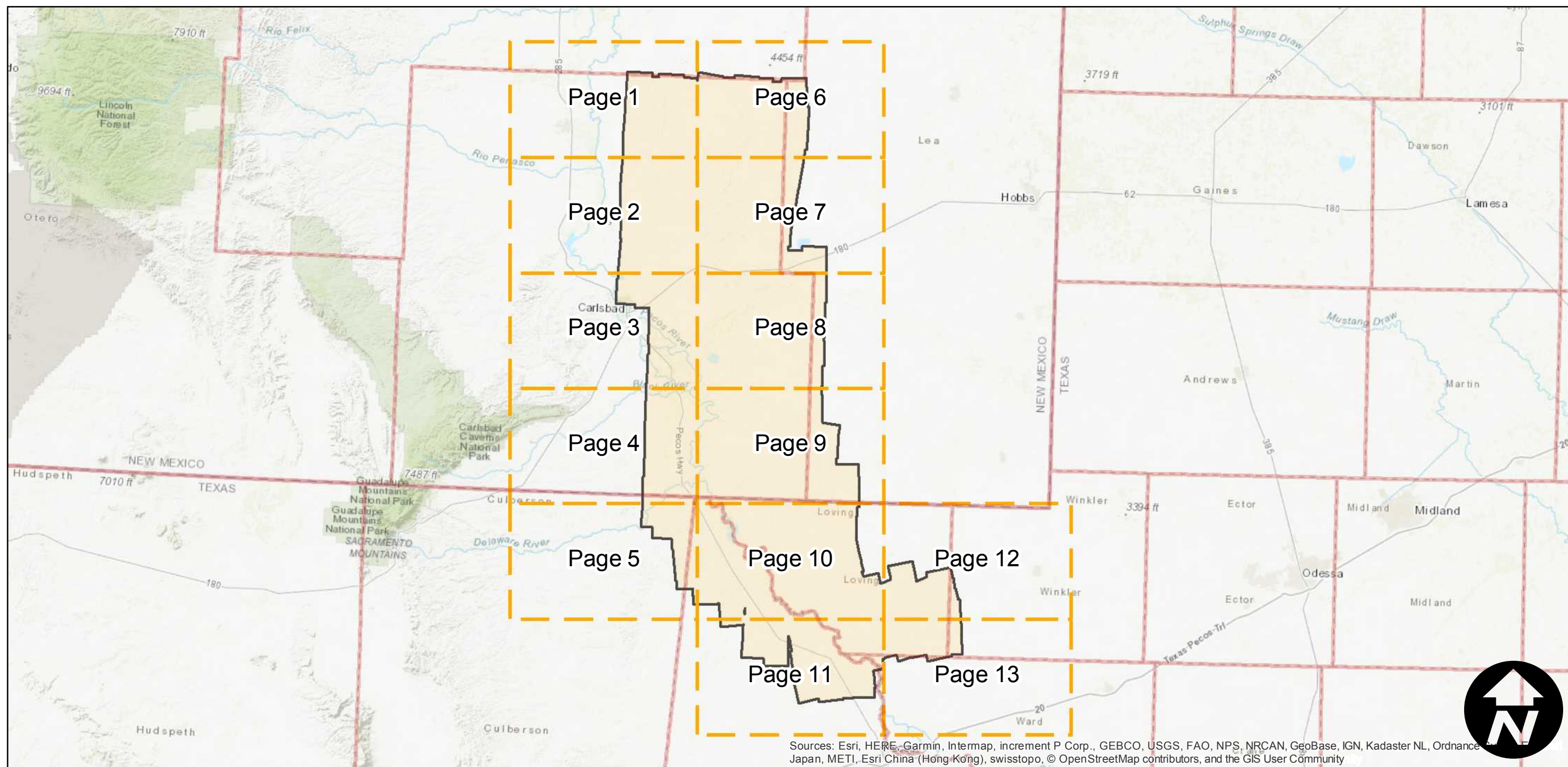
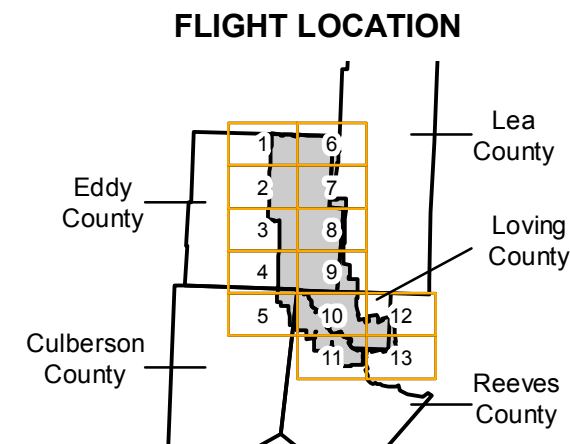


C-4559

Counties: Texas; Culberson, Loving, Reeves. New Mexico; Eddy, Lea.
Flight date(s): 05-01-1937 to 05-31-1937
Scale: 1:31,680
Overlap: 60-80%

Complete Metadata:
<https://www.library.ucsb.edu/src/airphotos/aerial-photography-information>

Note: Eastern Eddy County (New Mexico), southwestern Loving County (Texas), and vicinity. Notable areas covered include Loving, Malaga, Red Bluff Reservoir, Angeles, and Orla. Exact flight date is unknown. Most of photography held in roll film format. Imagery acquired January 2013.



0 15 30 60 Miles

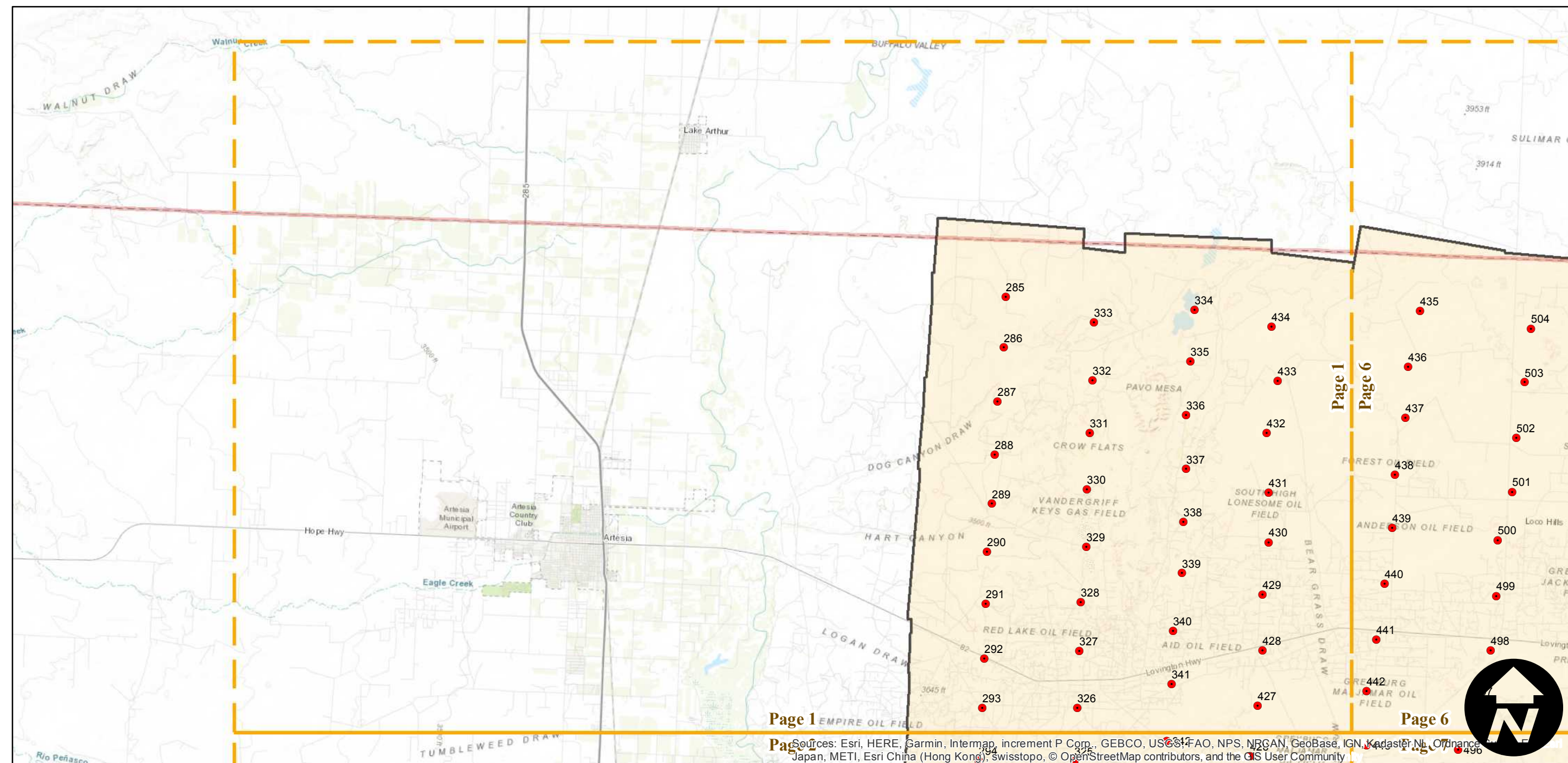
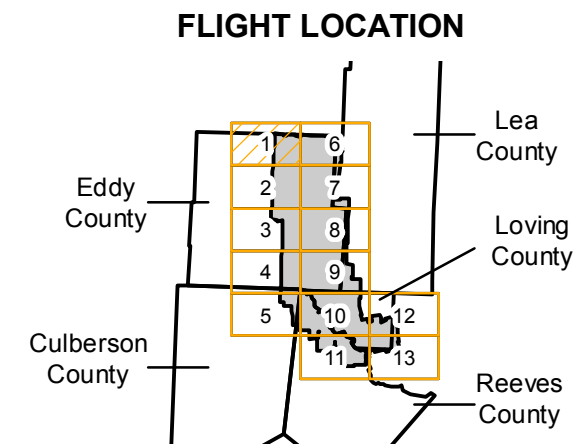
Index to Aerial Photography
Page Key

Scale of this index: 1:1,050,000

C-4559

Counties: Texas; Culberson, Loving, Reeves. New Mexico; Eddy, Lea.
 Flight date(s): 05-01-1937 to 05-31-1937
 Scale: 1:31,680
 Overlap: 60-80%

Note: Eastern Eddy County (New Mexico), southwestern Loving County (Texas), and vicinity. Notable areas covered include Loving, Malaga, Red Bluff Reservoir, Angeles, and Orla. Exact flight date is unknown. Most of photography held in roll film format. Imagery acquired January 2013.



0 3 6 12 Miles

Index to Aerial Photography
 Page 1 of 13

Scale of this index: 1:175,000

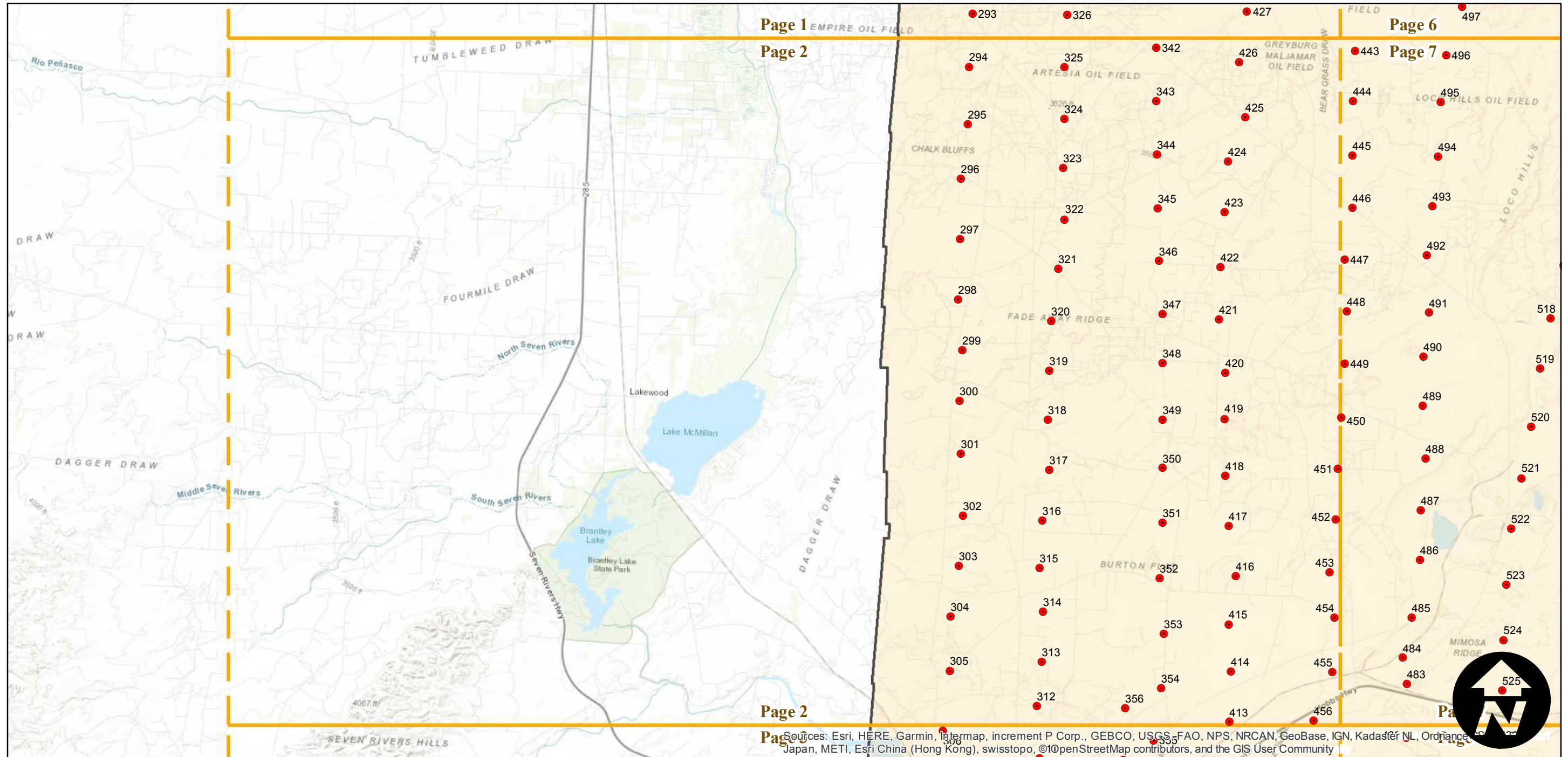
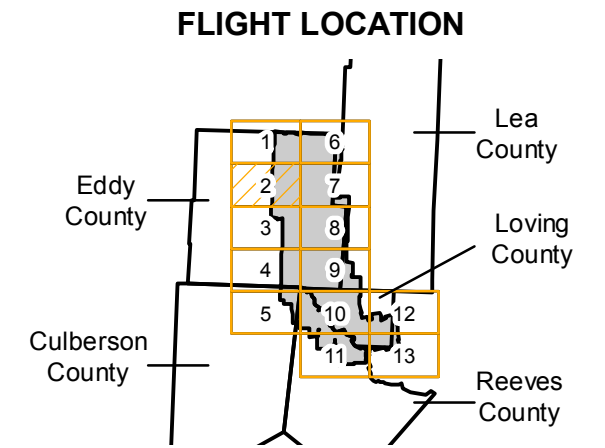
Sources: Esri, HERE, Garmin, Intermap, increment P Corp., GEBCO, USGS, FAO, NPS, NRCAN, GeoBase, IGN, Kadaster NL, Ordnance Survey, Esri Japan, METI, Esri China (Hong Kong), Swisstopo, © OpenStreetMap contributors, and the GIS User Community

C-4559

Counties: Texas; Culberson, Loving, Reeves. New Mexico; Eddy, Lea.
Flight date(s): 05-01-1937 to 05-31-1937
Scale: 1:31,680
Overlap: 60-80%

Complete Metadata:
<https://www.library.ucsb.edu/src/airphotos/aerial-photography-information>

Note: Eastern Eddy County (New Mexico), southwestern Loving County (Texas), and vicinity. Notable areas covered include Loving, Malaga, Red Bluff Reservoir, Angeles, and Orla. Exact flight date is unknown. Most of photography held in roll film format. Imagery acquired January 2013.



0 3 6 12 Miles

Index to Aerial Photography
Page 2 of 13

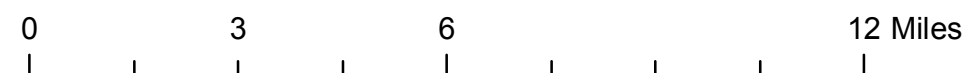
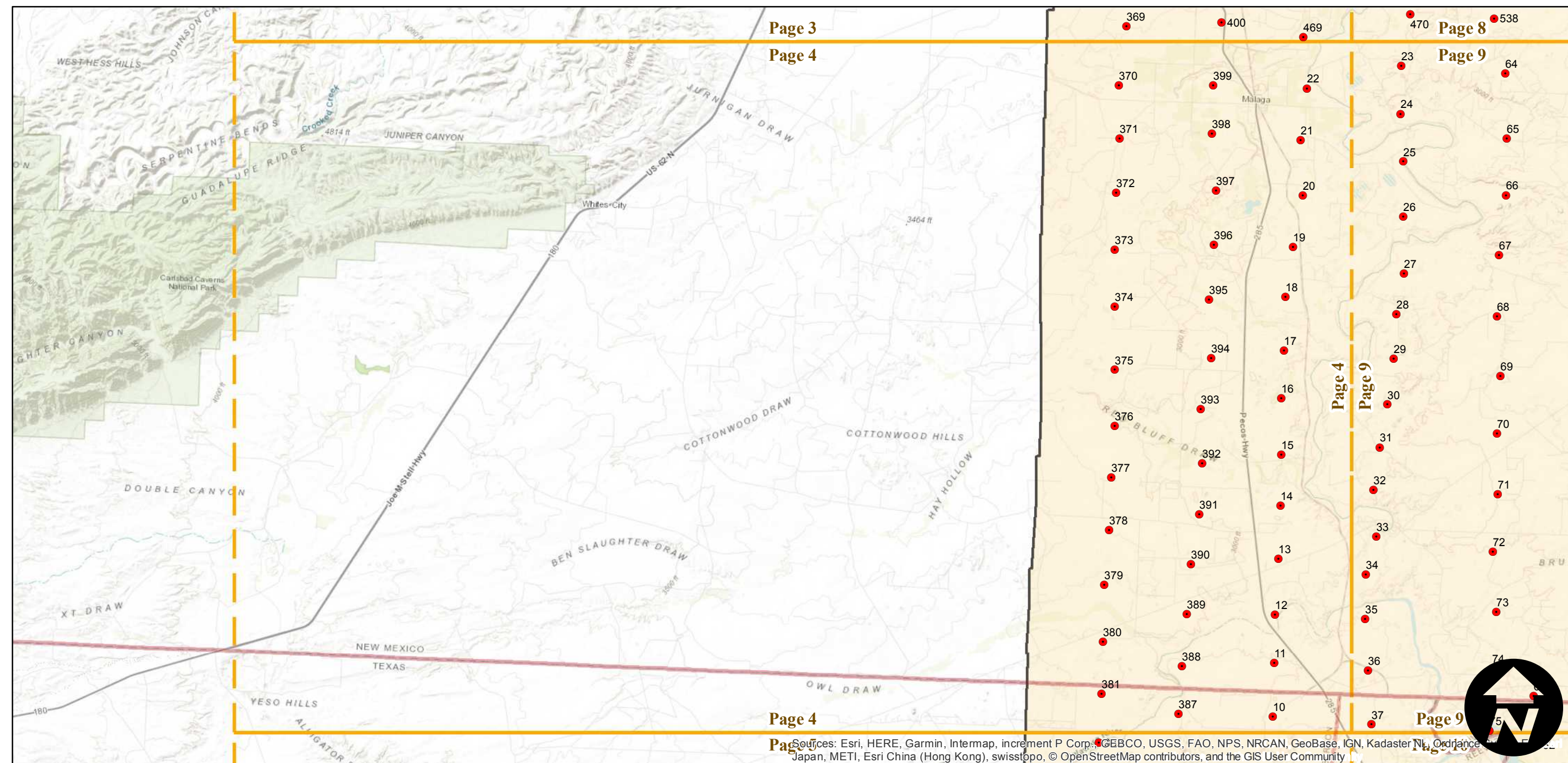
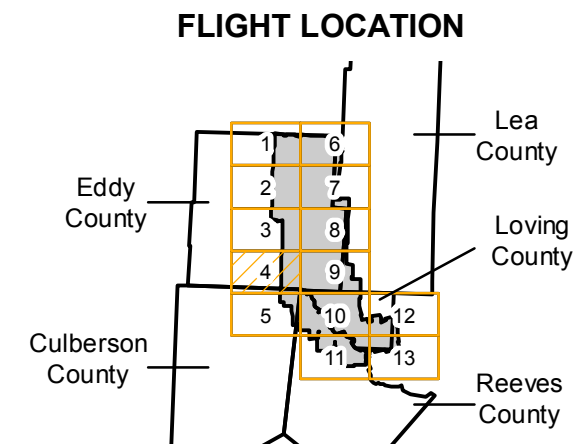
Scale of this index: 1:175,000

Sources: Esri, HERE, Garmin, Intermap, increment P Corp., GEBCO, USGS, FAO, NPS, NRCAN, GeoBase, IGN, Kadaster NL, Ordnance Survey, Esri Japan, METI, Esri China (Hong Kong), swisstopo, ©OpenStreetMap contributors, and the GIS User Community

C-4559

Counties: Texas; Culberson, Loving, Reeves. New Mexico; Eddy, Lea.
 Flight date(s): 05-01-1937 to 05-31-1937
 Scale: 1:31,680
 Overlap: 60-80%

Note: Eastern Eddy County (New Mexico), southwestern Loving County (Texas), and vicinity. Notable areas covered include Loving, Malaga, Red Bluff Reservoir, Angeles, and Orla. Exact flight date is unknown. Most of photography held in roll film format. Imagery acquired January 2013.



Sources: Esri, HERE, Garmin, Intermap, increment P Corp., GEBCO, USGS, FAO, NPS, NRCAN, GeoBase, IGN, Kadaster NL, Ordnance Survey, Esri Japan, METI, Esri China (Hong Kong), swisstopo, © OpenStreetMap contributors, and the GIS User Community

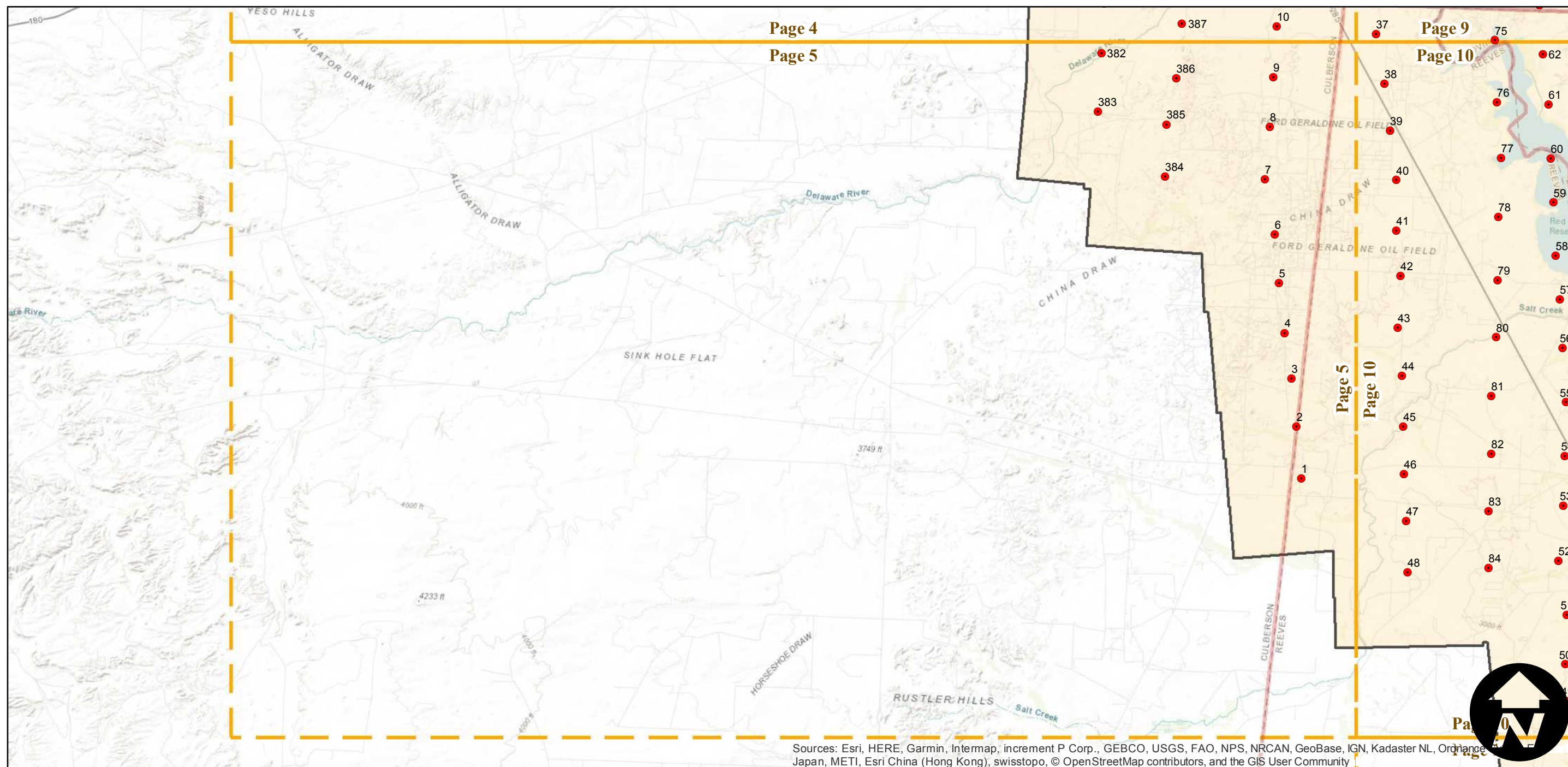
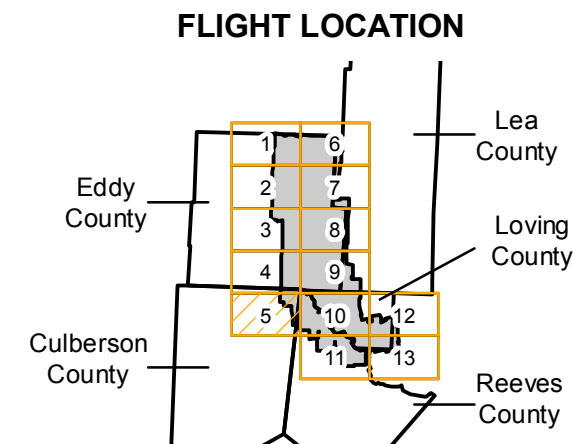


C-4559

Counties: Texas; Culberson, Loving, Reeves. New Mexico; Eddy, Lea.
 Flight date(s): 05-01-1937 to 05-31-1937
 Scale: 1:31,680
 Overlap: 60-80%

Note: Eastern Eddy County (New Mexico), southwestern Loving County (Texas), and vicinity. Notable areas covered include Loving, Malaga, Red Bluff Reservoir, Angeles, and Orla. Exact flight date is unknown. Most of photography held in roll film format. Imagery acquired January 2013.

Complete Metadata:
<https://www.library.ucsb.edu/src/airphotos/aerial-photography-information>



Sources: Esri, HERE, Garmin, Intermap, increment P Corp., GEBCO, USGS, FAO, NPS, NRCAN, GeoBase, IGN, Kadaster NL, Ordnance Survey, Esri Japan, METI, Esri China (Hong Kong), swisstopo, © OpenStreetMap contributors, and the GIS User Community

0 3 6 12 Miles

Index to Aerial Photography
 Page 5 of 13

Scale of this index: 1:175,000

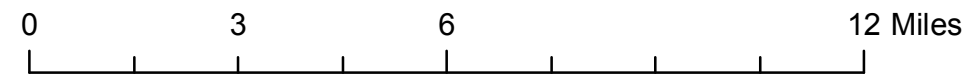
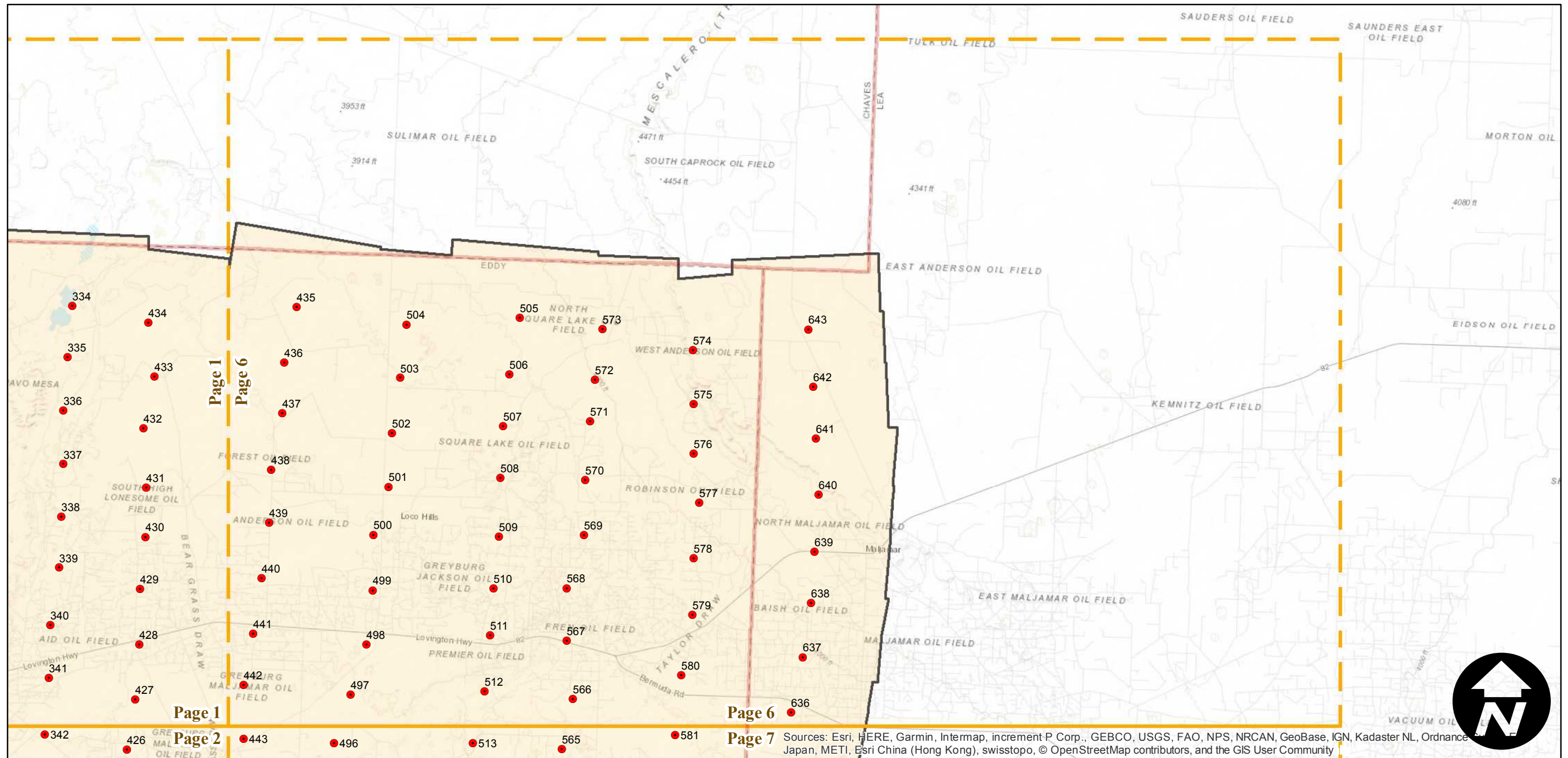
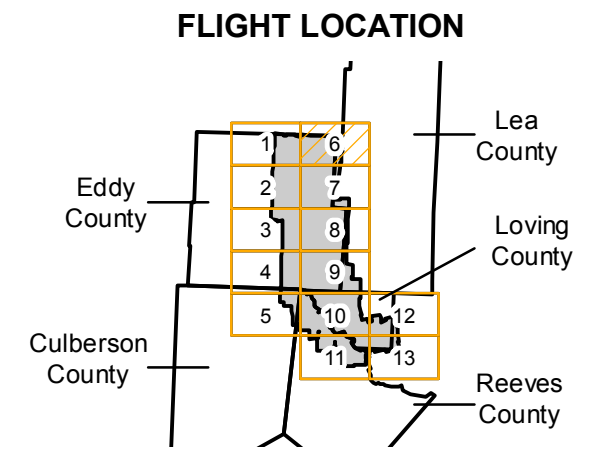


C-4559

Counties: Texas; Culberson, Loving, Reeves. New Mexico; Eddy, Lea.
Flight date(s): 05-01-1937 to 05-31-1937
Scale: 1:31,680
Overlap: 60-80%

Note: Eastern Eddy County (New Mexico), southwestern Loving County (Texas), and vicinity. Notable areas covered include Loving, Malaga, Red Bluff Reservoir, Angeles, and Orla. Exact flight date is unknown. Most of photography held in roll film format. Imagery acquired January 2013.

Complete Metadata:
<https://www.library.ucsb.edu/src/airphotos/aerial-photography-information>



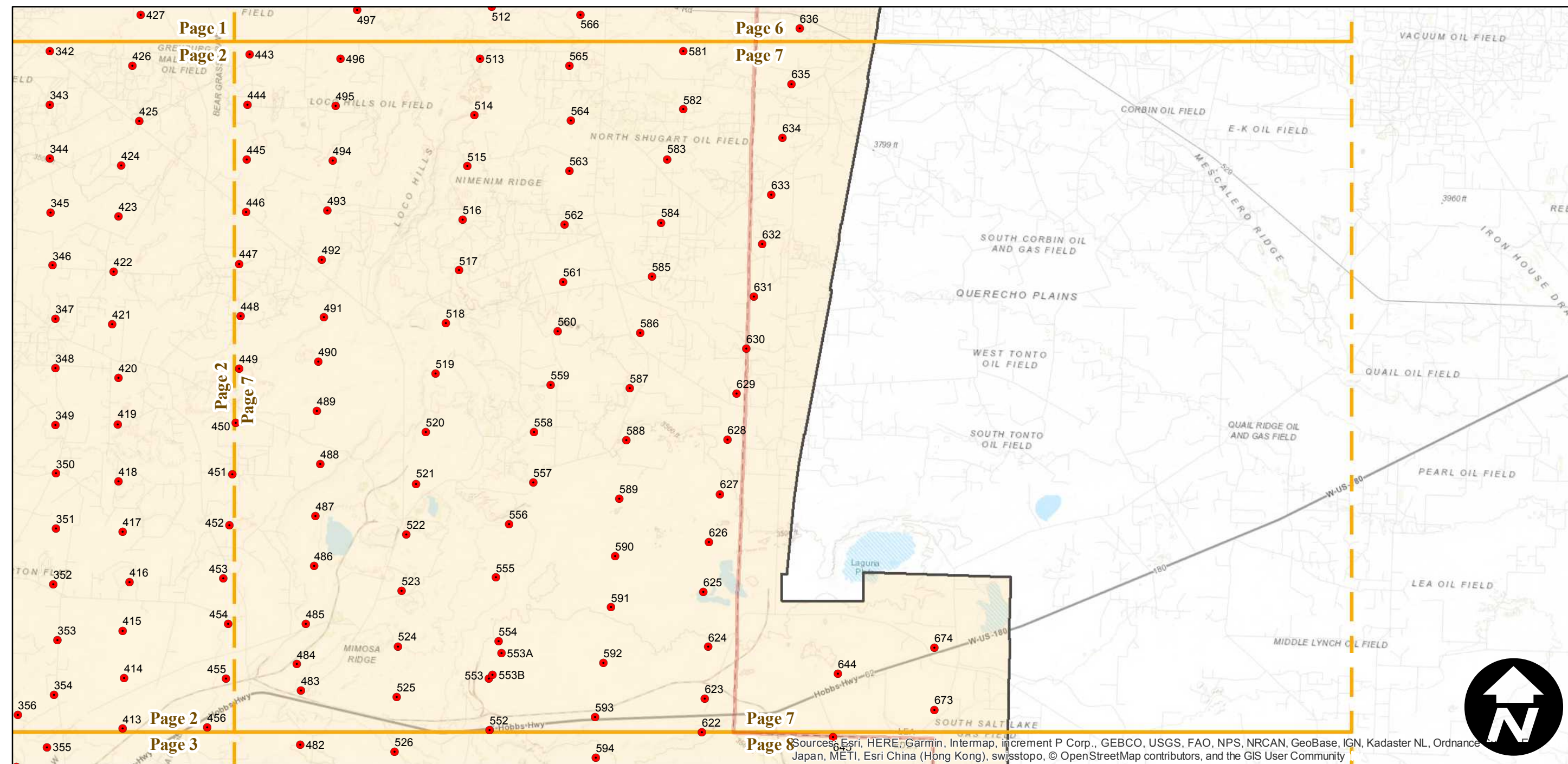
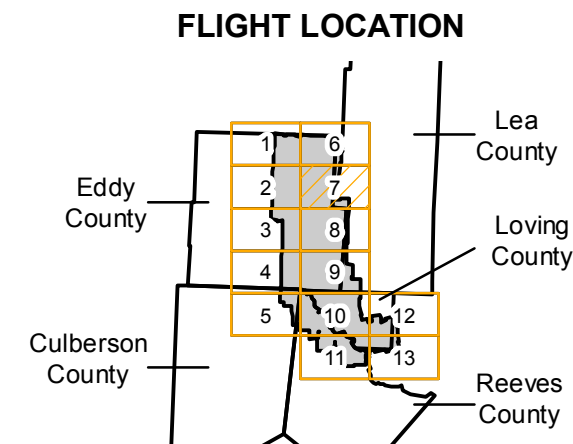
Sources: Esri, HERE, Garmin, Intermap, increment P Corp., GEBCO, USGS, FAO, NPS, NRCAN, GeoBase, IGN, Kadaster NL, Ordnance Survey, Esri China (Hong Kong), Swisstopo, © OpenStreetMap contributors, and the GIS User Community

C-4559

Counties: Texas; Culberson, Loving, Reeves. New Mexico; Eddy, Lea.
 Flight date(s): 05-01-1937 to 05-31-1937
 Scale: 1:31,680
 Overlap: 60-80%

Note: Eastern Eddy County (New Mexico), southwestern Loving County (Texas), and vicinity. Notable areas covered include Loving, Malaga, Red Bluff Reservoir, Angeles, and Orla. Exact flight date is unknown. Most of photography held in roll film format. Imagery acquired January 2013.

Complete Metadata:
<https://www.library.ucsb.edu/src/airphotos/aerial-photography-information>



0 3 6 12 Miles

Index to Aerial Photography
 Page 7 of 13

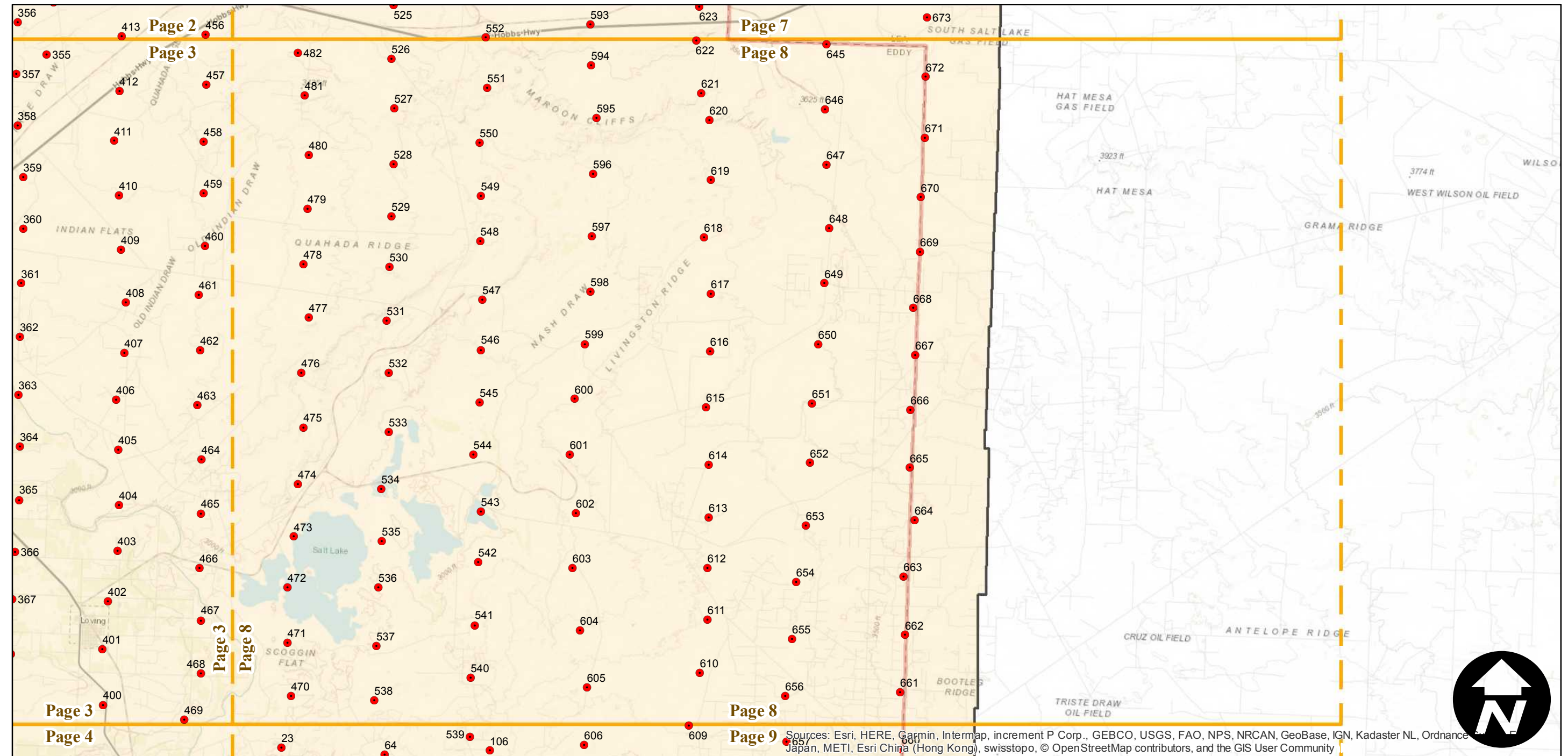
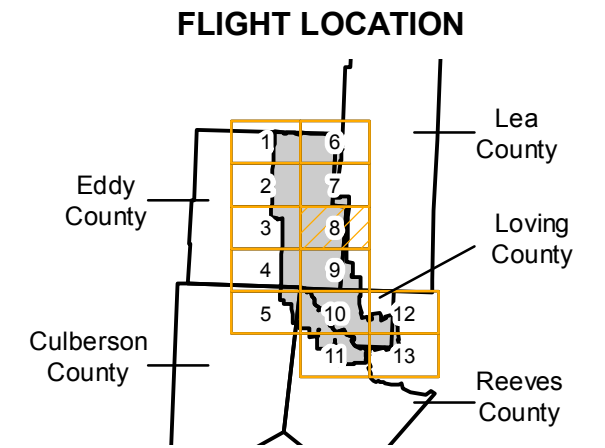
Scale of this index: 1:175,000

Source: Esri, HERE, Garmin, Intermap, increment P Corp., GEBCO, USGS, FAO, NPS, NRCAN, GeoBase, IGN, Kadaster NL, Ordnance Survey, Esri Japan, METI, Esri China (Hong Kong), swisstopo, © OpenStreetMap contributors, and the GIS User Community

C-4559

Counties: Texas; Culberson, Loving, Reeves. New Mexico; Eddy, Lea.
Flight date(s): 05-01-1937 to 05-31-1937
Scale: 1:31,680
Overlap: 60-80%

Note: Eastern Eddy County (New Mexico), southwestern Loving County (Texas), and vicinity. Notable areas covered include Loving, Malaga, Red Bluff Reservoir, Angeles, and Orla. Exact flight date is unknown. Most of photography held in roll film format. Imagery acquired January 2013.



0 3 6 12 Miles

Index to Aerial Photography
Page 8 of 13

Scale of this index: 1:175,000

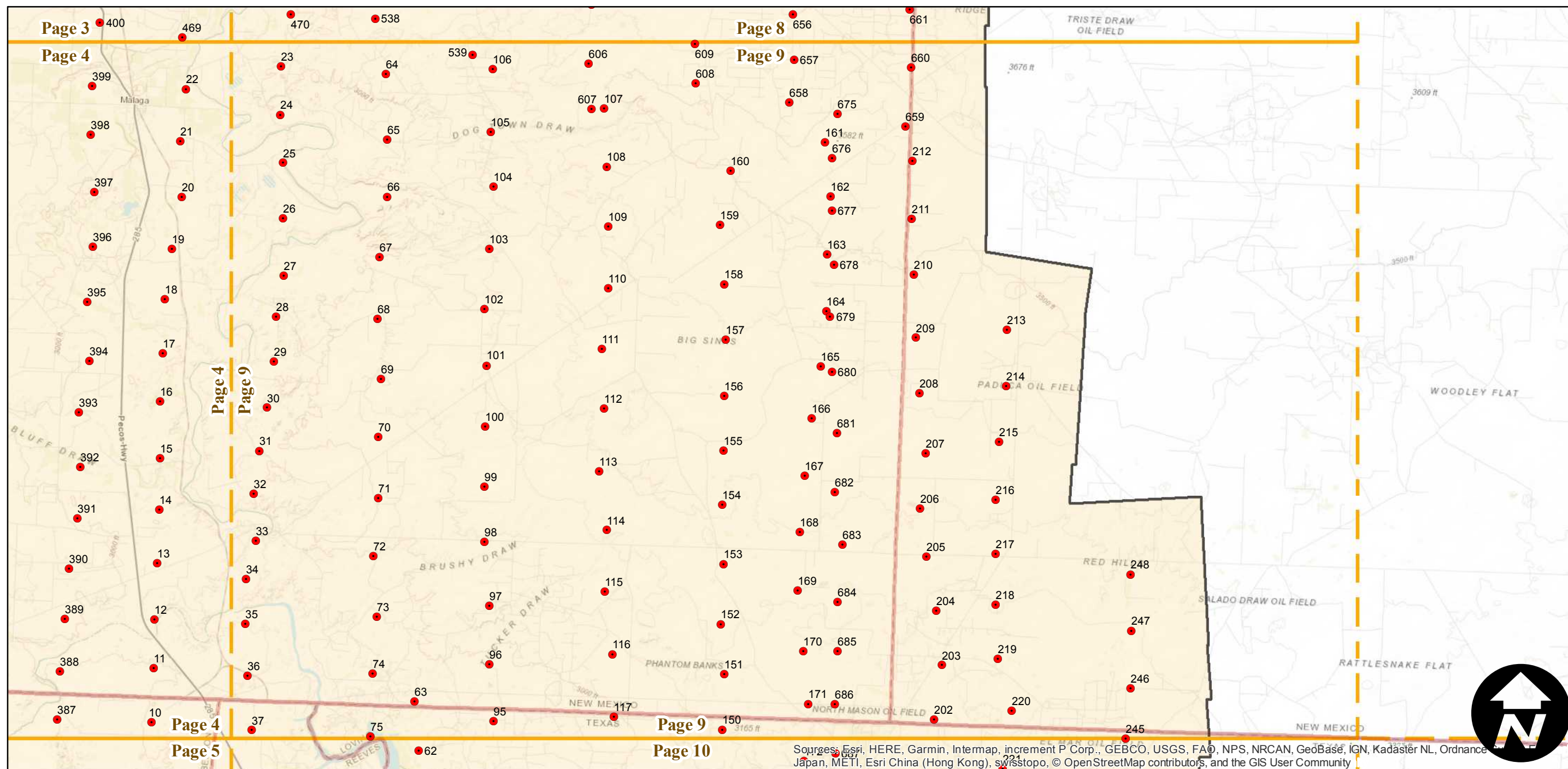
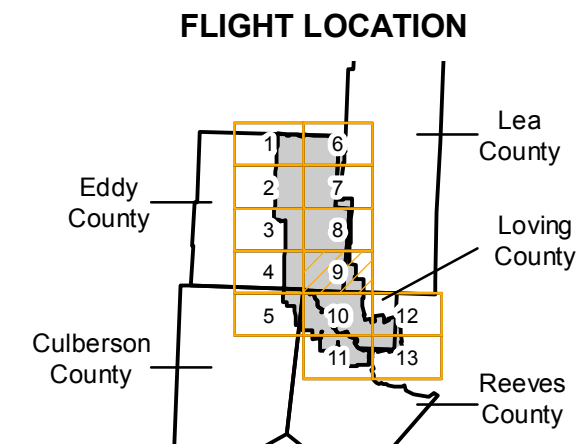
Sources: Esri, HERE, Garmin, Intermap, increment P Corp., GEBCO, USGS, FAO, NPS, NRCAN, GeoBase, IGN, Kadaster NL, Ordnance Survey, Esri, METI, Esri China (Hong Kong), swisstopo, © OpenStreetMap contributors, and the GIS User Community

C-4559

Counties: Texas; Culberson, Loving, Reeves. New Mexico; Eddy, Lea.
Flight date(s): 05-01-1937 to 05-31-1937
Scale: 1:31,680
Overlap: 60-80%

Complete Metadata:
<https://www.library.ucsb.edu/src/airphotos/aerial-photography-information>

Note: Eastern Eddy County (New Mexico), southwestern Loving County (Texas), and vicinity. Notable areas covered include Loving, Malaga, Red Bluff Reservoir, Angeles, and Orla. Exact flight date is unknown. Most of photography held in roll film format. Imagery acquired January 2013.



Sources: Esri, HERE, Garmin, Intermap, increment P Corp., GEBCO, USGS, FAO, NPS, NRCAN, GeoBase, IGN, Kadaster NL, Ordnance Survey, Esri, HERE, Esri China (Hong Kong), swisstopo, © OpenStreetMap contributors, and the GIS User Community

0 3 6 12 Miles

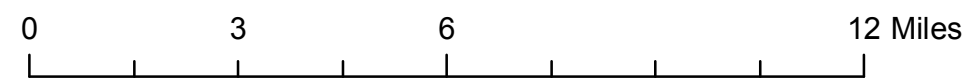
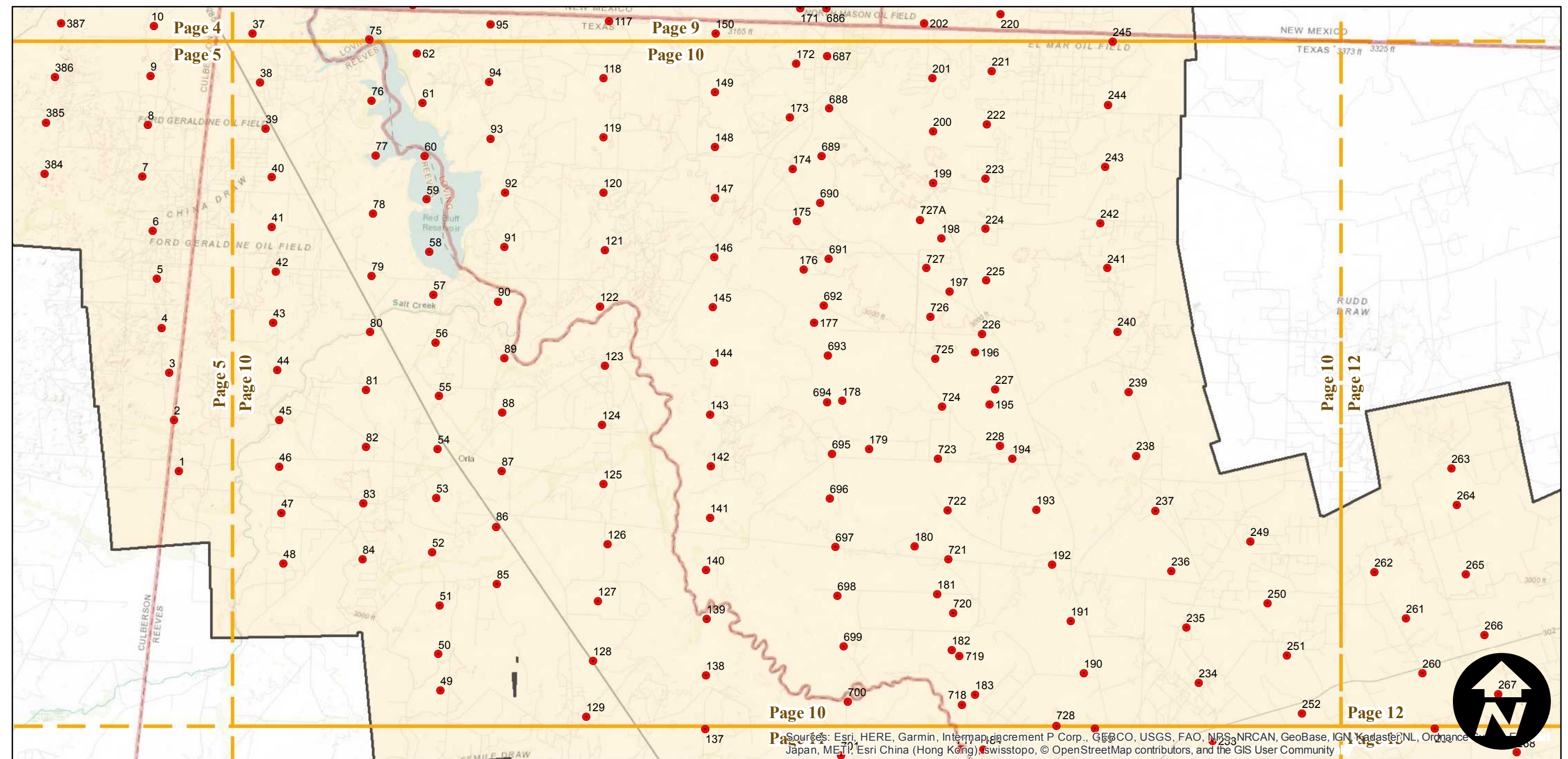
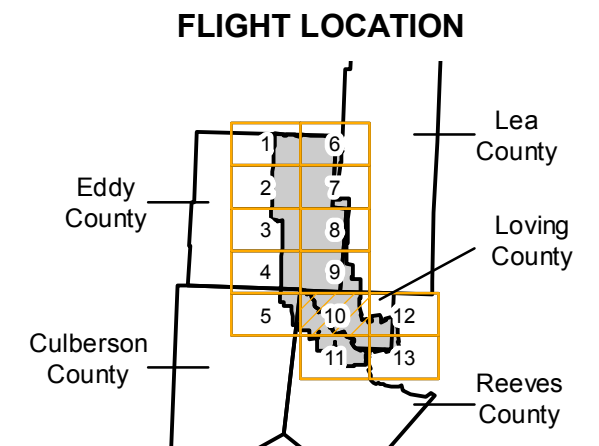
Index to Aerial Photography
Page 9 of 13

Scale of this index: 1:175,000

C-4559

Counties: Texas; Culberson, Loving, Reeves. New Mexico; Eddy, Lea.
Flight date(s): 05-01-1937 to 05-31-1937
Scale: 1:31,680
Overlap: 60-80%

Note: Eastern Eddy County (New Mexico), southwestern Loving County (Texas), and vicinity. Notable areas covered include Loving, Malaga, Red Bluff Reservoir, Angeles, and Orla. Exact flight date is unknown. Most of photography held in roll film format. Imagery acquired January 2013.



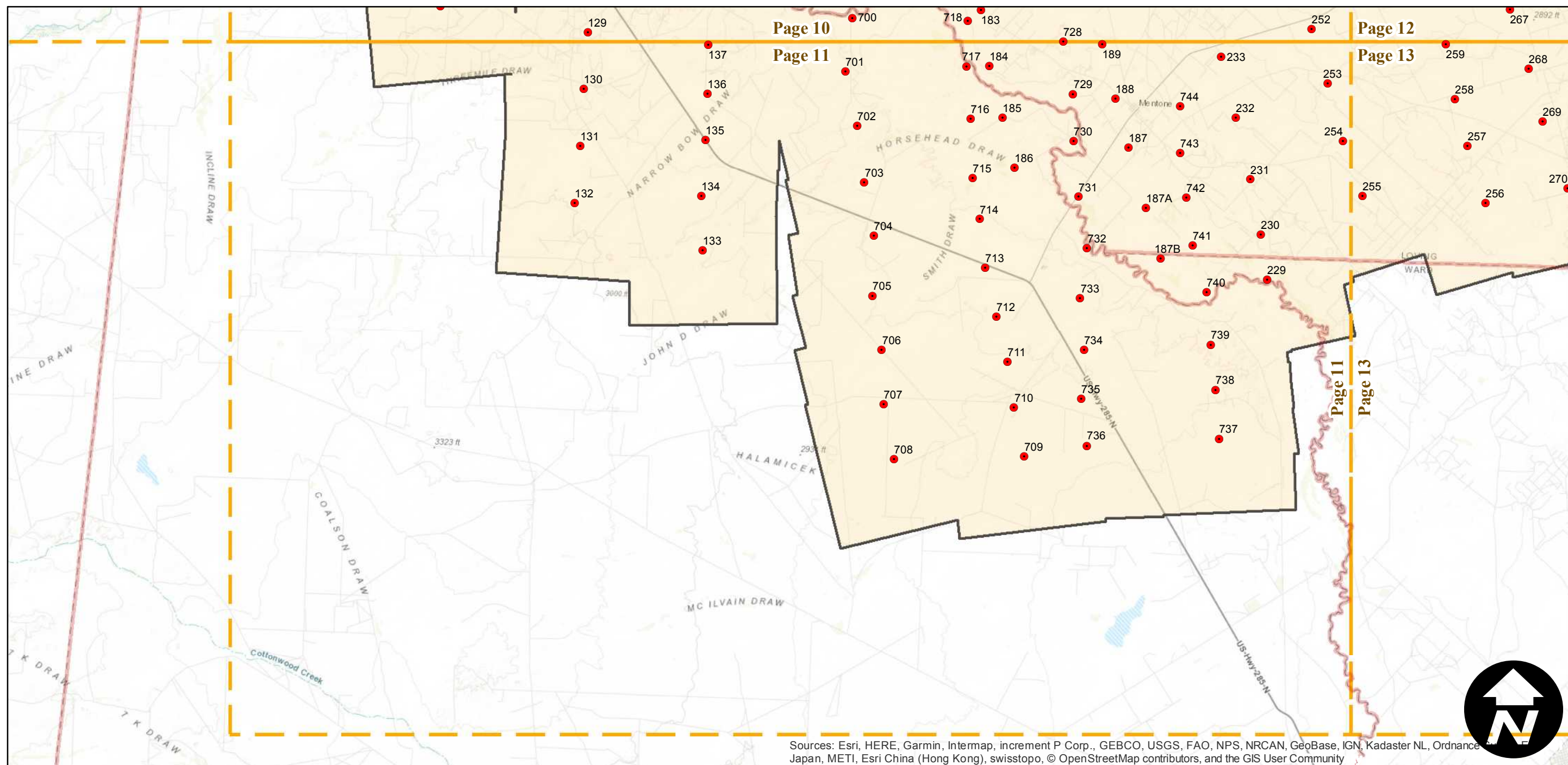
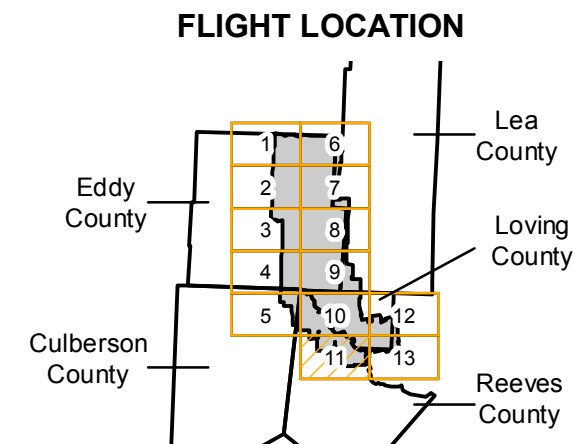
Sources: Esri, HERE, Garmin, Intermap, increment P Corp., GEBCO, USGS, FAO, NRS, NRCAN, GeoBase, IGN, Kadaster NL, Ordnance Survey, Esri, Japan, METI, Esri China (Hong Kong), Swisstopo, © OpenStreetMap contributors, and the GIS User Community



C-4559

Counties: Texas; Culberson, Loving, Reeves. New Mexico; Eddy, Lea.
Flight date(s): 05-01-1937 to 05-31-1937
Scale: 1:31,680
Overlap: 60-80%

Note: Eastern Eddy County (New Mexico), southwestern Loving County (Texas), and vicinity. Notable areas covered include Loving, Malaga, Red Bluff Reservoir, Angeles, and Orla. Exact flight date is unknown. Most of photography held in roll film format. Imagery acquired January 2013.



Sources: Esri, HERE, Garmin, Intermap, increment P Corp., GEBCO, USGS, FAO, NPS, NRCAN, GeoBase, IGN, Kadaster NL, Ordnance Survey, Esri Japan, METI, Esri China (Hong Kong), swisstopo, © OpenStreetMap contributors, and the GIS User Community

0 3 6 12 Miles

Index to Aerial Photography
Page 11 of 13

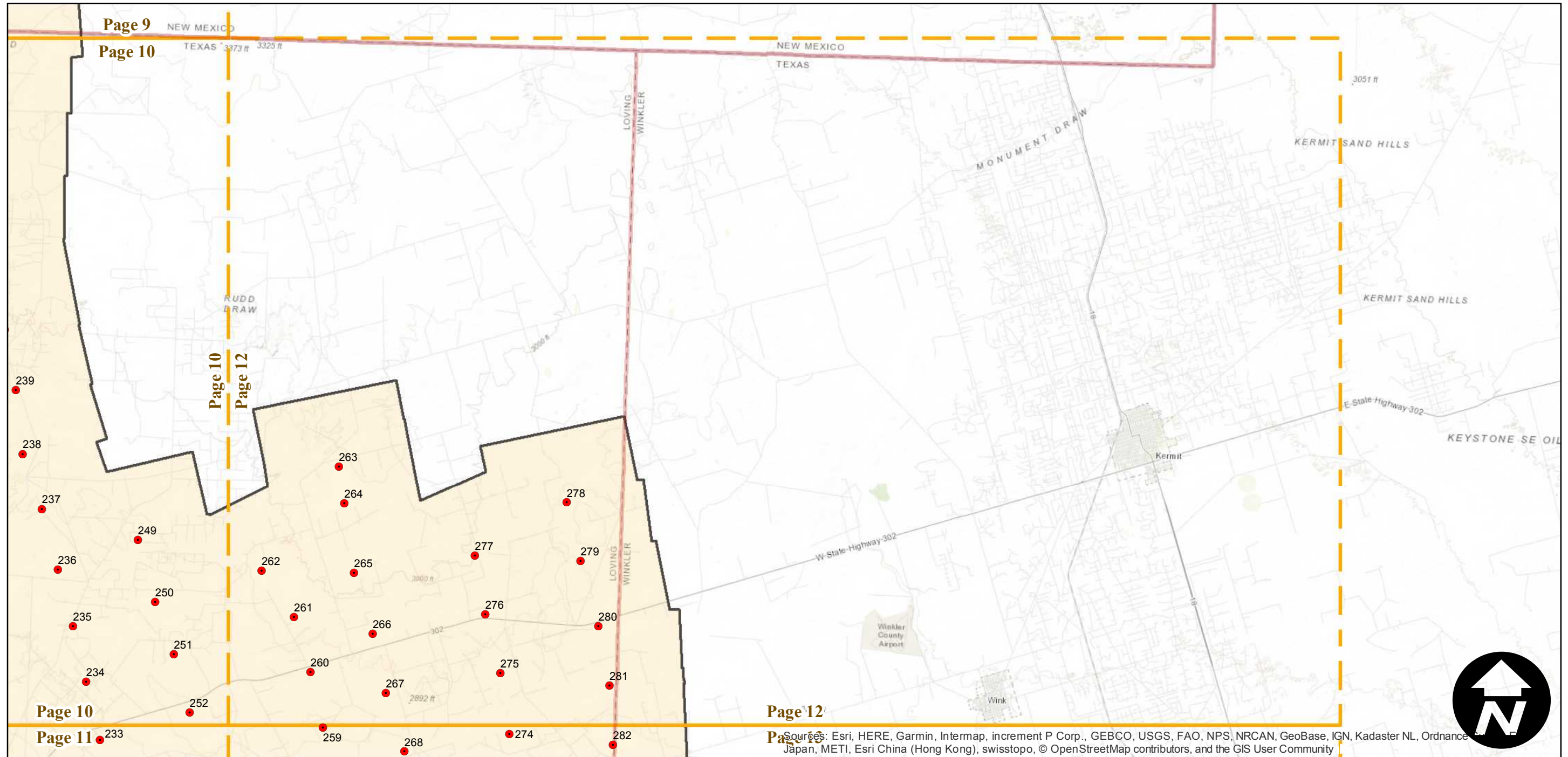
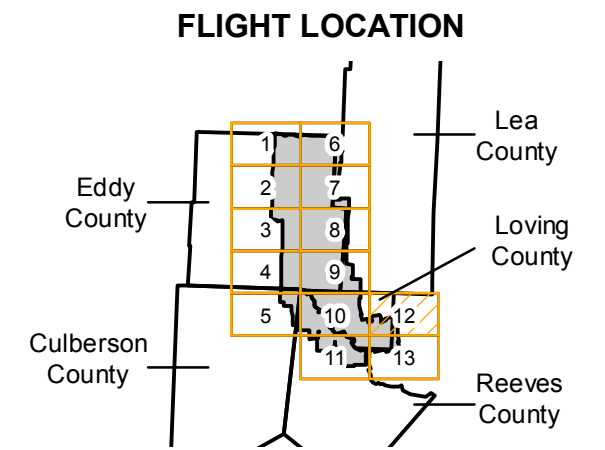
Scale of this index: 1:175,000

C-4559

Counties: Texas; Culberson, Loving, Reeves. New Mexico; Eddy, Lea.
Flight date(s): 05-01-1937 to 05-31-1937
Scale: 1:31,680
Overlap: 60-80%

Complete Metadata:
<https://www.library.ucsb.edu/src/airphotos/aerial-photography-information>

Note: Eastern Eddy County (New Mexico), southwestern Loving County (Texas), and vicinity. Notable areas covered include Loving, Malaga, Red Bluff Reservoir, Angeles, and Orla. Exact flight date is unknown. Most of photography held in roll film format. Imagery acquired January 2013.



0 3 6 12 Miles

Index to Aerial Photography
Page 12 of 13

Scale of this index: 1:175,000

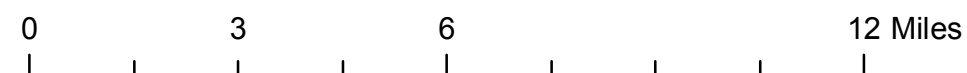
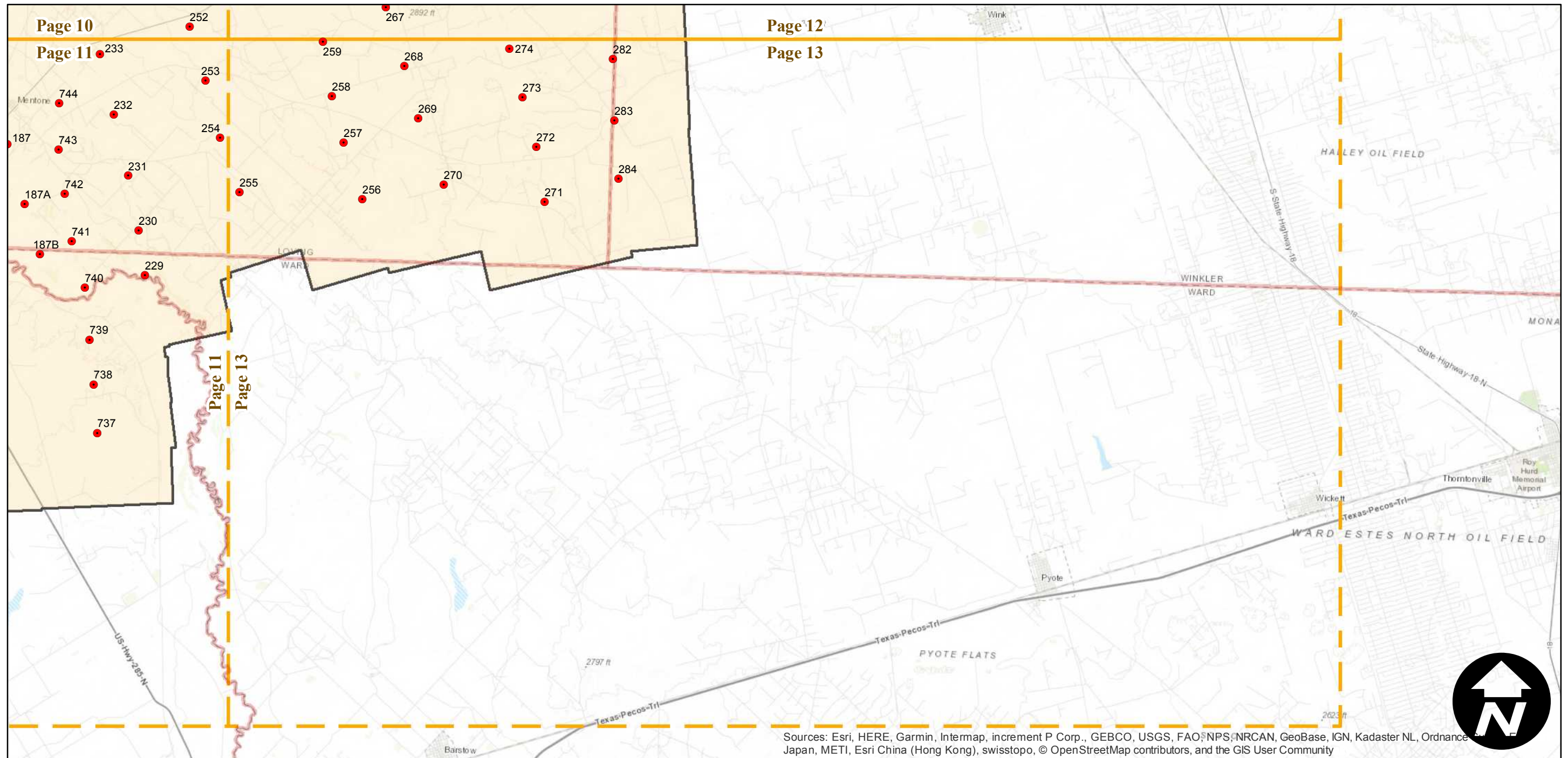
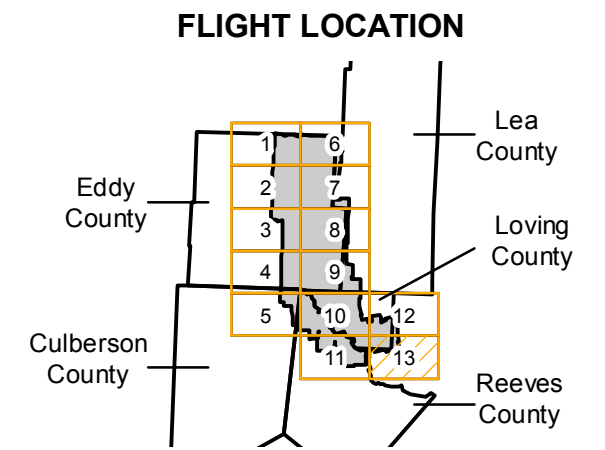
Sources: Esri, HERE, Garmin, Intermap, increment P Corp., GEBCO, USGS, FAO, NPS, NRCAN, GeoBase, IGN, Kadaster NL, Ordnance Survey, Esri Japan, METI, Esri China (Hong Kong), swisstopo, © OpenStreetMap contributors, and the GIS User Community

C-4559

Counties: Texas; Culberson, Loving, Reeves. New Mexico; Eddy, Lea.
 Flight date(s): 05-01-1937 to 05-31-1937
 Scale: 1:31,680
 Overlap: 60-80%

Note: Eastern Eddy County (New Mexico), southwestern Loving County (Texas), and vicinity. Notable areas covered include Loving, Malaga, Red Bluff Reservoir, Angeles, and Orla. Exact flight date is unknown. Most of photography held in roll film format. Imagery acquired January 2013.

Complete Metadata:
<https://www.library.ucsb.edu/src/airphotos/aerial-photography-information>



Sources: Esri, HERE, Garmin, Intermap, increment P Corp., GEBCO, USGS, FAO, NPS, NRCAN, GeoBase, IGN, Kadaster NL, Ordnance Survey, Esri Japan, METI, Esri China (Hong Kong), swisstopo, © OpenStreetMap contributors, and the GIS User Community

