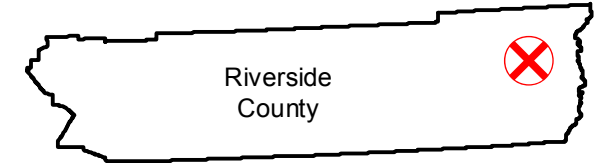


C-4500

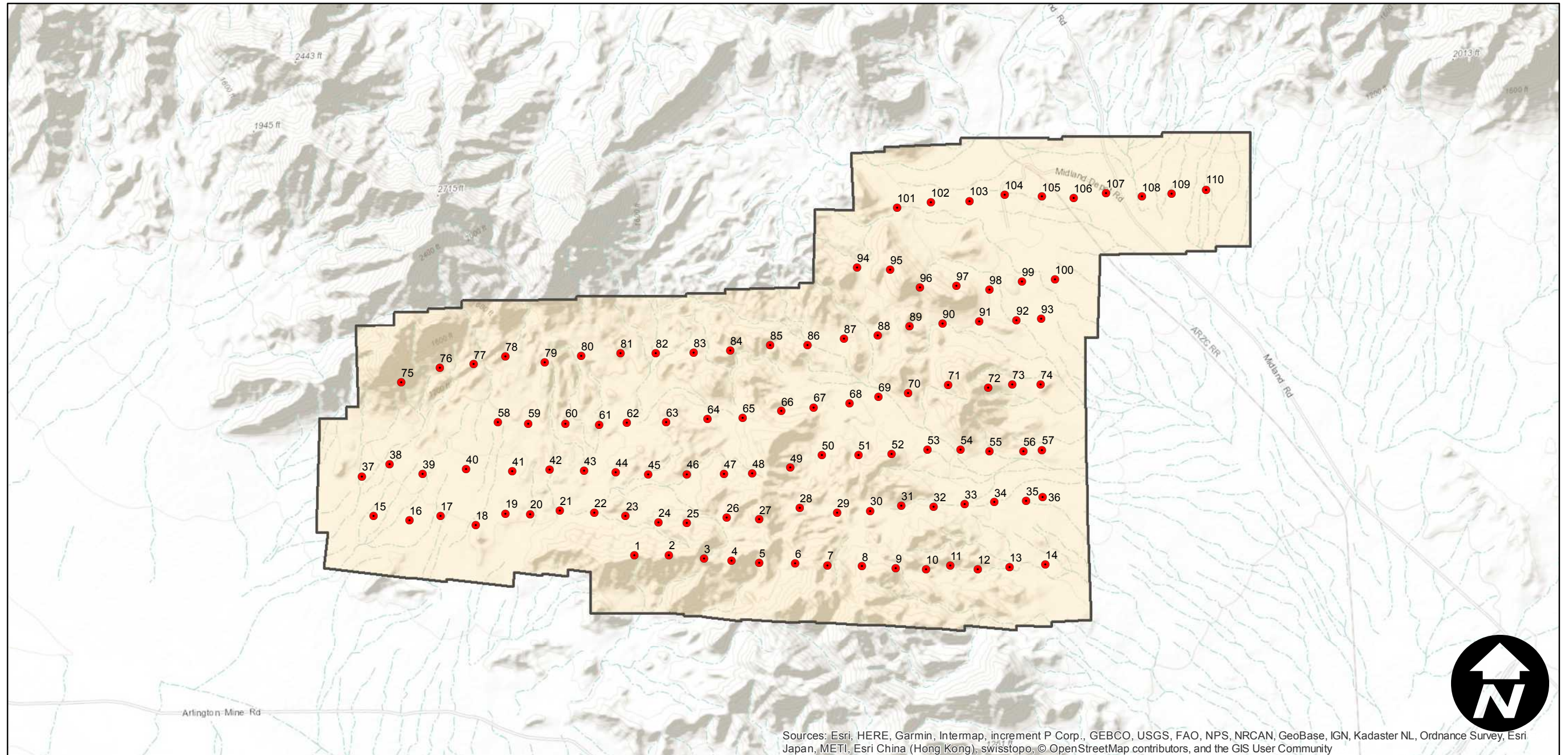
Counties: Riverside
Flight date(s): 05-10-1937
Scale: 1:4,560
Overlap: 60%

Note: Vicinity of Midland and Standard Mine. Imagery acquired January 2013. Nitrate negatives scanned, July 2015.

FLIGHT LOCATION



Complete Metadata:
<https://www.library.ucsb.edu/src/airphotos/aerial-photography-information>



Sources: Esri, HERE, Garmin, Intermap, increment P Corp., GEBCO, USGS, FAO, NPS, NRCAN, GeoBase, IGN, Kadaster NL, Ordnance Survey, Esri Japan, METI, Esri China (Hong Kong), swisstopo, © OpenStreetMap contributors, and the GIS User Community

0 0.5 1 2 Miles