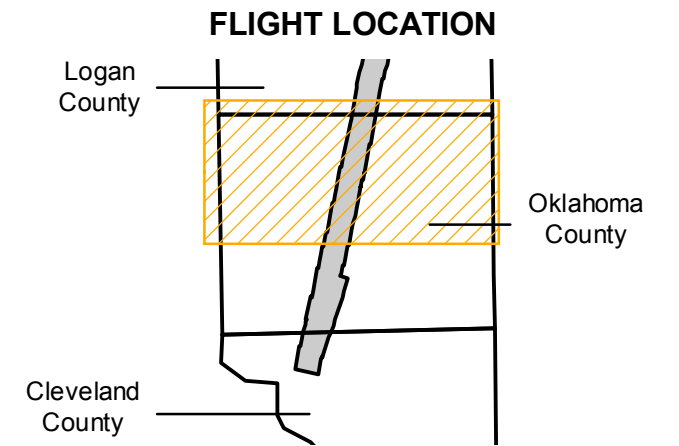


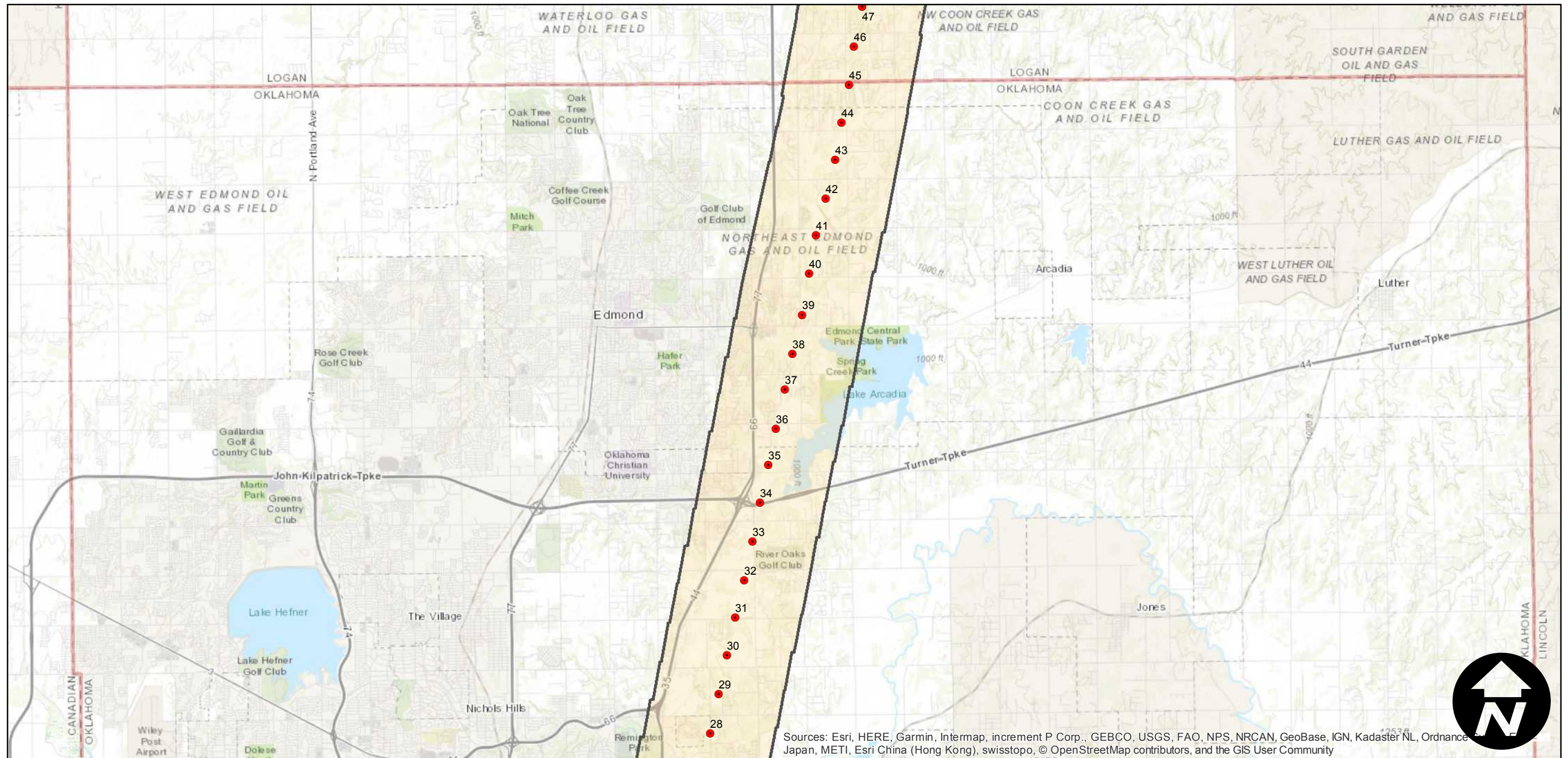
# C-4376 (Oklahoma)

Counties: Oklahoma, Cleveland (Oklahoma)  
Flight date(s): 02-01-1937 to 02-28-1937  
Scale: 1:18,000  
Overlap: 60%

Note: Pipeline survey. Covers Lake Arcadia, Forest Park, Del City, Valley Brook, Moore, and areas in-between. Exact flight date is unknown. Imagery acquired, January 2013. Nitrate negatives scanned, July 2015.



Complete Metadata:  
<https://www.library.ucsb.edu/src/airphotos/aerial-photography-information>



0 2 4 8 Miles

Index to Aerial Photography  
Page 1 of 2

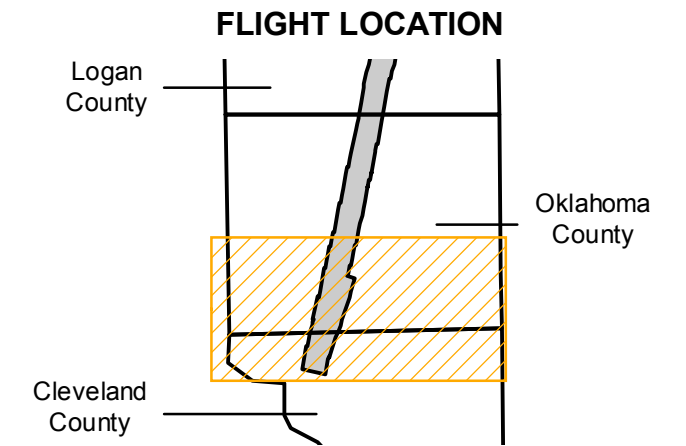
Scale of this index: 1:135,000



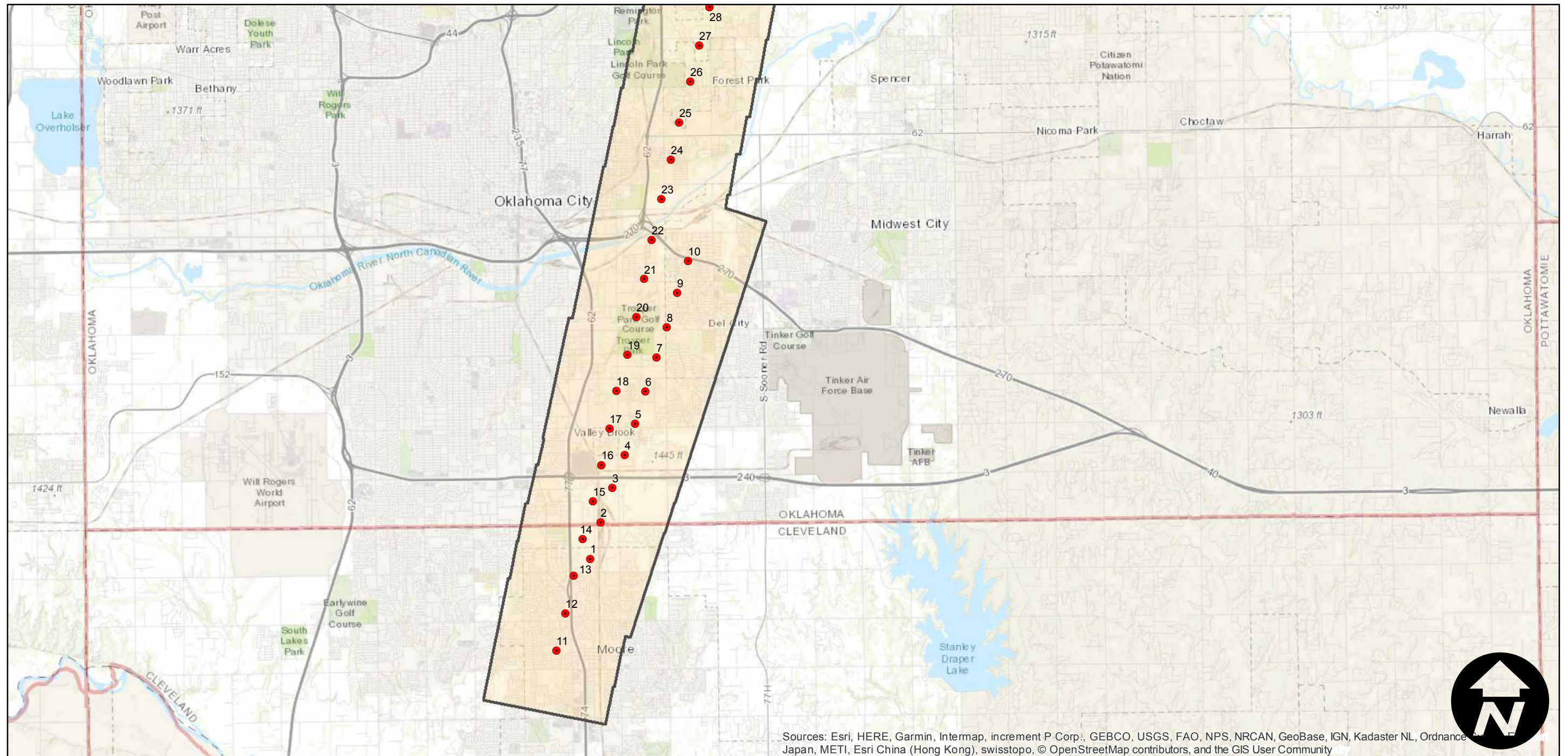
# C-4376 (Oklahoma)

Counties: Oklahoma, Cleveland (Oklahoma)  
Flight date(s): 02-01-1937 to 02-28-1937  
Scale: 1:18,000  
Overlap: 60%

Note: Pipeline survey. Covers Lake Arcadia, Forest Park, Del City, Valley Brook, Moore, and areas in-between. Exact flight date is unknown. Imagery acquired, January 2013. Nitrate negatives scanned, July 2015.



Complete Metadata:  
<https://www.library.ucsb.edu/src/airphotos/aerial-photography-information>



Sources: Esri, HERE, Garmin, Intermap, increment P Corp., GEBCO, USGS, FAO, NPS, NRCAN, GeoBase, IGN, Kadaster NL, Ordnance Survey, Esri Japan, METI, Esri China (Hong Kong), swisstopo, © OpenStreetMap contributors, and the GIS User Community

0 2 4 8 Miles

Index to Aerial Photography  
Page 2 of 2

Scale of this index: 1:135,000