

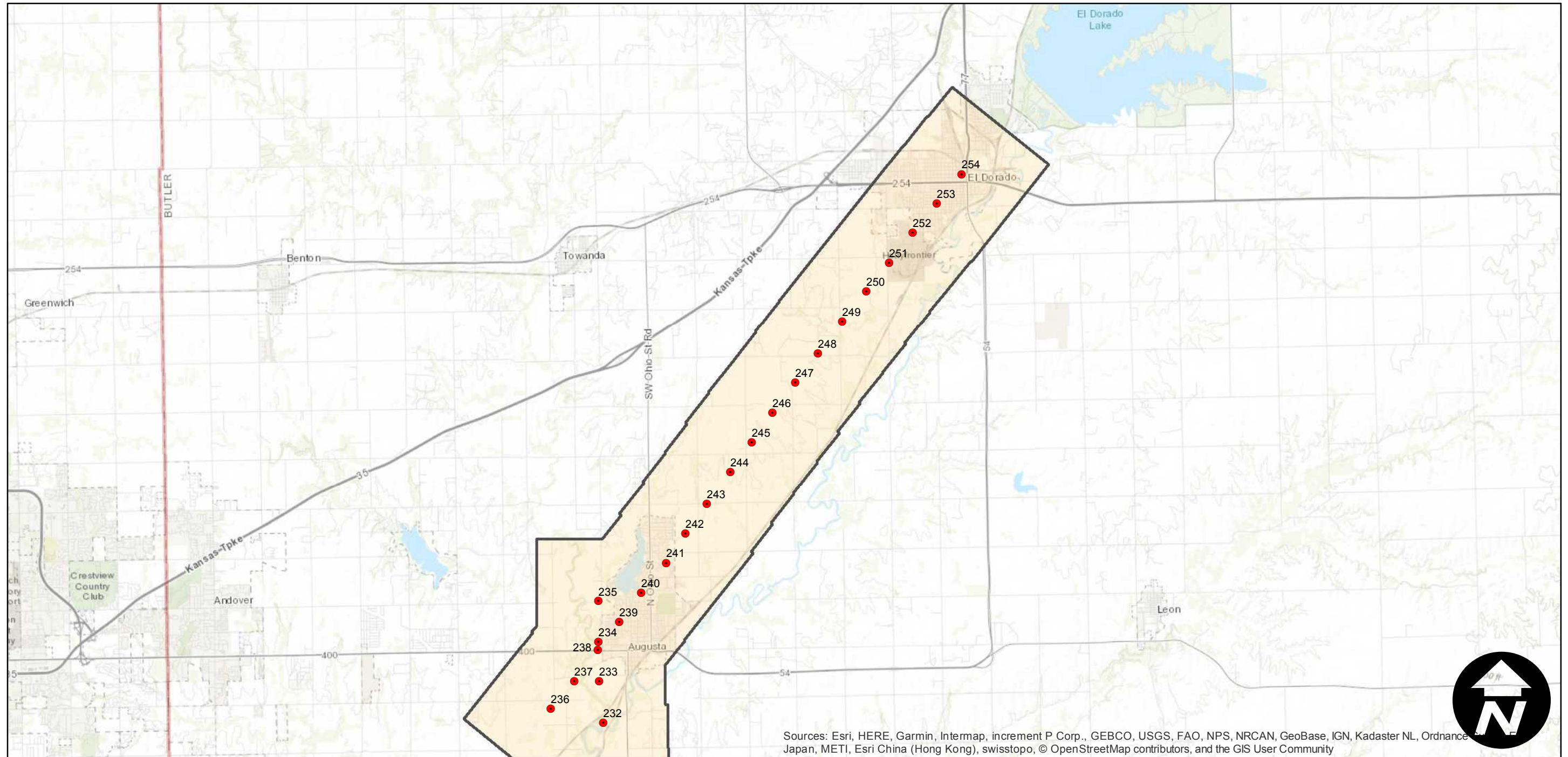
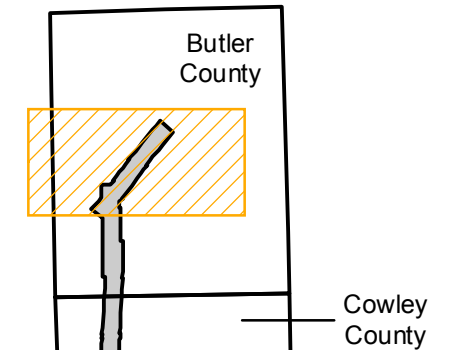
C-4376 (Butler)

Counties: Butler (Kansas)
Flight date(s): 02-01-1937 to 02-28-1937
Scale: 1:18,000
Overlap: 60%

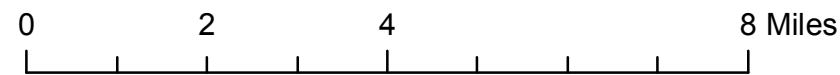
Note: Pipeline survey. Covers El Dorado, Augusta, Douglas, and areas in-between. Exact flight date is unknown. Imagery acquired, January 2013. Nitrate negatives scanned, July 2015.

Complete Metadata:
<https://www.library.ucsb.edu/src/airphotos/aerial-photography-information>

FLIGHT LOCATION



Sources: Esri, HERE, Garmin, Intermap, increment P Corp., GEBCO, USGS, FAO, NPS, NRCAN, GeoBase, IGN, Kadaster NL, Ordnance Survey, Esri Japan, METI, Esri China (Hong Kong), swisstopo, © OpenStreetMap contributors, and the GIS User Community



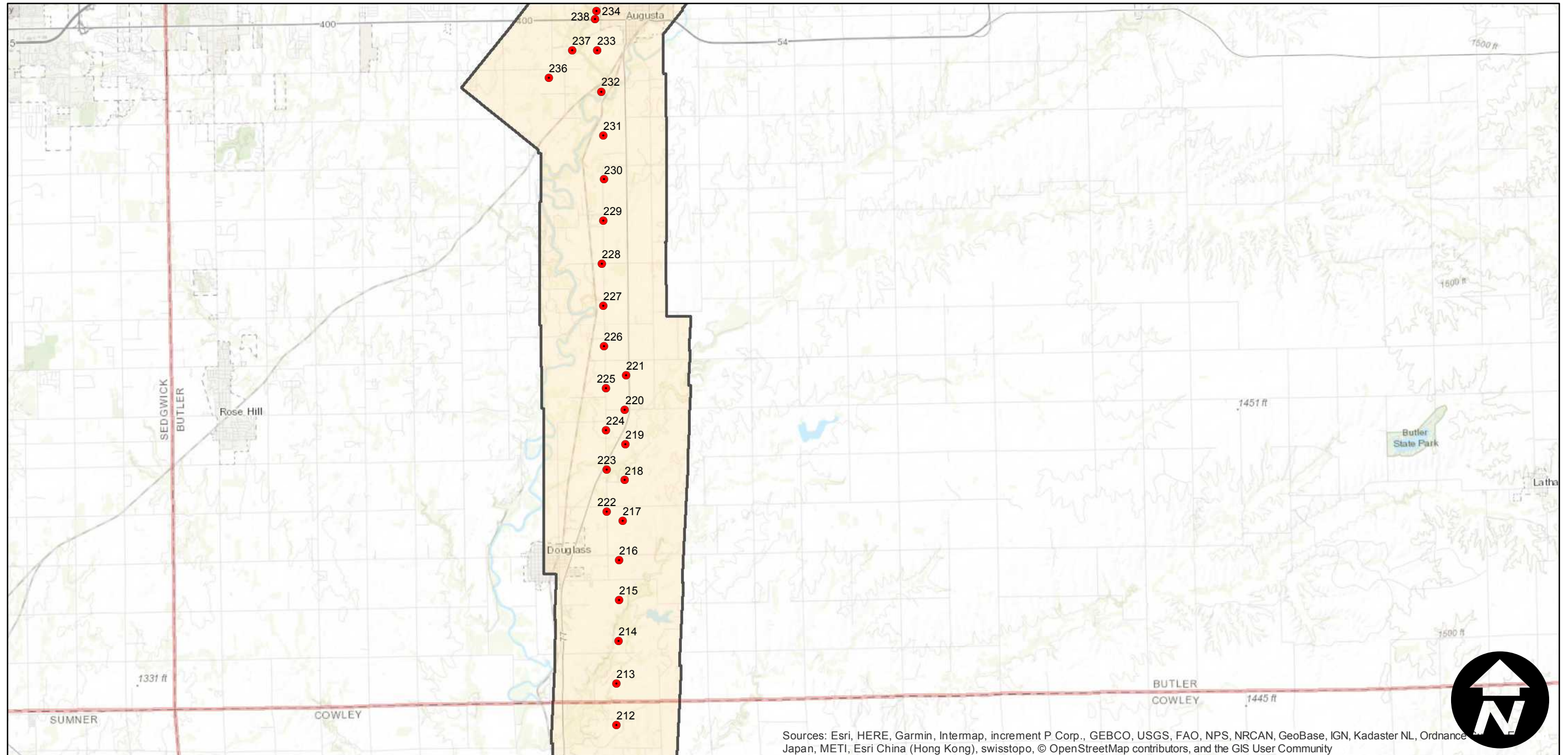
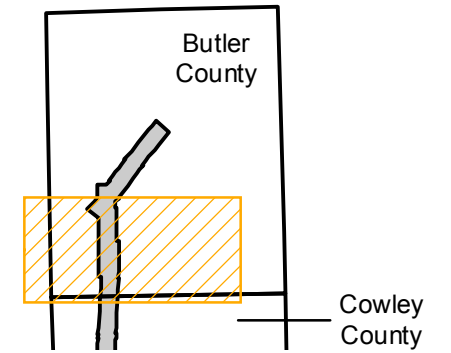
C-4376 (Butler)

Counties: Butler (Kansas)
Flight date(s): 02-01-1937 to 02-28-1937
Scale: 1:18,000
Overlap: 60%

Note: Pipeline survey. Covers El Dorado, Augusta, Douglas, and areas in-between. Exact flight date is unknown. Imagery acquired, January 2013. Nitrate negatives scanned, July 2015.

Complete Metadata:
<https://www.library.ucsb.edu/src/airphotos/aerial-photography-information>

FLIGHT LOCATION



Sources: Esri, HERE, Garmin, Intermap, increment P Corp., GEBCO, USGS, FAO, NPS, NRCAN, GeoBase, IGN, Kadaster NL, Ordnance Survey, Esri China (Hong Kong), Swisstopo, © OpenStreetMap contributors, and the GIS User Community

0 2 4 8 Miles