

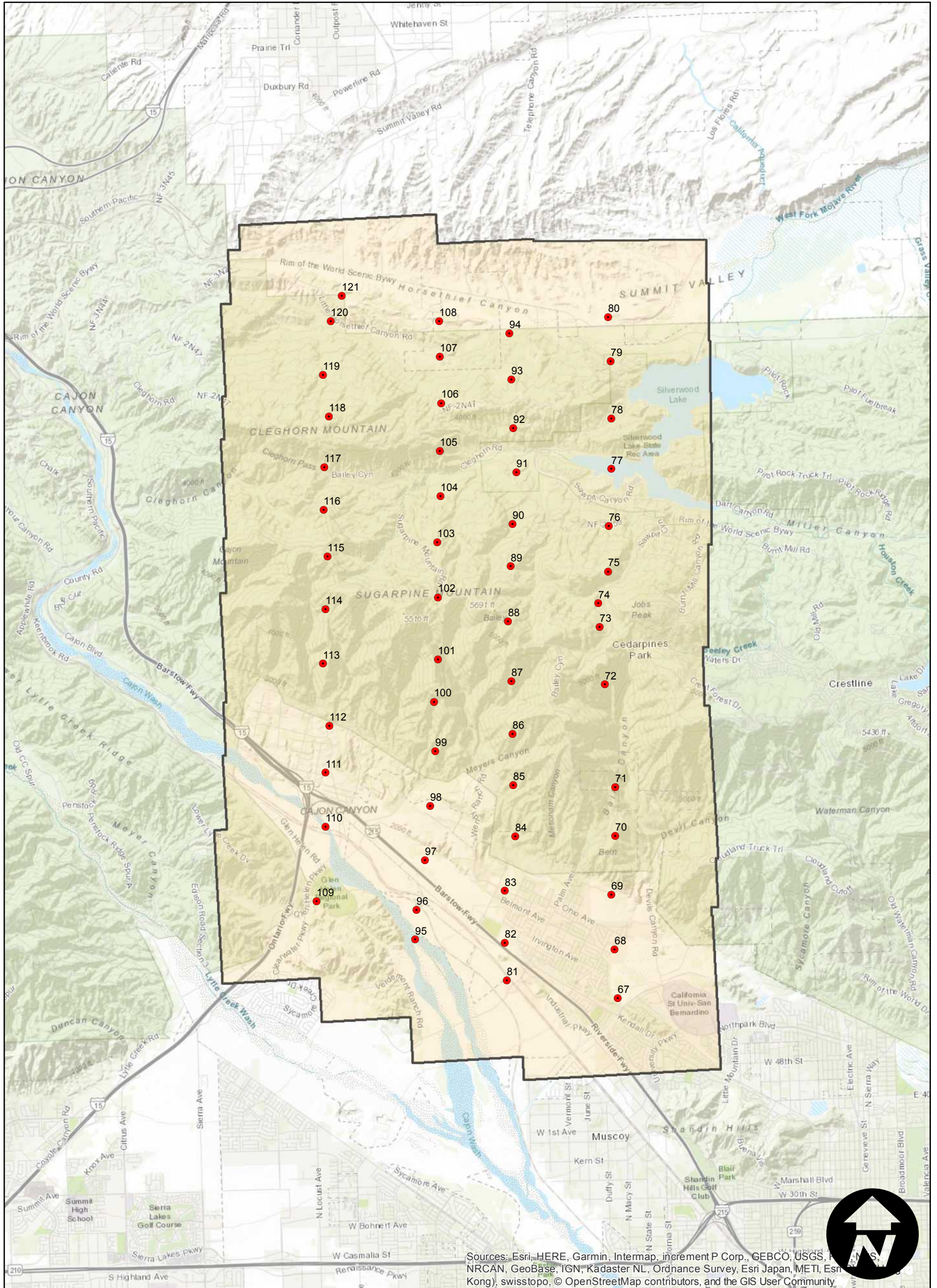
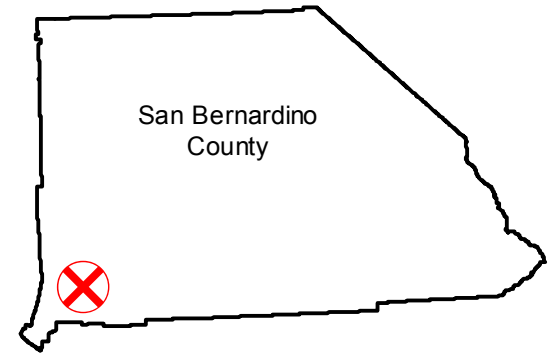
C-4359

Counties: San Bernardino
 Flight date(s): 02-17-1937
 Scale: 1:18,000
 Overlap: 20-80%

Complete Metadata:
<https://www.library.ucsb.edu/src/airphotos/aerial-photography-information>

Note: San Bernardino National Forest (north of Muscoy): vicinity of Cajon Canyon, Cajon Mountain, and Devil Canyon. See flight C-4359X for additional frames shot on an earlier date. Imagery acquired January 2013. Nitrate imagery scanned, July 2015.

FLIGHT LOCATION



Sources: Esri, HERE, Garmin, Intermap, increment P Corp., GEBCO, USGS, NRCAN, GeoBase, IGN, Kadaster NL, Ordnance Survey, Esri Japan, METI, Esri (China), Swisstopo, © OpenStreetMap contributors, and the GIS User Community



0 0.5 1 2 Miles

Scale of this index: 1:80,000