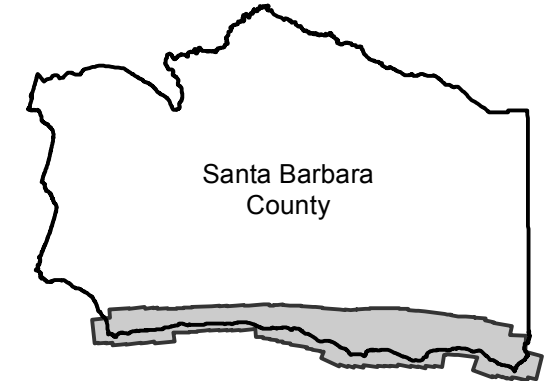


# C-430

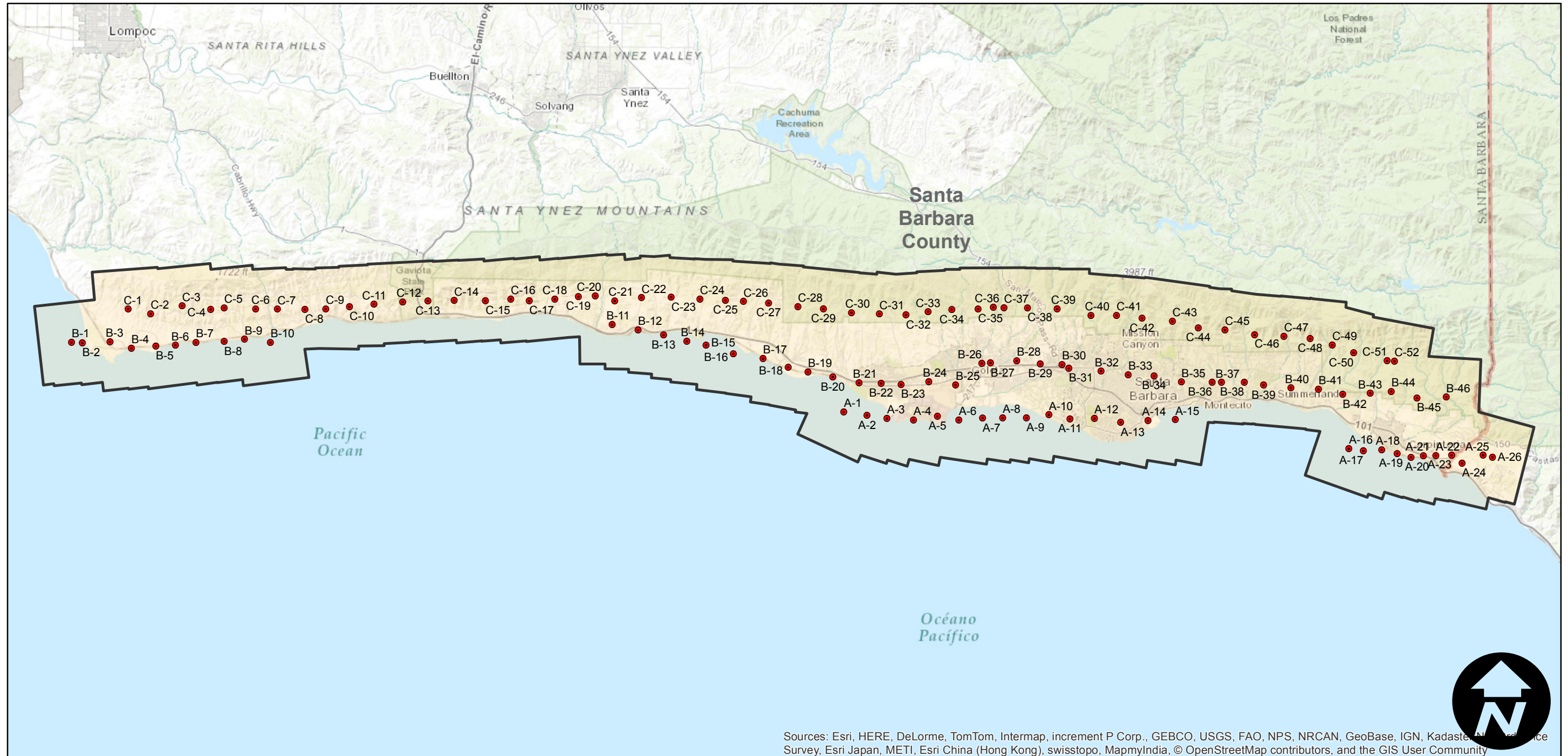
Counties: Santa Barbara  
Flight date(s): 02-01-1929 to 02-28-1929  
Scale: 1: 24,000  
Overlap: 60%

Note: Southern coastline of Santa Barbara County.  
Imagery acquired from Teledyne, Inc., 1986 and Whittier  
College, January 2013.

## FLIGHT LOCATION



Complete Metadata:  
<http://www.library.ucsb.edu/mil/aerial-photography-tools>



Sources: Esri, HERE, DeLorme, TomTom, Intermap, increment P Corp., GEBCO, USGS, FAO, NPS, NRCAN, GeoBase, IGN, Kadaster, Nippon, Metroland, Swisstopo, Suro, Swire, Esri Japan, METI, Esri China (Hong Kong), swisstopo, MapmyIndia, © OpenStreetMap contributors, and the GIS User Community

0 3 6 12 Miles

Scale of this index: 1:275,000