

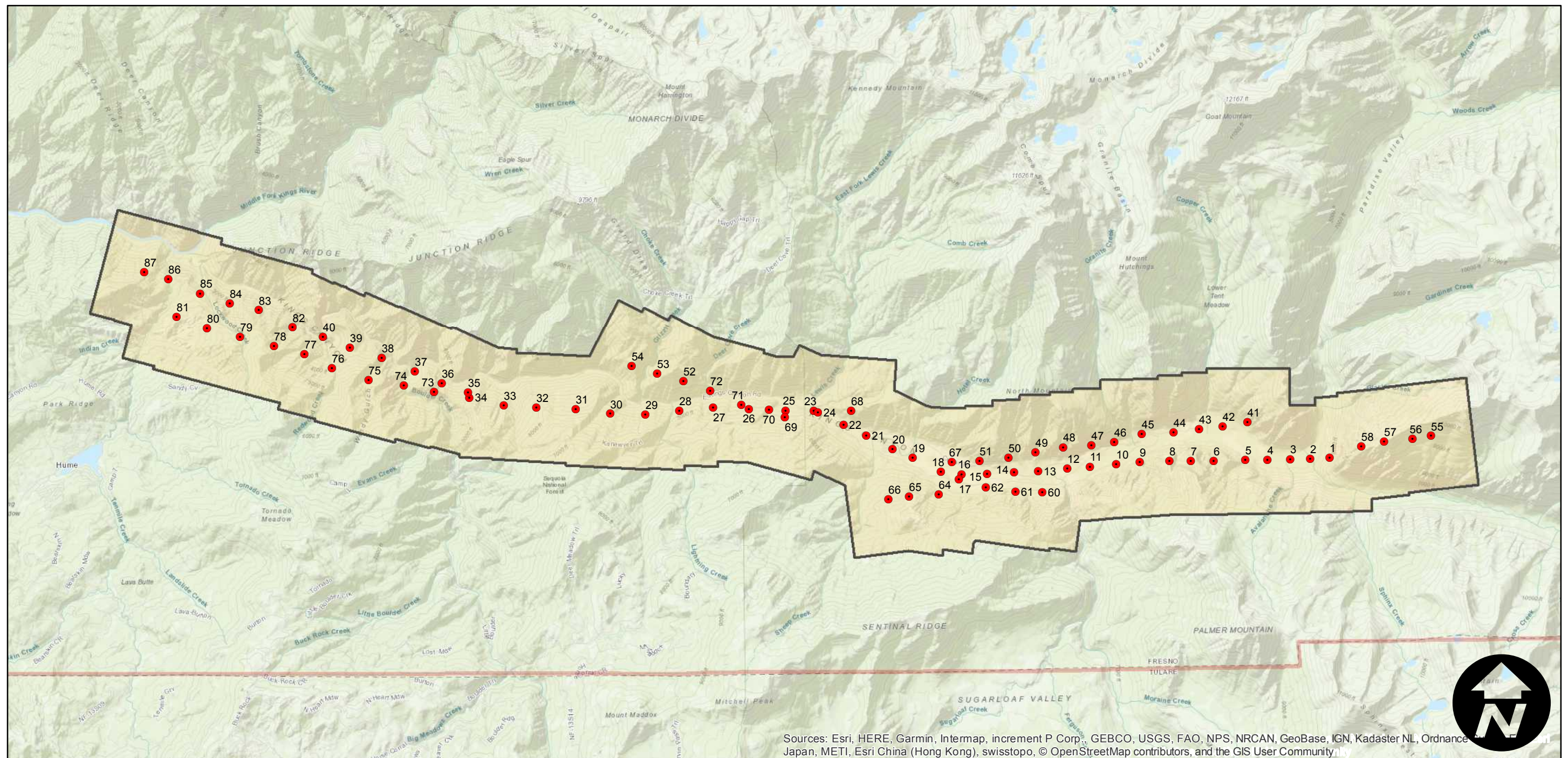
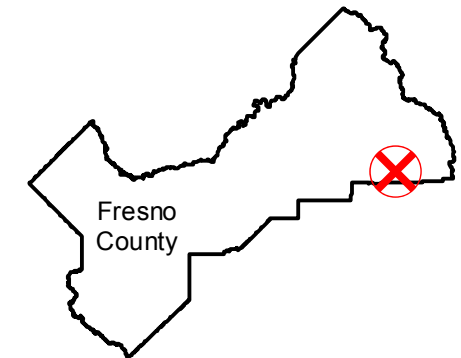
C-4180

Counties: Fresno
Flight date(s): 10-04-1936
Scale: 1:12,000
Overlap: 60-90%

Note: South Fork Kings River to Avalanche Canyon.
Vicinity of Cedar Grove (west of Kings Canyon National
Park). Imagery acquired January 2013. Nitrate negatives
scanned, July 2015.

Complete Metadata:
<https://www.library.ucsb.edu/src/airphotos/aerial-photography-information>

FLIGHT LOCATION



Sources: Esri, HERE, Garmin, Intermap, increment P Corp., GEBCO, USGS, FAO, NPS, NRCAN, GeoBase, IGN, Kadaster NL, Ordnance
Japan, METI, Esri China (Hong Kong), swisstopo, © OpenStreetMap contributors, and the GIS User Community

0 2 4 8 Miles

Index to Aerial Photography
Page 1 of 1

Scale of this index: 1:105,000