

C-4131X

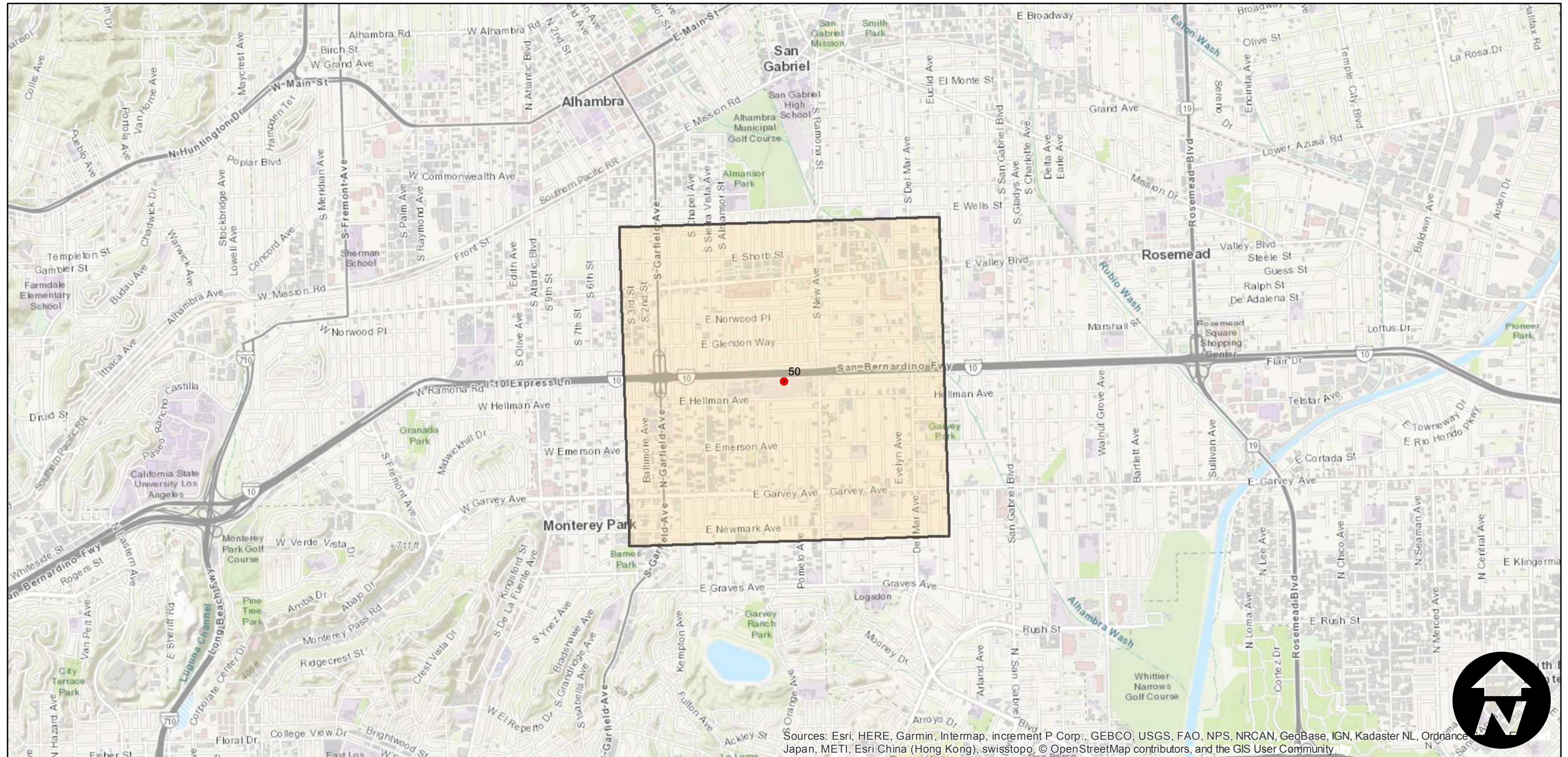
Counties: Los Angeles
Flight date(s): 08-13-1936
Scale: 1:12,000
Overlap: 0%

Note: Location of what used to be the Alhambra Airport; at the corner of Valley Blvd and New Ave. Nitrate negative acquired, January 2013 and scanned, July 2015. Frame was derived from flight C-4131.

FLIGHT LOCATION



Complete Metadata:
<https://www.library.ucsb.edu/src/airphotos/aerial-photography-information>



Sources: Esri, HERE, Garmin, Intermap, increment P Corp., GEBCO, USGS, FAO, NPS, NRCAN, GeoBase, IGN, Kadaster NL, Ordnance Survey, Esri China (Hong Kong), Swisstopo, © OpenStreetMap contributors, and the GIS User Community

