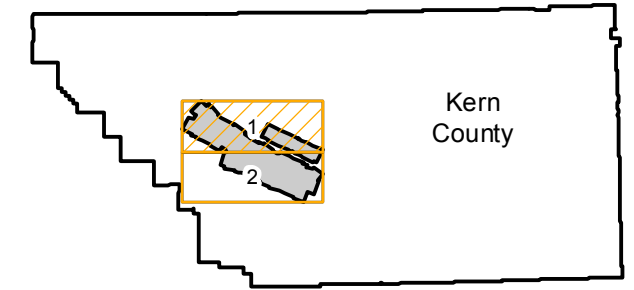


C-4093X

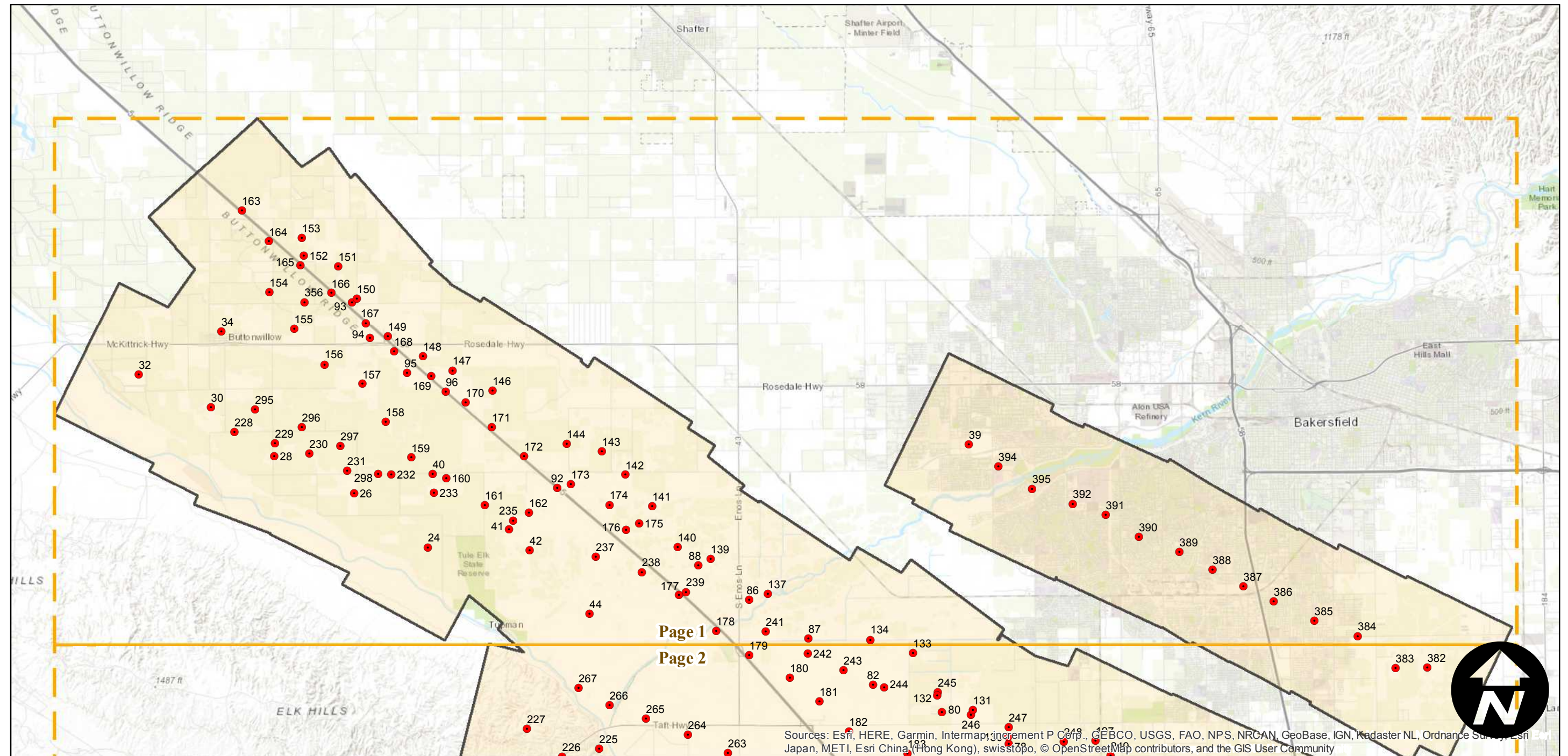
Counties: Kern
Flight date(s): 07-21-1936 to 07-28-1936
Scale: 1: 24,000
Overlap: 10-95%

Note: Oil fields between Interstate 5 and SR 99 near Bakersfield. Imagery acquired 2013.

FLIGHT LOCATION



Complete Metadata:
<https://www.library.ucsb.edu/src/airphotos/aerial-photography-information>



0 2.5 5 10 Miles

Index to Aerial Photography
Page 1 of 2

Scale of this index: 1:155,000

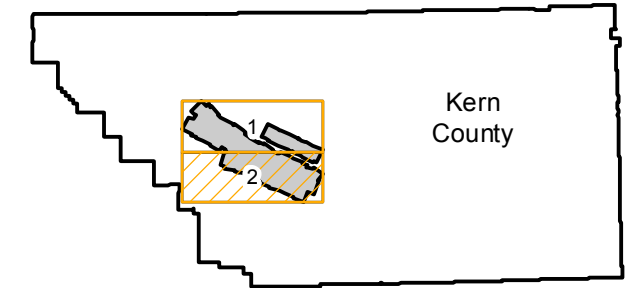
Sources: Esri, HERE, Garmin, Intermap, increment P Corp., GEBCO, USGS, FAO, NPS, NRCAN, GeoBase, IGN, Kadaster NL, Ordnance Survey, Esri Japan, METI, Esri China (Hong Kong), swisstopo, © OpenStreetMap contributors, and the GIS User Community

C-4093X

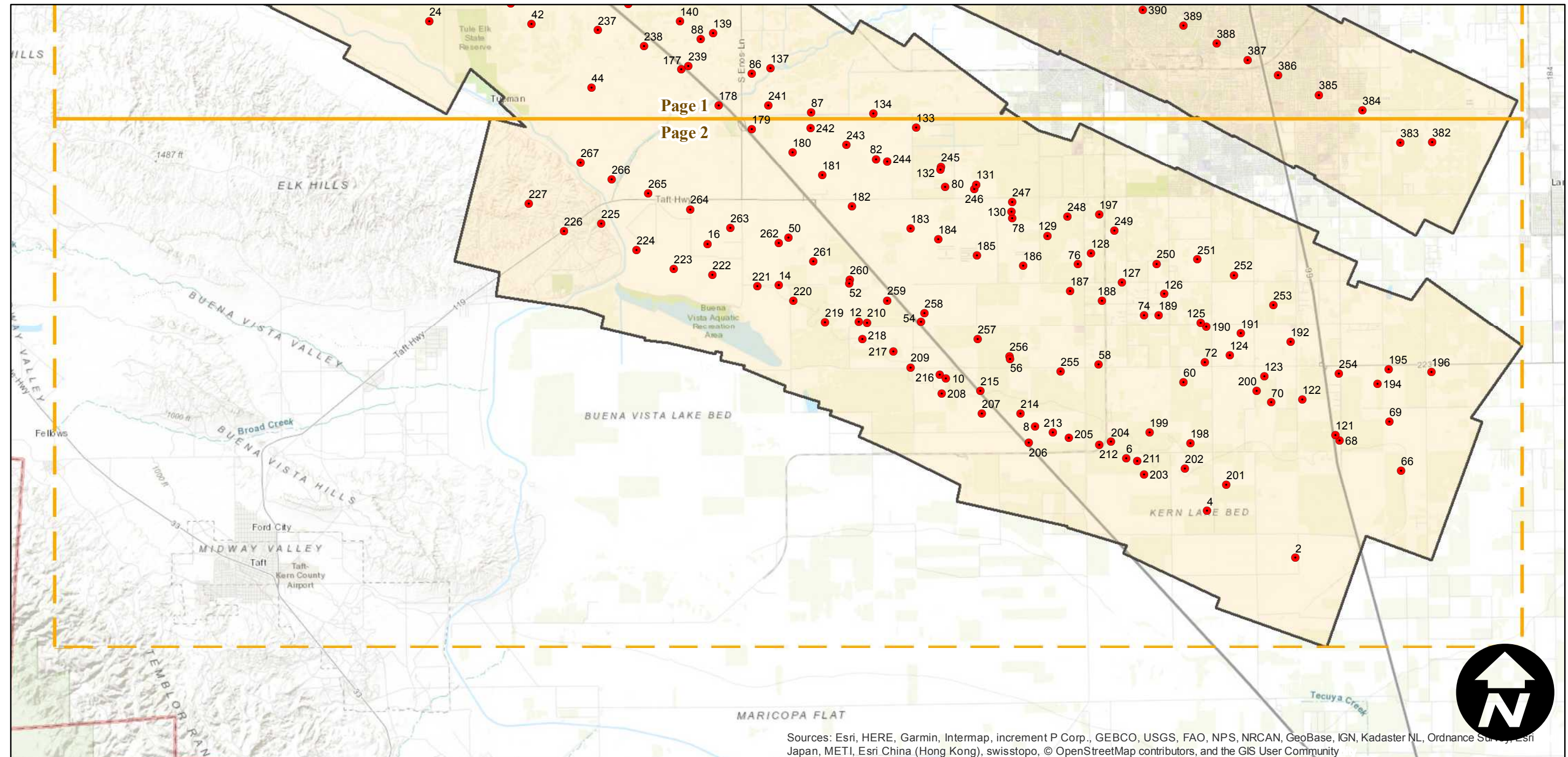
Counties: Kern
Flight date(s): 07-21-1936 to 07-28-1936
Scale: 1: 24,000
Overlap: 10-95%

Note: Oil fields between Interstate 5 and SR 99 near Bakersfield. Imagery acquired 2013.

FLIGHT LOCATION



Complete Metadata:
<https://www.library.ucsb.edu/src/airphotos/aerial-photography-information>



Sources: Esri, HERE, Garmin, Intermap, increment P Corp., GEBCO, USGS, FAO, NPS, NRCAN, GeoBase, IGN, Kadaster NL, Ordnance Survey, Esri Japan, METI, Esri China (Hong Kong), swisstopo, © OpenStreetMap contributors, and the GIS User Community

0 2.5 5 10 Miles

Index to Aerial Photography
Page 2 of 2

Scale of this index: 1:155,000