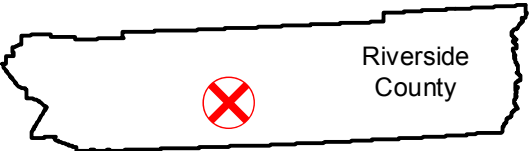


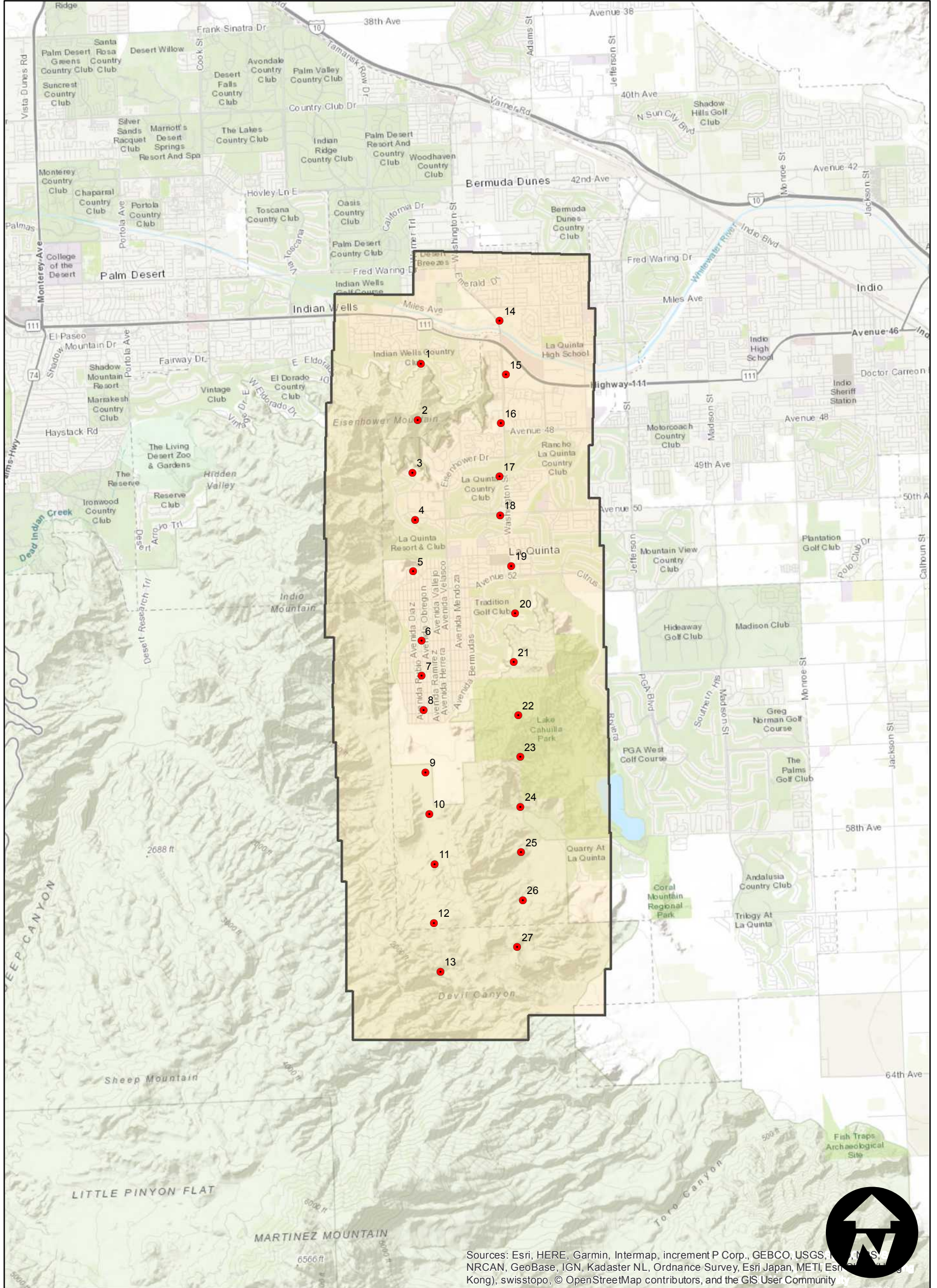
C-3961

Counties: Riverside
Flight date(s): 03-28-1936 to 04-15-1936
Scale: 1:15,000
Overlap: 60%

Note: Vicinity of La Quinta and Indian Wells. Imagery acquired January, 2013. Nitrate negatives scanned May 2015.



Complete Metadata:
<https://www.library.ucsb.edu/src/airphotos/aerial-photography-information>



Sources: Esri, HERE, Garmin, Intermap, increment P Corp., GEBCO, USGS, NRCAN, GeoBase, IGN, Kadaster NL, Ordnance Survey, Esri Japan, METI, Esri (China), Swisstopo, © OpenStreetMap contributors, and the GIS User Community