

C-3931

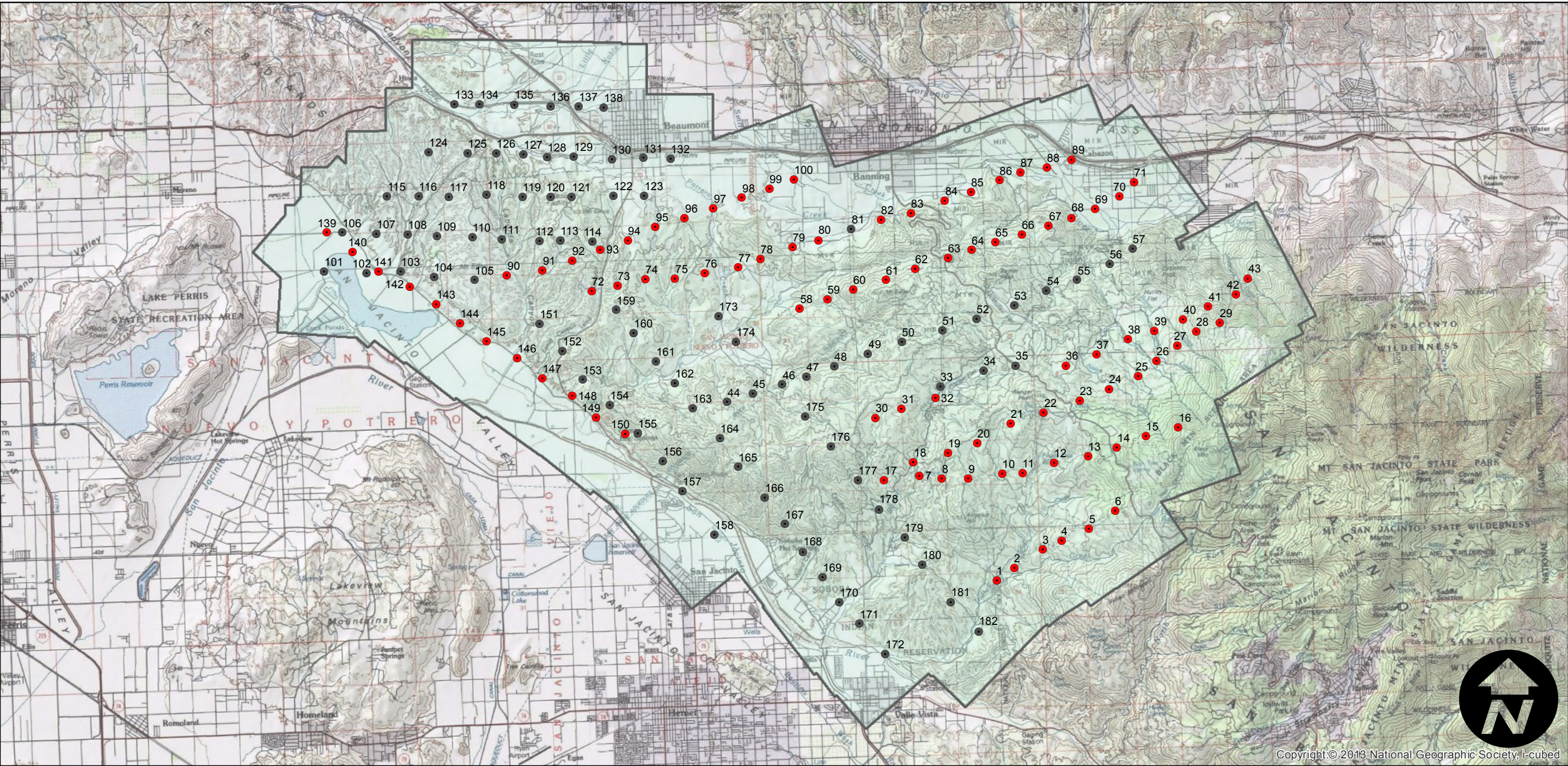
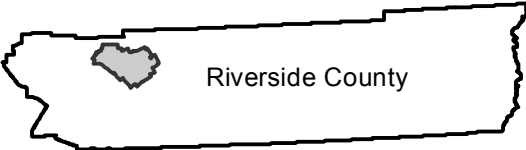
Counties: Riverside
Flight date(s): 03-28-1936
Scale: 1:14,400
Overlap: 60%

Complete Metadata:
<http://www.library.ucsb.edu/mil/aerial-photography-tools>

Note: San Jacinto Tunnel, vicinity of Banning. Index compiled from flights C-1940D, C-3152, and C-3931. Imagery acquired January, 2013.

- MIL owns frame
- MIL does not own frame

FLIGHT LOCATION



0 2 4 8 Miles