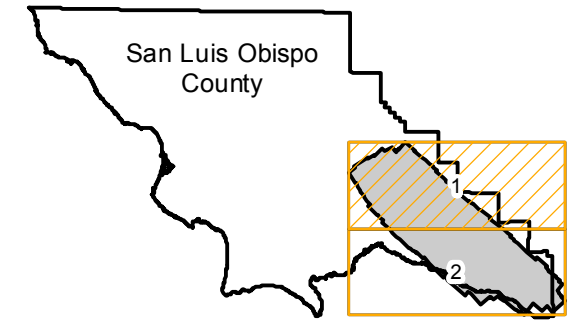


C-3883

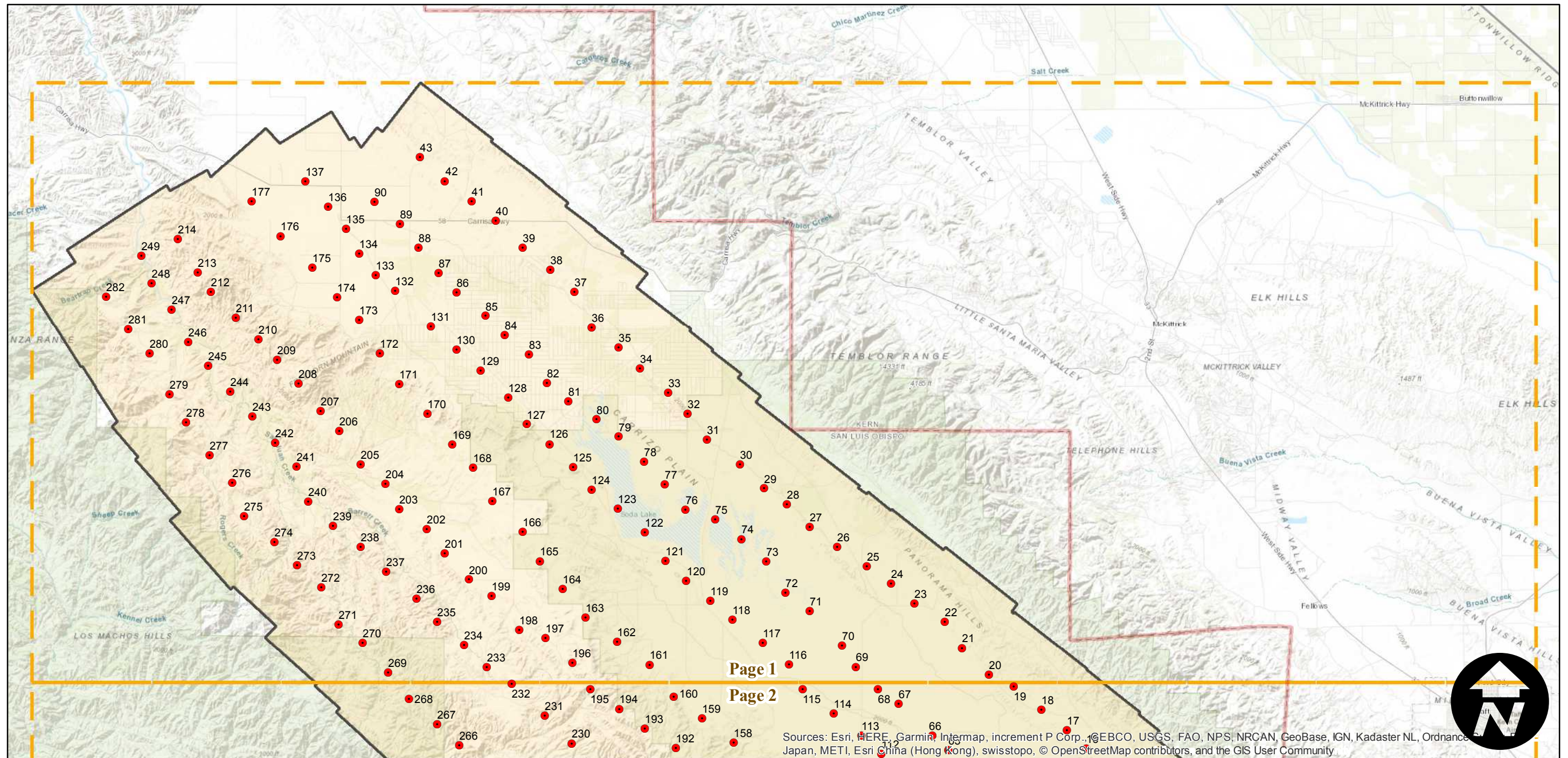
Counties: San Luis Obispo
Flight date(s): 02-27-1936 to 02-29-1936
Scale: 1:24,000
Overlap: 60%

Note: Carrizo Plain and Carrizo Range area. Imagery acquired from Teledyne, 1986 and Whittier College, January 2013. Nitrate negatives scanned, May 2015.

FLIGHT LOCATION



Complete Metadata:
<https://www.library.ucsb.edu/src/airphotos/aerial-photography-information>



Sources: Esri, HERE, Garmin, Intermap, increment P Corp., GEBCO, USGS, FAO, NPS, NRCAN, GeoBase, IGN, Kadaster NL, Ordnance Survey, Esri China (Hong Kong), swisstopo, © OpenStreetMap contributors, and the GIS User Community

0 3 6 12 Miles

Index to Aerial Photography
Page 1 of 2

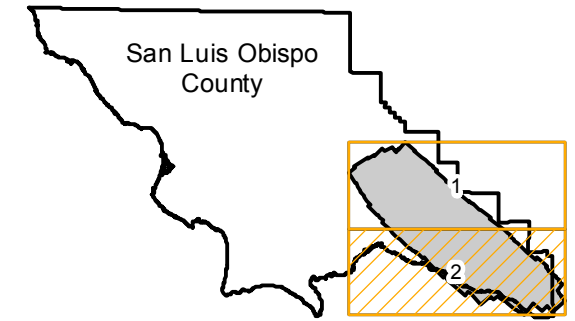
Scale of this index: 1:190,000

C-3883

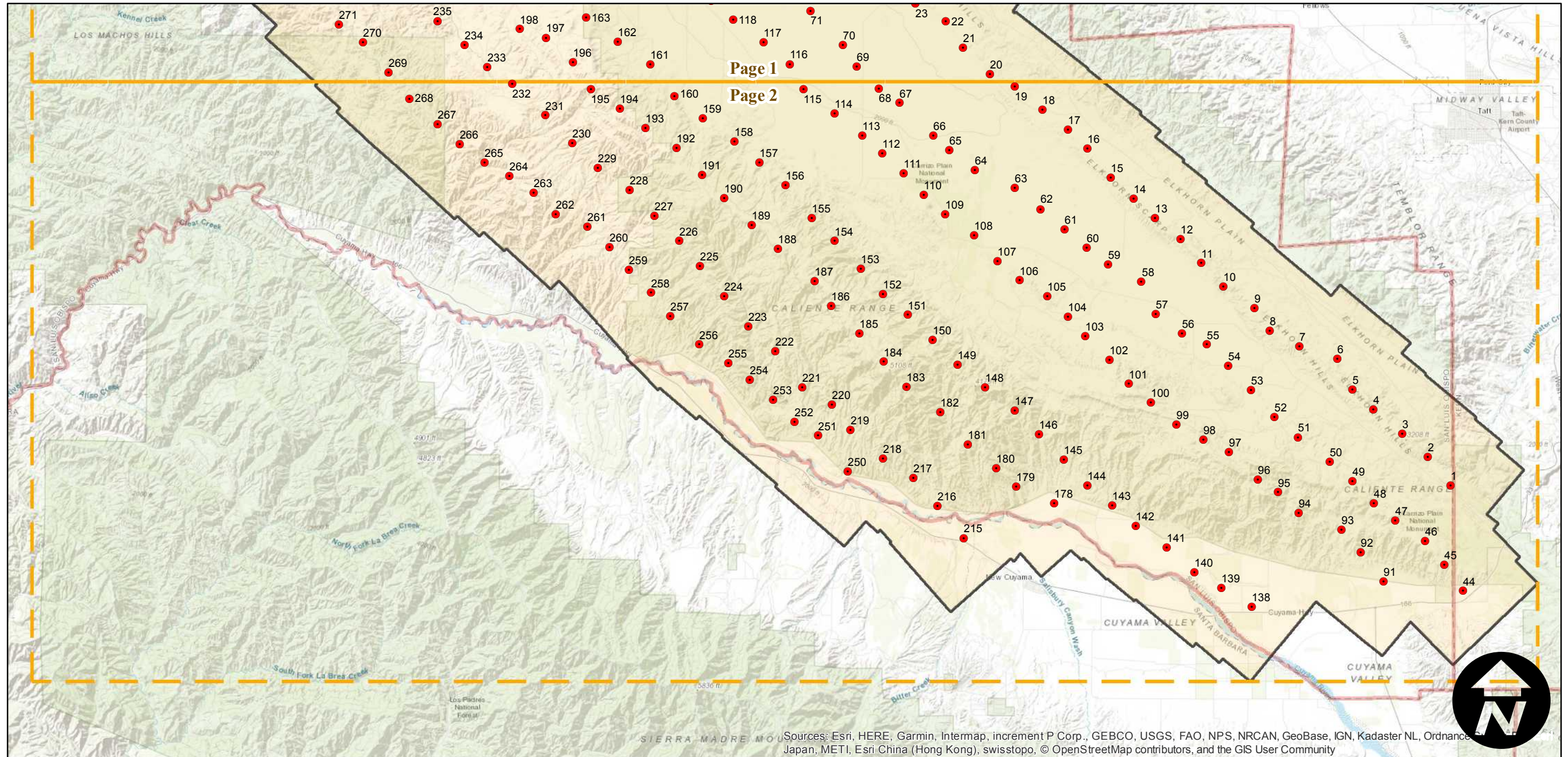
Counties: San Luis Obispo
Flight date(s): 02-27-1936 to 02-29-1936
Scale: 1:24,000
Overlap: 60%

Note: Carrizo Plain and Carrizo Range area. Imagery acquired from Teledyne, 1986 and Whittier College, January 2013. Nitrate negatives scanned, May 2015.

FLIGHT LOCATION



Complete Metadata:
<https://www.library.ucsb.edu/src/airphotos/aerial-photography-information>



Sources: Esri, HERE, Garmin, Intermap, increment P Corp., GEBCO, USGS, FAO, NPS, NRCAN, GeoBase, IGN, Kadaster NL, Ordnance Survey, Esri Japan, METI, Esri China (Hong Kong), swisstopo, © OpenStreetMap contributors, and the GIS User Community

0 3 6 12 Miles

Index to Aerial Photography
Page 2 of 2

Scale of this index: 1:190,000