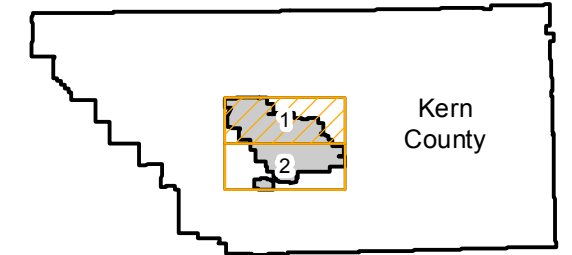


C-3858

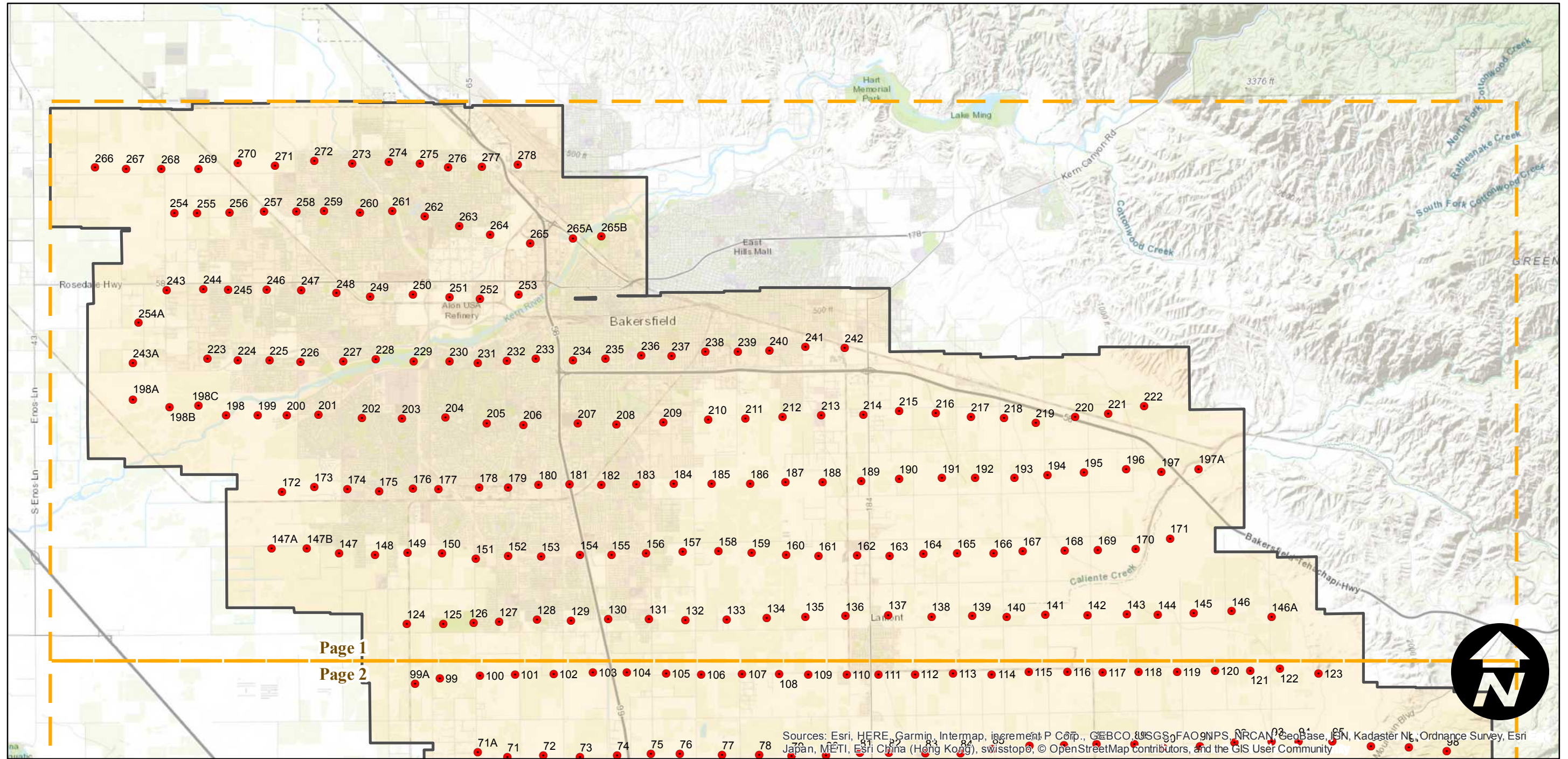
Counties: Kern
Flight date(s): 02-06-1936 to 02-29-1936
Scale: 1:18,000
Overlap: 40-80%

Note: Arvin, Greenfield, Lamont, southwestern Bakersfield, and vicinity. Imagery acquired January 2013. Nitrate negatives scanned, June 2015.

FLIGHT LOCATION



Complete Metadata:
<https://www.library.ucsb.edu/src/airphotos/aerial-photography-information>



0 3 6 12 Miles

Index to Aerial Photography
Page 1 of 2

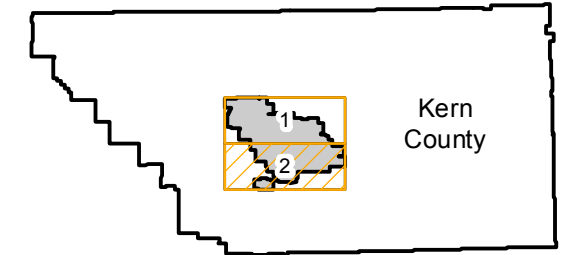
Scale of this index: 1:150,000

C-3858

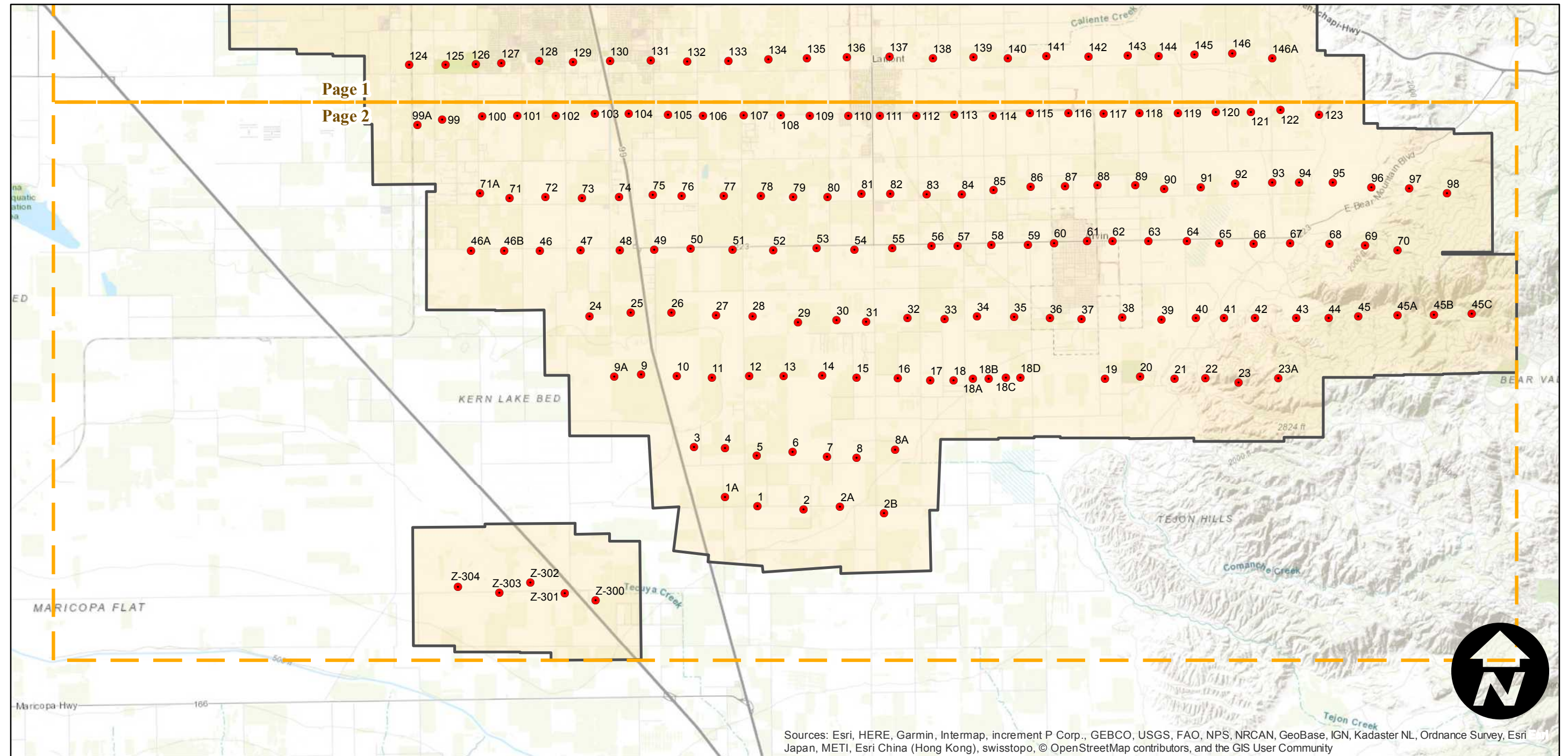
Counties: Kern
Flight date(s): 02-06-1936 to 02-29-1936
Scale: 1:18,000
Overlap: 40-80%

Note: Arvin, Greenfield, Lamont, southwestern Bakersfield, and vicinity. Imagery acquired January 2013. Nitrate negatives scanned, June 2015.

FLIGHT LOCATION



Complete Metadata:
<https://www.library.ucsb.edu/src/airphotos/aerial-photography-information>



Sources: Esri, HERE, Garmin, Intermap, increment P Corp., GEBCO, USGS, FAO, NPS, NRCAN, GeoBase, IGN, Kadaster NL, Ordnance Survey, Esri Japan, METI, Esri China (Hong Kong), swisstopo, © OpenStreetMap contributors, and the GIS User Community

0 3 6 12 Miles

Index to Aerial Photography
Page 2 of 2

Scale of this index: 1:150,000