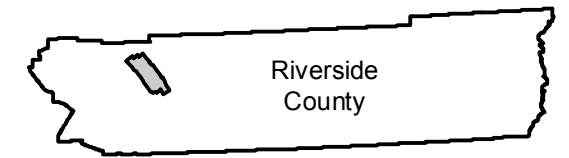


# C-3852

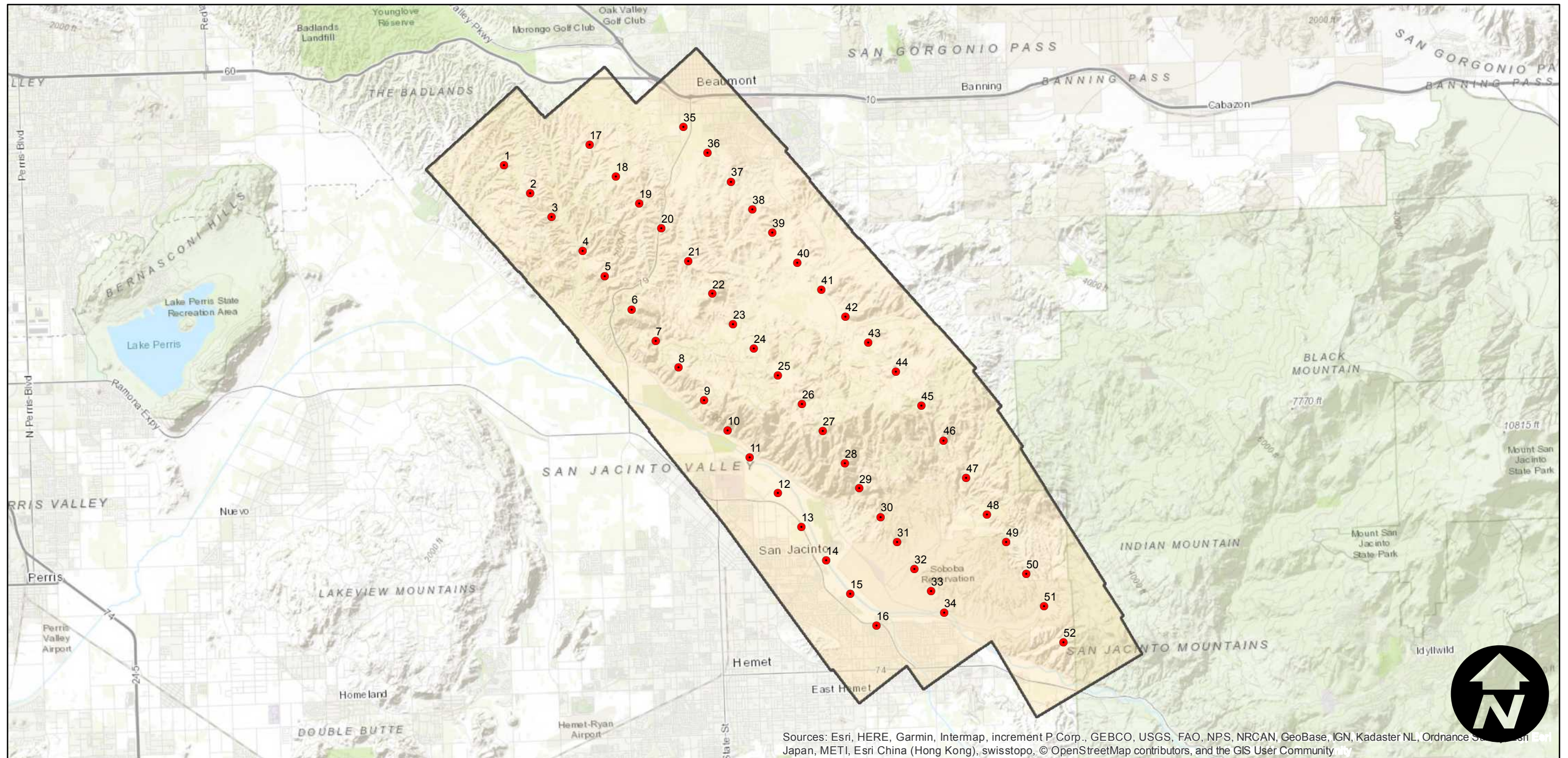
Counties: Riverside  
Flight date(s): 08-28-1934  
Scale: 1: 18,000  
Overlap: 60%

Note: San Jacinto Mountains between Beaumont and Hemet. Acquired from Whittier College, January 2013. Nitrate negatives scanned, May 2015.

## FLIGHT LOCATION



Complete Metadata:  
<https://www.library.ucsb.edu/src/airphotos/aerial-photography-information>



Sources: Esri, HERE, Garmin, Intermap, increment P Corp., GEBCO, USGS, FAO, NPS, NRCAN, GeoBase, IGN, Kadaster NL, Ordnance Survey, Esri Japan, METI, Esri China (Hong Kong), swisstopo, © OpenStreetMap contributors, and the GIS User Community

